

## PROJECT CONTEXT

THIS PROJECT REIMAGINES THE REMAINING FRAGMENTS OF NORWICH'S HISTORIC CITY WALL AS LIVING, COMMUNICATIVE ENVIRONMENTS. RATHER THAN PRESERVING THE FRAGMENTS AS STATIC MONUMENTS, THE PROPOSAL ENCOURAGES A DYNAMIC CO-AUTHORSHIP OF MEANING, WHERE LAYERED NARRATIVES UNFOLD OVER TIME. EACH INTERVENTION OPERATES AS A PERFORMATIVE APPARATUS: A SPATIAL DEVICE OFFERING, GUIDING, AND FACILITATING EXPERIENCES. THROUGH THIS FRAMEWORK, THE URBAN LANDSCAPE BECOMES A VOYAGE OF DISCOVERY - A DYNAMIC EXPLORATION OF INTERCONNECTED NARRATIVES EMBEDDED WITHIN THE CITY. WALKING, OBSERVING, AND MOMENTS OF ACTIVE PARTICIPATION BECOME ACTS OF MEANING-MAKING. MOVEMENT ENABLES A DIALOGUE TO UNFOLD BETWEEN THE VISITOR AND FRAGMENT, GENERATING NEW PERSPECTIVES AND SHIFTING PERCEPTIONS.

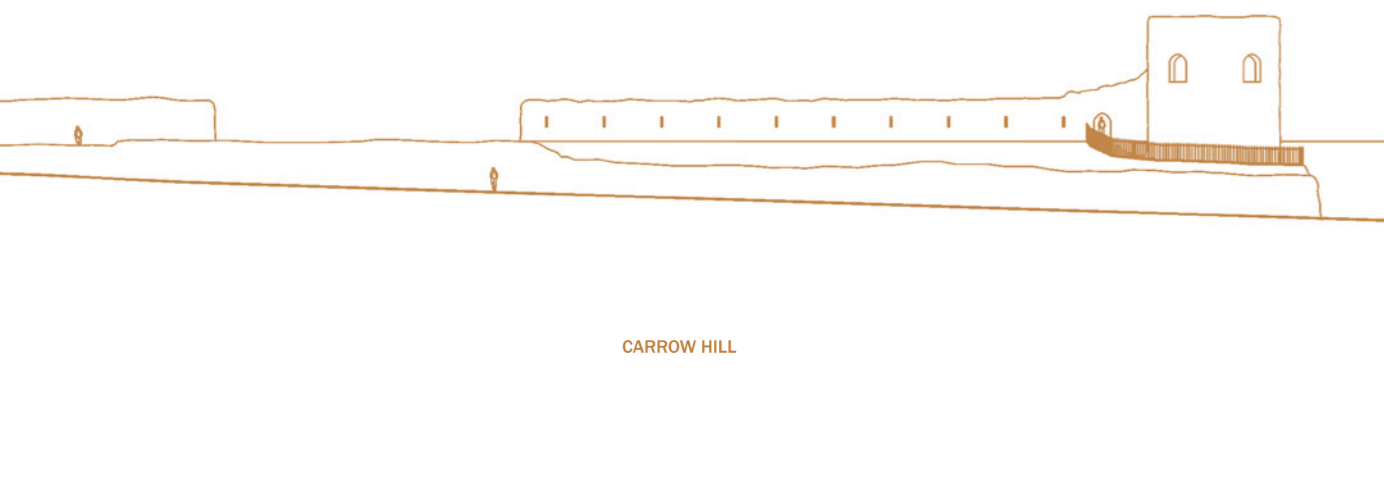
THEMES: CULTURAL HERITAGE, PLACEMAKING, ACTIVE PARTICIPATION, JOURNEY OF DISCOVERY



AN ARTIST'S IMPRESSION BY D. GRIFFITHS OF THE NORWICH CITY WALLS AT THE TIME OF THEIR COMPLETION IN THE MID FOURTEENTH CENTURY COURTESY OF AVIVA GROUP ARCHIVE.



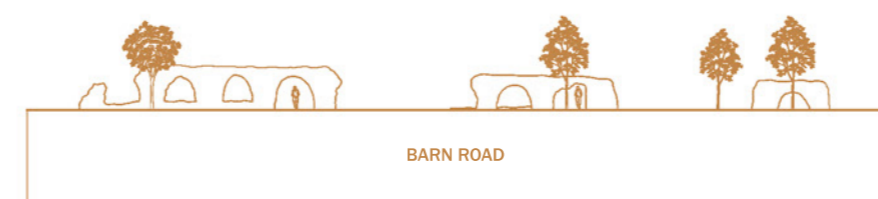
SCALE 1: 10000  
0 100 200 300 400 500 600 700 800 900 1000+



CARROW HILL



ST STEPHENS



BARN ROAD



BAKERS ROAD



MAGPIE ROAD

# CARROW HILL

## APPROACH

SENSITIVITY TOWARDS THE MEETING OF OLD & NEW THROUGH LIGHT WELLS - LINEAR FORM GUIDING MOVEMENT - INFORMATIVE HUB FOR VISITORS - UTILISING LIGHTING AS A TOOL FOR ENHANCING ATMOSPHERE & FUNCTIONALITY

## VISITOR EXPERIENCE

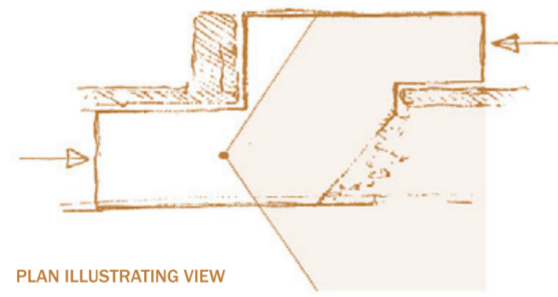
TANGIBLE : GENTLE GUIDED MOVEMENT - INTERIORITY & SENSE OF ENCLOSURE

INTANGIBLE : INFORMATIVE HUB - COMMUNAL AREA OF DISCOVERY

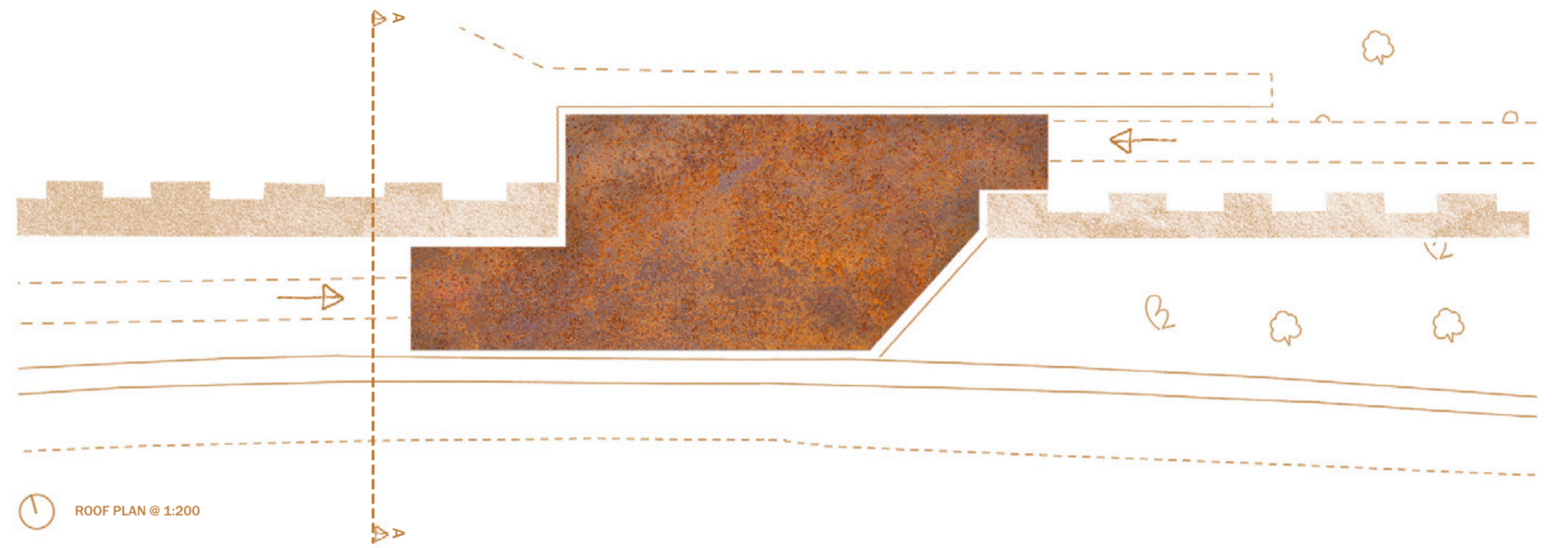


PERSPECTIVE VIEW FROM WITHIN INTERVENTION

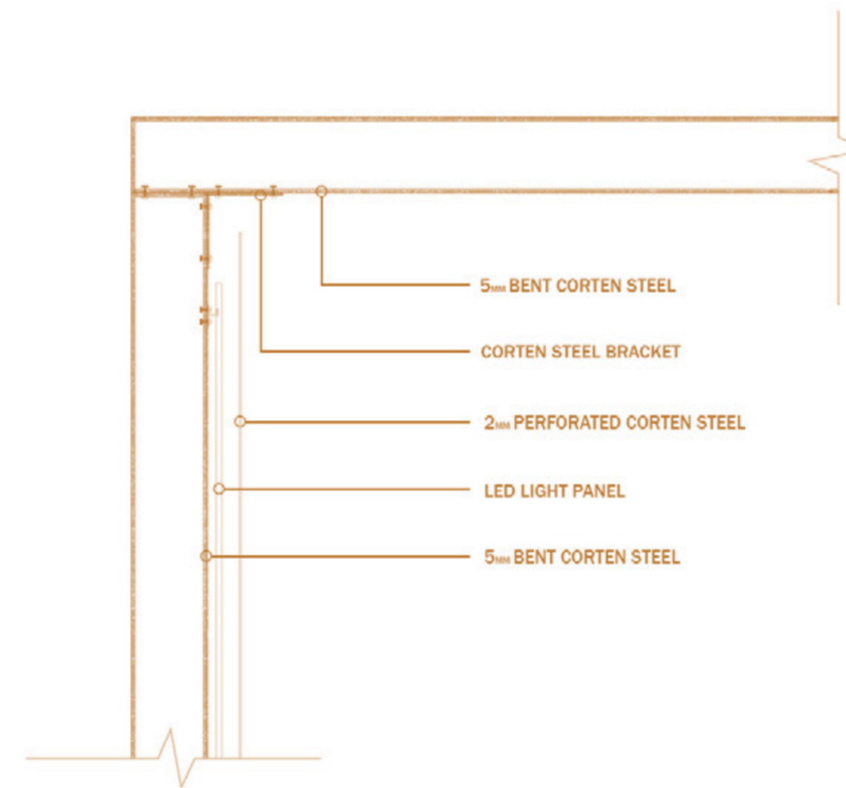
- 1 LIGHT WELL - INTERVENTION NOT TOUCHING WALL
- 2 DOUBLE-WALL STRUCTURE - INTEGRATED LIGHTING BEHIND PERFORATED PANEL DISPLAYING VISITOR INFORMATION
- 3 HISTORICAL & CULTURAL CONTEXT
- 4 TRACES OF CITY WALL



PLAN ILLUSTRATING VIEW



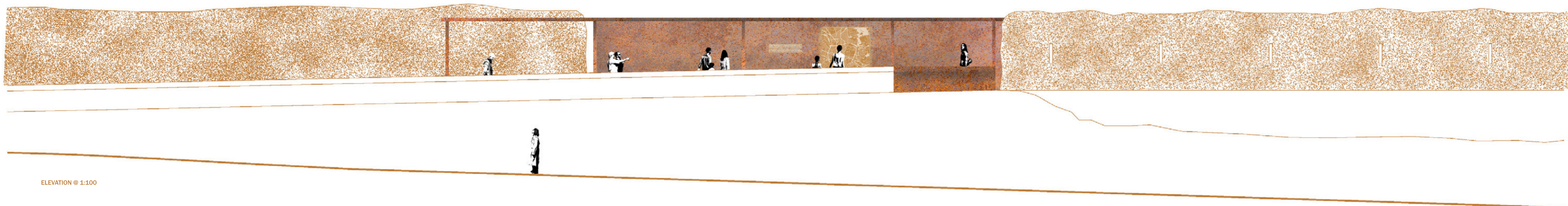
ROOF PLAN @ 1:200



DETAIL OF DOUBLE WALL SYSTEM & INTEGRATED LIGHTING @ 1:10



SECTION A - A @ 1:100



ELEVATION @ 1:100

# ST STEPHENS

## APPROACH

SENSITIVITY TOWARDS THE MEETING OF OLD & NEW THROUGH SUSPENDING PLATFORMS OVER THE WALL - PROVIDING ELEVATED PERSPECTIVES & SHIFTING PERCEPTIONS - HORIZONTAL FRAMING OF THE WALL - LEVELS OF ENGAGEMENT (GROUND, ABOVE, PARALLEL)

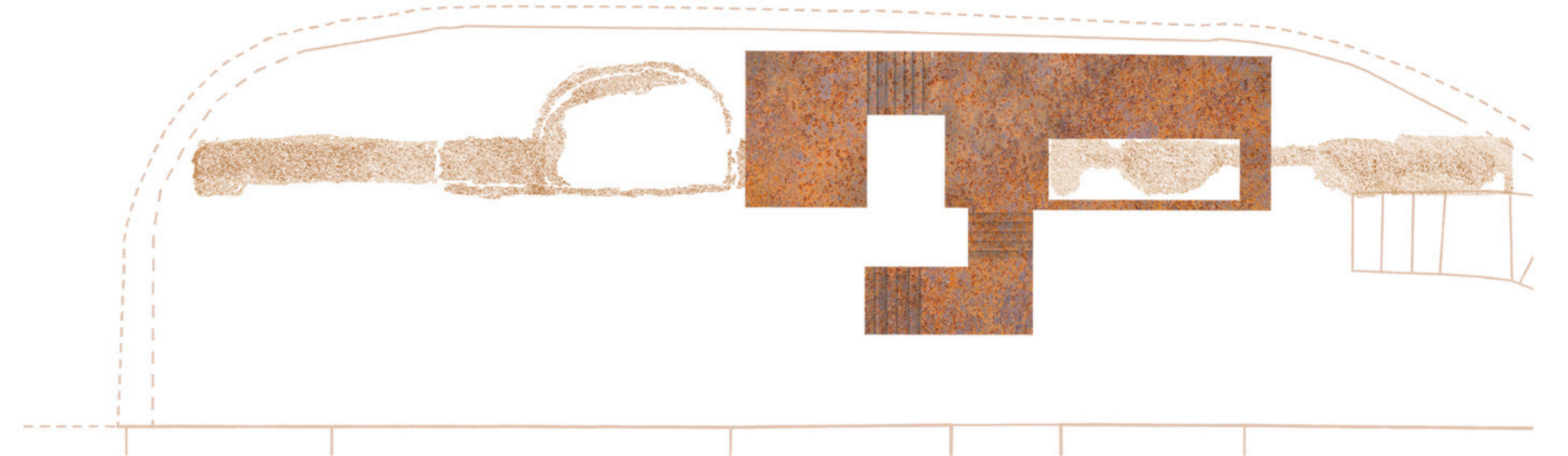
## VISITOR EXPERIENCE

TANGIBLE : VERTICAL CIRCULATION - GENTLE GUIDED MOVEMENT - ELEVATED POSITION

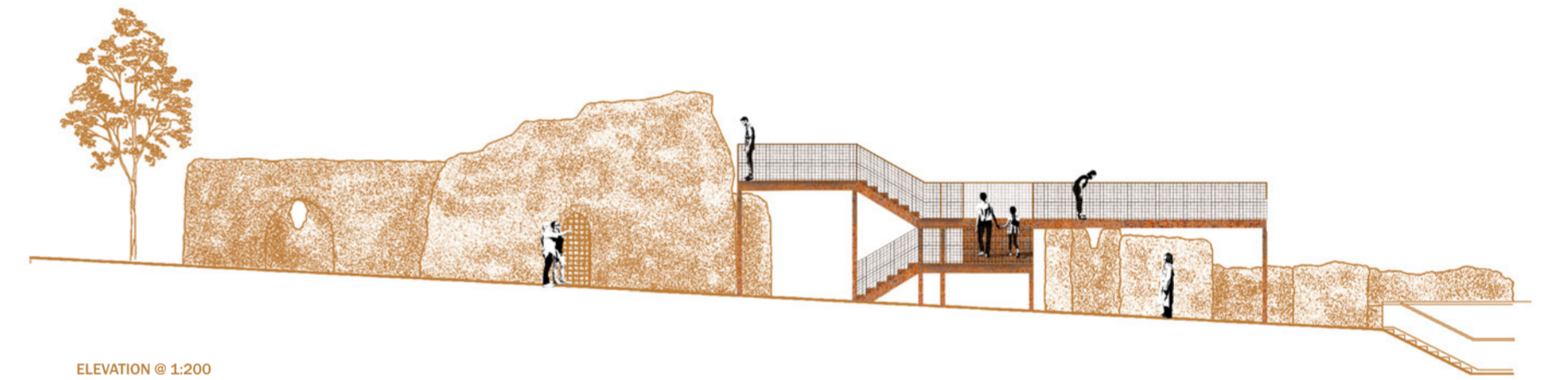
INTANGIBLE : GLASS FLOOR PROVIDING NEW PERSPECTIVES - VISUAL ACCESS INTO INTERIOR VOID OF THE WALL - SHIFTS IN ELEVATION GENERATING NEW PERCEPTIONS TOWARDS THE WALL



CHANGE IN HEIGHT ENABLING DIFFERENT PERSPECTIVES AND VISUAL CONNECTIONS WITH THE WALL



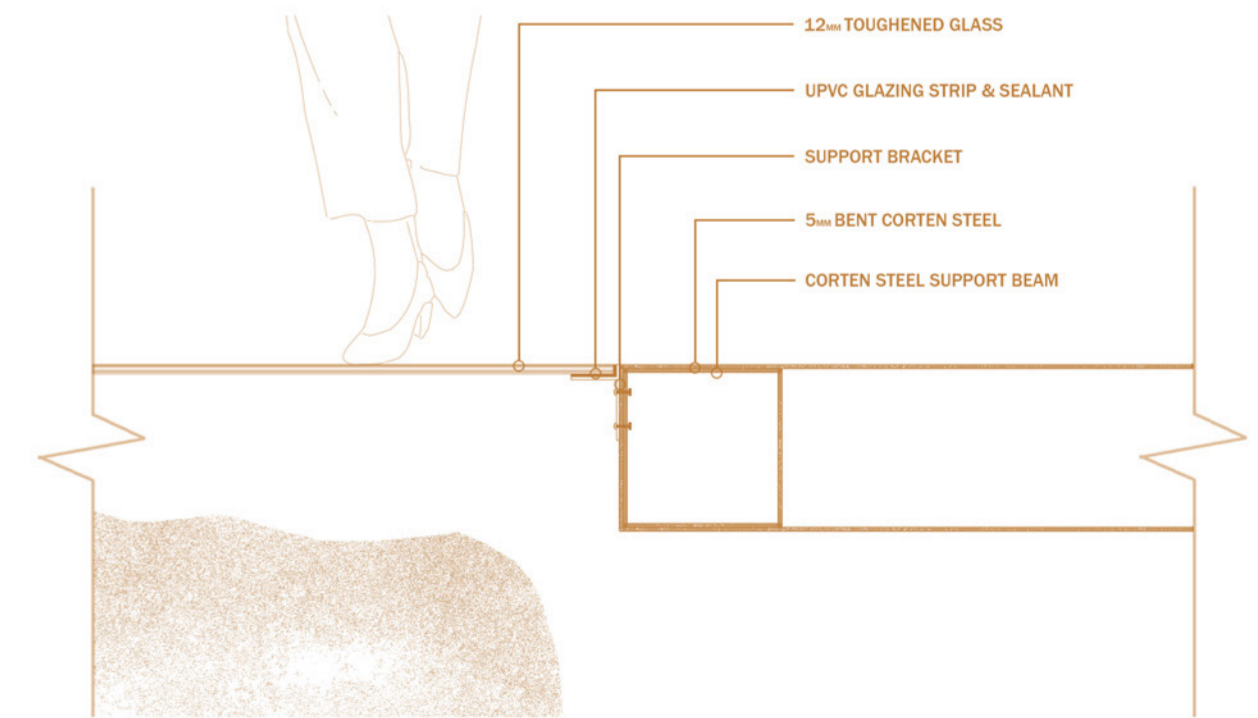
PLAN @ 1:200



ELEVATION @ 1:200



AXONOMETRIC @ 1:100



DETAIL OF GLASS FLOOR @ 1:10

# BARN ROAD

## APPROACH

EMPHASISING MEETING OF OLD & NEW - EXPLORING THE MEMORY OF WHAT ONCE WAS - FORM SPEAKING TO ORIGINAL COMPOSITION OF THE WALL - INSPIRATION FROM THE VERTICALITY OF WATCH TOWERS & THEIR FUNCTION AS A DEVICE FOR VIEWING

## VISITOR EXPERIENCE

TANGIBLE : GENTLE GUIDED MOVEMENT - WEAVING THROUGH VOIDS OF THE WALL AND INTERVENTION - INTERIORITY & SENSE OF ENCLOSURE - VERTICAL CIRCULATION

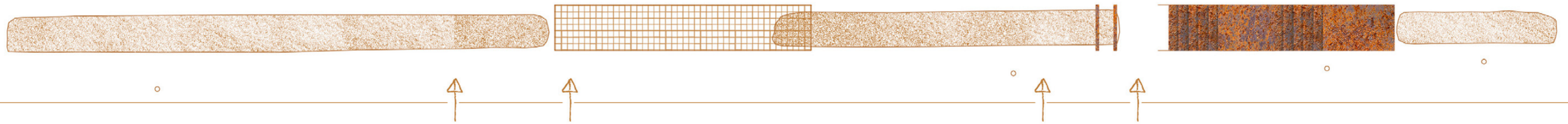
INTANGIBLE : VISUAL DISCOVERY - ELEVATED PERSPECTIVE OF THE WALL - VERTICAL FRAMING



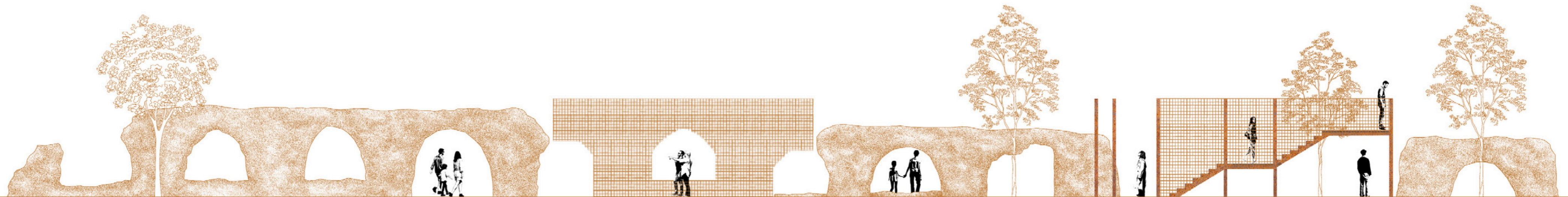
VIEW DEMONSTRATING THE MEETING OF OLD AND NEW - MOVEMENT THROUGH THRESHOLDS



PERSPECTIVE SHOWCASING THE INTERVENTION FRAMING THE WALL



PLAN @ 1:100



ELEVATION @ 1:100

# BAKERS ROAD

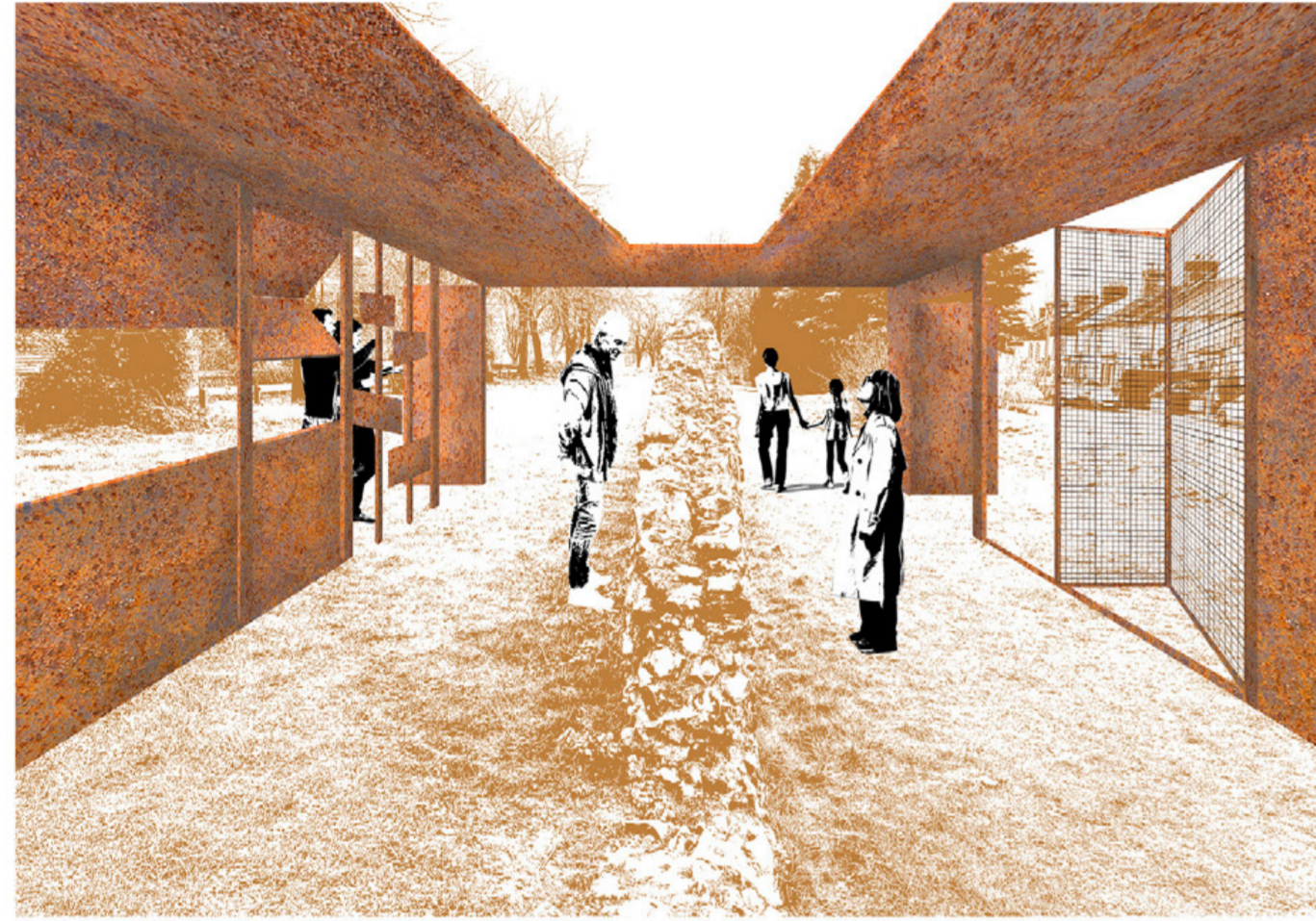
## APPROACH

INTERIOR VOLUME TO ENHANCE 360 DEGREE PHYSICAL ACCESS OF THE WALL - PARTIALLY CONCEALING TO SPARK CURIOSITY & A DESIRE TO DISCOVER - EXPLORING SHIFTS IN TRANSITION BETWEEN INTERIOR & EXTERIOR - DYNAMIC VISITOR EXPERIENCE THROUGH TACTILE ELEMENTS

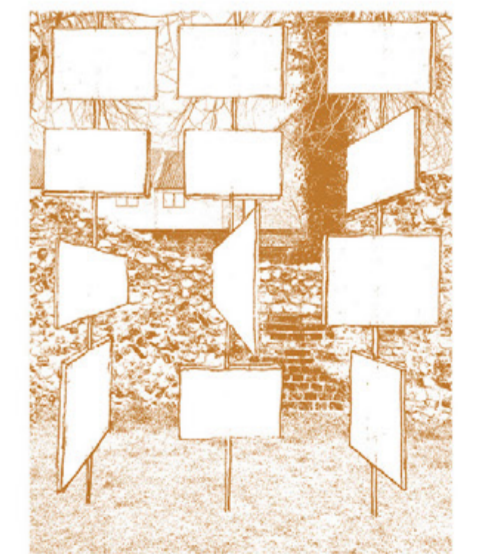
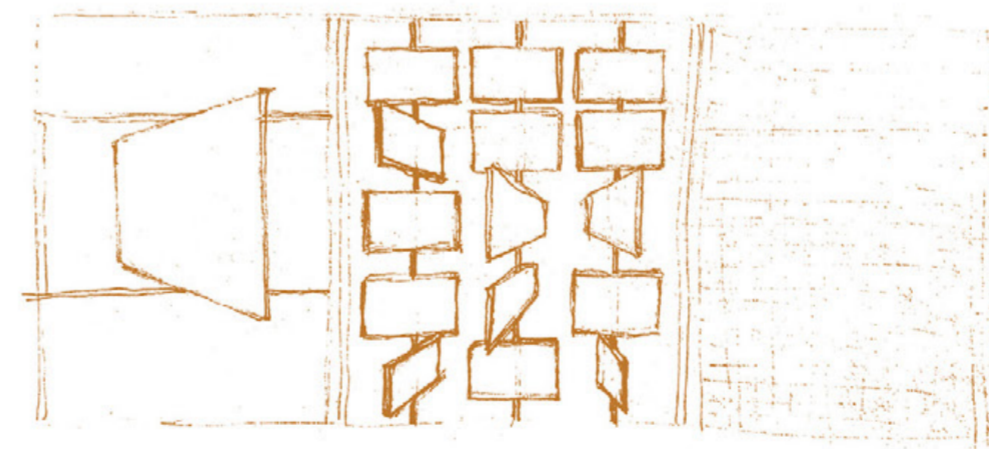
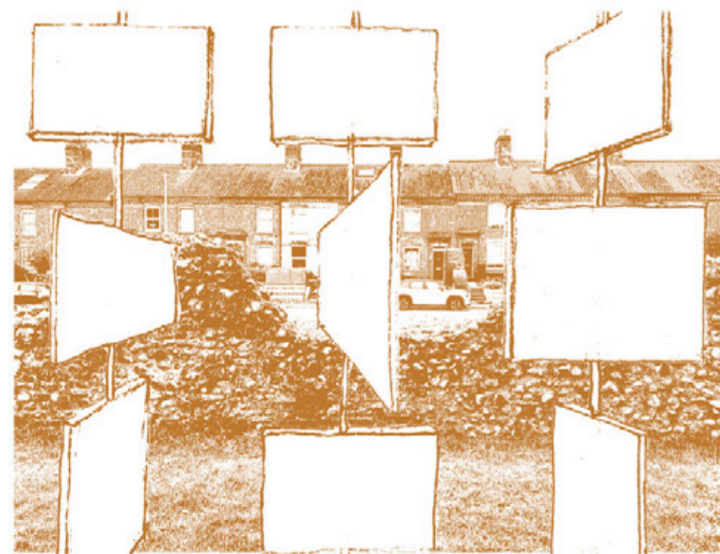
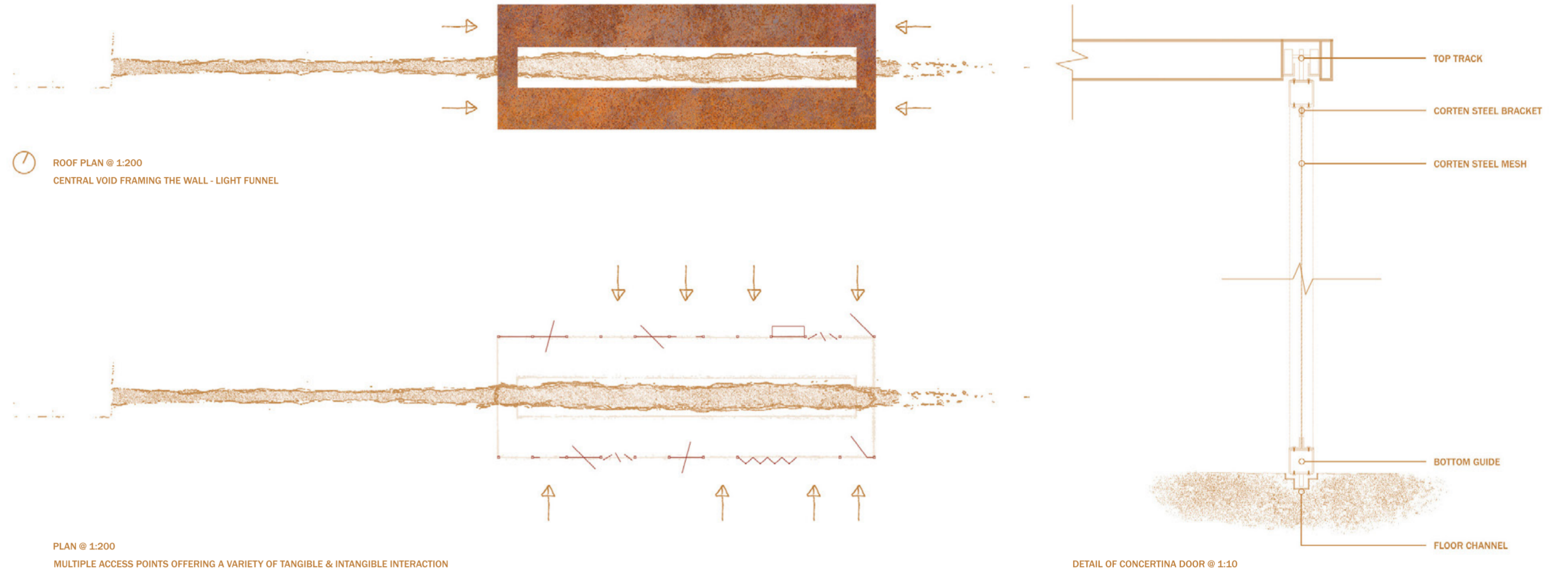
## VISITOR EXPERIENCE

TANGIBLE : INTERIORITY & SENSE OF ENCLOSURE - PHYSICAL INTERACTION WITH MOVING ELEMENTS - HANDS-ON APPROACH TO REVEALING THE WALL - MOVEMENT THROUGH A VARIETY OF OPENINGS

INTANGIBLE : VISUAL DISCOVERY - FRAMING FEATURES OF THE WALL - CUSTOMISABLE DEGREES OF VISUAL ACCESS



PERSPECTIVE VIEW FROM WITHIN INTERVENTION



ELEVATION @ 1:100

# MAGPIE ROAD

## APPROACH

UTILISING THE LINEAR CONDITIONS OF THE SITE TO GUIDE MOVEMENT & ENCOURAGE A JOURNEY OF DISCOVERY - ENHANCING THE PROCESS OF DEVELOPING MEANING THROUGH MOVEMENT - LAYERS OF THRESHOLDS

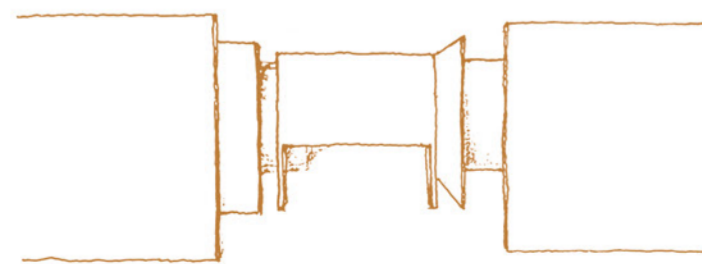
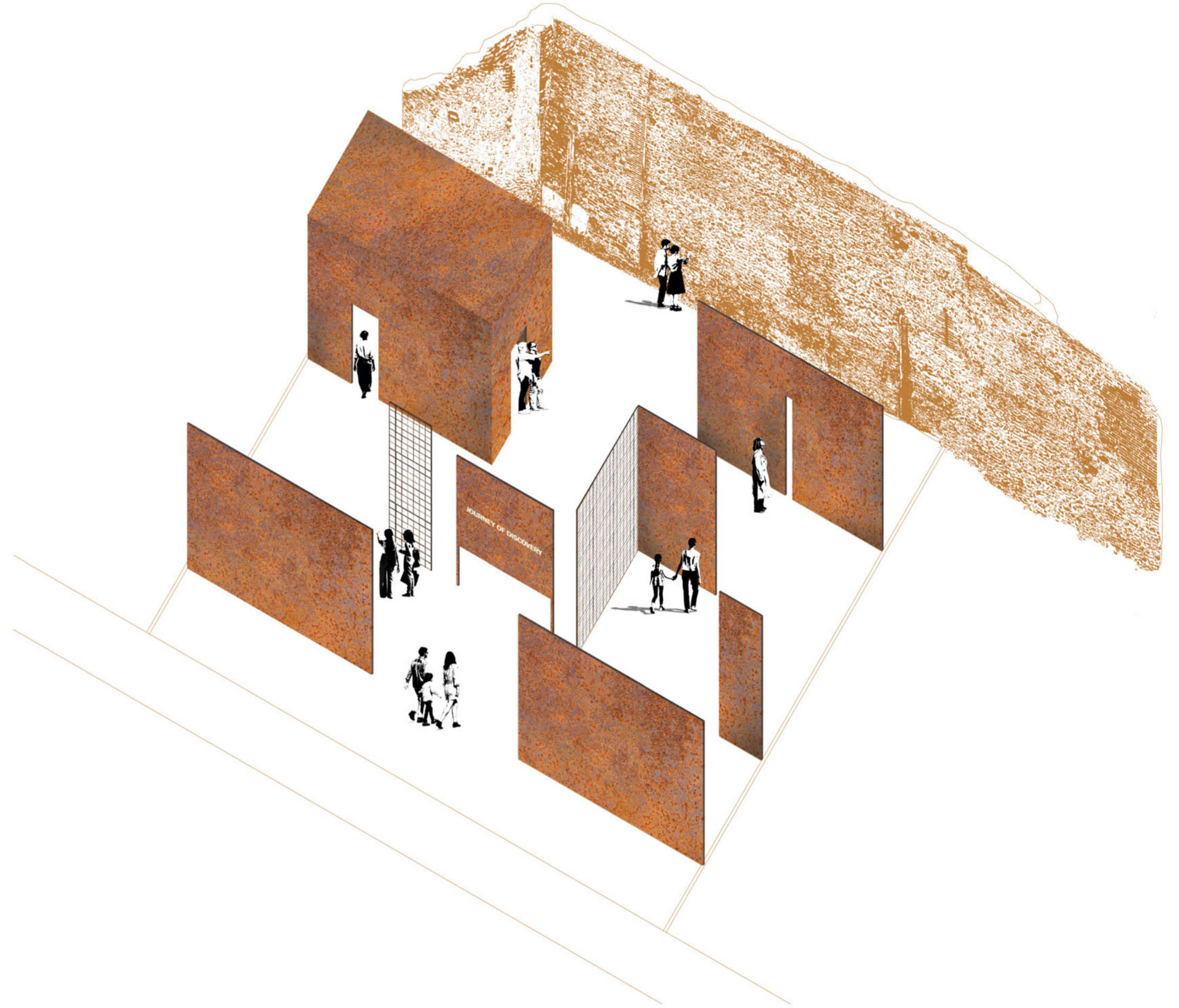
## VISITOR EXPERIENCE

TANGIBLE : GENTLE GUIDED MOVEMENT - WALKING THROUGH THE SPACE BECOMES A DYNAMIC ACT OF REVEALING & CONCEALING THE WALL - INTERIORITY & SENSE OF ENCLOSURE

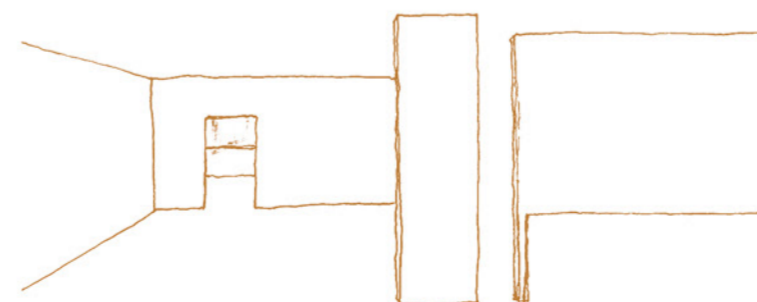
INTANGIBLE : VISUAL DISCOVERY - VOIDS WITHIN & BETWEEN THRESHOLDS FRAMING & REVEALING TEXTURES PRESENT WITHIN THE WALL



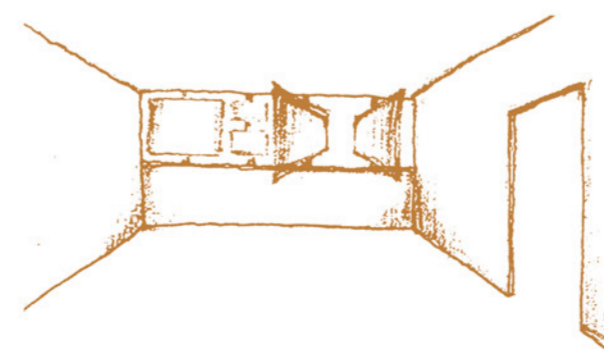
1 PLAN @ 1:200



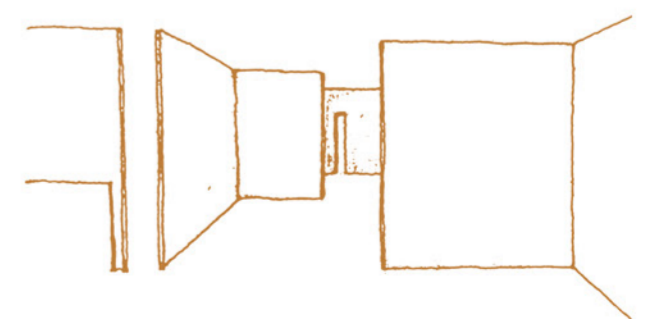
1 VIEW FROM APPROACH



2 APPROACHING THE ENTRANCE TO THE INTERIOR



3 VIEW FROM WITHIN INTERIOR FORM



4 LAYERS OF THRESHOLDS REVEALING AND CONCEALING THE WALL

## EXTENDING VISUAL ENQUIRY - 3D CONCEPTUAL EXPLORATIONS

THROUGH THE SERIES OF THREE CONCEPTUAL MODELS, A CONSISTENT MATERIAL LANGUAGE AND NARRATIVE APPROACH IS EXPLORED THROUGH VARIED MANIPULATIONS OF FORM, VOID, AND LIGHT. EACH MODEL USES FRAGMENTS OF FLINT AS A CONCEPTUAL REPRESENTATION OF THE NORWICH CITY WALL, ALLOWING THE INTERVENTIONS TO EXPLORE A DIALOGUE BETWEEN THE OLD AND NEW.

THE ST STEPHEN'S MODEL UTILISES VOIDS AS A FRAMING DEVICE. ITS ELEVATED STRUCTURE ADAPTS TO THE CONTOURS OF THE STONE, REVEALING THE FLINT'S NUANCES AND DEMONSTRATING A SENSITIVE, SITE-SPECIFIC APPROACH.

THE BAKERS ROAD MODEL TURNS THE STRATEGY INWARD, EXPLORING THE CONCEPT OF INTERIORITY. CENTRAL VOIDS CUT THROUGH THE CEILING AND FLOOR PLANES ACT AS FRAMING DEVICES, ALLOWING NATURAL LIGHT TO PASS THROUGH AND ILLUMINATE THE FLINT BELOW. THIS HIGHLIGHTS HOW VOIDS CAN SHIFT PERCEPTION AND GUIDE INTERACTION.

THE BARN ROAD MODEL EXPRESSES THE INTERVENTION AS AN ELEVATED FORM DEFINED BY A LIGHTWEIGHT MESH. THIS DELICATE THRESHOLD INTERACTS SUBTLY WITH LIGHT, CREATING PATTERNS OF TRANSPARENCY THAT SOFTEN THE STRUCTURE AND REINFORCE A NON-INTRUSIVE RELATIONSHIP WITH THE STONE.

TOGETHER, THE MODELS DEMONSTRATE HOW A SINGLE MATERIAL PALETTE CAN BE MANIPULATED TO CREATE DISTINCT ATMOSPHERES AND MODES OF ENGAGEMENT, FORMING A COHERENT YET VARIED NARRATIVE.



ST STEPHENS



BAKERS ROAD



BARN ROAD