

WITHIN THE RUIN: RITUALS OF RETURN

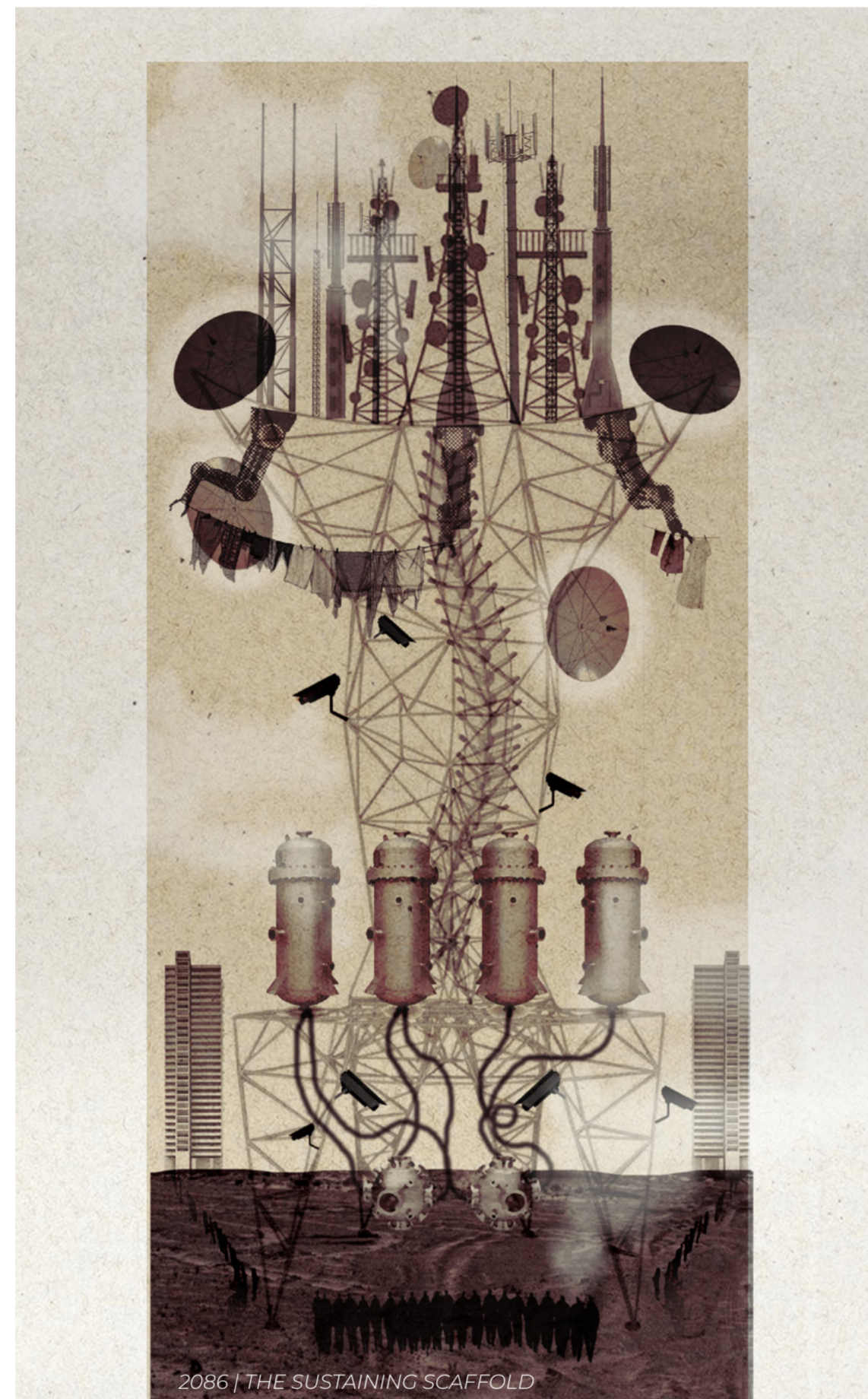
PROJECT NARRATIVE

By 2086, society is defined by efficiency, control, and passive survival. Under the government's regulated system, known as the Sustaining Scaffold, citizens live within identical tower blocks where food, clothing, and daily routines are strictly controlled. Synthetic nutrition has replaced real food, garments are sprayed directly onto the body, and natural rhythms have been replaced by programmed routines. In response, a rebel group known as the Hollowers seeks to restore sensation, individuality, and human connection. Through growing, making, gathering, and feasting together, they challenge a world that values optimisation over experience and survival over truly living.

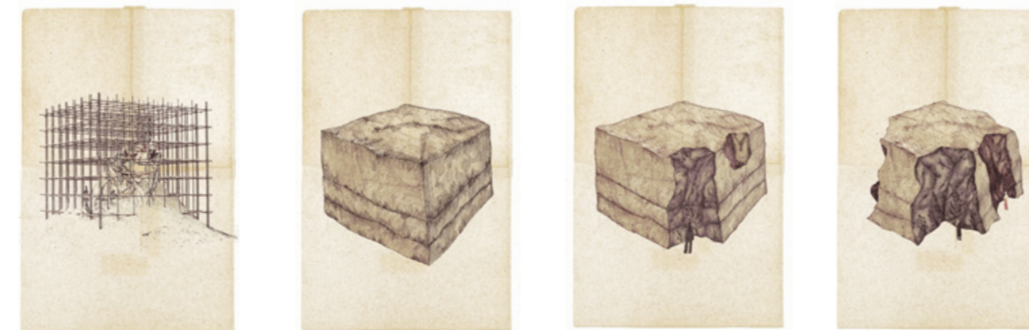
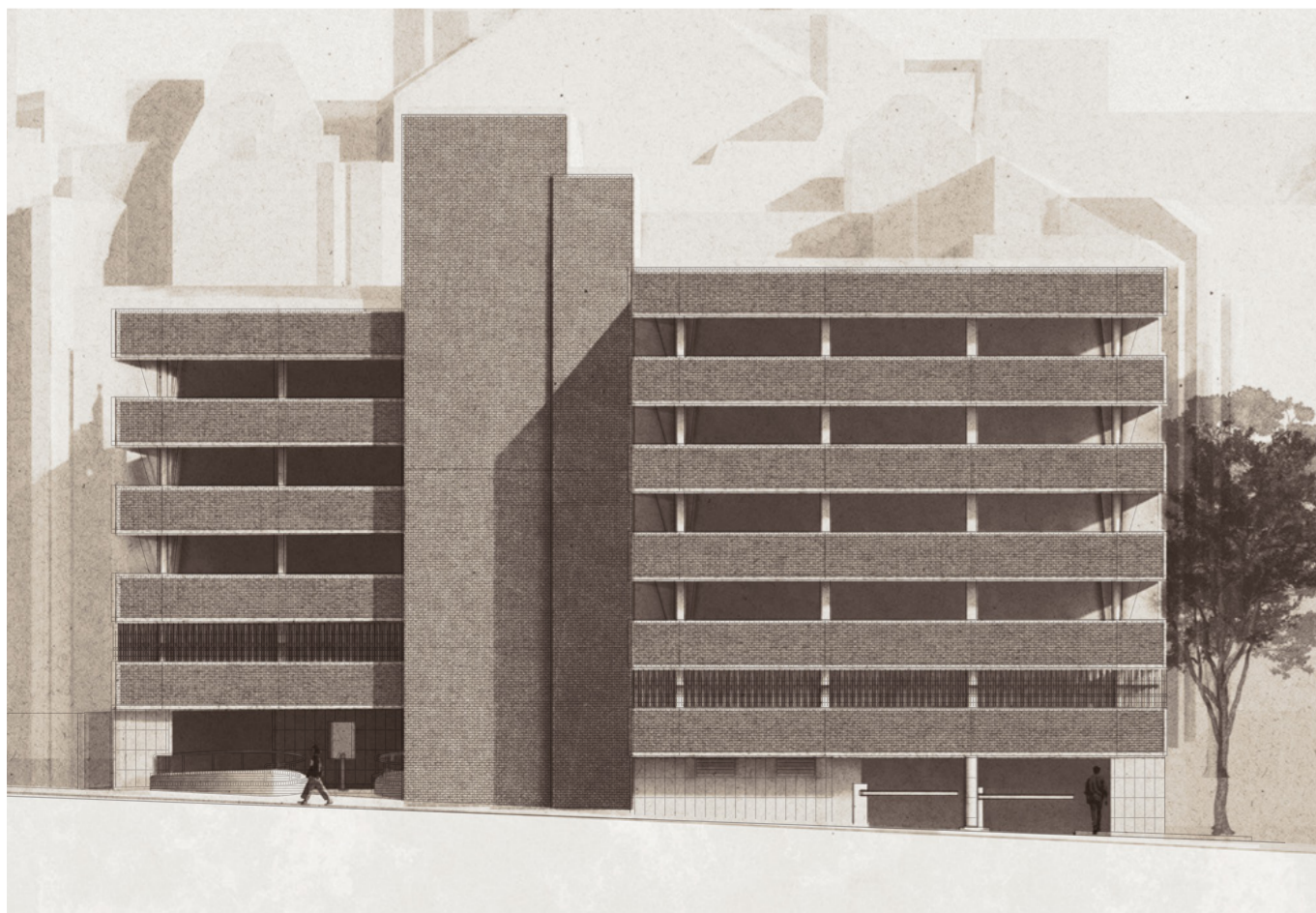
DESIGN INTENT

The proposal transforms the excavated Lace Market Car Park into a self-sustaining environment centred around ritual, making, and collective nourishment. Within the building, the Hollowers cultivate crops, fibres, and herbs that are harvested, processed, and woven into garments and symbolic parcels known as "vessels of sensation". These hand-crafted parcels are distributed throughout the city to reawaken sensory experience, memory, and human connection. At the heart of the project lies the communal feasting hall, where gathering and sharing food become the group's ultimate act of rebellion against the controlled systems of 2086. Natural light, passive ventilation, water collection, and recycling systems support the building's productive landscape, creating a closed-loop environment that sustains both the community and its rituals.

TAPESTRY INSPIRED COMPOSITION



THE SITE - THE NOTTINGHAM LACE MARKET CAR PARK



SITE REDUCTION - THE EMERGENCE OF THE HOLLOWERS

As the Sustaining Scaffold tightened its control, the government erased remnants of earlier systems that encouraged independence, choice, and communal nourishment. Among the structures concealed was the Lace Market Car Park, once used to store and distribute natural grains and whole foods. To suppress both access and memory, the building was entombed in concrete and its purpose erased. Drawn by rumours of what remained hidden inside, a rebel group began excavating the buried structure. Within the ruins they uncovered preserved grains and seeds, revealing traces of a forgotten relationship between people, nourishment, and the natural world. These discoveries inspired the group to reclaim the rituals of growing, gathering, and shared nourishment that had been lost.

THE RITUAL SEQUENCE

The ritual sequence guides members through a cycle of sensory reconnection, collective making, and resistance. It begins with withdrawal, cleansing, and fasting, where members disconnect from the controlled systems of 2086 through water, rest, and reflection. Following this, they gather to break the fast and restore connection through shared nourishment. The sequence then moves into cultivation, harvesting, making, and weaving, where crops, fibres, garments, and symbolic parcels are produced by hand. These acts culminate in the communal feast, the group's central ritual and ultimate act of rebellion. Finally, completed parcels are distributed throughout the city, carrying fragments of sensation, memory, and human connection back into the world beyond the ruins.



WITHIN THE RUIN: RITUALS OF RETURN

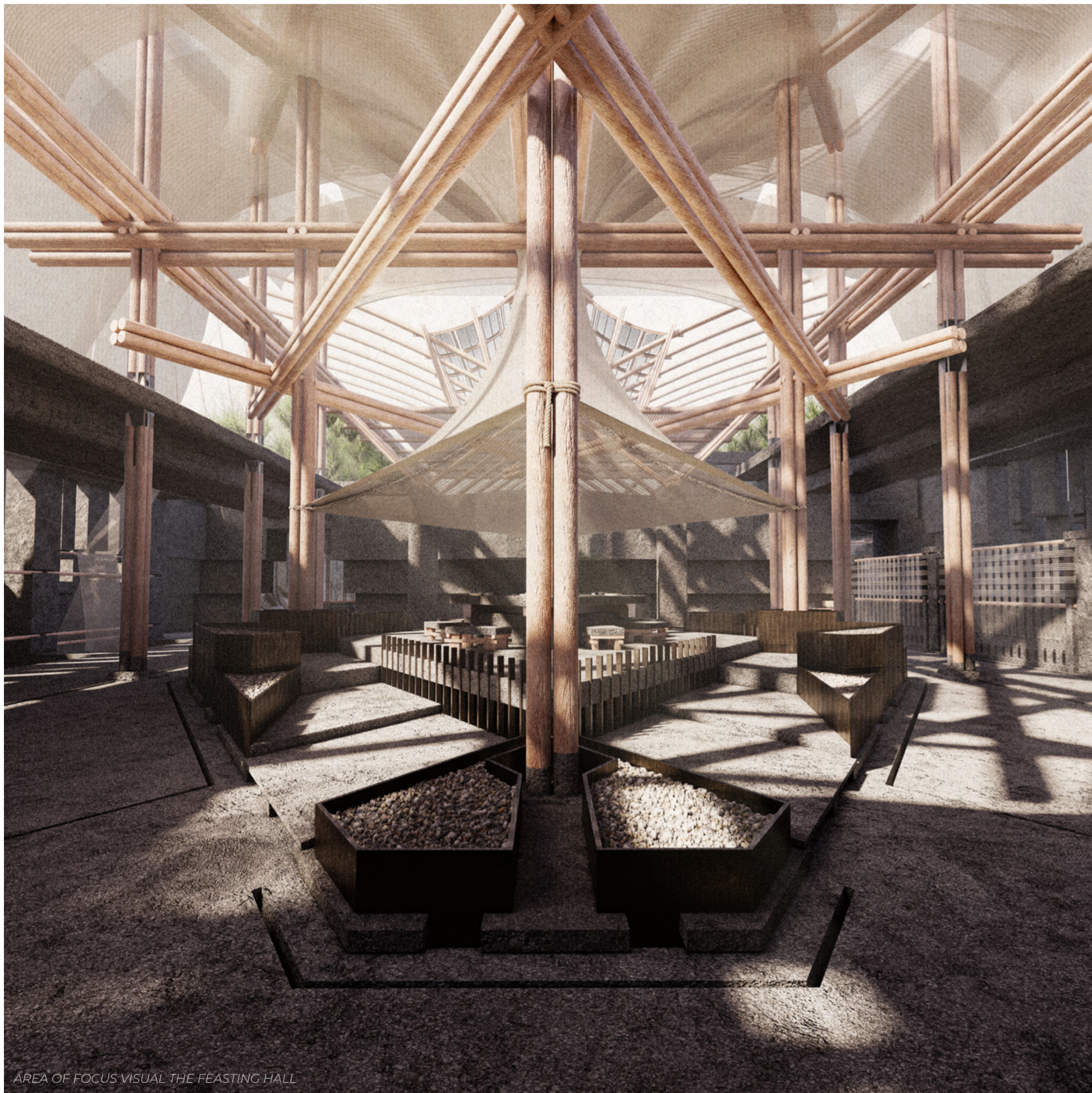
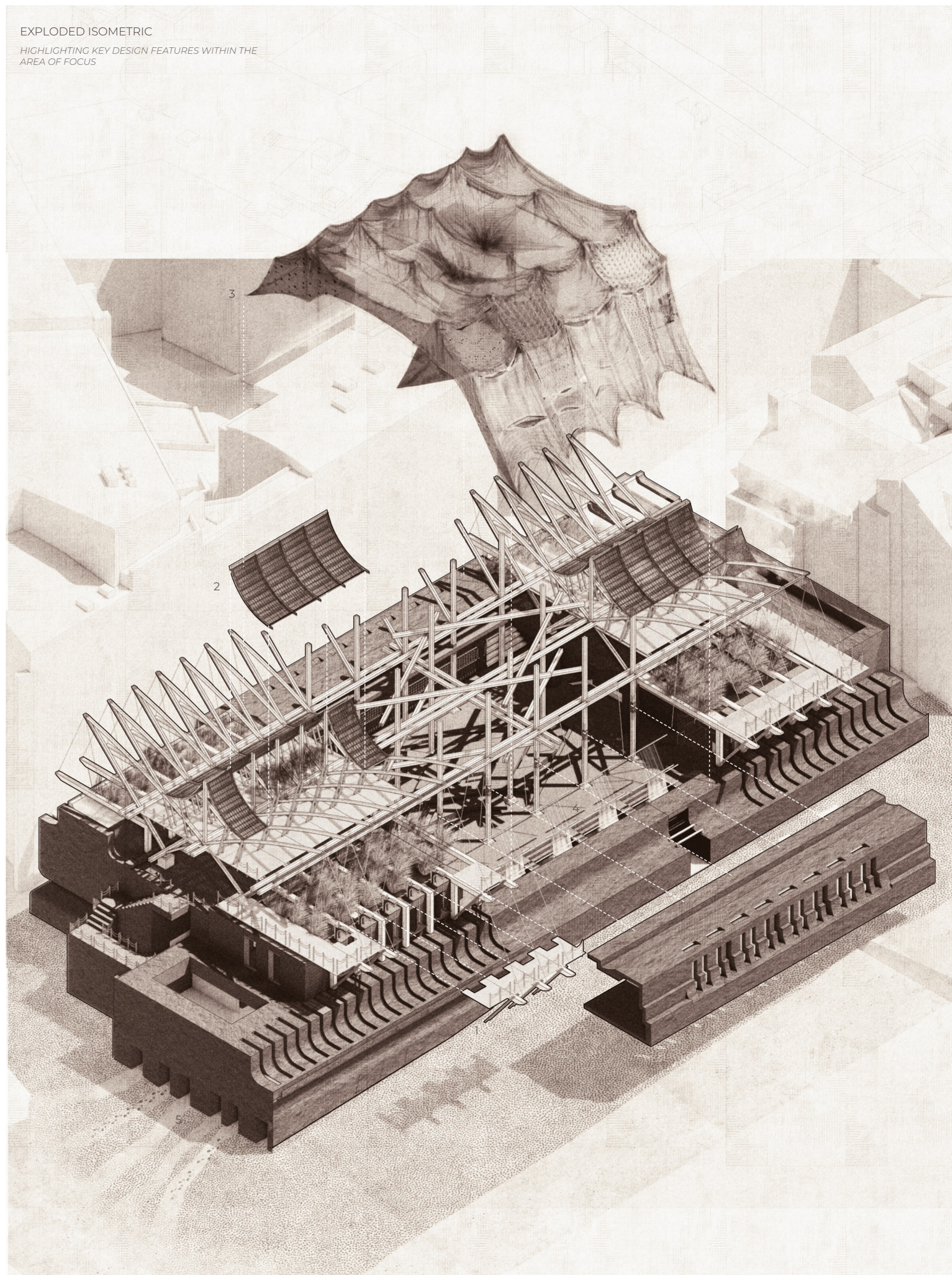
PROPOSED DESIGN

This exploded isometric illustrates the building as a layered system of cultivation, making, ritual, and distribution within the excavated remains of the former car park. A new upper structure forms a productive landscape where plants, fibres, and crops are grown amongst retained concrete beams from the original structure. An exploded section (1) reveals openings connecting directly to the fibre processing level below, where harvested materials are prepared and woven.

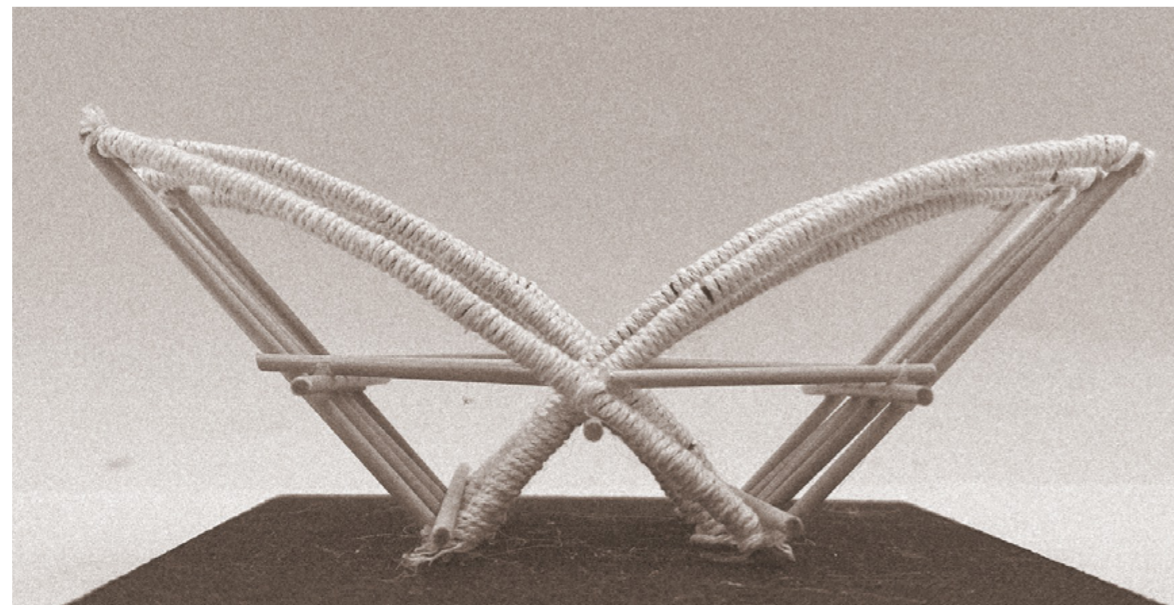
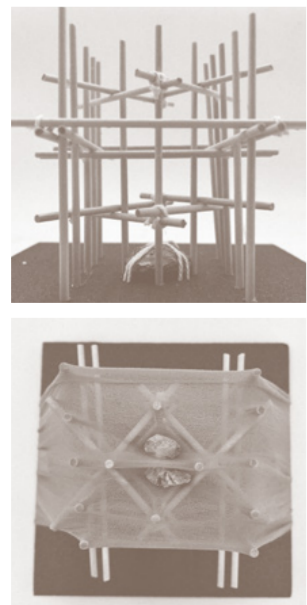
Above, the roof lifts away (2) to expose drying areas beneath woven canopies. At the centre, a fabric-draped roof (3) supported by timber columns marks the communal feasting hall below. A final section (4) reveals weaving looms embedded within the concrete, while hidden tunnels (5) connect the parcel drop station to the city beyond, allowing vessels of sensation to be discreetly distributed.

EXPLODED ISOMETRIC

HIGHLIGHTING KEY DESIGN FEATURES WITHIN THE AREA OF FOCUS



AREA OF FOCUS VISUAL THE FEASTING HALL



RELEVANT DEVELOPMENT MODELS

WITHIN THE RUIN: RITUALS OF RETURN
PROPOSED DESIGN

SITE PLAN

The site plan drawing illustrates the proposed design in relation to its wider surroundings in Nottingham. On the right-hand side, it shows how the new development sits within the existing urban context, helping to explain its scale, orientation, and relationship to nearby buildings, streets, and open spaces.



DEVELOPMENT PROCESS

Throughout my development process, I experimented with photographing concrete and timber interventions to explore material contrast, texture, and spatial composition. I then began sketching over these photographs to develop a secondary architectural language that could inform smaller, more detailed moments within the design. This iterative approach allowed me to investigate different spatial qualities, atmospheres, and activities occurring across the site. By layering drawing over image, I was able to test how form and material might interact, particularly in relation to light, structure, and depth.

PROPOSED KEY PLAN

CORE RITUALS

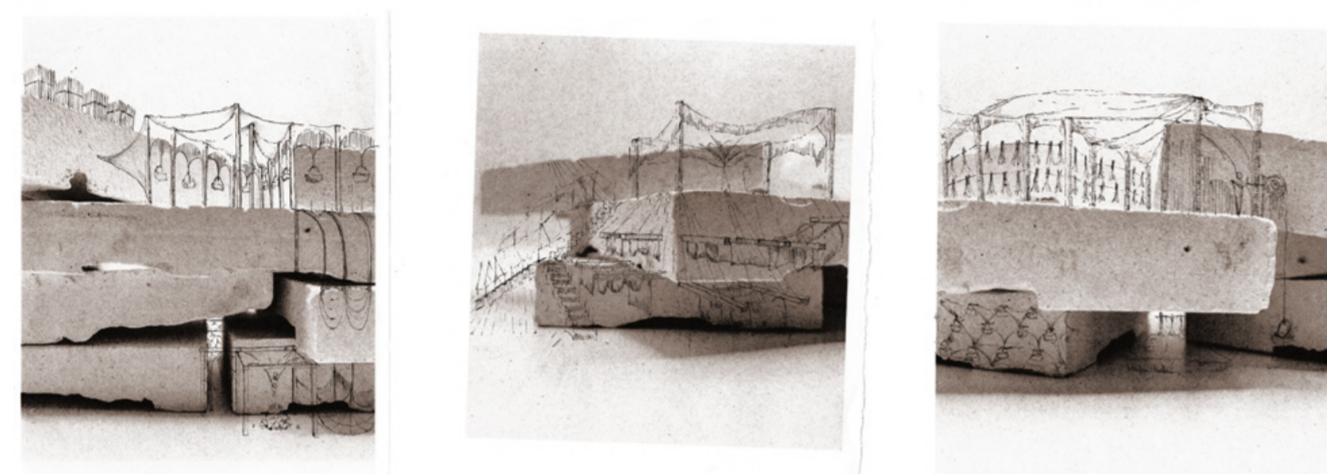
Not to scale



KEY:

1. Fibre preparation area
2. Weaving stations with looms
3. Parcel drop to parcel distribution tunnels
4. Food prep and cooking space with hearth
5. Parcel assembly area
6. Garment assembly area
7. Pigment and dyeing fabric workshop
8. Feasting table

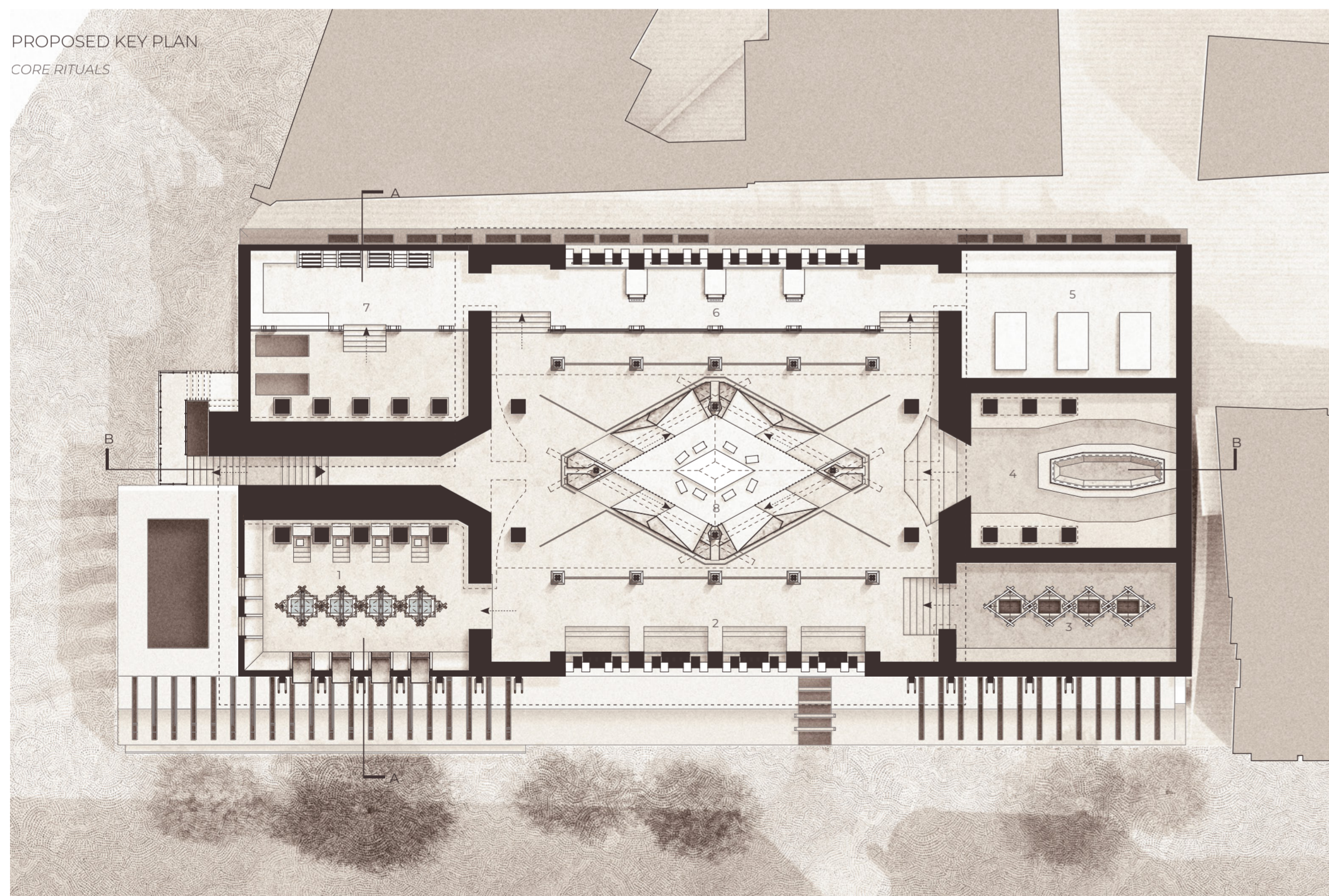
SITE PLAN



DEVELOPMENT PROCESS

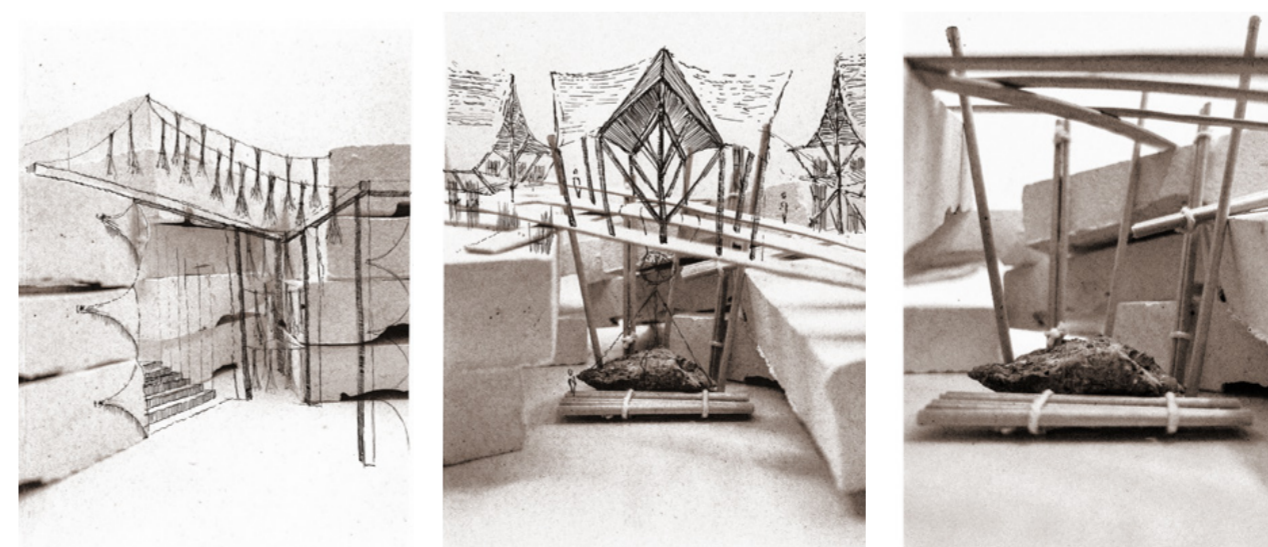
PROPOSED KEY PLAN

CORE RITUALS



AREA OF FOCUS VISUAL | THE FEASTING HALL

The proposed structure, inspired by earlier conceptual models, creates a dramatic sensory environment in which intricate shadows are cast across the space. Above the feasting table, a fabric canopy woven collaboratively by the group frames and anchors the central focal point.



SPATIAL DEVELOPMENT



INTEGRATED WEAVING LOOM

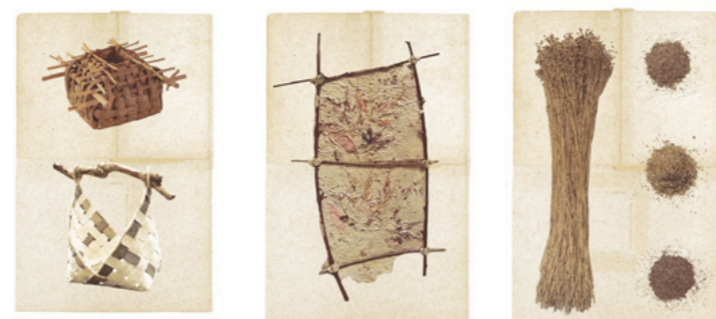


SECTION B.B

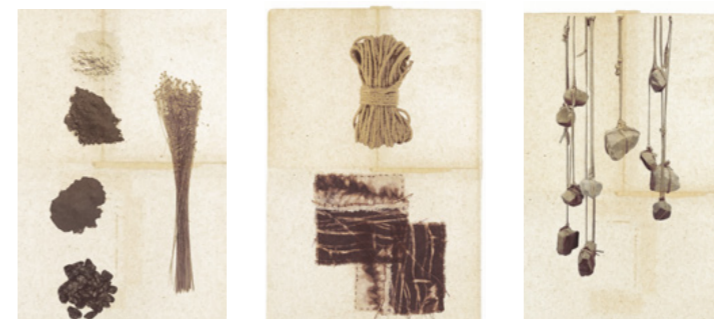
This long section cuts directly through the centre of the building and communicates the relationship between the main inserted structures and the large hearth located toward the rear of the site. The drawing reveals the gradual transition from enclosed, excavated spaces within the concrete ruin to lighter and more open environments above. Cultivation canopies flank either side of the section, creating productive landscapes for growing crops, fibres, and herbs, while the communal feasting hall occupies the centre of the composition beneath a fabric-draped roof supported by timber structures. Together, these spaces illustrate the building's progression from withdrawal and making toward gathering and collective ritual, with the hearth acting as a focal point for warmth, nourishment, and community.



SENSORY GARMENTS



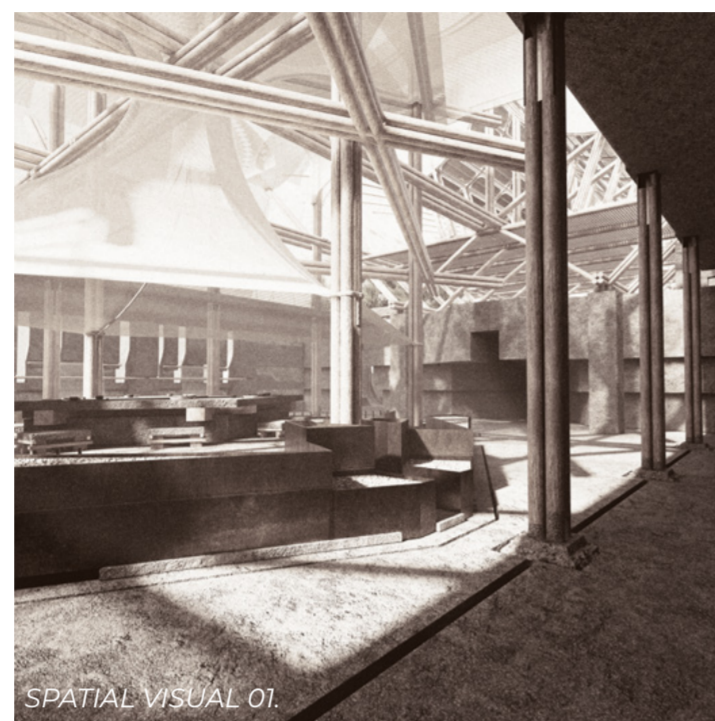
VESSELS OF SENSATION



HAND - CRAFT AND CONCRETE RECYCLING

THE VESSELS OF SENSATION

The vessels of sensation are hand-crafted parcels created by the Hollowers and distributed throughout the city as quiet acts of resistance. Containing woven garments, natural fibres, whole foods, herbs, and symbolic objects, each parcel is designed to reawaken the senses and remind people of a forgotten way of life. More than simple packages, they act as carriers of memory, sensation, and human connection, offering fragments of an alternative future beyond the controlled systems of 2086.



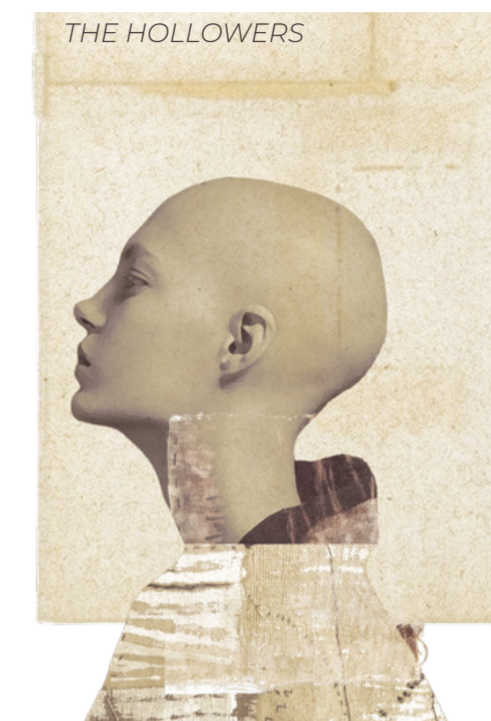
SPATIAL VISUAL 01.



SPATIAL VISUAL 02.



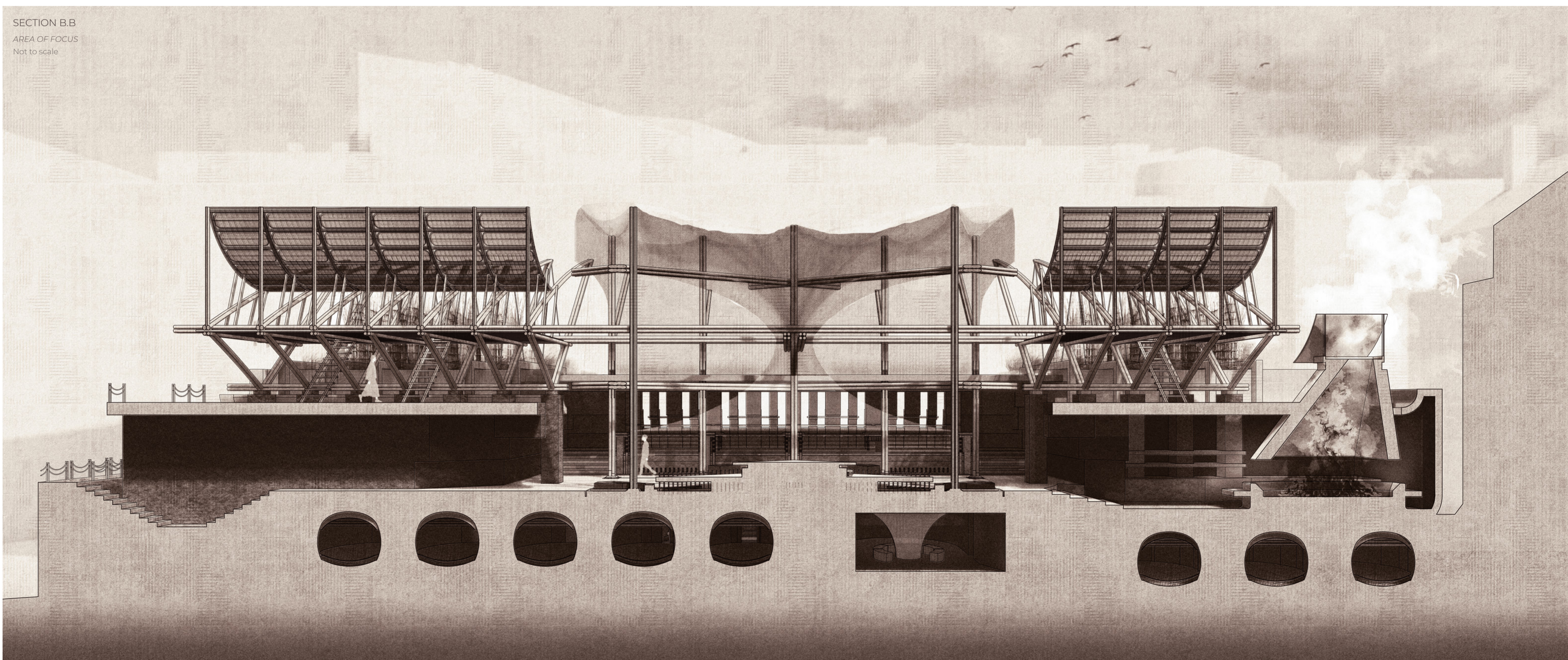
SPATIAL VISUAL 03.

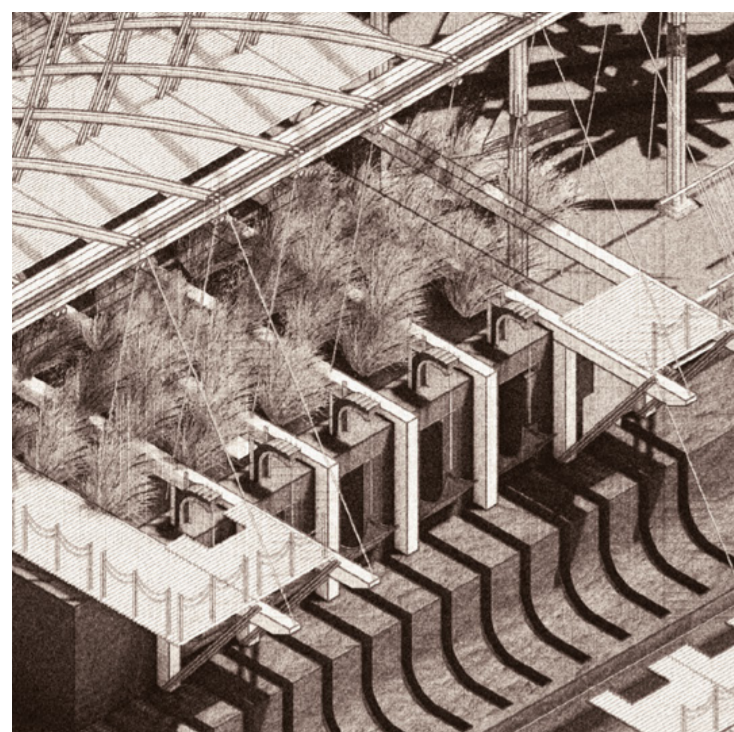


THE HOLLOWERS



SECTION B.B
AREA OF FOCUS
Not to scale





A. FIBRE CULTIVATION CANOPY

The harvesting structure sits above the excavated concrete ruins, creating an open growing landscape where fibres, grasses, herbs, and crops are cultivated, dried, and prepared for use throughout the building. Supported by a lightweight timber framework, the structure contrasts the heavy concrete mass below while remaining connected to the existing car park frame. Above, a detailed woven canopy roof filters light into the space, partially shielding the growing areas while allowing sunlight, airflow, and rainwater to pass through.

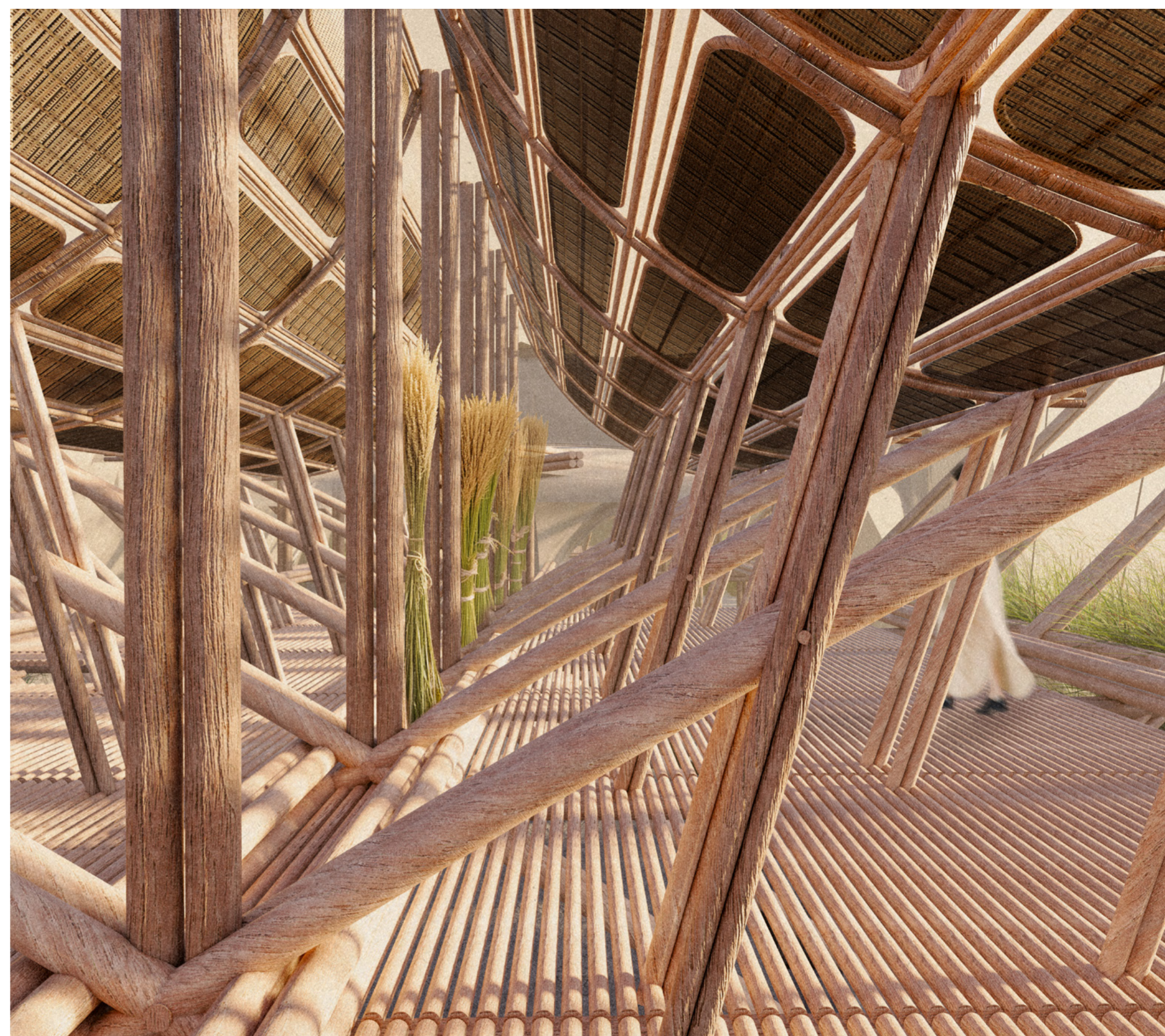
B. FIBRE PREPARATION AREA

B.1 This visual shows the connection between the upper growing areas and the fibre processing room below. Harvested fibres are dropped down through collection points into the processing space, allowing materials to move directly between levels. Through the openings, the retained concrete beams of the existing car park remain visible, reinforcing the relationship between the new interventions and the excavated structure.

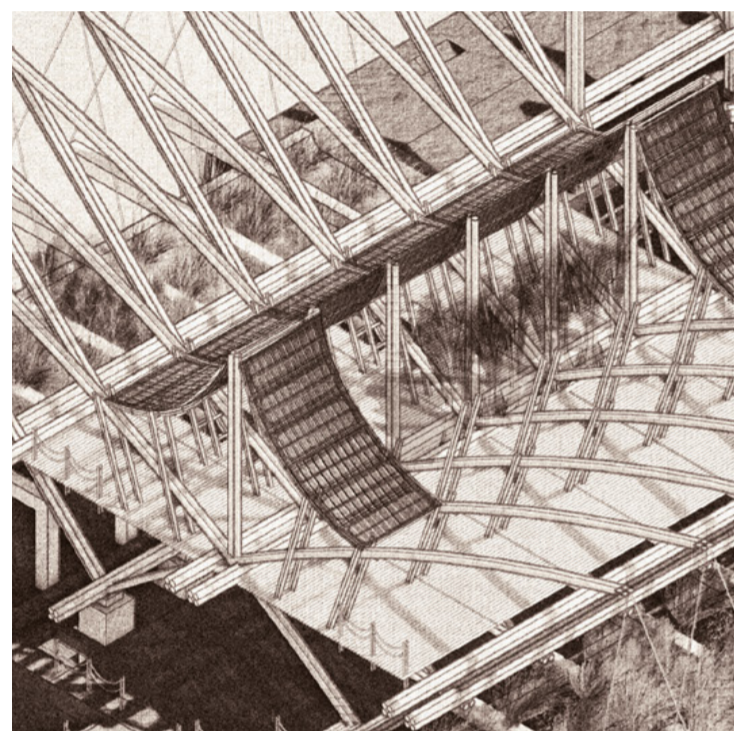
B.2. At the centre of the room, water wells store and filter rainwater collected from the growing areas above, providing water for washing and processing the fibres. Metal chains guide the water down into the wells, creating a visible connection between the upper cultivation spaces and the processing level below.



CANOPY DETAIL



A. THE FIBRE CULTIVATION CANOPY



SECTION A.A

RITUAL SEQUENCES

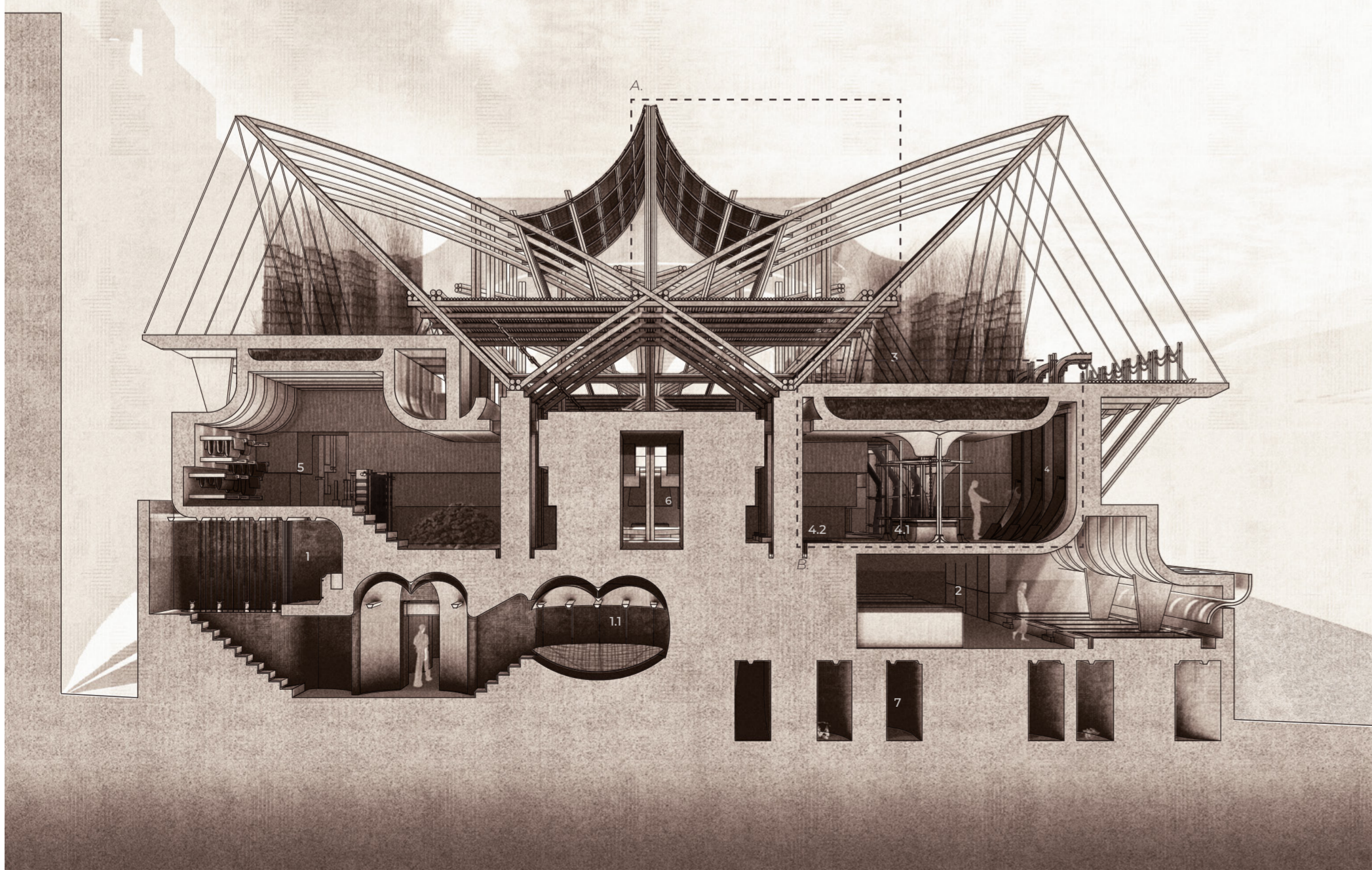
Not to scale

The spatial sequence begins within the withdrawal chambers and sleeping pods, where members cleanse, fast, and restore natural rhythms before re-entering collective life. They then gather within the first meal space, where fermented foods and fresh herbs are prepared and shared. Above, open-air growing areas cultivate fibres and crops, which are transferred through fibre drop shafts into processing spaces below. Water from the growing beds is filtered and reused for washing fibres, which are then combed, dyed with crushed concrete pigments, and dried before becoming garments. The sequence culminates within the communal feasting hall before ending at the parcel export tunnels, where completed parcels are distributed into the city.

KEY:

- 1. Withdrawal cleansing chambers
- 1.1 Sleeping pods
- 2. The first meal after the fast
- 3. Open air fibre growing and harvesting level
- 4. Fibre drop collection point
- 4.1 Water wells collected and filtered from the growing fibres above
- 4.2 Fibre combing benches
- 5. Fabric dyeing and pigment crushing room
- 6. Entrance to feasting hall
- 7. Parcel export tunnels

SECTION A.A



B.1. FIBRE DROP SHAFTS



B.2. WATER WELLS - FILTERED FROM ABOVE