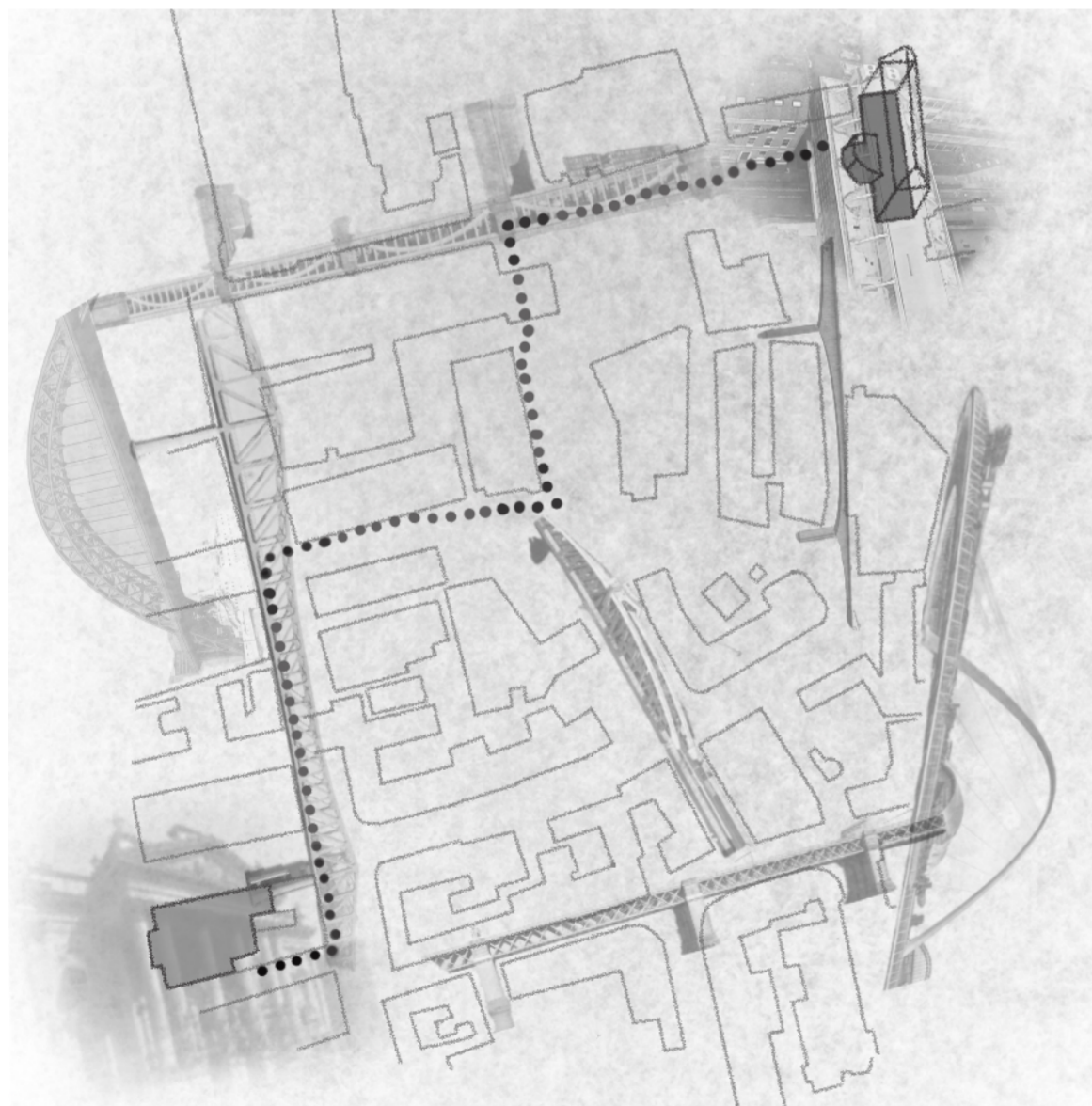


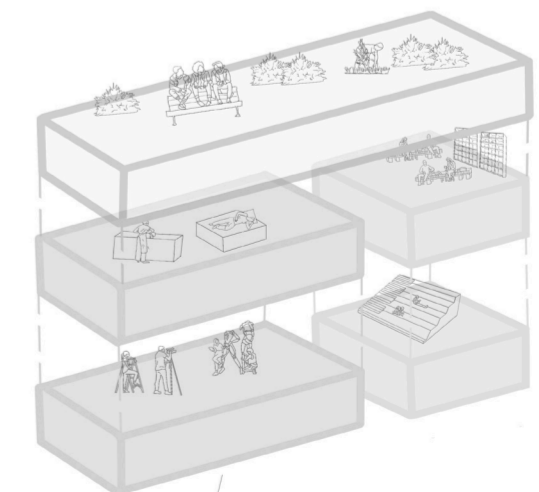
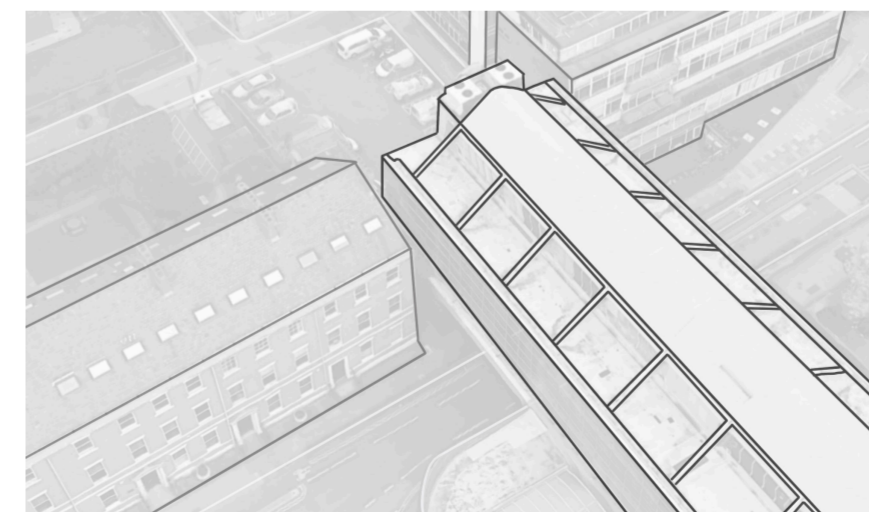
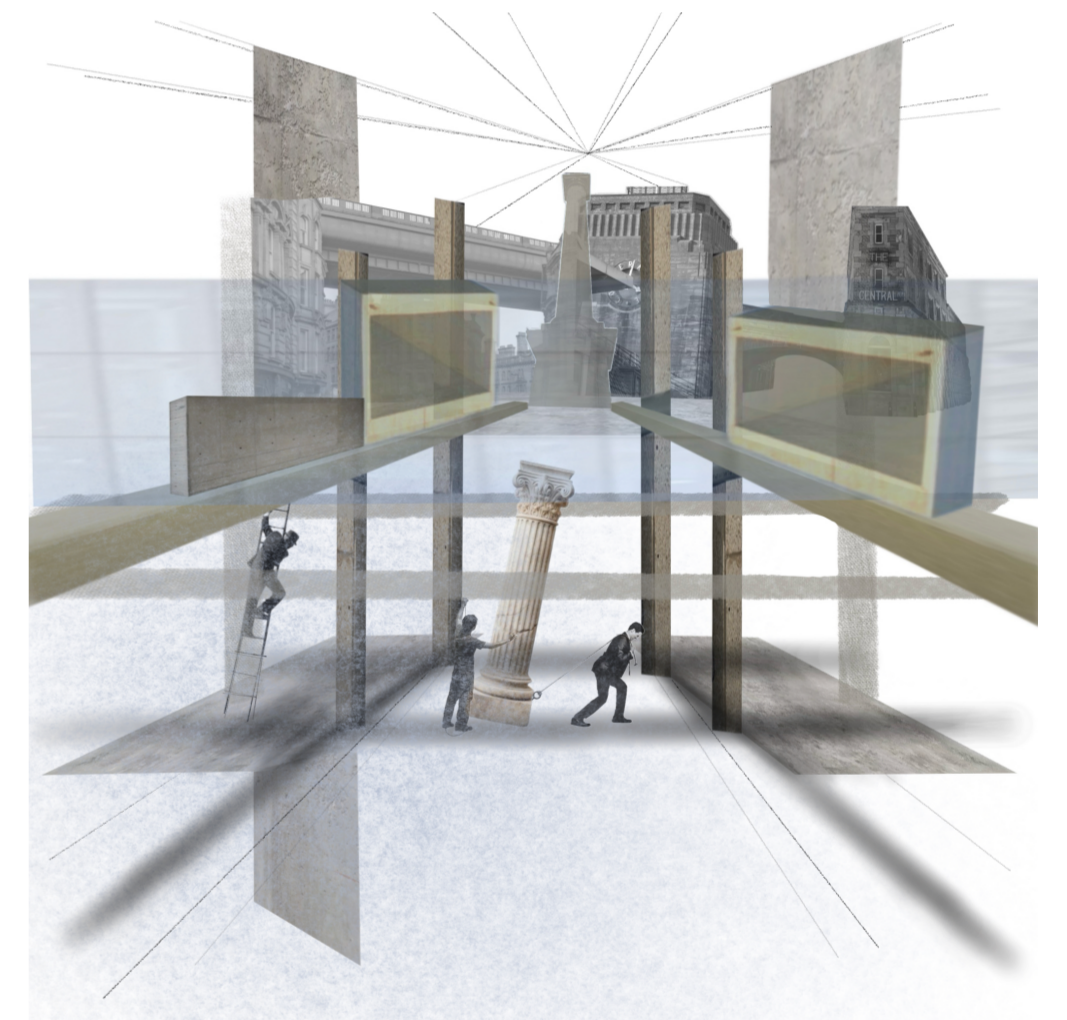
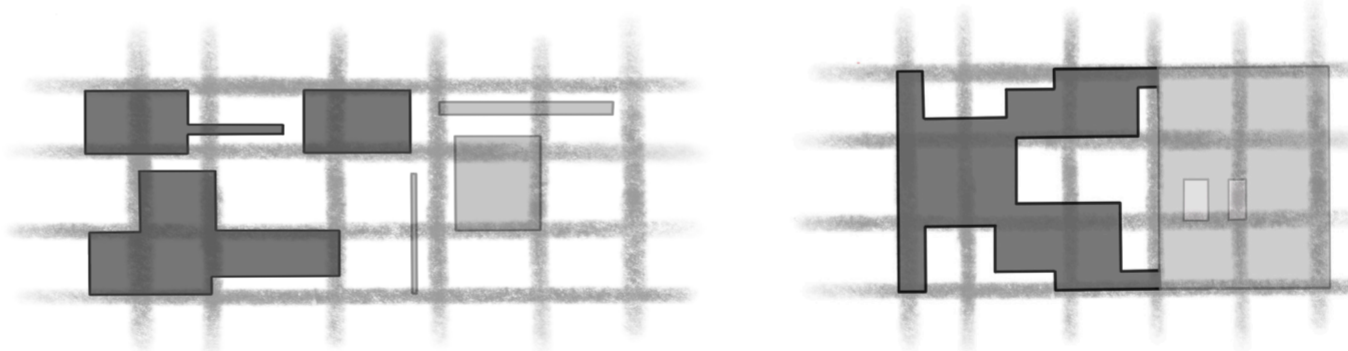
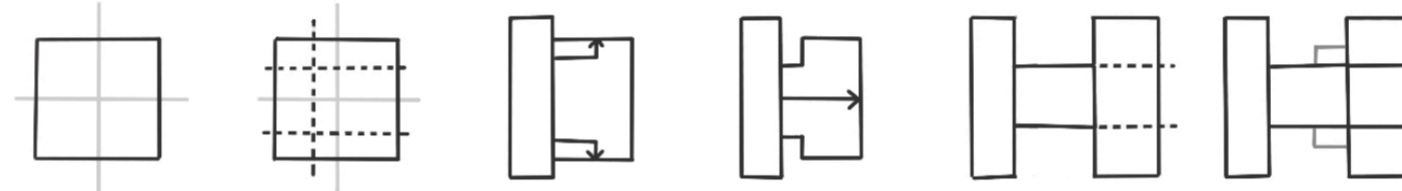
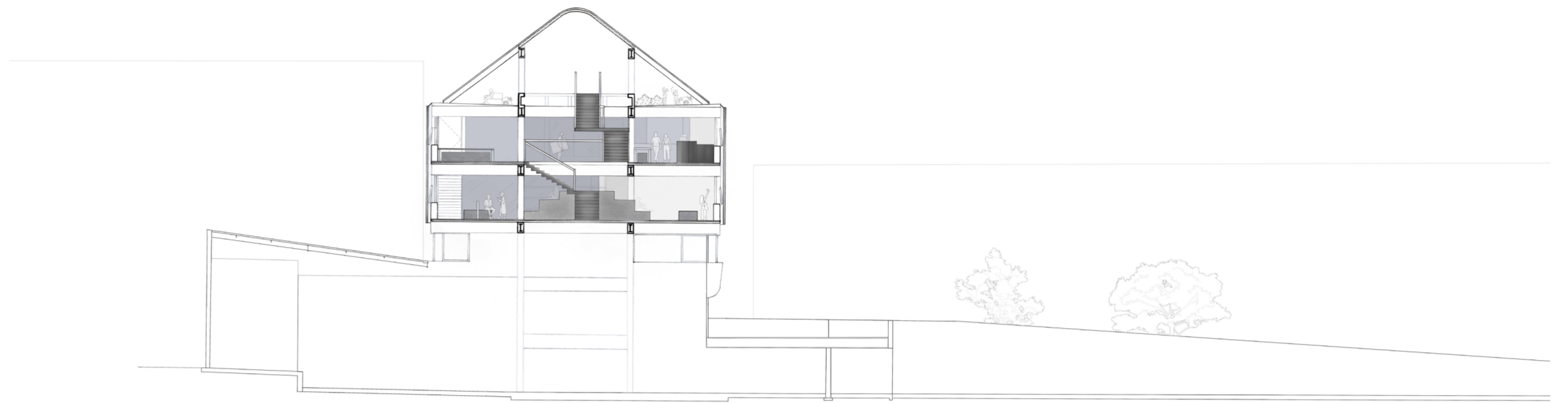
# RE-IMAGINE THE STAGE BEFORE THE SET

Wen Zhou

This project reframes the MEA House in Newcastle as an Interior city, creating a shared artist-in-residence unit for a theatre director and set designer that sits beside a vibrant heart, drawn from the existing fabrics through adaptive reuse. Inspired by Newcastle's seven bridges and urban streets that weave the workshop and living unit in one continuous interior facade, blurring inside and out. Adaptable furniture and material shifts act as thresholds between making and living, softly modulating atmosphere and the line between public and private. MEA House itself becomes the stage, morphing every act into a quietly performed, lived experience.



Site plan framed by the city's seven bridges, stitching together the city's streets to form the conceptual position of the scheme. A route traces the journey from MEA House to the Theatre Royal, mirroring the patterns of the Theatre Director and Set Designer's life. This journey anchors the 'Interior City' concept, bringing Newcastle's urban life inside.



3rd Floor

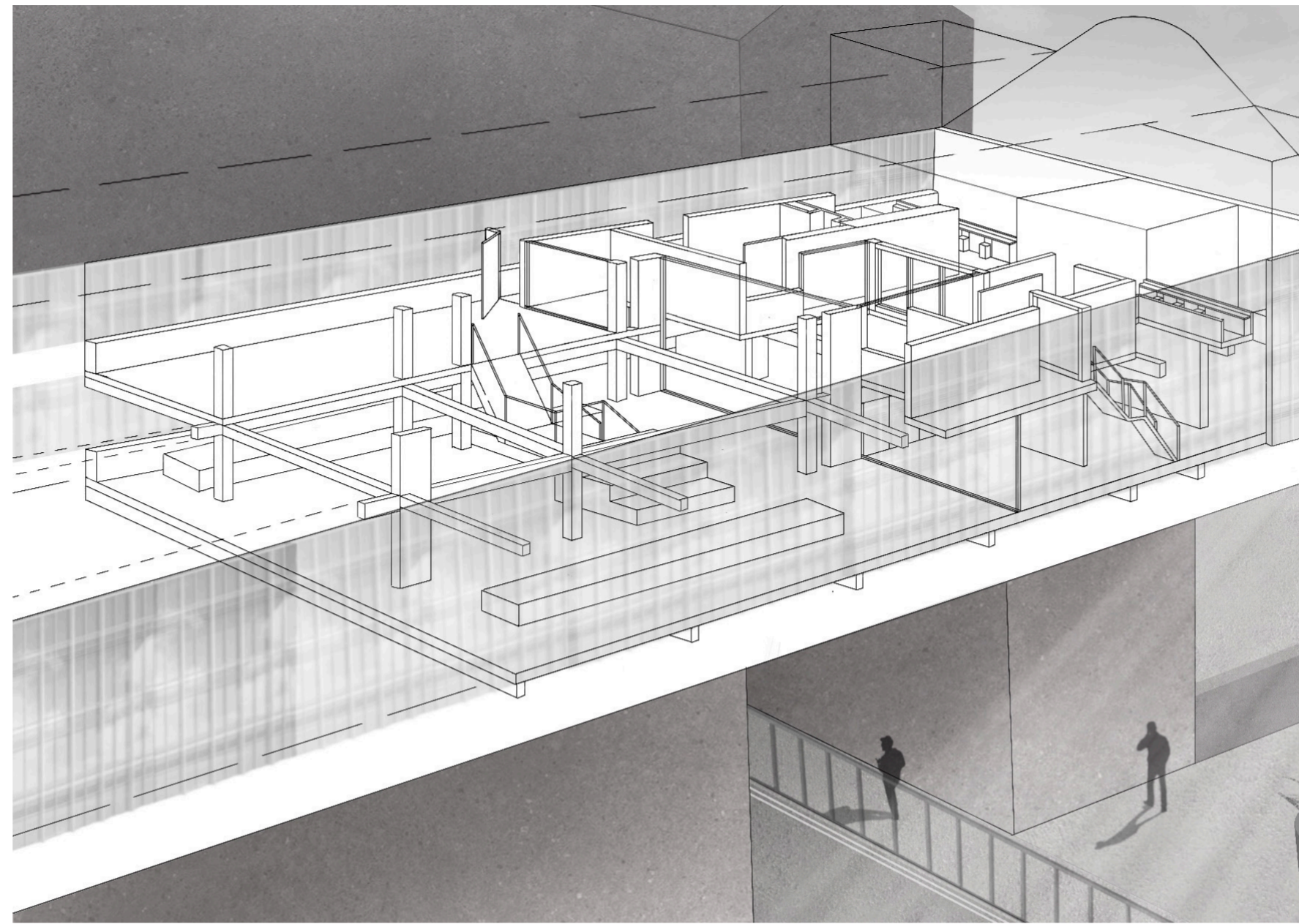
- A. Double height workshop, visible from all spaces through the use of glass and voids
- B. Built-in storage used to store set tools and any other equipment
- C. Stair soffit

4th Floor

- D. Set designer's bedroom with an open bathroom
- E. Corridor leading to shared kitchen
- F. Glass facade, going across entire living unit with view of the workshop
- G. Theatre director's bathroom
- H. Balcony used as a reading space with movable fitted seating and shelves

5th Floor

- I. Garden
- J. Structural glass floor



Vibrant heart

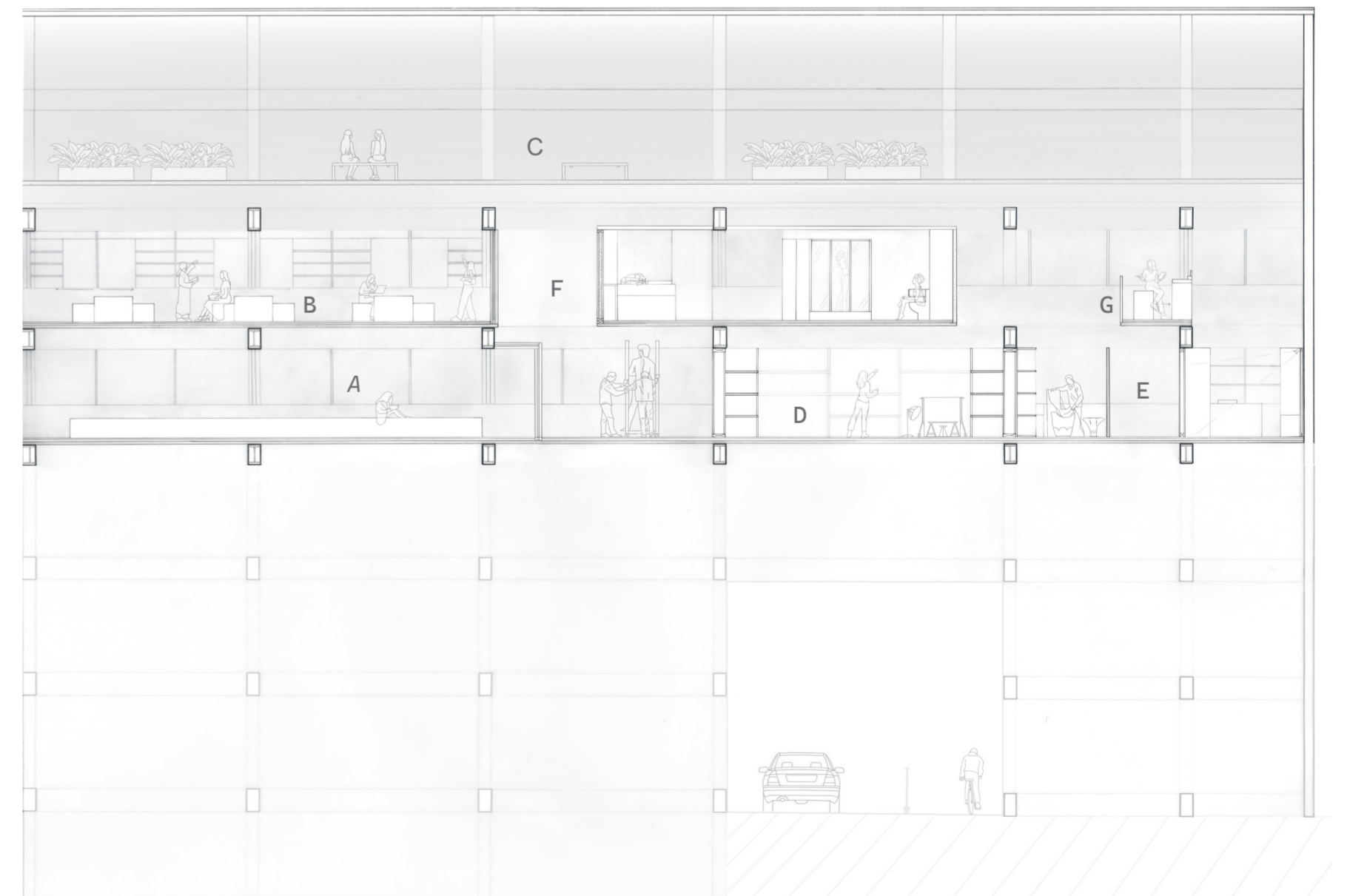
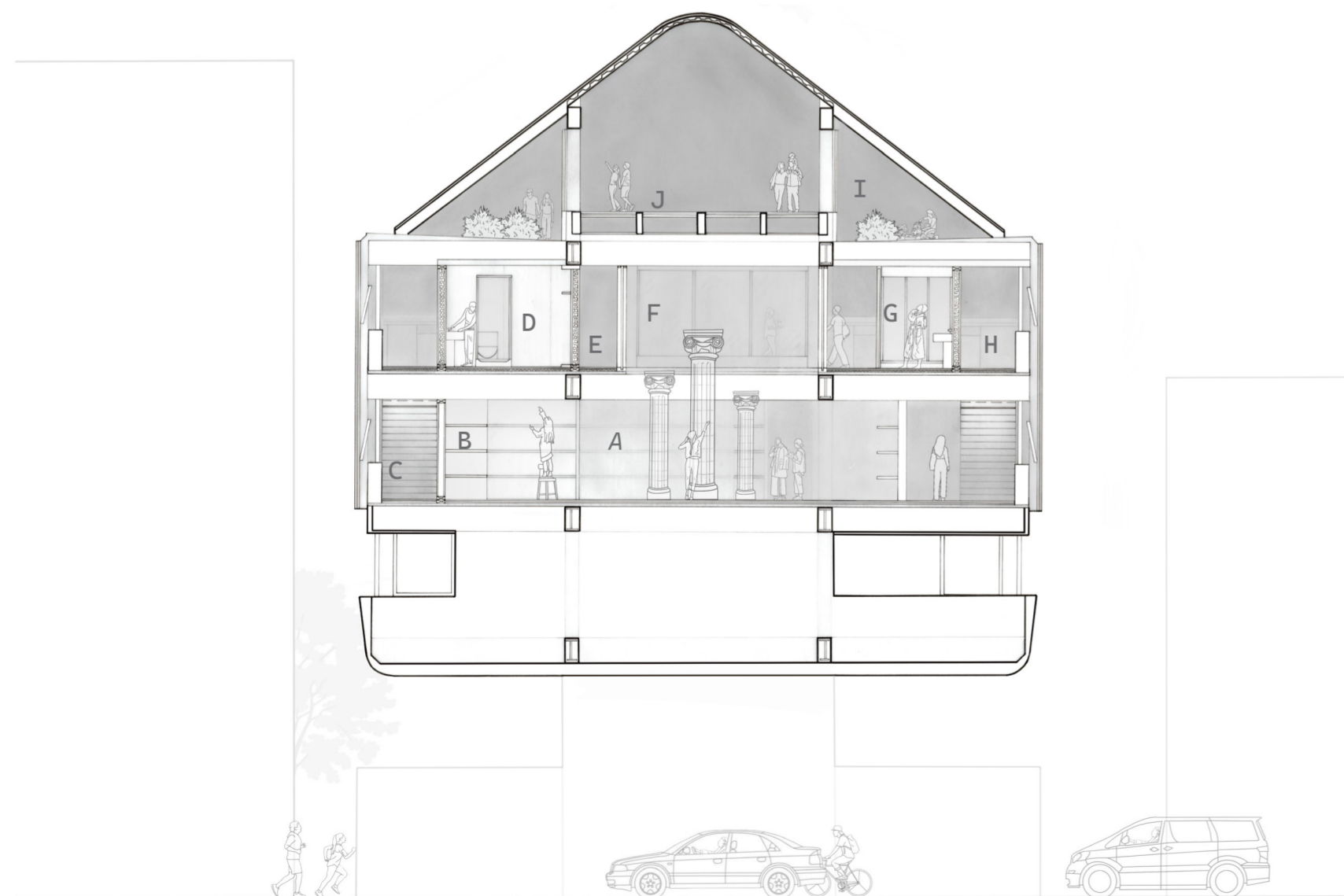
All spaces covered by a glass facade looking into workshop

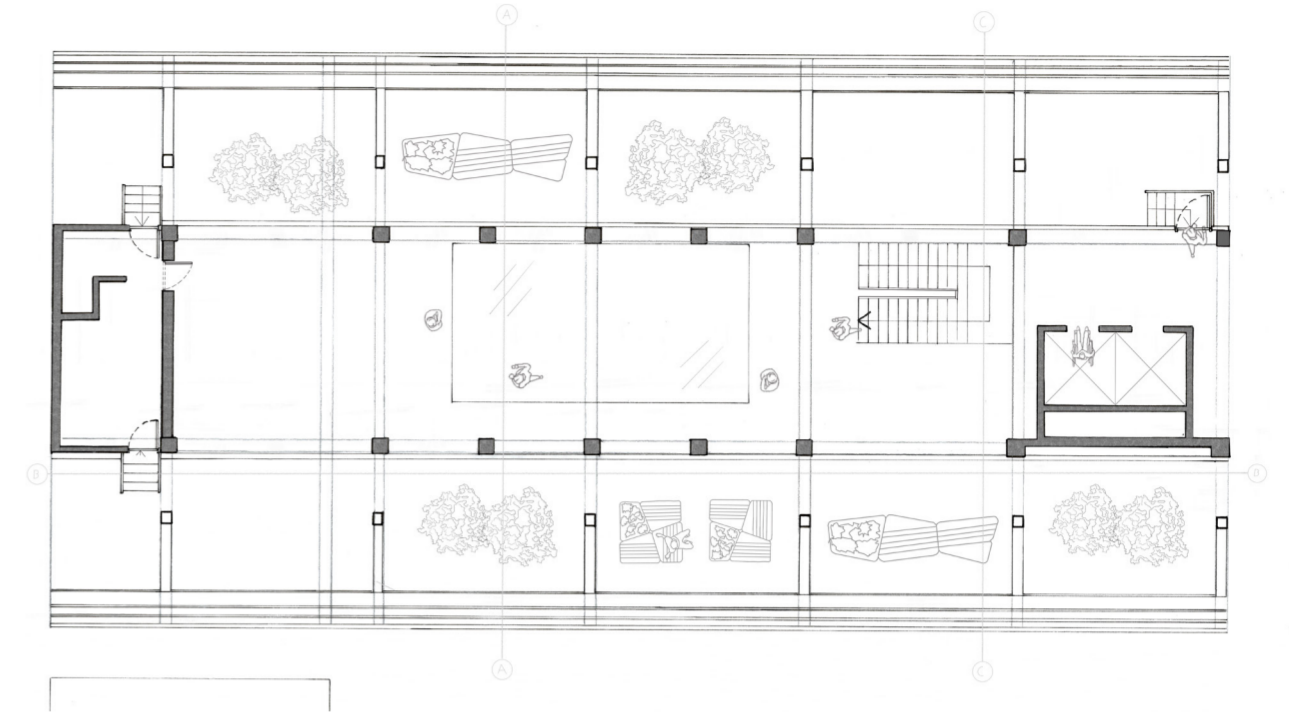
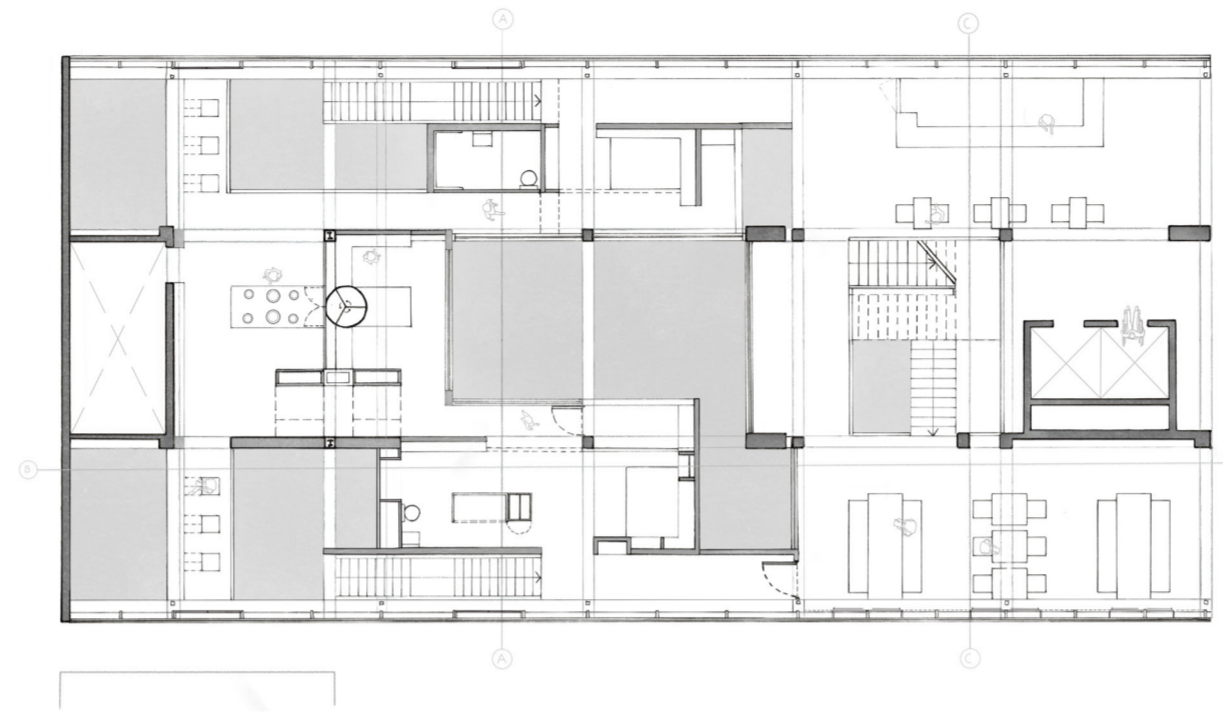
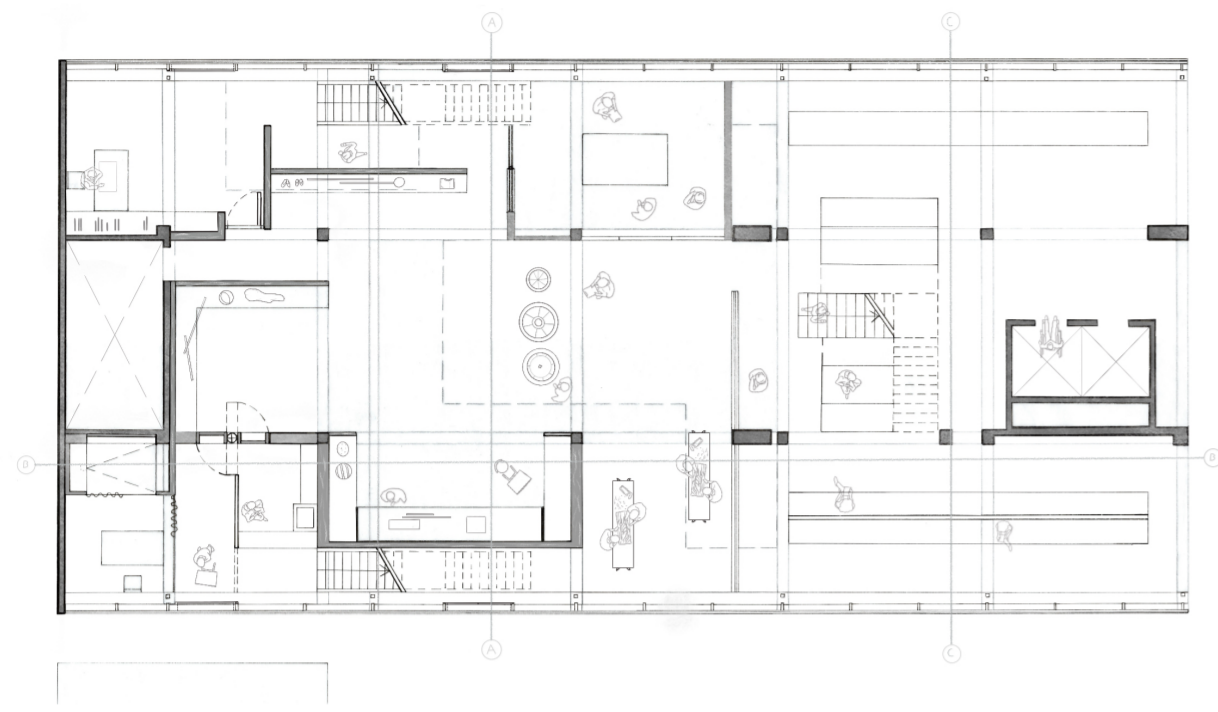
- A. Seating area
- B. Quiet reading space
- C. Rooftop garden

Artist-in-resident

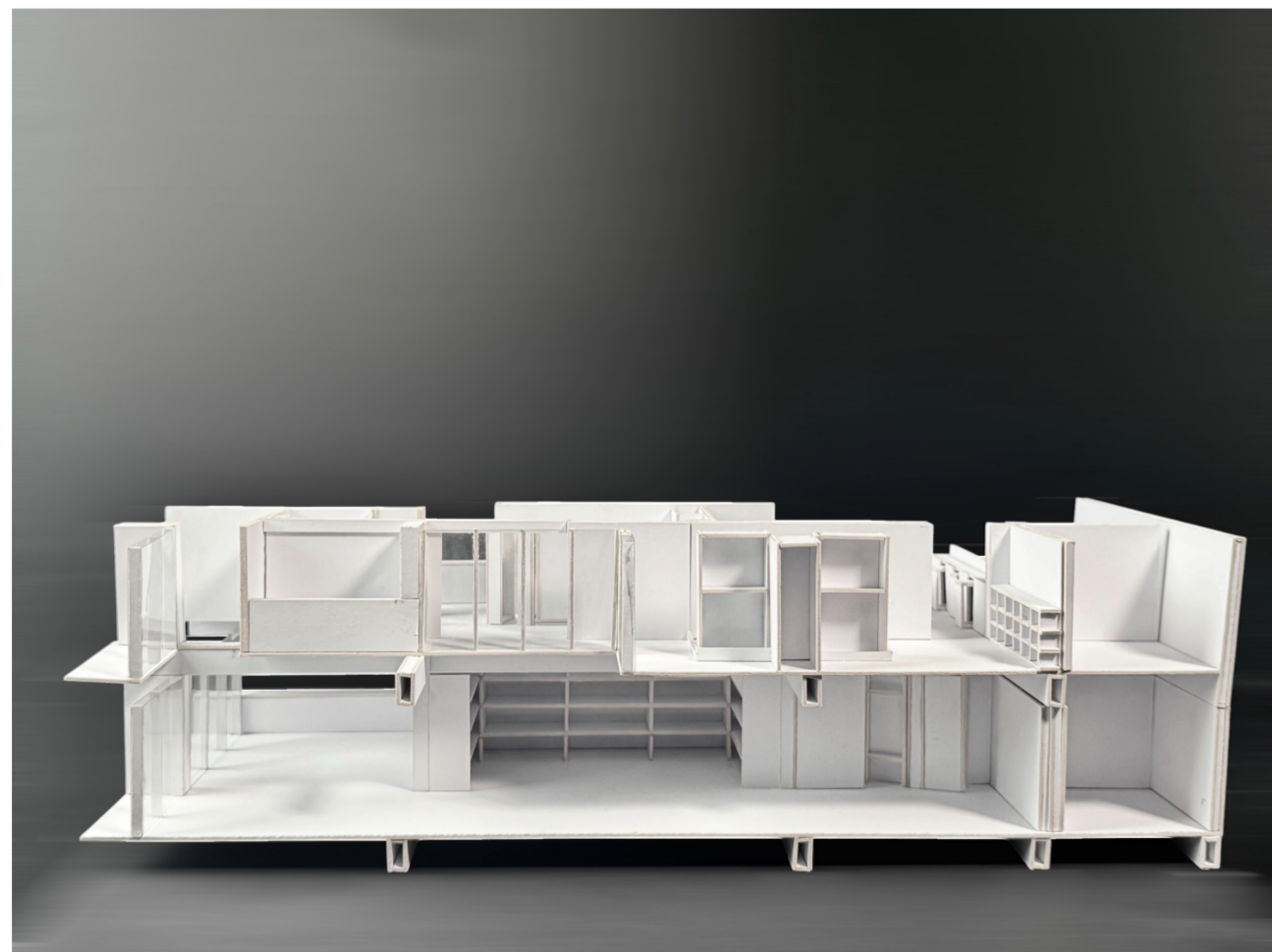
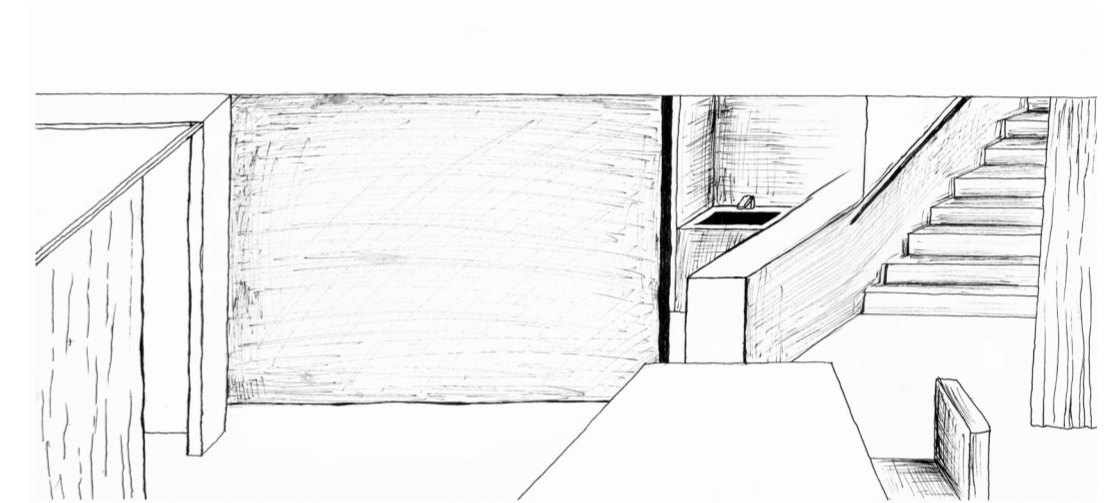
Mirrored scheme with change in layouts

- D. Built in storage unit
- E. Set designer work studio, connected directly to the bedroom, separated by a sliding panel that gives access to staircase
- F. Private corridor accessing vibrant heart
- G. Bridge used as a reading space, looking below to work studio

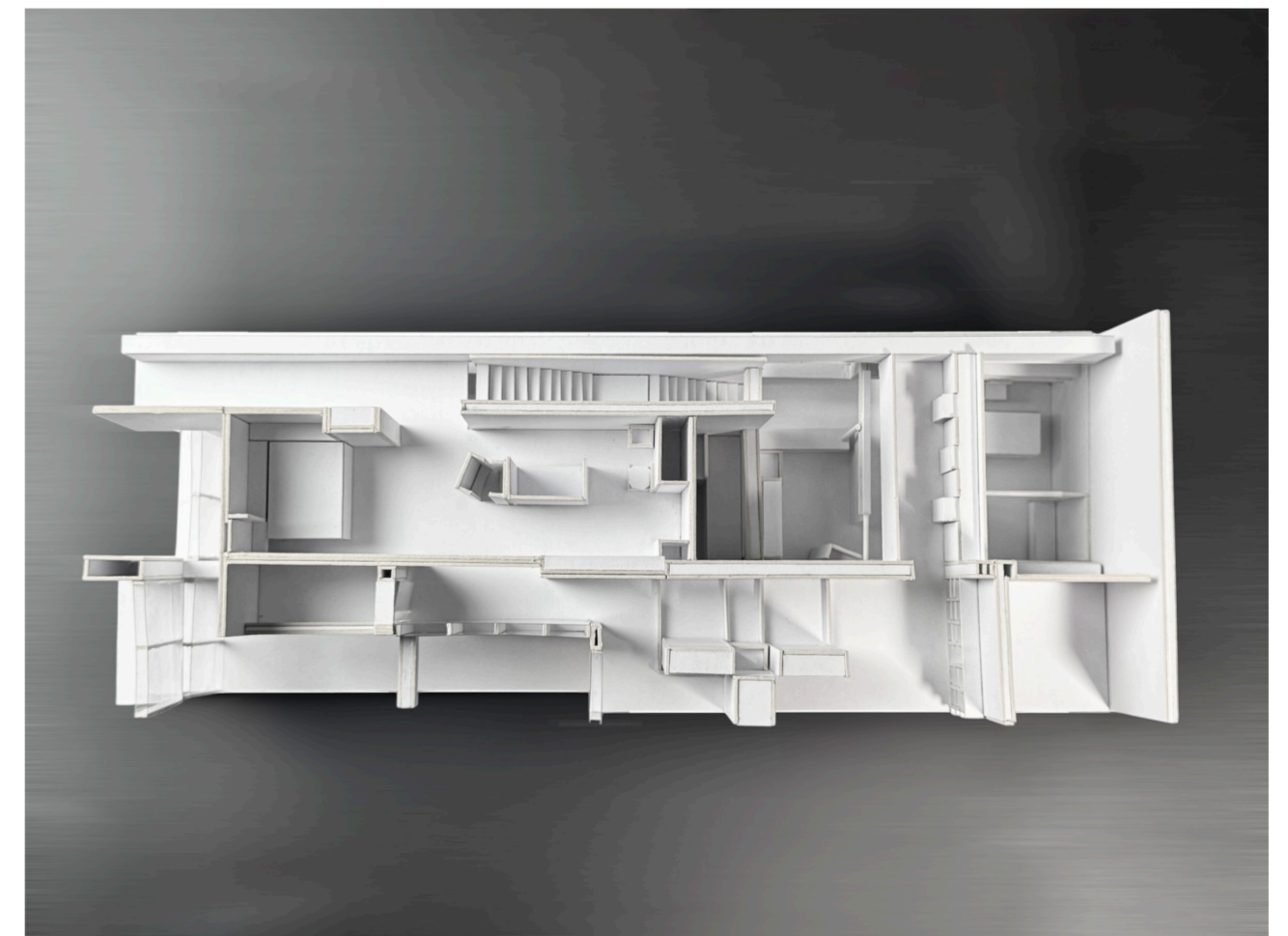
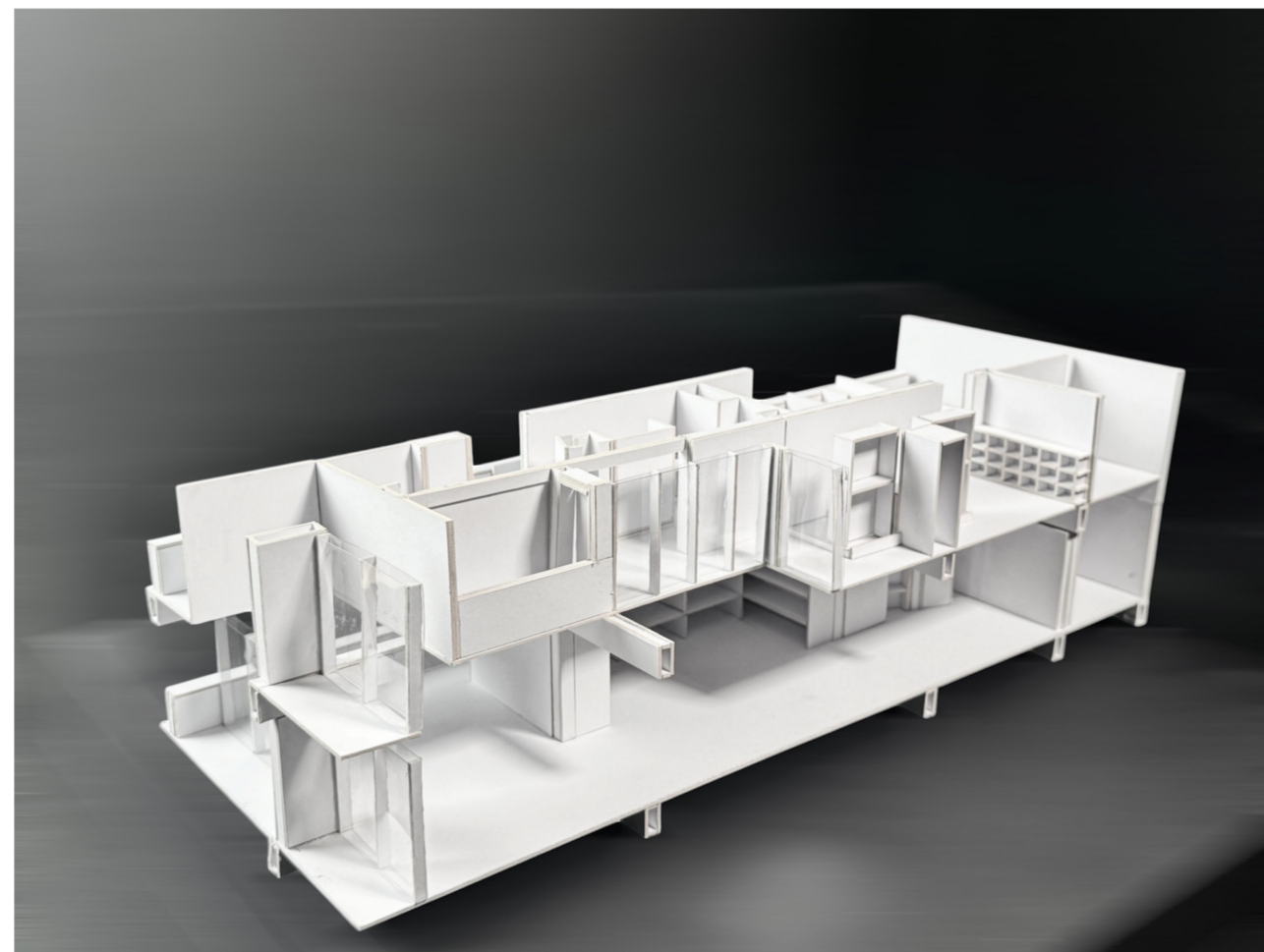




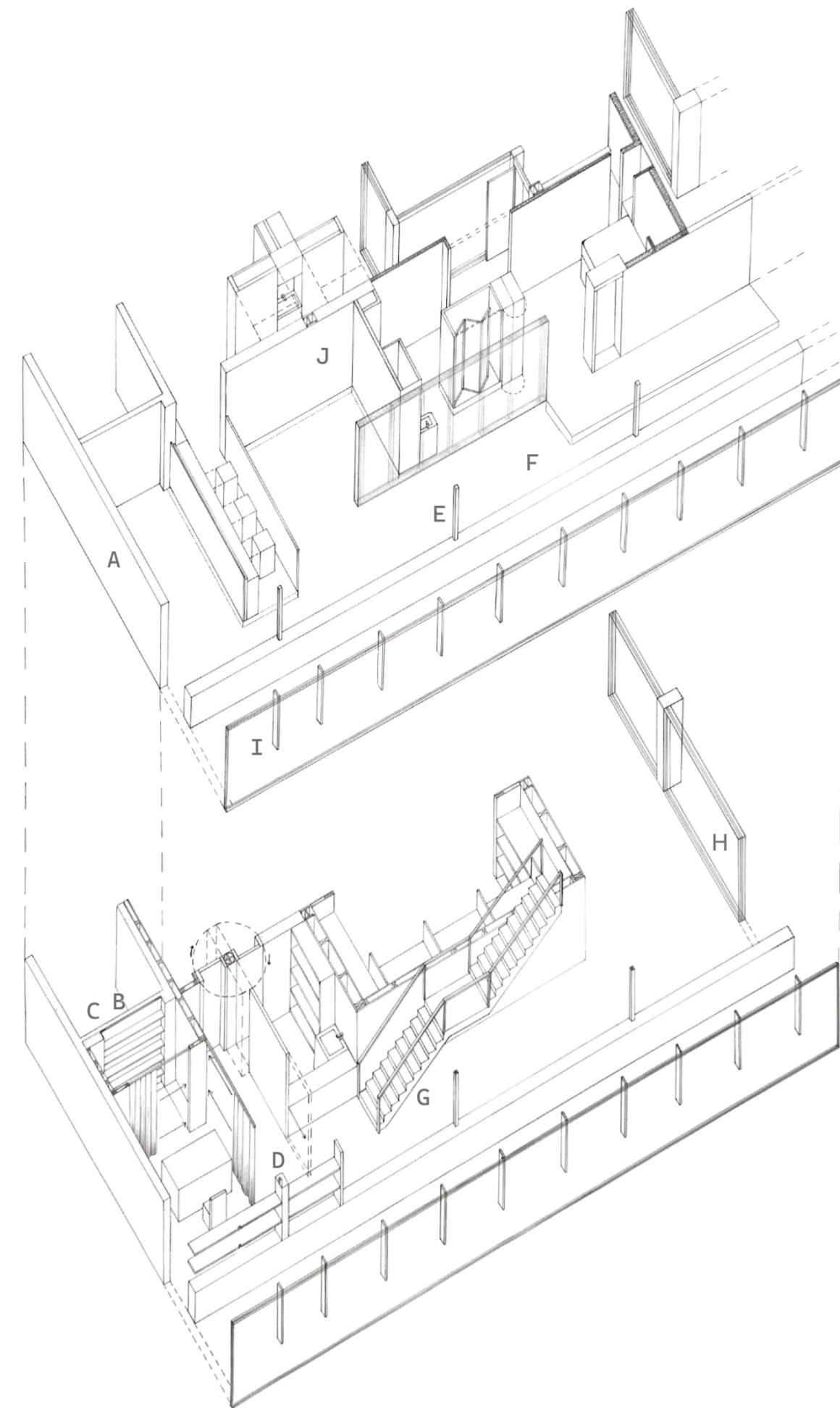
Spatial Strategy



1:50 Section Model



## 1:50 Exploded Axonometric



### Specifications

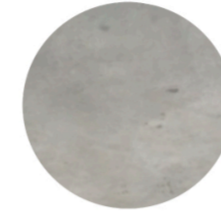
- A. Existing reinforced concrete core
- B. 80mm Recessed timber stud shelf (195mm shelf span)
- C. 580mm x 275mm Concrete column
- D. New expanded concrete Encasement covering vertical steel hanger
- E. Existing covered steel hanger
- F. Existing Laminated ledge
- G. Steel stairs with spotted gum threads
- H. 200mm Double glazed toughened acoustic glass
- I. 100mm Double glazed toughened acoustic Low-E glass
- J. 330mm Concrete wall covering existing I beam

### Materials



Used for 4th floor finish in vibrant heart, brings in warm tone for a quiet relaxing space

Sealed CLT panel



Sealed Concrete finish

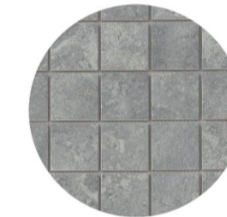
Used across work shop and kitchen space

Used for 3rd floor finish in vibrant heart, ensuring the atmosphere flow from the workshop

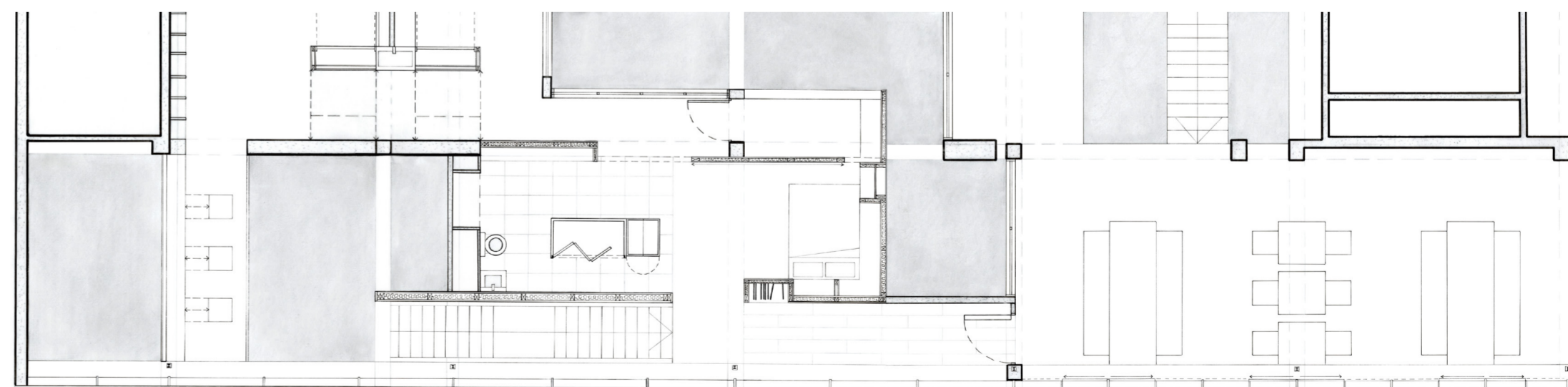
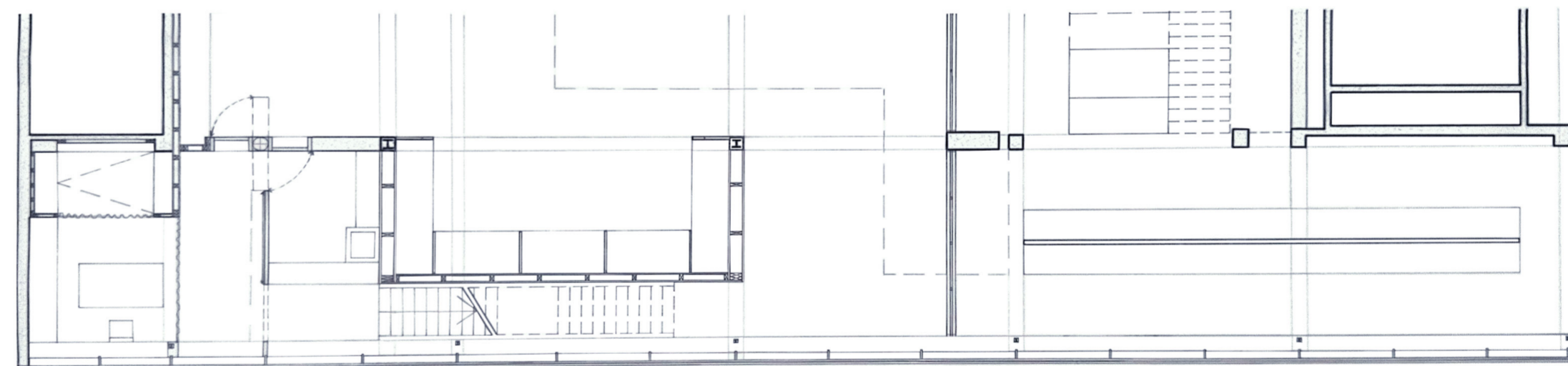


Painted CLT panel

Used for bathroom finish in living unit, useful in an open bathroom due to its high water resistant quality



Porcelain tile



# STORYBOARD

