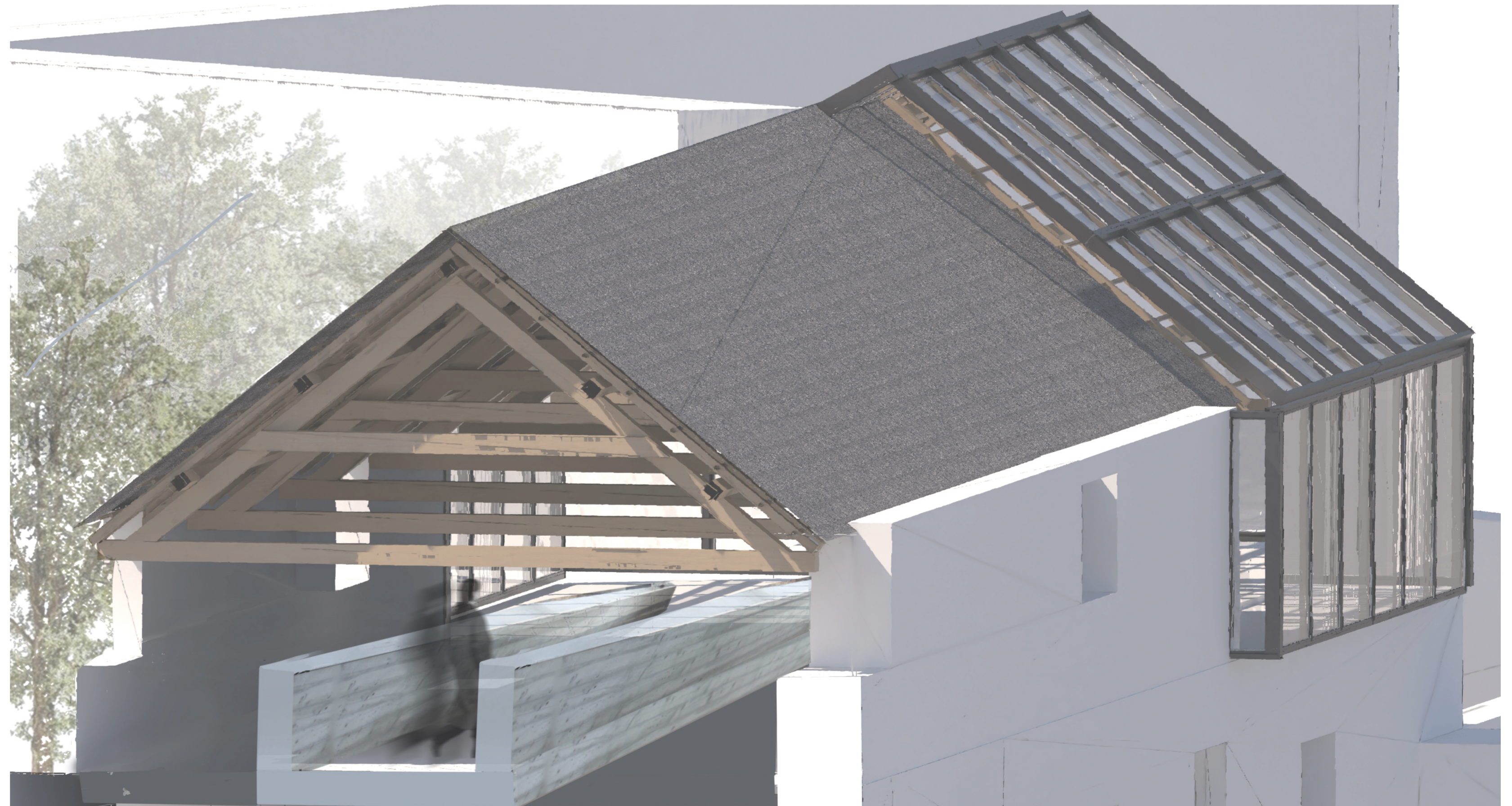


AYDON CASTLE CIDER HOUSE

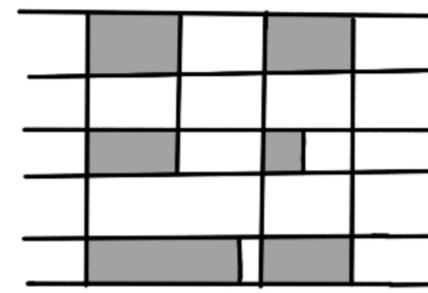
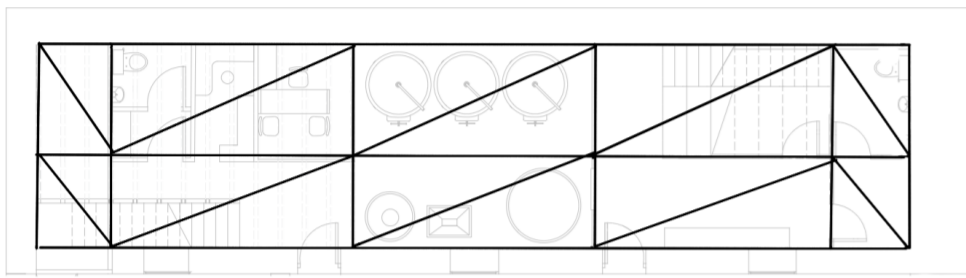
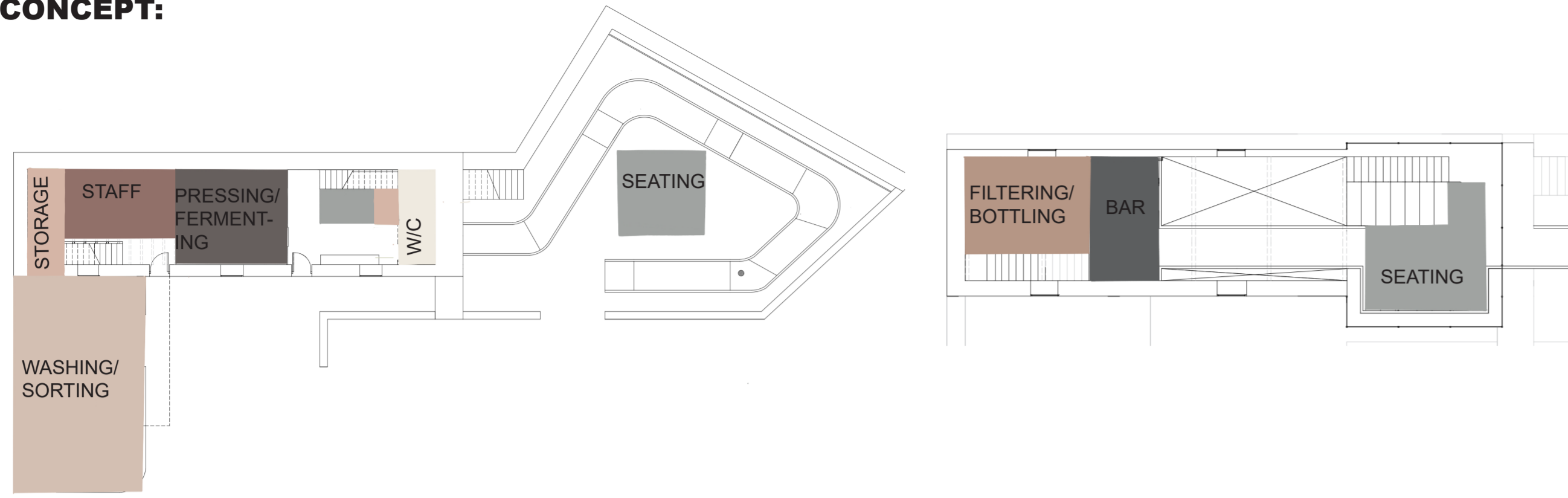
A Journey Through Production

SALMA SACA

Aydon Cider House transforms a historic stable block into an inclusive space celebrating local craft, heritage and community engagement. The proposal creates a shared step-free journey, with a continuous ramp, that enables all visitors, regardless of their mobility, to experience and understand the cider making process equally. The visual connections between public and production spaces enable learning, participation and interaction, strengthening the relationship between people and place. The project responds to the cultural significance of Aydon Castle, through the adaptive reuse of the existing building, and promotes accessibility, social inclusion and meaningful user experiences grounded in real-world needs.



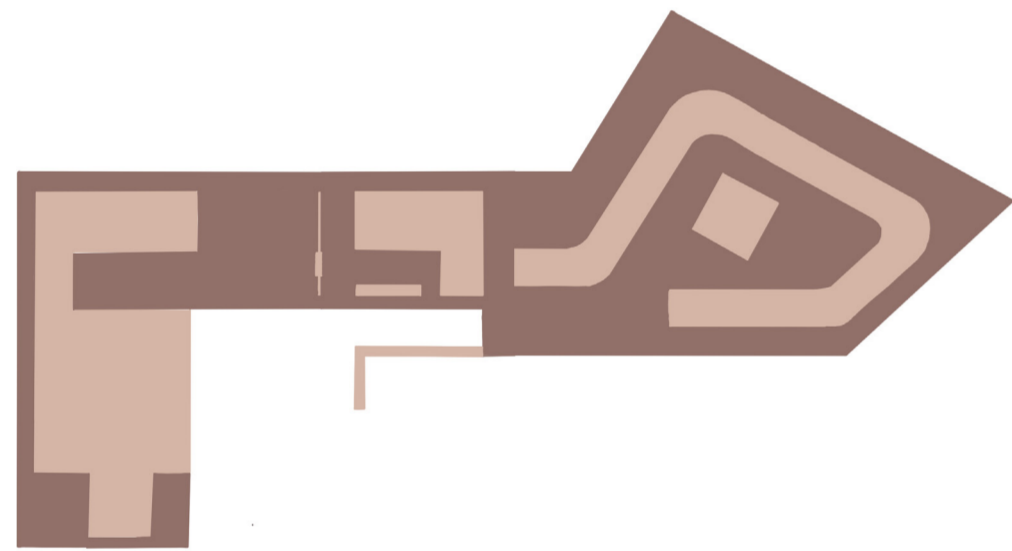
CONCEPT:



**WORKFLOW
GEOMETRY**



NEW INTERVENTIONS



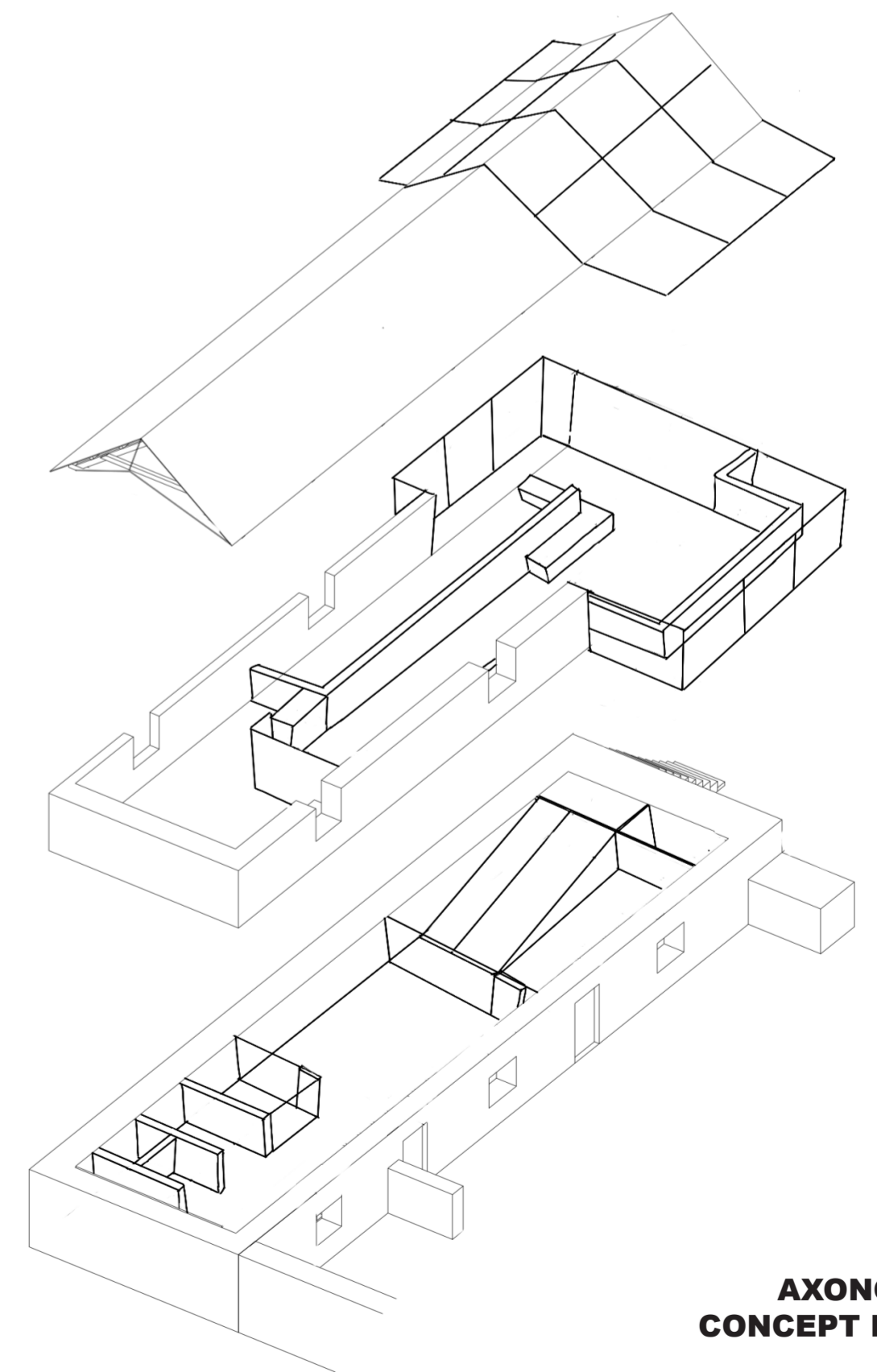
■ NEW VS ■ EXISTING



■ OPEN VS ■ CLOSED

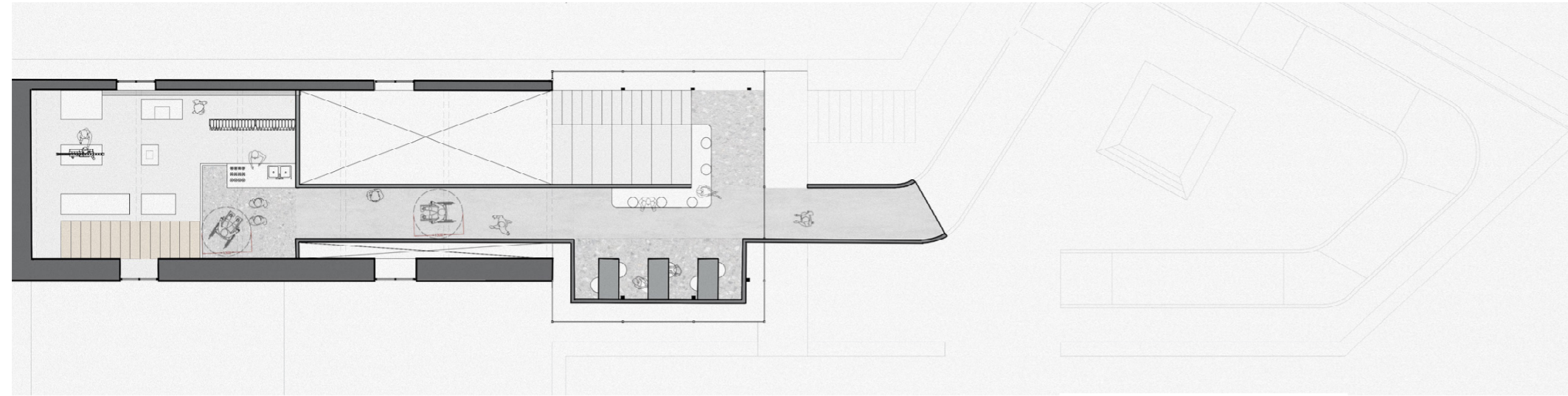


■ PUBLIC VS ■ PRIVATE

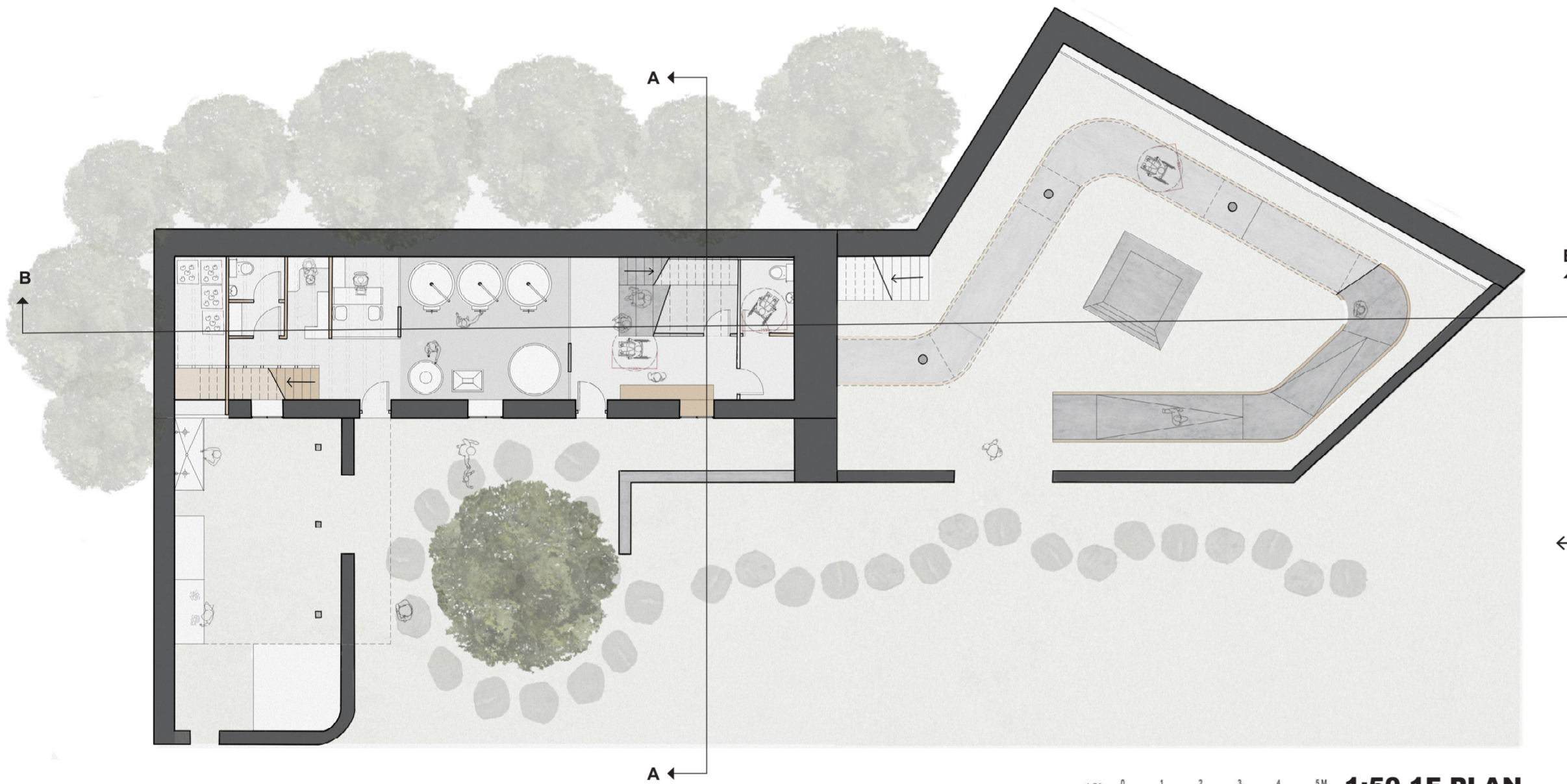


**AXONOMETRIC
CONCEPT DIAGRAM**

PLANS + SECTION:



1:50 0 1 2 3 4 5M **1:50 GF PLAN**



1:50 0 1 2 3 4 5M **1:50 1F PLAN**



1:50 0 1 2 3 4 5M **1:50 SECTION BB**

Ramp continues through building



Step free access to all visitor spaces



Movement becomes part of the experience

**SVERRE FEHN, HEDMARK MUSEUM, NORWAY
1967-2005 - PRECEDENT**

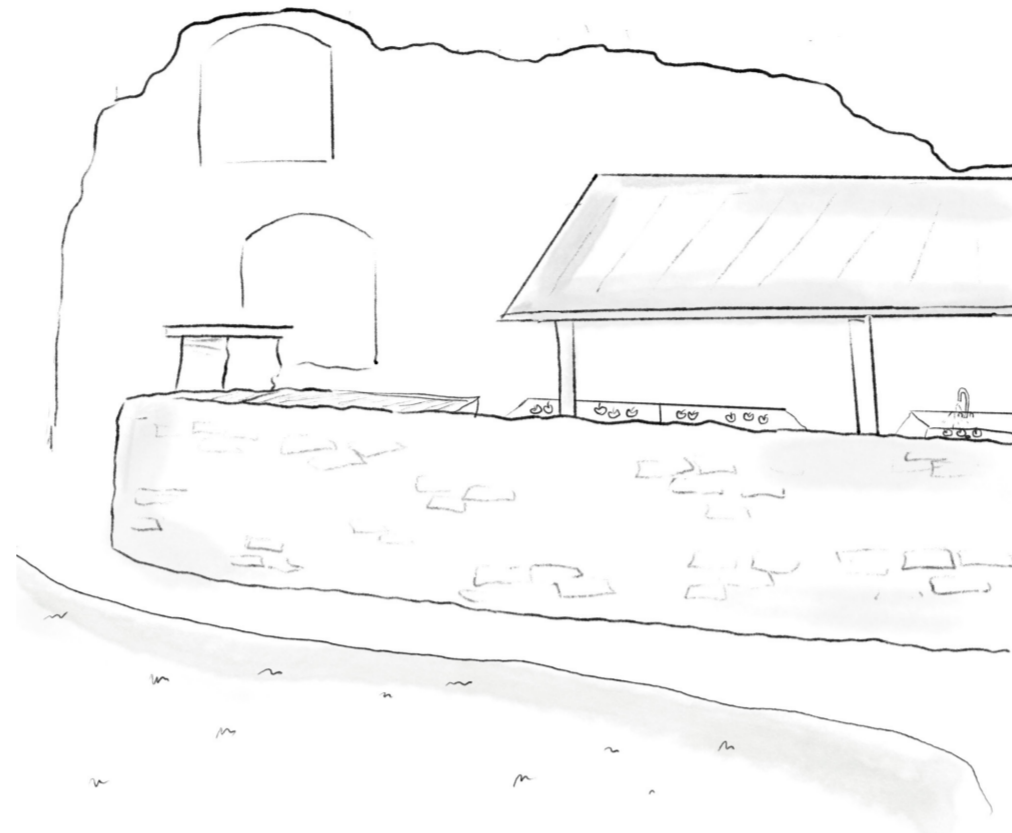
Fehn's idea of modern circulation inside historic fabric influenced the continuous ramp, using movement as a way to connect people to heritage, while providing an inclusive and accessible experience.



STORYBOARD/ ILLUSTRATIONS:



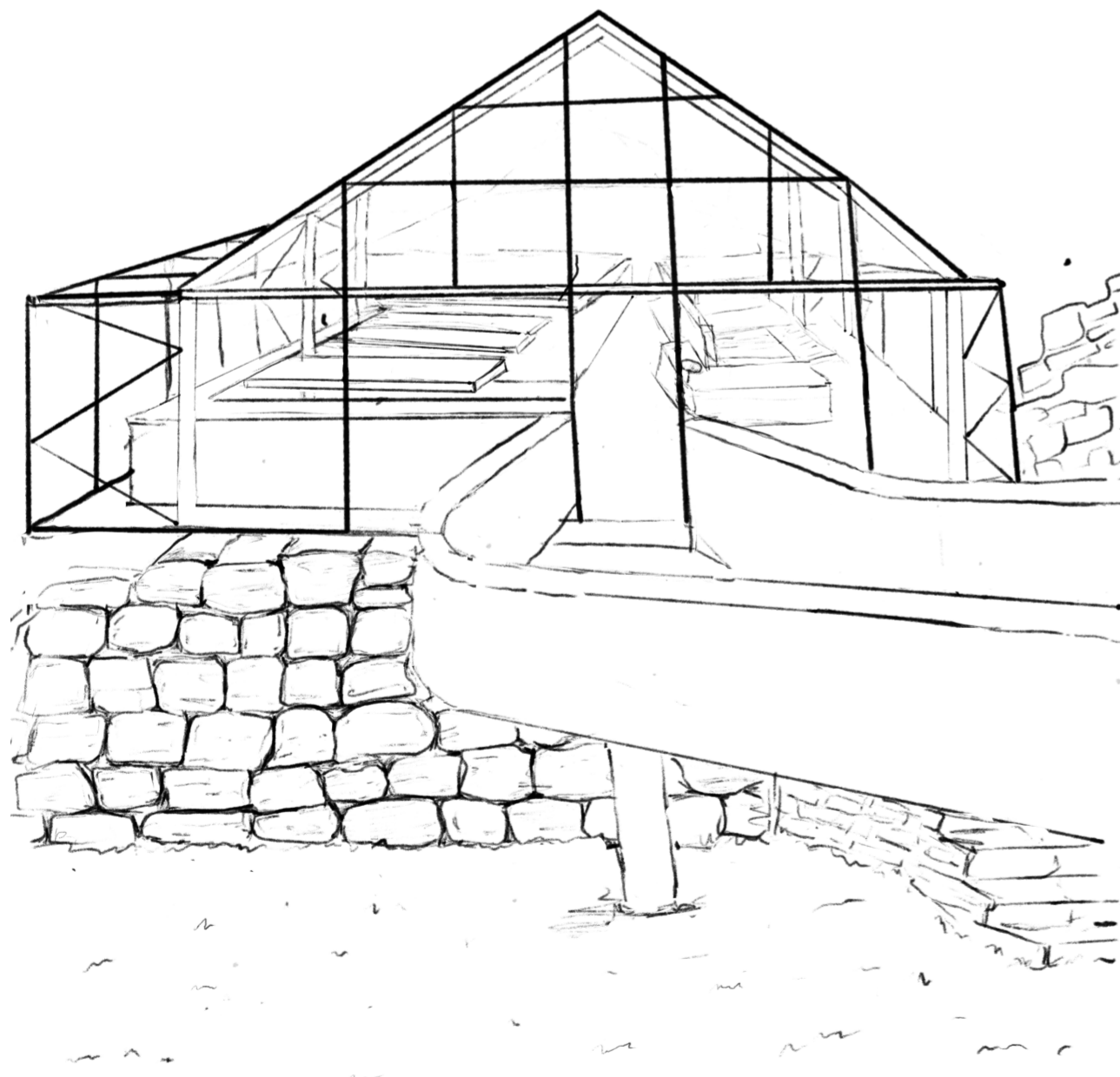
The journey starts where cider production begins.



Historic fabric frames the process of making cider while working with new elements.



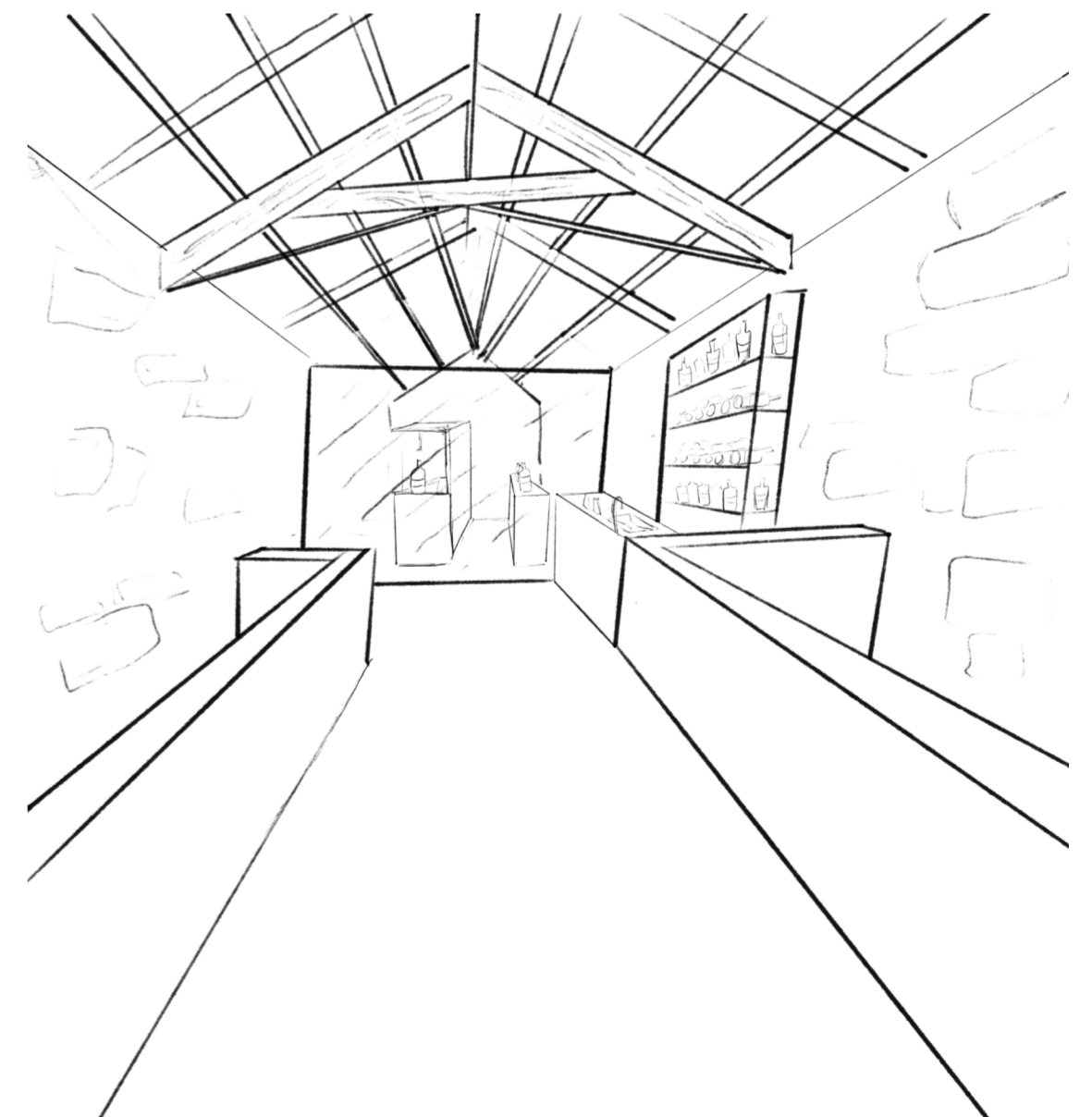
Visitors follow a shared journey through production creating a connection with the process and site.



The glazed intervention links heritage, landscape and activity while maintaining visual connections throughout.

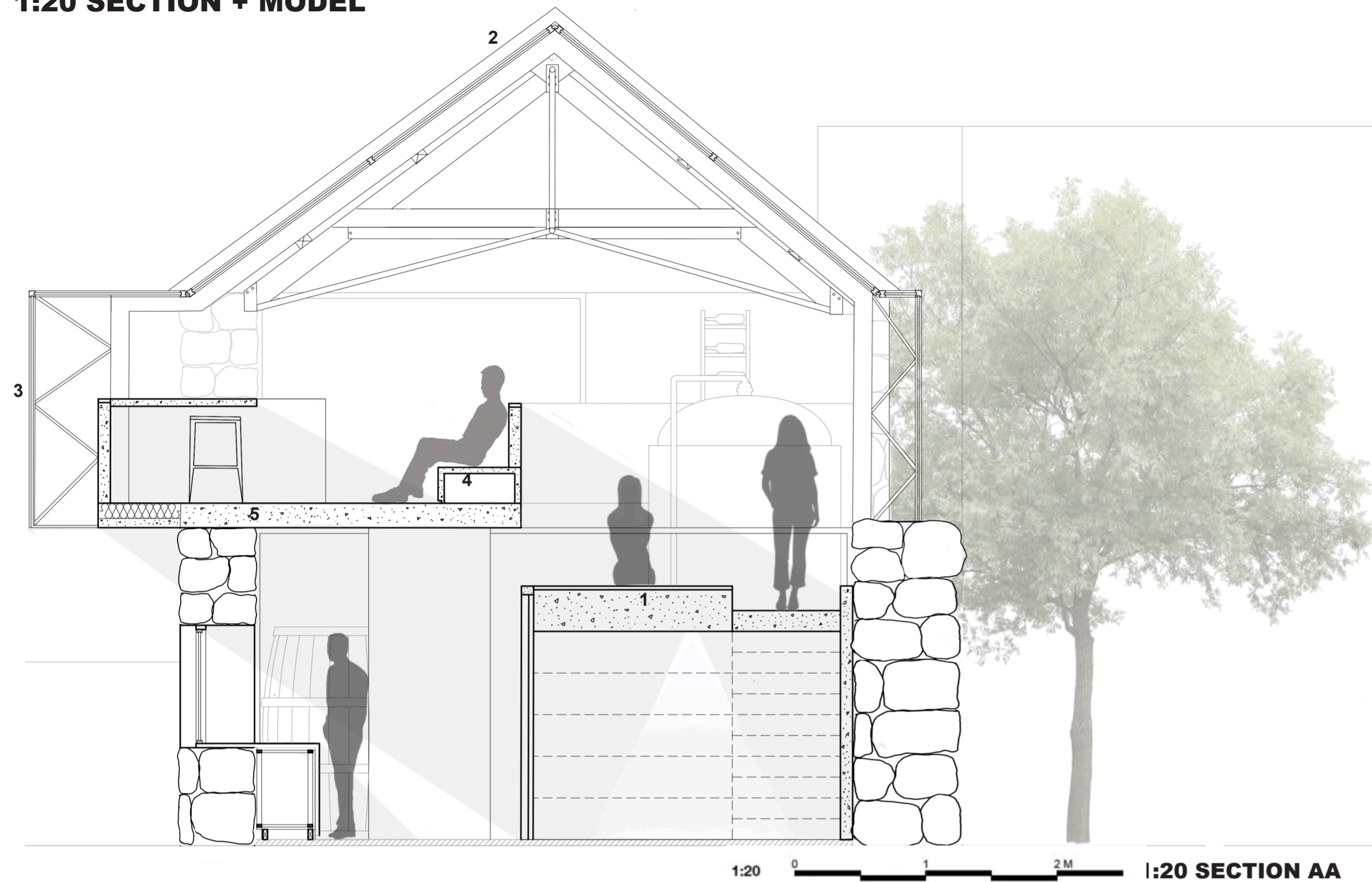


Dedicated staff circulation supports efficient workflows and comfortable working conditions.



The ramp guides visitors through each stage creating a step free transitional pathway.

1:20 SECTION + MODEL



1:20 SECTION MODEL

1- Stairs:

Casted-in-situ reinforced fair-faced concrete stairs, with natural and smooth surface finish, incorporating reclaimed timber planks salvaged from the existing building on site and reused as stair treads.

2- Glazed roof:

Glazed roof system, including extruded aluminum mullions and tempered double-glazing infill panels, accommodating all necessary thermal breaks, weather sealants, and fixing arrangements.

3- Glazed façade:

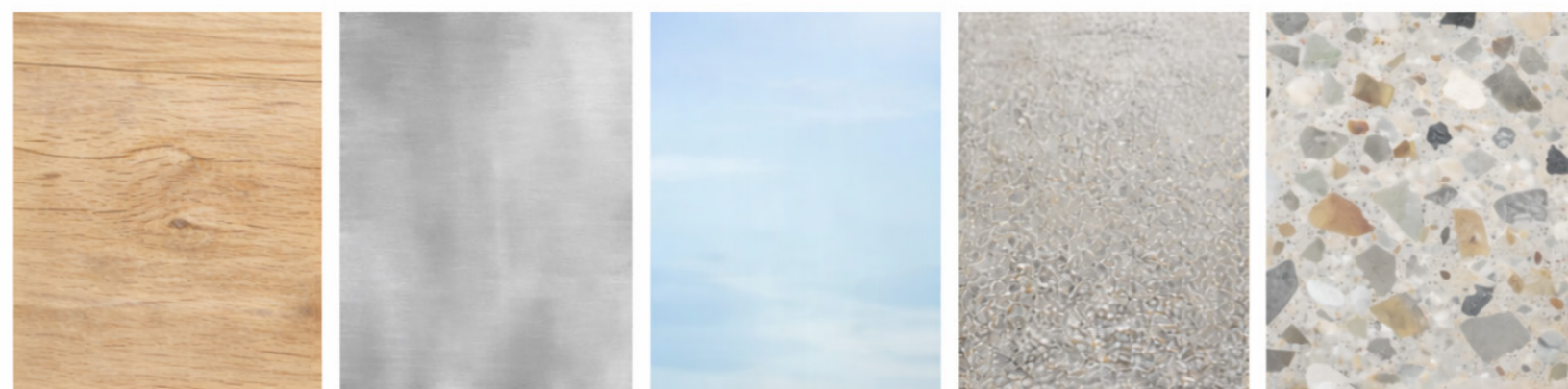
Wall façade system with structural aluminum trusses and tempered double-glazed units, accommodating all necessary thermal breaks, weather sealants, and fixing arrangements.

4- Bench:

Casted-in-situ reinforced fair-faced concrete bench, with natural and smooth surface finish.

5- Slab:

Reinforced concrete slab (200 mm thick), finished with a terrazzo topping incorporating recycled aggregate derived from the existing building on site, with a smooth and sealed surface finish.



RECYCLED WOOD STEEL GLASS CONCRETE TERRAZZO

MATERIALITY:

Concrete acts as a threshold between the historic stone fabric and the timber-lined interior creating a transitional feel. Terrazzo includes recycled material from the existing building that was taken out, carrying the historic traces into the new intervention.



INTERIOR MODEL MOMENTS showing the transitional ramp walk-way and the concrete stepped seating viewing the cider-making process through glass that creates a boundry while maintaining openness.