

# THE SOCIAL STITCH

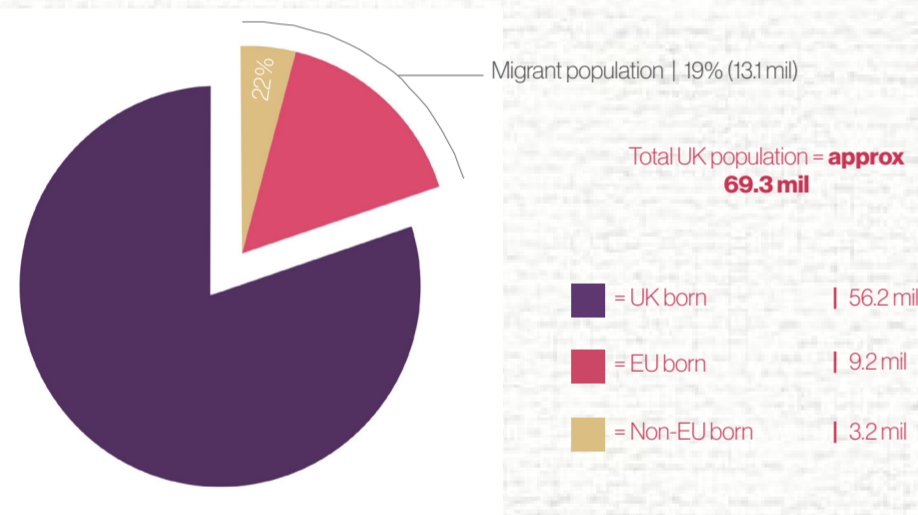
The Social Stitch is a project that inhabits Grade II Listed, brutalist building MEA House. Influenced by settler vs migrant conflict within close to proximity to the site - MEA House, the project addresses repair through physical mending (weaving workshops) but also socially (by promoting conversations between different nationalities within Newcastle). Spatial strategies are defined by 'stitching' adjacent spaces to create areas of natural connection for social interaction and methodical circulation.

In 2020, of all (specifically Non-EU) foreign-born migrants aged 16+ in the UK:

- **18%** reported **feeling unsafe**
- **13%** reported **being insulted**
- **12%** reported **avoiding places**
- **1%** reported being **physically attacked**

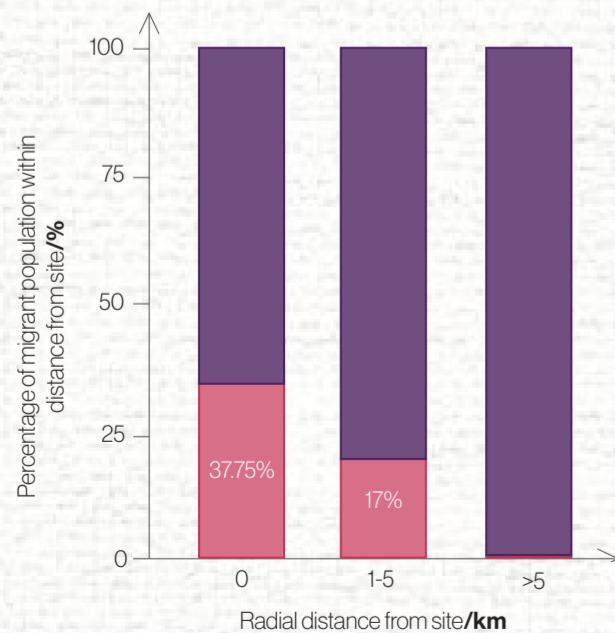
Data sourced from The Migration Observatory of the University of Oxford

## Net migrant population within UK



Data sourced from Office for National Statistics (ONS) courtesy of Census 2021.

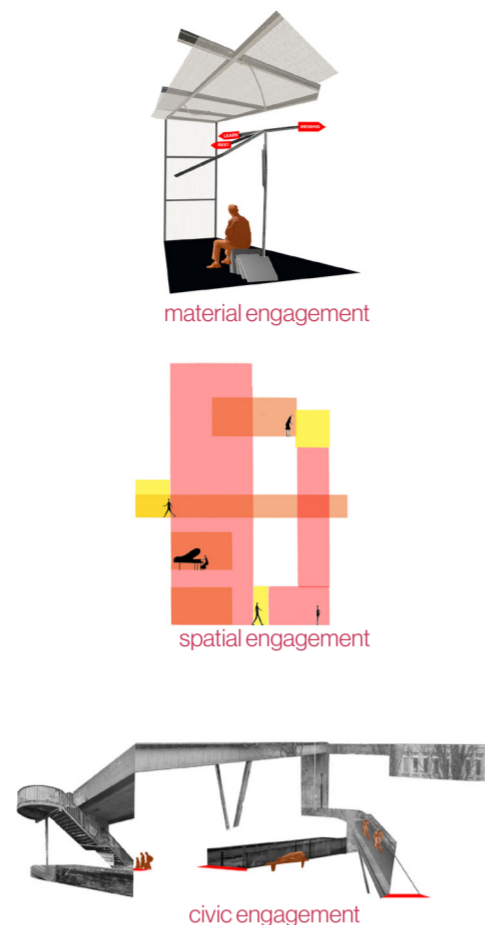
## Bar chart of population of non-UK born migrants living in relation to the site



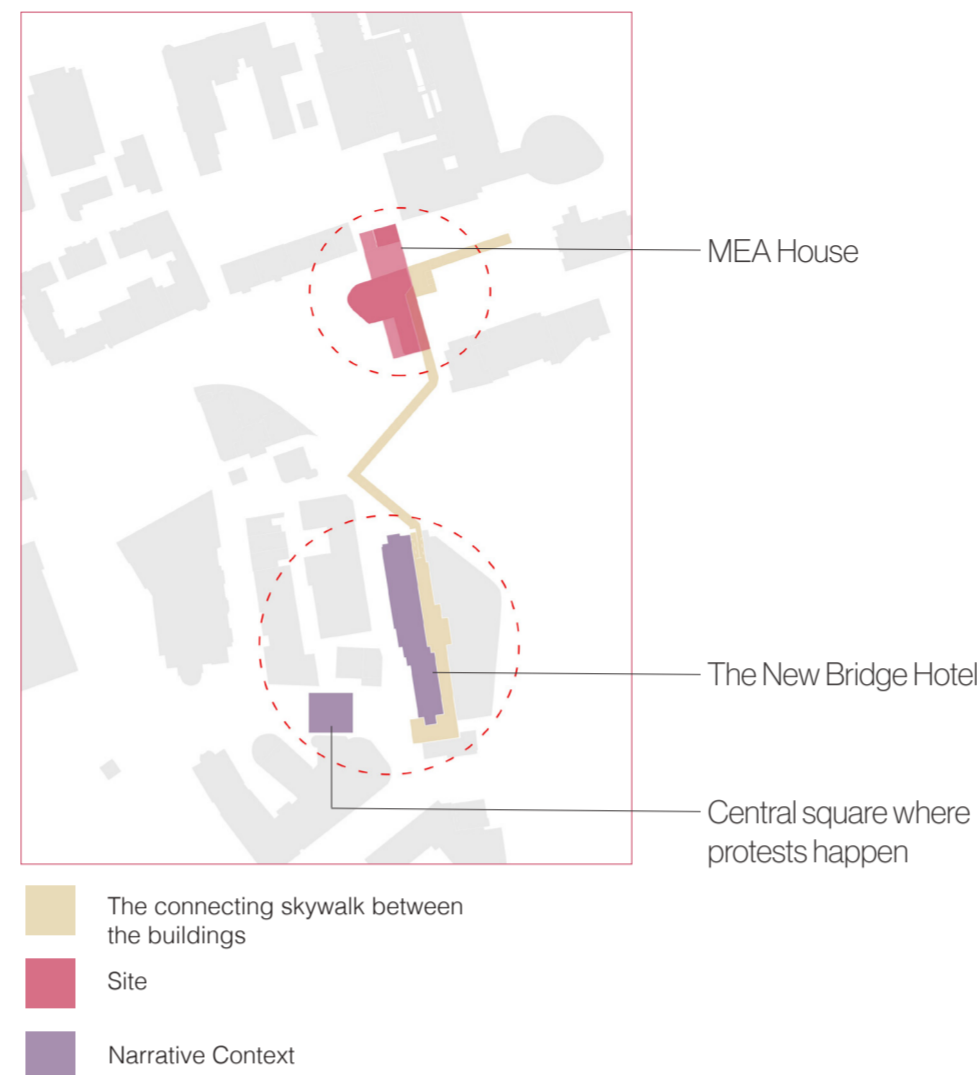
Data gathered from Society Consensus 2021.



## BRIEF INVESTIGATIONS



## NARRATIVE

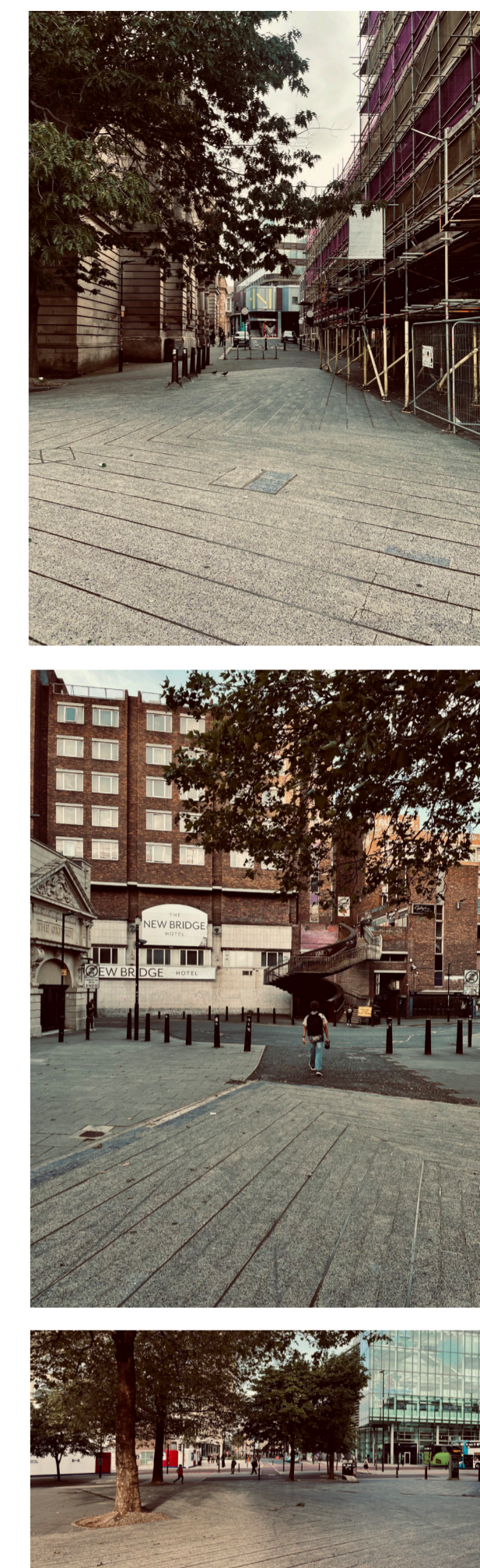


## Protest photos



Since July/August 2025, weekly protests have happened outside the central square, directly opposite the hotel that houses asylum seekers; they occur every Saturday from 11am-2pm. Far Right groups e.g. EDL, Reform etc oppose protestors against discrimination of refugees, the Palestinian war etc.

## Central square photos

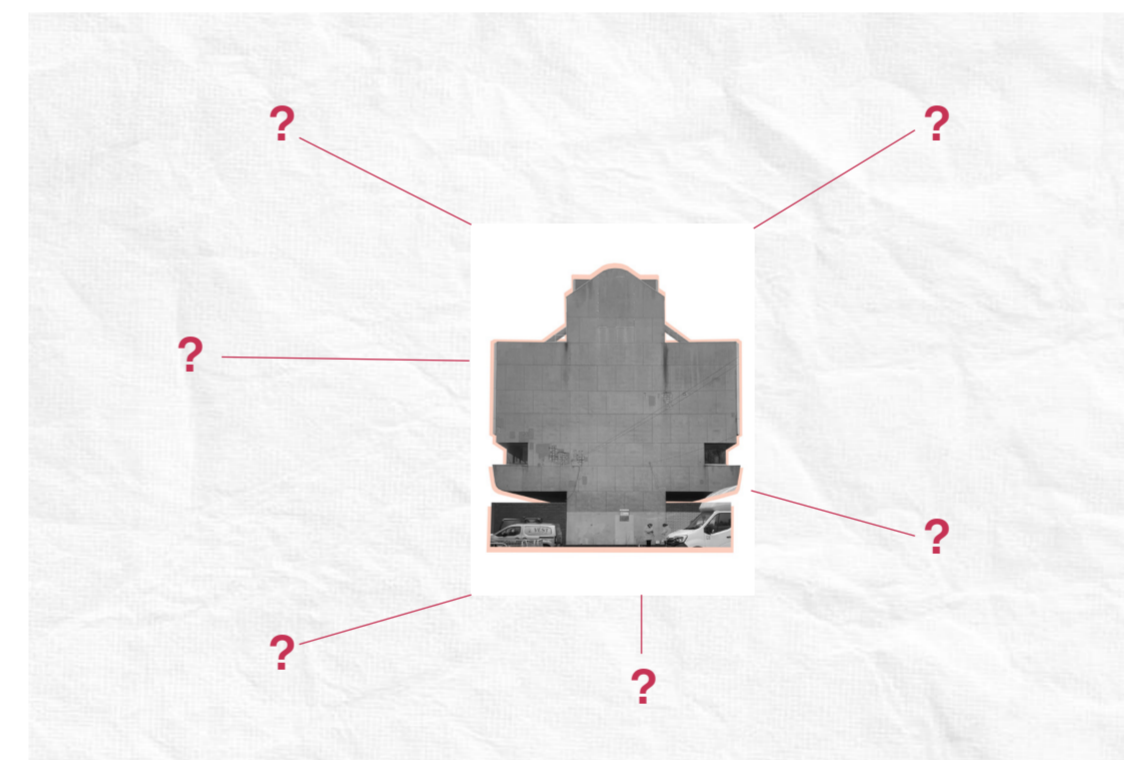


Migration has been a grey area within the UK, especially in the past couple of years. With the increase of social divide, injustice has reached a peak within the UK, leading people to become fed up. Events like BLM, pro-Palestine, Far right counter rallies etc. demonstrate this.

## Community demographics in close proximity to the site:

- Migrants/Asylum seekers
- Students (via accommodation and university)
- Business owners
- Homeless
- General public

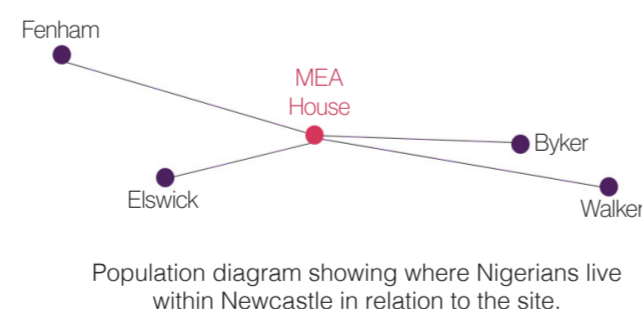
To honour the act of mending - roles are reversed; refugees become the teachers, and settled people become learners.



## STORYTELLING - From site to spatial strategy

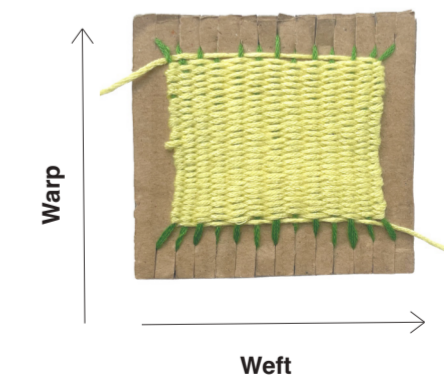
The top 3 Black 'settled' /black migrant nationalities within Newcastle:

1. **Nigerian**
2. **Somali**
3. **Ghanian**



A Nigerian mother with her son, wearing her wedding 'Aso Oke'.

The *anatomy of a textile fabric.*

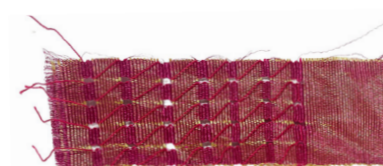


**Warp (vertical)** and **weft (horizontal)** are the basic components used in weaving.

The warp and weft influence spatial

## Aso-Oke Samples

[ah-SHOW-kay]  
- translating to "top cloth" or "cloth of high status"  
- originating from Yorubaland in Nigeria  
- typically worn for celebrations e.g. Weddings, coronations etc.



#c63254  
#d6b774



#5f0119  
#d6b774

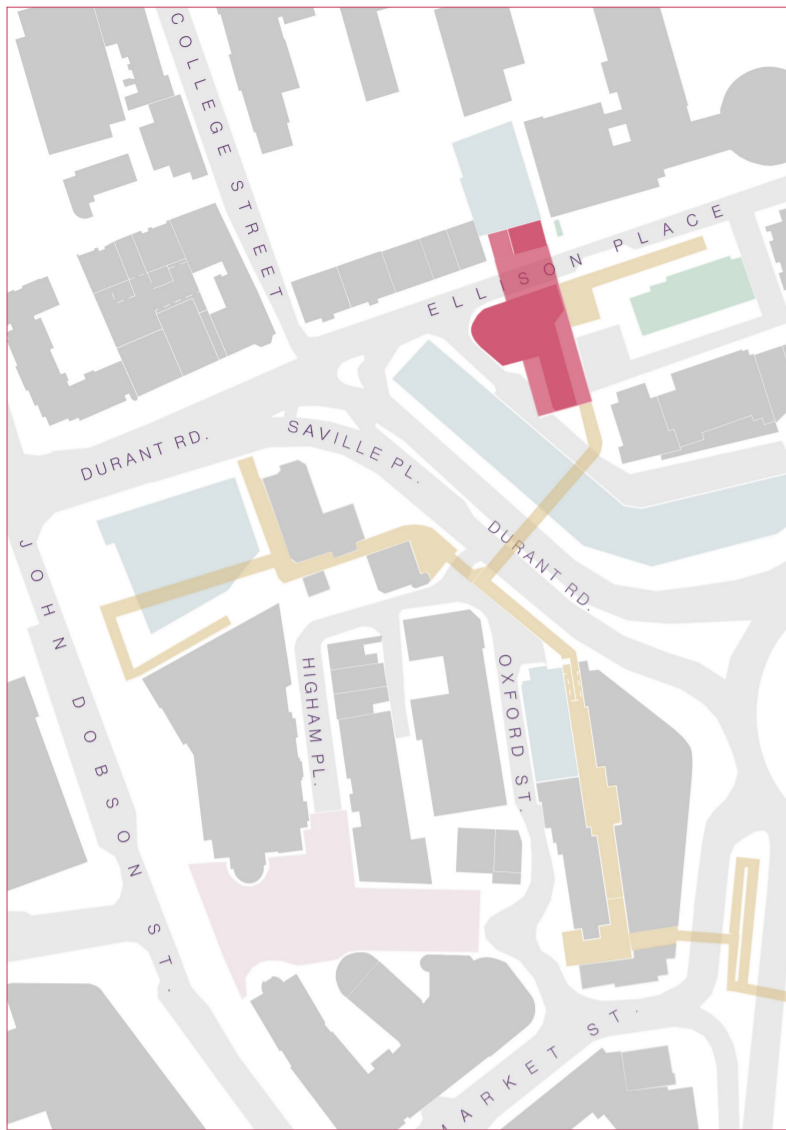


#21033f  
#4d2160



#308450  
#253e20  
#08404f

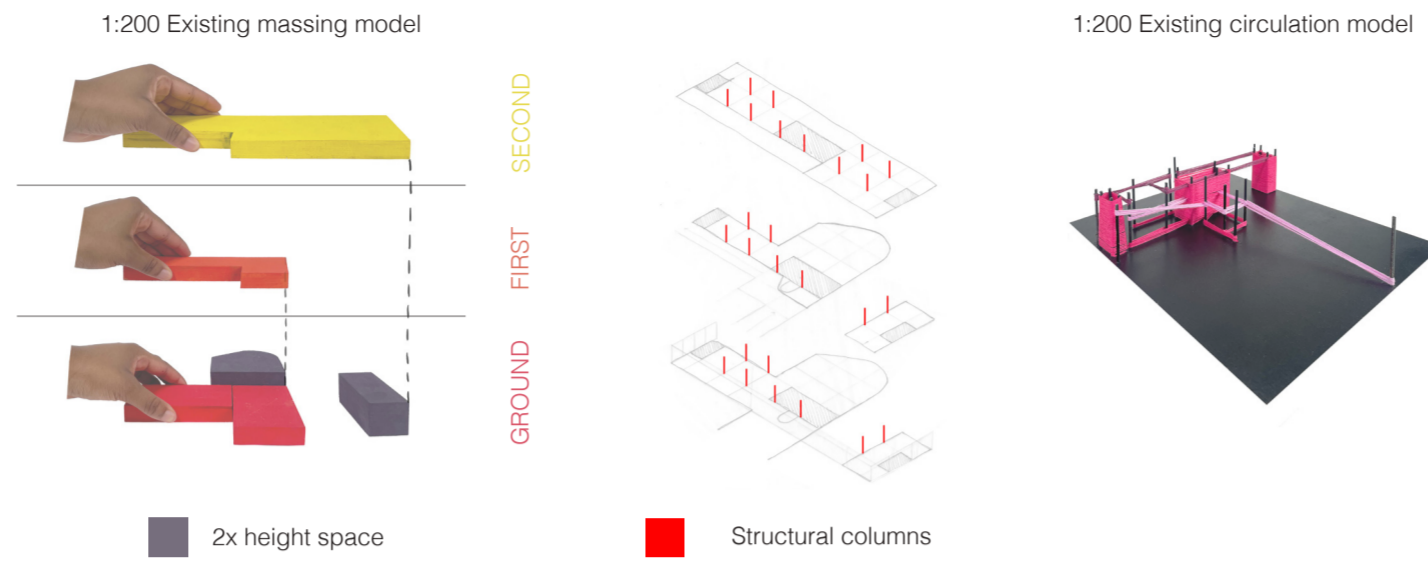
**1:1500 SITE PLAN**



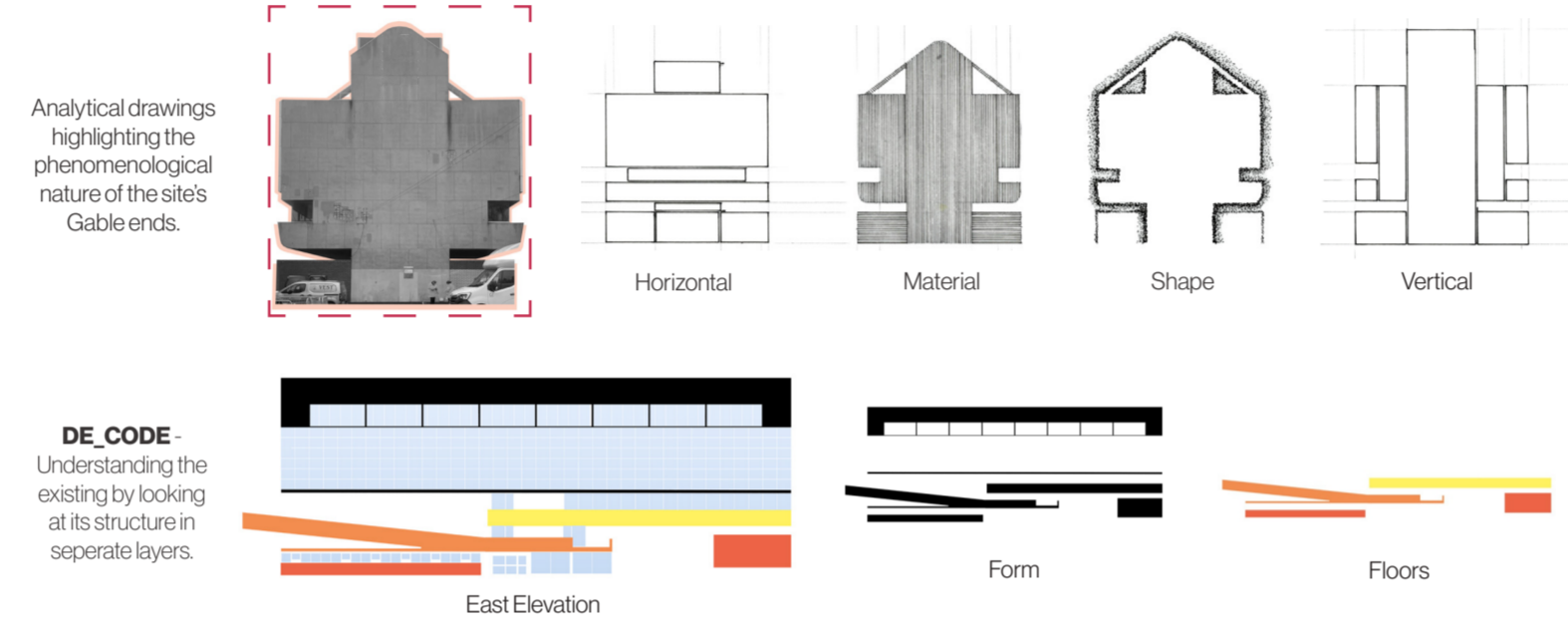
- Raised pedestrian walkways
- Site
- Main roads
- Car Parks
- Surrounding buildings
- Green space
- Open space

MEA served as a community building. It's ideal location makes it easily accessible to everyone, ranging from university students, to residents.

**ADAPTIVE POTENTIAL**



**SITE PHENOMENON**



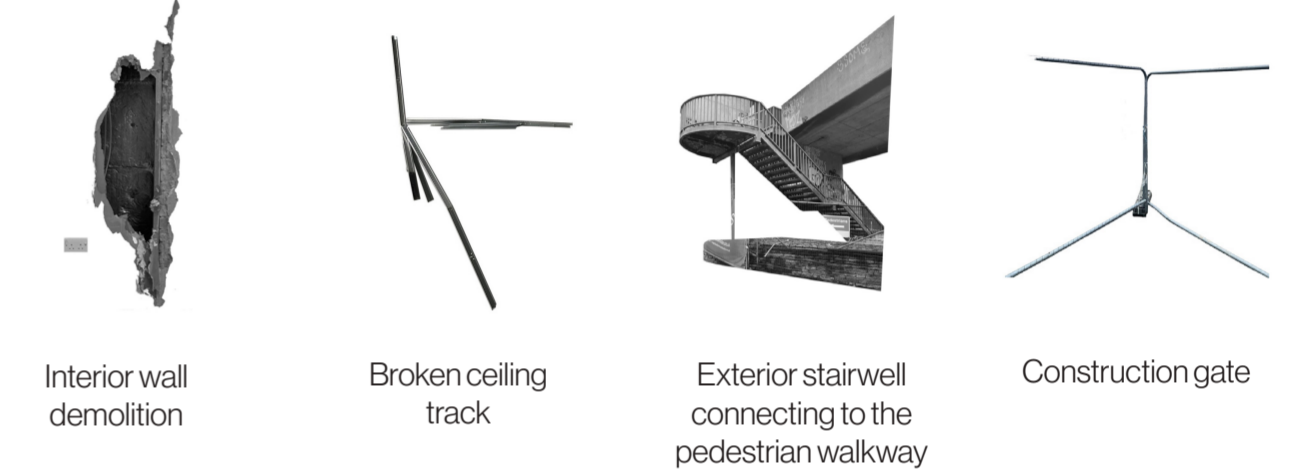
**SITE OBSERVATIONS**

Exterior observations



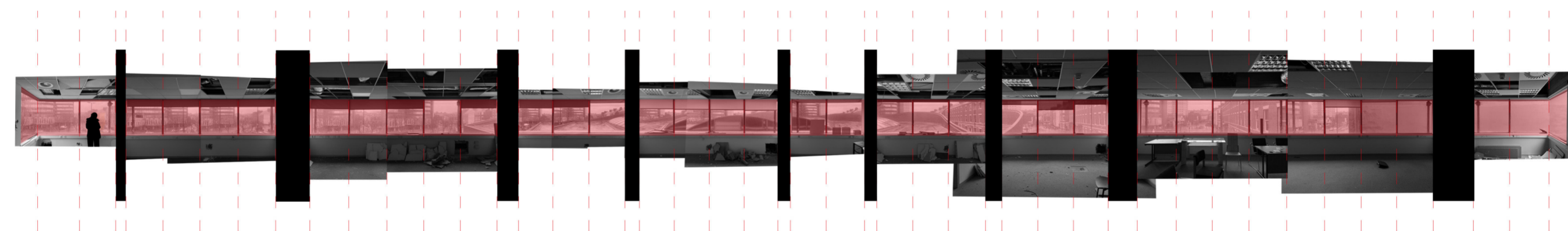
Benches beside pedestrian walkway | MEA House from College Street | Restricted access to walkway

Interior observations



Interior wall demolition | Broken ceiling track | Exterior stairwell connecting to the pedestrian walkway | Construction gate

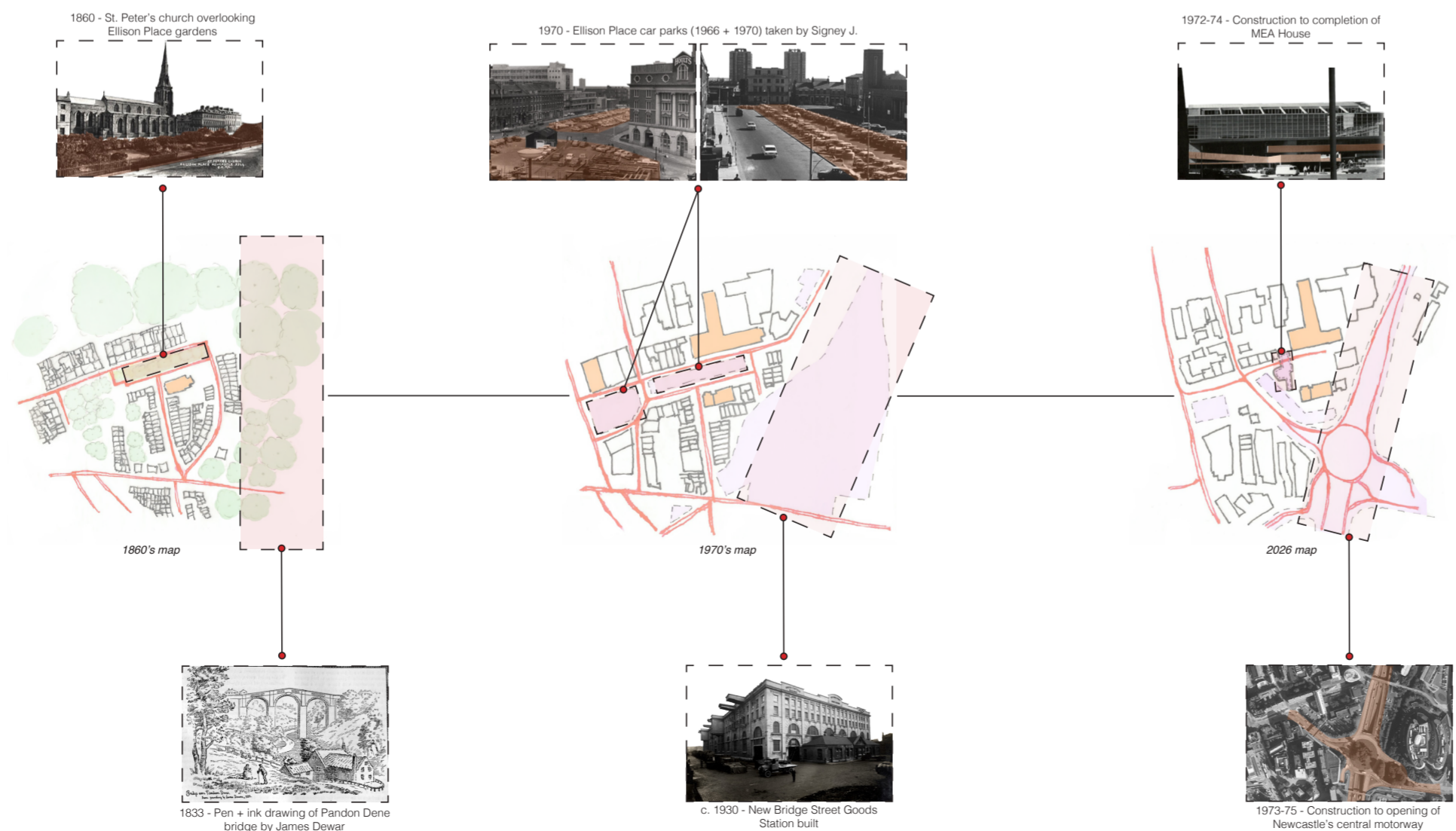
**FRAMING THE LANDSCAPE** - Interior landscape serial vision overlooking the external of the glass ribbon window.



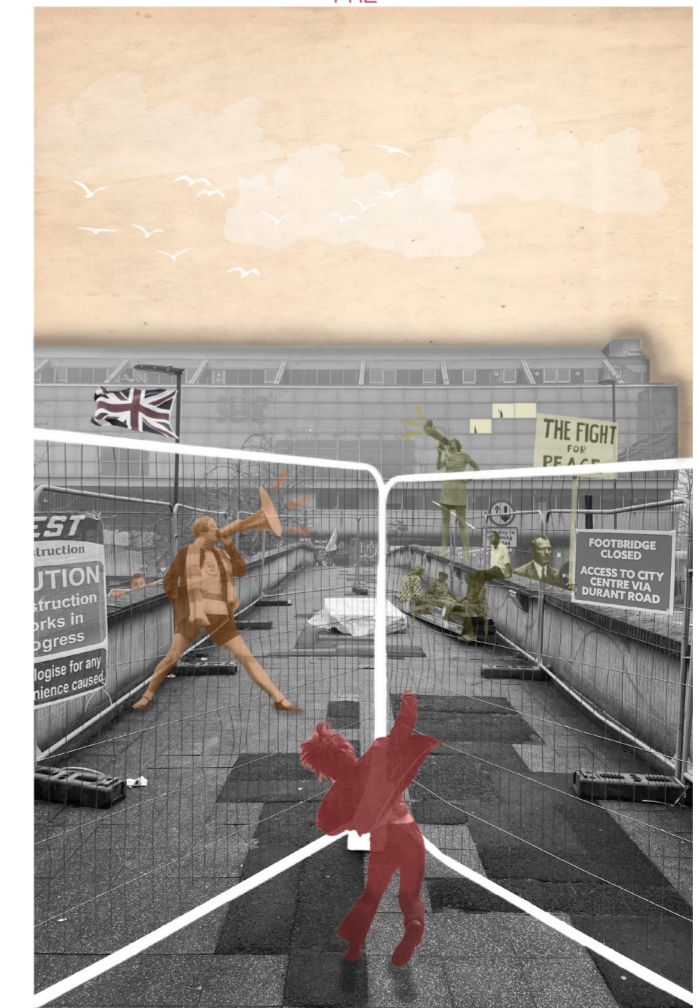
**SITE HISTORY**

A timeline documenting the typological changes of Ellison Place from the 1860's to present day. Significant changes/ patterns are:

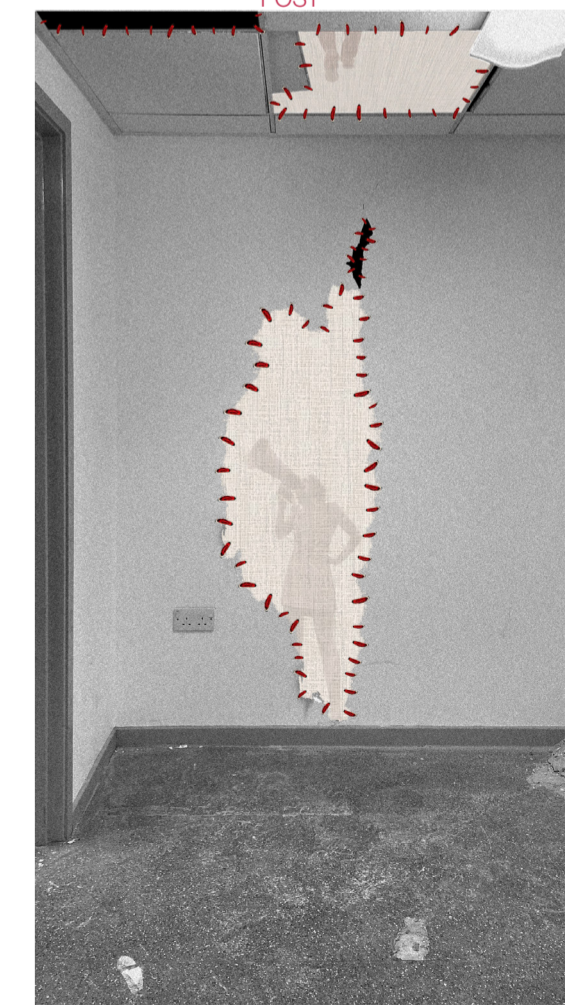
- Road/vehicular access
  - Green spaces
  - Function of buildings (from single unit e.g. housing to community initiatives e.g. schools, offices etc.)
- The reason behind this was due to the re-development of Newcastle.



PRE

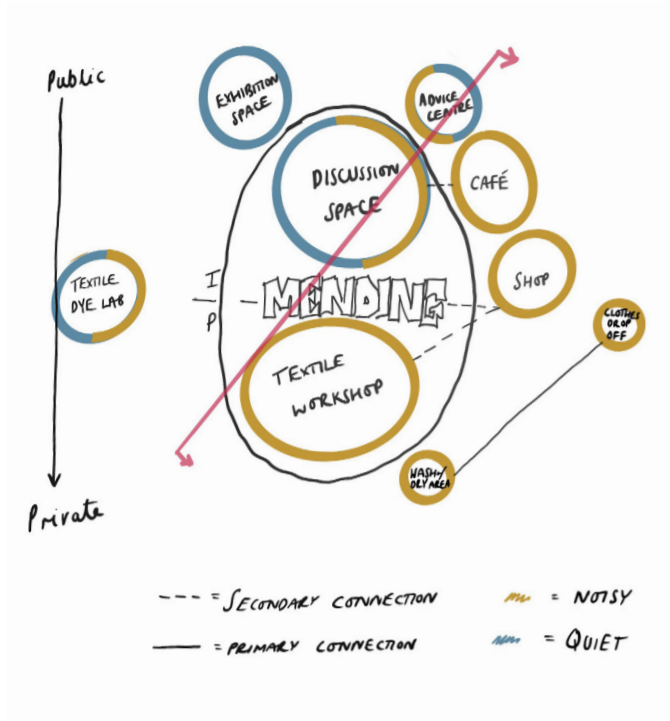


POST

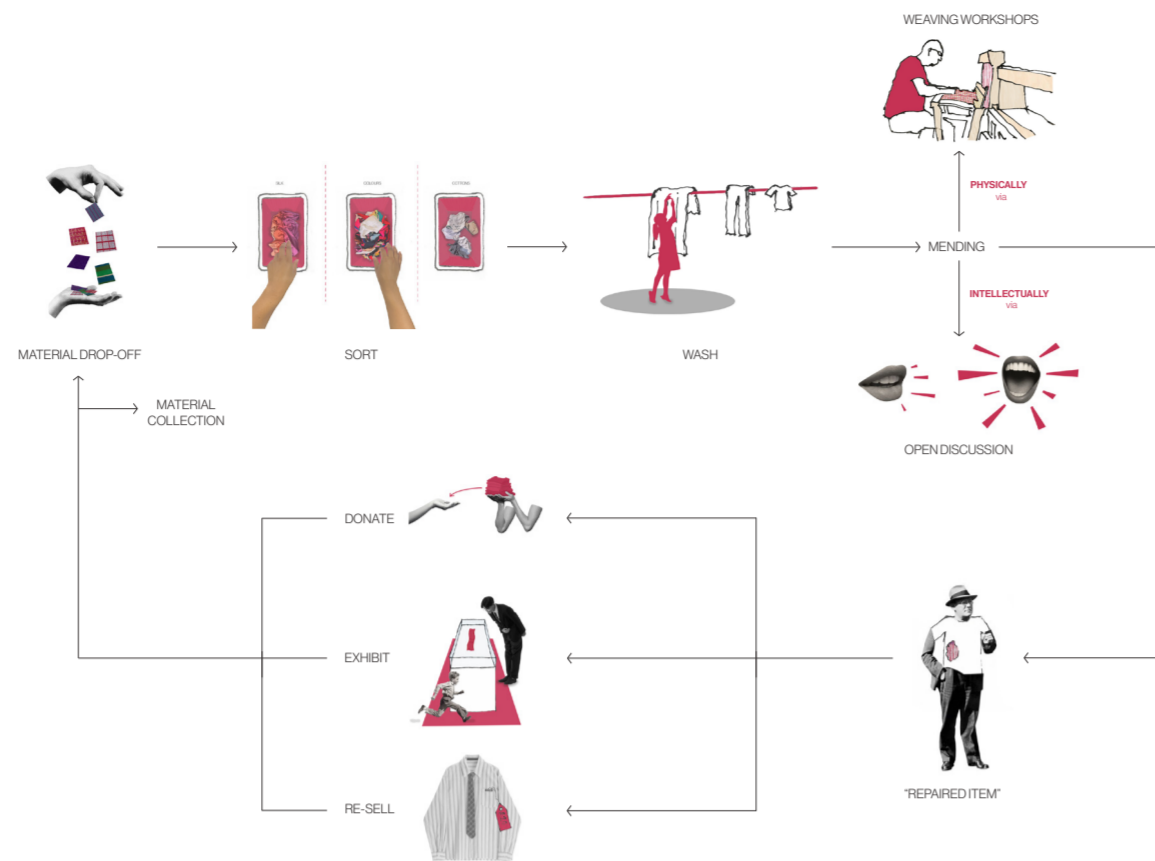


Narrative Collages - Pre vs Post 'mending' that occurs in MEA House

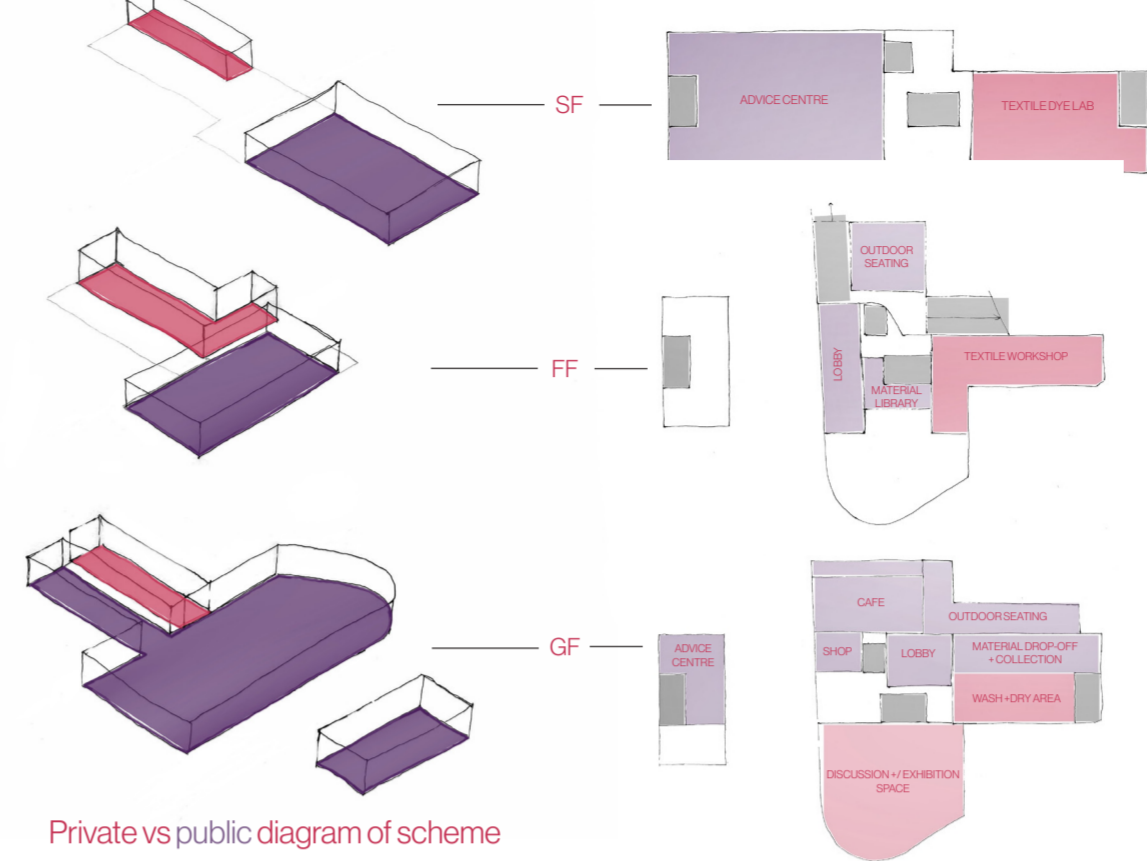
ADJACENCY



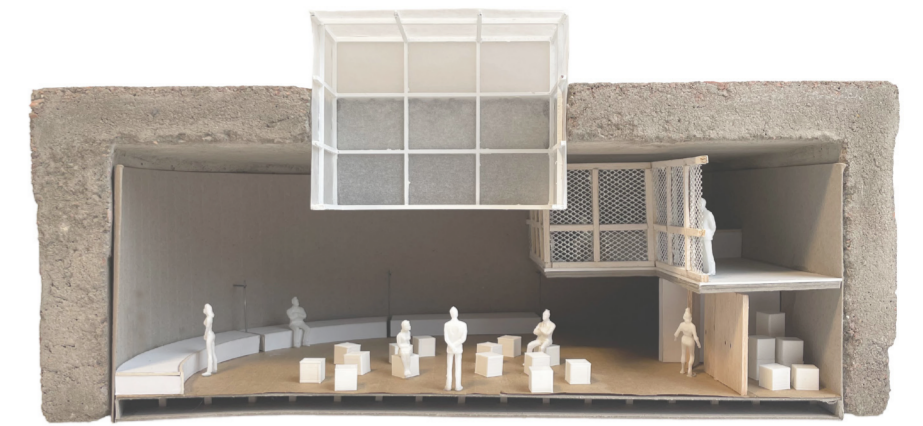
FUNCTIONAL ANALYSIS



ZONING

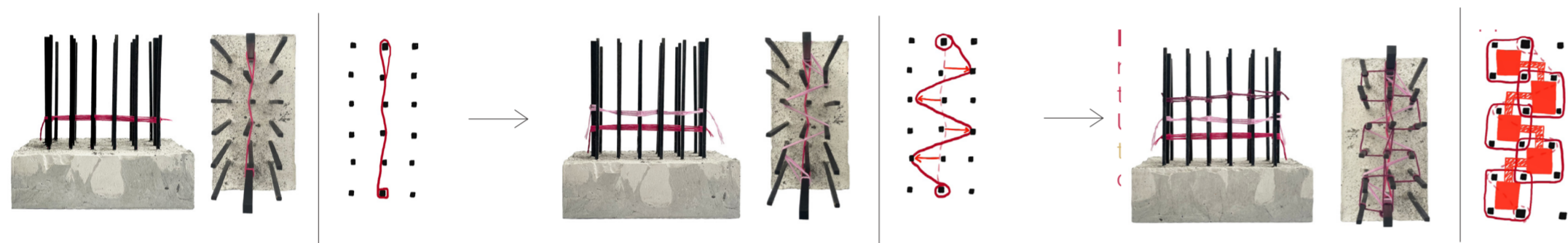


1:50 INTERVENTION WITHIN EXISTING MODEL



SPATIAL AMBITION

Progressive models showing the creation of spaces, influenced by the 'weft and warp' method of weaving.

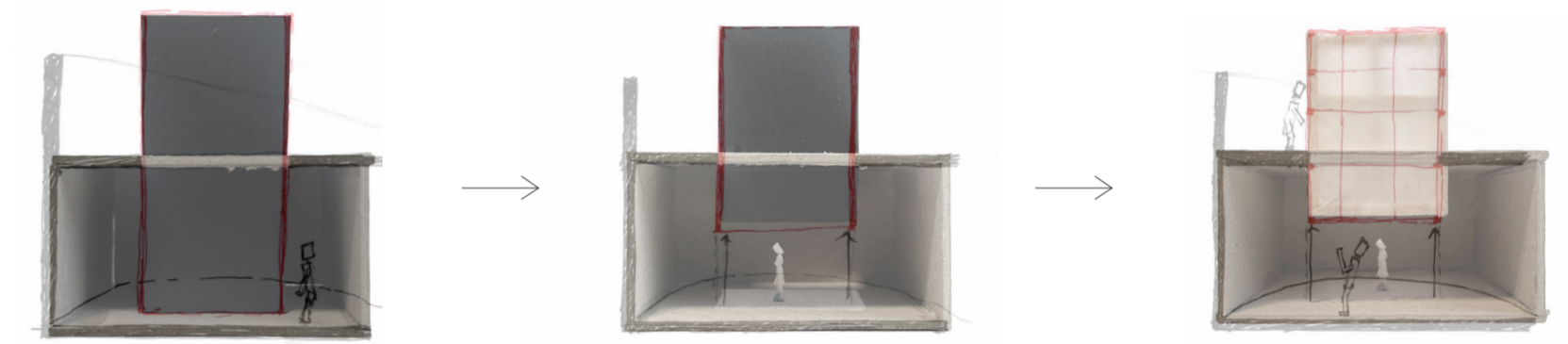


1. The weaving of the thread via 'weft and warp' method between vertical looms.

2. The establishment of wider spaces by the pulling away of the thread from loom.

3. Development of interspatial relationships via a clear flow of circulation to create areas of social interaction aka 'social stitching'.

Iterative models



1. Full floor to ceiling insertion that porturdes out of skylight.

2. Influence of pilotis by raising the volume to free up more space and allow a flow of people.

3. Change in opacity of volume, gently illuminates interior. Offering a semi-public relationship between the interior and exterior.



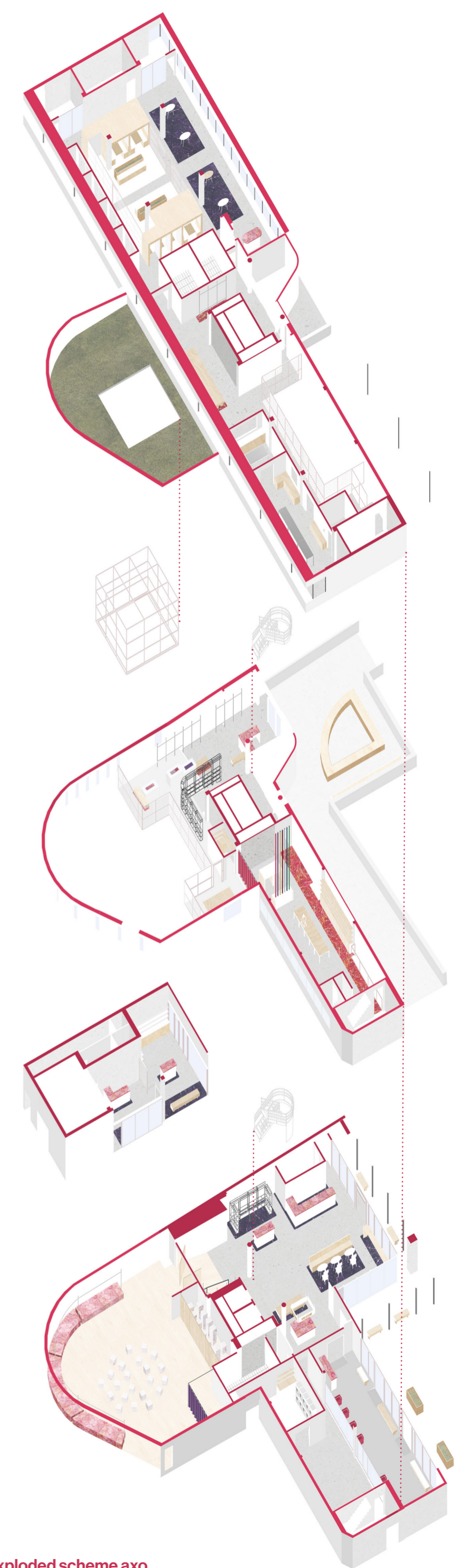
SHORT SECTION: A-A



FF Plan



SF Plan



Exploded scheme axo

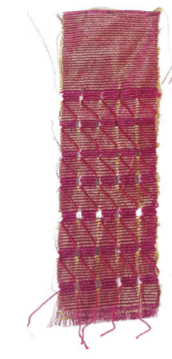
# Re\_CYCLE

To promote sustainability, Aso-Oke off-cuts have been reused to create a diverse collection of finishes. This circular approach not only ensures that materials are sourced and produced locally, but also that MEA's ethos of community is met.

## Benefits of changing the form of textile waste?

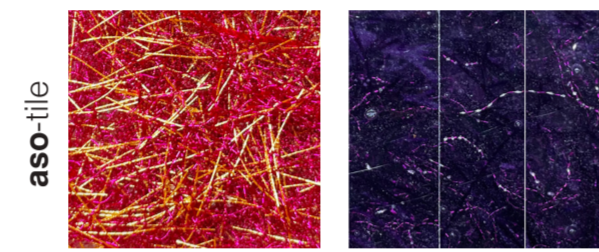
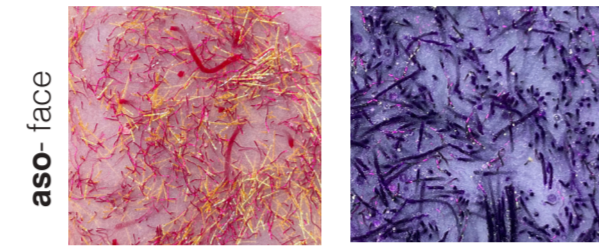
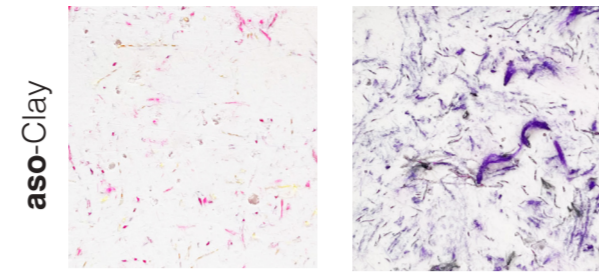
- Altering the molecular property of the fabric fibres to make them more rigid.
- Provides a more diverse range of finishes
- Much more environmentally friendly

ORIGINAL FORM



## MATERIALS

MATERIAL



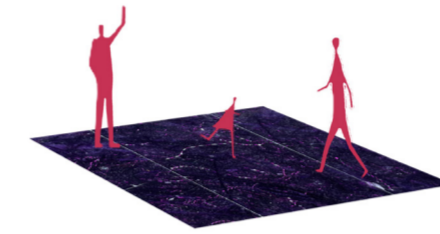
USES



as furniture/for display



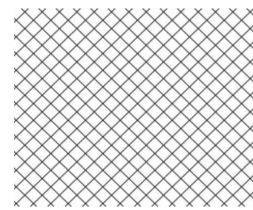
as a worktop



as floor tile

Diagram showing how Aso Oke samples can be reused to produce new products for humans.

1:20 DETAIL AXO



Steel Mesh

VOIDS



Frosted Glass

SEMI-PUBLIC

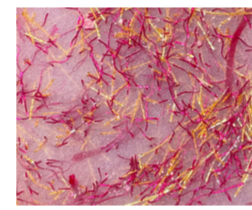


Plywood

SIT

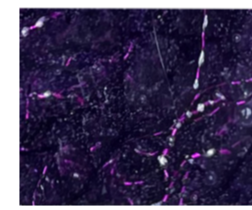
Stainless Steel

DISPLAY



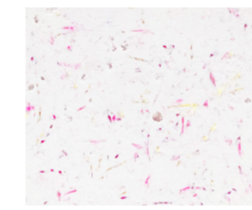
aso-face

WORKTOP



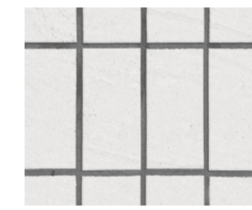
aso-tile

FLOOR TILE



aso-Clay

EXHIBIT



White tile

WASH

Scheme language meaning



Perspective 2 - Physical mending within the Textile workshop



Perspective 3 - The lobby of the FF

