



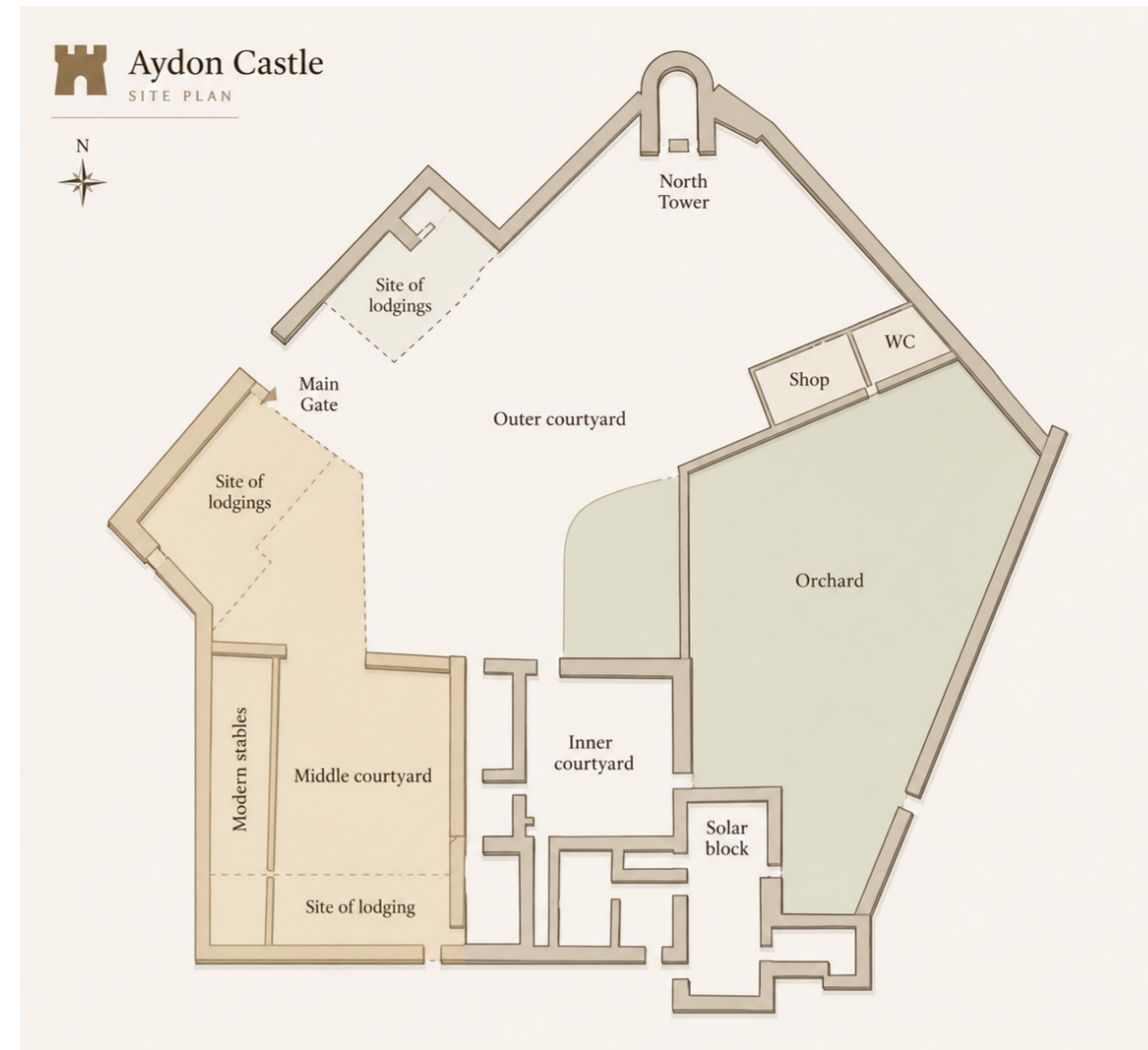
AYDON CASTLE CIDER HOUSE

The design of Aydon Castle Cider House redefines the former stable as a modern cider-making location, with an analogue craft approach and digital representation. The project was developed through an iterative process of sketching, making physical models, hand-drawing technical drawings, and post production, all of which focus on innovative strategies for adaptive re-use in an historic context. A new timber and glass extension creates a dialogue between old and new whilst existing timber features are re-used within the roof structure. The use of experimental design methods is highlighted, as a technique for developing meaningful architectural interventions that harmonize with the character of heritage, while focusing on spatial sequencing, material expression and visitor experience.

SITE CONTEXT

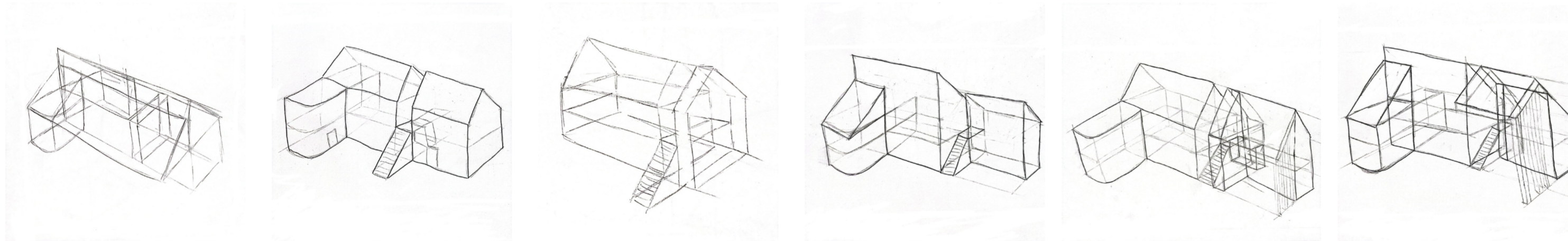


Aydon Castle is a medieval fortified manor house in the rural landscape overlooking the valley of the River Tyne near Corbridge in Northumberland and is a Grade I listed building. The site is sited within Aydon Road and is linked to nearby transport networks but is still felt to be very isolated and historic. The castle is set in a larger cultural and environmental context, bordered by woodland and agricultural fields and open countryside. The old stable, which is in a second place in the castle park, is an opportunity for adaptive reuse. The project takes account of the site's heritage, landscape, views and visitor experience.



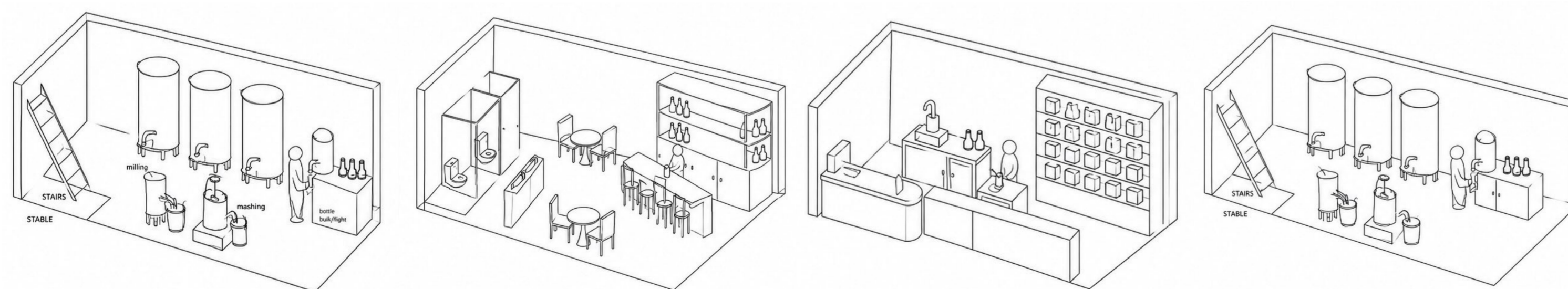
The project is based on the east side of Aydon Castle, as indicated within the site plan, where the former stable range is shown. The building stands next to the central courtyard, surrounded by the old stone walls of the castle, and is an important but unused area of the complex. It is situated in such a way that it makes it easy to see a connection between the main entrance and other courtyards and the route the visitor takes to the site. The proposal will include a cider house for the new public and production spaces, restoring the character of the historic fabric, whilst transforming the existing stable. The intervention enhances the visitor experiences with the castle and its heritage.

INITIAL DESIGN EXPLORATION



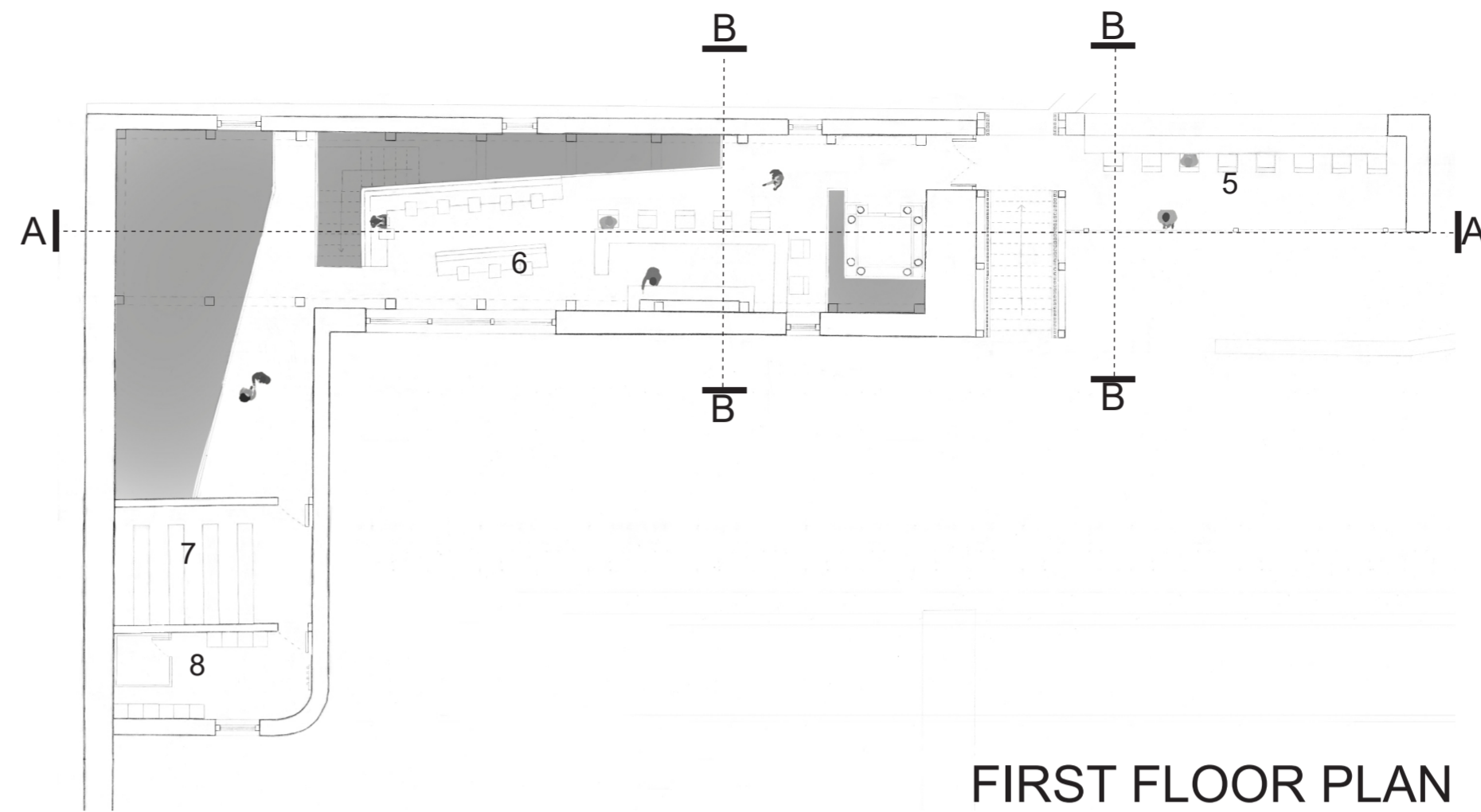
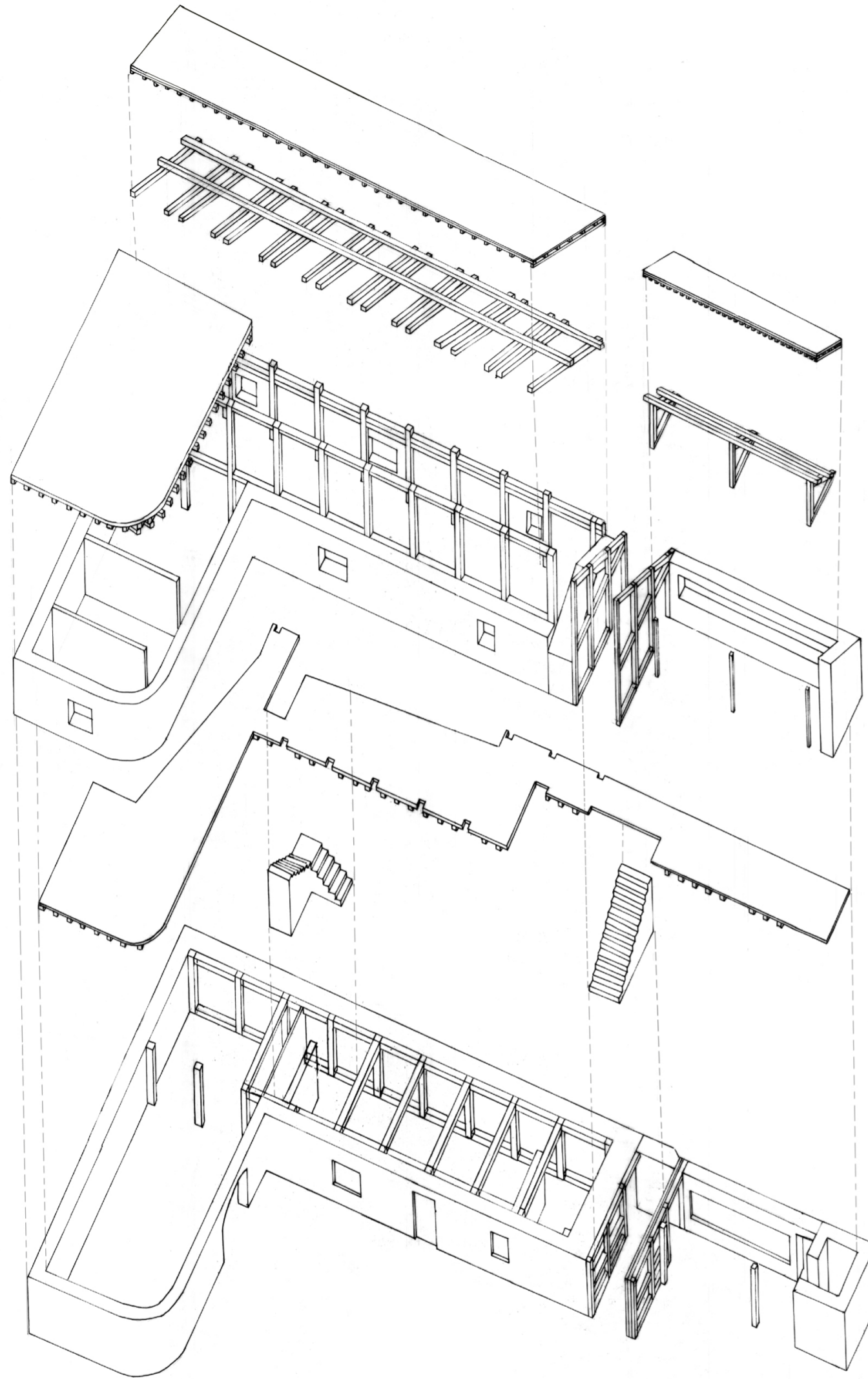
The first sketches addressed the connection of the existing structure with the proposed intervention. Different massing, circulation and space layouts were explored to show how additional space volumes could be created to be in harmony with the historic fabric, while remaining in visual order, maintaining the historic character and improving the experience of the visitors in the building.

VISUAL SKETCHES



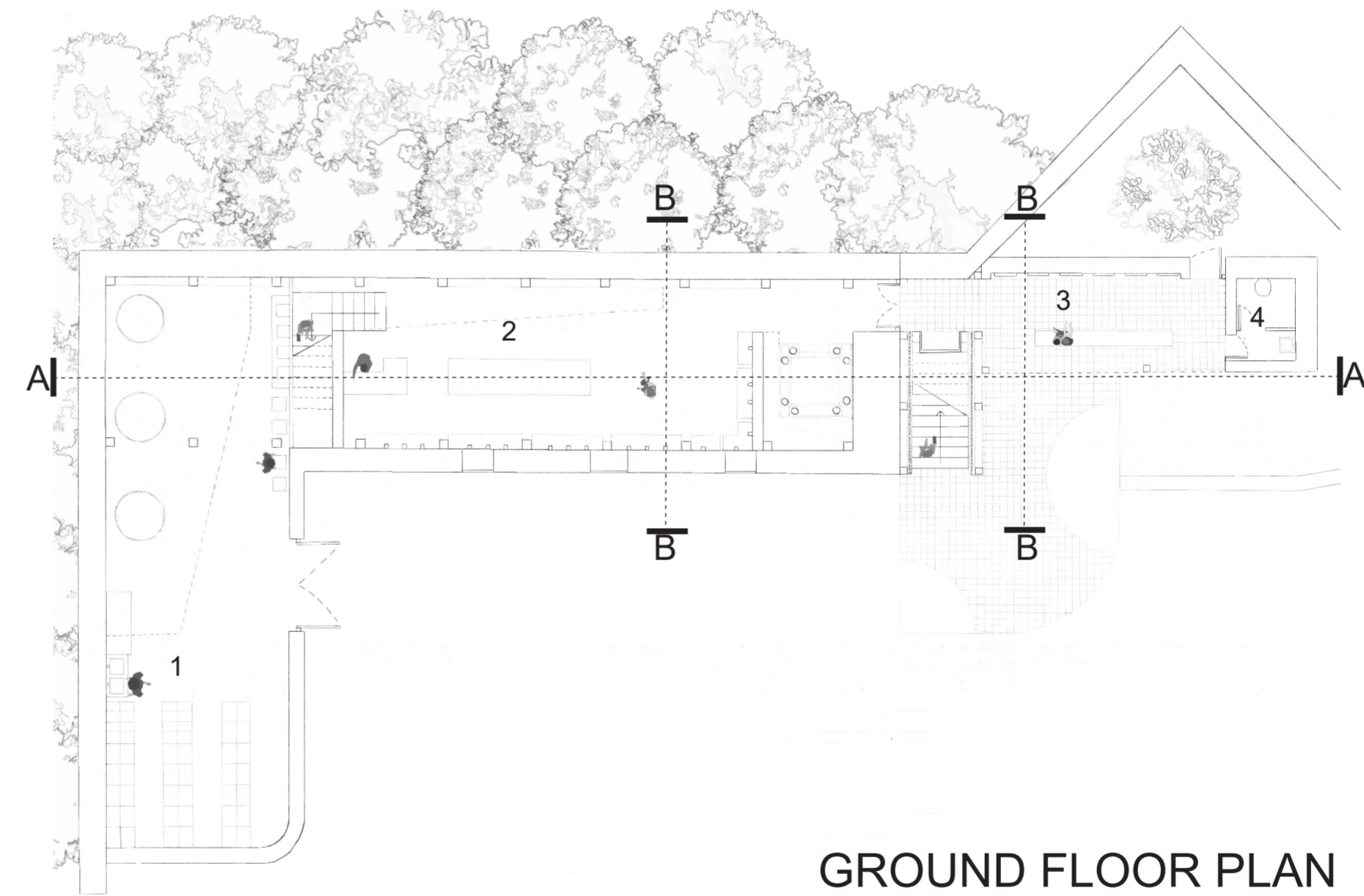
The visual sketches were created with the intention of conveying the space and flow of people through the cider house. They show design intentions such as circulation routes, scale and proportions, spaces for production, social spaces and viewing points, and allow for an assessment of the relationship between a building and new additions.

AXONOMETRIC



First Floor

The First Floor is devoted to social interaction and tasting experiences. The production areas are visible from a seating area and bar, which provides visitors with a view of the cider-making process, while enjoying the finished product. There are areas for supporting the efficient operation of the premises, such as storage areas and staff changing rooms. The floor is welcoming to everyone, it encourages people to gather, relax and engage with the character of the site.



Ground Floor

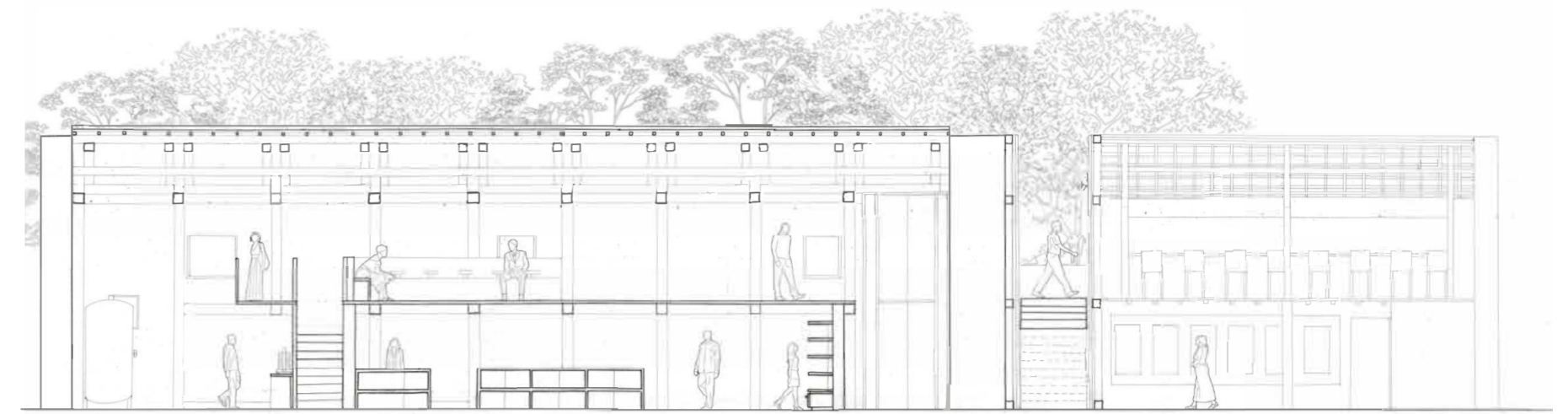
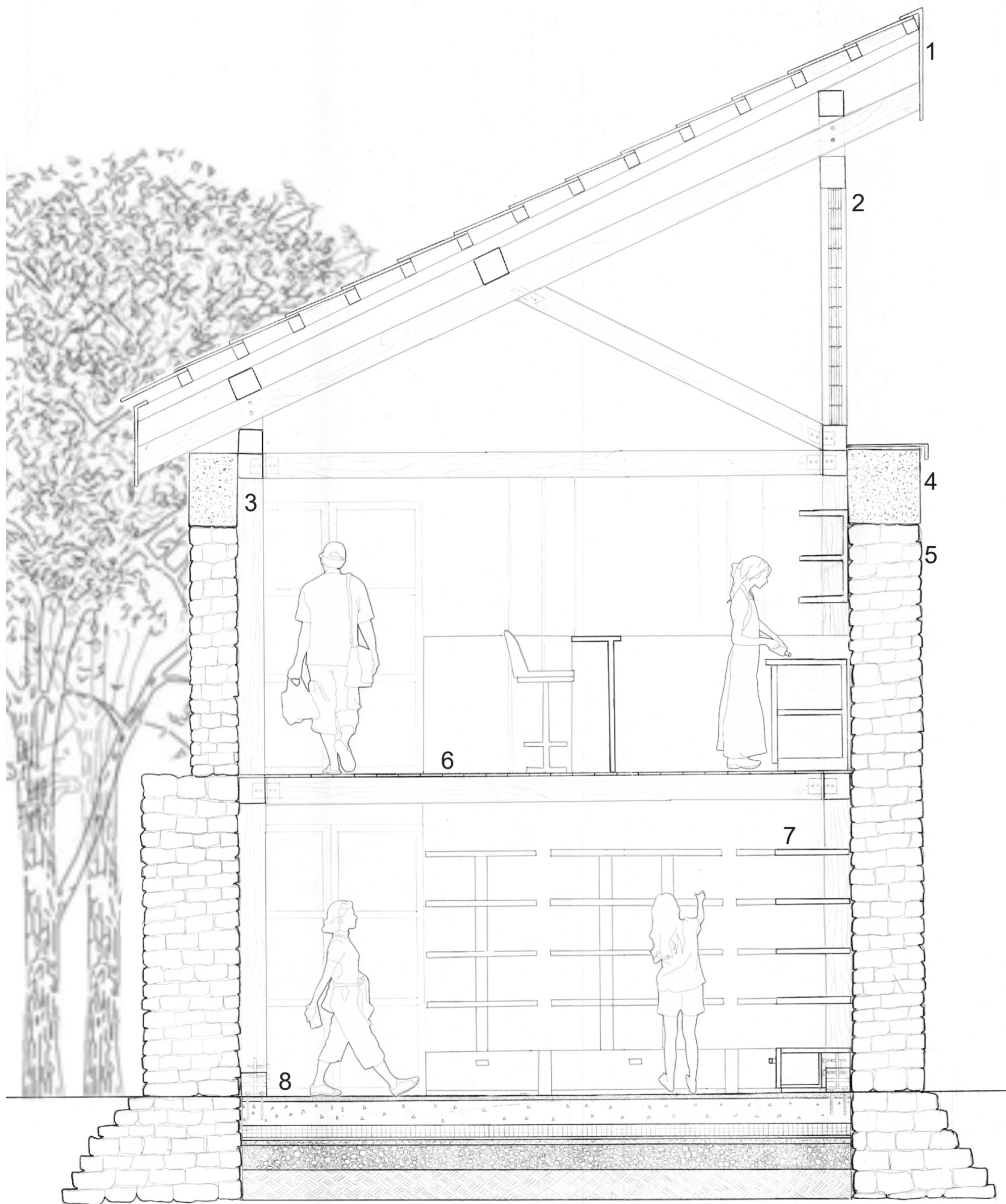
The Ground Floor welcomes visitors to the cider-making process with a series of cider-making, interpretation and retail areas. The production area highlights the cider preparation, the building's existing structure, and the existing walkway is used to demonstrate the building's heritage and local cider-making traditions. A gift shop and facilities for visitors enhance the experience to provide an engaging introduction to the connectivity of craft, history and place.

PERSPECTIVE



KEY

1. Production Area
2. Gift Shop
3. Historical Walkway
4. WC
5. Seating Area
6. Bar Area
7. Storage
8. Staff Locker/ Changing Room



SECTION A-A

MATERIALS

1. ROOF
 - Roof Cladding (40mm)
 - Counter Batten (100mm)
 - Internal Lining (100mm)
 - Truss Structure (200mm)
2. ROOF WINDOW
 - Glass Block (100 x 150 x 150 mm)
3. STRUCTURE
 - Structural Glulam Timber (200mm)
4. ADDITIONAL WALL
 - Concrete
5. EXISTING WALL
 - Stone
6. NEW FLOORING
 - Timber Finished Flooring (25mm)
 - Structural Glulam Timber (200mm)
 - Timber Joist Flooring (exposed)
7. BOTTLE DISPLAY SHELVING
 - solid oak Timber
8. NEW FOUNDATION
 - Polished Concrete Finish
 - Rigid Floor Insulation
 - Damp Proof Membrane (DPM)
 - Sand Blinding Layer
 - Crushed Stone Layer
 - Compacted Earth

MODEL ELAVATION

