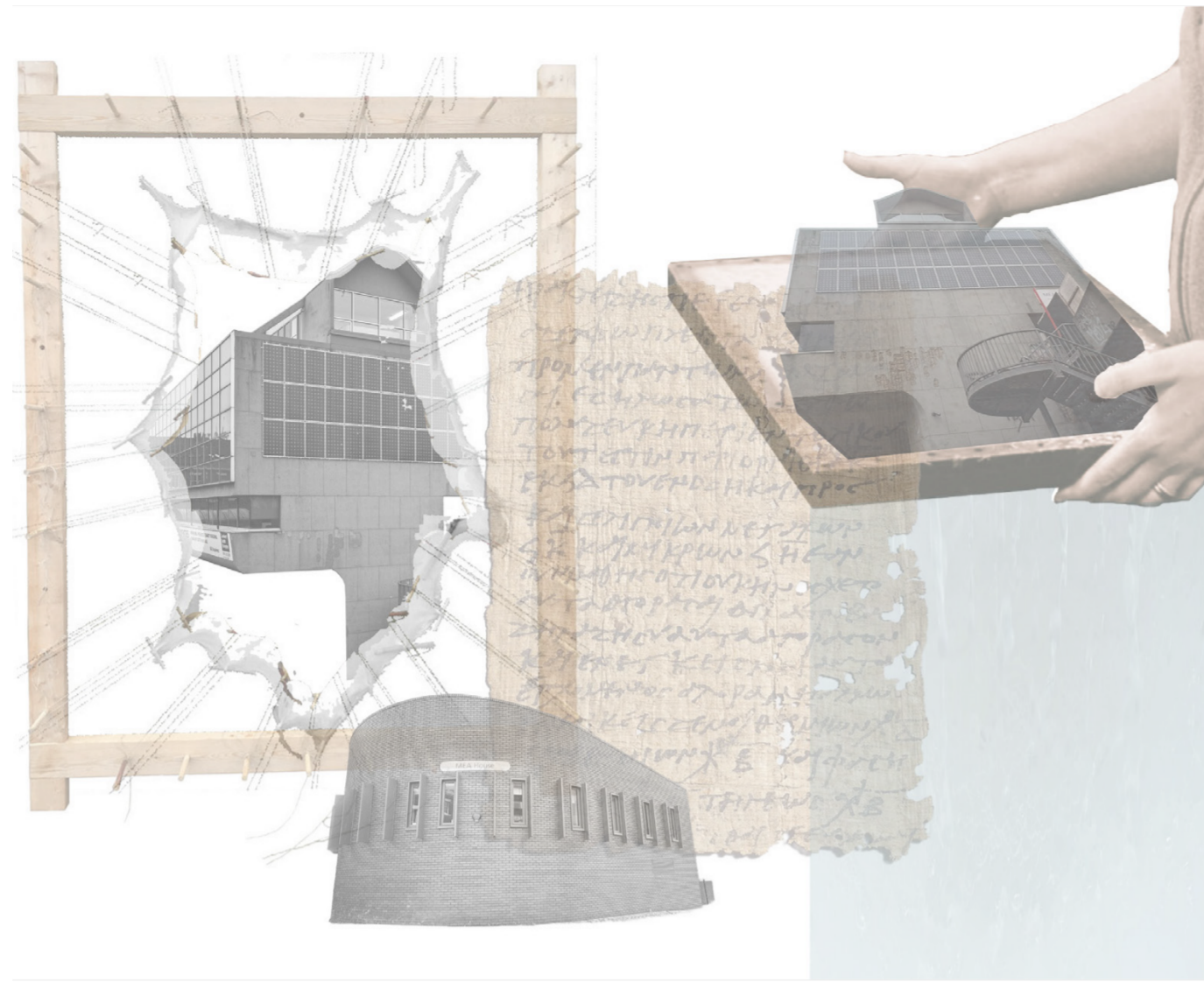


RESET- THE NEXT PAGE

This project explores a process-led approach to civic interior architecture through the transformation of paper waste within MEA House. Inspired by the building's stripped-back material condition, where exposed stud walls and torn plasterboard revealed interiors that felt paper-thin within a concrete and steel structure. Developed through material experimentation, it tests the reuse potential of everyday paper waste and translates these findings into spatial, material and community-led interventions. A visible loop system enables waste paper to be collected, pulped, remade and reused as journals and other resources. Transforming disposal into collective production. By combining material research, participatory making and principles of material reuse, the project reimagines waste as a shared civic asset while demonstrating how experimentation can directly inform spatial outcomes and community engagement.



View of MEA House from Durant Road featuring the auditorium



"City in the Sky" walkway



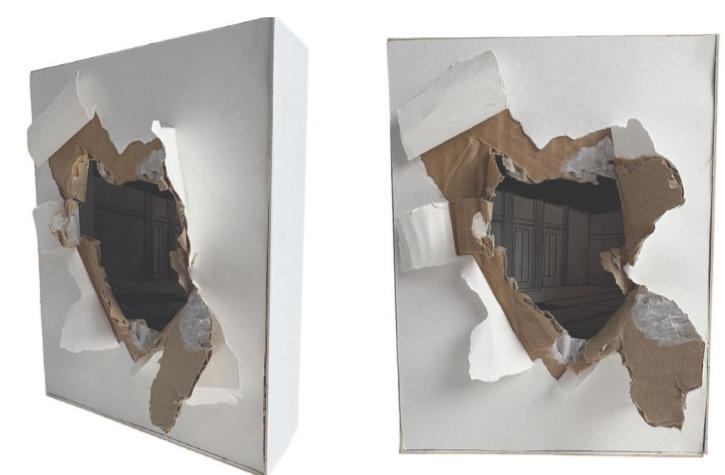
Overhanging second floor



Site Plan
MEA House, Newcastle Upon Tyne



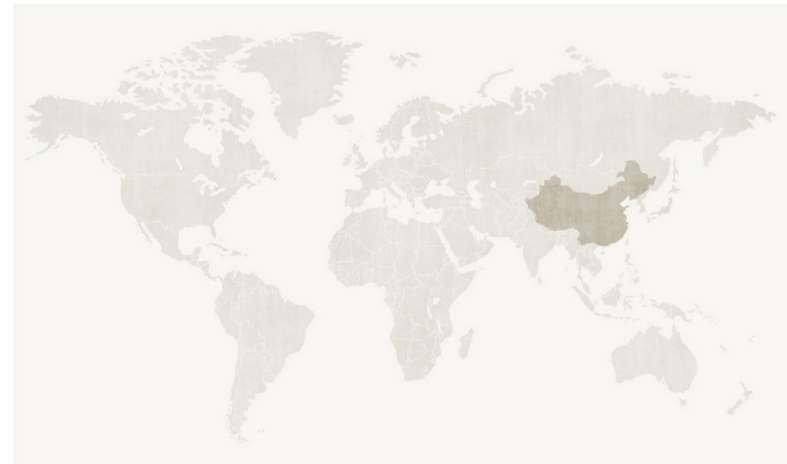
Vignette model exploring the concept of "paper-thin" walls



Where paper making began and spread across the world



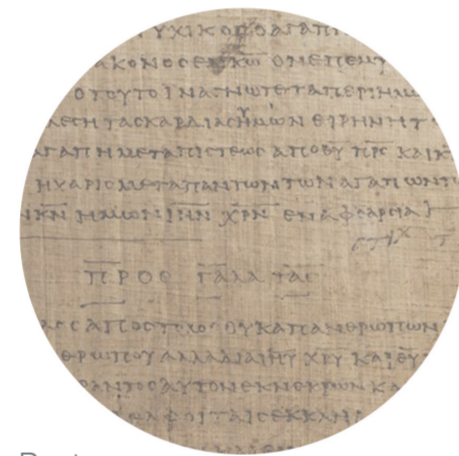
2000 years ago, Lei Yang, China paper was first made from hemp and bark



8th Century, 300 years later, paper making came to the Middle East



500 years later travelling to Europe with Spain having the first paper mill



Past

Paper seen as a luxury item, reused as much as possible to get maximum useage



Present

Paper is very common and produced on large scales therefore usually a one use throw away item



Future

Re-use waste paper into new paper to reduce single useage and become more sustainable



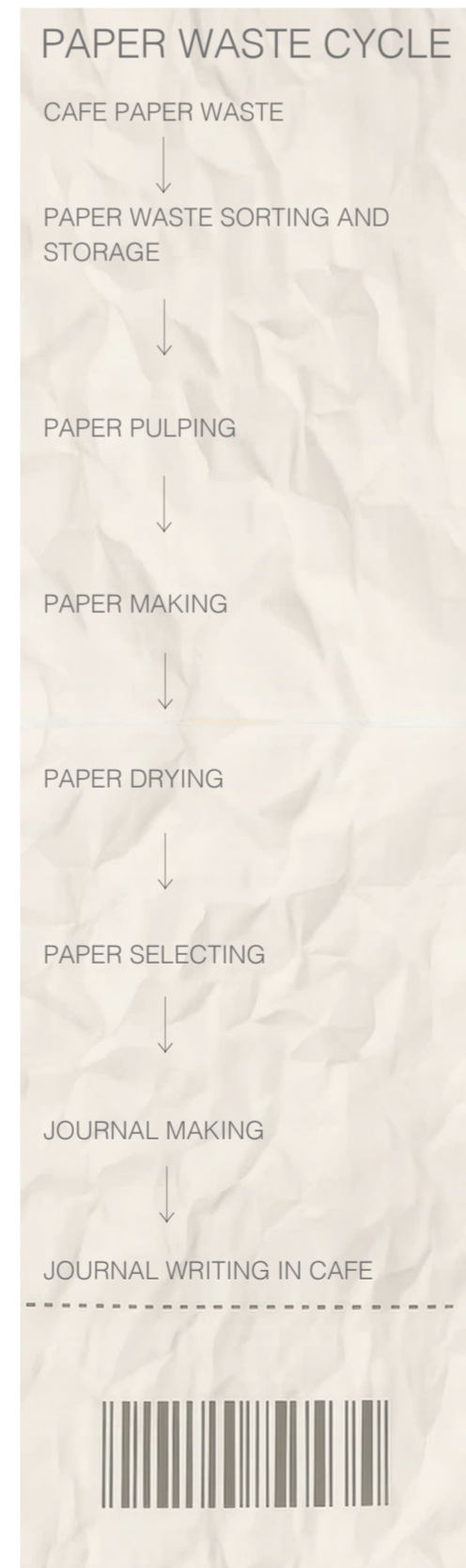
Cafe waste



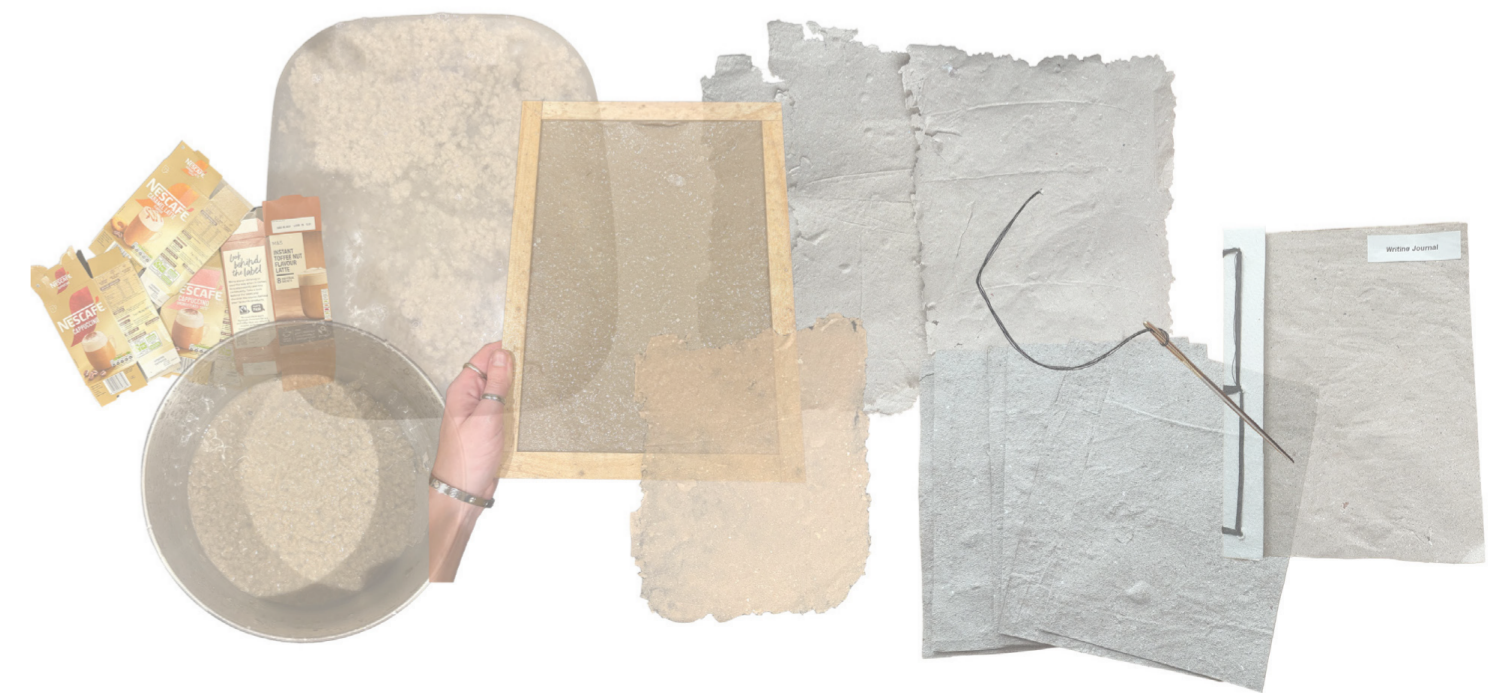
Re-Made paper



Re-Use of paper



Paper making timeline collage



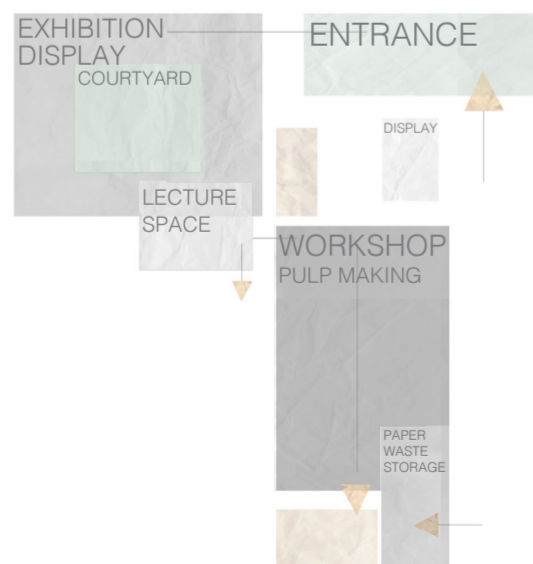
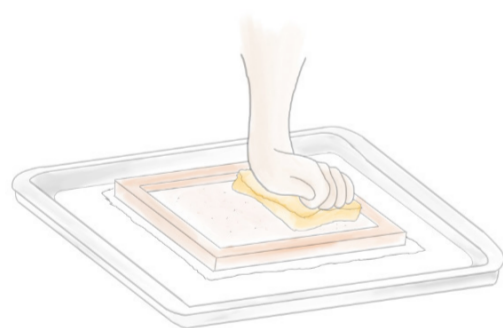
Paper making process



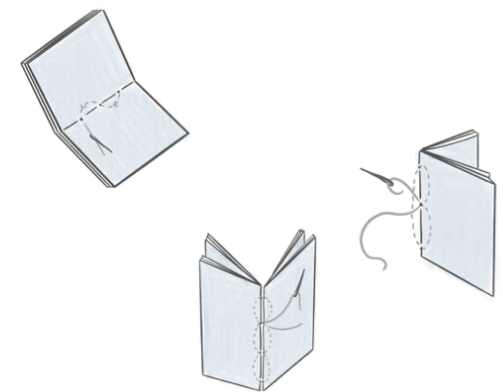
Second Floor Block Plan



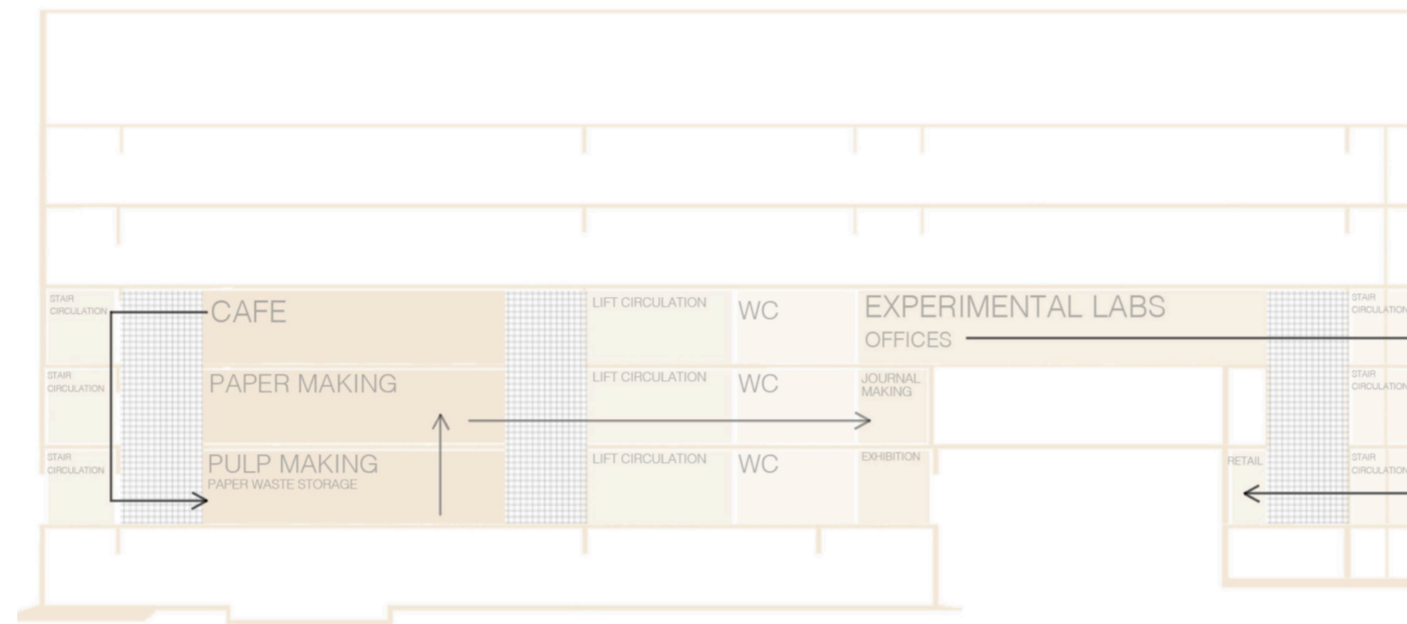
First Floor Block Plan



Ground Floor Block Plan



Collage Showing Functions Using Paper Waste



Section diagram showing paper waste circulation within functions

Material Testing

Experimentation with single use paper and resin in a waste plastic yogurt pot



Tissue paper



Birthday card envelope



Cardboard box



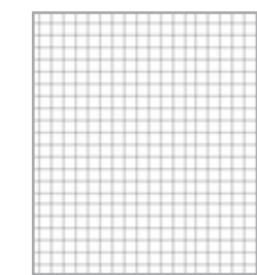
Post-it notes



Paper making deckle



Plywood



White powder coated steel mesh

Material Concept

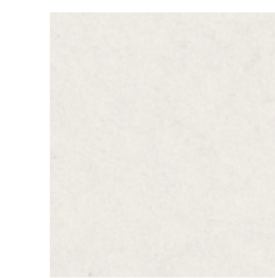
Inspired by the paper making deckle, the materiality within the scheme combines plywood and white powder-coated steel mesh, drawing from material qualities of the paper making process.

Sustainable materials- Made from paper waste

Honext, Richlite and PaperStone tiles are incorporated throughout the scheme to demonstrate alternative uses for waste paper, showcasing how it can be transformed into sustainable materials.



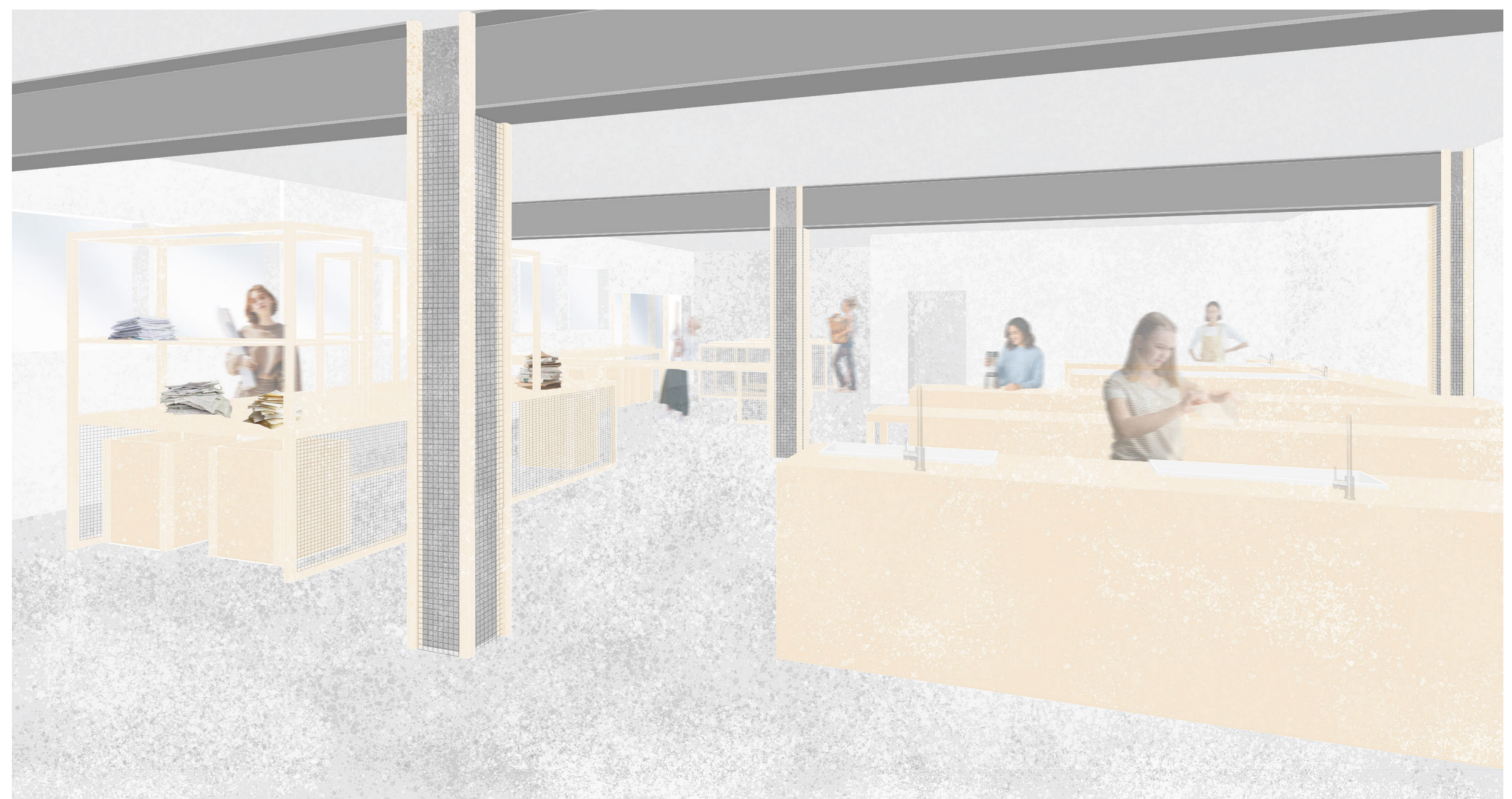
Honext



PaperStone tiles



Richlite



Perspective within the Pulp Making Workshop on the Ground Floor

Paper waste sorting area, storage of waste paper to be chosen from to start the pulp making, worktops for paper pulp making, basins for the pulp



1:20 model of seating and display within the exhibition looking onto paper hanging display



1:20 model of seating within the material displays

Spatial Concept
Paper sizes

Seating

Mini test lab

Seating

Seating and display units

Display and paper hanging



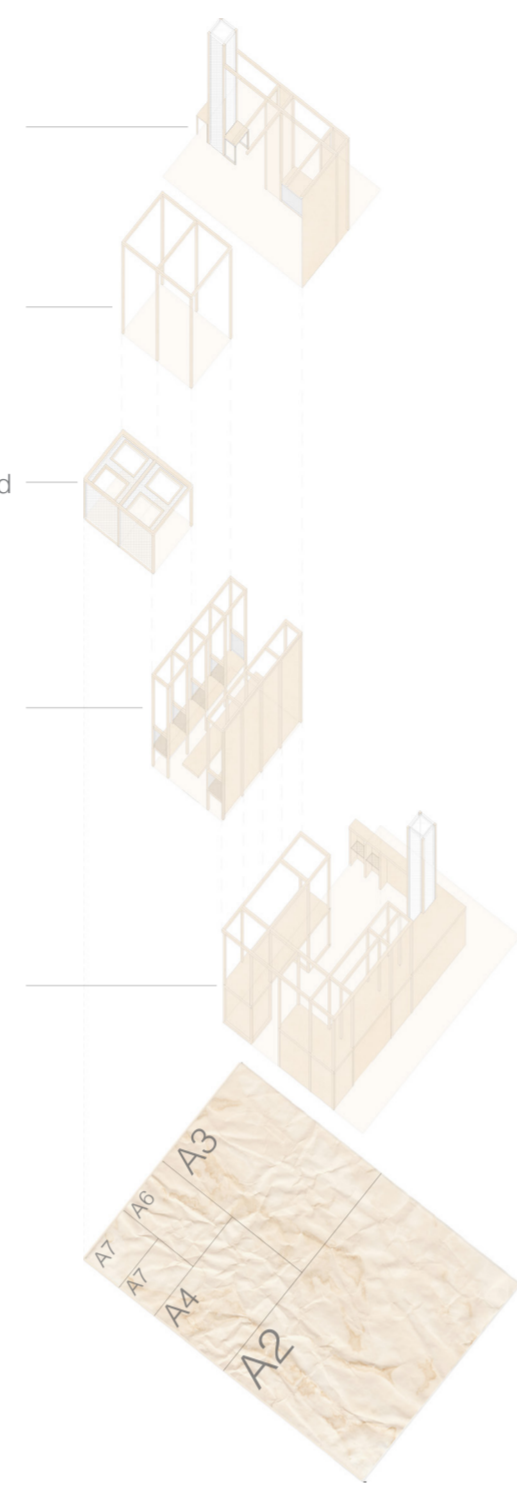
Seating

Bin waste collection/ removal

Bins- cafe users involved in the paper reuse cycle

Seating

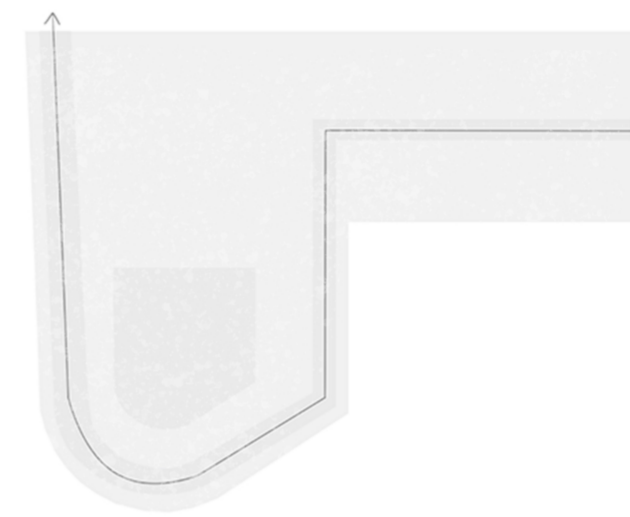
Cafe serving area



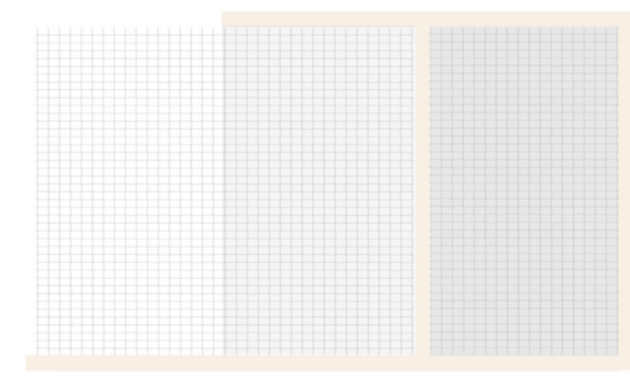
The cafe and material displays are proportioned according to A-series paper dimensions



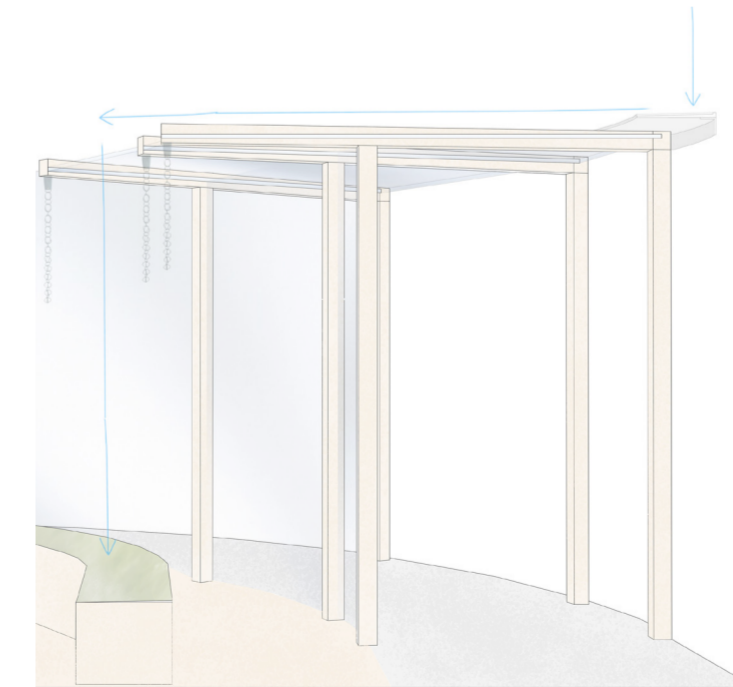
Parti-Diagram
Ground Floor Circulation
Through the exhibition into pulp making



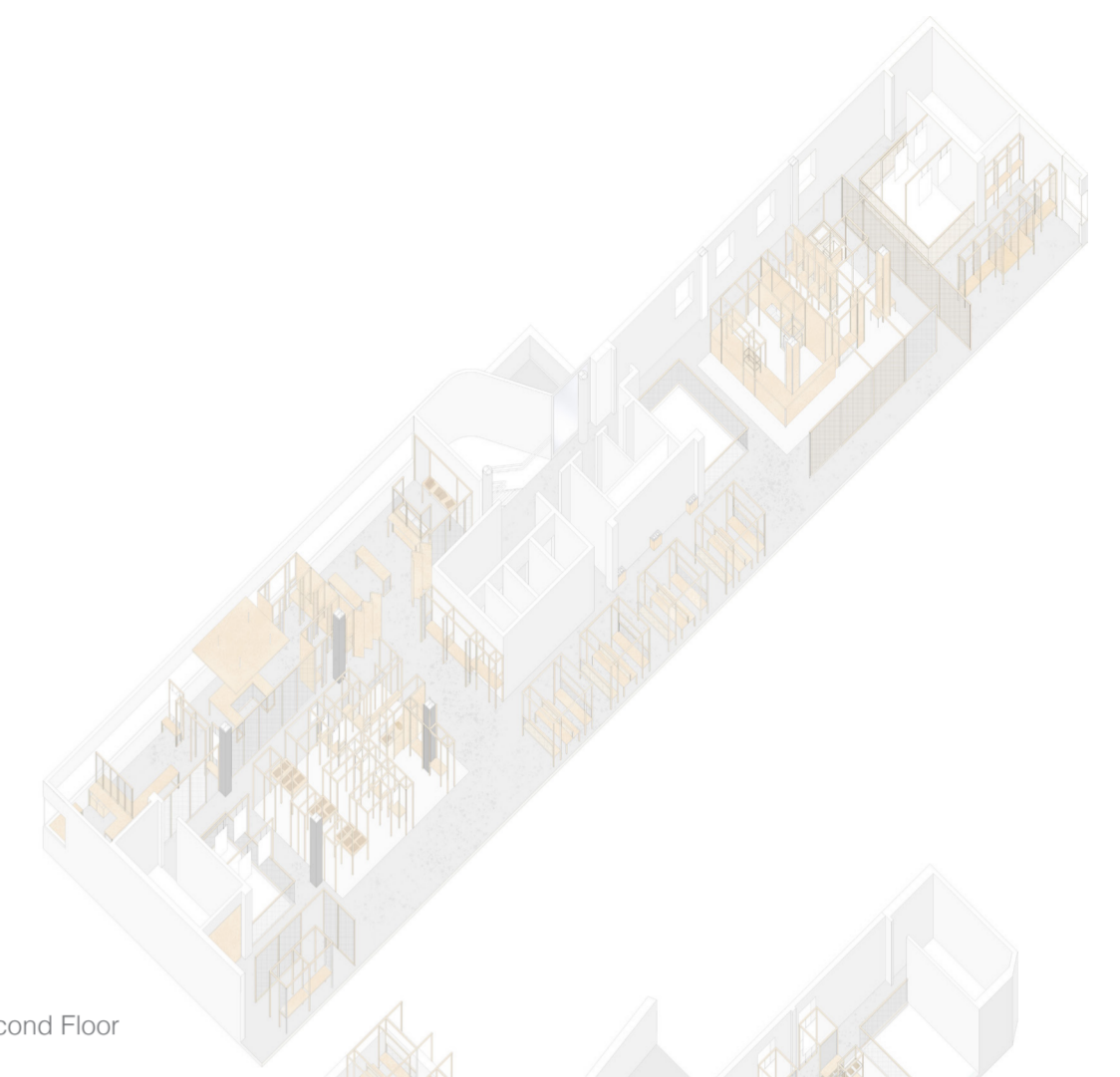
Parti-Diagram
First Floor Circulation
Paper making to paper drying



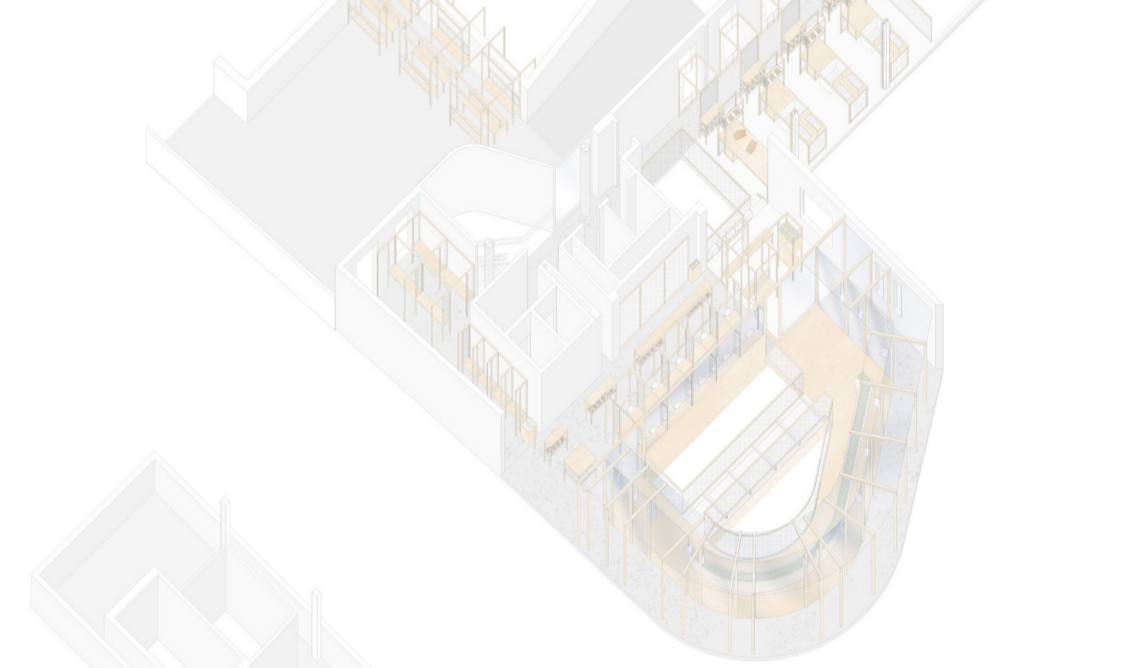
Parti-Diagram
Auditorium Courtyard- First Floor
Exposed- Semi-Enclosed- Enclosed



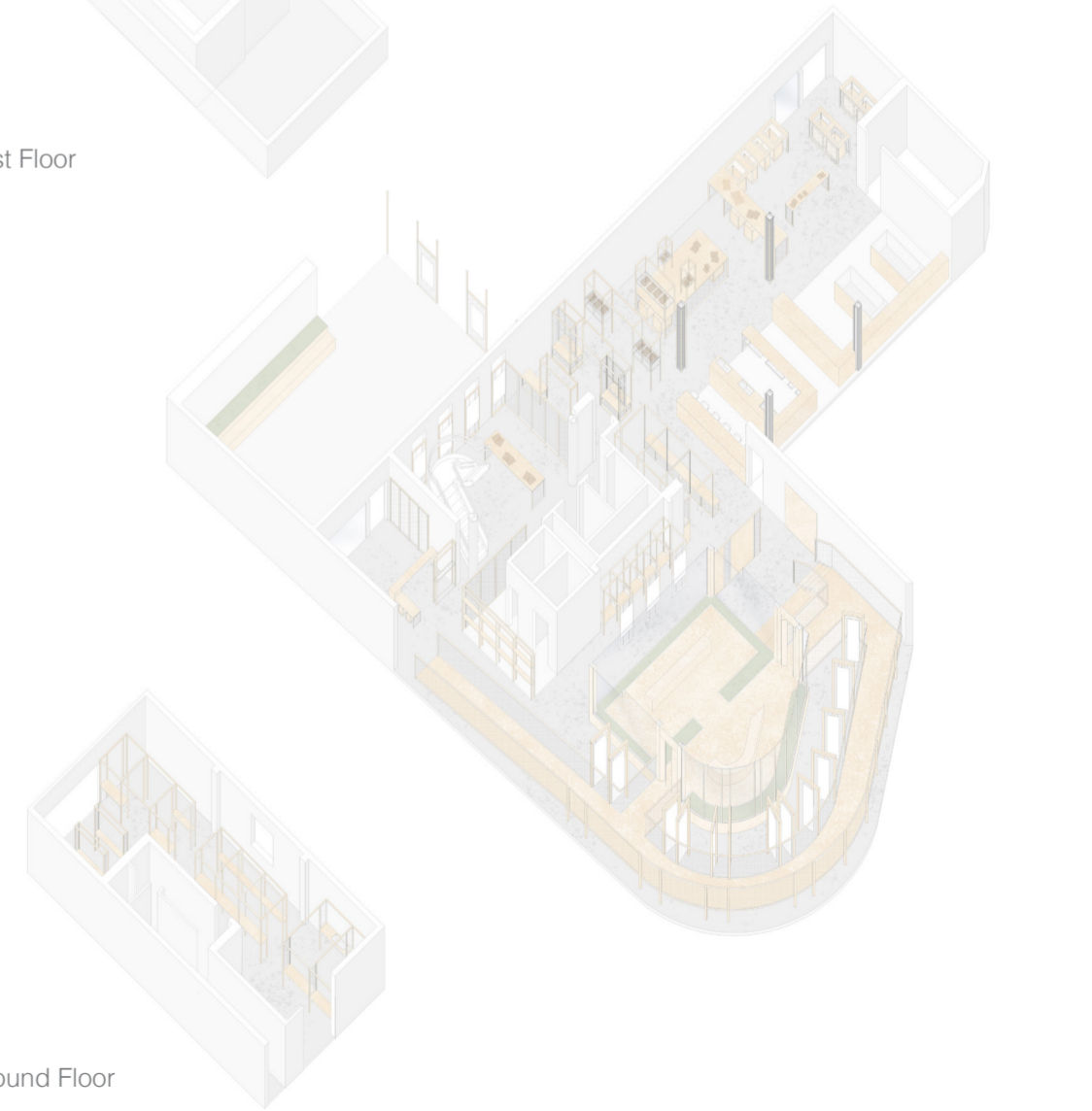
Glass roof design within the auditorium on the first floor flows rainfall into planters to be collected and used as grey water within the pulp making



Second Floor



First Floor

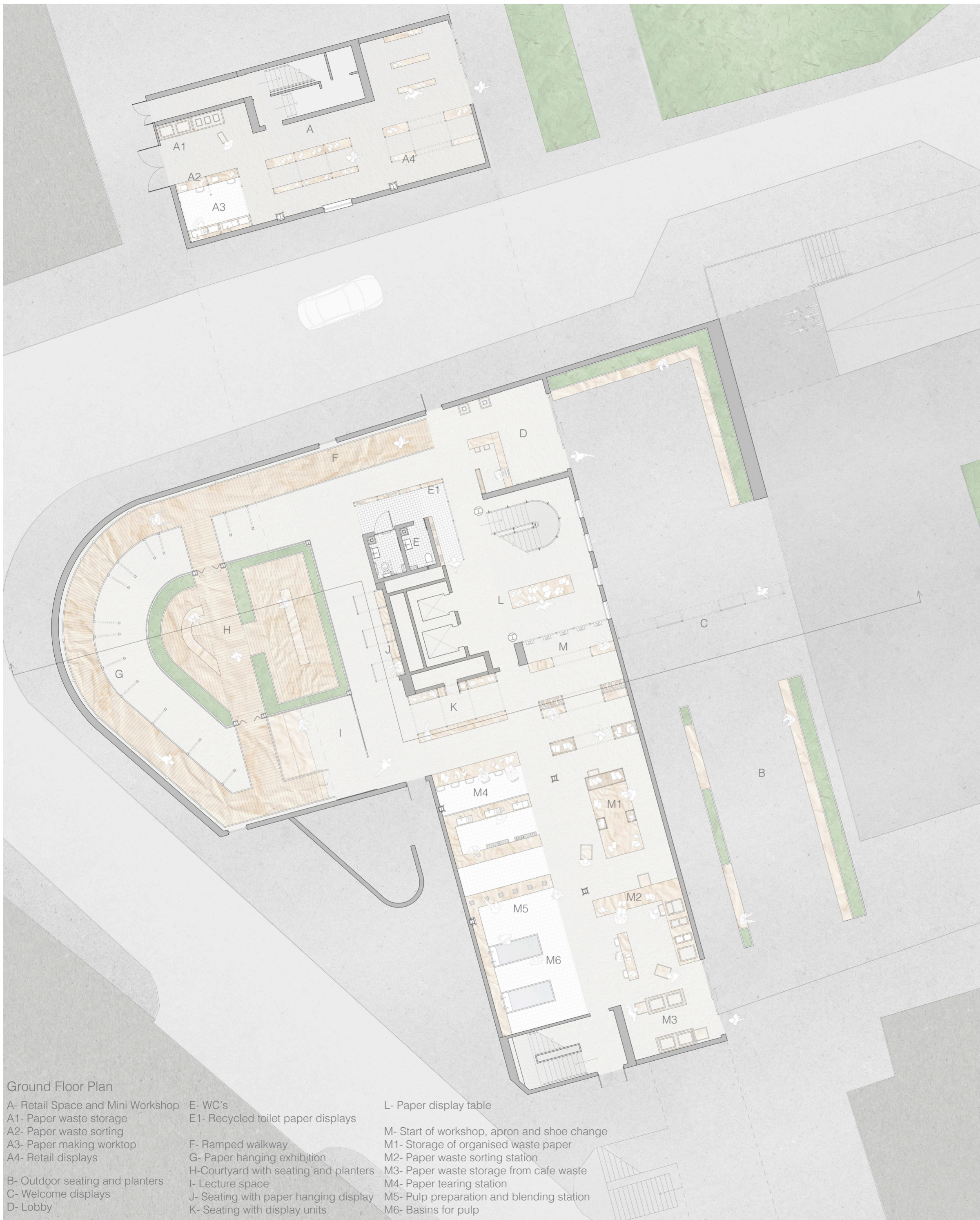


Ground Floor

Scheme Axonometric

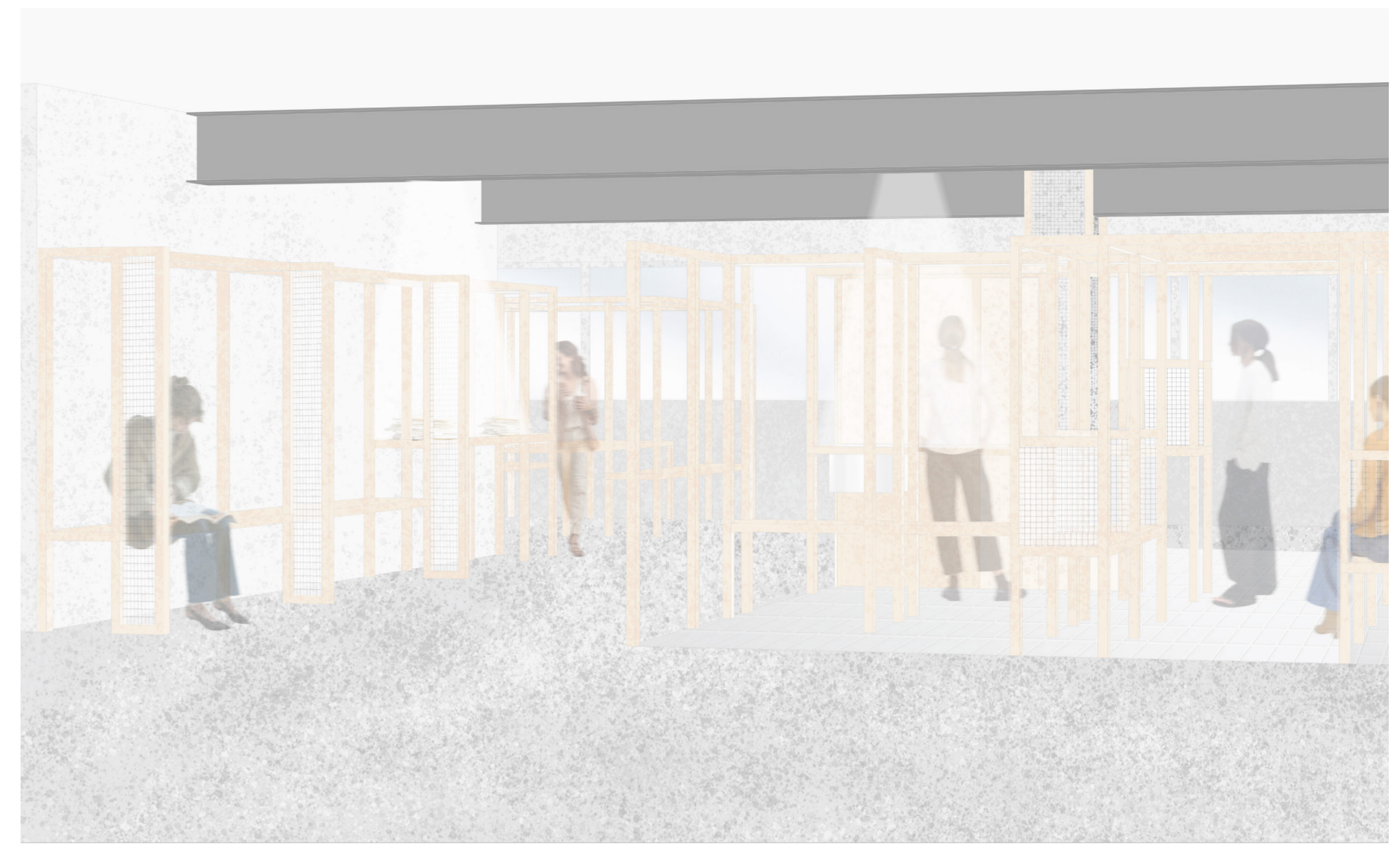


Perspective within Auditorium Courtyard
Paper Hanging Display

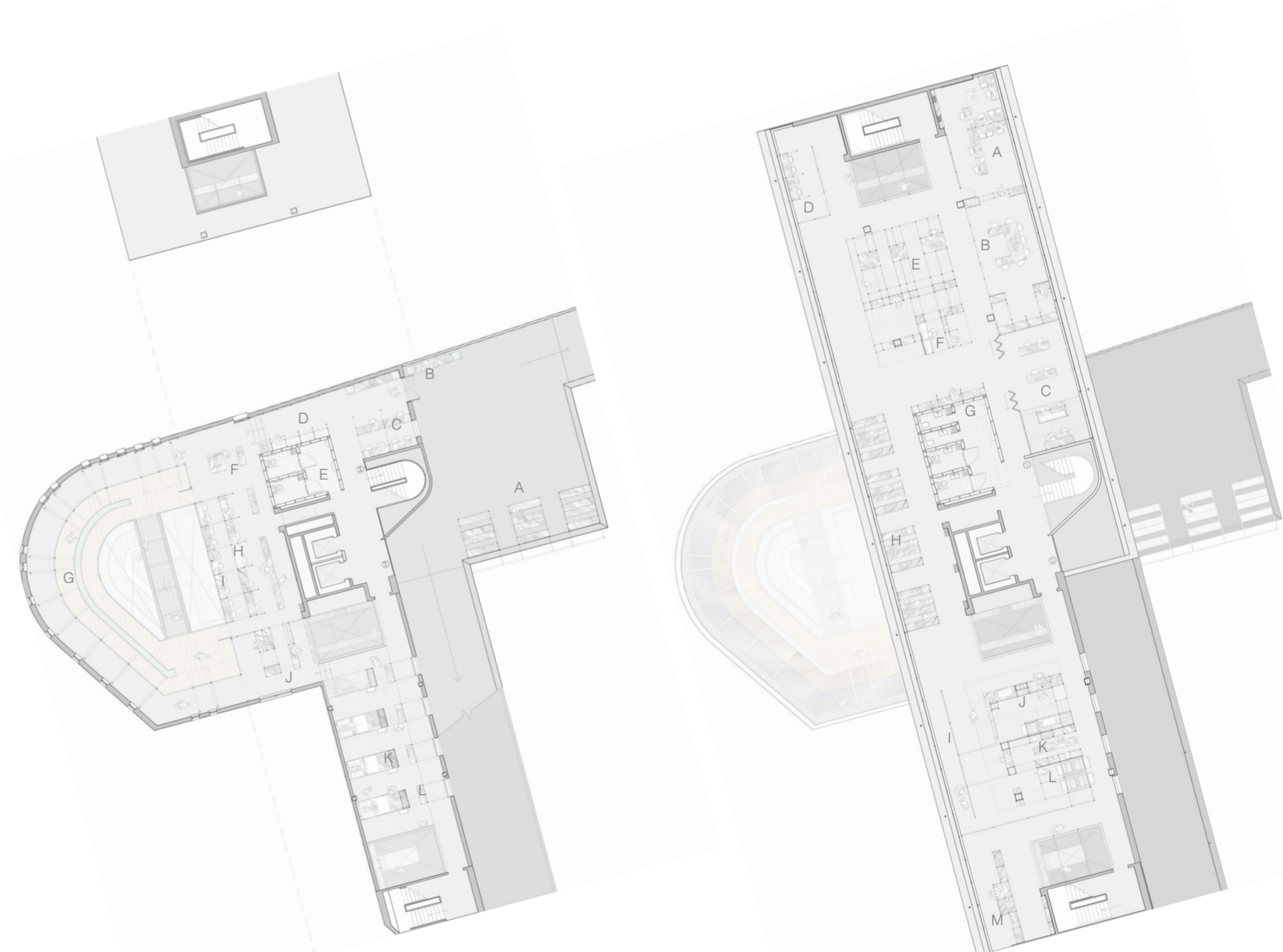


Ground Floor Plan

- A- Retail Space and Mini Workshop
- A1- Paper waste storage
- A2- Paper waste sorting
- A3- Paper making worktop
- A4- Retail displays
- B- Outdoor seating and planters
- C- Welcome displays
- D- Lobby
- E- WC's
- E1- Recycled toilet paper displays
- F- Ramped walkway
- G- Paper hanging exhibition
- H- Courtyard with seating and planters
- I- Lecture space
- J- Seating with paper hanging display
- K- Seating with display units
- L- Paper display table
- M- Start of workshop, apron and shoe change
- M1- Storage of organised waste paper
- M2- Paper waste sorting station
- M3- Paper waste storage from cafe waste
- M4- Paper tearing station
- M5- Pulp preparation and blending station
- M6- Basins for pulp



Perspective of the Material Testing and Display on the Second Floor
Seating, mini test lab, displays



First Floor Plan

- A- Outdoor seating
- B- Seating and planters
- C- Reflective writing space
- D- Seating
- E- WC's
- F- Storage of remade paper
- G- Courtyard with paper hanging
- H- Journal making desks

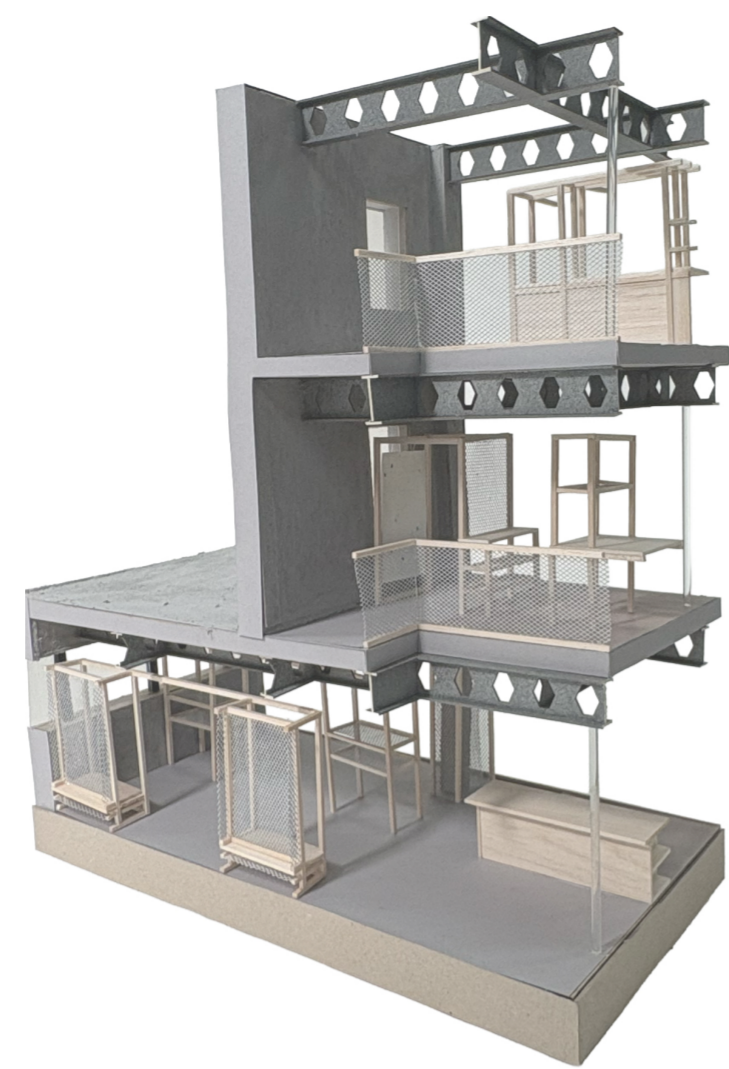
- I- Writing seating
- J- End of paper making workshop, apron and shoe change
- K- Paper making worktops
- L- Drying racks

Second Floor Plan

- A- Staff offices
- B- Meeting room
- C- Material testing lab
- D- Reflective writing space
- E- Material display
- F- Mini workshop
- G- WC's
- H- Cafe seating
- I- Paper pin up board
- J- Cafe serving
- K- Cafe seating
- L- Bins
- M- Seating



Cafe serving area



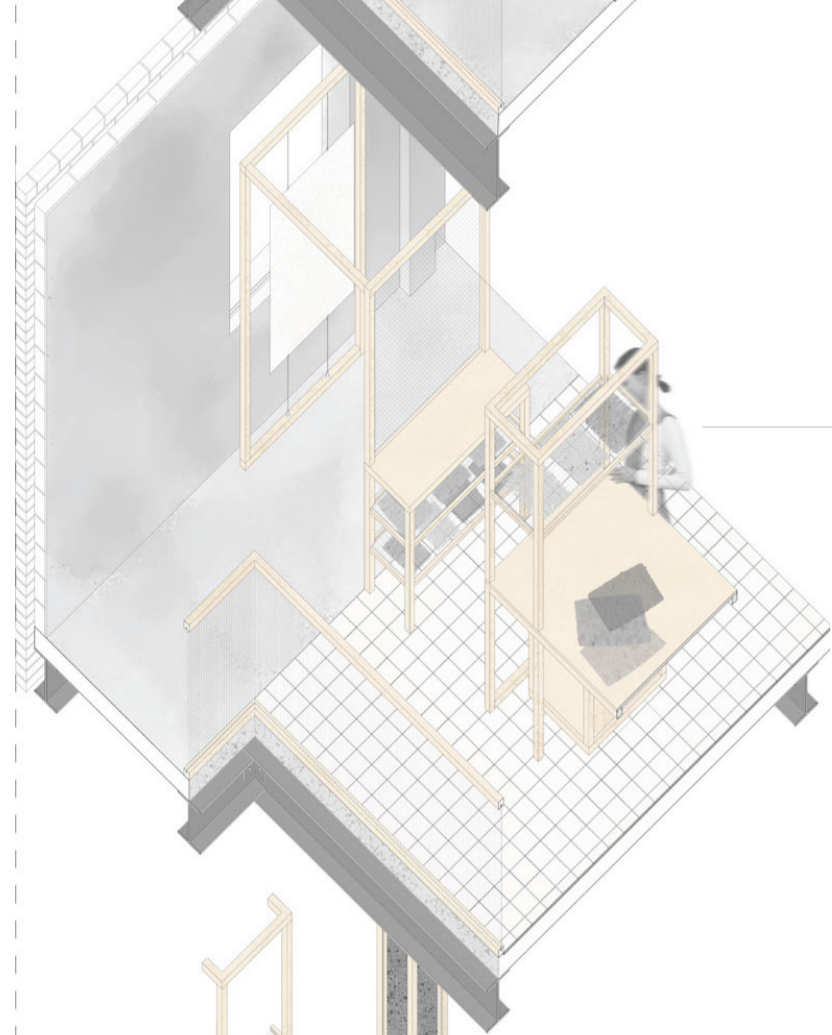
1:20 Model



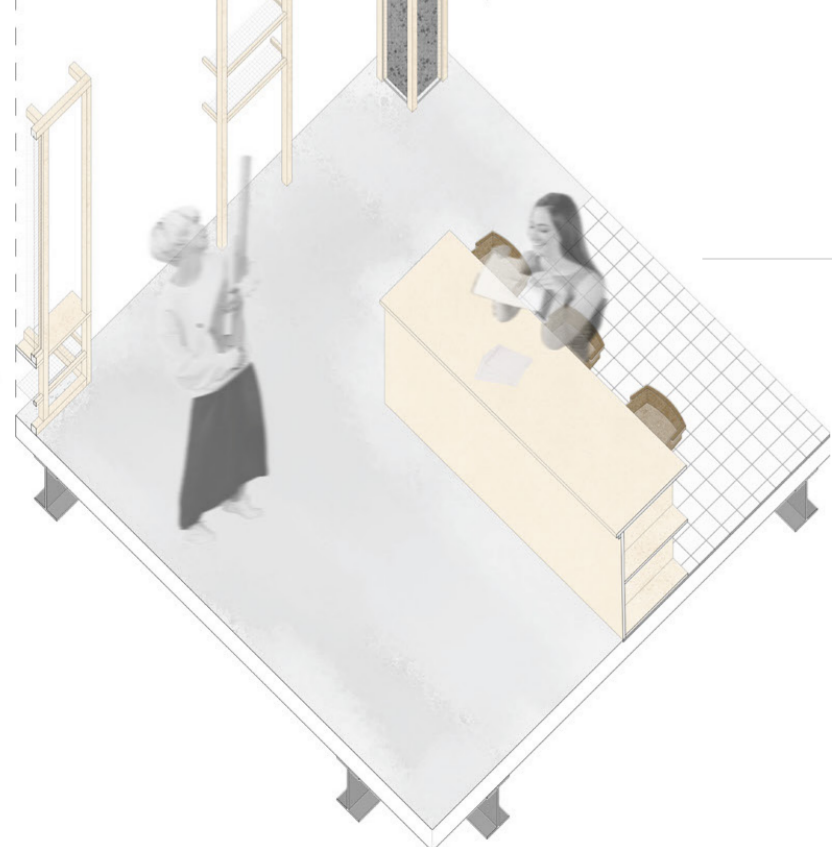
Perspective within paper making workshop



Perspective within pulp making workshop

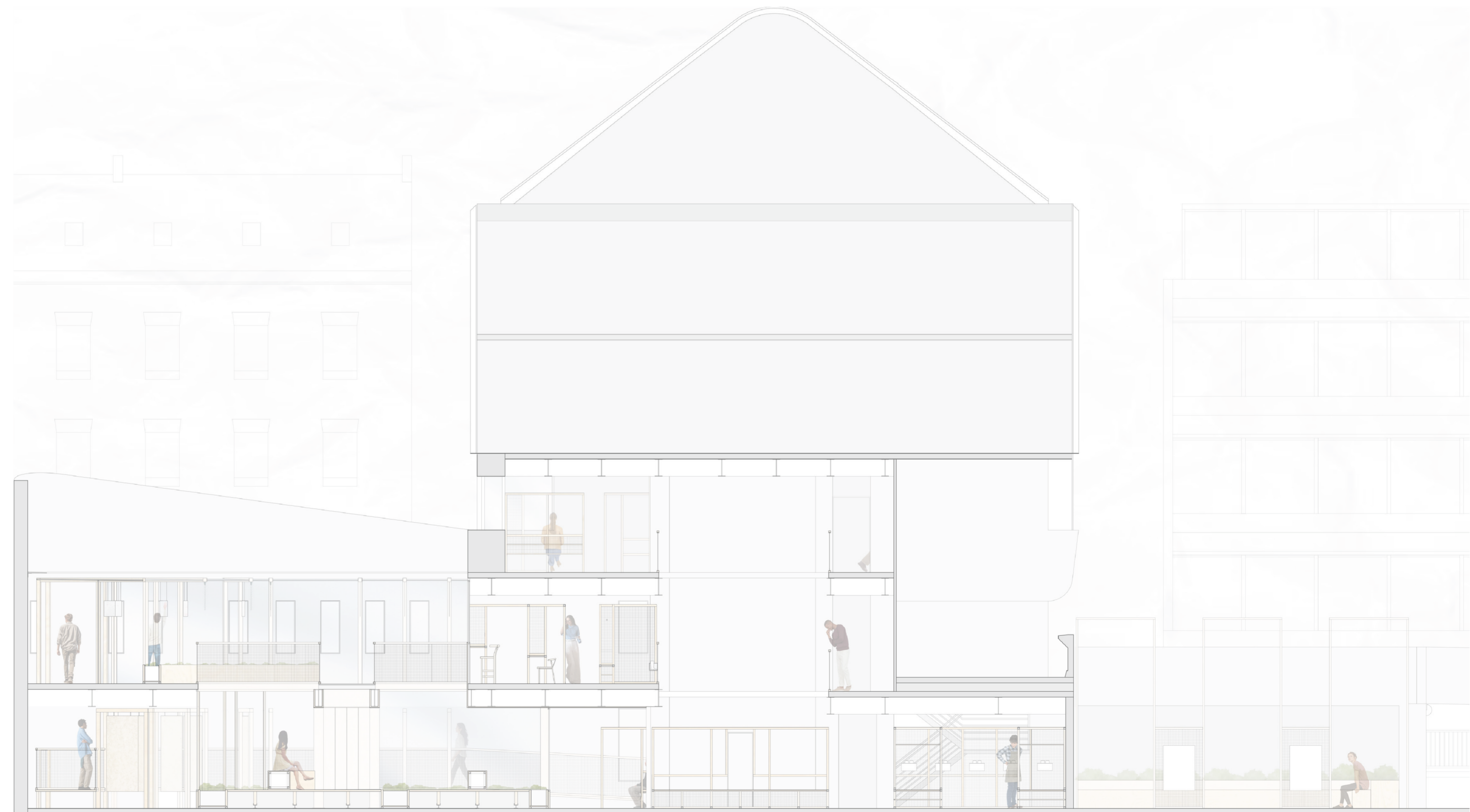


Paper making workshop-
Paper drying racks



Pulp making workshop

1:20 Technical Axonometric



Scheme Section