

## WHAT IS SIRLUTE?

Sirlute is a London creative charity offering free mentoring, learning, and skills training to 5-25-year-olds from under-resourced communities.

By opening pathways into creative fields such as music, game design, multimedia, and fashion, the organisation expands access to opportunities that foster personal growth and creative progression.

## WHAT'S THE MISSION?

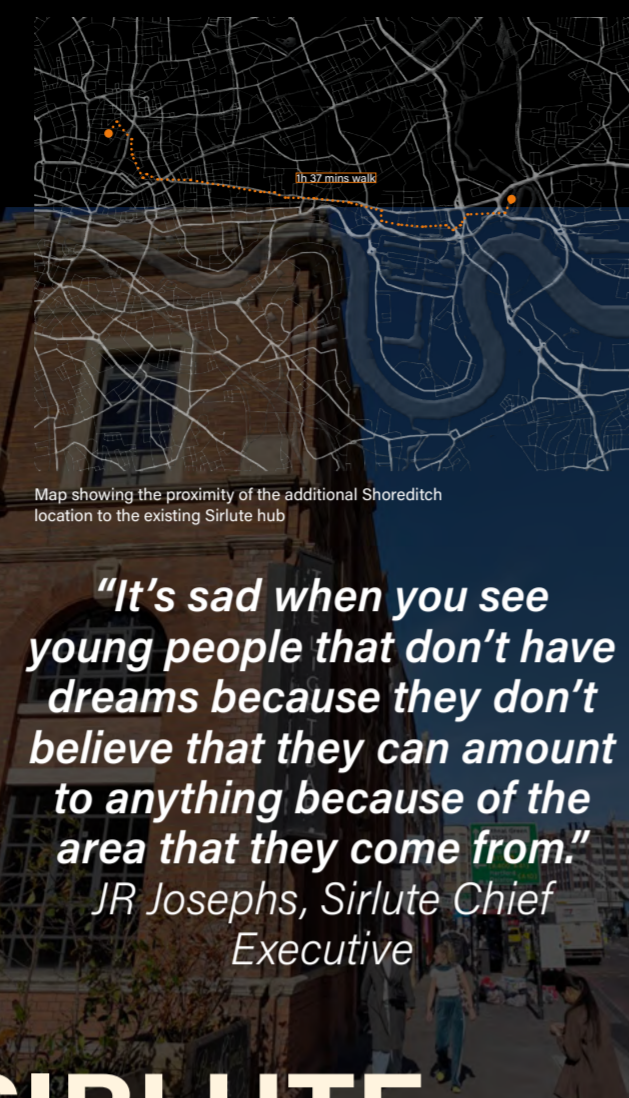
Sirlute's mission centres on reducing youth crime through expanded access to the creative industries, supporting the development of local talent. With a clear vision to empower emerging youth culture, the organisation prioritises inclusivity, cultivating a supportive and non-judgmental environment in which young people can thrive irrespective of their circumstances.

## THE NEED

Continued cuts to youth services have restricted access to developmental resources, contributing to the marginalisation of young people. Despite this, these communities remain important cultural incubators, producing influential artists and creative professionals. Sirlute addresses this gap by delivering structured learning, mentorship, and support, enabling young people to develop confidence and unlock pathways to creative and professional advancement.

## EXPANSION VISION

Introducing an additional centrally located hub expands access to free creative learning, mentoring, and training for local young people from lower-income households. The proposal evolves beyond its educational role by creating a shared environment that brings together diverse social groups, including a coffee shop and bar strategically designed to welcome a broad demographic and strengthen the spatial experience. These facilities will fund the free tutorials.



*"It's sad when you see young people that don't have dreams because they don't believe that they can amount to anything because of the area that they come from."*  
JR Josephs, Sirlute Chief Executive

# SIRLUTE



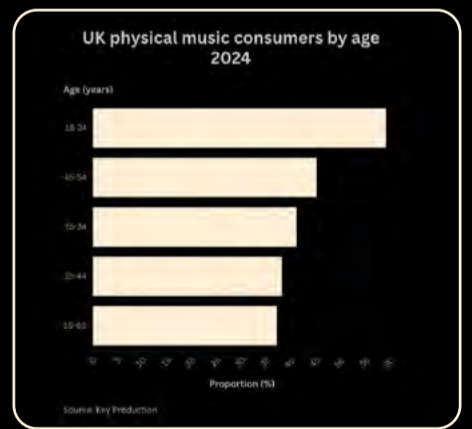
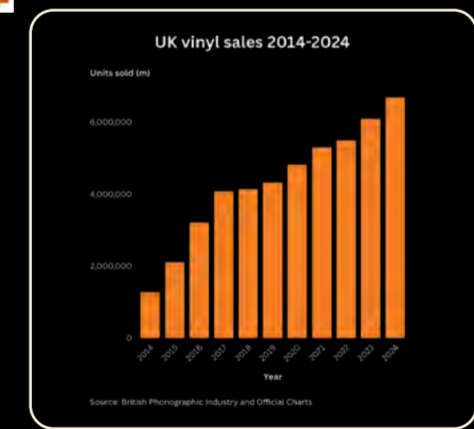
## CHALLENGE

The local population is predominantly aged 16-34, with a mix of social and privately rented housing. Located between the contrasting boroughs of the City of London, Tower Hamlets, and Hackney, the site is shaped by diverse social and economic influences. The challenge is to create a design that responds to these varied demographics, ensuring users feel valued, represented, and supported within the space.

# BARRIERS



## TARGET AUDIENCE



# DIFFUSING

- KEY AIMS**
- INCLUSIVITY
  - MERGING SOCIETAL DEMOGRAPHICS
  - CONNECTION
  - IDENTITY
  - LIFE SKILLS
  - SOCIAL INTERACTION
  - IMPROVE MENTAL WELL-BEING

**4 QUALITY EDUCATION**

Free recording studio tutorials for low-income families ensure an inclusive and equitable quality education that promotes life skills.

**10 REDUCED INEQUALITIES**

Promoting equal opportunity and reducing inequality through inclusive spaces such as the vinyl swap library and music listening facilities, and lift.

**11 SUSTAINABLE CITIES AND COMMUNITIES**

Supporting inclusive, sustainable urbanisation through free recording studio use, a vinyl swap library and music listening facilities.

**12 RESPONSIBLE CONSUMPTION AND PRODUCTION**

Achieving the sustainable management and efficient use of natural resources by reusing existing structures and materials.

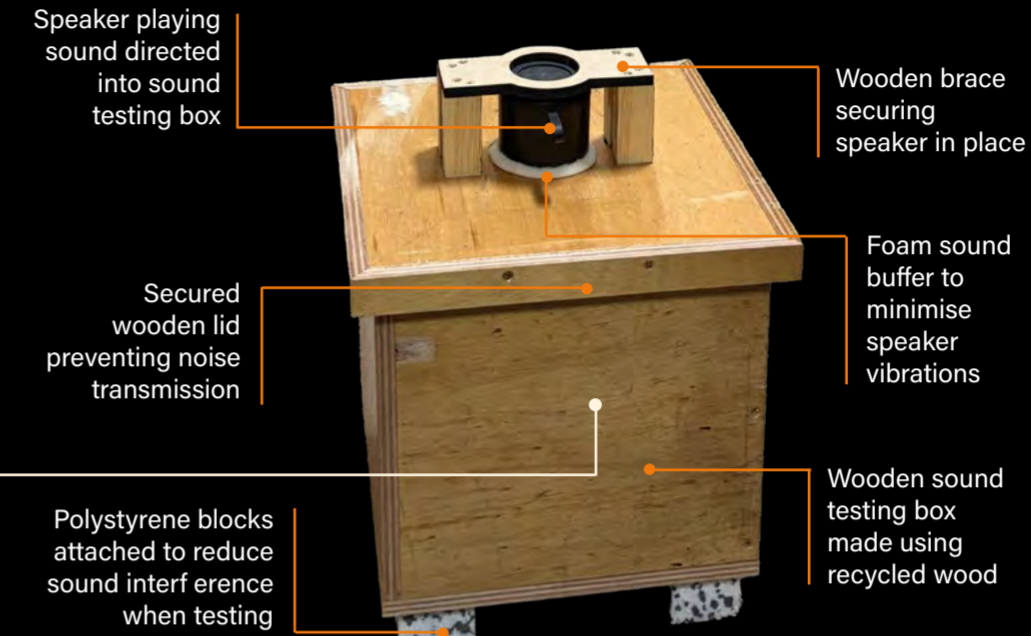
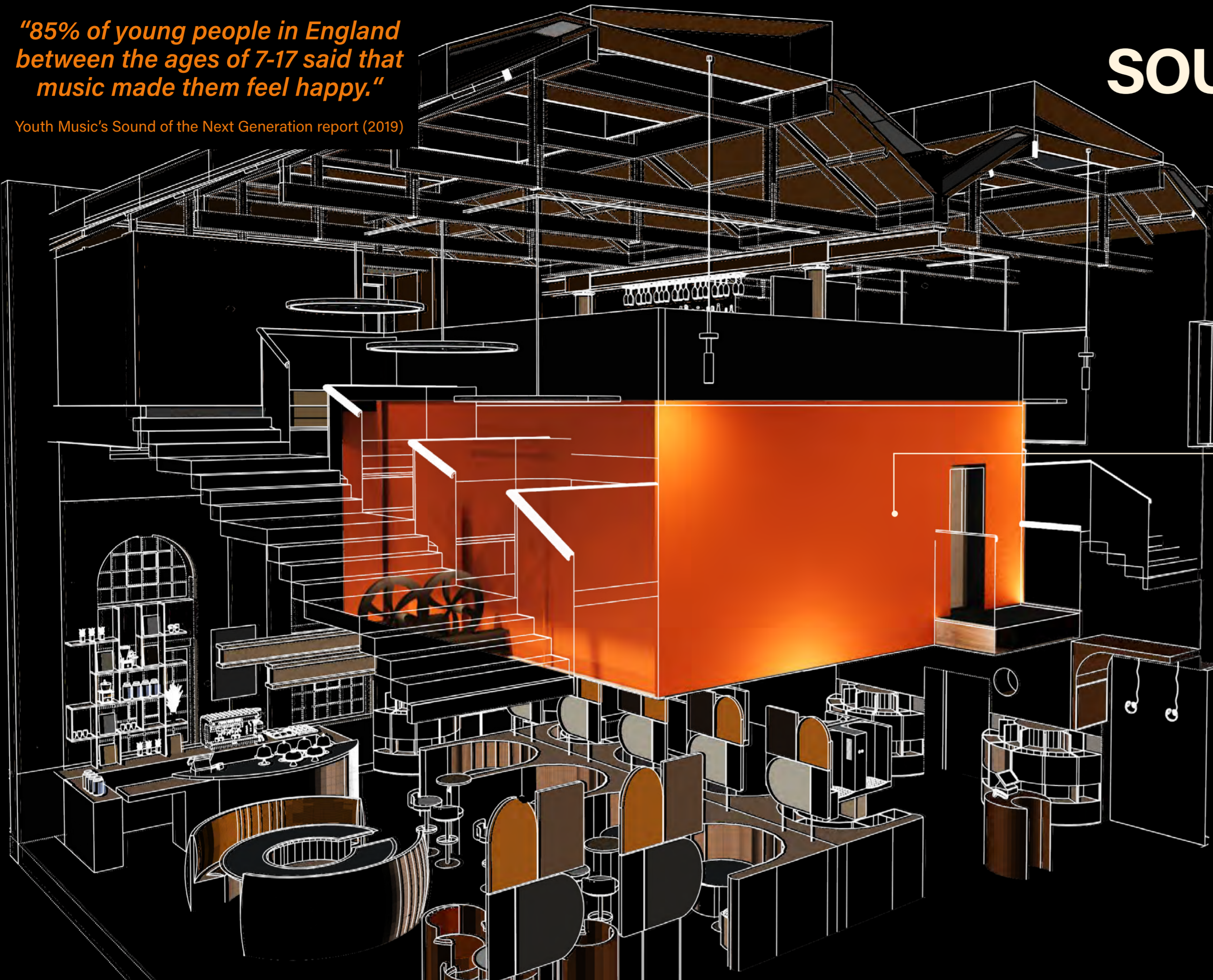
"85% of young people in England between the ages of 7-17 said that music made them feel happy."

Youth Music's Sound of the Next Generation report (2019)

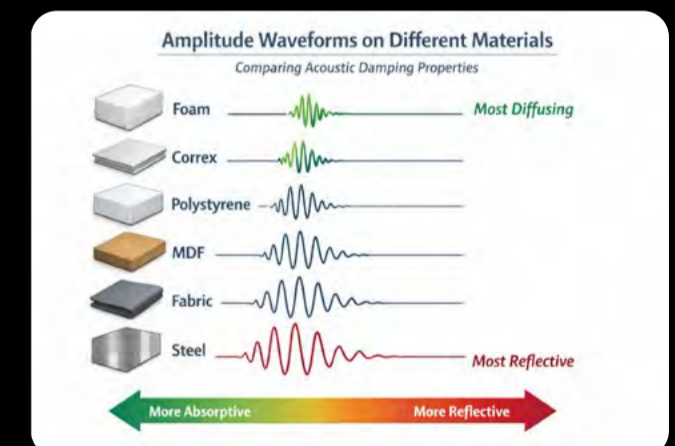
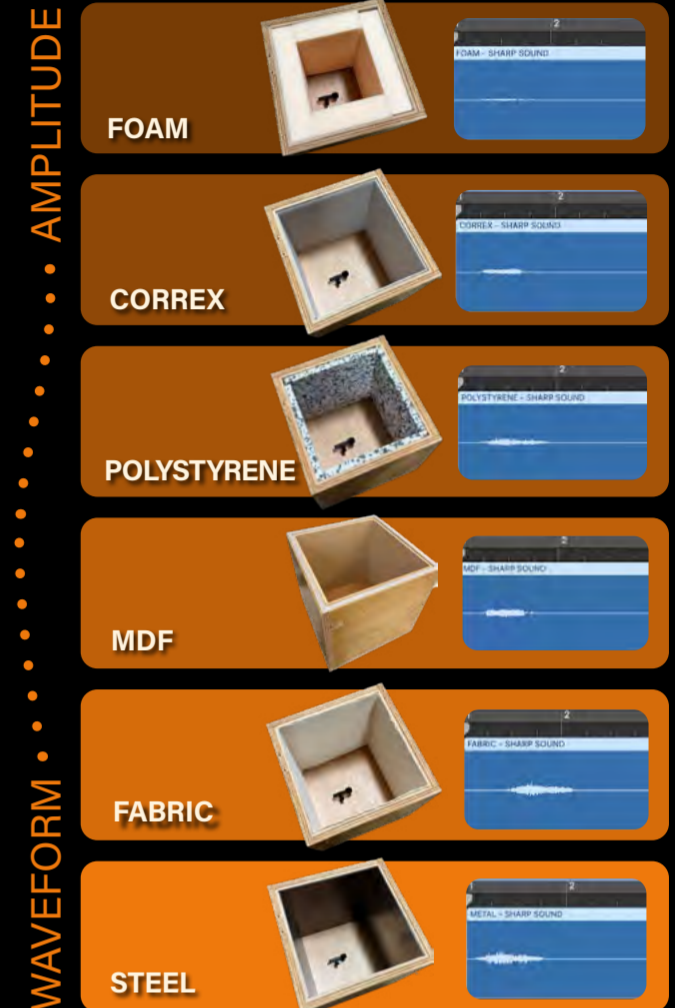
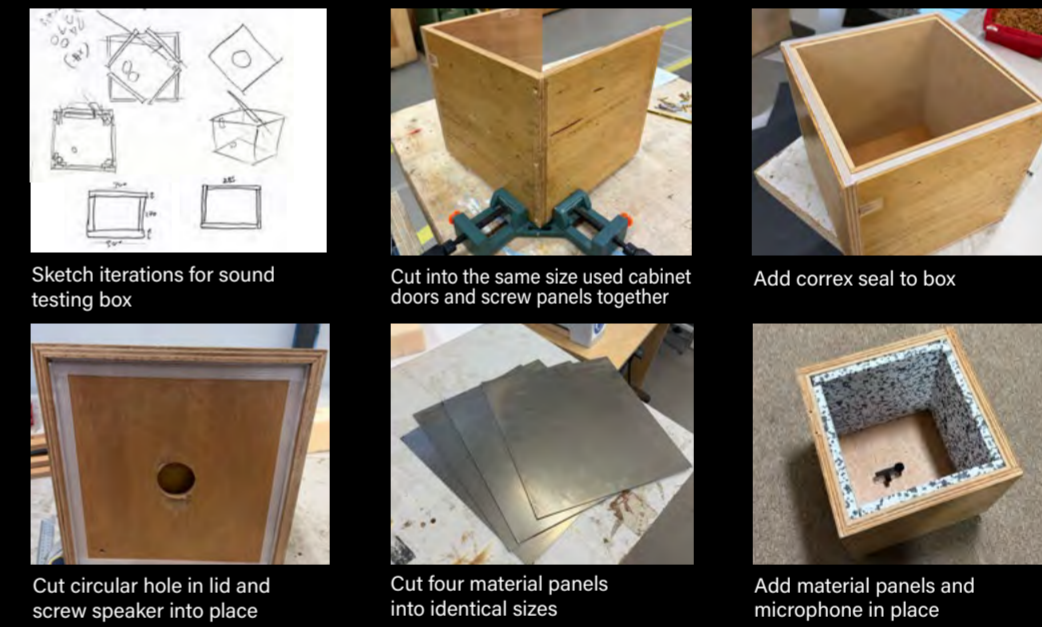
# SOUND TESTING BOX

SCAN THE QR CODE FOR A VIDEO OF MY FINDINGS

These findings help inform material specifications and demonstrate the impact different materials can have within various spatial environments



The recording studio conceptually symbolising the sound testing box, a designated space to create music



Intrigued by the acoustic strategies used to secure sound clarity and reduce noise in designated spaces, particularly recording studios, I aimed to recreate similar conditions in order to test the effects myself. I investigated how different types of sound, specifically a sharp impulse sound and white noise, interacted with various materials and how these interactions were represented in the resulting waveforms.

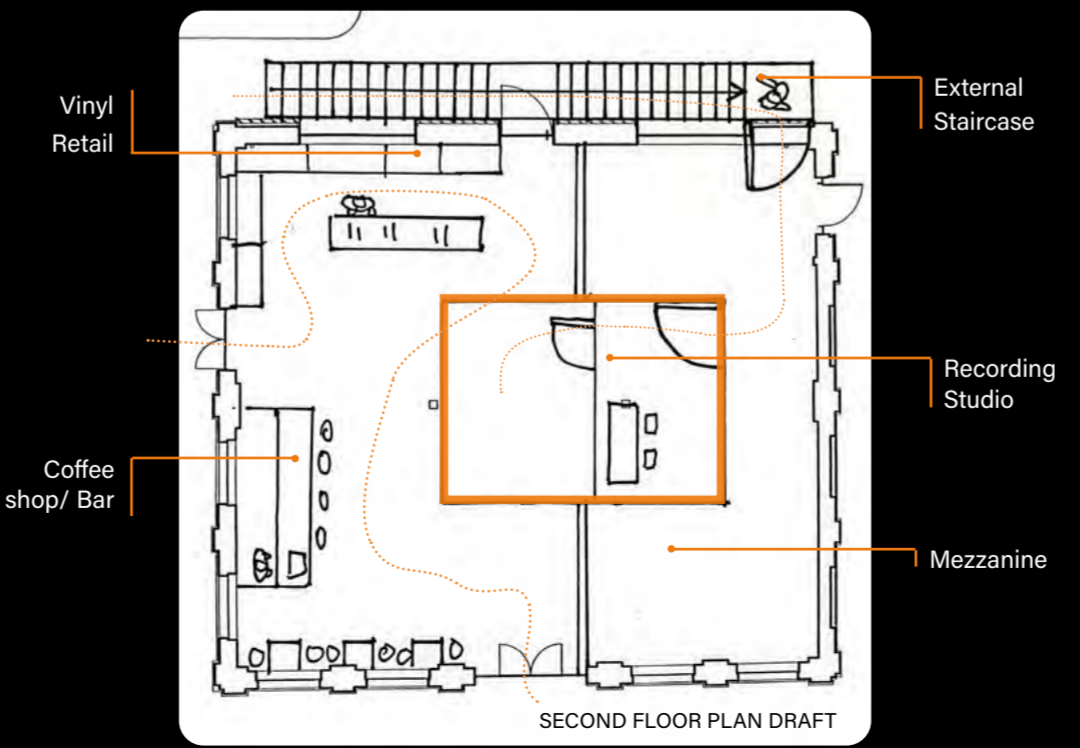


Strategically positioning the recording studio as a suspended volume from the second floor establishes it as the primary focal point, creating a sense of significance and presence within the space. This feature operates not only as a physical centrepiece but also as a symbolic one, representing the prioritisation of young people aged 11-25 within the design.

The concept draws from the sound-testing enclosure developed during the schematic phase, translating it into a functional architectural element—a dedicated space for music creation and experimentation. As a prominent 'big object', the recording studio highlights the core social enterprise initiative, emphasising the value placed on providing free youth access and tuition, and reinforcing the project's commitment to supporting youth creativity and development.

- SPACIAL STRATEGY ADVANTAGES**
- SUSTAINABILITY DUE TO THE WASTE REDUCTION
  - CULTURAL VALUE DUE TO THE HISTORICAL PRESERVATION
  - SPACE UTILIZATION ADDS EXTRA FLOOR SPACE
  - VISUAL CONTRAST COMPLEMENTS THE ORIGINAL AUTHENTIC MATERIALS

# BIG OBJECT



**ACOUSTIC ENHANCING & SUSTAINABLE MATERIALS**

- Angled and curved surfaces deflect sound waves
- Sound absorbing ceiling creates a calming, welcoming environment
- Timber wall panelling adds warmth while contributing to sound reduction
- Multiple levels offer designated spaces for different activities
- Sound absorbing flooring to help create a warm ambience

Materials used:

- Recycled Plastic Felt
- Coconut Fibres
- Protective Coatings Green Coat
- MDF veneered Beech
- Hemp fibres

# SUSTAINABILITY

The coffee shop, bar and vinyl record sales fund the free tutorials

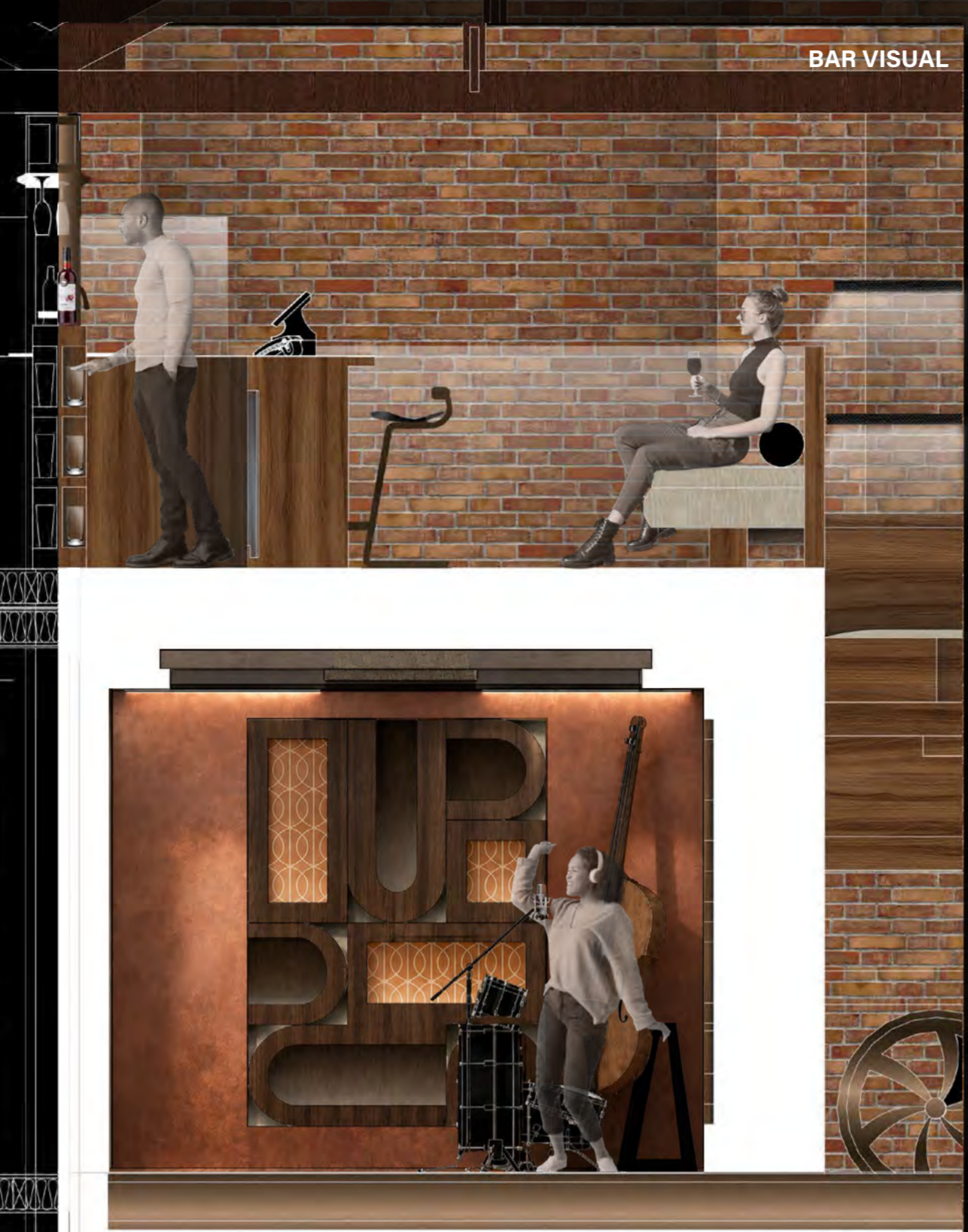


1:5 at A3  
RECORDING STUDIO  
WALL DETAIL SECTION

- 18mm W&P Plywood
- Timber C16 Kiln Dried Regularised Joist 200x75mm
- 200mm Hemp fibre insulation Acoustical Sealant
- Air cavity
- 18mm Neoprene sheet
- 15mm Acoustic Underlay
- Coffered ceiling structure
- LED strip lighting 30mm



A thick recording studio wall provides high-level sound isolation, preventing sound from escaping the studio and improving noise reduction. This is achieved through a "room within a room" construction technique as shown in the drawing.



BAR AND RECORDING STUDIO  
DETAIL SECTION 1:20 at A3

# SOCIAL ENTERPRISE



BAR BOOTH SEATING

Acoustic ceiling panels with integrated lighting provide sound absorption within the bar booth areas, creating a private and acoustically controlled environment. This enhances comfort while reinforcing an intimate social setting. Bronze drinks tables provide a functional surface while complementing the warm material palette of the space. Over time, natural staining and patination enhance the material's character, contributing to a textured and authentic aesthetic. LED lighting continues along the base of the balustrades and staircases to the second floor, providing functional illumination and intuitive wayfinding throughout the space.



COFFEE SHOP

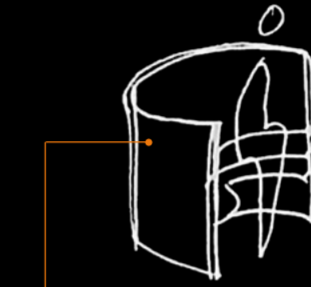
A continuous seating unit surrounds and integrates with the table, encouraging users to interact and share the space, fostering a cohesive and unified environment. Stools are positioned at the ends of booths to encourage interaction as users face one another. This strategic design aims to break down social barriers between different demographics. Acoustic panels are placed between the coffee shop and vinyl record store to create distinct functional zones while maintaining visual and spatial continuity. Their sound absorbing properties contribute to noise reduction, particularly in areas designated for conversation.



Arch walkway



'D' form wall feature

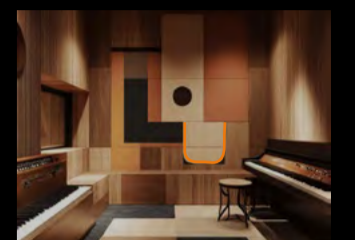
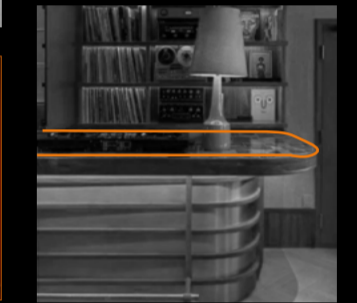
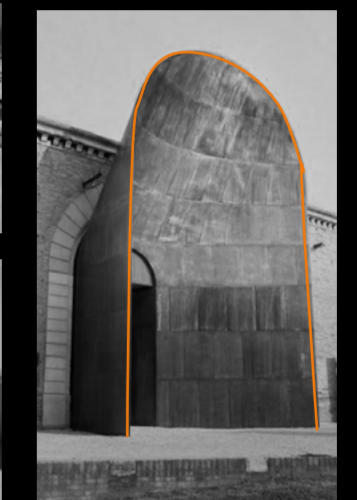


Curved seating



VINYL & SLEEVE

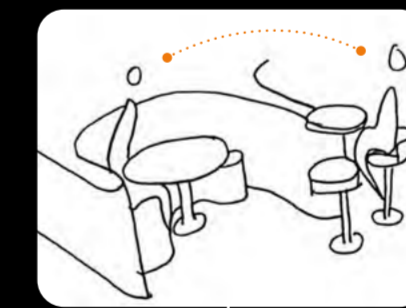
JUKEBOX



The musical design language of a jukebox and a vinyl record emerging from its sleeve inspires the narrative of this project. The combination of rectangular forms and semi-circular forms creates a new unified geometry, reflecting the concept of merging communities and bringing separate elements together as one. This 'D'-inspired design narrative guides the approach throughout the scheme.

## DESIGN INSPIRATION

Tailored material specifications create a comfortable and inviting hospitality environment that balances intimacy with openness. Through the use of acoustically enhanced lighting, warm material finishes, and contrasting bold accents of orange, the space feels carefully considered, making users feel valued and welcomed.



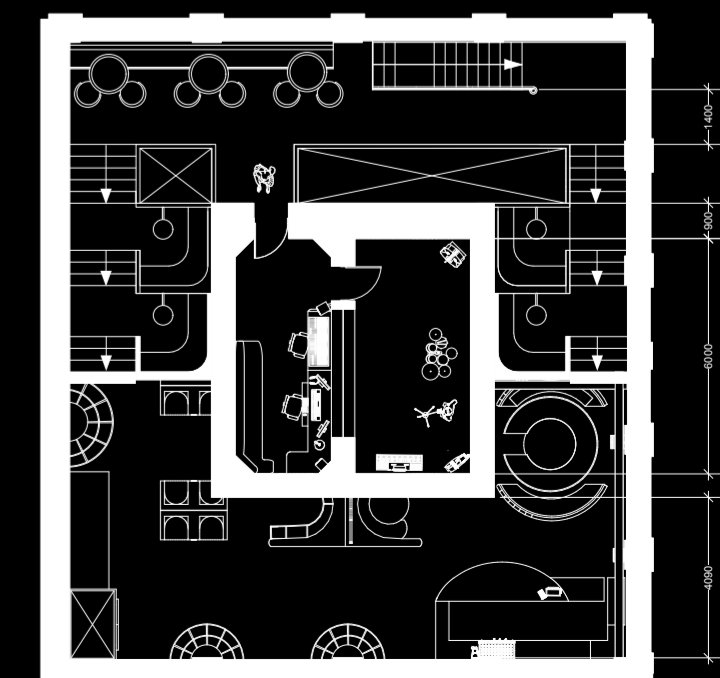
The curved design language continues into the coffee shop as seating booths, with seating positioned at the end of each arch. Their close proximity and shared orientation encourage moments of connection between customers.



Material board

### SUMMARY

The design aims to create an inclusive and cohesive environment that encourages social interaction among diverse user groups. Through the integration of open-plan spatial planning, strategically configured communal and interactive seating, and acoustically considered zoning, the space promotes engagement while maintaining comfort and functionality. The overall approach seeks to balance connectivity and separation, encouraging a welcoming atmosphere that supports both social exchange and individual experience.

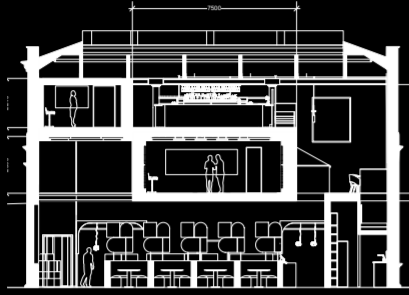


FIRST FLOOR PLAN

## CONCEPTUAL AIM

An eye-catching vibrant orange volume hangs centre stage within the interior, conceptually representing the sound box while placing the social enterprise initiative at the forefront of the design. The suspended form draws users into the environment, creating an immersive and experiential atmosphere that transports visitors into the exciting ambience of the space. Acting as both a visual focal point and social catalyst, the installation encourages gathering, conversation, and shared experiences, reinforcing the project's community-driven ethos.

Section BB



## 1 INTERACTIVE MUSIC

Key areas offer immersive music listening experiences, including zones where headphones are suspended from above, allowing customers to stand, listen, and dance. With three headphones positioned in a row, users are encouraged to engage with music in close proximity to others. This creates an experiential environment that fosters inclusivity, encouraging interaction between different demographics and promoting a shared musical experience.

## 2 IMMERSIVE MUSIC

Individual cocooned seating provides an immersive listening experience, with speakers positioned on either side of the user's head. While offering a sense of personal immersion, the seating is arranged in close proximity to others, creating a shared experience. This helps break down expected social barriers, encouraging inclusivity and connection between users.

## 3 TURNTABLE COVE

Two booths offer integrated vinyl record turntables, allowing customers to play a record of their choice and listen using provided headphones. These compact booths encourage users to share the space, creating opportunities for shared listening experiences. This not only promotes interaction but also provides less affluent individuals with access to music in an inclusive and accessible way.

## 4 SOCIAL BOOTHS

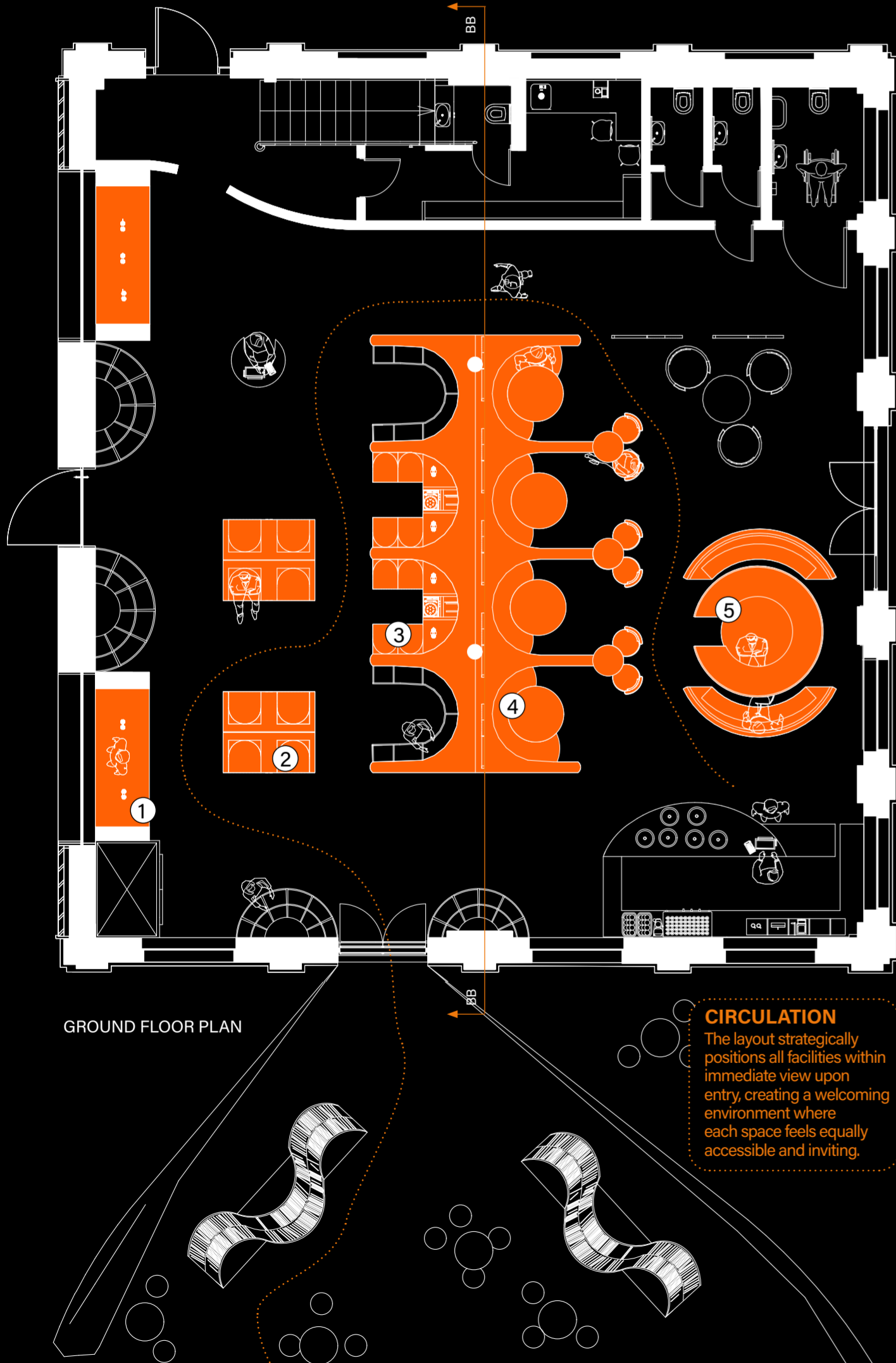
Booths with curved seating are directed towards high tables positioned at the end of each structure, encouraging moments of interaction between different demographics who may not typically engage. This not only cultivates a sense of inclusion but also makes users feel welcomed within the space.

## 5 SOCIAL SEATING

Circular seating creates a more communal rather than private experience. The layout allows users to sit on both sides of the table, while additional groups can occupy adjoining sections. This design encourages interaction through close proximity and shared use of the space, nurturing a collective experience among customers.



GROUND FLOOR RETAIL WEST FACING



GROUND FLOOR PLAN

### CIRCULATION

The layout strategically positions all facilities within immediate view upon entry, creating a welcoming environment where each space feels equally accessible and inviting.

# EXPERIENTIAL RETAIL



GROUND FLOOR RETAIL EAST FACING

Vinyl record display shelving enables users to easily browse and engage with products ready to purchase



# VINYL SWAP LIBRARY



An interactive and inclusive vinyl swap library is positioned on the piazza outside the main threshold. Designed to appeal to less affluent individuals, it offers a welcoming space to sit beneath the canopy. Used vinyl records are displayed within curved compartments, allowing users to easily browse and swap records. This not only encourages those who may not own vinyl to engage with the medium, but also promotes inclusivity, ensuring all users feel welcomed and involved.



## OUTDOOR FOCAL FEATURE

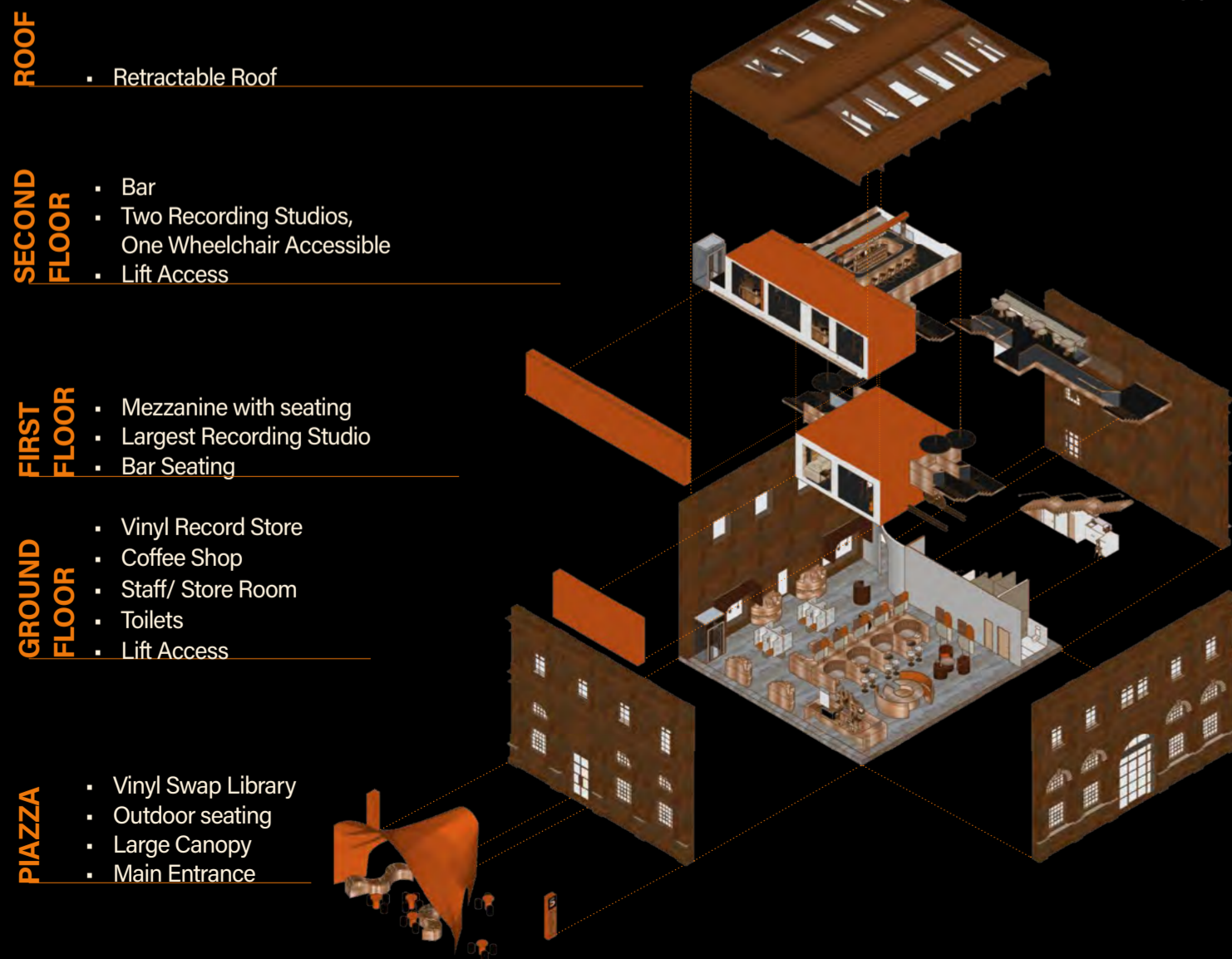
A large abstract canopy extends from the main entrance across the piazza, finished in the primary branding colour to attract passers-by and draw them into the space. Coordinated orange and black outdoor furniture reinforces the visual identity, creating a welcoming and vibrant environment that encourages engagement. Branded orange pillars positioned around the site display the company name and logo, strengthening identity and visibility. Their illuminated finish enhances wayfinding while contributing to the contemporary aesthetic of the project and subtly guiding users towards the main entrance from multiple access points.



# BRANDING

- 1 CANOPY**  
A large canopy positioned within the piazza provides shelter for the vinyl swap library, protecting the products while also offering cover for users. The arched form incorporates cut-out walkways, allowing access from all sides. Its vibrant orange fibreglass finish creates a visually striking feature that attracts passers-by and encourages exploration.
- 2 OUTDOOR SEATING**  
Flexible seating and tables, constructed from durable fibreglass, provide adaptable arrangements that encourage user interaction. These movable elements invite engagement with the space and promote inclusivity across different demographics.
- 3 VINYL SWAP LIBRARY**  
Curved vinyl display units maximise browsing space and facilitate the exchange of records. The timber construction aligns with the overall material palette, while separate lids provide security during non-operational hours.
- 4 BRANDING**  
The consistent use of vibrant orange establishes a strong visual identity throughout the design. Branded plinths, featuring the company name and logo are positioned at key points around the site, reinforcing brand presence and ensuring a cohesive design language.

ISOMETRIC DRAWING OF FINAL DESIGN



# SOCIAL INCLUSIVITY

SHOREDITCH HIGH STREET