

STEEL WARRIORS



Transforming Violence into Empowerment

This project aims to design Steel Warriors' first-ever indoor gym in Shoreditch, transforming the charity's well-known outdoor calisthenics spaces into an interior environment that feels just as powerful, raw, and inspiring. Steel Warriors is a social-impact organisation that turns confiscated knives into street workout equipment, helping young people build strength, confidence, and community.

The focus for this site is to use Shoreditch's gentrified community to help raise money for the charity to build more Steel Warriors sites to expand their ideologies to help people in underserved communities.

By incorporating the concept of steel Warriors, the interiors will feature activities that help strengthen the body such as calisthenics, dance, and boxing.

Why is this important?

53,047 – Number of Knife Crime in the UK in 2024 - 2025

18% – Of knife crimes committed by young people aged 10 - 17



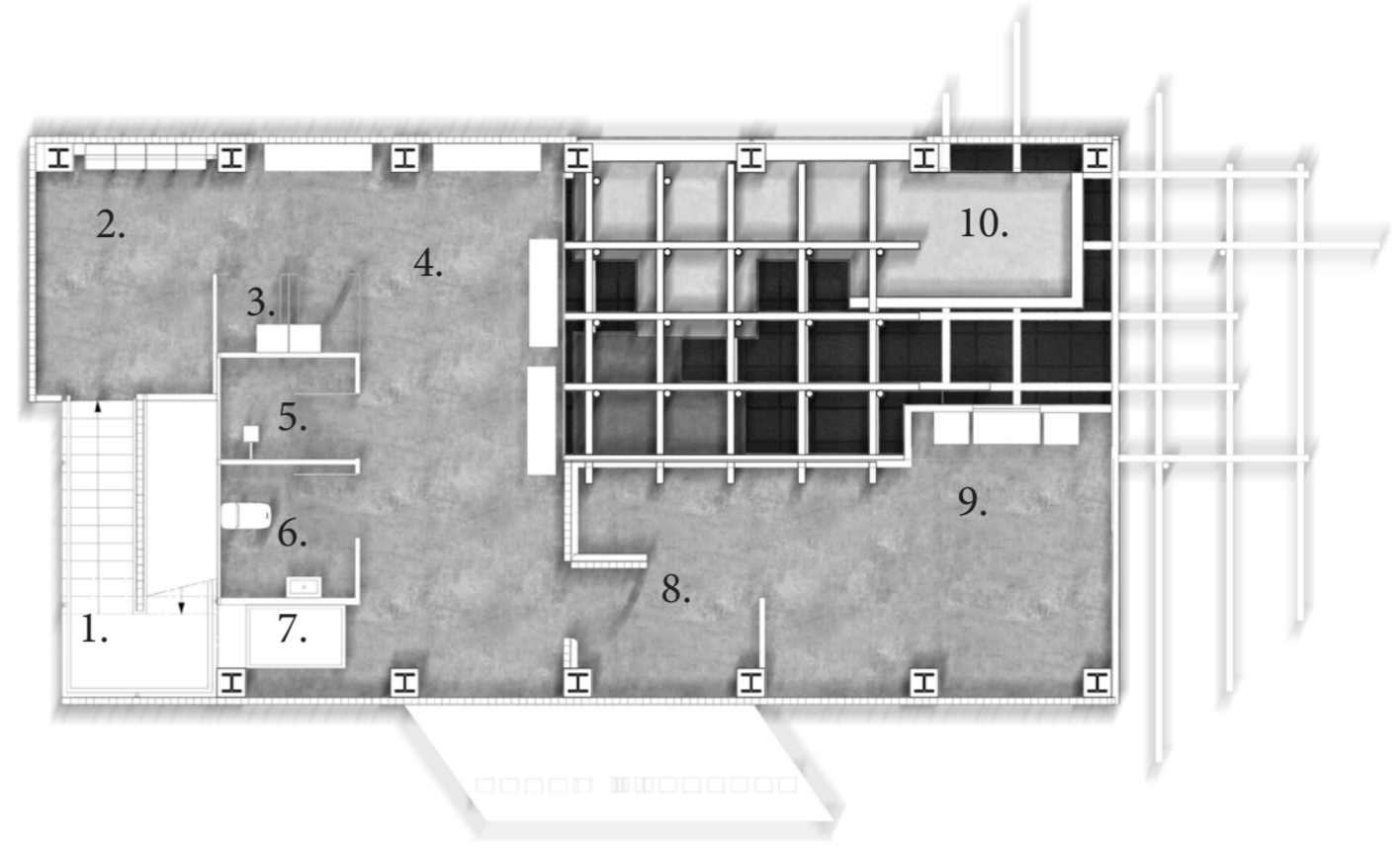
POLICE KNIFE AMNESTY

MELTED

REFORMED INTO STEEL BARS

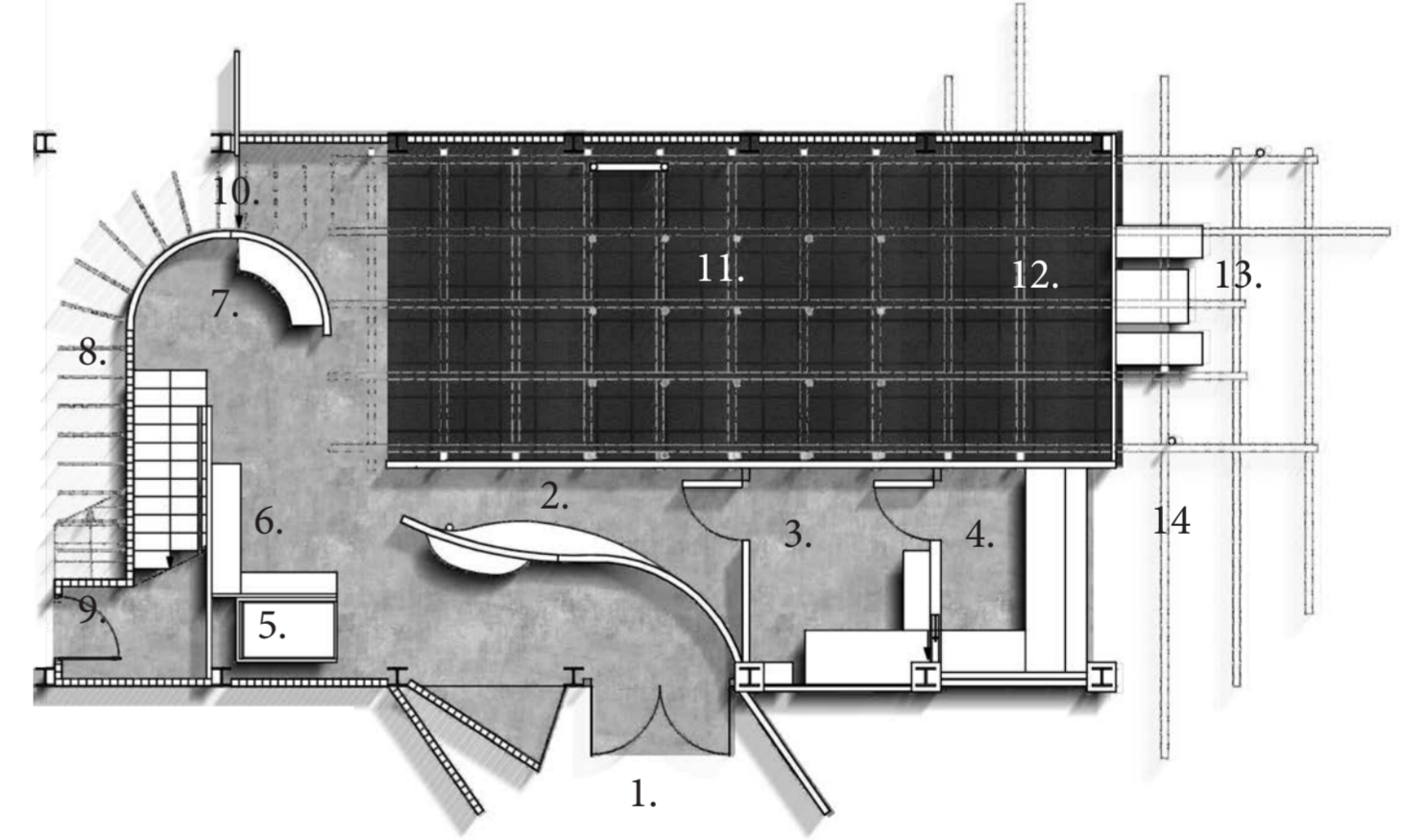
ASSEMBLED ON SITE

TRANSFORMING LIVES



1st Floor Rendered Plan

- 1. Stairs
- 2. Locker Area
- 3. Changing Rooms
- 4. Benches and View of Scaffolding through Window
- 5. Shower Room
- 6. Bathroom
- 7. Platform Lift
- 8. Hidden Door
- 9. Therapy Area
- 10. Scaffolding Sitting Area

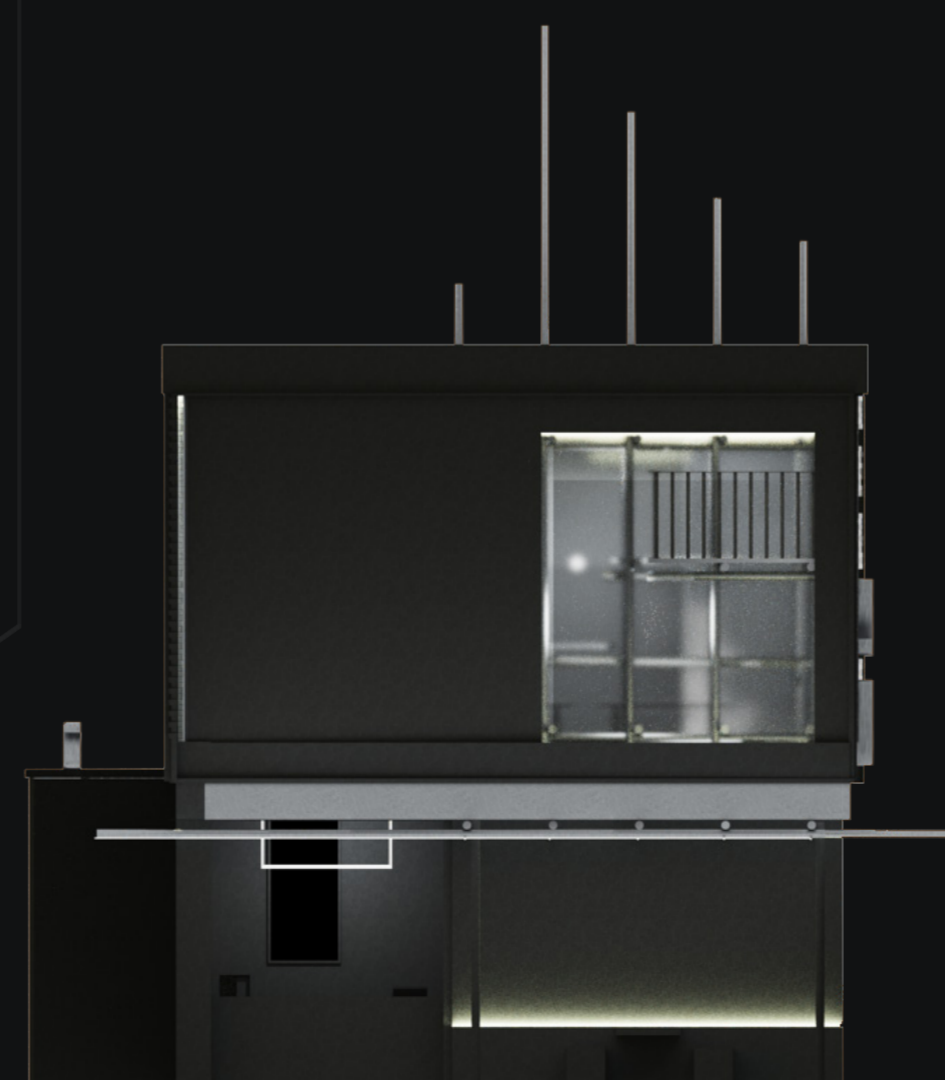


Ground Floor Rendered Plan

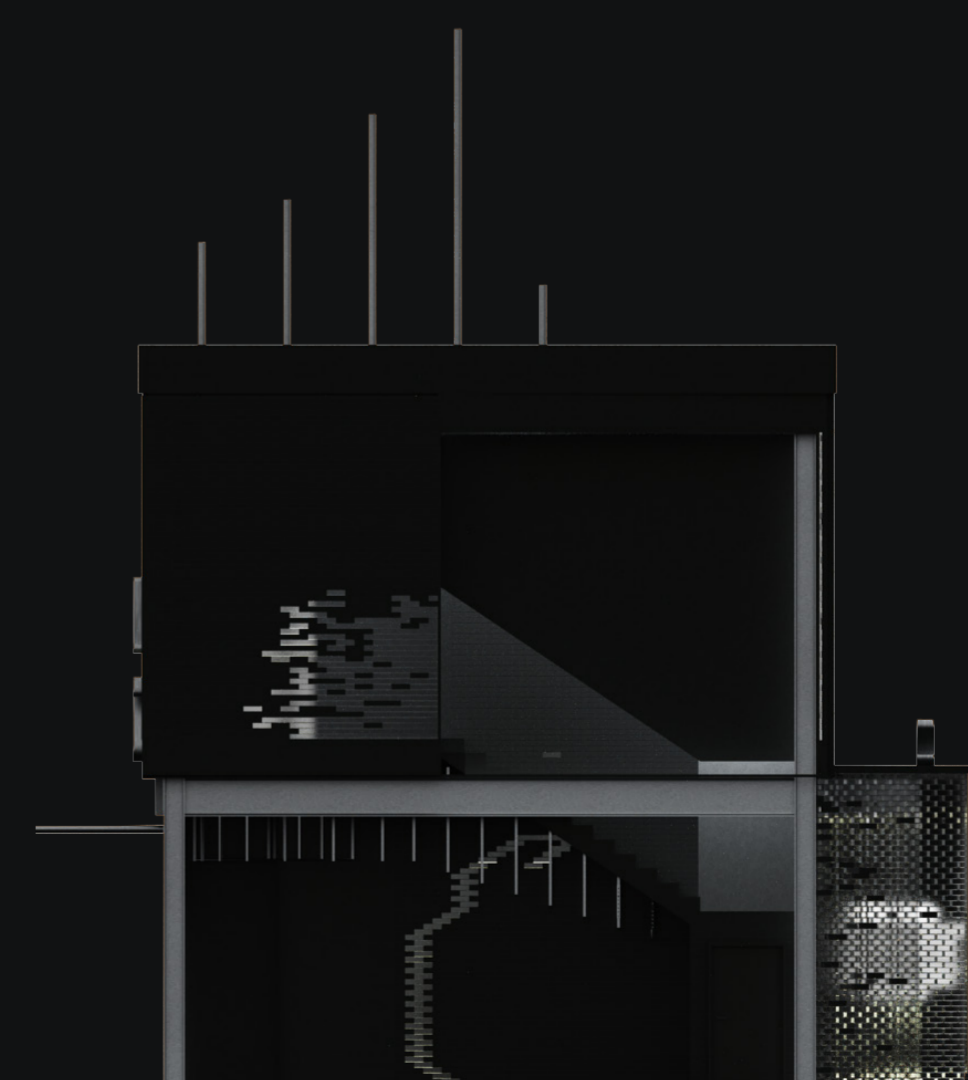
- 1. Entrance
- 2. Reception
- 3. Drink Preparation Area
- 4. Drink Serving Area
- 5. Platform Lift
- 6. Merchandise Area
- 7. Sitting Area (underseat storage)
- 8. Monkey Bars
- 9. Storage Room
- 10. Sliding Doors (alternative entrance)
- 11. Multi-function Space (boxing, yoga, dance...etc)
- 12. Scaffolding for Climbing
- 13. Drink Sitting Area
- 14. Drink Shop



The site is a flexible area for body improvement activities (Calisthenics, boxing, dance)

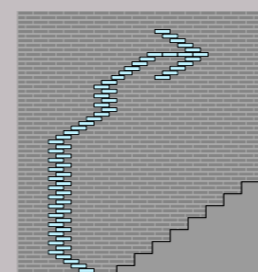


Rendered East Elevation



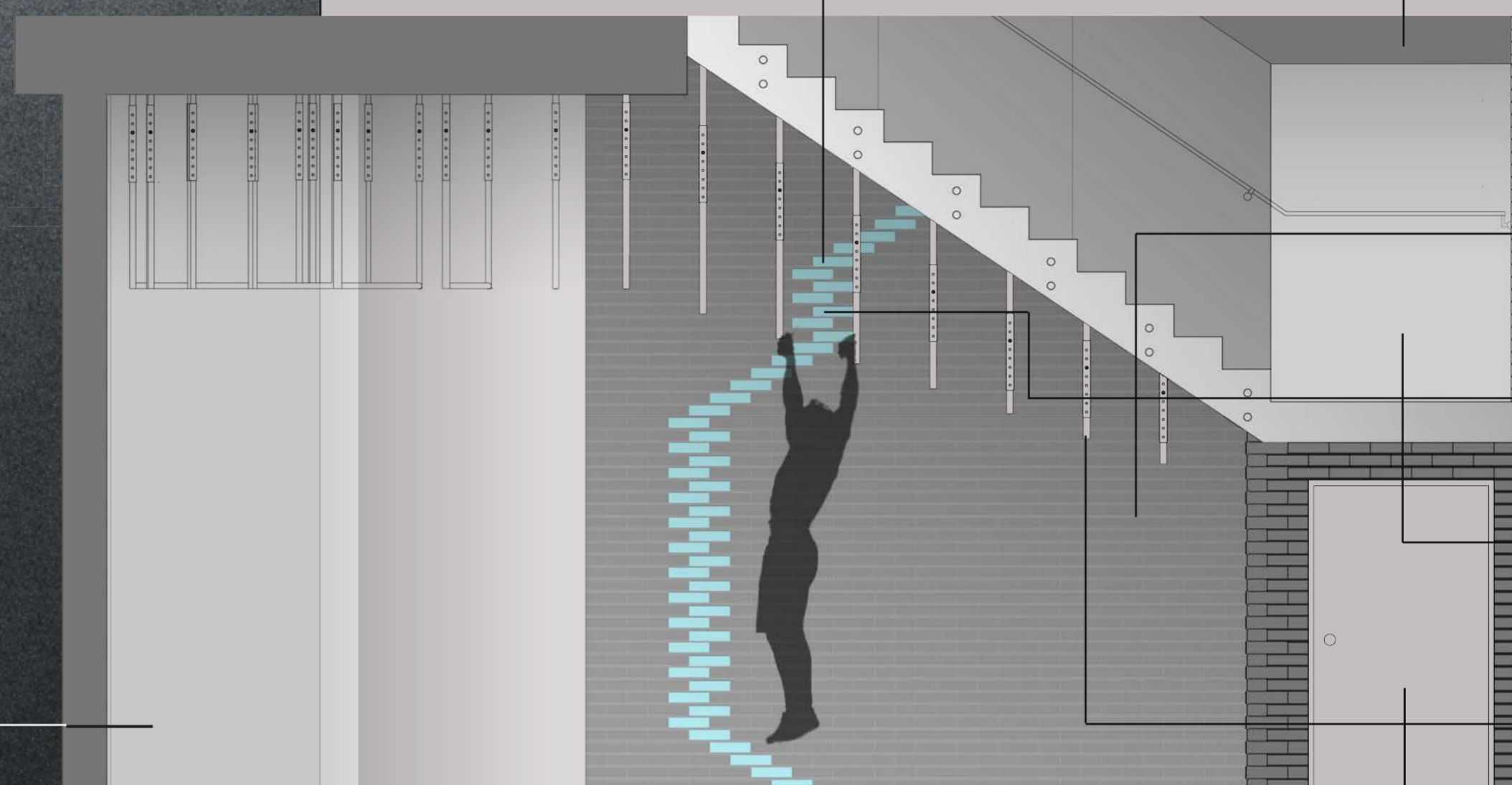
Rendered West Elevation





Full Brick Pattern

Detail Section



Concrete
Name: Blue Circle Quick set
Concrete, 20kg Bag - Ready mixed
Supplier: B&Q
Recyclable

Concrete Bricks
Name: 140mm Celcon H+H Standard Grade Plain Face 3.6N Block
Supplier: Materials Market
Recyclable

Cast Glass Bricks:
Name: Vistabrik 483 Clear Glass Brick
Dimensions: 215 mm (length) x 102.5 mm (width) x 65 mm (height)
Supplier: Materials Assemble
Recyclable and Sustainable

Glass Pane
Name: Point Fixings
Supplier: Origin Architectural
Recyclable and Sustainable

Rubber Grip
Name: Foam Grip Tubing Handle Grips Non-slip for Fitness Handle Support
Supplier: Harfington
Recyclable and Sustainable

Sliding Door Closed

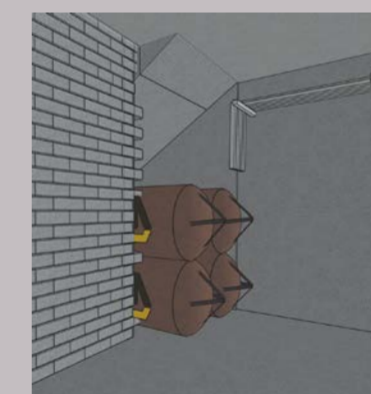


Sliding Door Open



Sliding Doors (Alternative Entrance)

This showcases the doors opened and closed during opening and closing hours. When the door is opened people can climb the bars from the stairs all the way into the workout space. (since it is customizable staff members can create unique challenges for people to do)



Storage Room

Punching bags should be put horizontally for the maximum storage



Calisthenics Space



Boxing Space



No Equipment Space



Therapy Room: Counselling and Physio



Reception



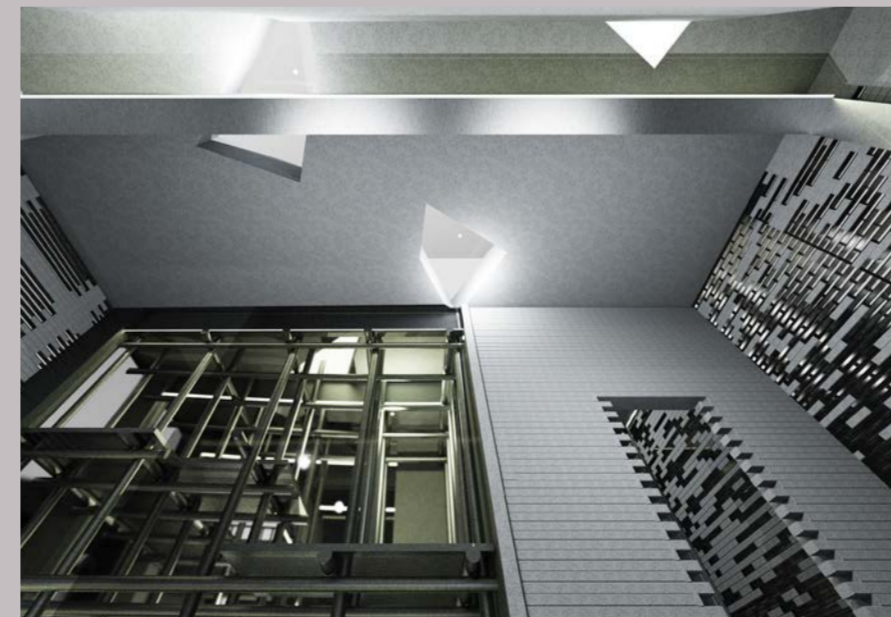
Upper Scaffolding Area

- Encouraging physical vertical movement in the space
- A space that can only be accessed by climbing



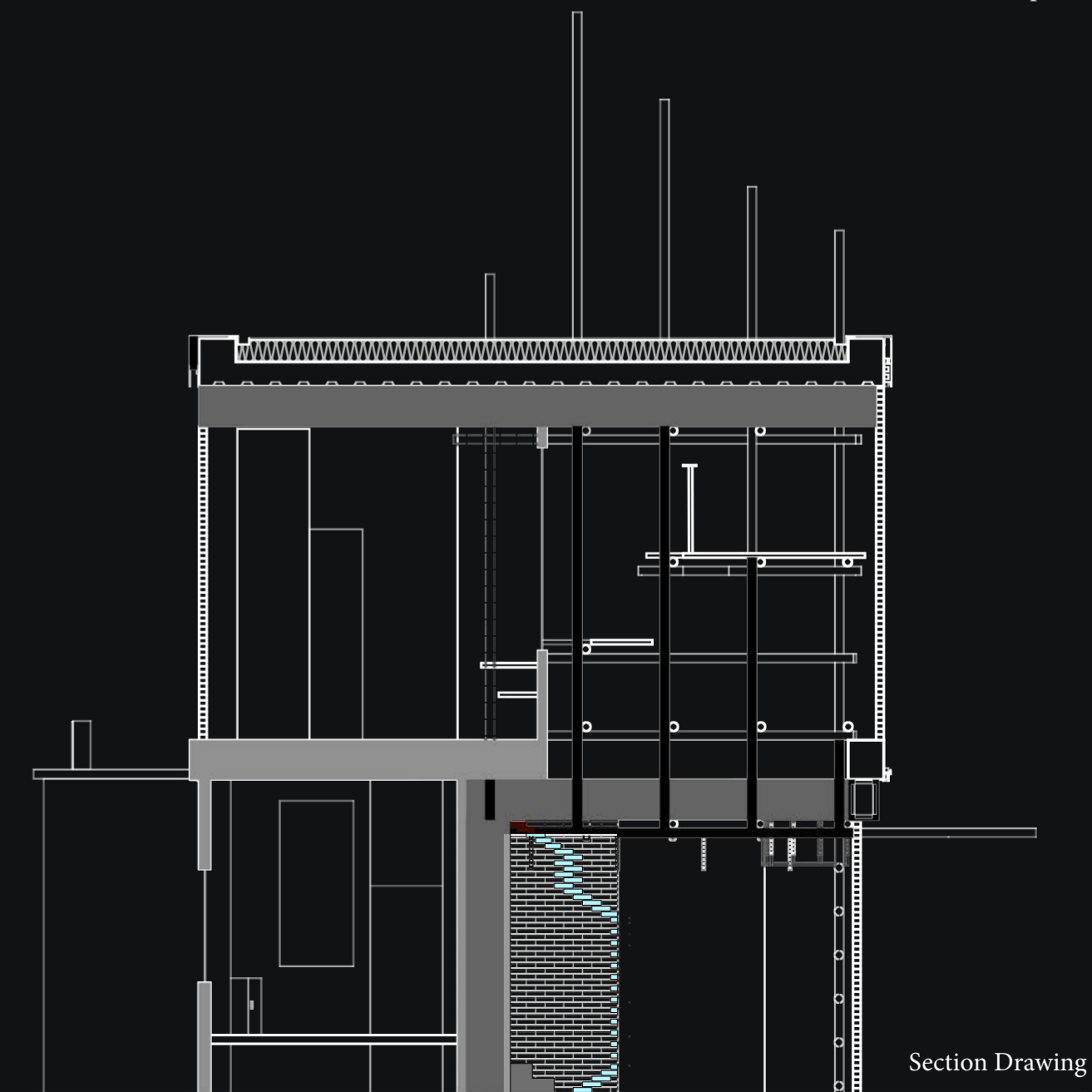
Merchandise Area

This render illustrates the merchandise area positioned directly beside the reception to allow easy public access and convenient payment. Its placement ensures that all visitors pass through the space, increasing visibility and engagement with the merchandise.



Ceiling View

This render highlights the ceiling design, inspired by the concept of sheathing a knife within a large knife box. Perforated openings represent sheathed knives, with some incorporating LED panels that mimic daylight and others functioning as skylights to bring natural light into the space.



Section Drawing