

# Gradation of privacy

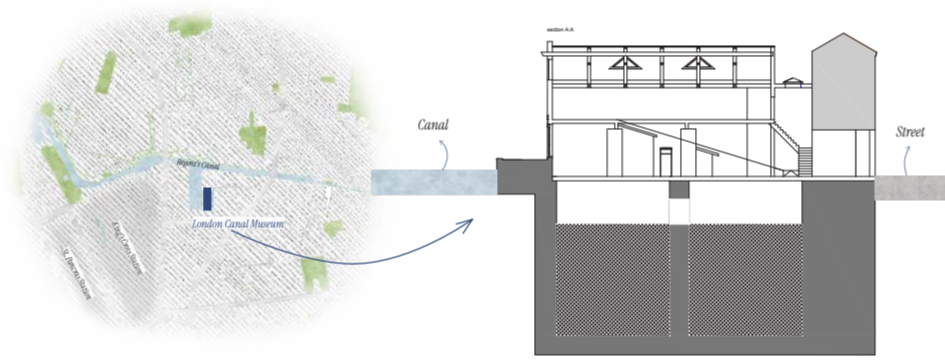
## Following Regent's Canal

The poetics of water

- tranquility
- gentle flow
- silence and echoes



This project reimagines the London Canal Museum as a sanctuary for local bargees. Grounded in meticulous site and demographic analysis, the work tackles the **lack of privacy** in boat living not through conventional walls, but by **dynamically exploiting the building's verticality**, thanks to its historic ice wells. Pioneering a volumetric "Gradient of Privacy", it shows interior architecture students how historical research, sustainable materials, and physical prototyping can merge. Ultimately, it teaches future designers a vital lesson: how to listen to overlooked communities and respond with genuine empathy and spatial poetry.



## The problem



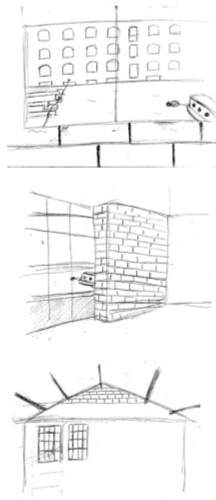
Double mooring on Regent Canal

Due to the growing popularity of London's canals, finding towpath mooring space in busy areas like Little Venice, King's Cross, or Hackney has become highly difficult. This has led to the practice of "double mooring" (or breasting up), where a boat is moored alongside another one already tied to the bank. While this solves the space shortage, it creates three major issues:

**Obstruction:** Canals are shallower at the edges (dish-shaped). Boats protruding too far into the center force passing vessels into shallow water, causing them to run aground.

**Triple Mooring:** Mooring three or more boats together is dangerous and generally prohibited, as it severely hinders evacuation or separation during fires and emergencies.

**Privacy and Noise:** Living side-by-side with neighbors leads to constant disruptions from engine fumes, wood-burner smoke, and ambient noise.



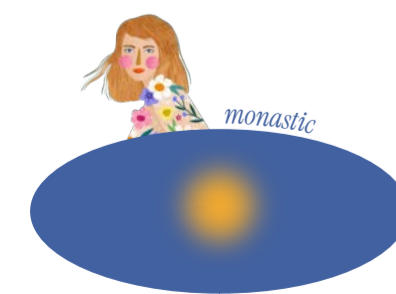
These sketches capture architectural details and the beautiful canal views from both floors. Thanks to the sliding windows, an interesting indoor-outdoor feel is achieved.

The museum's layout is quite unusual, with **one side open to the canal and the other to the street, offering many design opportunities.**

Questo luogo è un'atmosfera tranquilla, un angolo di pace in città che è così vibrante e si sente ovunque. È un'esperienza unica, bella, sorprendente, per guardare il movimento della città dall'esterno, mentre ammirate i dettagli del canal, è un'esperienza unica con un design così caratteristico per il commercio e un'atmosfera storica della città. Forse potrebbe essere interessante per il progetto recuperare parte della sua storia e tradizione, dandole un valore che merita.

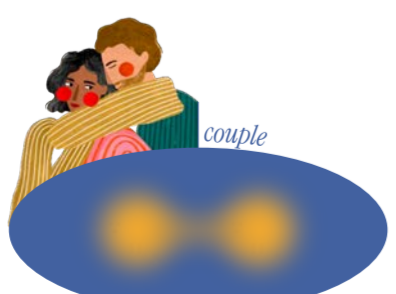
The second floor, with its pitched wooden roof, feels almost like an embrace. I felt enclosed, but not in a negative way. I can already imagine it with beautiful lighting—a romantic, private spot to spend the evening. I have no idea yet how to use the ice box, but it could be a great challenge to reopen it entirely and find a new purpose for it.

## Moments of peace



**Monastic**  
A space for a **retreat** on your own silence

- cleansing
- reading
- writing
- listening to music
- cultivating your passion



**Couple**  
A space for the **intimacy** with the one you love

- bathing
- sleeping
- cooking
- eating



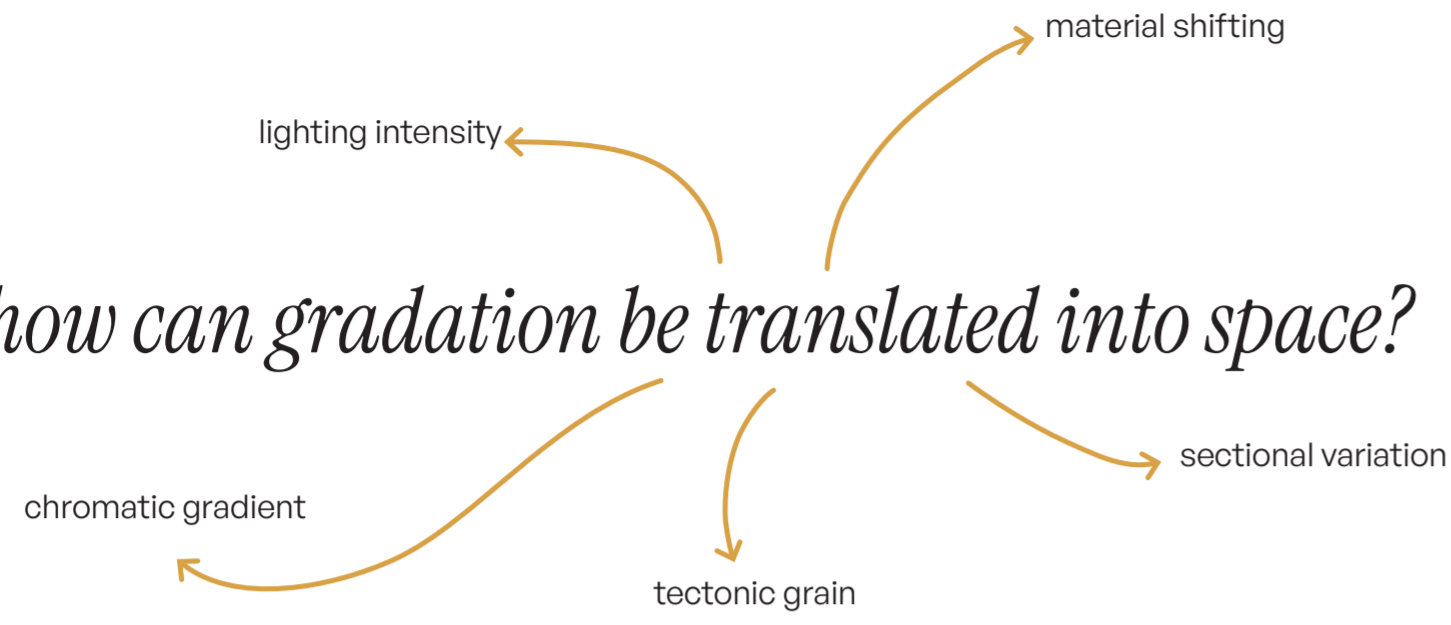
**Family and Friends**  
A space for family or friends **gatherings**

- playing games
- cooking
- eating together
- watching a movie

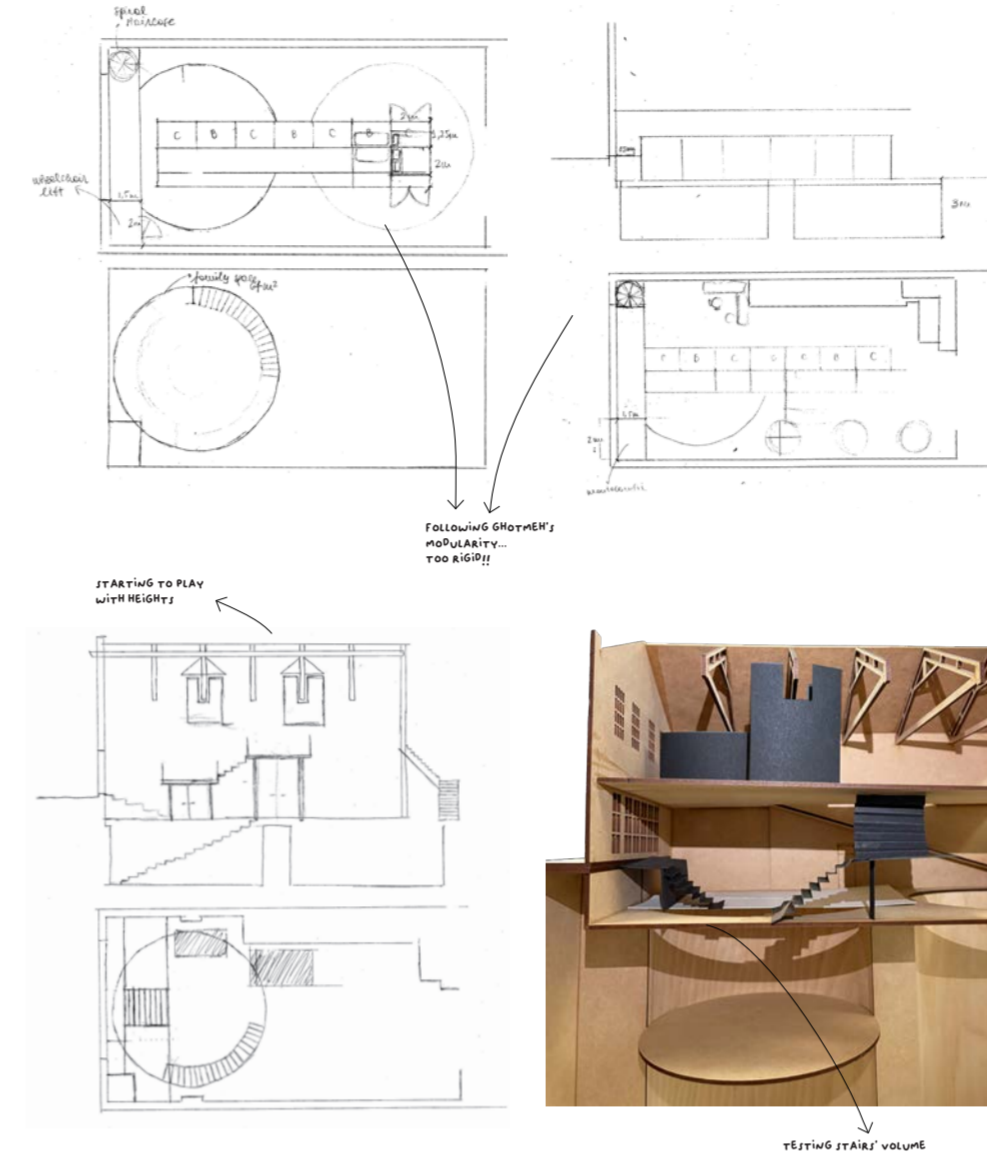


# Iteration

how can gradation be translated into space?

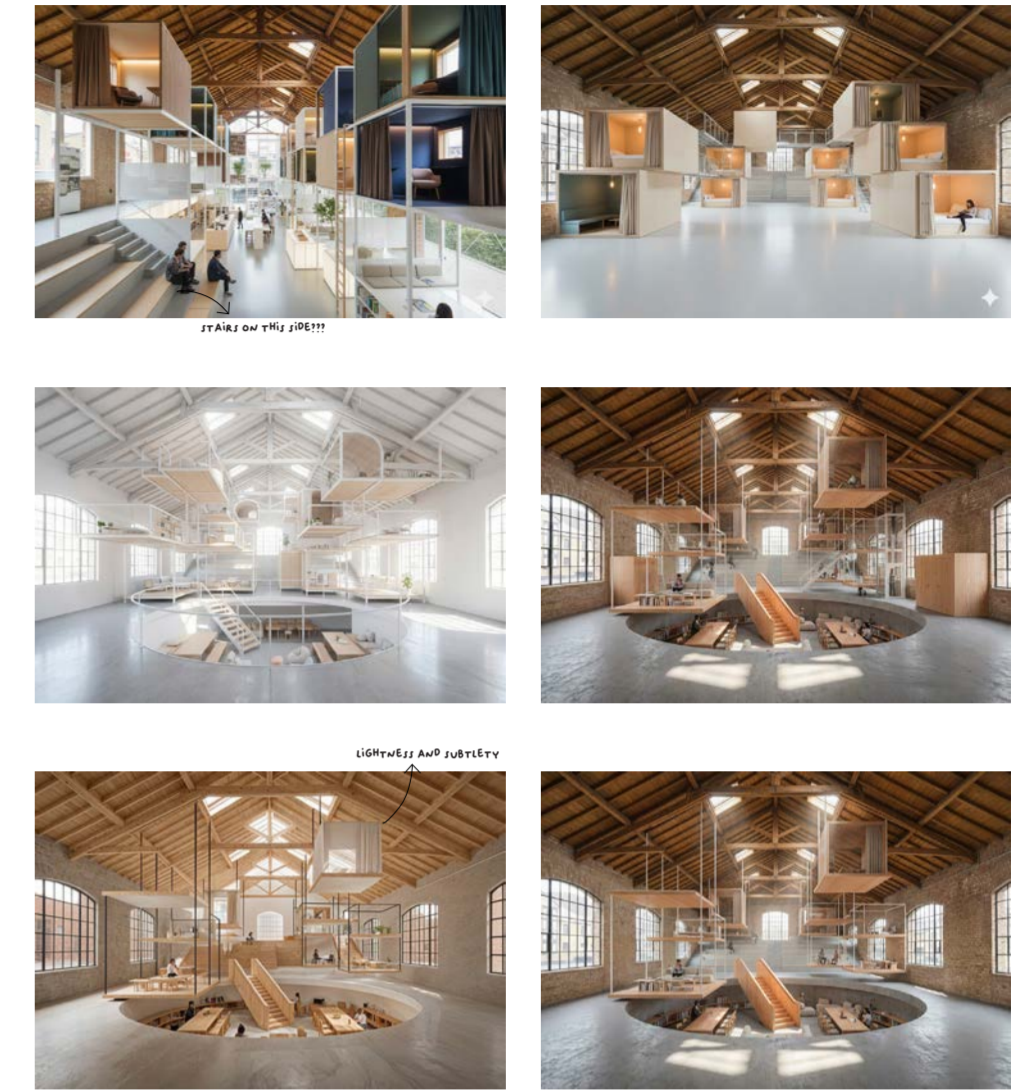


## Initial ideas



## Possible solutions

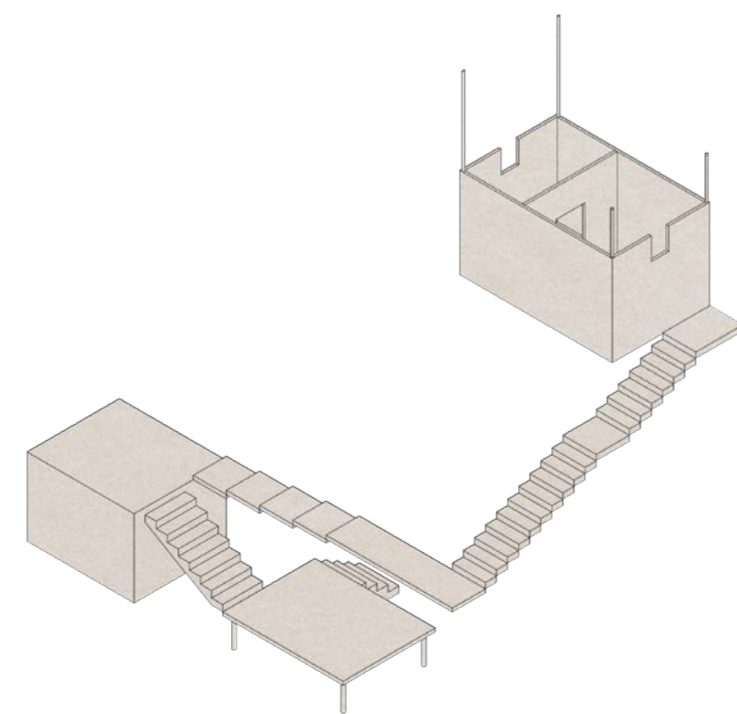
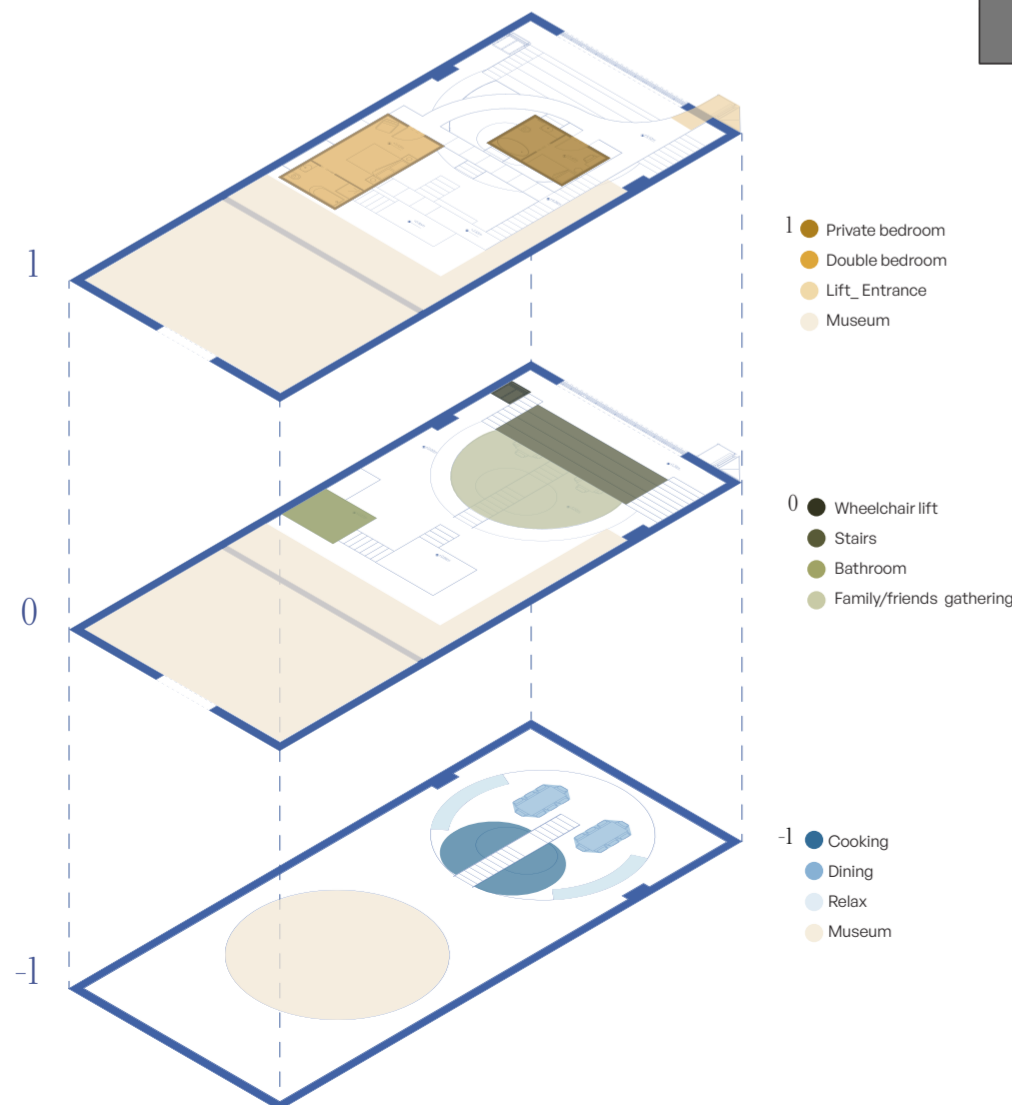
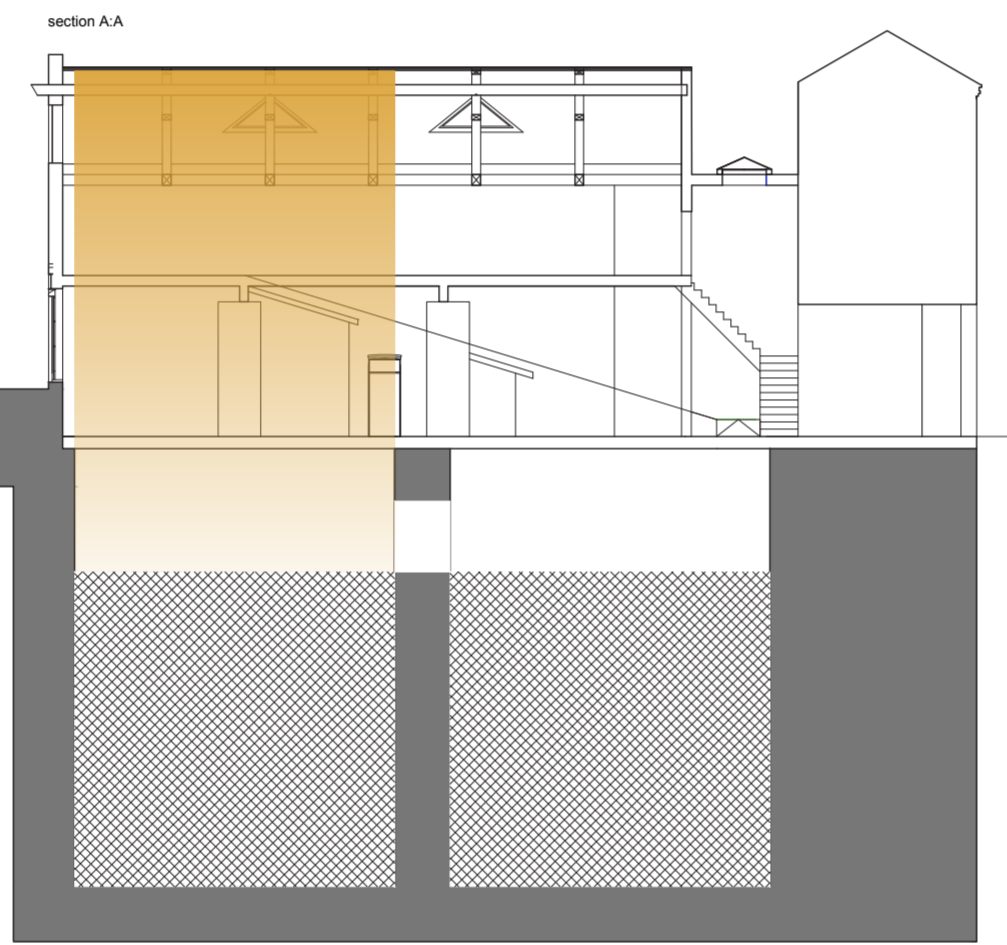
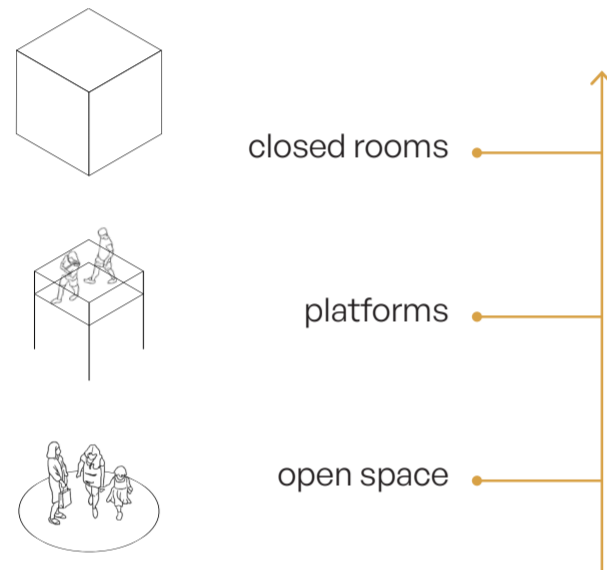
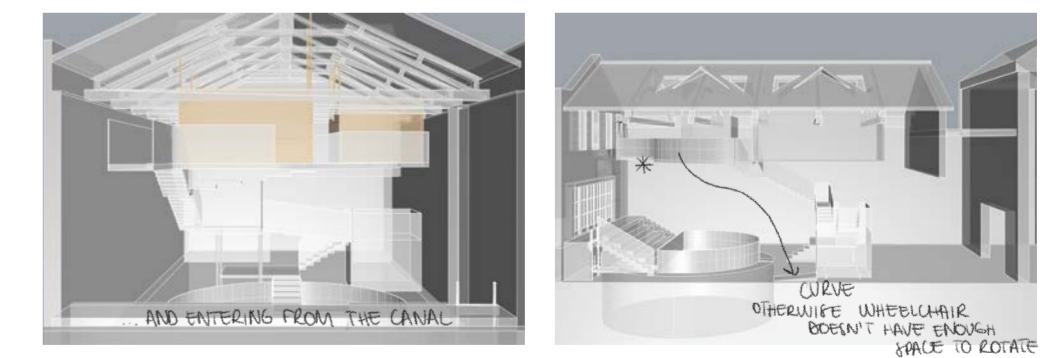
Testing with generative AI



Initial Prompt: "Generate images of potential interiors for the London Canal Museum, based on my project: a gradation of privacy. I have attached the Rhino 3D model and some interior photos, but I think you can find more on their website and online. I found it interesting to follow Fujimoto's example, using a fluid vertical development. Therefore, please create platforms for individual privacy that become progressively more enclosed the higher they are. Remove the first-floor pavement."

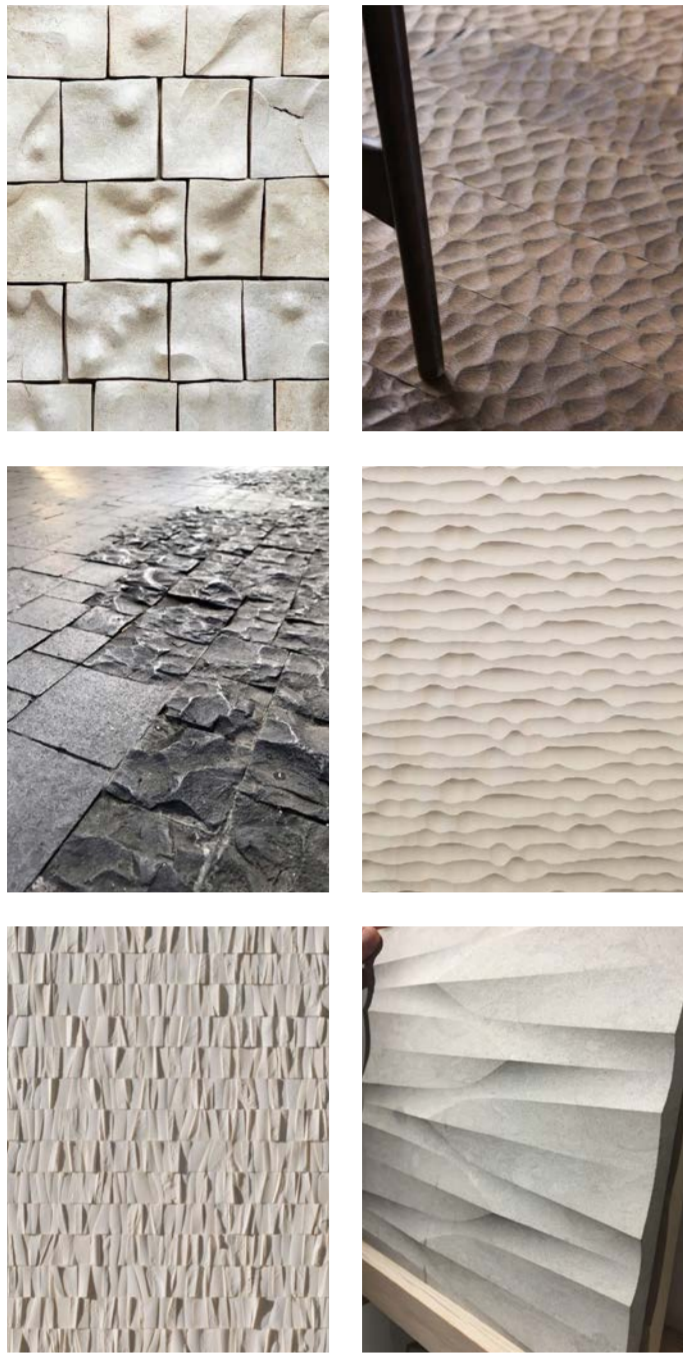
## 3D Modelling

Volumetric experimentation



# Prototype

Research and process



The guiding concept for the tile design was the **imprint of gradation**: I wanted to highlight the bathing experience of the space by creating a wavy, organic texture.

After extensive testing, I achieved the desired effect using a curved tool to sculpt the undulating surface into the clay. From this original model, I produced **both the negative and positive** molds using plaster.



*Subtle*



*Intimate*



*Tactile*

*Separating negative and positive*



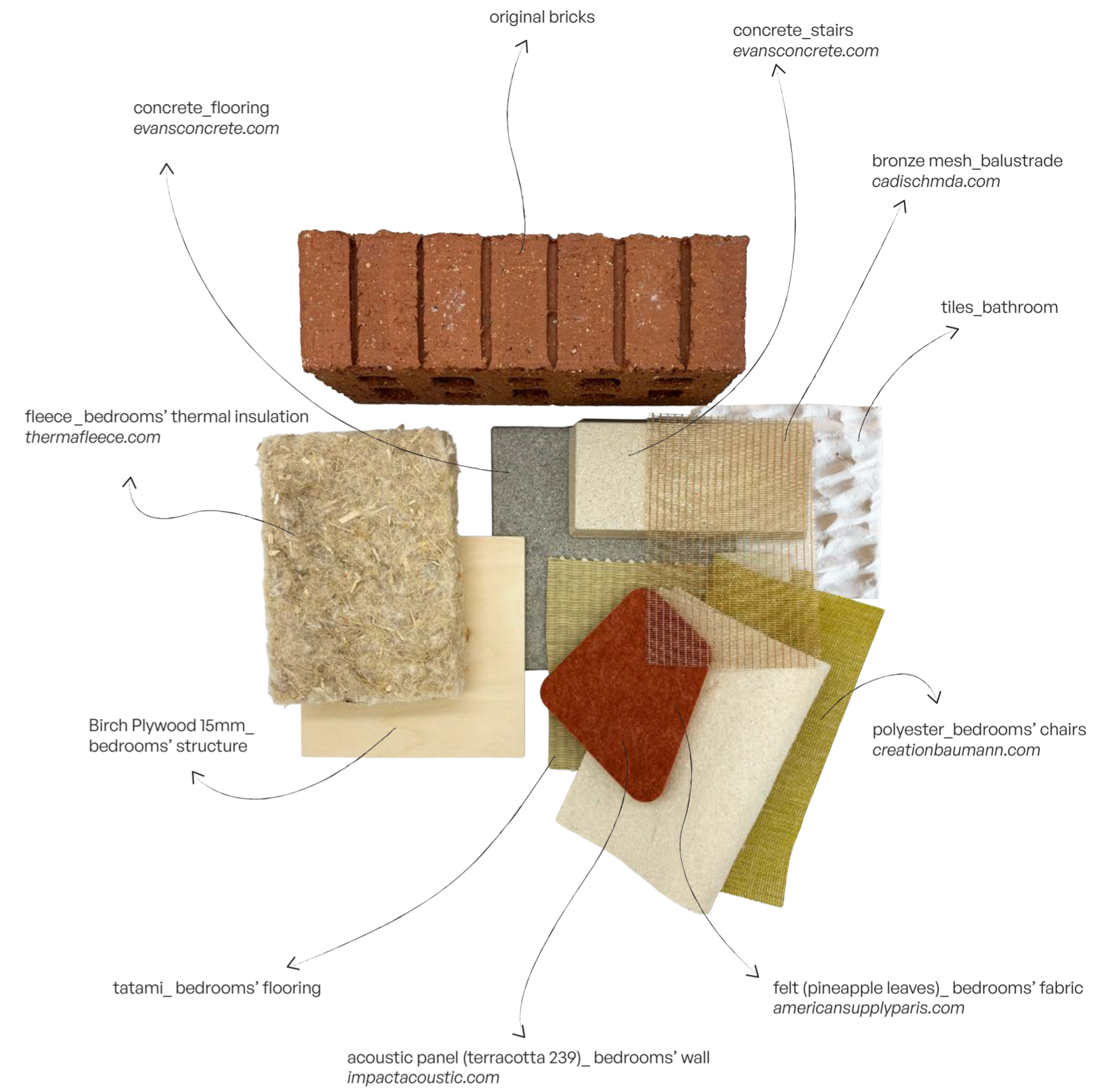
*Negative and clay surface*



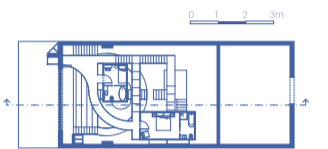
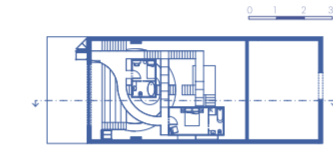
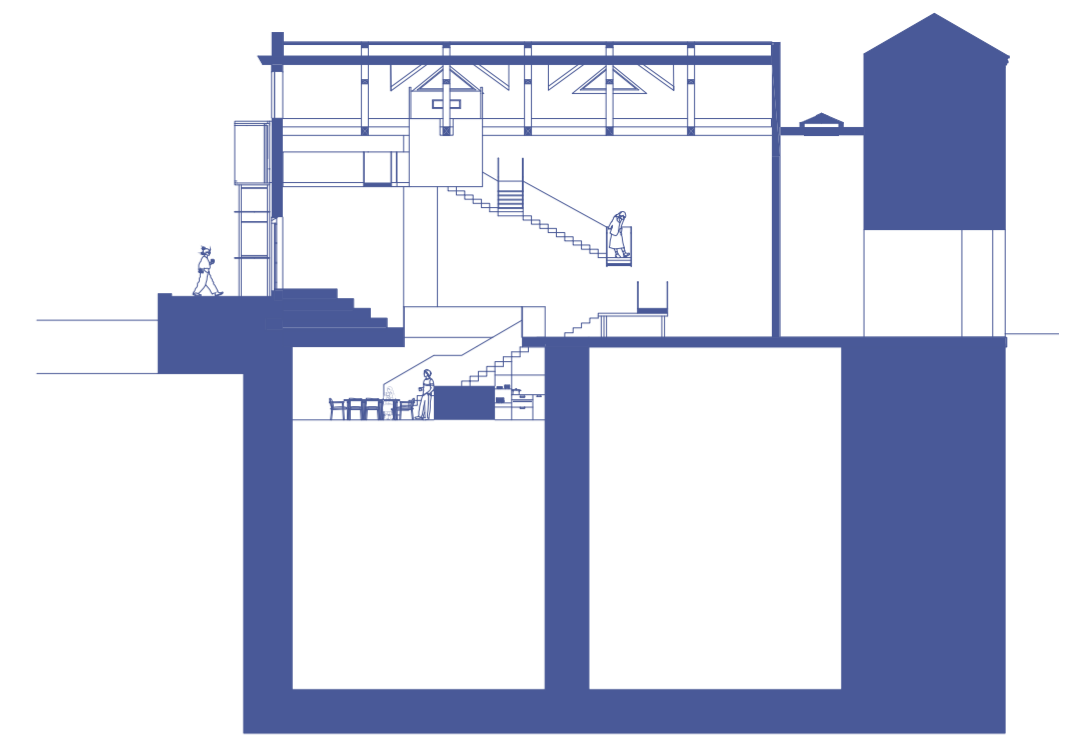
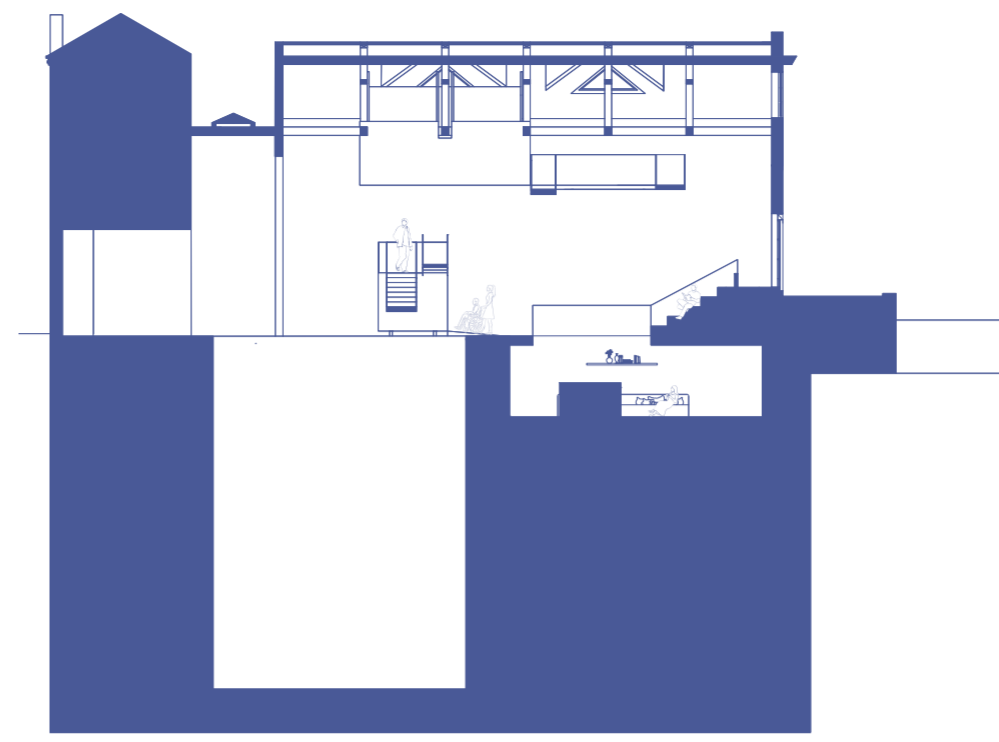
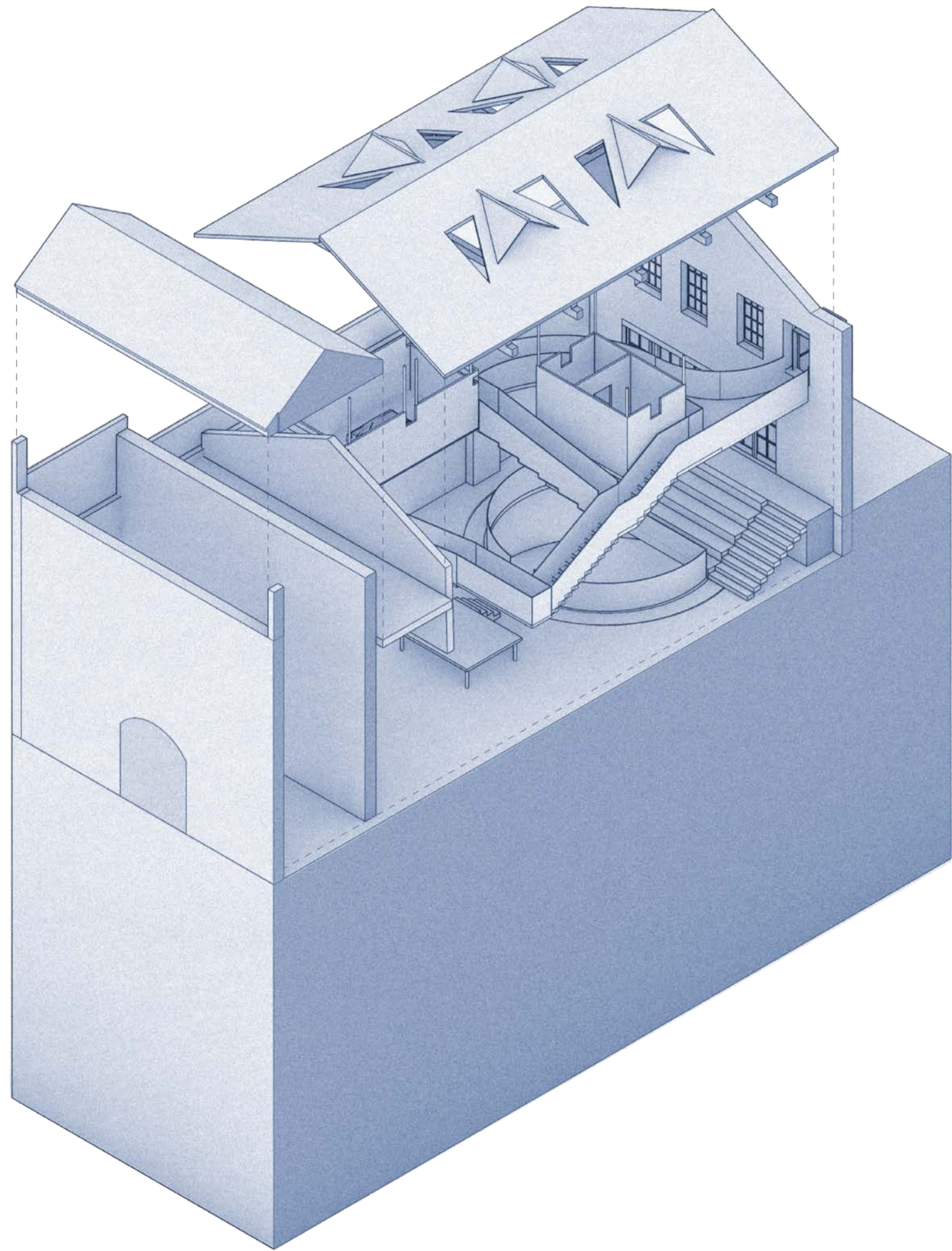
*Negative and positive*



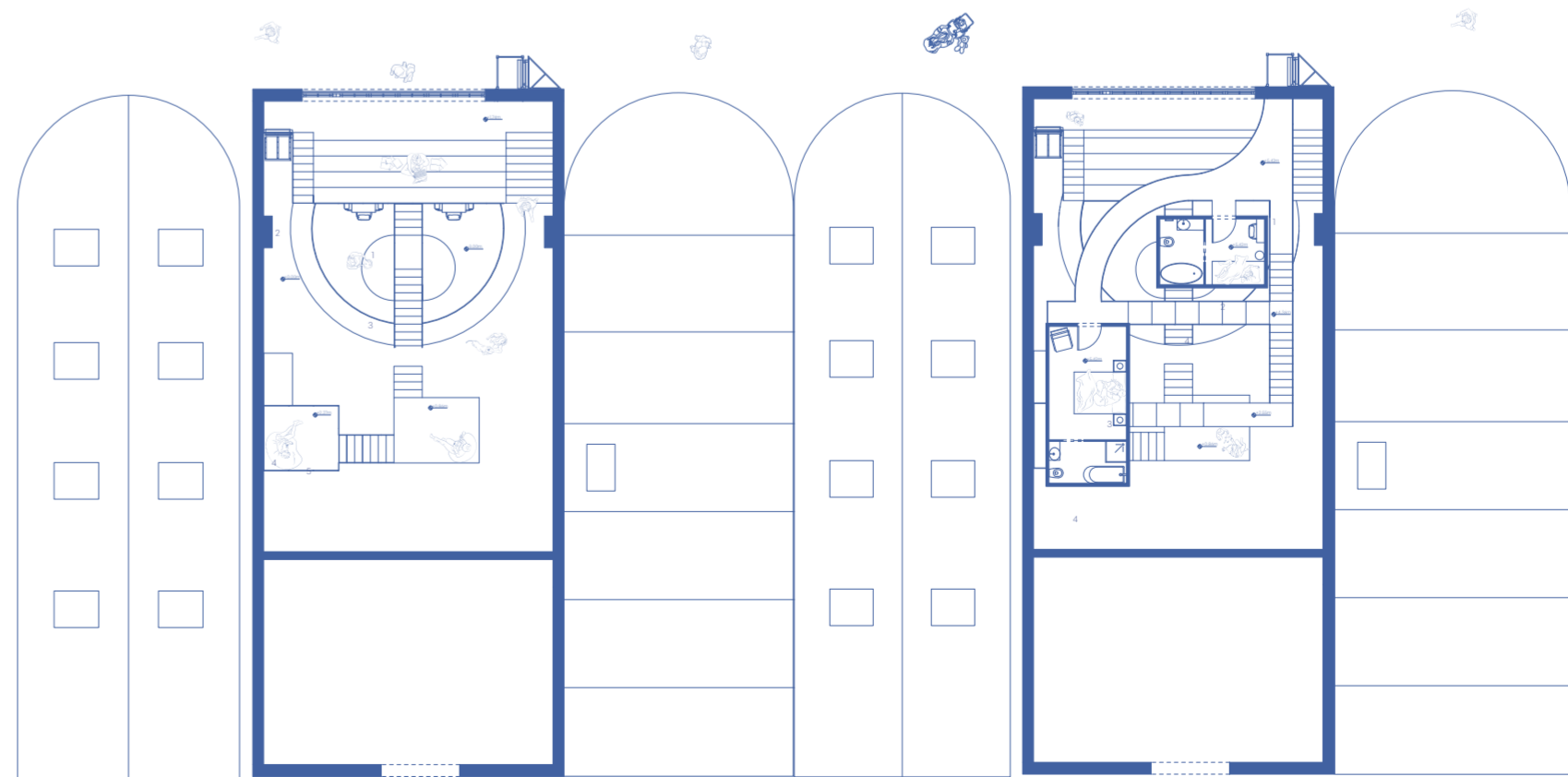
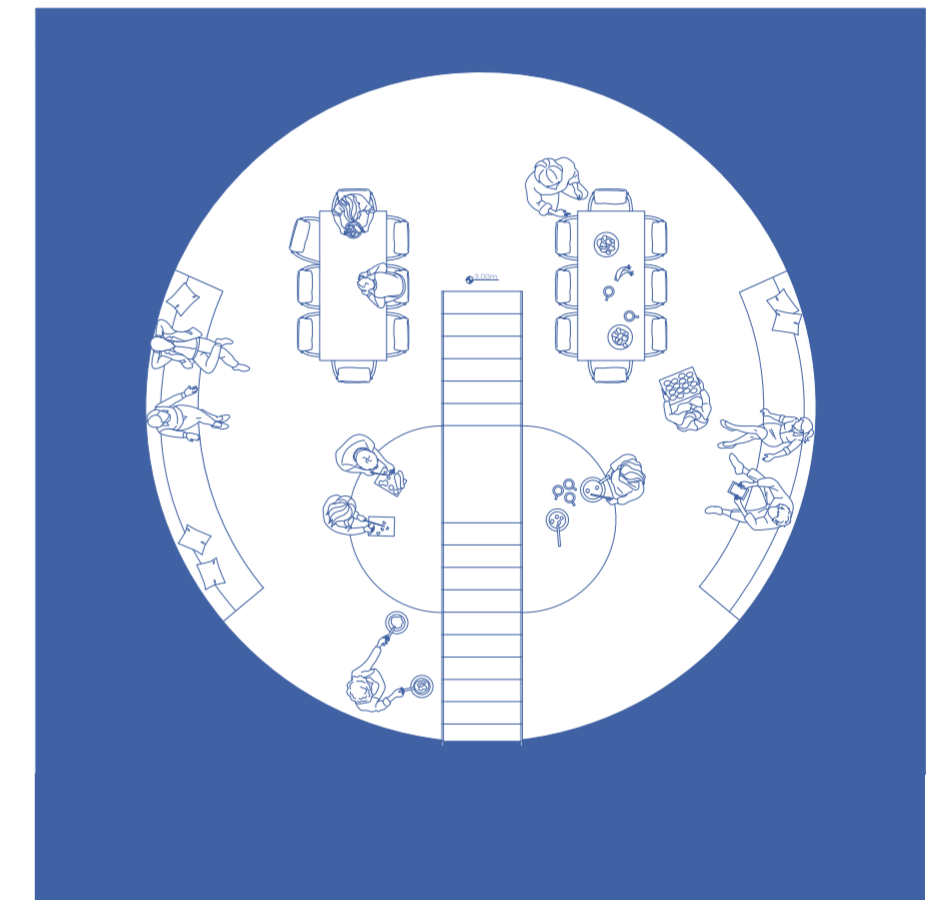
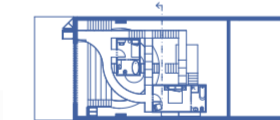
# Material Board



# Exploded axo



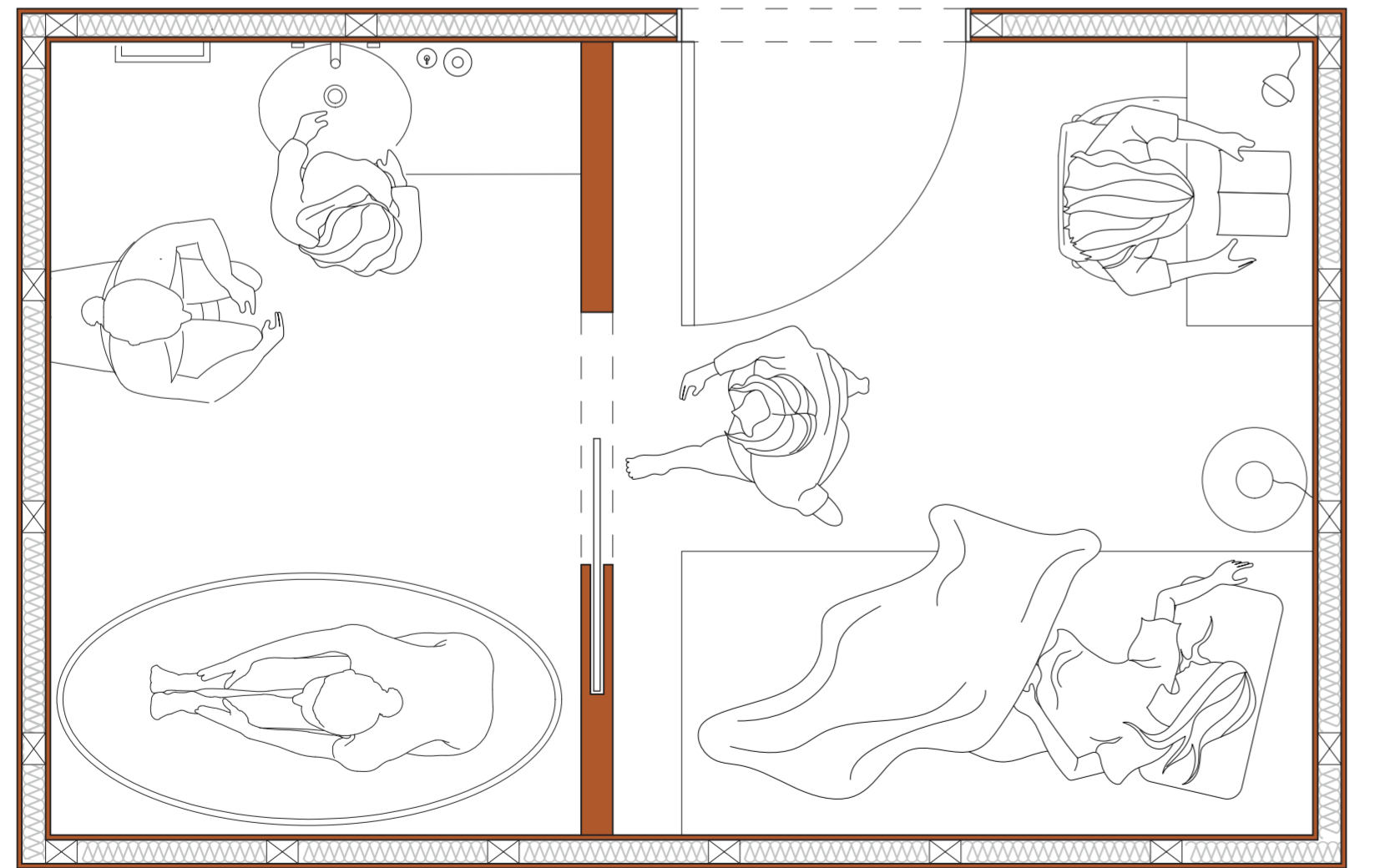
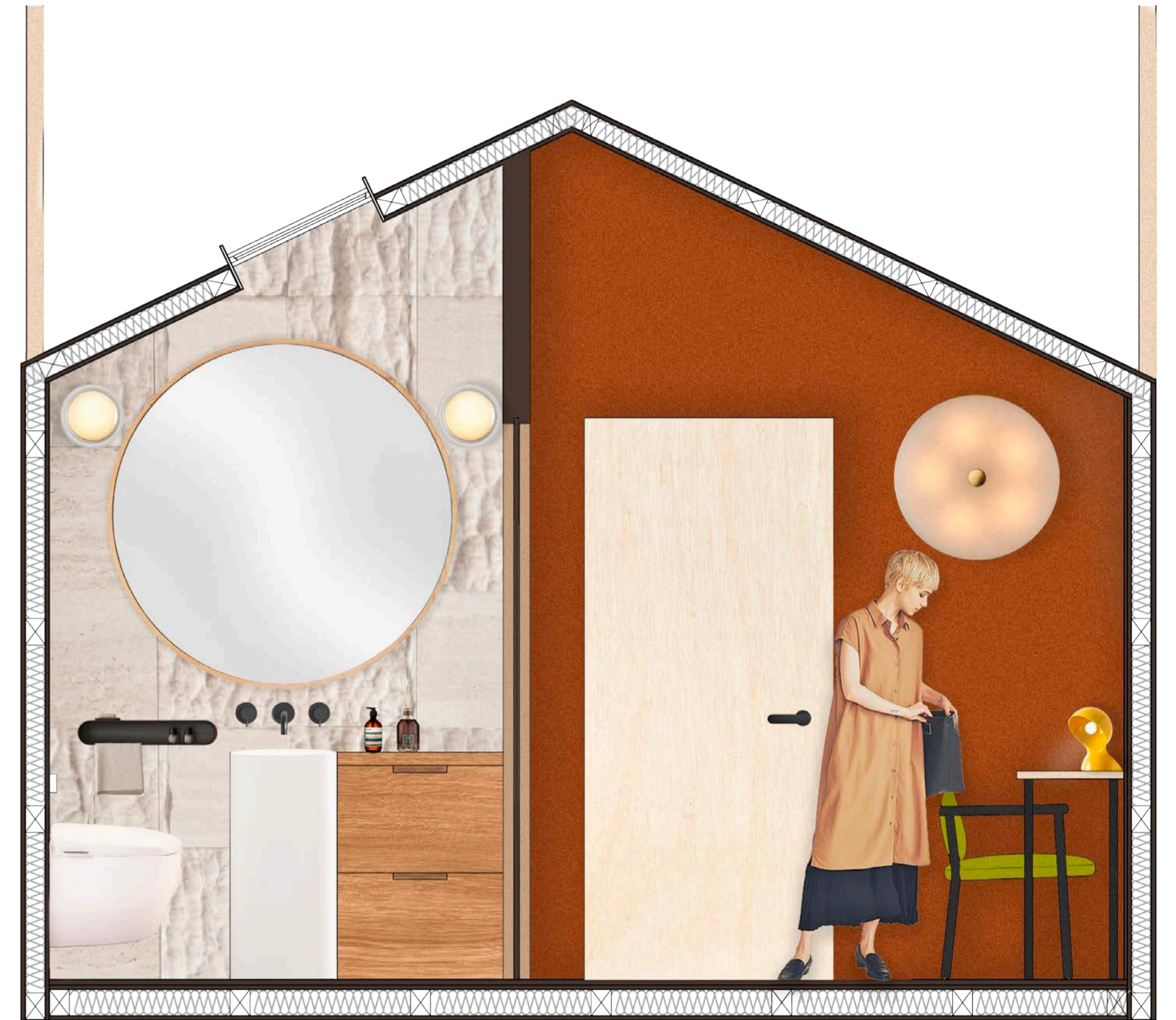
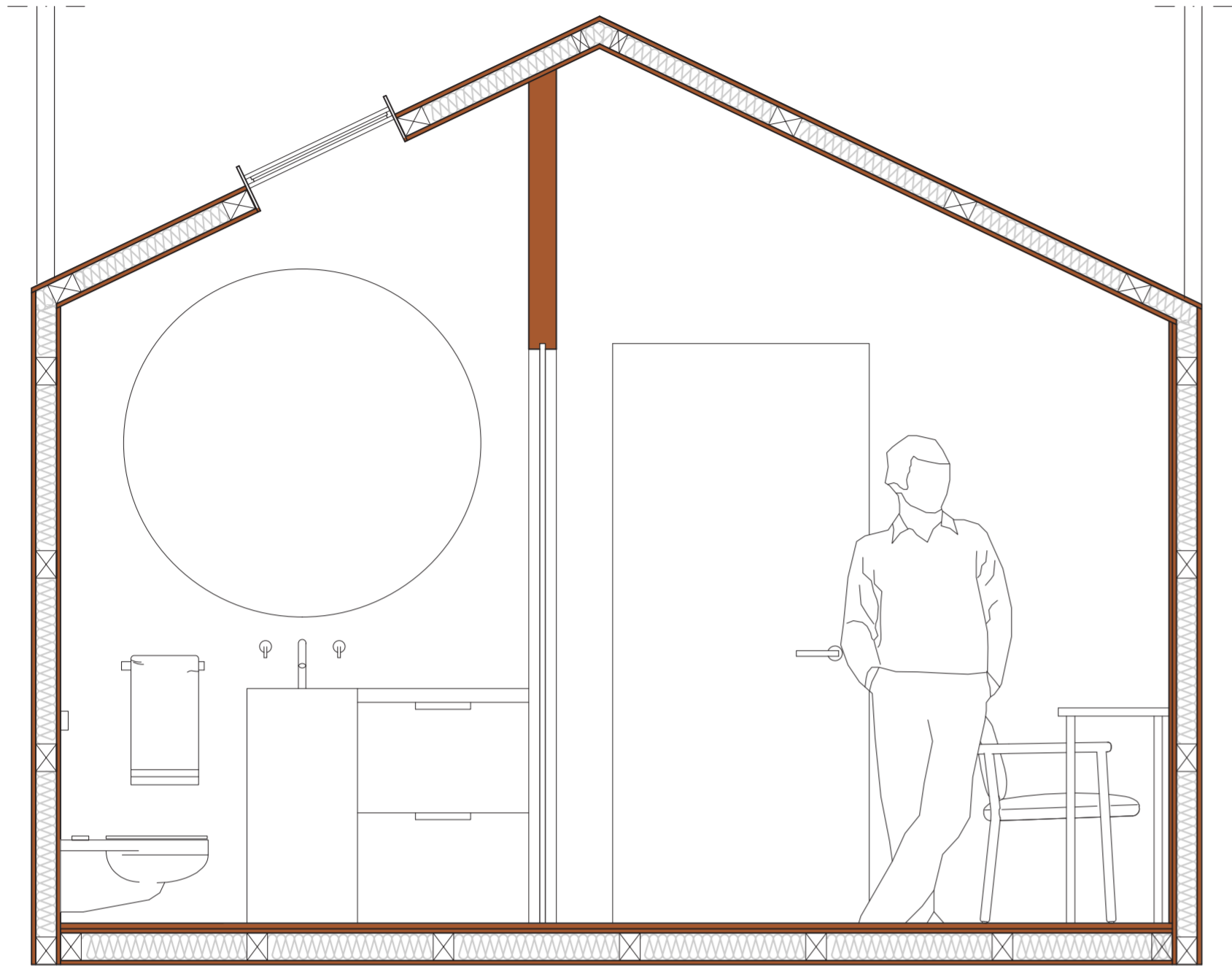
*into the ice well*



1. Relax area
2. Wheelchair lift
3. Family gathering
4. Ramp
5. Bathroom

1. Elevator entrance
2. Single bedroom
3. Double bedroom
4. Ensuite bathroom

# Inside the Single Bedroom



0 0.5 1m