

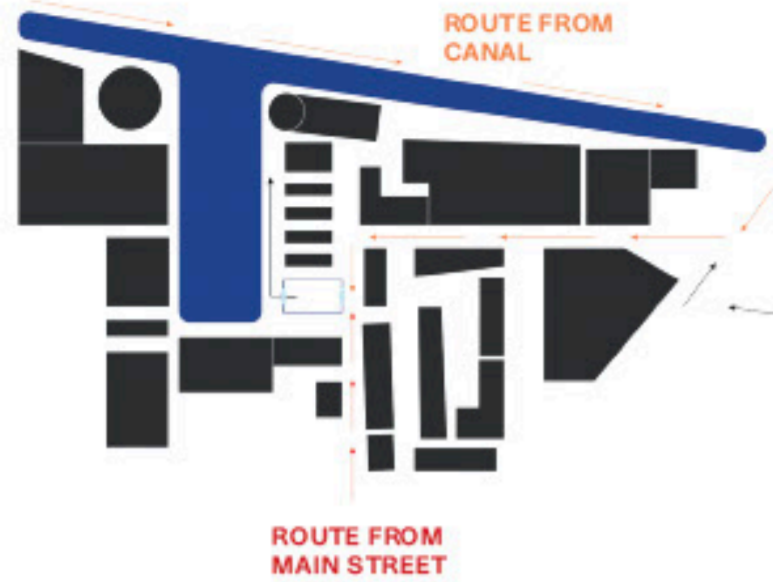


## Canal-Side Service Point & Exchange

This project responds to environmental and sustainability concerns by integrating water collection, reuse, and material sensitivity within a canal-side service point. It supports the repair, refuelling, and maintenance of boats while serving an often-overlooked canal community. A central trading hall encourages the exchange and reuse of boat parts and tools, alongside mooring points and a water refilling station. An elevated roof tank collects and processes rainwater, reducing reliance on mains supply while expressing the building's function. Material studies draw on the weathered patina of canal boats, grounding the design within its working context.

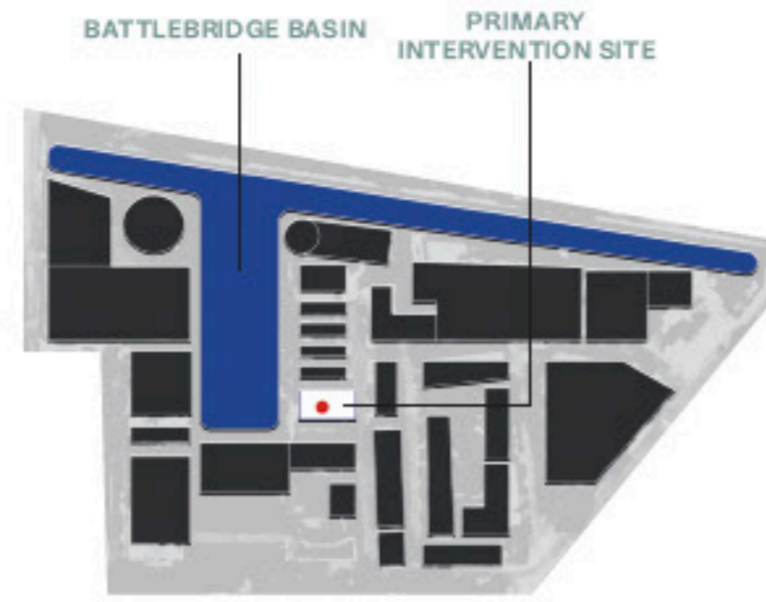
# SITE ANALYSIS

## Pedestrian Circulation



Although there are several routes to the site, the canal path is the least popular and is mainly known to those familiar with the area. From the main station, there were many signs directing visitors towards the museum; however, the canal route remains less visible due to its limited street presence and unclear entrances

- Enclosed Back Zones
- Canal
- London Canal Museum



## Battlebridge Basin



The basin functions as a docking area for canal boats.

Rotunda Bar & Restaurant sits within a contemporary, purpose-built structure, with a modern architectural style that contrasts with the surrounding historic canal warehouses.



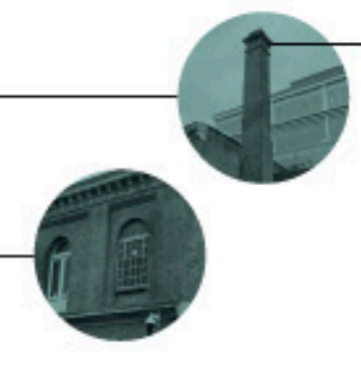
## Site walk



Graffiti found along route to site and canal, from my understanding of graffiti culture this is typical in neglected locations and shows



Guardian newspaper headquarters



The tall chimney is a prominent industrial feature, likely linked to steam-powered machinery, heating systems, or ventilation for storage and manufacturing, with layered corbelled brickwork and a capped crown that demonstrates craftsmanship even in a functional structure.

segmental brick arches, a hallmark of industrial warehouses.

Along the route to the site, a number of industrial-style buildings become increasingly prominent. Brick construction is a consistent feature throughout the area, reflecting its historic character. Traditionally, these buildings served as warehouses and wharves supporting canal trade, while nearby light industries included uses such as bottling plants, jam production, and flour mills.



Regent's Wharf is a clear example of adaptive reuse, where a formerly industrial canal-side warehouse has been transformed into modern commercial office and creative workspace. While its function has shifted to accommodate contemporary businesses, the development retains much of the original brick façade and historic character, reflecting the area's industrial heritage within a regenerated urban setting.

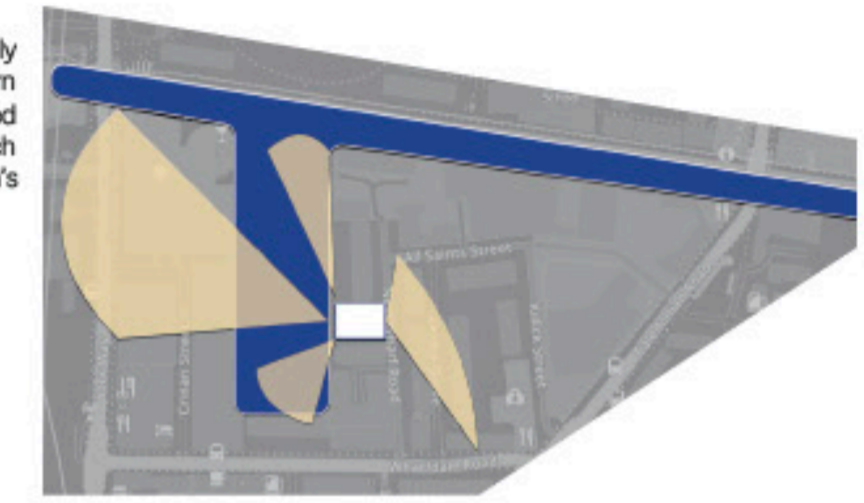


Entry to canal, unclear and hidden



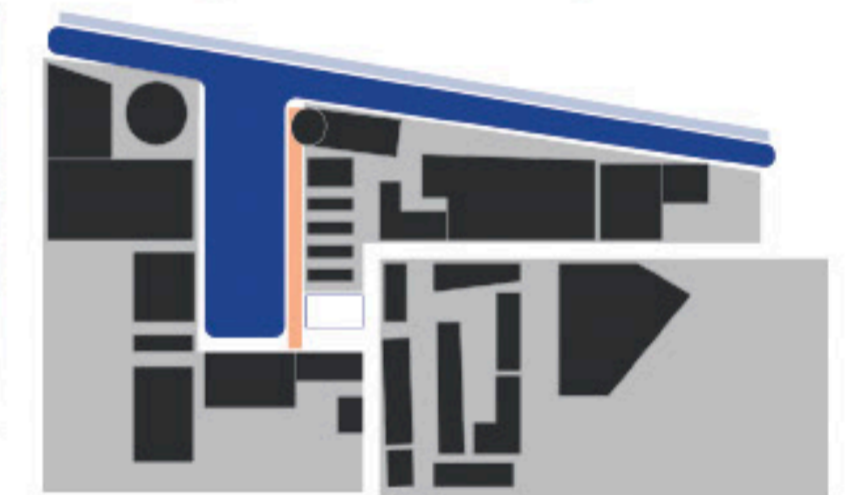
Urban context blocks the view of the canal

## Visual Connections



Sightlines from the point of view of the museum (including views of Battlebridge Basin, Regents Canal spine and Granary square)

## Urban Edge Conditions - Zoning



Through my site visit and analysis, the patterns of circulation surrounding the London Canal Museum become clear, alongside areas of the site that remain overlooked within the wider urban context. In particular, the canal-facing frontage of the museum appears neglected and underutilised.

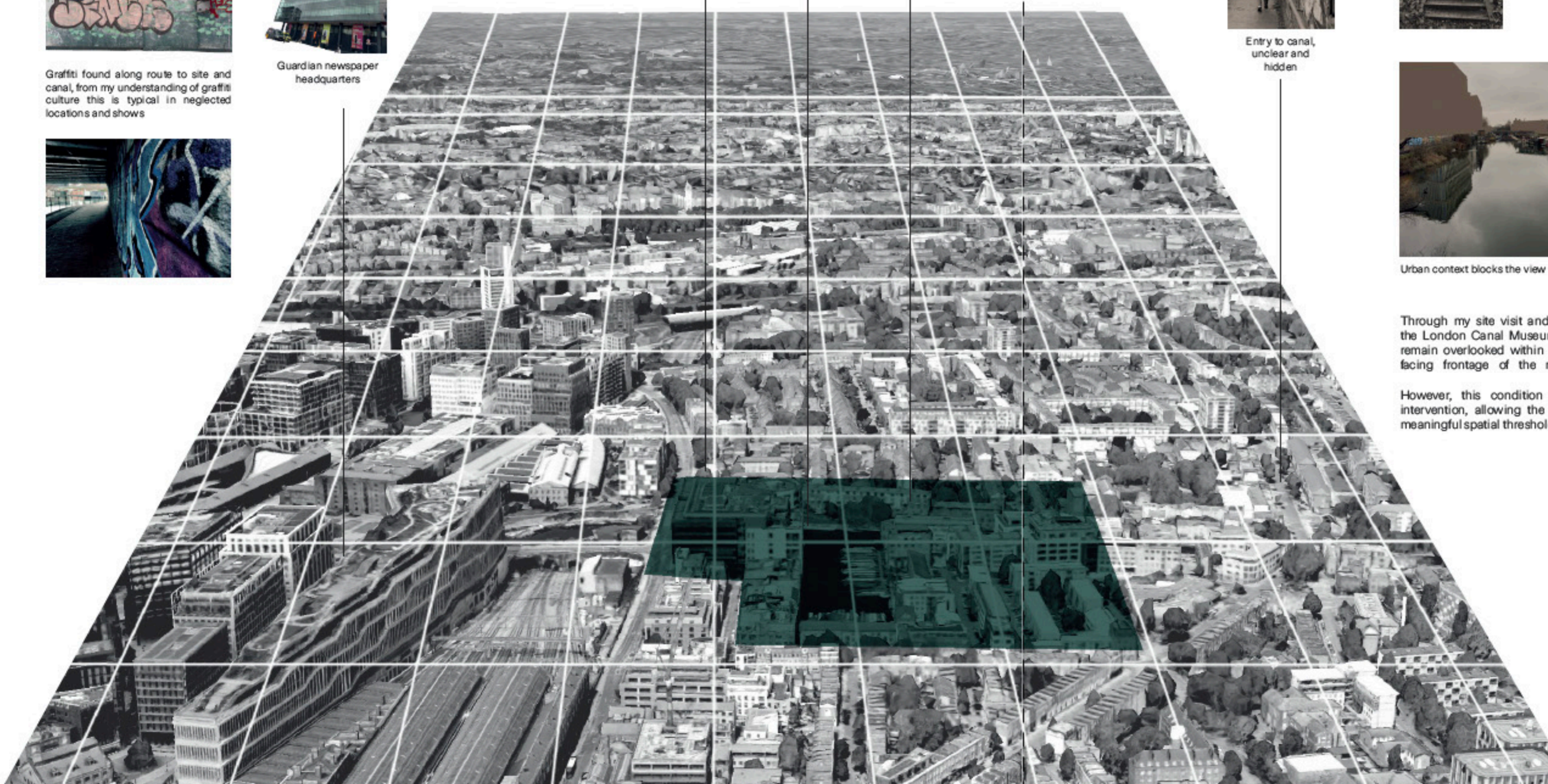
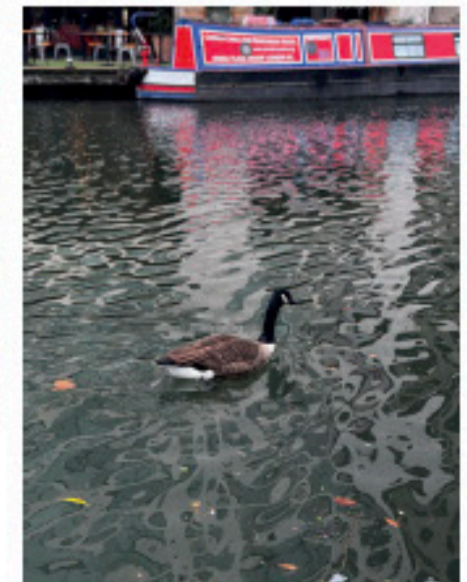
However, this condition presents a significant opportunity for design intervention, allowing the canal edge to be re-engaged as an active and meaningful spatial threshold.

- Enclosed Back Zones
- Canal Towpath
- Private Canal Walkway

## Secondary Uses of the Canal: Recreation and Ecology

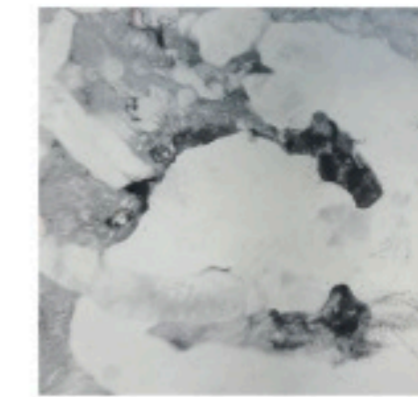


The canal now supports recreational activity, such as cycling routes along its edge, while also providing an urban habitat for wildlife, seen through the presence of waterfowl like ducks.

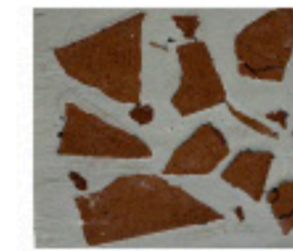




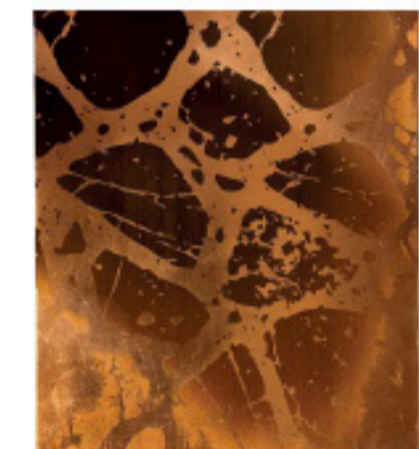
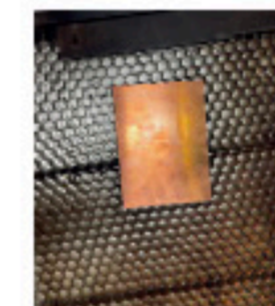
# TILE MAKING & EXPERIMENTATION



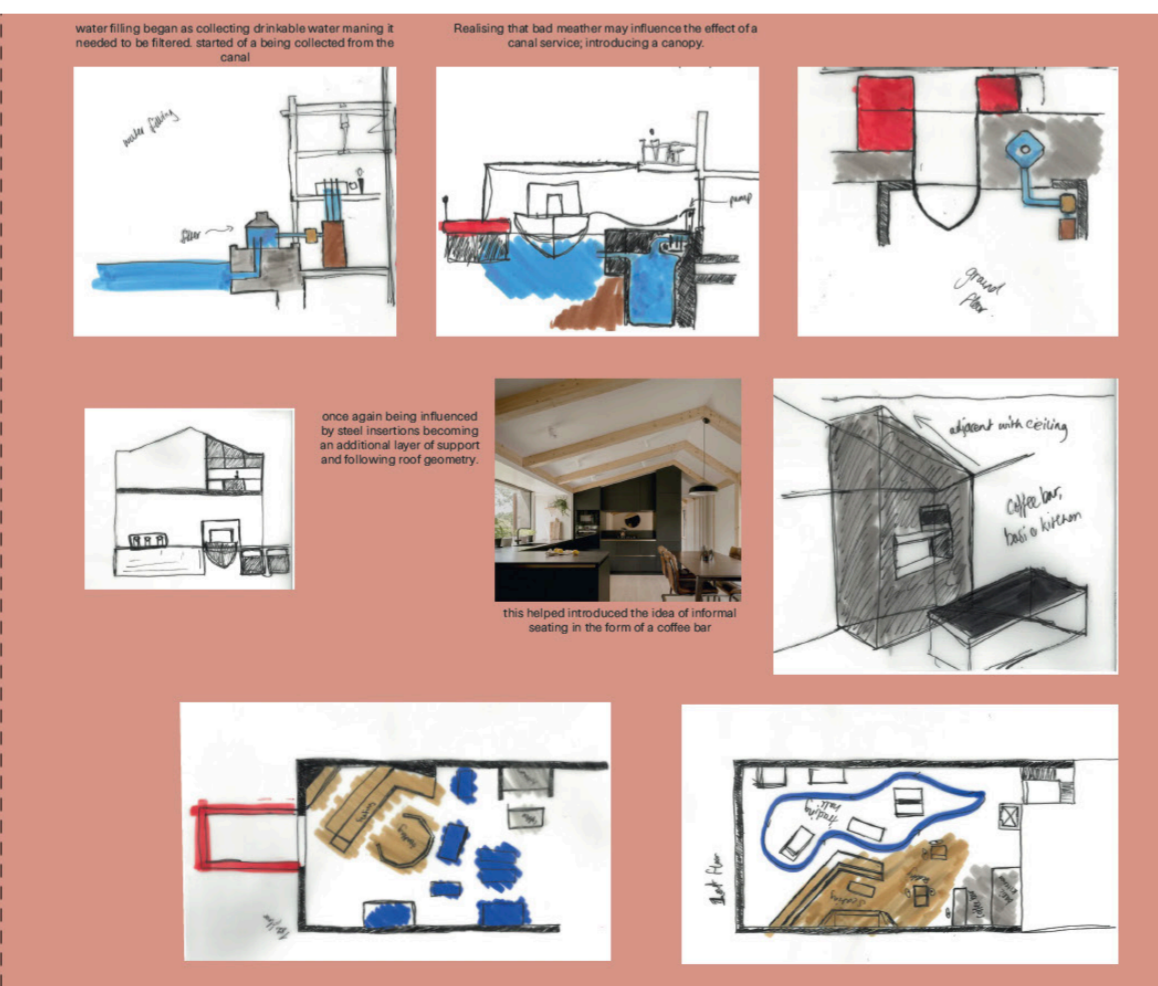
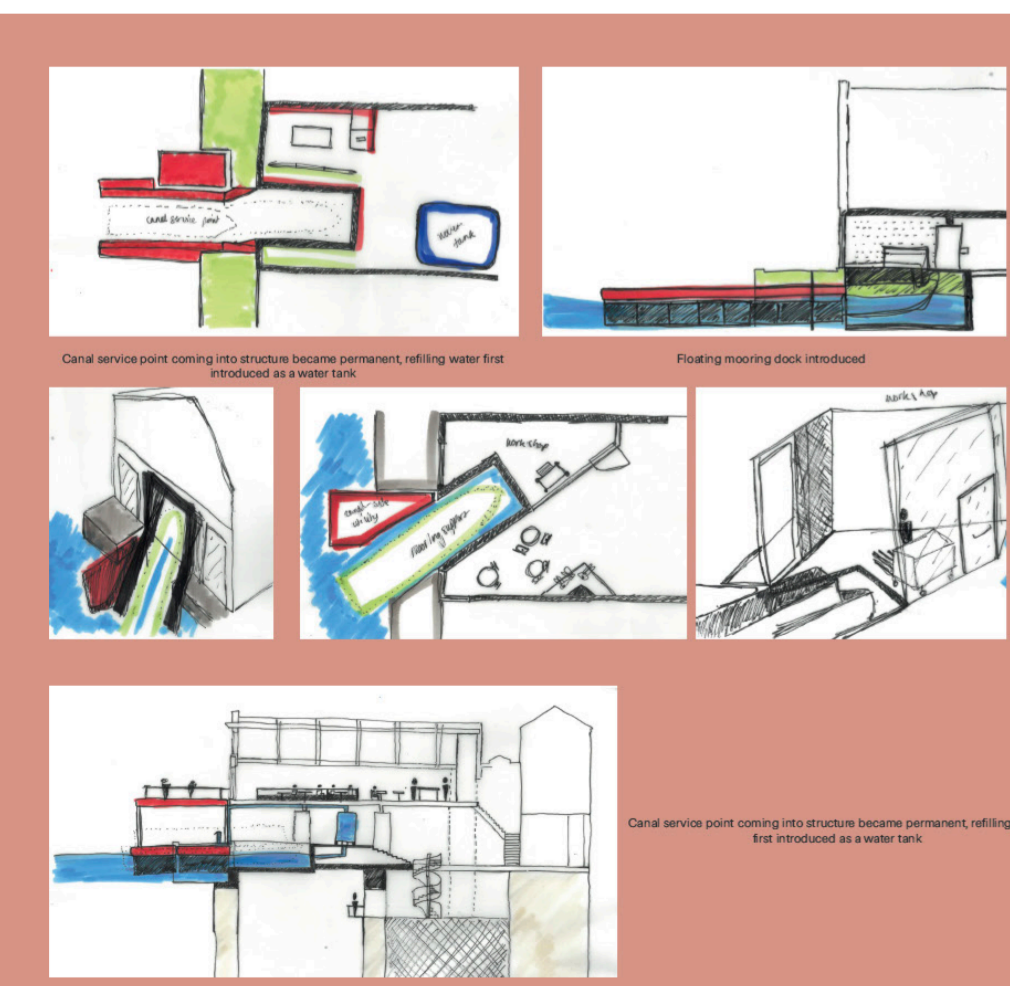
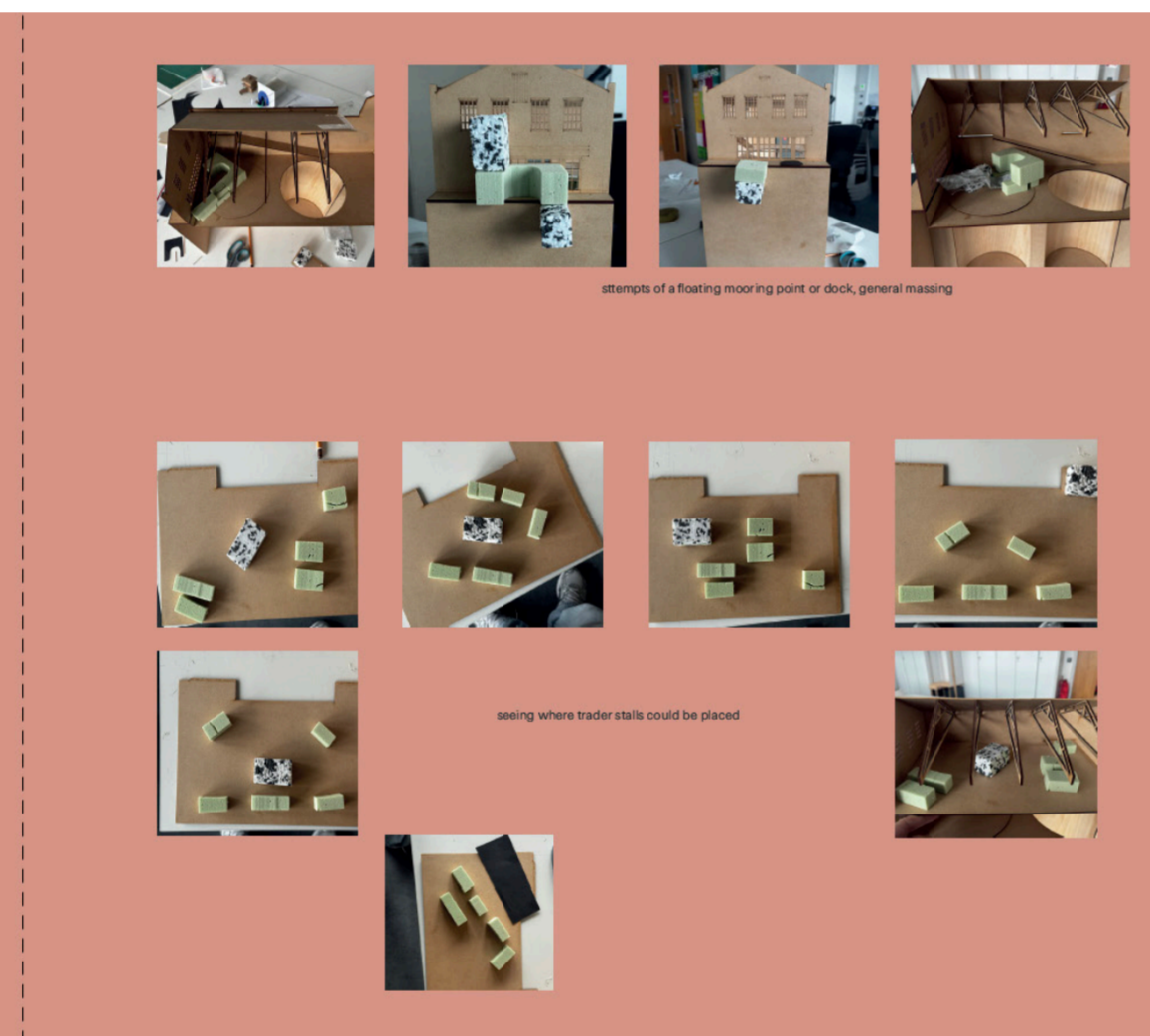
Created using plaster, water based inks, aswell as both hand made and 3d printed stencils



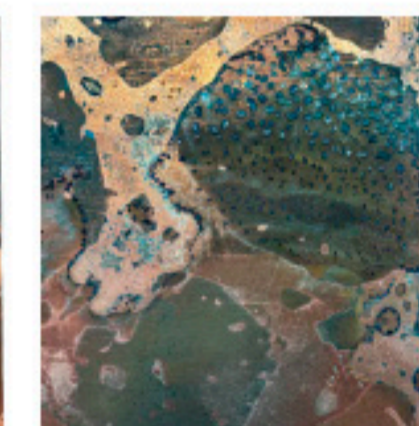
I attempted to recreate a version of mosaic factory's terrazo tiles using one of these samples which I had smashed



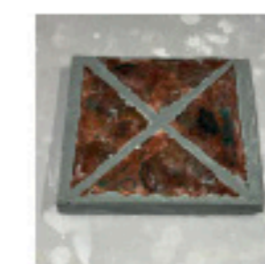
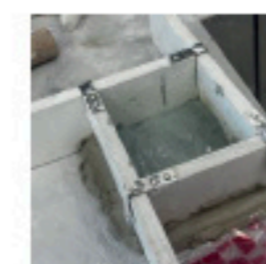
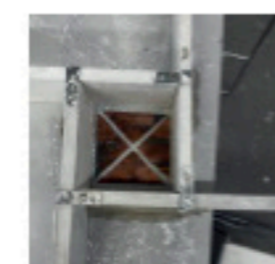
I used a laser cutter to edge into a sheet of copper and aluminium. I etched both geometric and abstract patterns mimicing Mosaic Factory.



I then poured vinegar and let them oxidise. The effects on the aluminium were not visible.



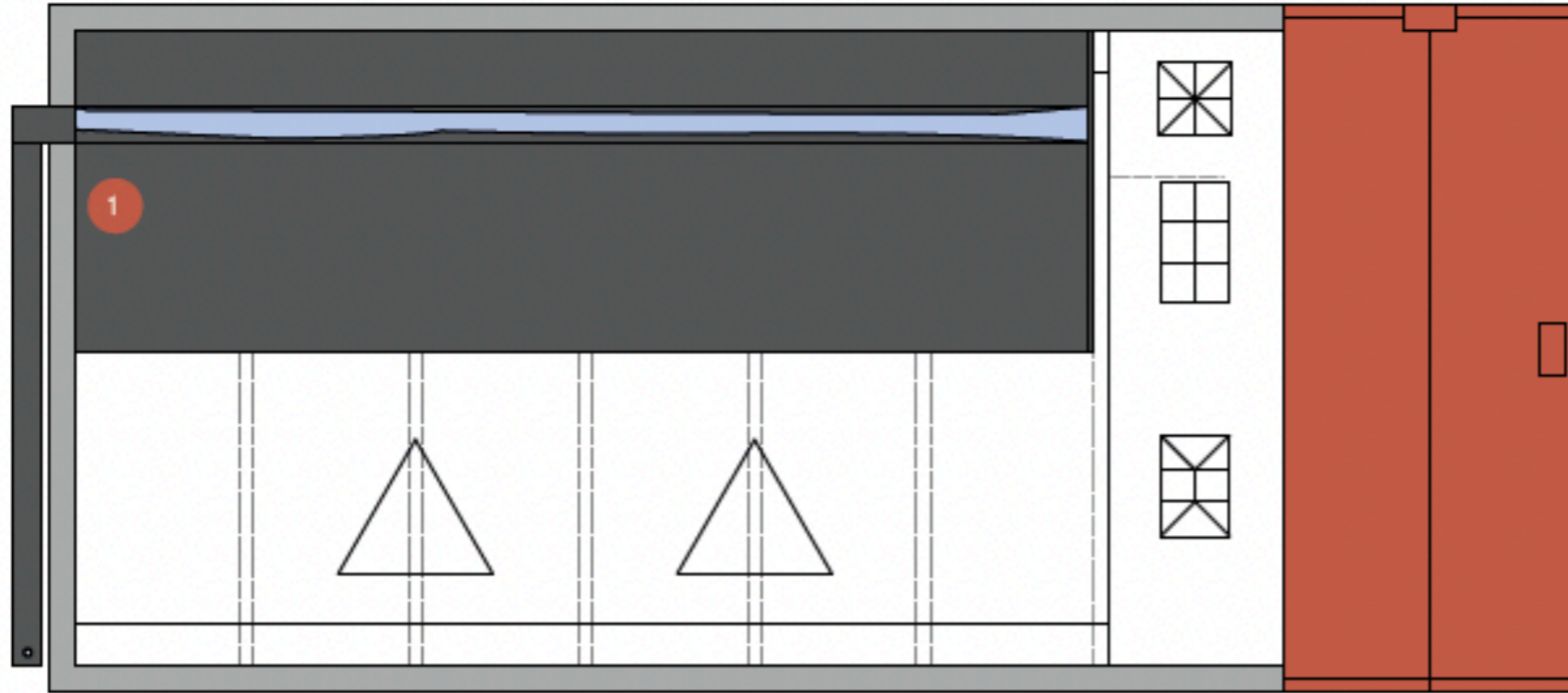
Reactivity increased with the etched surface and even created a crystallised look, mimicing the patina of copper.



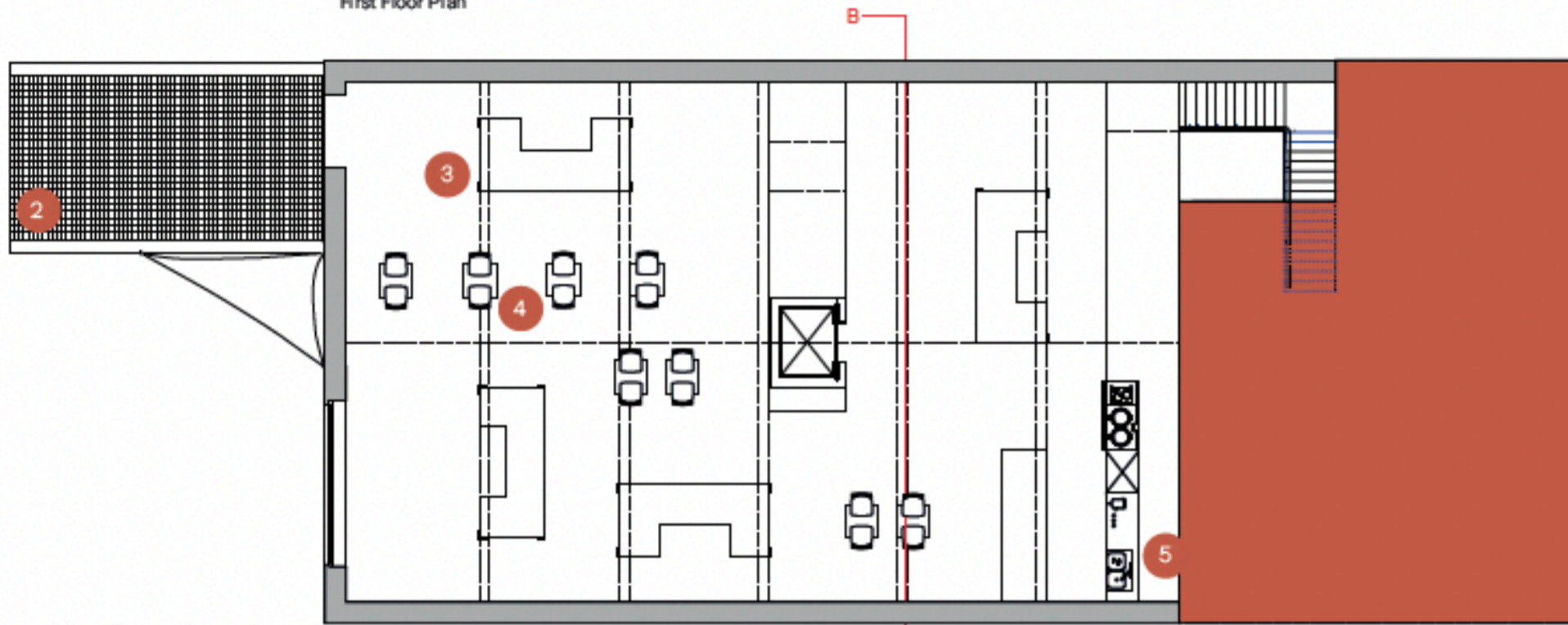
I cut up the existing copper plate tile, placed them facing downward and poured the plaster-water mixture into a square border.



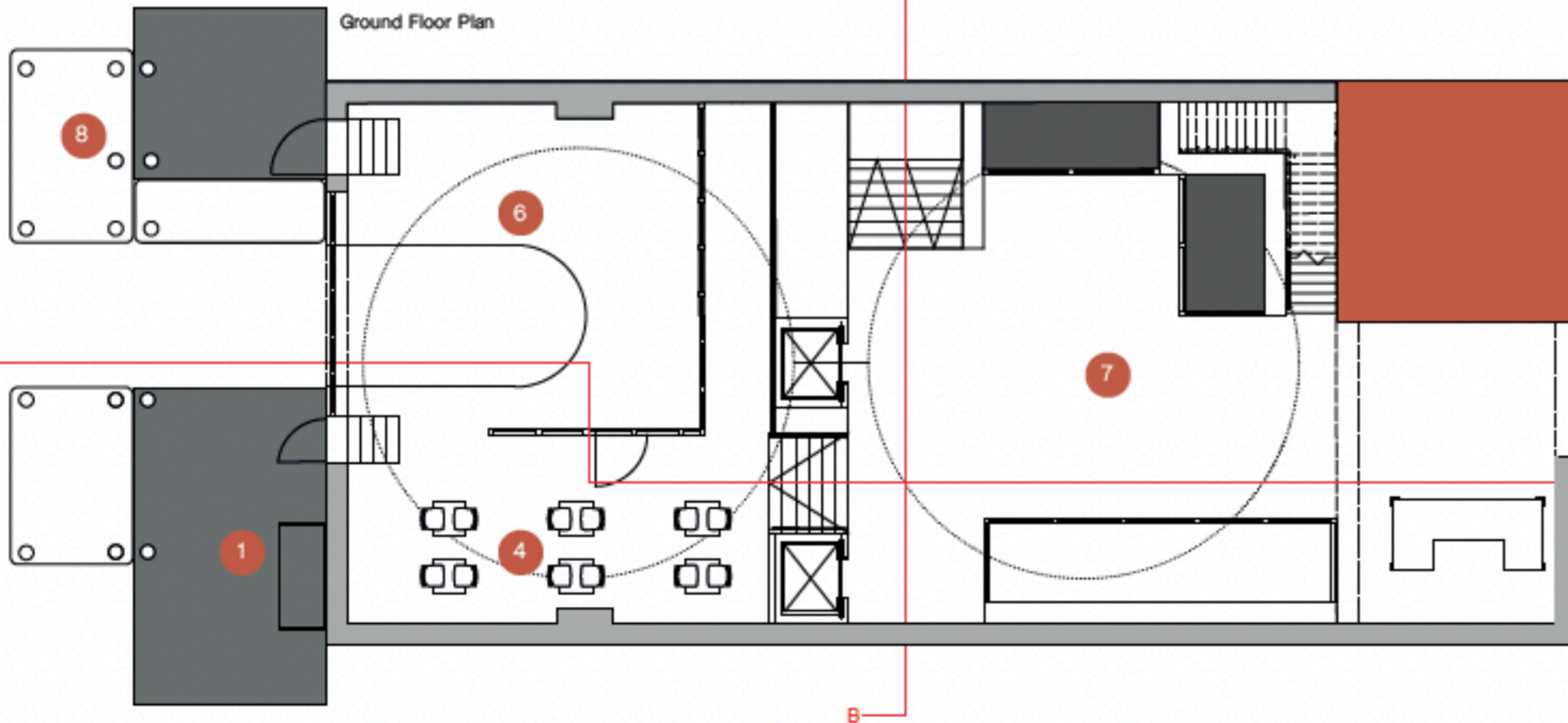
Roof Plan



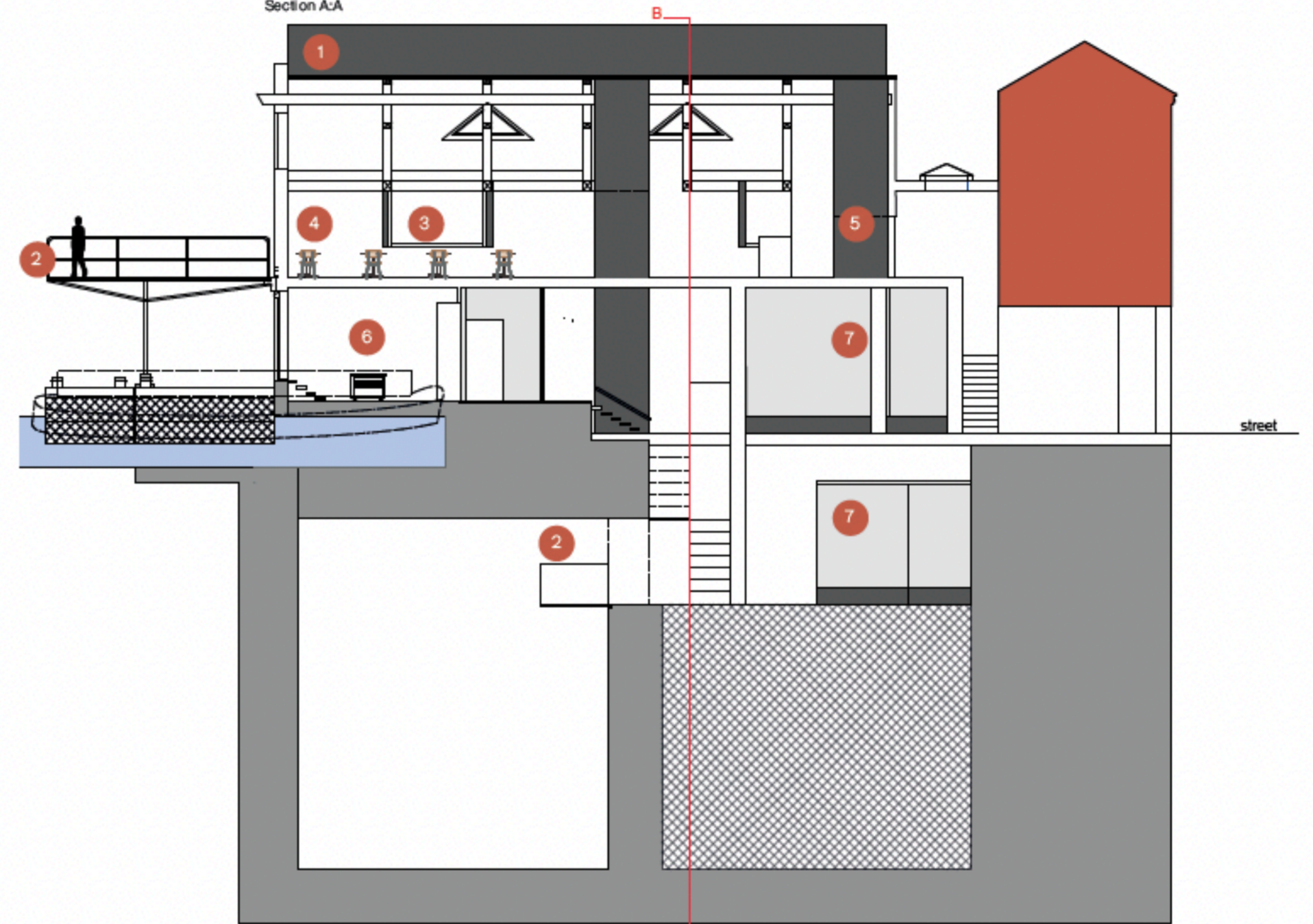
First Floor Plan



Ground Floor Plan



Section A-A



- 1 catchin rain water, canal boat refilling
- 2 viewing gallery/balcony
- 3 trader stands
- 4 seating areas
- 5 coffee shop and infofrmal kitchen
- 6 canal boat workshop
- 7 musuem displays
- 8 canal side service and mooring point

