

# NOT A SPA BUT A BATHOUSE

This project focuses on an evolving design methodology rather than a fixed final outcome. Through research, experimentation, reflective practice, and digital development, the work demonstrates an innovative and exploratory process. Critical thinking and iterative making informed each stage, enabling responses to spatial and social challenges through layered testing, reflection, and material exploration. Research into the lives of barges revealed a shared experience of daily struggle that disrupted comfort, routine, and peace of mind, often limiting their ability to fully relax within their own spaces. Despite these challenges, barges showed resilience and adaptability, continually finding ways to navigate limitations and maintain their way of life.



1800-Brownfields



1860-Expansion



1980-present museum

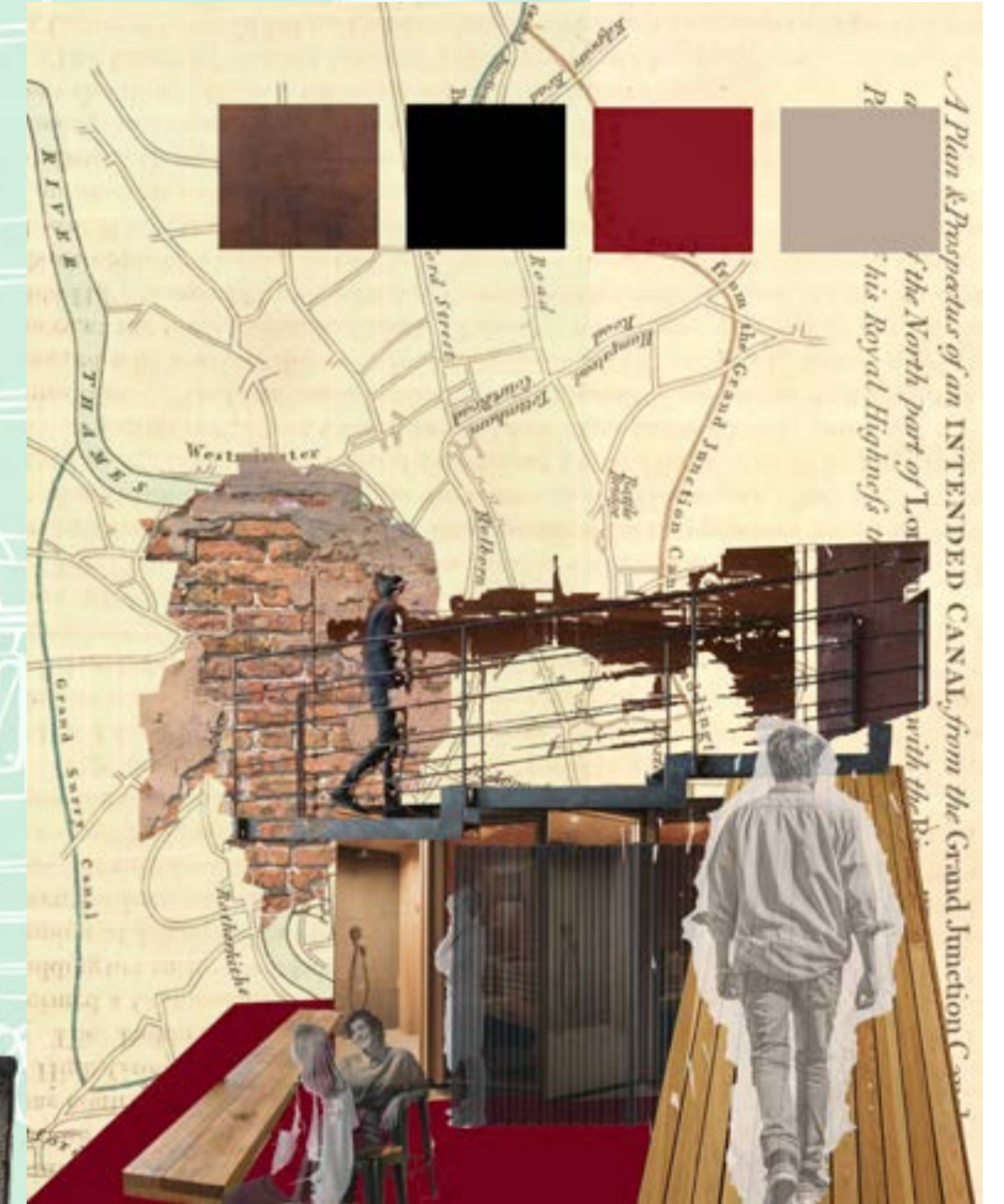


1850-Carlo Gatti owns property

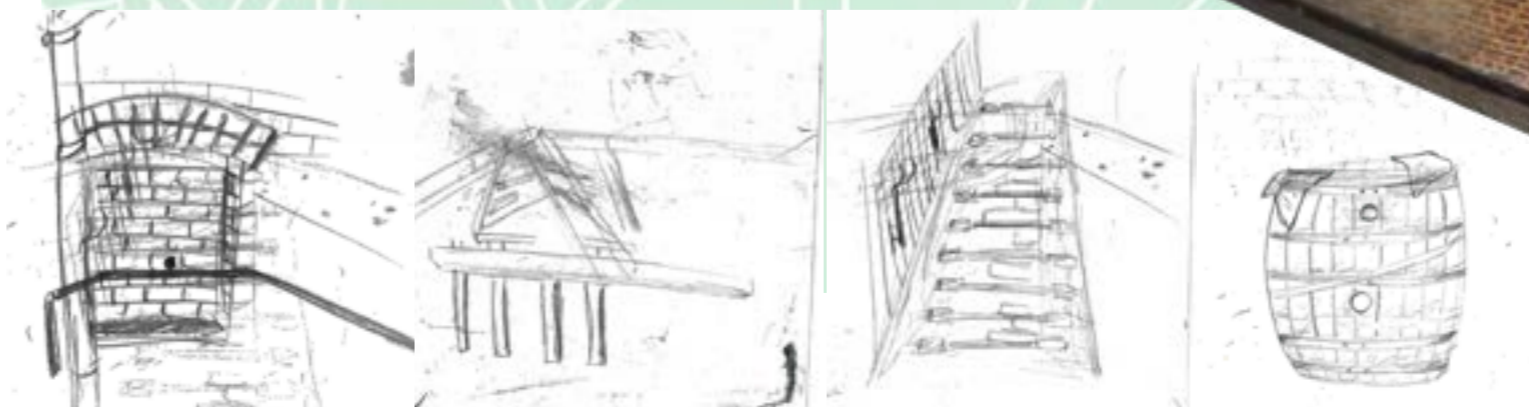


Listening to site:  
Blind sketching  
reflective writing  
digital scans  
research  
collage  
making  
map

Experimental Plasterworks

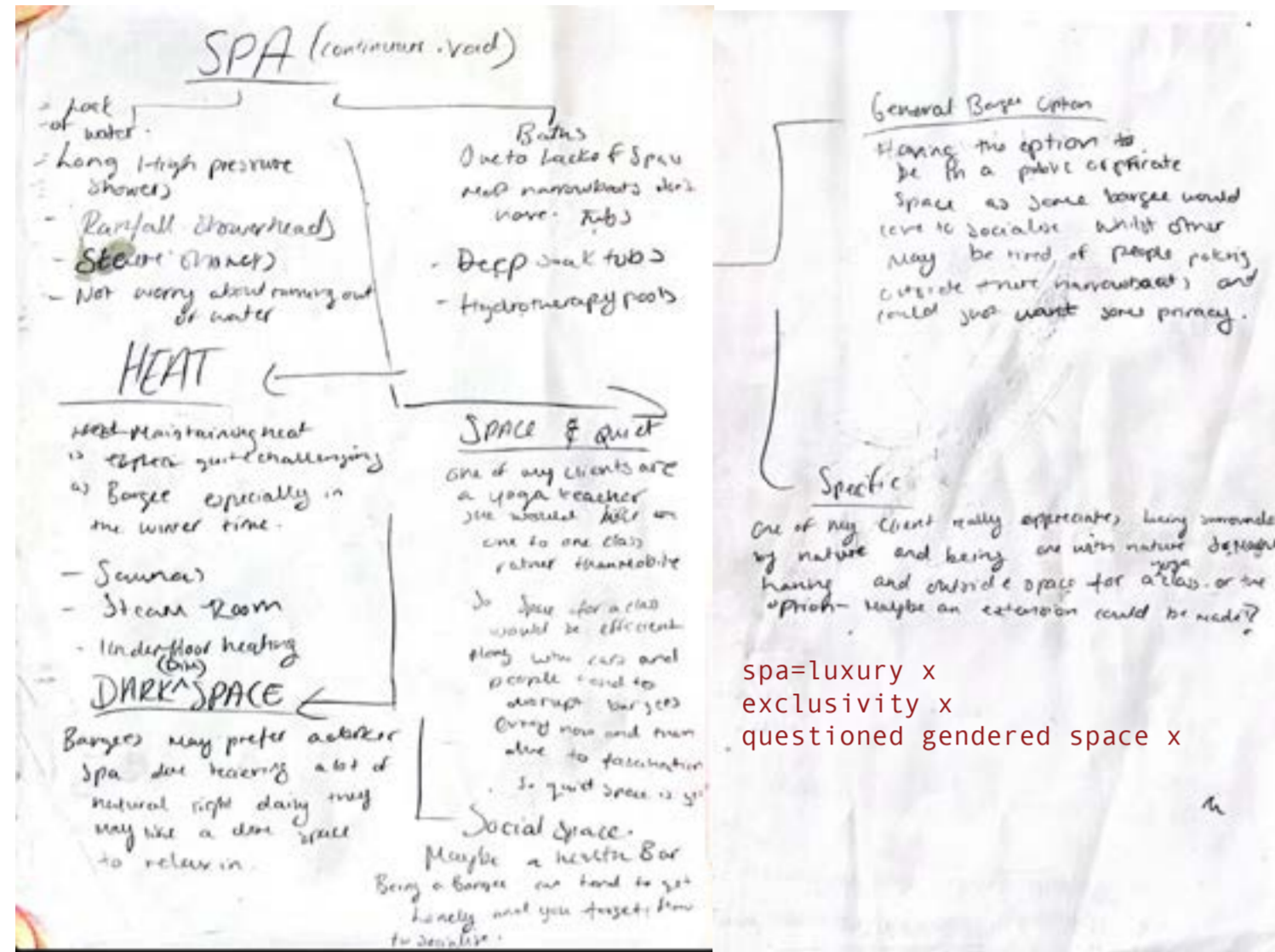


*The Abbing Canal*  
The London Canal Museum Entrance presents a needed view towards the canal, creating a somewhat understating yet expressive and lacking a strong identifiable form. However, this subtly almost feels intentional, as the strong historical use. Walking in considering we step back there'd be so much more and bustle the contrast between old and new back and new back were interesting being all the old features of this place such as the old ropes up the stables for the horses how different the space must've been back then very odd that all the demolished parts on our proposition really got you thinking how you would do that seeing the signs of the work how much has changed over time, interestingly.

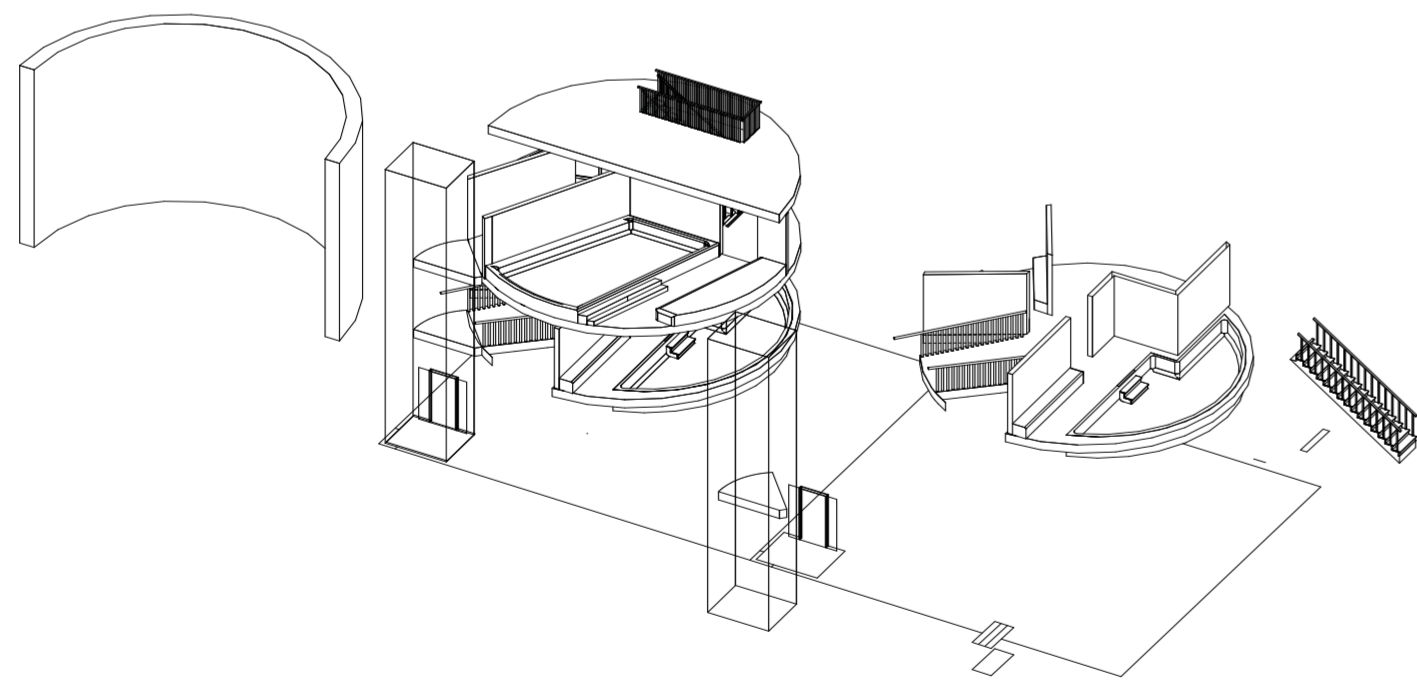


# DESIGN DEVELOPMENT

Initial proposals conveyed as a tradition spa :



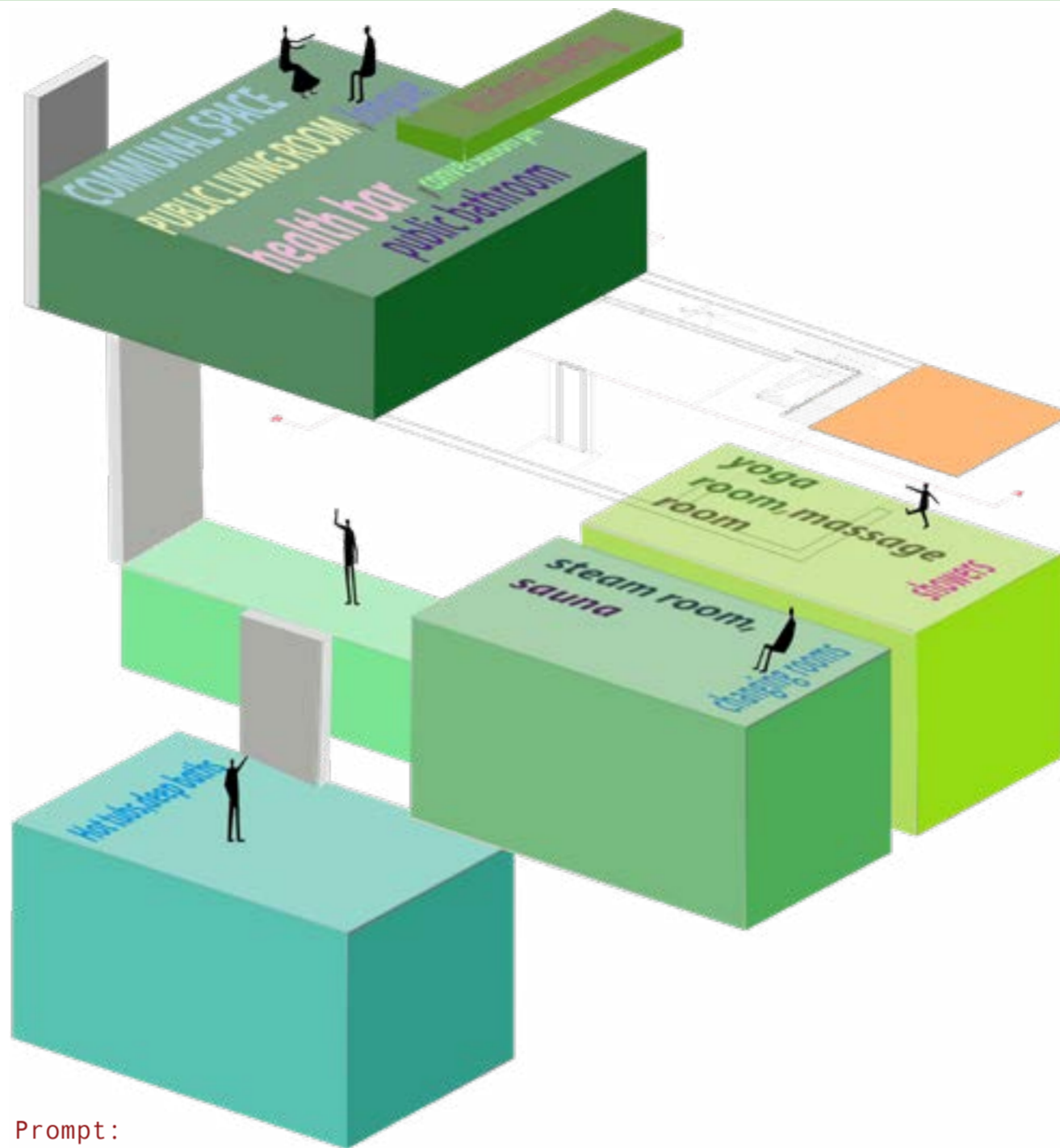
Design elements such as incidental bridges, communal spaces, and split arrangements emerged as iterative responses to ideas of accessibility, privacy, and community:



Disruption by nature:



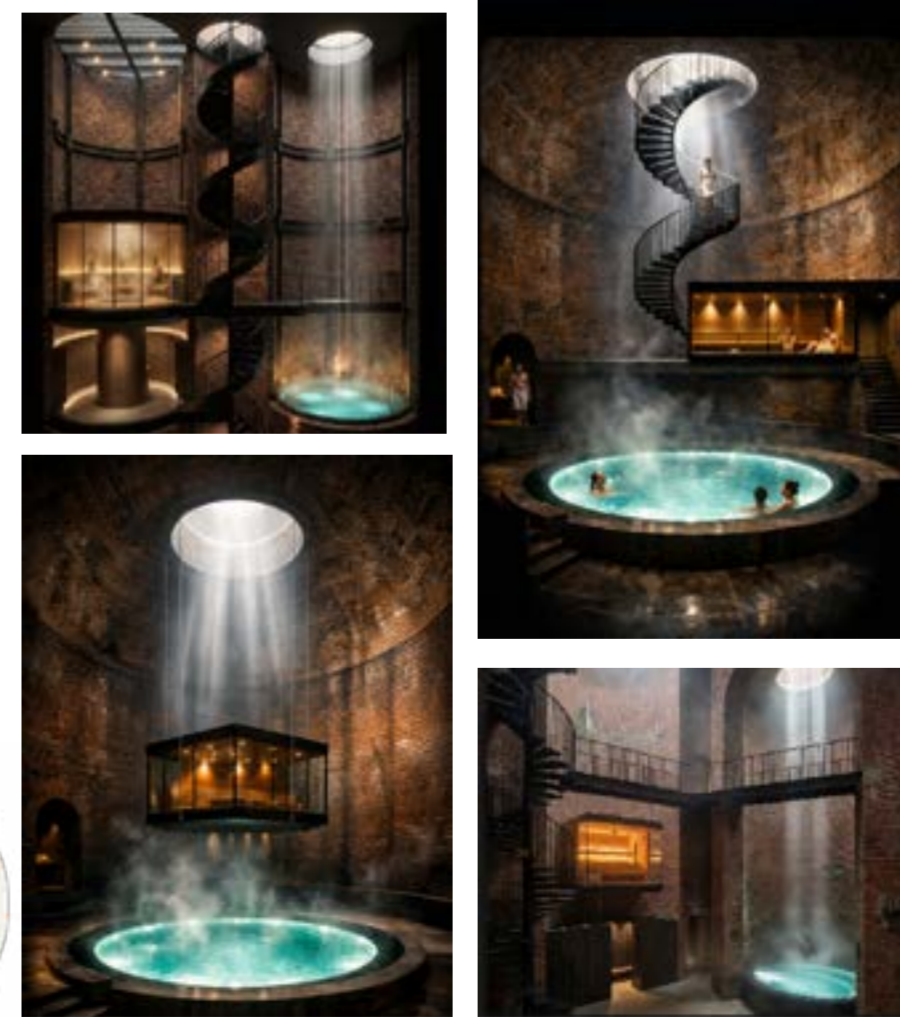
Programme in response to clients needs:



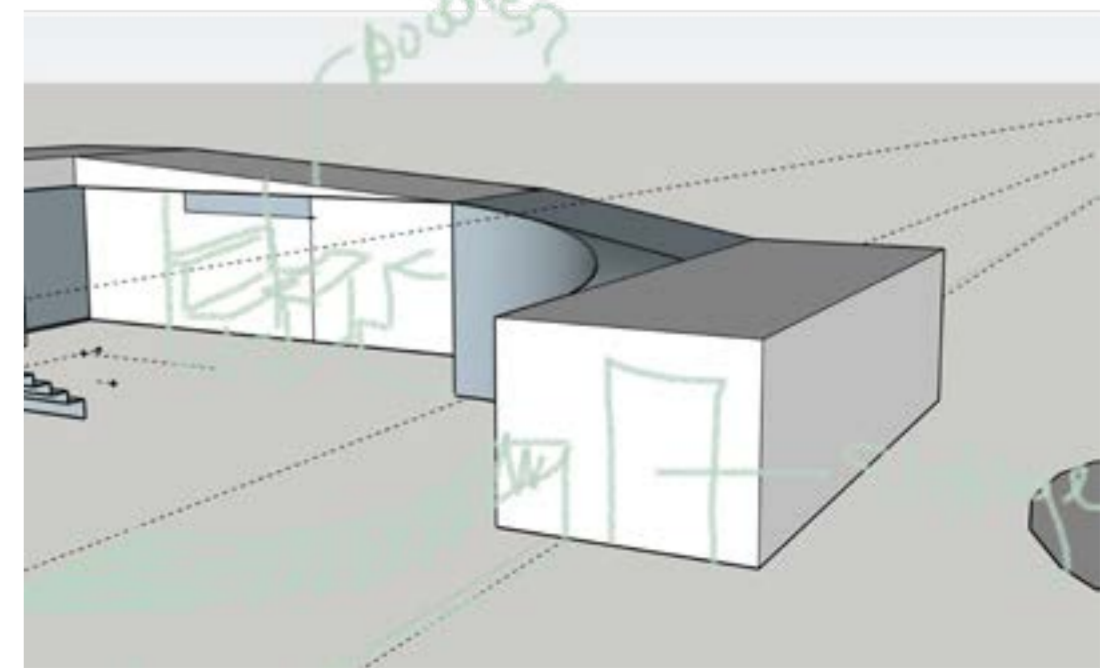
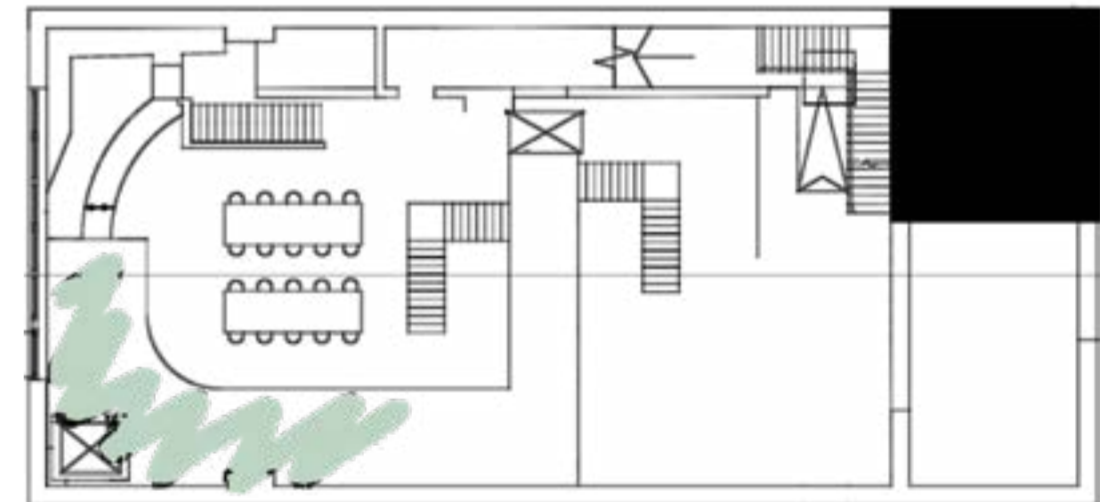
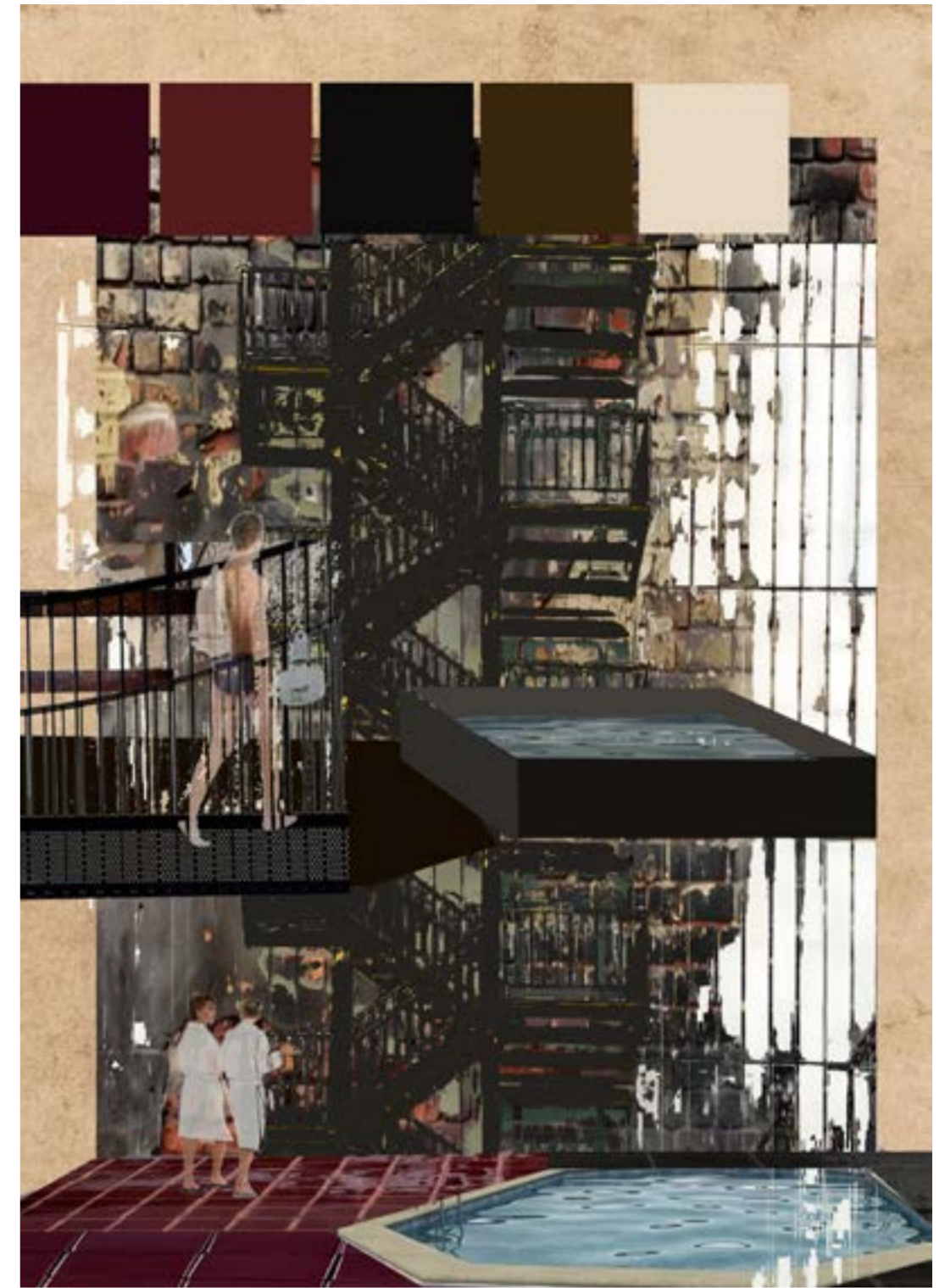
AI Prompt:

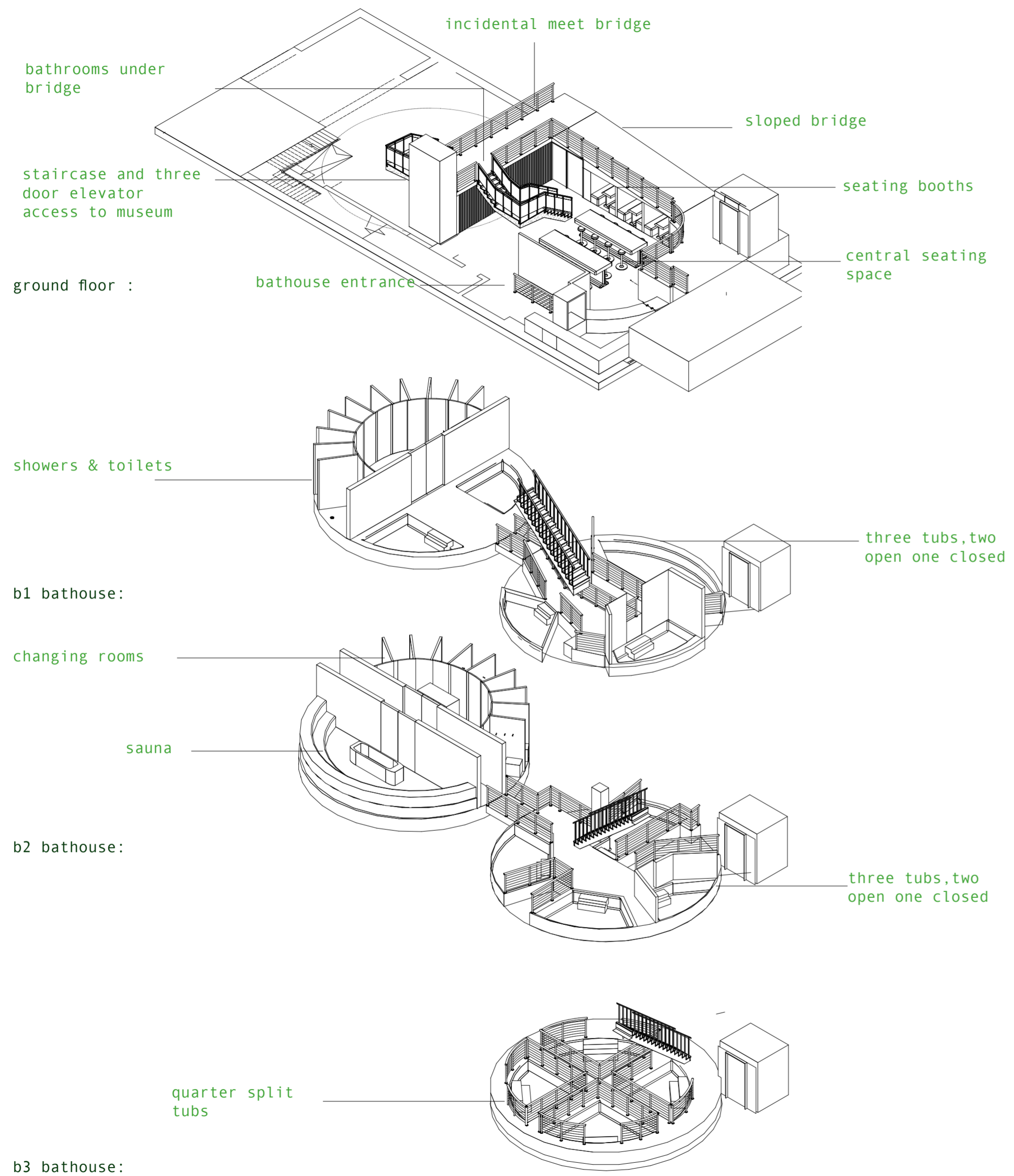
"action": "dalle.text2im",  
 "action input": "i", "prompt": "A cinematic architectural render of a luxury subterranean bathhouse inside a 19th-century circular brick ice well at the London Canal Museum. [1] The space is 30 feet wide with high verticality. At the bottom is a glowing circular plunge pool with turquoise water and steam rising. [2] Above the water, a modern glass-walled sauna is suspended in the center by thin steel cables. Dramatic light rays pour down from a circular opening in the ceiling, illuminating the ancient red brick walls and the mist in the air. The style is moody, minimalist, and high-end, similar to Peter Zumthor's Therme Vals but with industrial Victorian brickwork. High resolution, photorealistic, atmospheric lighting."

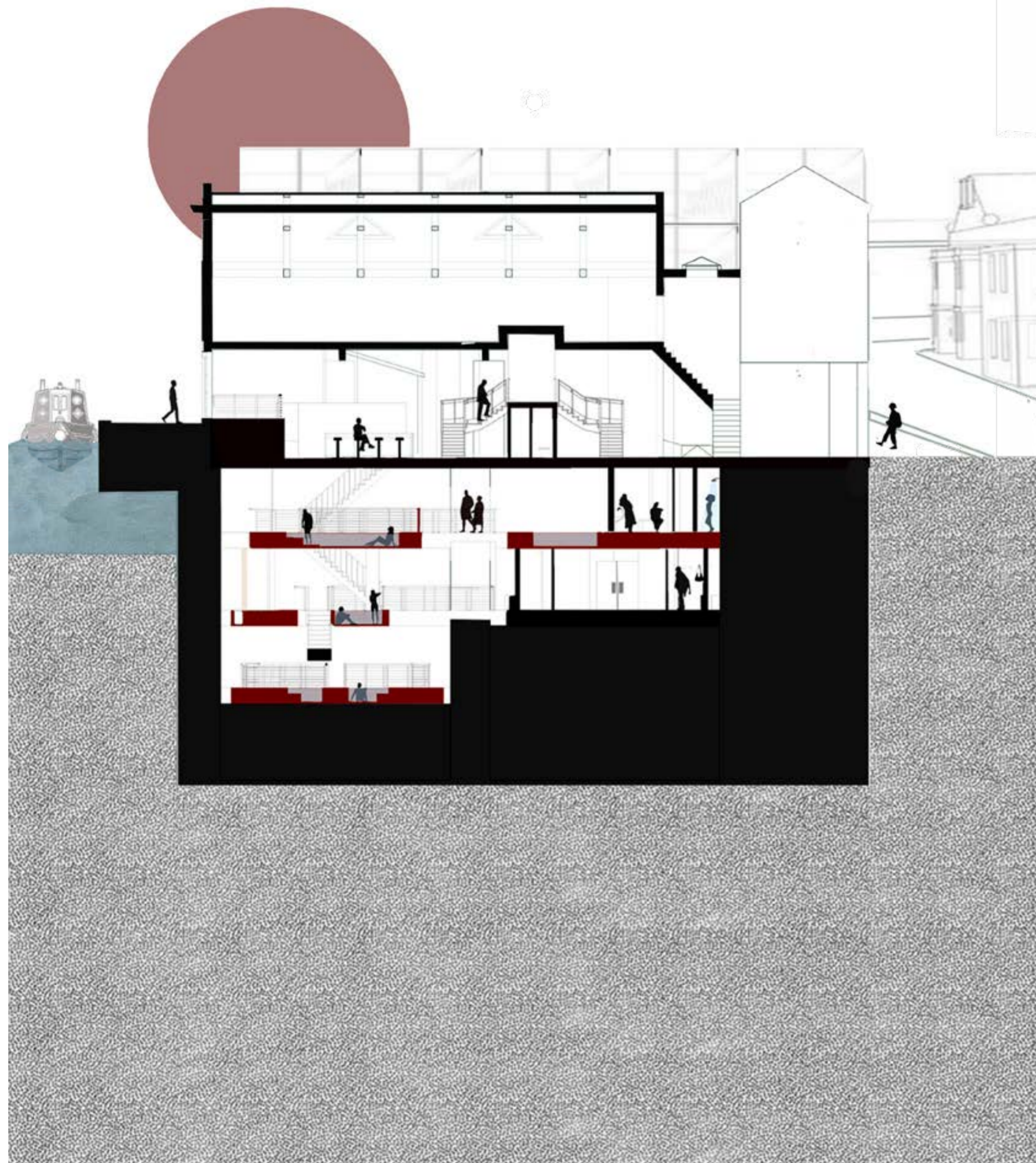
AI-generated imagery became part of the developmental process, helping reveal unexpected spatial divisions and alternative organisational strategies.



Circulation-materiality and social interaction testing through collaging:







**Living space:** I drew inspiration from industrial loft apartments, aiming to create a second home for barge workers that feels comfortable, grounded, and lived in. makes it feel like a place of rest rather than just fuction.

**Bathhouse:** My main reasoning behind my colour theory and choice of materials is based on the fact that barge workers are exposed to strong natural light on a daily basis, so a darker, more enclosed interior can create a calming contrast and provide visual rest.

**Ice well brick wall:** I decided to stick with the worn brick to maintain a raw, free form quality throught out the space.

**concrete:** Creates a clean minimal contrast with the brick, handles moisture well

**worn used wood:** Durability history, performs well and sustainable

**black metal:** Helps bounce light around darker, enclosed spaces.

**bamboo:** performs well in high temperature and environemntally friendly

**red ceramic tiles:** holds heat well, holds up well in compact

**Limestone:** Breathable, holds temperature well, warm touch.

**texile cushions:** comfortability living room feel

