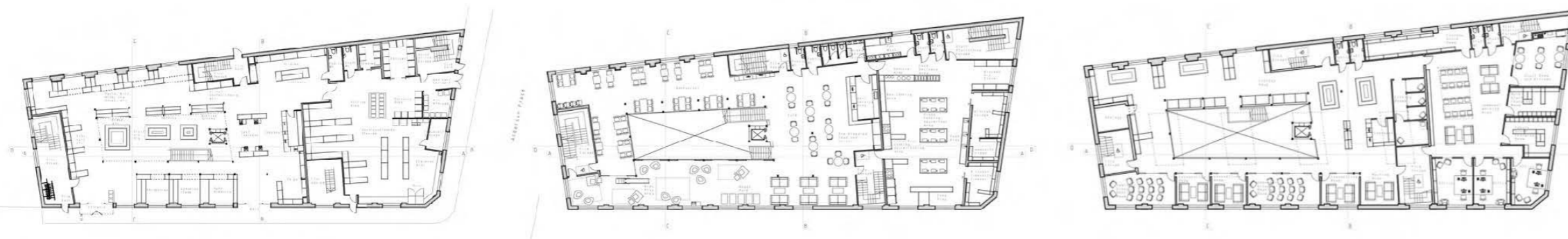




Rendered Visual of Supermarket Space



Rendered Section

# THE BISCUIT TIN - COMMUNITY CENTRE



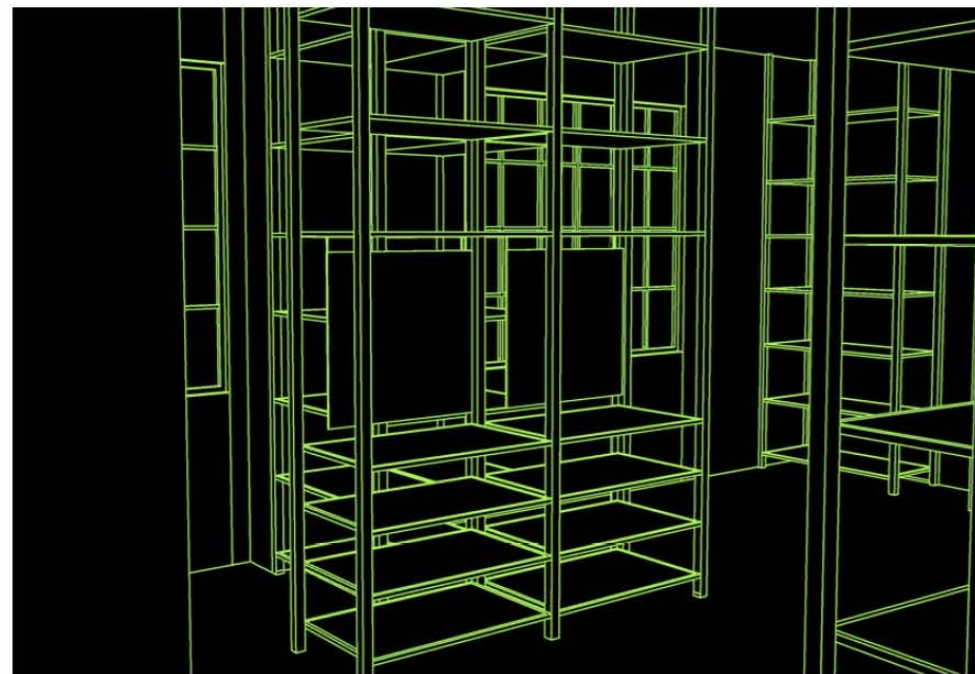
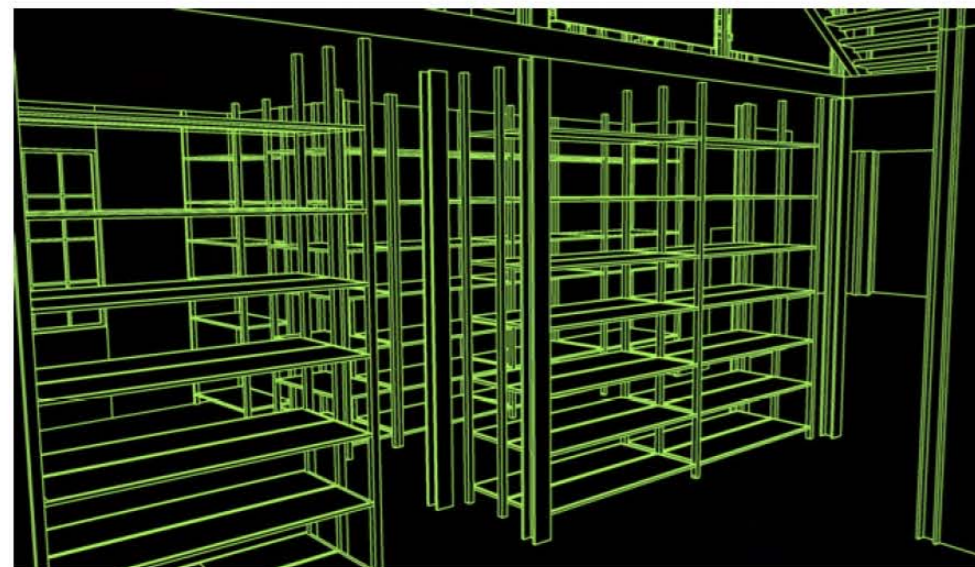
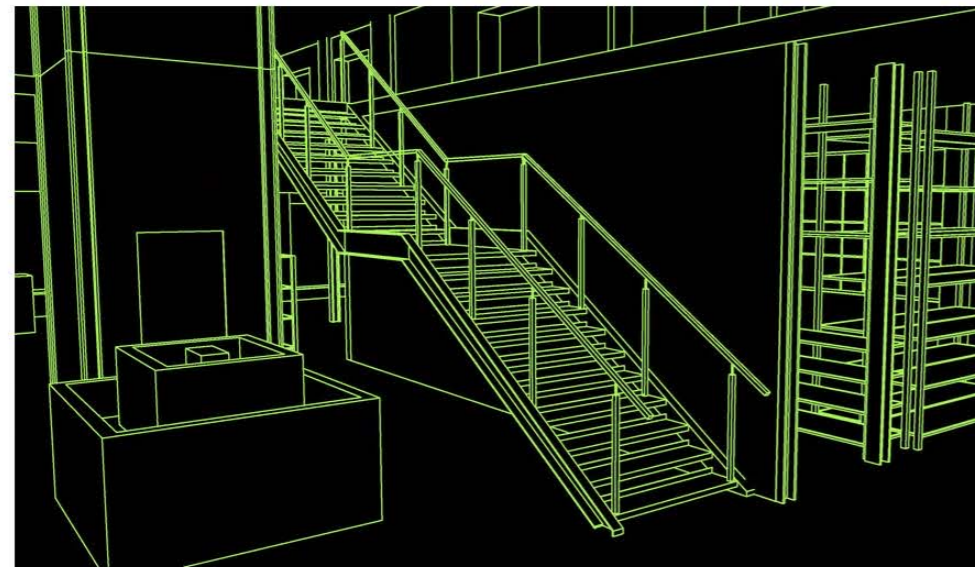
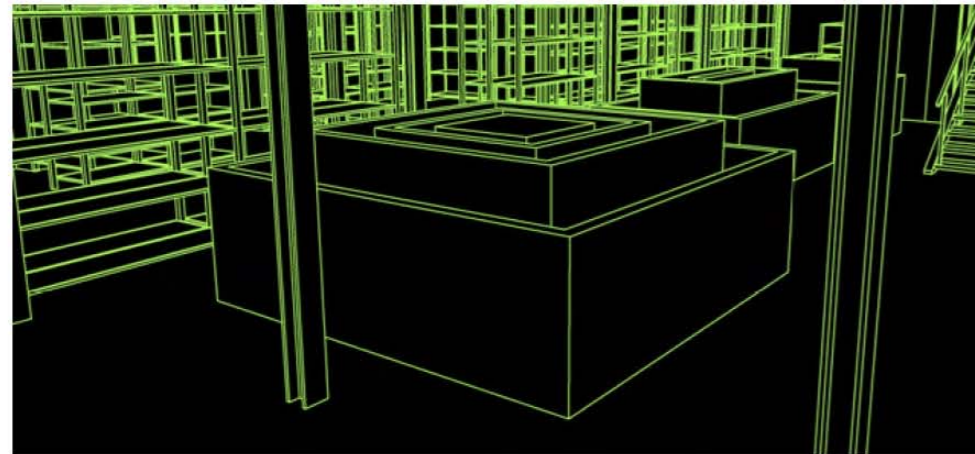
Final Major Project  
September 2021 -  
May 2022  
The Biscuit Factory,  
Leith

The Biscuit Tin is a community centre based around the issue of poverty and waste, in particular food poverty, which supports the community by offering a range of facilities in a space that integrates the community and alleviates the stigma associated with poverty.

The project came about after extensive research into food poverty in the UK and Edinburgh. The concept is inspired by the existing 1940s factory building and industrial style design. The design makes use of the original windows and skylights by providing an atrium space for natural light to flow throughout.



Concept Drawing of The Biscuit Tin Community Centre



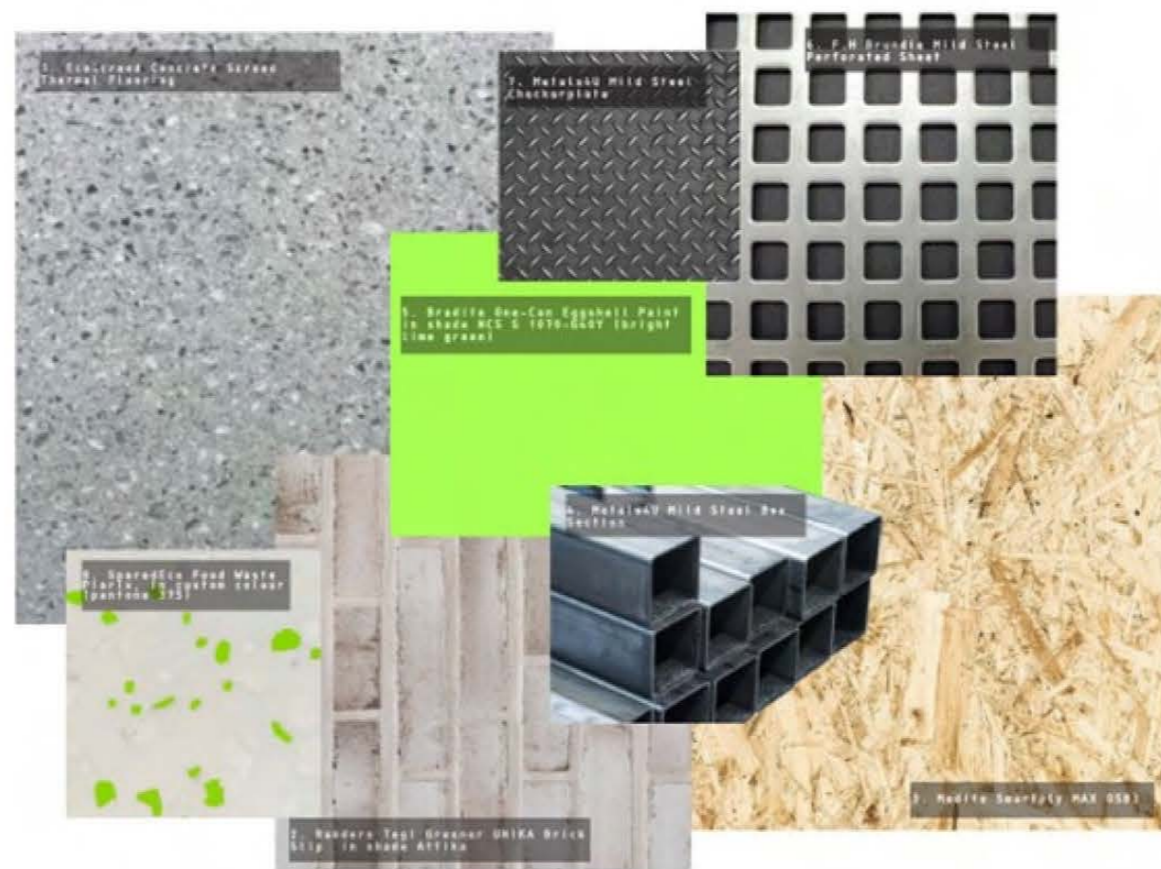
Edited SketchUp Model Images



Rendered Visual

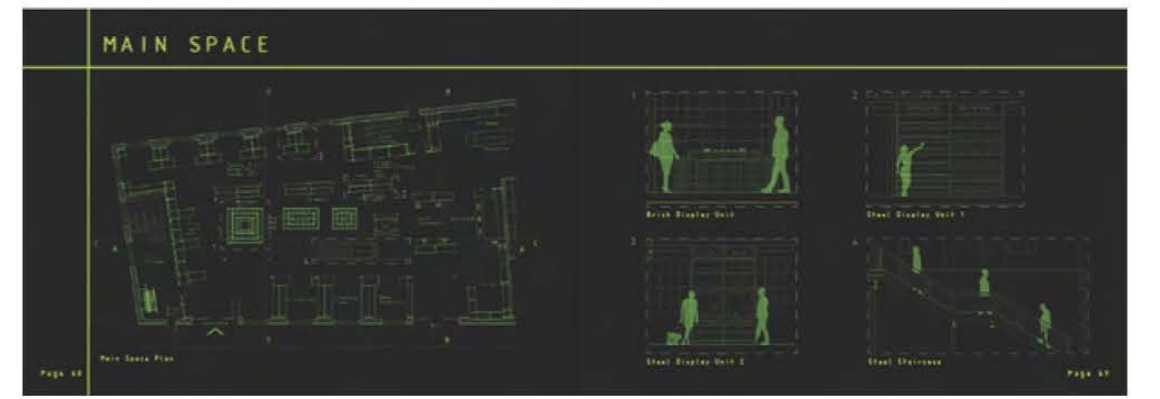
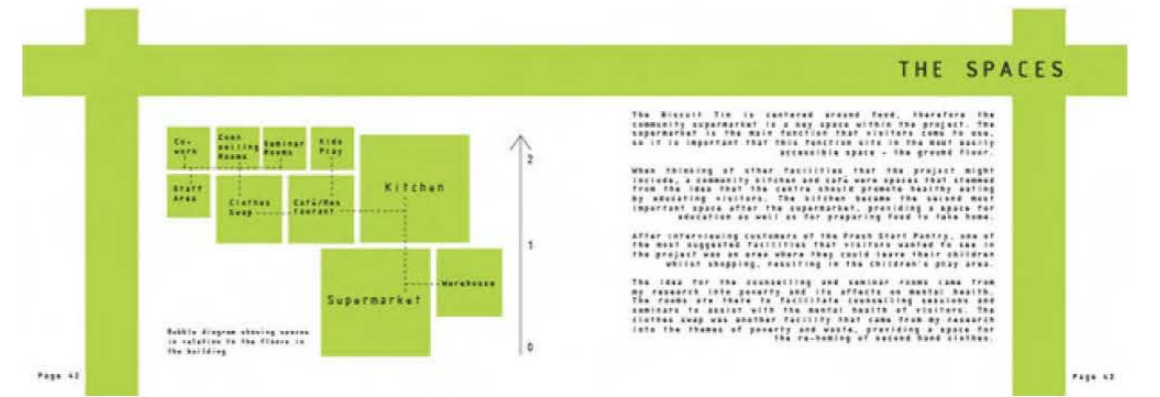
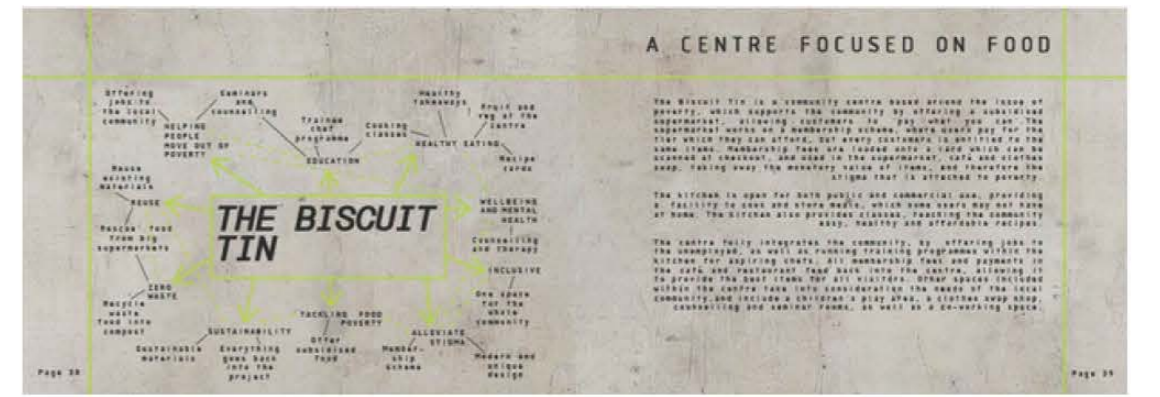


Rendered Visual

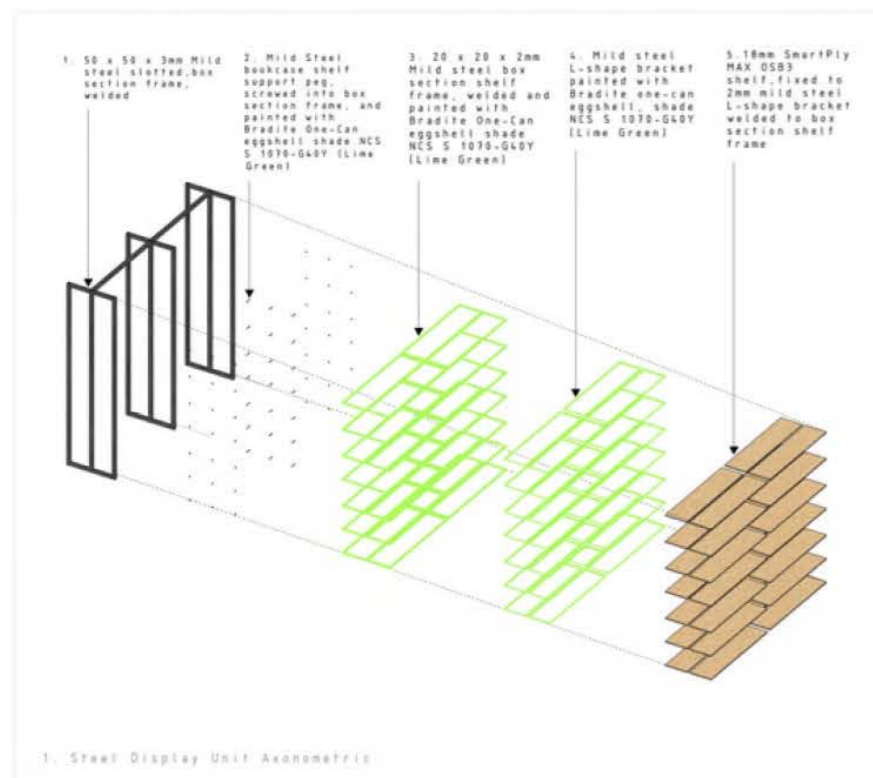


Material Palette

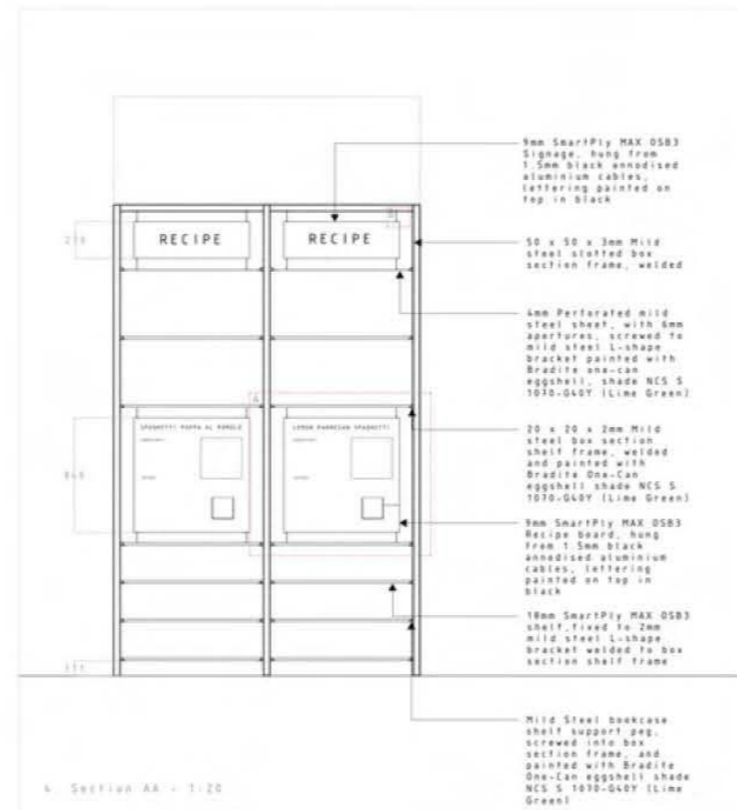
# THE BISCUIT TIN - COMMUNITY CENTRE



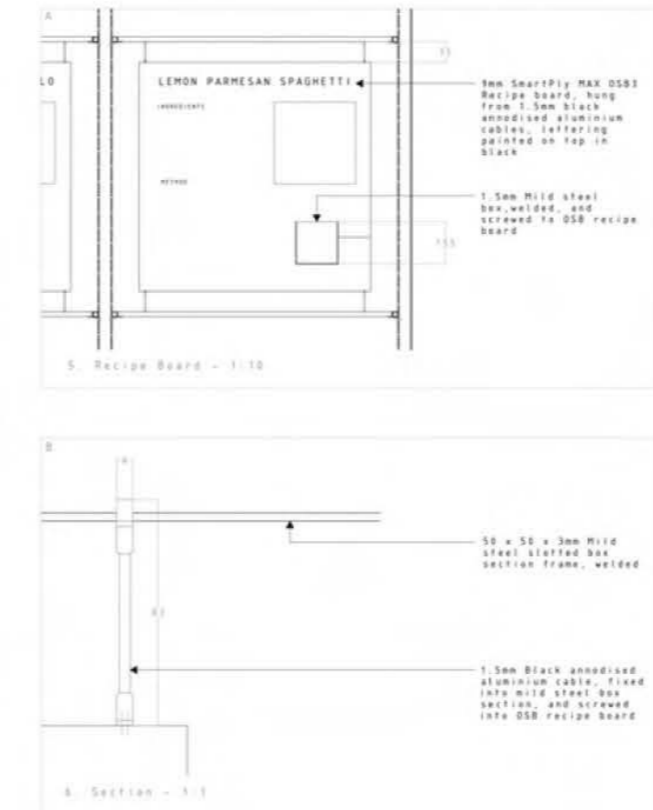
Sample Pages from Design Book



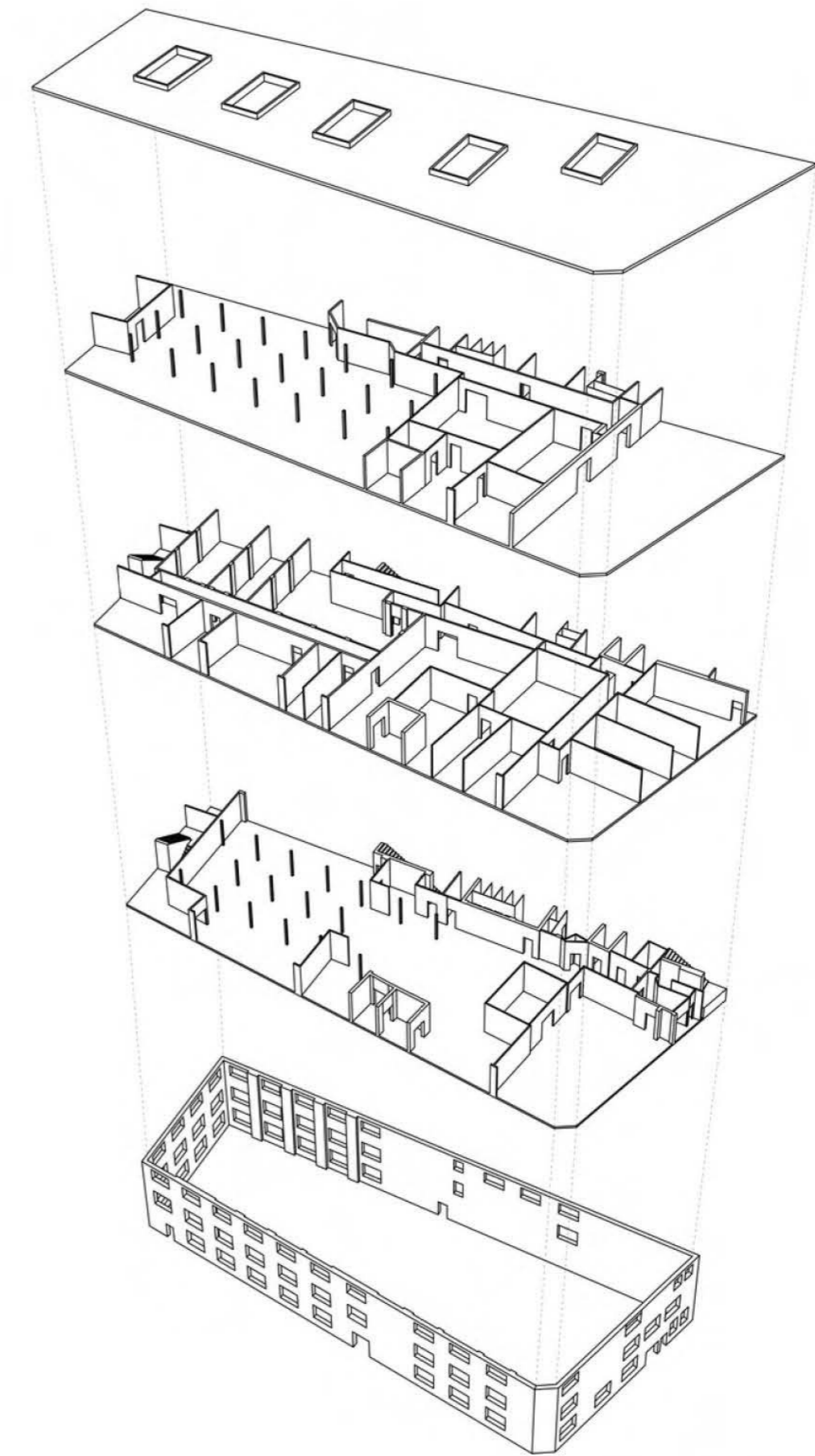
Rendered Exploded Axonometric of Supermarket Display Unit



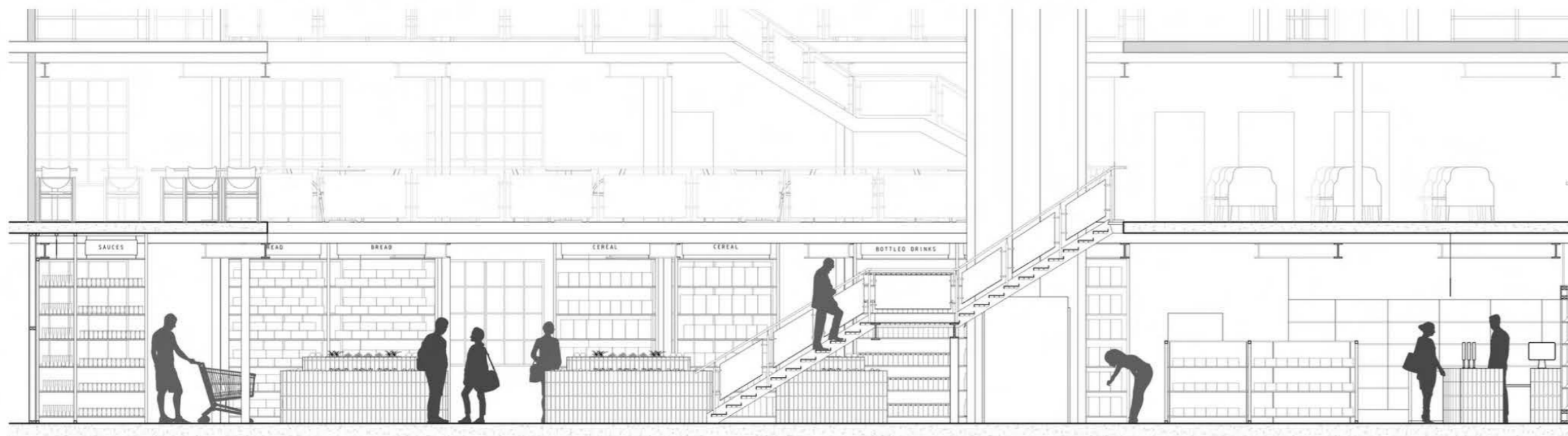
Detail Sheet for Supermarket Display Unit



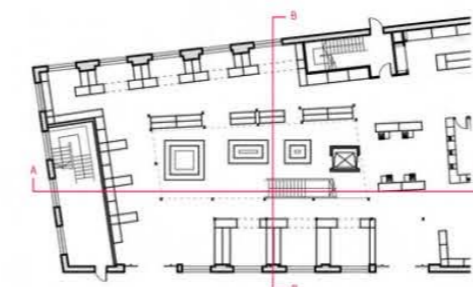
# THE BISCUIT TIN - COMMUNITY CENTRE



Existing Structure Exploded Axonometric Model



Supermarket Sections AA and BB



Supporting Image - Rendered Section



Supporting Image - First Floor View



Key Image - Supermarket Space

