

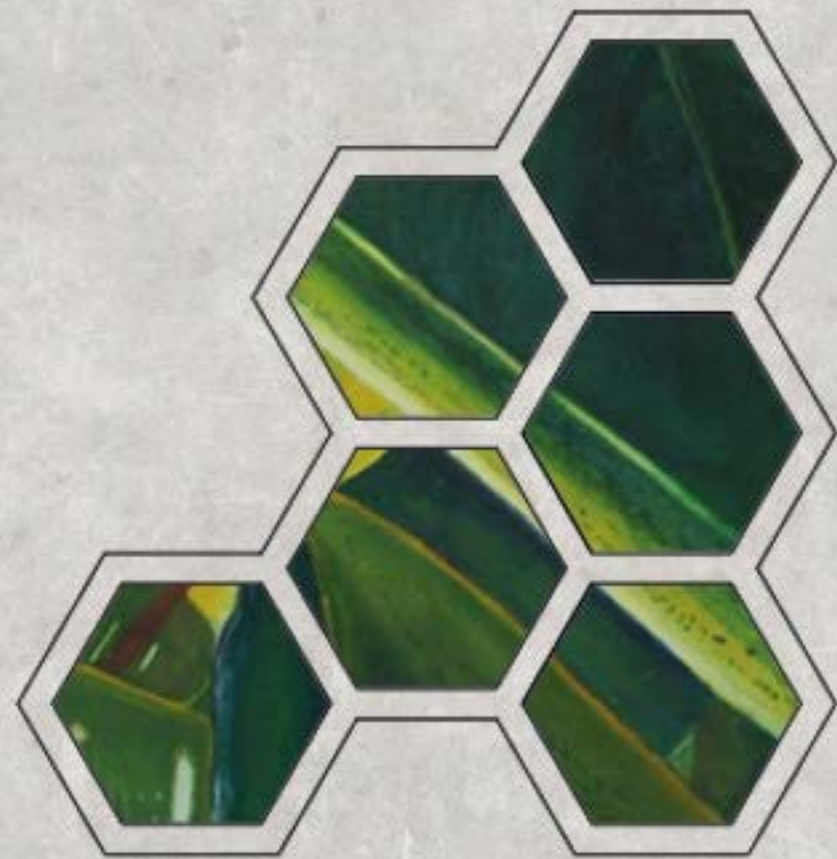
# THE REV

Home from home for Edinburgh College of Art students supporting creation and collaboration

The Rev - A home from home for ECA students supporting creation and collaboration.

## Project Reflection

*A design proposal drawing attention to the lack of interactions between disciplines at Edinburgh College of Art in the hopes that it might provoke a move toward a greater sense of community within the art school.*



## Project Brief

In short the project brief concerns the idea of creating a "home from home" for ECA students, providing a space for them to socialise and interact with their peers outside of classes, in an inclusive and comfortable environment. The design captures the spirit of ECA's historic Revels and biophilic design principles will be used to support the health and well-being of the space's inhabitants.

## Project Theme and Origins

This project's theme has arisen from the issue of the lack of adequate facilities on the Edinburgh College of Art (ECA) campus where students from the various disciplines can socialise and interact. In the past the University has focused on providing teaching and studio spaces for the separate disciplines but areas to gather as a creative community are largely non-existent. This project will tackle this problem and provide a social space for the ECA students allowing for improved interactions across the different programmes. This space will improve the student experience for the users, whilst supporting them in their studies and well-being.

Biophilic design principles will inform the design of the space, ensuring that the health and well-being properties of this can be utilised.

The project theme has therefore evolved into becoming a 'home from home' for ECA students and will play with the idea of belonging and different perceptions on the understanding of "a home". These perceptions will allow the separation of the space and inform the different functions. 'Living Rooms' will be located on every floor of the building, each tailored toward a different school within ECA using playful stereotypes to inform design decisions. The historic ECA Revels have been a contextual inspiration behind the project theme so there will also be various points throughout the building that encourage interactions between the different disciplines, recreating the creativity and collaboration showcased in these extravagant celebrations of old.



## Building History

Designed by Ralph Cowan and built in 1961, the North East Studio Building, formerly known as the Architecture Building, was designed to house Edinburgh College of Art's Architecture and Town Planning Departments. It was a part of the redevelopment of the ECA campus which took place in the 1960s and 1970s. As well as studios and teaching space, Cowan's design also housed common room and dining facilities for the students.

Cowan himself experienced life as a student at the Edinburgh College of Art, studying architecture. He then proceeded to teach at the college during the 1940s and 1950s before being appointed as head of the school of Architecture in October 1955. The image below shows Cowan attending one of the famous ECA Reveals.

The North East Studio building holds no listing status however the ECA main building and Hunter Building to its south hold grade A and B listed status respectively.

The building was renamed following the departure of the School of Architecture from the space when they relocated to Chamber Street in 2016.

## Site Analysis

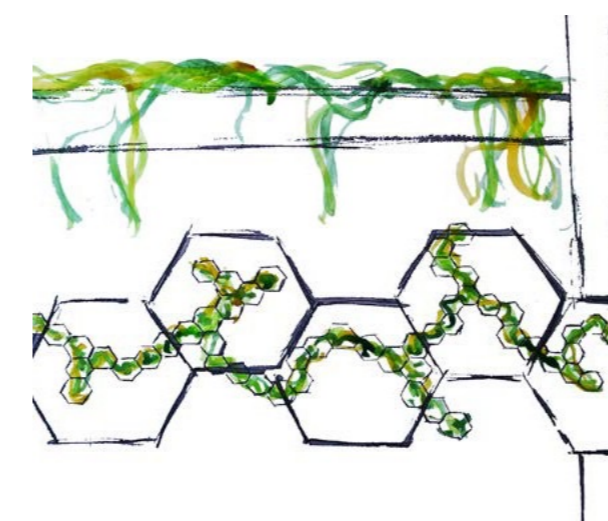
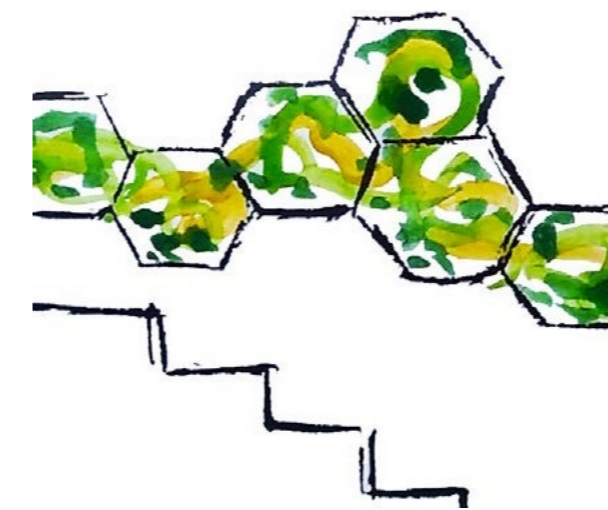
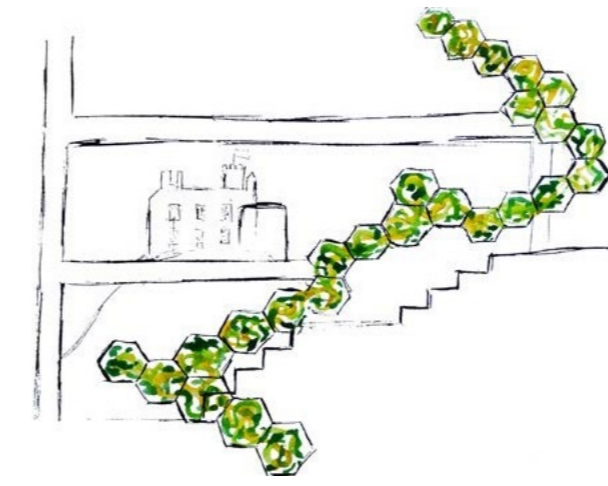
The building itself is essentially a concrete block with large amounts of glazing. Since being built in 1961, few physical changes have been made to the building. Over the years its uses and functions have transitioned to house students from other schools within ECA, with it most recently becoming home to the Interior Design Department. However it has never deviated from its original function as an educational facility. The common room and dining facilities which were part of Cowan's vision in 1961 are no longer present in the building.

Despite this, the building remains a central hub on the Lauriston Campus with it being home to the ECA Shop, Repographics Department and the historic Wee Red Bar so the space is therefore accessed by a large proportion of the ECA community on a daily basis.

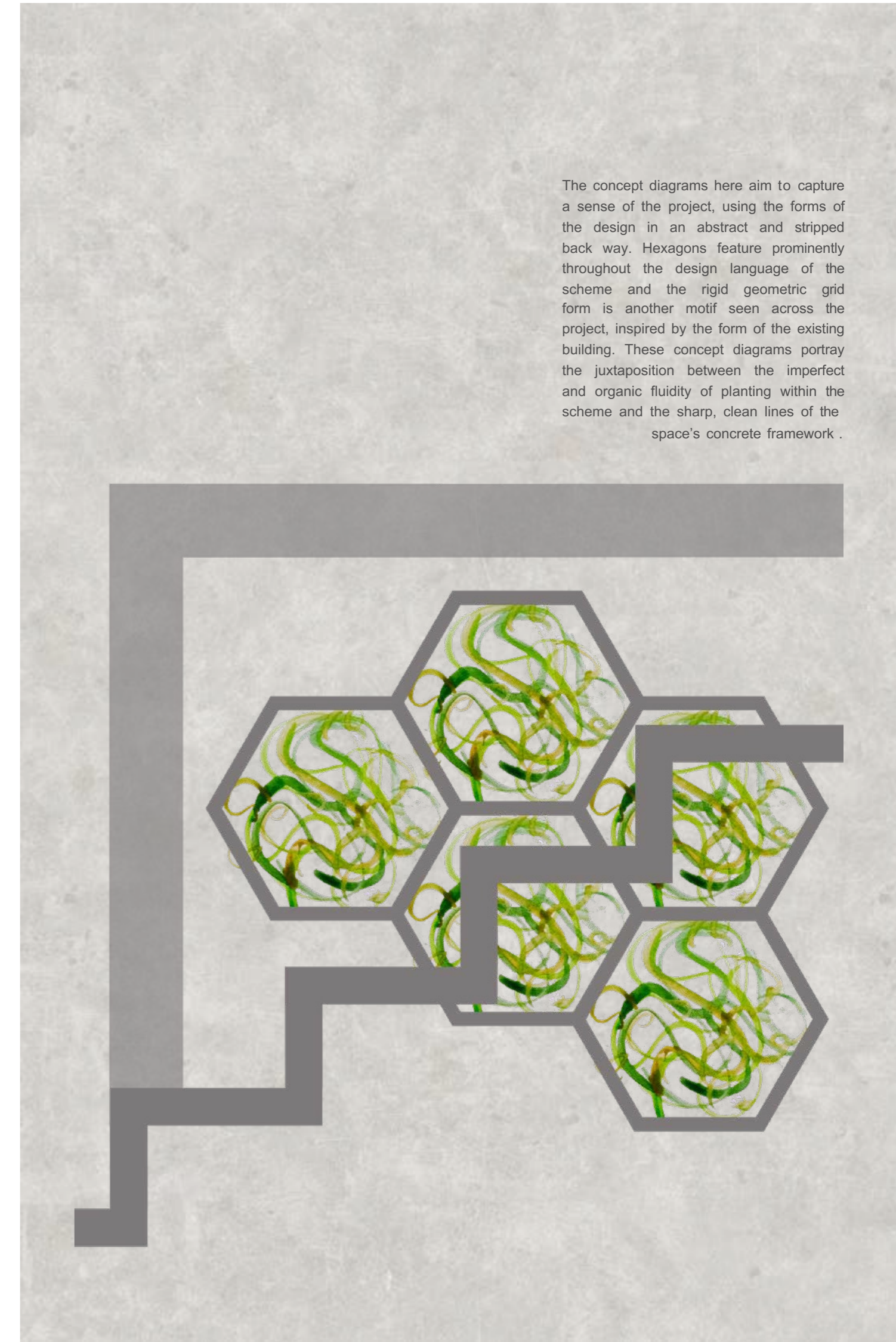
Prior to the pandemic there were plans to demolish the North East Studio Building including the Link Building which joins the building to the ECA main building and Hunter Building. These proposals were a part of a redevelopment programme for the Lauriston Campus. It was felt that demolishing the link building would become a costly and difficult task. This triggered proposals for the remodelling of the two entities, making more efficient use of the entire footprint of the building.

These plans were halted due to the uncertainty caused by the pandemic, more recent plans, including those outlined in this design book, look at the redevelopment of these spaces rather than the dramatic step of demolition.

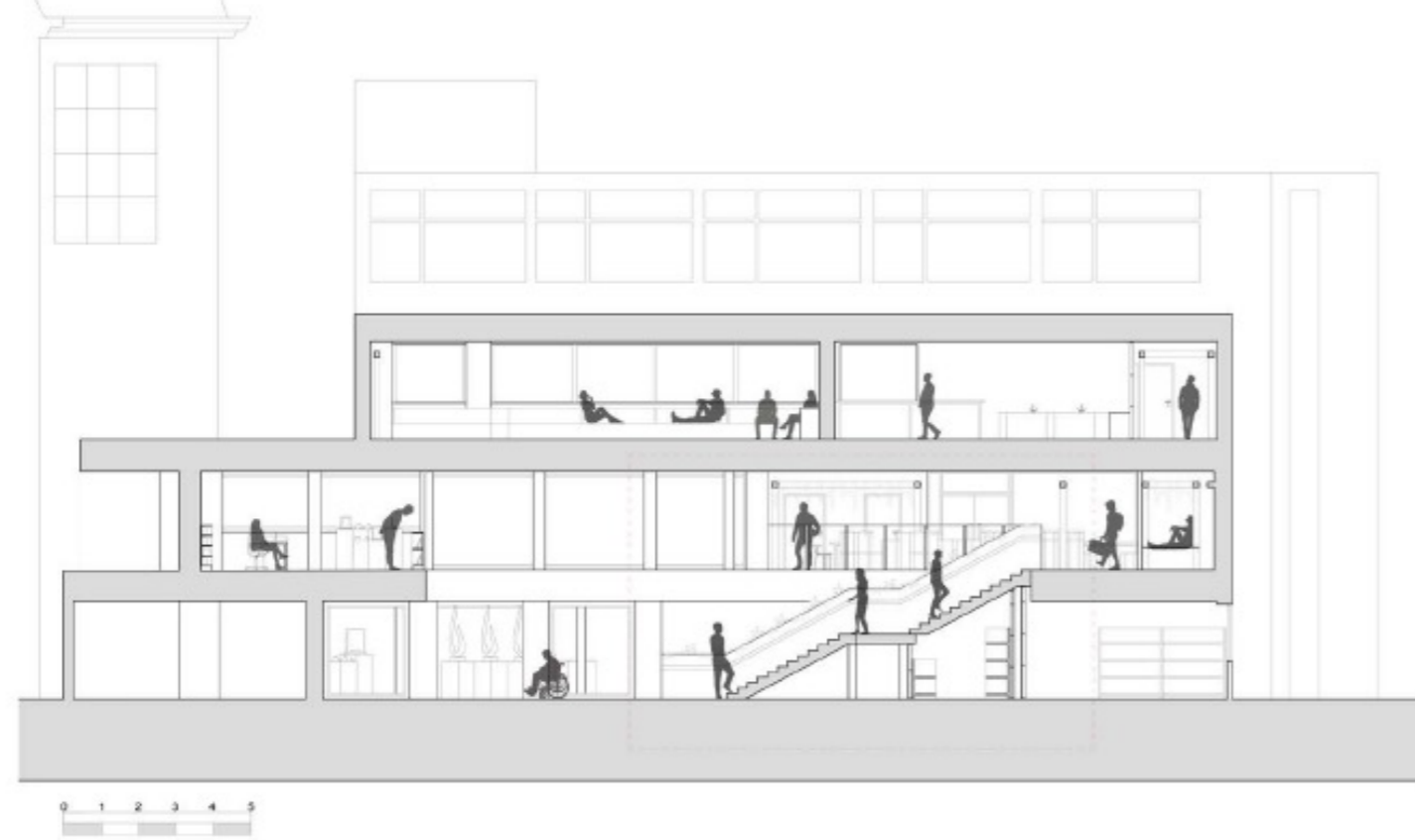
## Concept Imagery



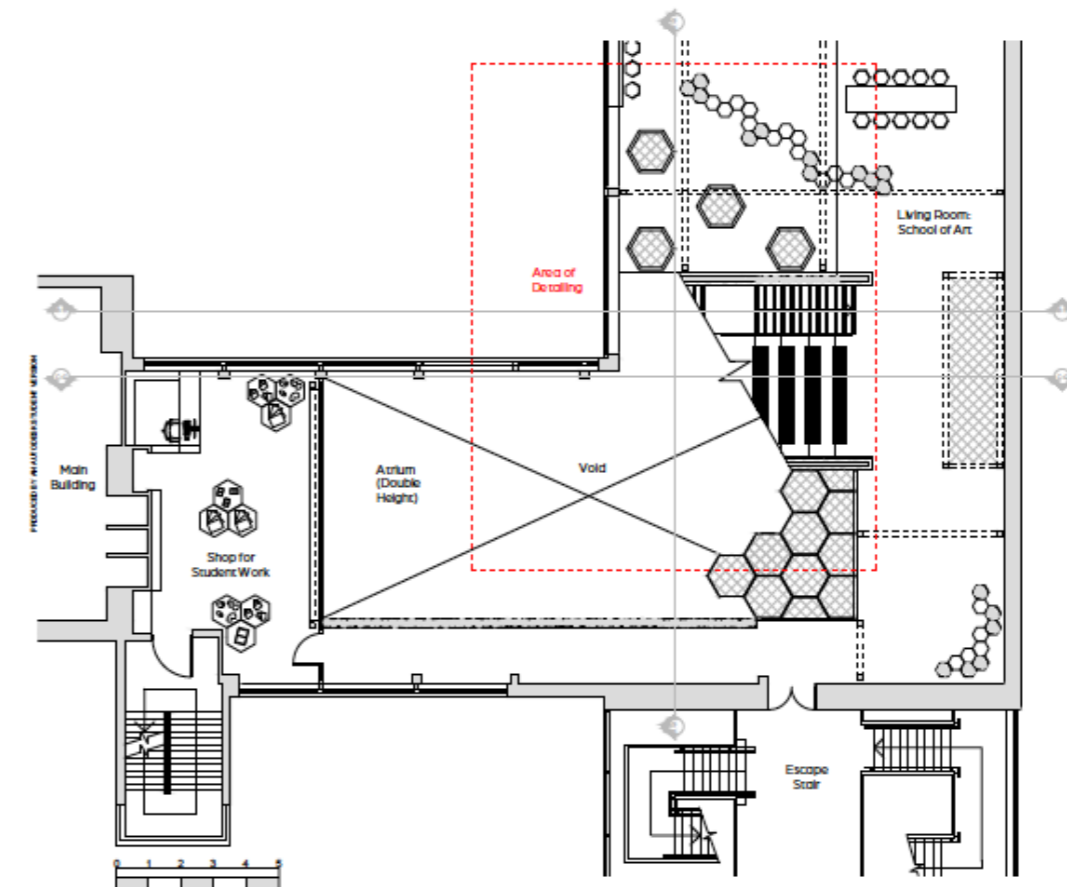
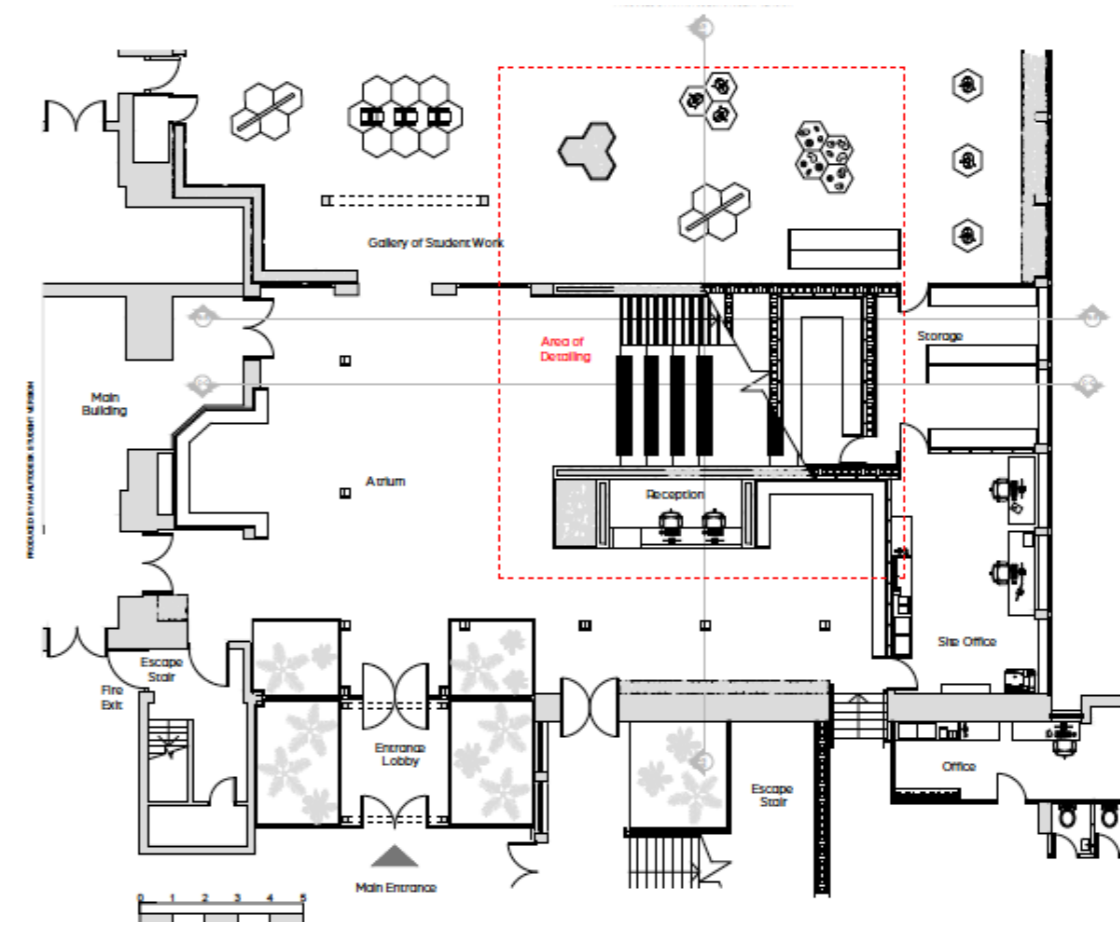
The concept diagrams here aim to capture a sense of the project, using the forms of the design in an abstract and stripped back way. Hexagons feature prominently throughout the design language of the scheme and the rigid geometric grid form is another motif seen across the project, inspired by the form of the existing building. These concept diagrams portray the juxtaposition between the imperfect and organic fluidity of planting within the scheme and the sharp, clean lines of the space's concrete framework.



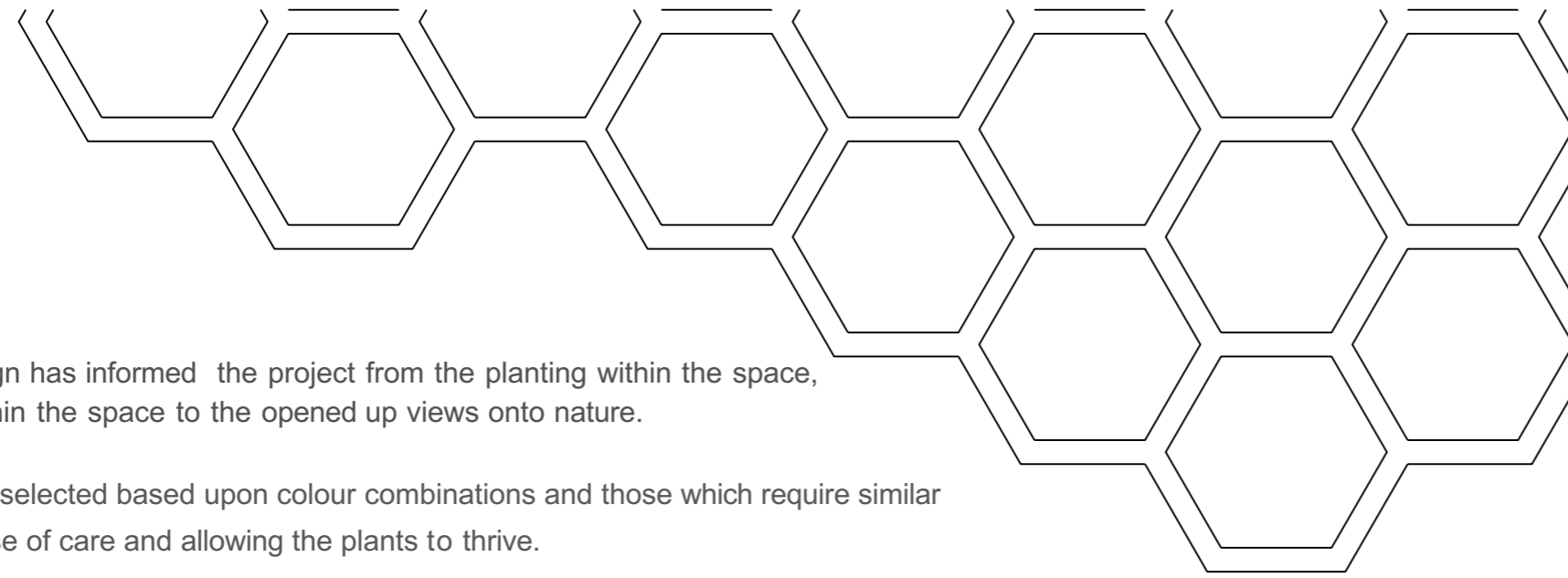
## Sections



## Major Space Plans



## Biophilic Design



The principles of Biophilic Design has informed the project from the planting within the space, the materiality and textures within the space to the opened up views onto nature.

The plants specified have been selected based upon colour combinations and those which require similar conditions, allowing ultimate ease of care and allowing the plants to thrive.

- Planting Combination 1 consists of a variety of plants with contrasting heights to add to the verticality of the space.
- Planting Combination 2 consists of a tropical collection of plants to make a statement as people enter the building. These prefer arid conditions so will tolerate going without water.
- Planting combination 3 consists of a variety of trailing plants in shades of pale/ yellow green, all of which are fairly resilient to neglect.

1



Bird of Paradise



Kentia Palm



Umbrella Plant



Arrowhead Syngonium

2



Rubber Plant



Musa Tropicana



Snake Plant



Livistona

3



Tradescantia Quicksilver



Philodendron Scandens



Spider Plant



Golden Pothos

## Key Materials

Materials to be used in the main space of project. From top left clockwise.  
 Exposed Concrete  
 Polished Concrete  
 American Black Cherry  
 Cork  
 Zinc  
 Pressed Timber Effect Concrete



Key Space Visual

