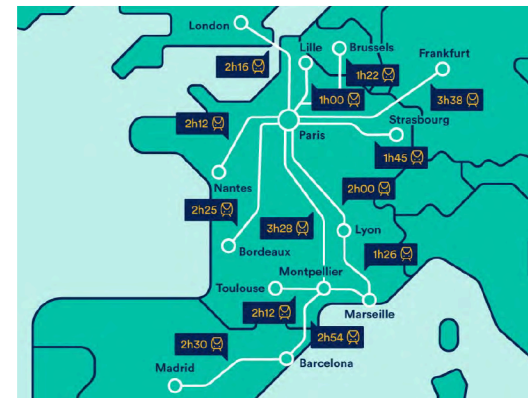


## CTGV: Covid Train à Grande Vitesse

Ever since the beginning of Covid-19 Pandemic in march 2020, our life has changed dramatically. Doctors and healthcare workers are risking their lives to be at the frontline fighting the virus. This project was inspired by this event, the design idea is to design the interior of TGV train to be a hospital train to transfer Covid-19 recovery patients to different location around France. The design proposal is focused in designing a better working environment for medical and train staff, to supporting them both physically or mentally while being inside this train. The design focuses on creating better working environments to support the staff physically or mentally.

Colours and materials play an essential role in the design; categorising spaces and creating different types of atmosphere throughout the train.

The layout improves flow between each carriage and provides flexibility to support the work-life balance of the medical staff.



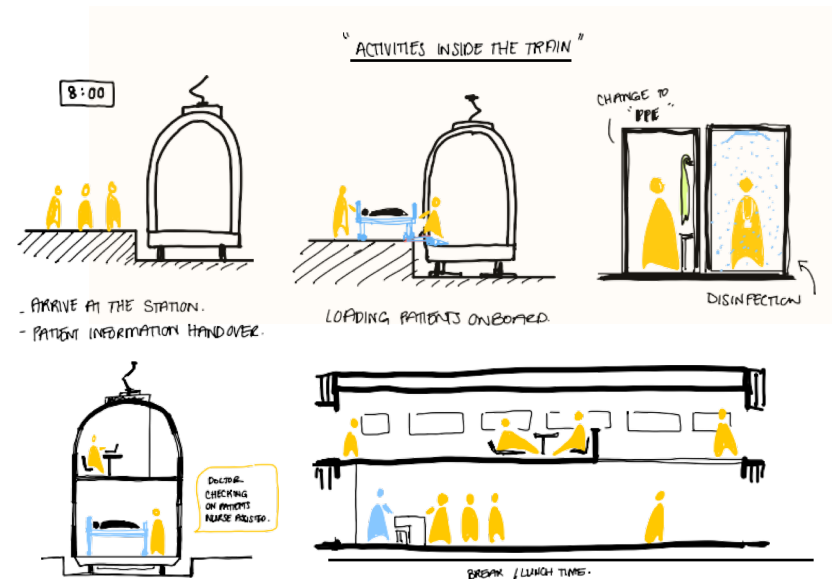
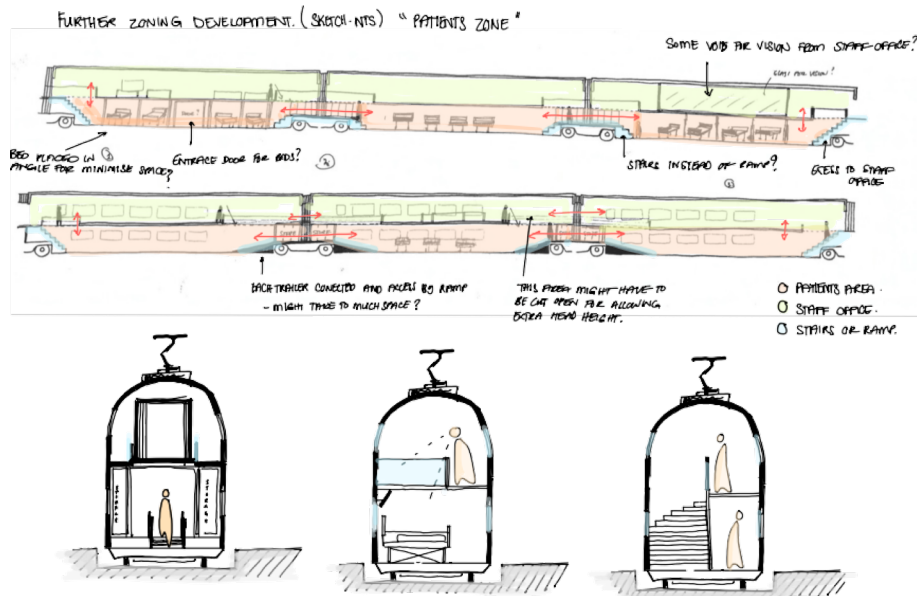
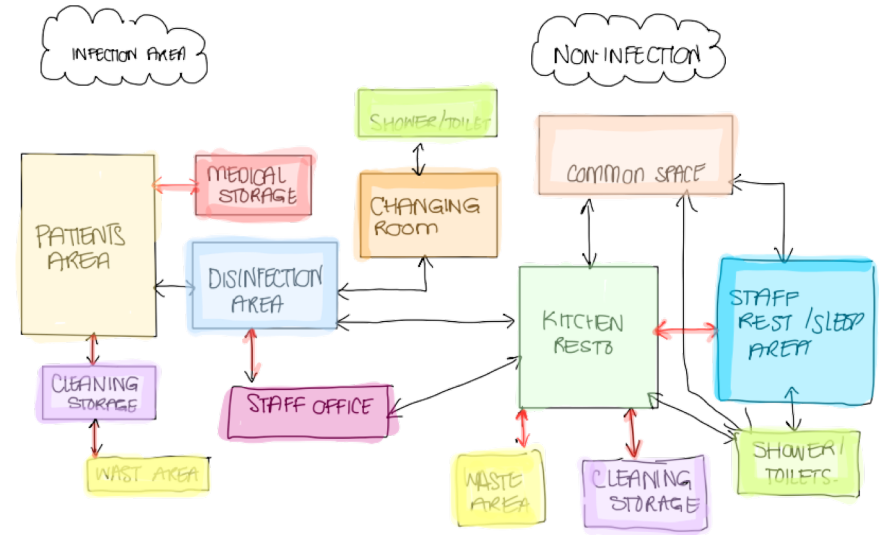
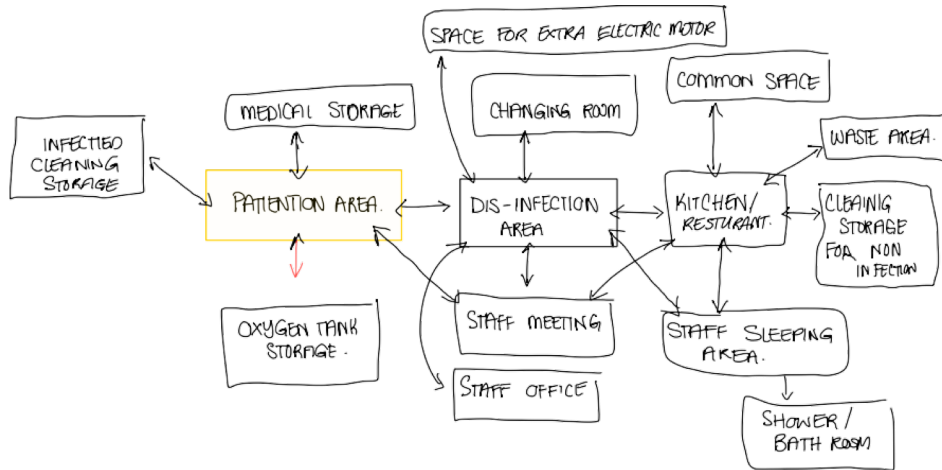
<https://www.thetrainline.com/trains/france#map>

Connections

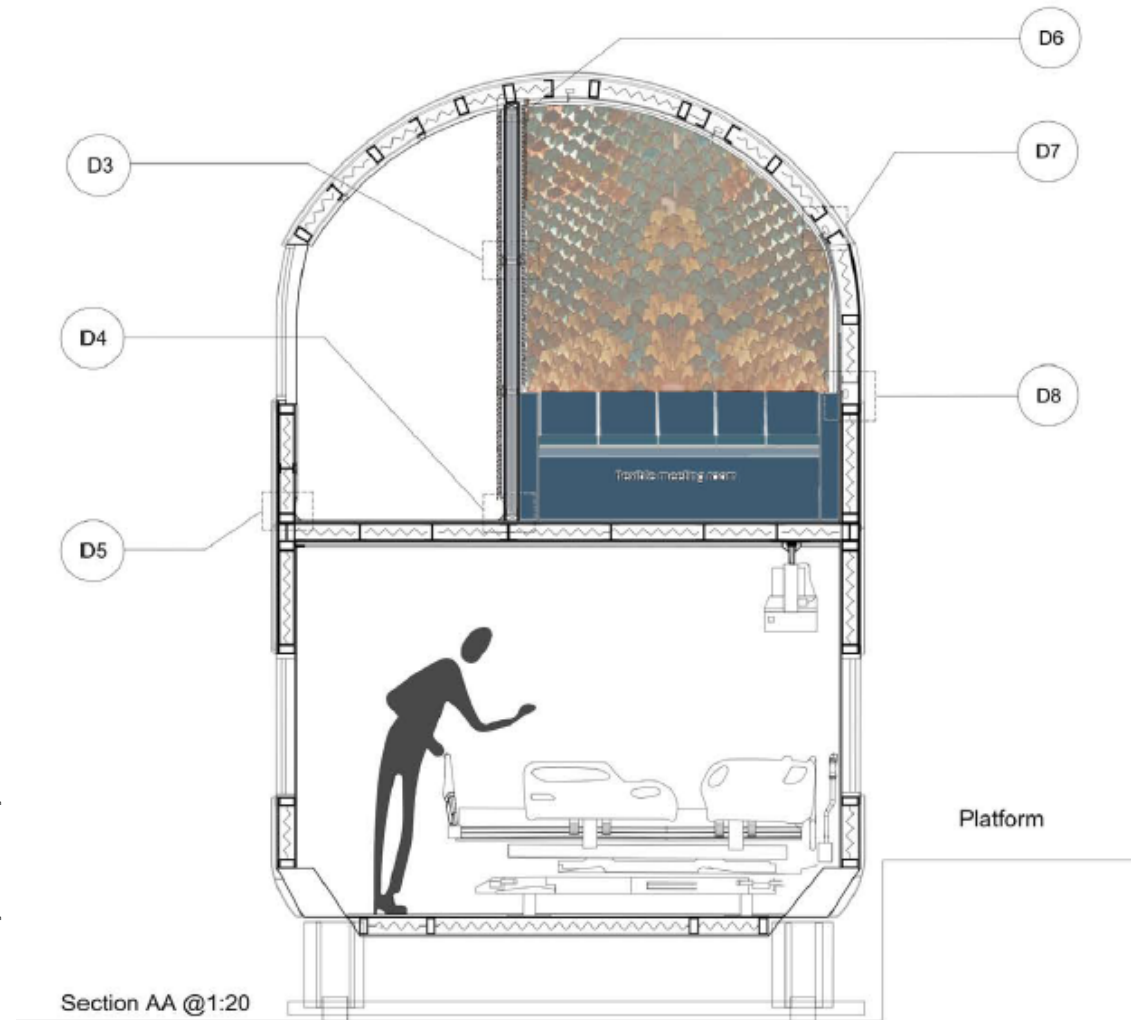
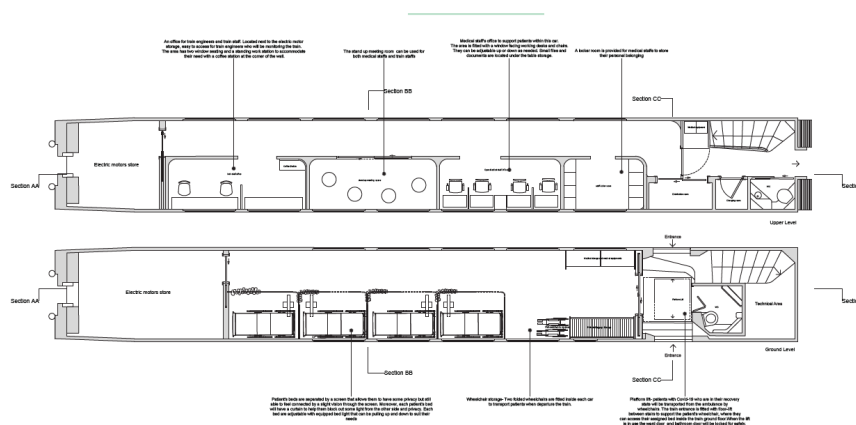
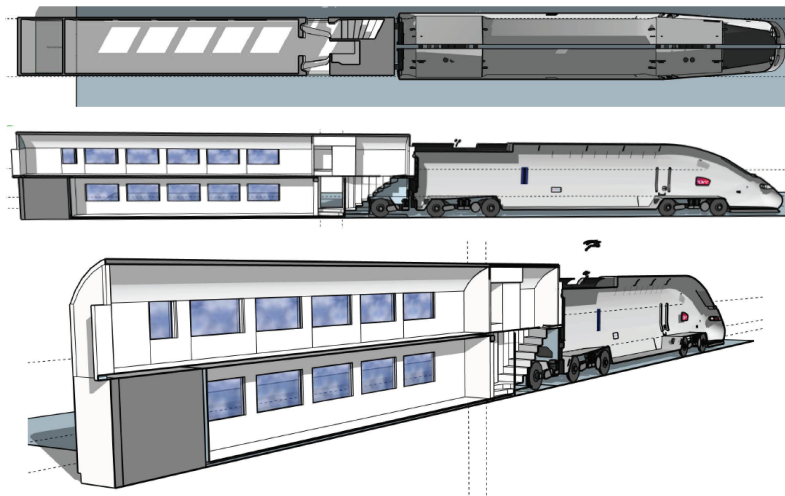
# DESIGN DEVELOPMENT

2020-2021

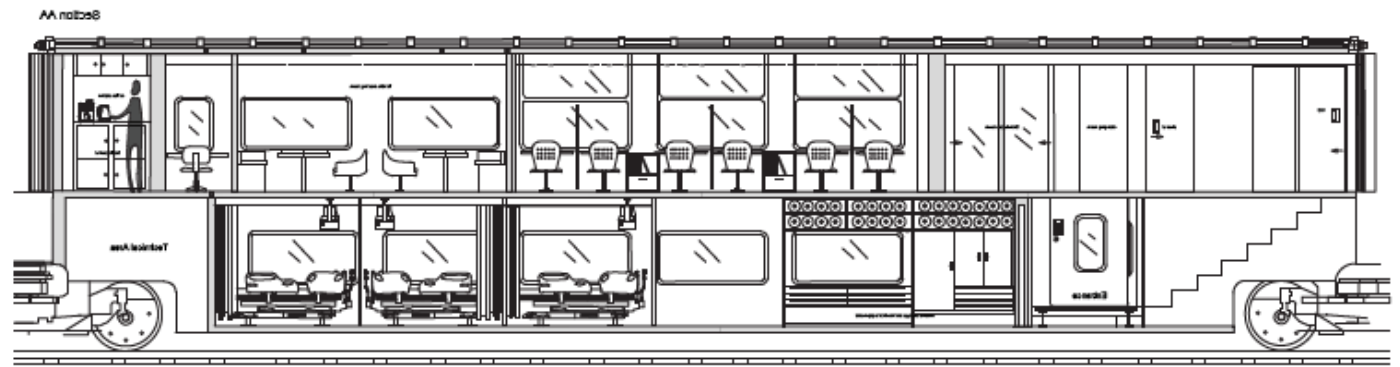
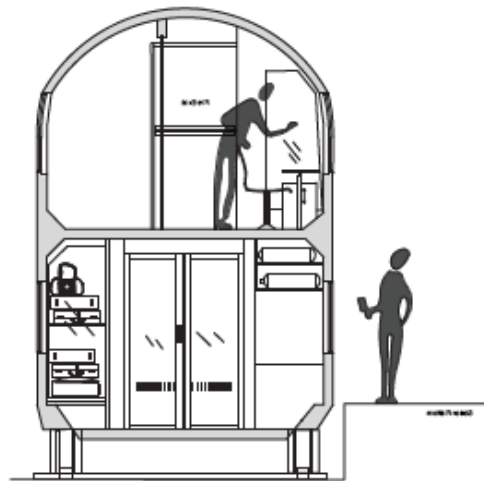
Zoning



Adjacency diagramme to think about the layout of the train as a whole and how each space connected. Moreover, the illustration helps to imaging the activites that might been involve inside this train.



201	Project Name : <b>COVID Train à Grande Vitesse.</b>	Drawing (Title): Train Car 1 - Patient Ward and Staff Office	Name: <b>Surimas Thamthan</b>	Page:
Drawing Number : 0011_0007		Scale: 1:50 @ A2	Date: 11/04/2021	Course Name: BA (Hons) Interior Design (FY 2020-2021)



Train Car 3 and 7 layout is similar to car 2 and 6. It connected to train car 2 and cafe bar.

Main Space Elevation AA

