

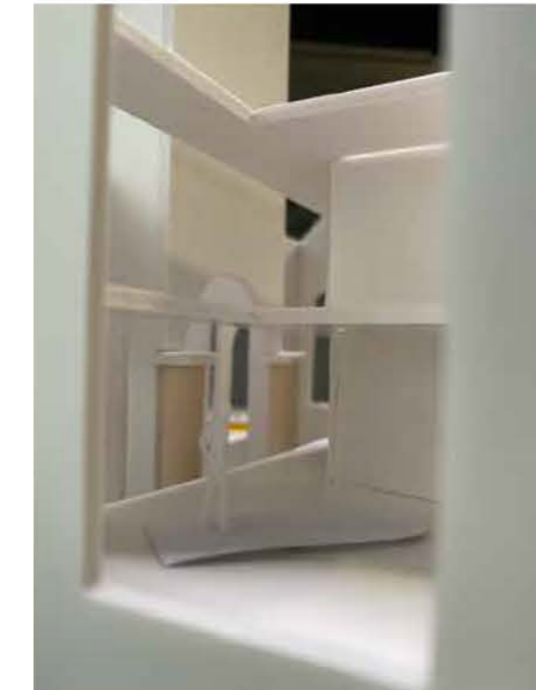
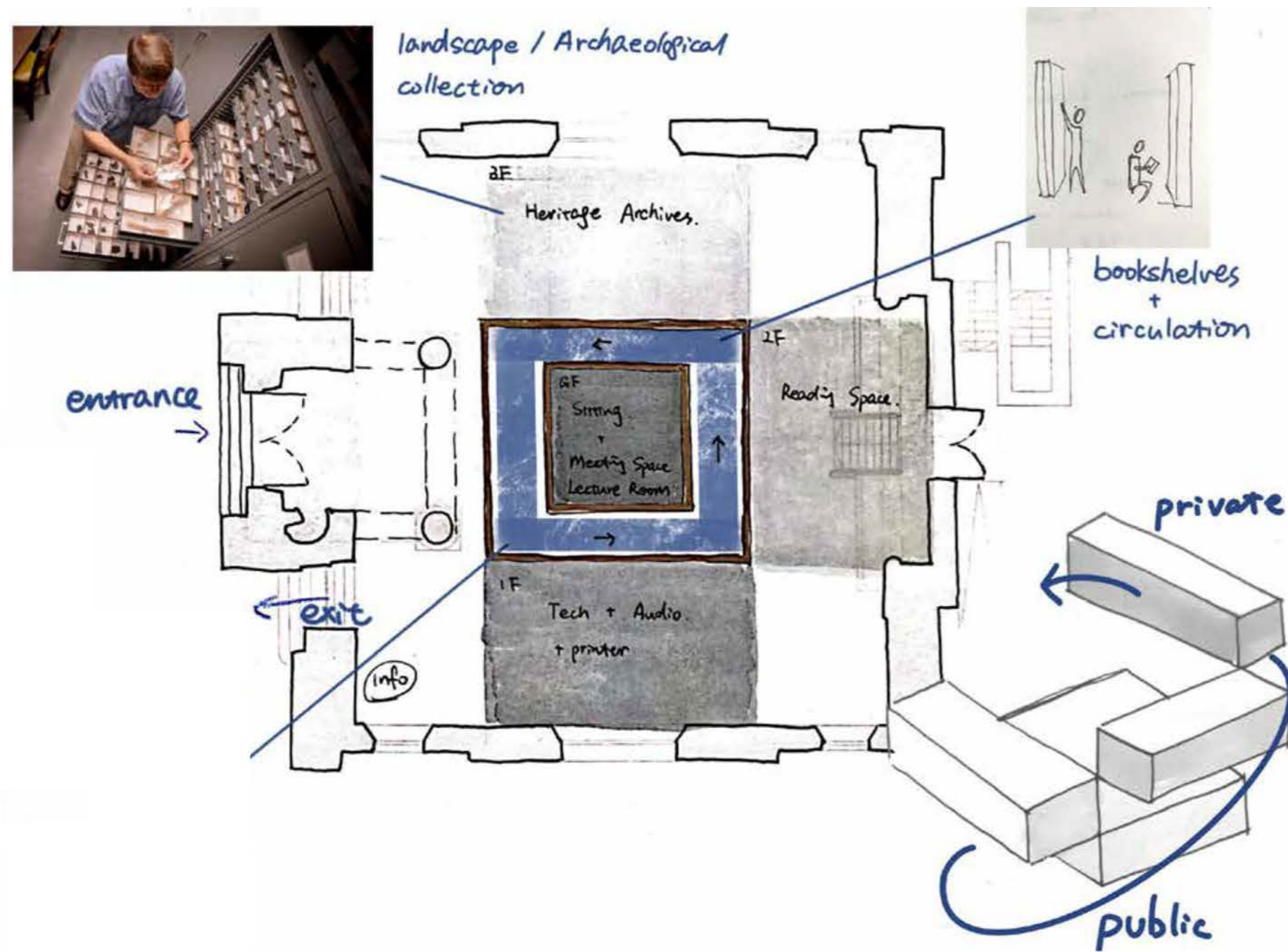
# A Library for Archaeology

Model 1:50



# Concept & Strategy

## Sketch Model 1:20 Scale



My initial idea was to combine the existing ruins of the site, with a modern intervention to create a specialist library to connect people interested in archaeology and local history. The centre of the library is a corridor made up of bookshelves, with different functional zones distributed around it.

The 1:00 scale model helped me to analyze the interior space at the initial stage, exploring items such as the relationship between the existing windows and the proposed floors. In further sketch plans I removed the floor shown nearest to the stain glass windows to accentuate and celebrate these original features.



# Concept & Strategy

## Design Section

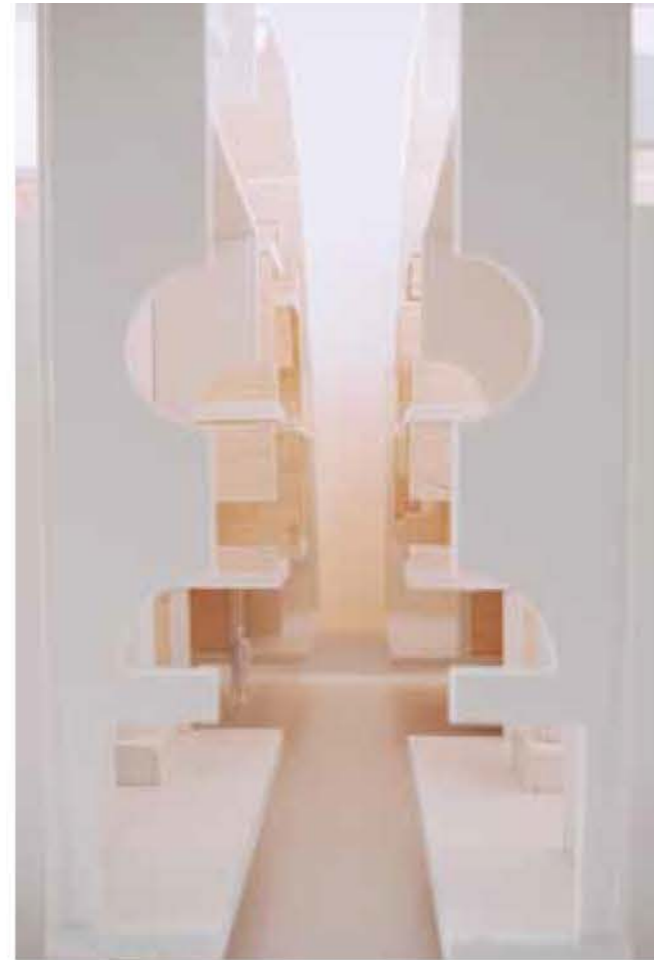
Functional zoning transitions across floors from public to private with heritage archives protected on the top floor.

The proposal excavates the existing archaeological secrets of the site, by exposing the old cobbled street under the ground floor. The existing ground floor is partly removed to allow visibility and connections, as well as creating more usable height.



## Final Model

1:50 Scale.



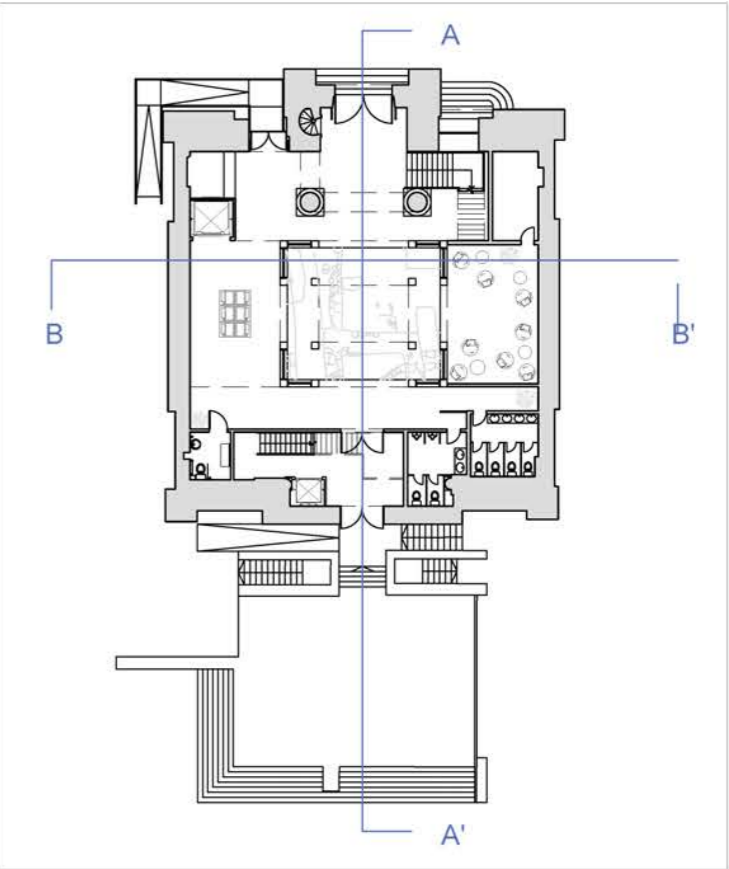
In this final model I used light wooden boards and foamed PVC with different thicknesses.

The cut line of the model follows Section AA, showing the stairs, the layout of the bookshelves and the connection between the internal ground floor and the archaeological site.



# Section AA

Scale 1:50 @ A1



DRAWING TITLE	INTERIOR DESIGN 3B - LIBRARY PROJECT
LOCATION	TRON KIRK, 122 HIGH STREET, EDINBURGH
DESCRIPTION	SECTION A-A'
DATE	18.4.2021
SCALE	1:50@A1
NAME	NOVA MA

