

A Community Library Manifesto

The Library will be a welcoming and accessible intergenerational meeting place imbued with a sense of democracy. Open to all, it will host a wide range of activities for the local community including study, reading, educational programmes, seminars, book groups, volunteering networks, and creative classes.

Concept

A central, tree-like core was considered at an early stage, and has developed through multiple iterations.

From this central tree structure, staggered floors project, floating free from the external shell walls.

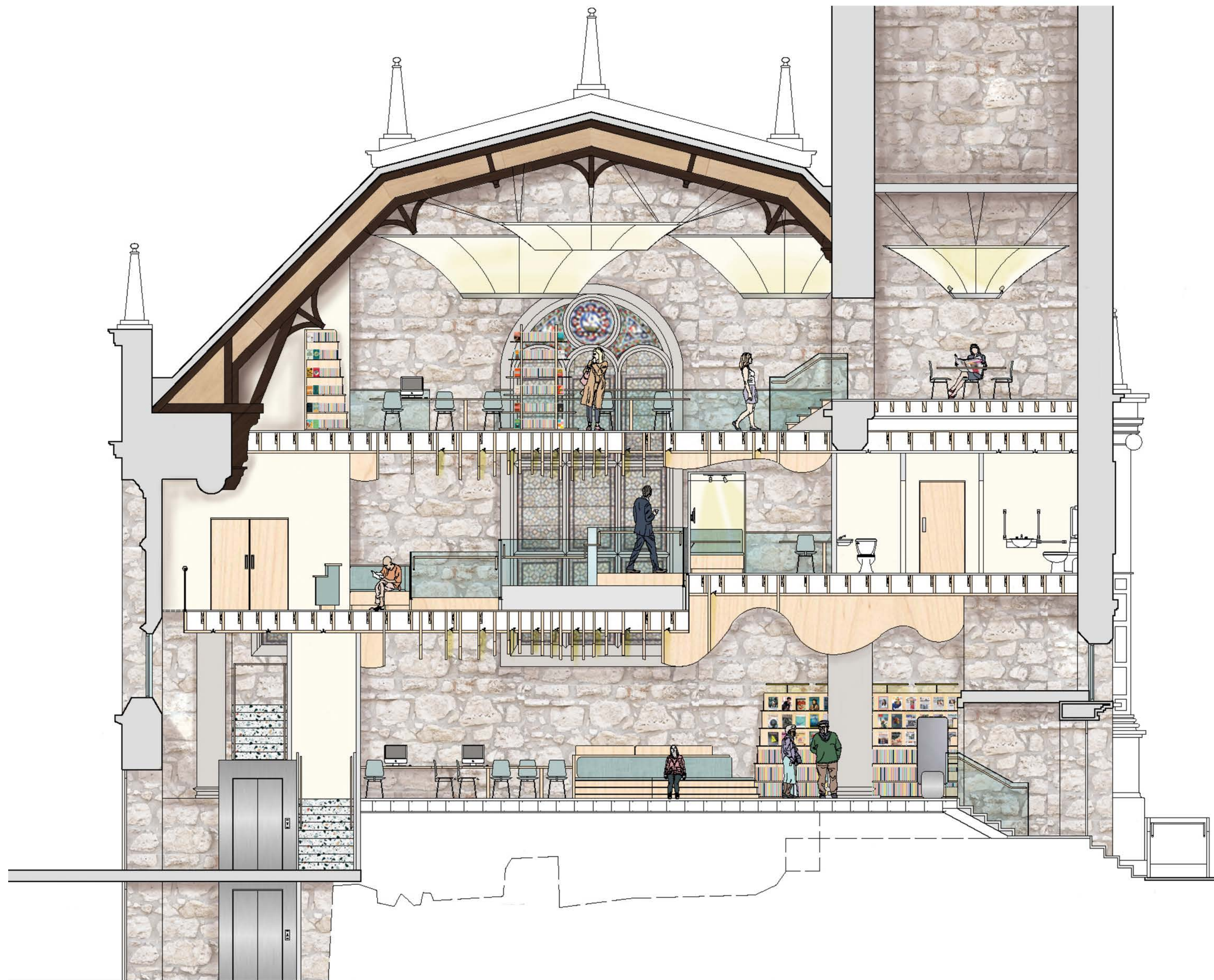
From a large informal ground floor, the spaces become increasingly more enclosed and formal as library users ascend.

The design language is largely influenced by organic, free-flowing forms. The bookshelves and seating island are both inspired by topography. Maple veneered plywood is used throughout the Interior, and the representation of the materials were key in the creation of the models and drawings.



Proposed Section CC

Not to Scale



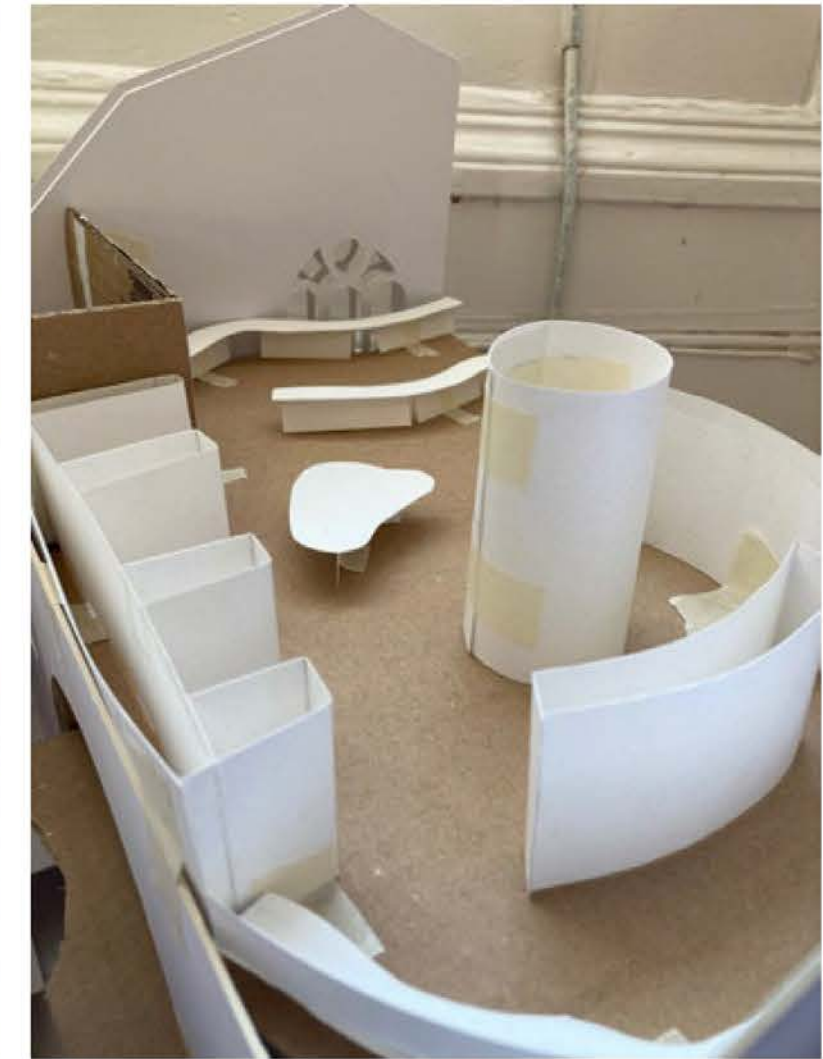
Sketch Model 1:50 Scale



1:50 sectional model looking from front of building towards back



View from second floor of cut in floor plate



View of second floor from south west corner



View of ground floor looking at help desk & communal table



View of first floor looking at ramp



View of second floor from study desks

Final Model

1:50 Scale



View of quiet study desks and stair access



View of meeting room entrance



View of meeting room entrance



View of ground floor looking at help desk & communal table



View of seating 'island' and communal table



View of communal table and stair access

Detail Model / Design Development

Scale 1:20

There were two key developments made to the design of the detail.

The first development was the integration of coloured structural glass in the ceiling around the central core.

This sits on top of the fins which form the central core and ceiling. It also joins into the terrazzo tile floor finish on the first and second floors of the library.

The second development was the decision to make the plywood 'fins' the structural support for the floors above. Instead the ceiling fins simply being suspended from a traditional upper floor/ceiling structure, they acted as the main beams and joists.

This structural decision influenced the material specification for the project.

This detail model was made at 1:20 as the most appropriate scale to demonstrate a clear level of detail.

The fins were made using 3mm plywood, whilst the floor joists have been built using balsa wood. Green acrylic was chosen to represent the structural glass. Lastly, mount board was used to represent the sub-floor, and a sample of terrazzo lino represents the terrazzo tile floor.

Only part of the floor is covered with the terrazzo so that the internal structure can be seen.

