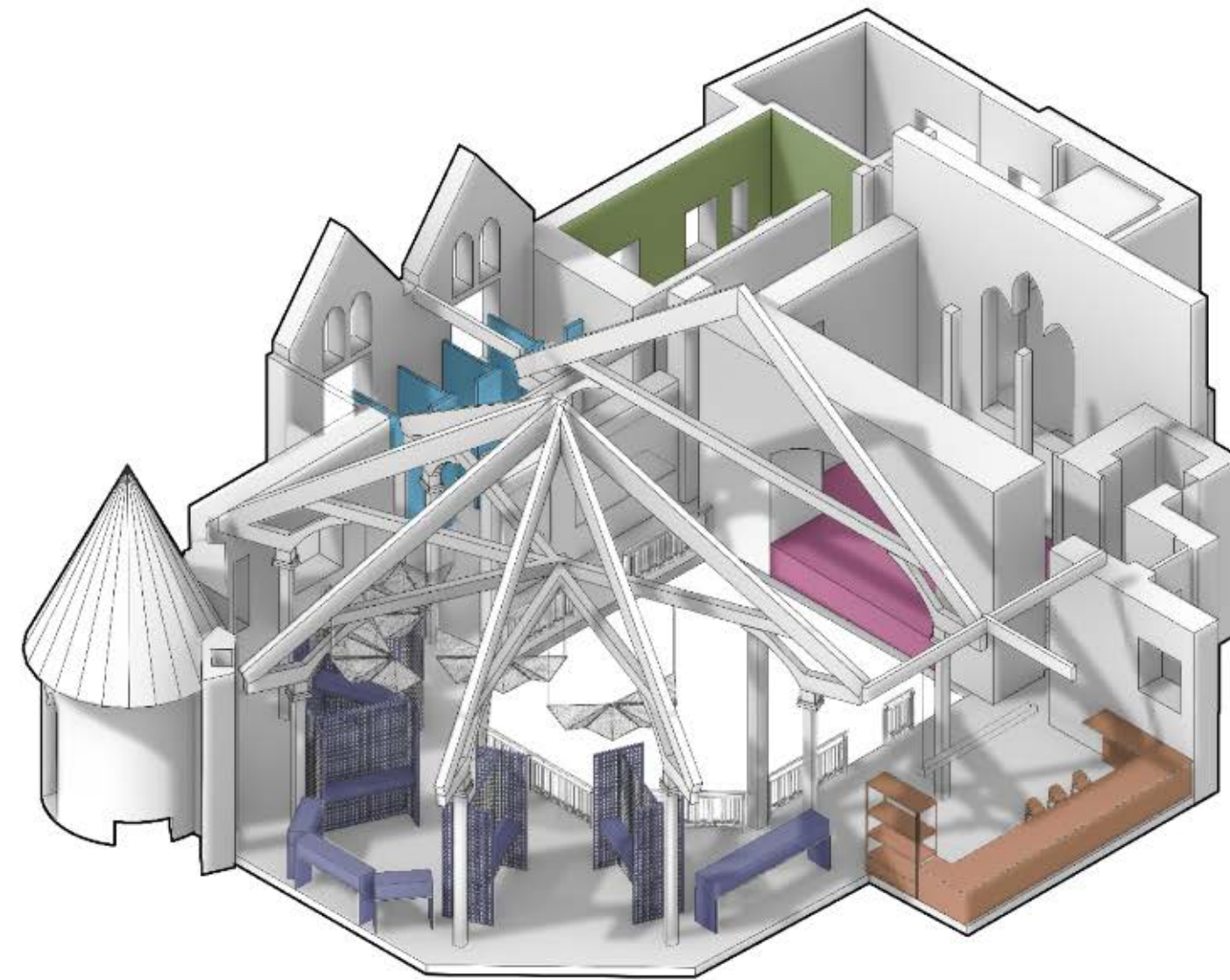


Betty

Tea Zone

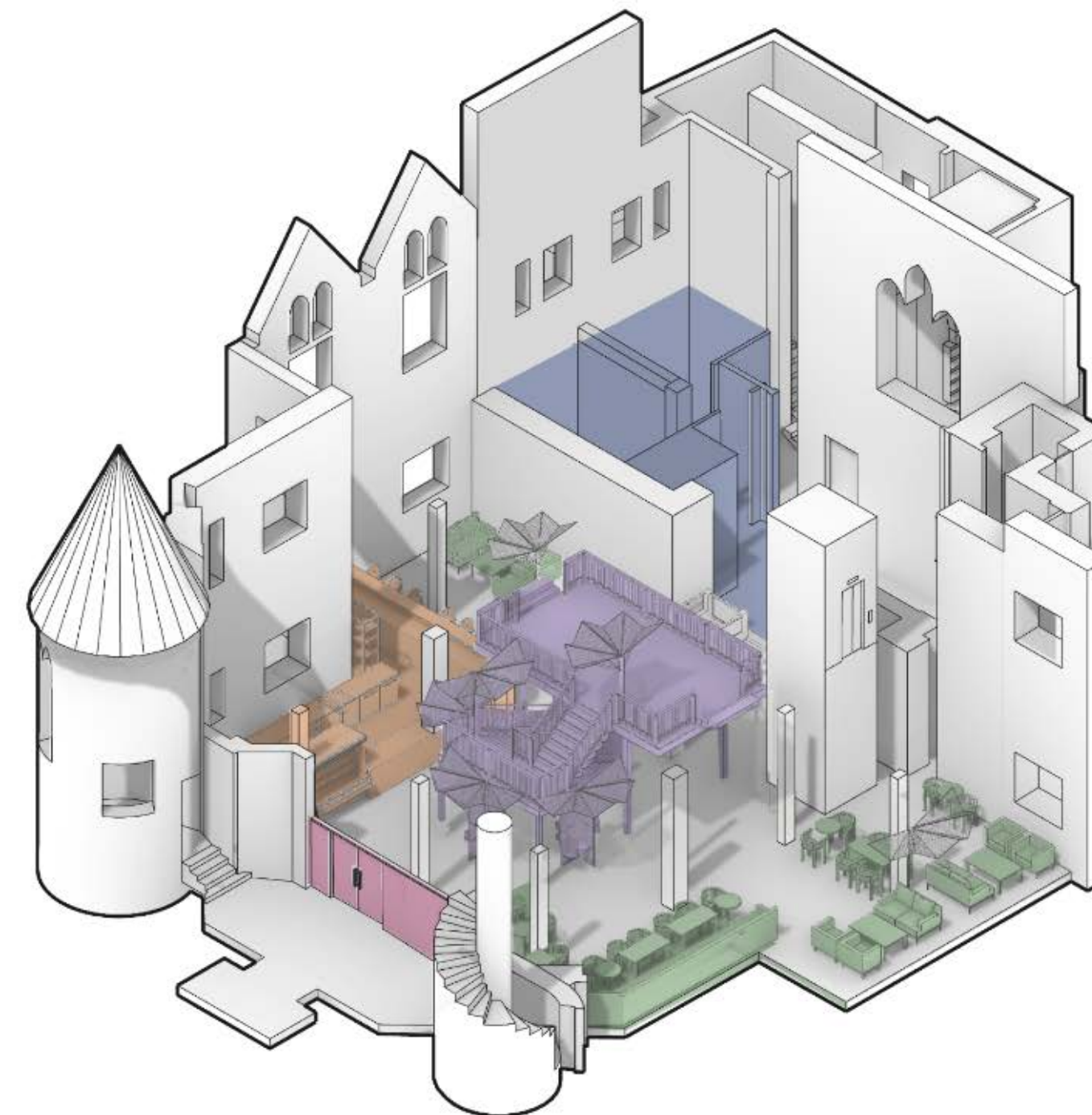
This project offers experimental multicultural spaces for tea drinking and related activities for tourists and local people. The adapted interior of this 18th century church provides a contemporary reuse of a historical building. It aims to create a bridge between tea drinking within different cultures with no limitations of form or rules.

The innovative bamboo structures and playful multi-level spatial arrangements explore the craft and culture of tea making within their design expression. This project seeks to challenge the assumed cultural boundaries of tea drinking whilst paying respect to the ceremonial associations of the past.



First Floor Arrangement

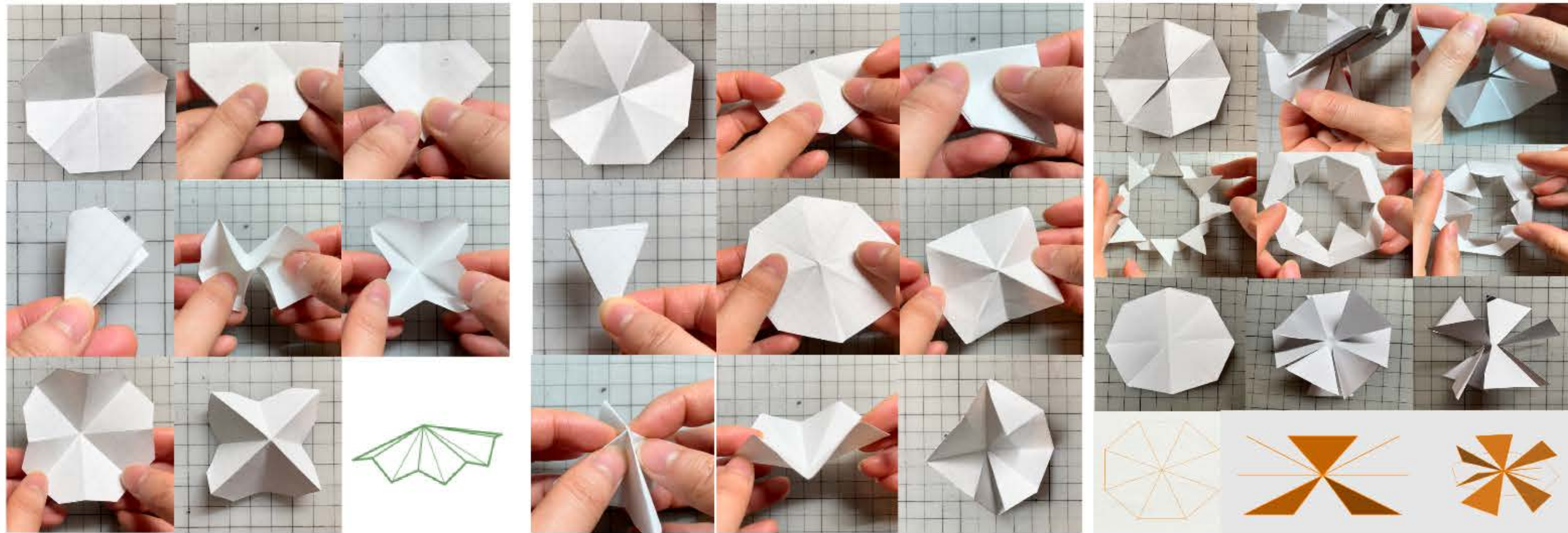
- Office Room
- Exhibition Area
- Workshop
- WC
- Ceremony Stage



Ground Floor Arrangement

- Front Door
- Tea House Seating Area
- Central Staircase & Shop
- Serving Counter/ Cashier
- WC

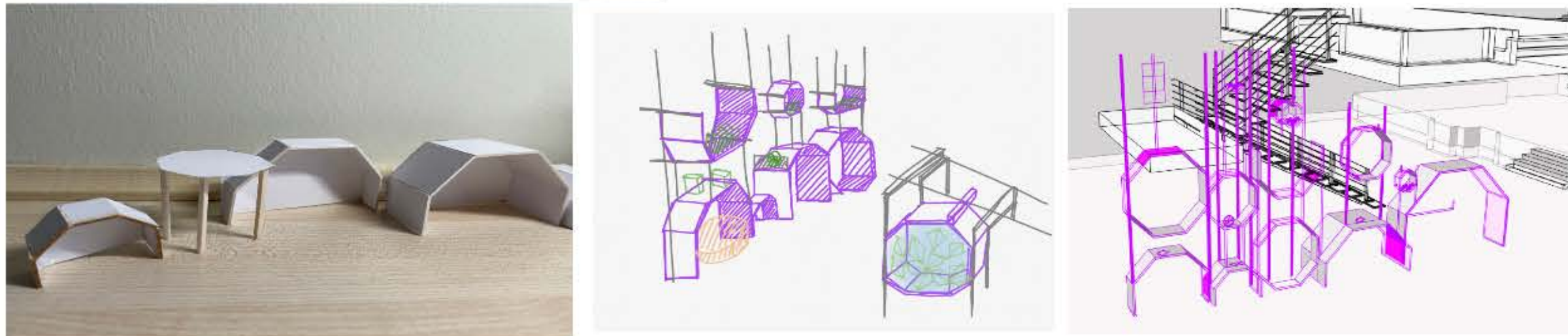
Testing models



I am testing different transformation of octagonal shape through folding and cutting.



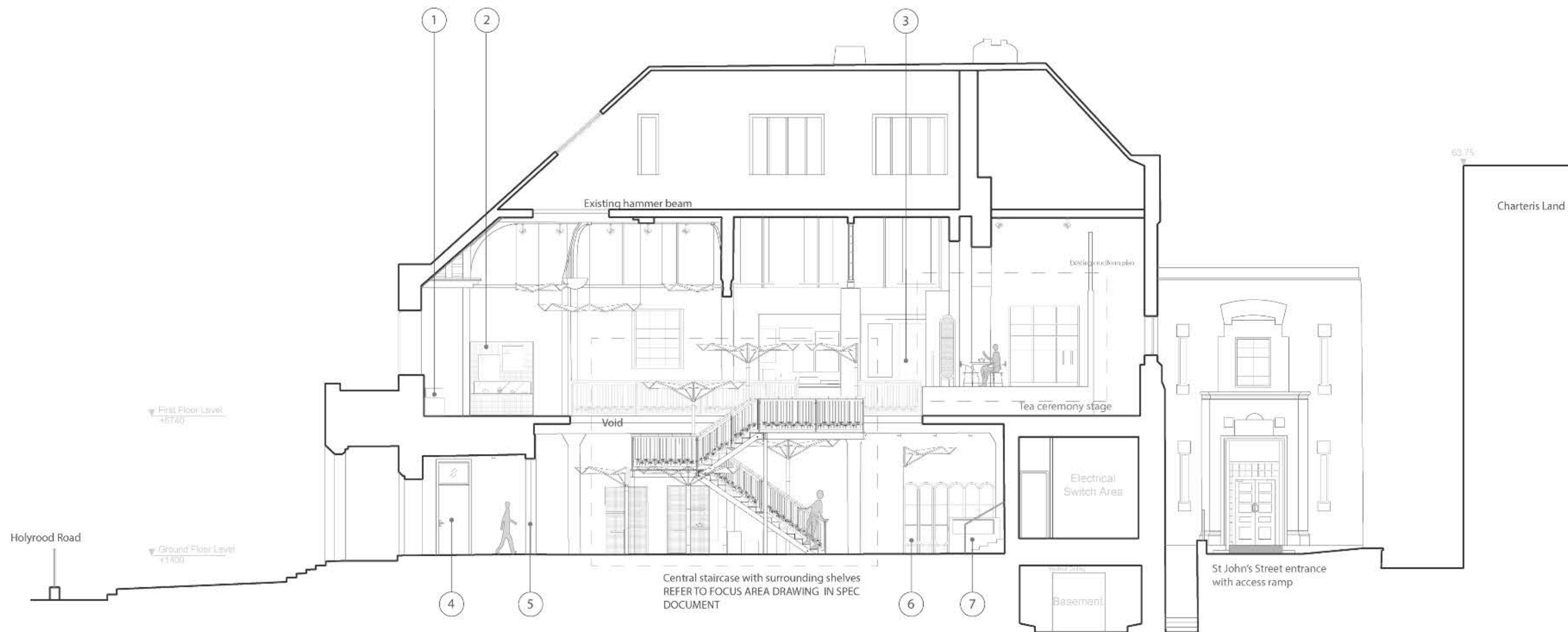
The octagonal shape can be divided in to eight triangles. By changing the levels and positions of these triangles, a 3D structure is formed.



Using different sizes of octagonal frames to create a sequence of blocks. It was a idea of displaying showcase.



The idea of pavilion is inspired by transforming the triangle pieces from the octagonal division. When the light goes through the pavilion, a half octagon is formed on the ground.



- ① Glass display table with bamboo standing H:900, w: 1600, D:600
- ② PVD coloured stainless steel showcase(Rose Gold - Brush) H:2300, W: 1900, D: 480
- ③ Recessed display case with inserted spotlights
- ④ FD 90 ShaftWall and door
- ⑤ FD 90 Glass double Door
- ⑥ Cane screen H: 1800mm
- ⑦ Platform lift (rise:434 mm)

Notes:



Manufacturer:

Display case: Goppion
 Steel Grating Mesh: PalmSHIELD, John Desmond Ltd
 Bamboo products: UK Bamboo Supplies Limited, MOSO Bamboo
 Woven Cane: Cane Store
 Clay Plaster: Clayworks
 Wallpaper: Calico
 Lift: Stannah
 Door: Shadbolt
 Furniture: Industry West

PROJECT TEA ZONE			DESIGNER Betty (Lin Xiaohui)	STUDY NO. S1746483
ADDRESS Old Kirk, 37 Holyrood Road, Edinburgh, EH8 8JR			COURSE General Arrangement- Section B	COURSE Interior Design: Design Studio (2020-2021)[YR]
SCALE 1:100	SHEET A2	DATE 05/2021	DRAWING NO. 001/L(0)009	INSTITUTION University of Edinburgh, College of Art

