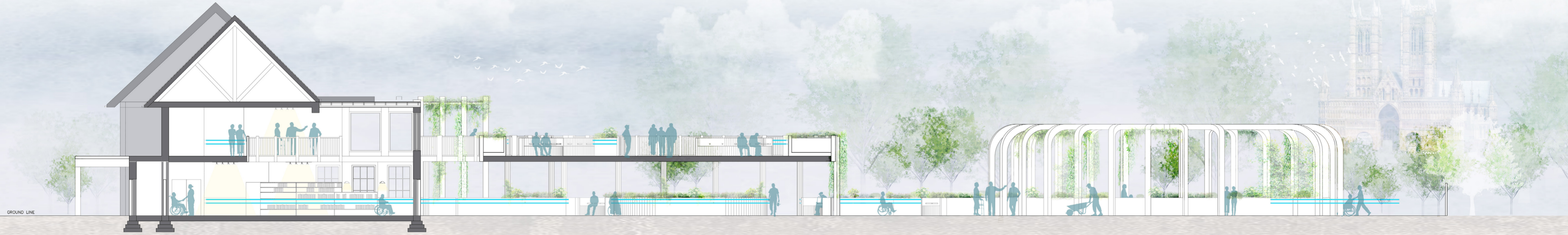


EVERGREEN GROVE

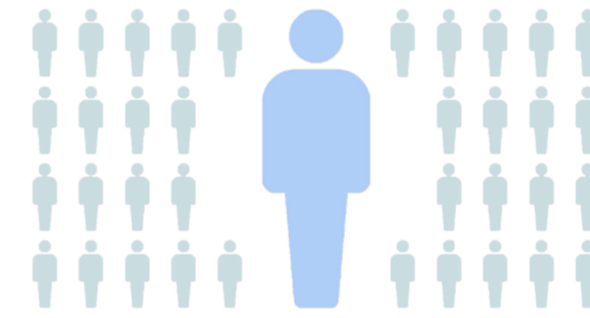
AN ENVIRONMENT DESIGNED TO PRESERVE INDEPENDENCE AND DIGNITY AS PARKINSON'S PROGRESSES.

*A familiar path creates confidence.
Support becomes independence.*



SECTION S01. SCALE 1:150

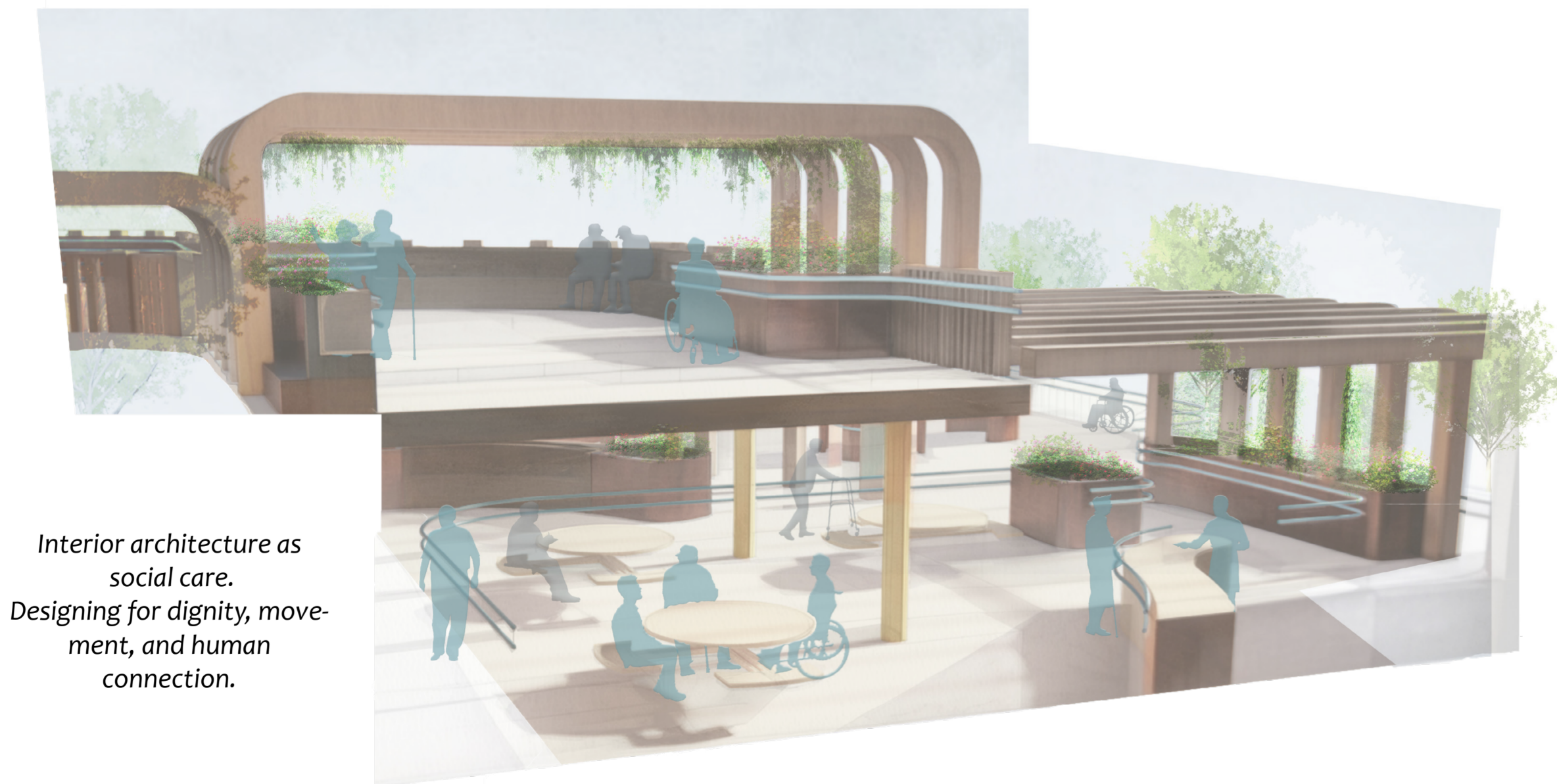
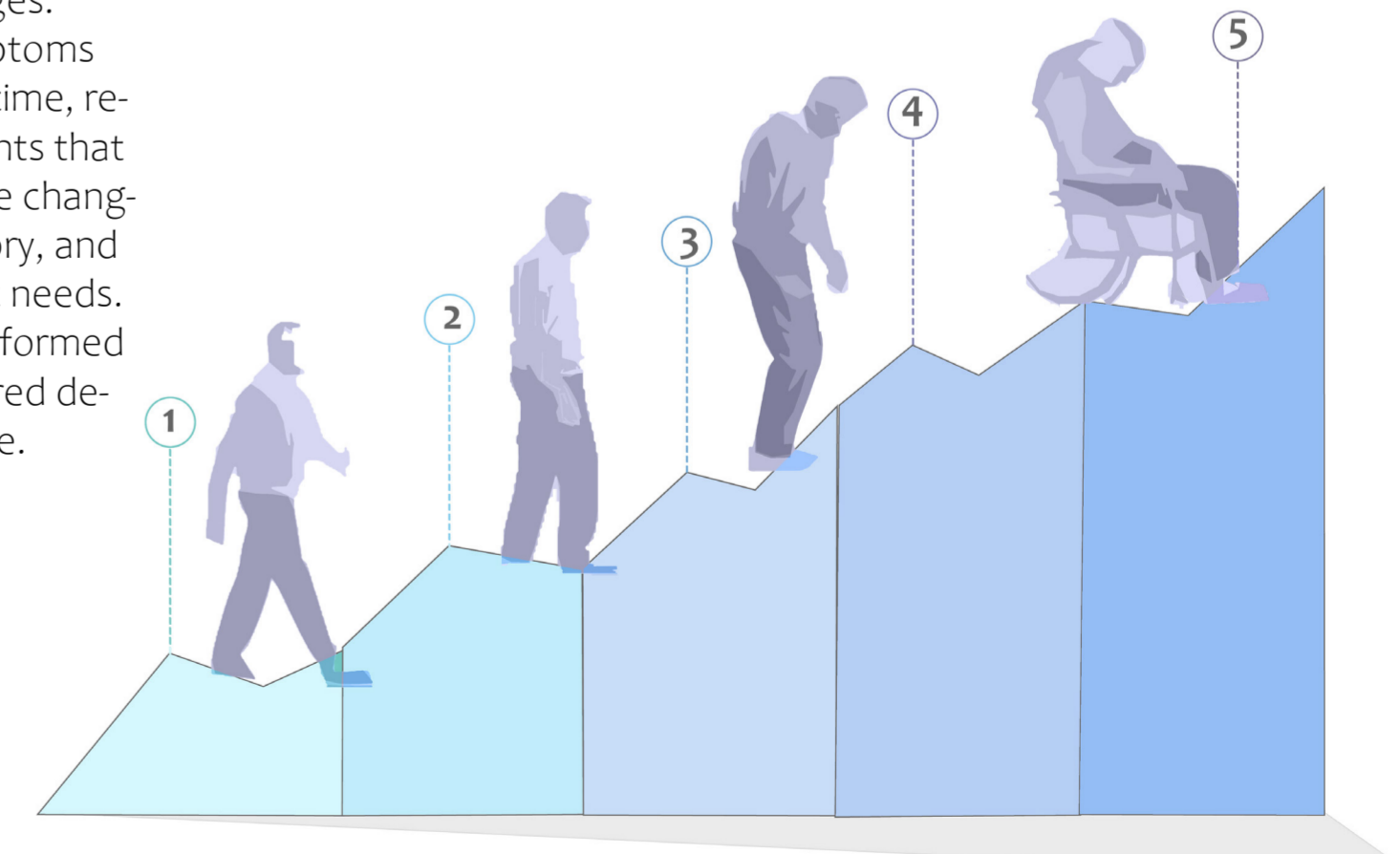
Evergreen Grove is a neuro-inclusive wellness hub designed to support people living with Parkinson's disease. Developed in partnership with Parkinson's UK and Lincoln NHS, the project responds to the lived realities of a progressive neurological condition that affects movement, cognition, sensory perception, and independence. Inspired by the enduring symbolism of the yew tree, the design promotes connection between people, nature, and care through accessible circulation, therapeutic gardening, and intuitive wayfinding. By prioritising dignity, inclusion, and long-term well-being, Evergreen Grove demonstrates how interior architecture can act as a form of social care, creating meaningful and empowering experiences for diverse users.



Project Clients

Developed in response to Parkinson's UK and Lincoln NHS, the project brief was shaped around appropriate levels of care, therapeutic support, accessibility, and long-term user well-being, addressing the needs of the 1 in 37 people who will be diagnosed with Parkinson's disease during their lifetime.

Parkinson Stages:
Parkinson's symptoms often evolve over time, requiring environments that can adapt alongside changing physical, sensory, and emotional support needs. This progression informed the project's layered design response.

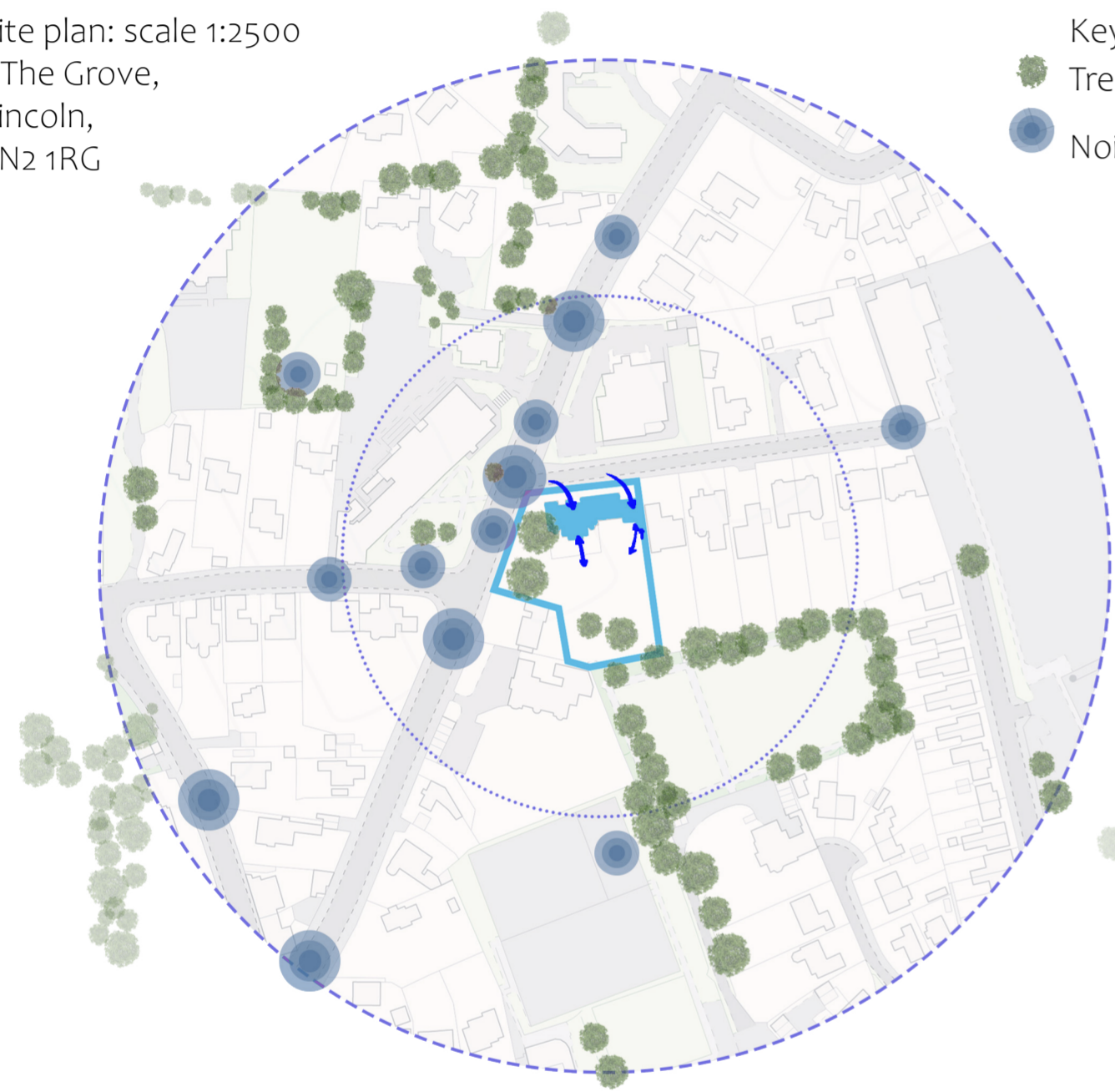


*Interior architecture as social care.
Designing for dignity, movement, and human connection.*

SITE OVERVIEW

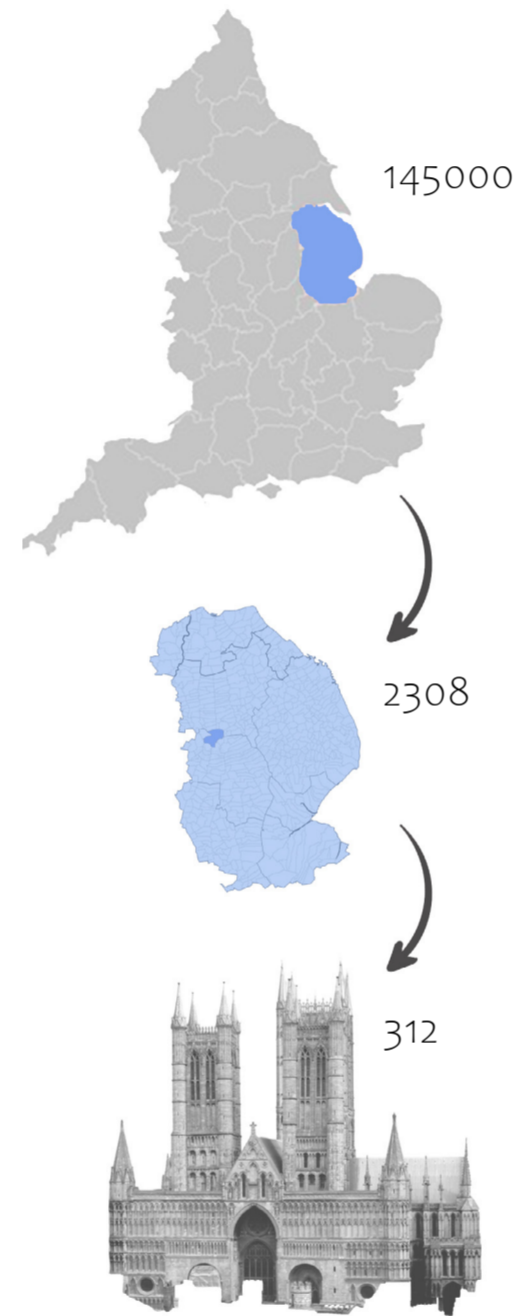
As life expectancy increases, the need for environments that support long-term neurological health becomes increasingly urgent. Parkinson's is progressive, unpredictable, and deeply individual, often affecting mobility, confidence, sensory processing, and independence.

Site plan: scale 1:2500
1 The Grove,
Lincoln,
LN2 1RG



Key:
● Trees
● Noise

Demographics of Parkinson's across the UK, Lincolnshire and Lincoln.



Responding to Local Need

Lincolnshire has an ageing population and increasing demand for neurological support services. Evergreen Grove proposes a community-focused model of care that enables people to remain active, connected and supported within their local area.



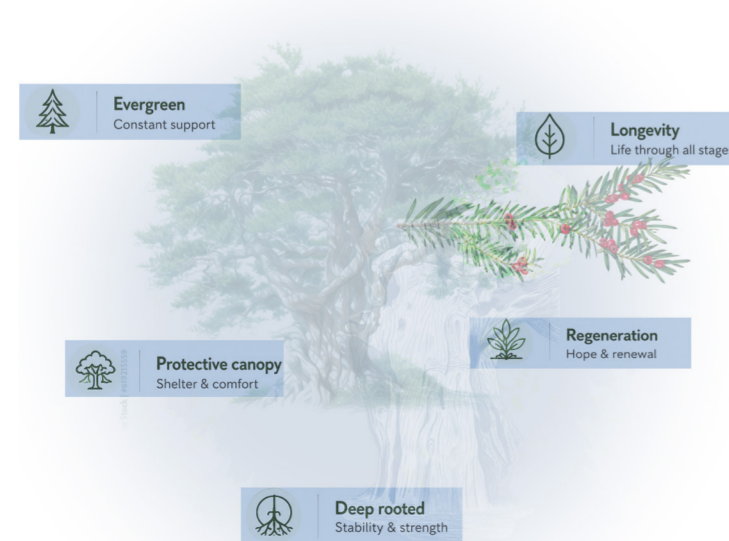
DESIGN RESPONSE

	Loss of balance	→		Continuous handrail support Consistent handrails throughout for safety and independence.
	Cognitive decline	→		Simple, clear circulation Easy-to-navigate layouts that promote orientation and flow.
	Reduced senses	→		Sensory rich environment Naturally lit, calming spaces that support well-being.
	Isolation	→		Social & shared spaces Comfortable areas that encourage connection and community.
	Loss of independence	→		Empowering & engaging activities Meaningful programs that inspire purpose and participation.

As internal connections weaken, the environment provides external connection and support.

Why Here?

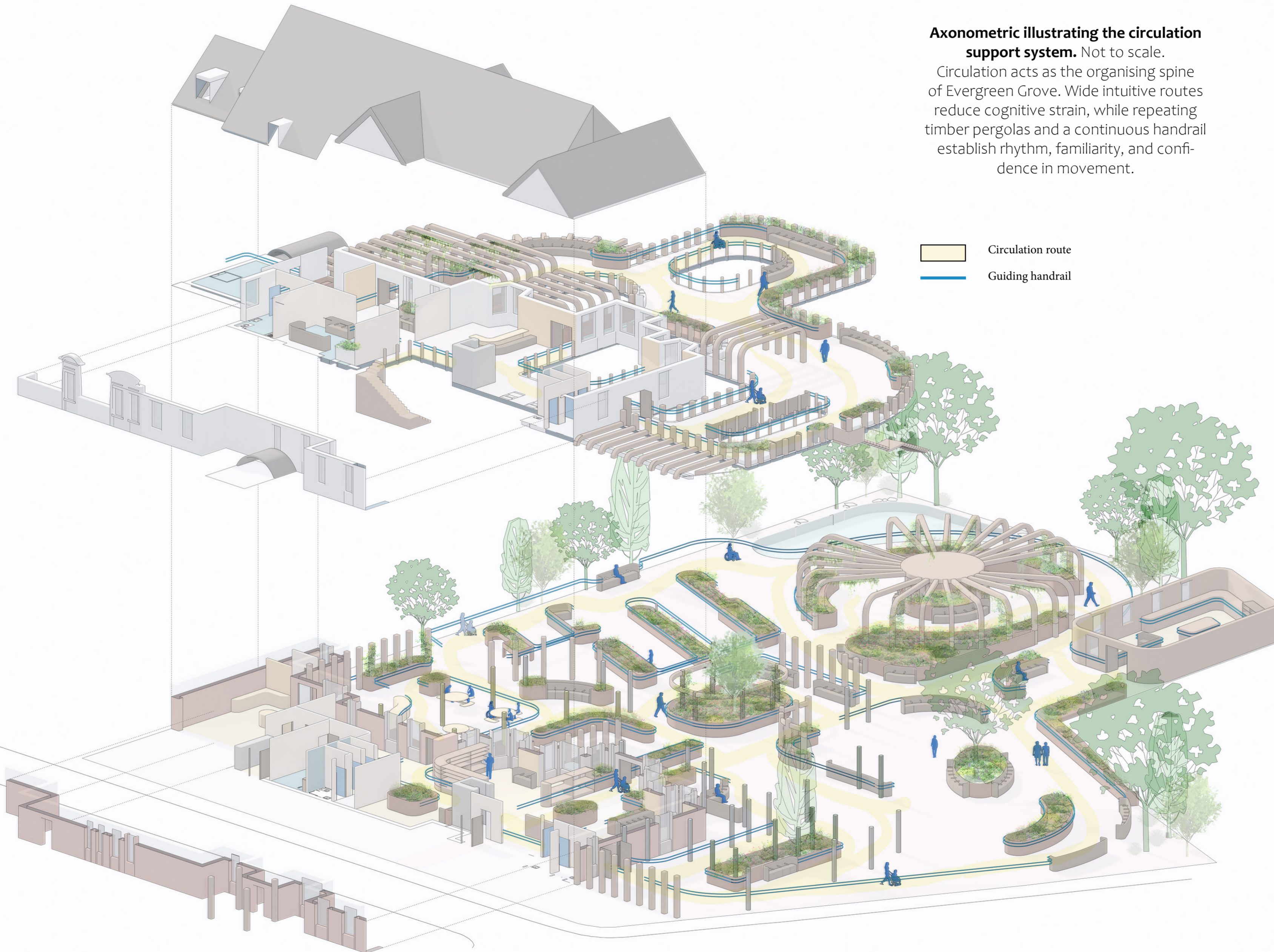
Located within an existing healthcare setting, Evergreen Grove offers a realistic model for long-term support. The site combines access to healthcare services with opportunities for social connection, outdoor therapy and community engagement, helping bridge the gap between clinical care and everyday life.



Learning from Nature

The enduring symbolism of the yew tree became a conceptual framework for the project. Its associations with longevity, protection and resilience informed a design language that provides reassurance while encouraging independence. Repeated timber structures throughout the building echo the sheltering qualities of the tree canopy.

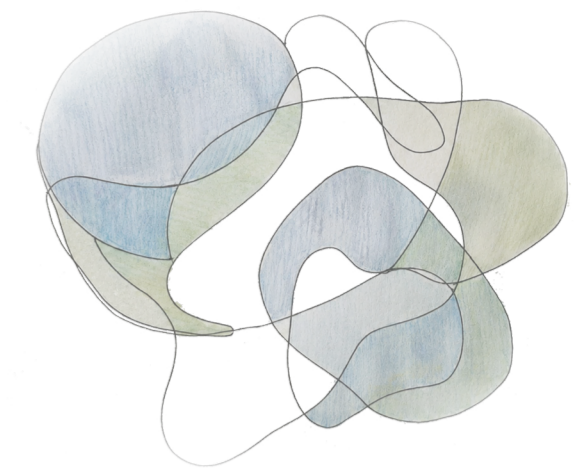
DESIGN RESPONSE



Axonometric illustrating the circulation support system. Not to scale.

Circulation acts as the organising spine of Evergreen Grove. Wide intuitive routes reduce cognitive strain, while repeating timber pergolas and a continuous handrail establish rhythm, familiarity, and confidence in movement.

- Circulation route
- Guiding handrail



A single line becomes support.

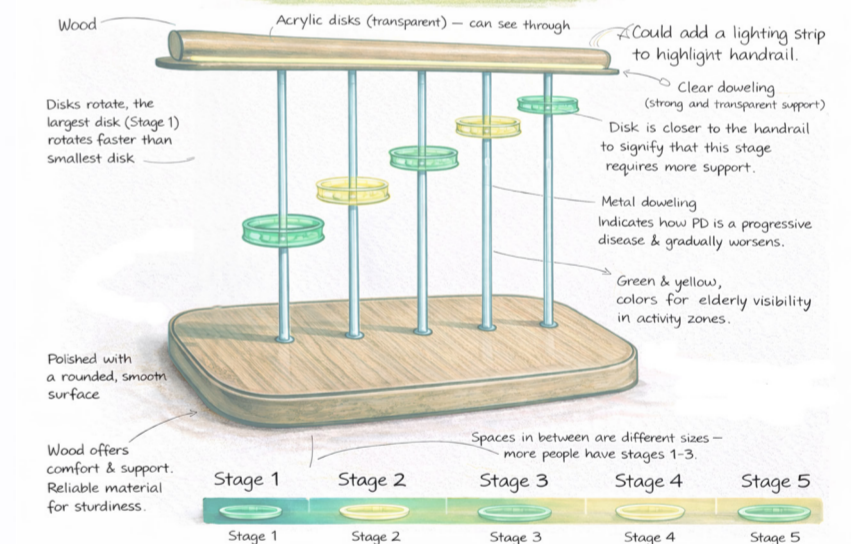


The continuous handrail acts as the project's guiding thread, providing physical reassurance, intuitive way-finding, and tactile familiarity throughout the scheme.

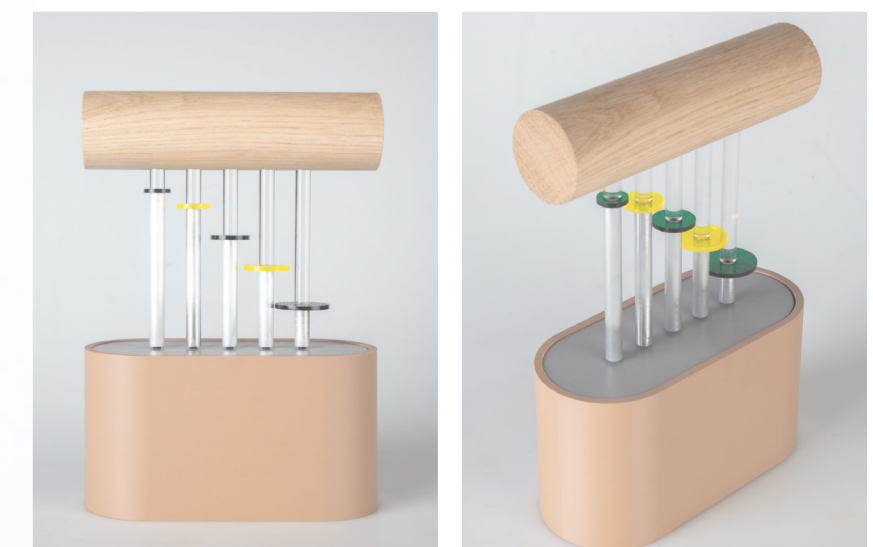


Concept Model

CONNECTION



This concept model explores how support needs increase over time. Each rotating element reflects the unpredictability of Parkinson's progression, while the gradual movement toward the handrail symbolises increasing reliance on physical reassurance and accessibility.



SPATIAL EXPERIENCE

Experiencing Evergreen Grove

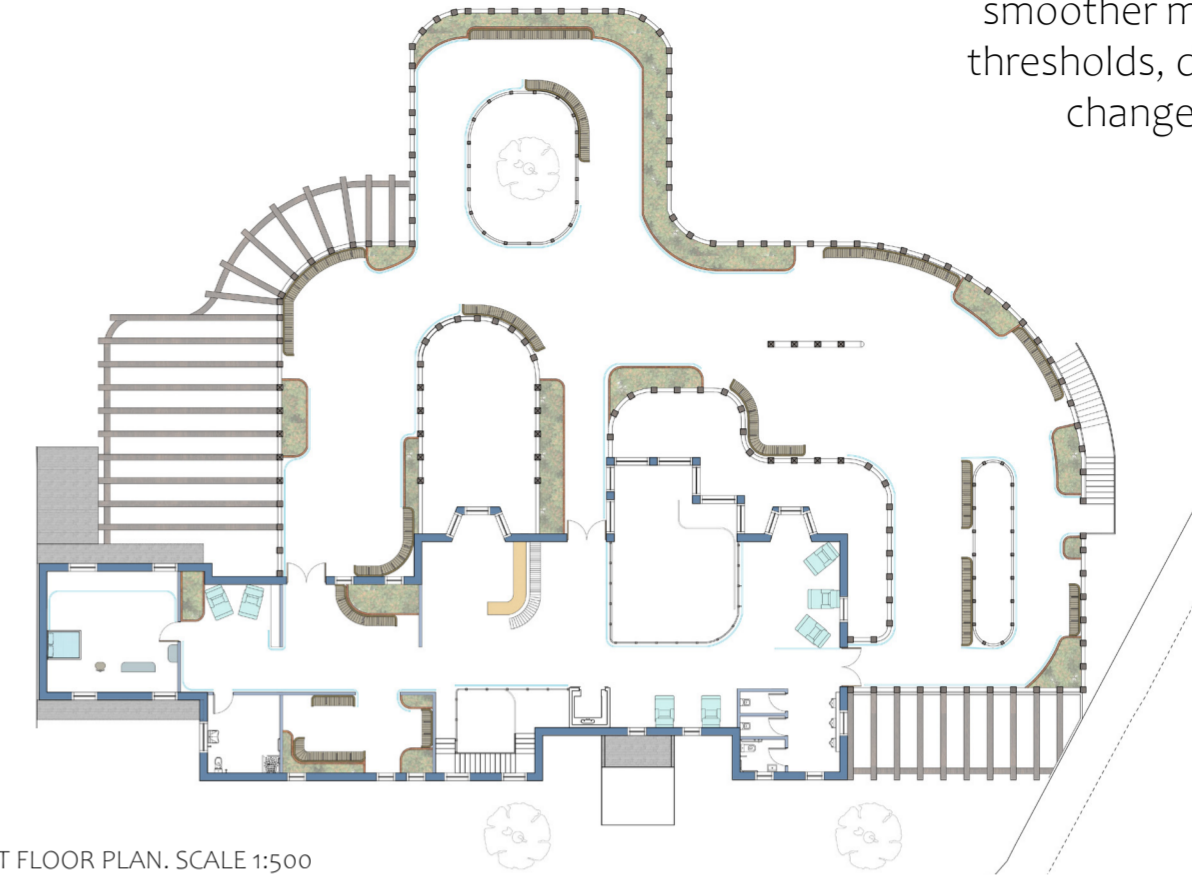
Upon arrival, users are met with framed views towards the garden and continuous hand-rail support from the first moment of entry. These visual connections create confidence in movement while reducing uncertainty and encouraging exploration.



A Therapeutic Threshold

The large balcony creates a gradual transition between interior and exterior environments. Rather than creating a clear boundary, it encourages users to remain visually and physically connected to nature while benefiting from shelter, support and social interaction.

Soft curved pathways reduce abrupt transitions that may trigger freezing of gait, supporting smoother movement through thresholds, decision points, and changes in direction.



FIRST FLOOR PLAN. SCALE 1:500



GROUND FLOOR PLAN. SCALE 1:500

Familiarity Through Repetition

The mirrored first-floor layout and repeated pergola structures create predictable spatial cues. Familiar environments can reduce cognitive effort and support independent navigation, particularly for users experiencing sensory or cognitive changes.

Gardening became a fundamental part of Evergreen Grove due to its therapeutic benefits for people living with Parkinson's. Accessible raised planters, sensory planting, and therapeutic walking routes encourage mobility, dexterity, routine, social interaction, and emotional well-being.

DESIGN DETAIL

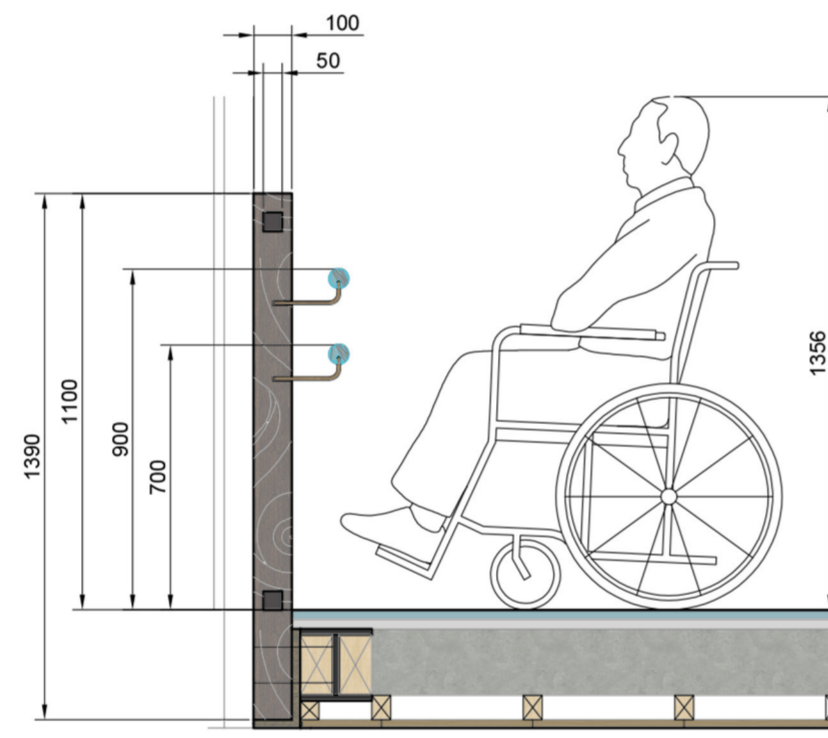


SECTION S02. SCALE 1:150

Continuous Support

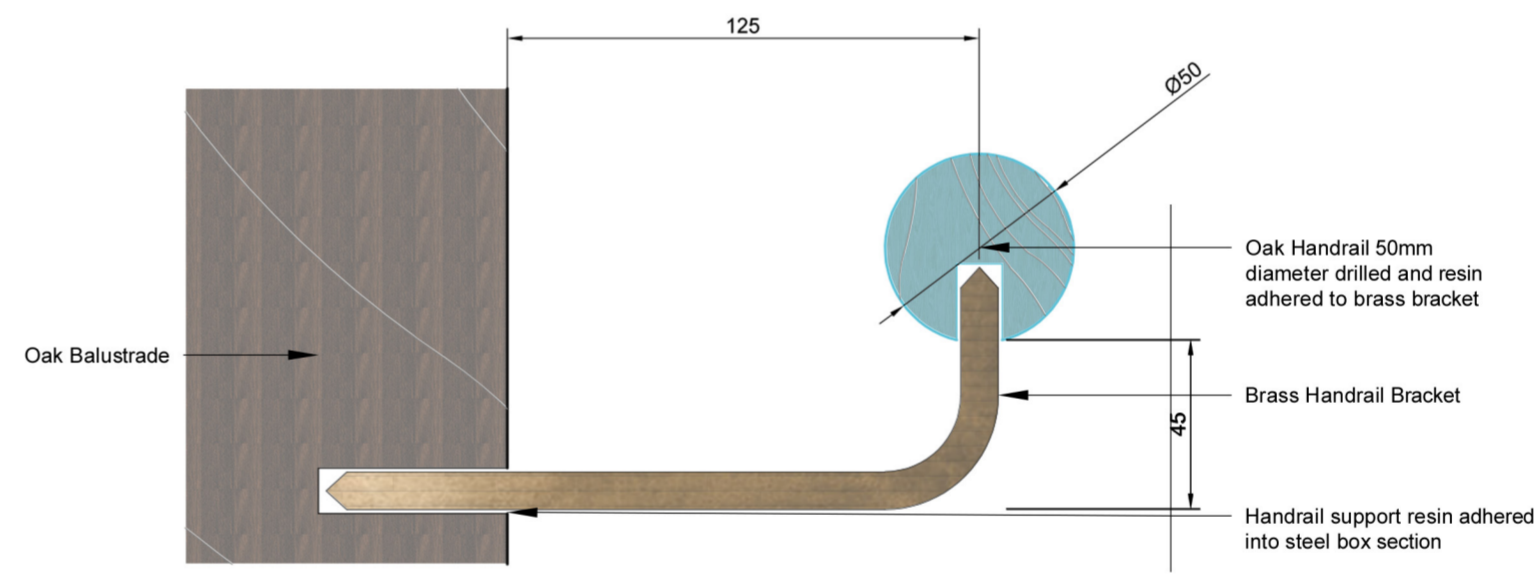
Beginning at the entrance and extending throughout the building and landscape, the continuous dual-height handrail acts as a constant point of reassurance. Designed to support users with varying mobility needs and at different stages of Parkinson's progression, it provides accessible physical assistance while creating a recognisable route through the building. Beyond supporting movement, it strengthens orientation, confidence, and independence, allowing users to navigate the environment with greater ease.

Details. Scale as shown.



HANDRAIL AND BALUSTRADE SECTION. SCALE 1:20.

By combining inclusive design, therapeutic landscapes, and intuitive support systems, Evergreen Grove creates a welcoming environment that promotes dignity, wellbeing, and independence as needs evolve over time.



HANDRAIL CONNECTION DETAIL. SCALE 1:2.



HANDRAIL AND BALUSTRADE VISUAL. Not to scale.



Support extends vertically through the scheme, connecting internal therapeutic spaces, social environments, and accessible outdoor experiences.

RESEARCH INFORMING DESIGN

Evergreen Grove demonstrates how evidence-based design can be translated into meaningful spatial experiences, empowering people with Parkinson's to maintain confidence, autonomy, and connection throughout their journey.

Material Board



Materials Supporting Well-being

The material palette was developed to support both physical and emotional comfort. Warm timber surfaces create familiarity and reduce the institutional feel often associated with healthcare settings, while low-glare finishes improve visual clarity for users experiencing sensory changes. Consistent materials throughout the building strengthen wayfinding and contribute to a calm, reassuring environment.

Support should be present, but never restrictive.