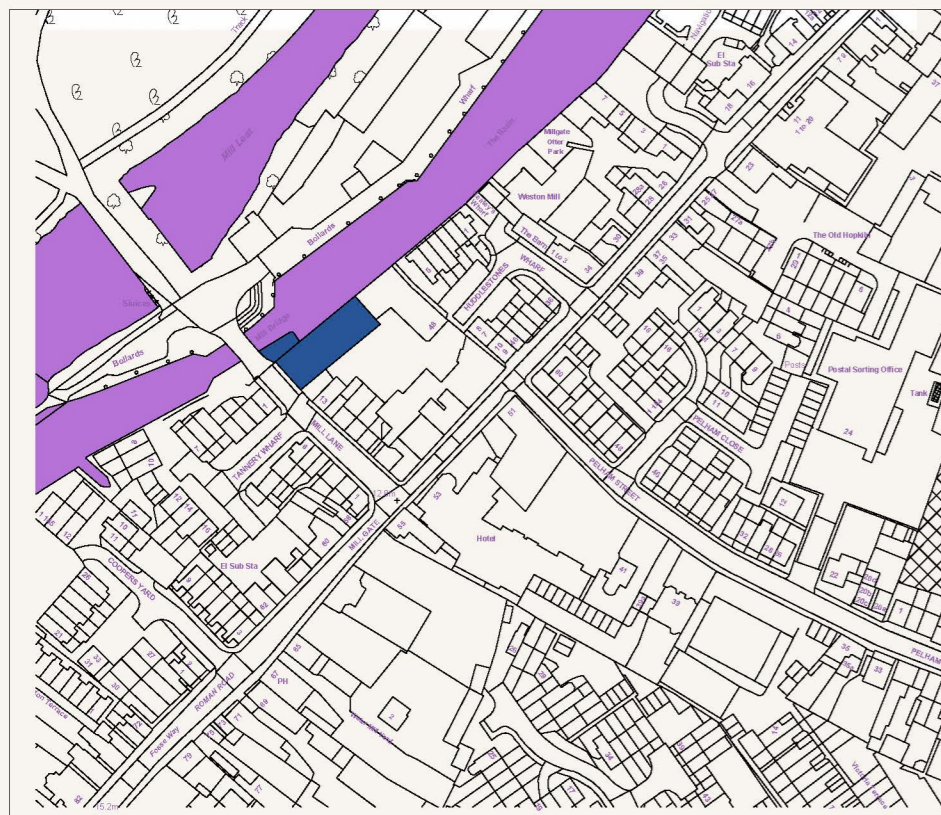




GROWING  
— together —  
COMMUNITY GARDEN  
& TEACHING KITCHEN  
NEWARK • ENGLAND

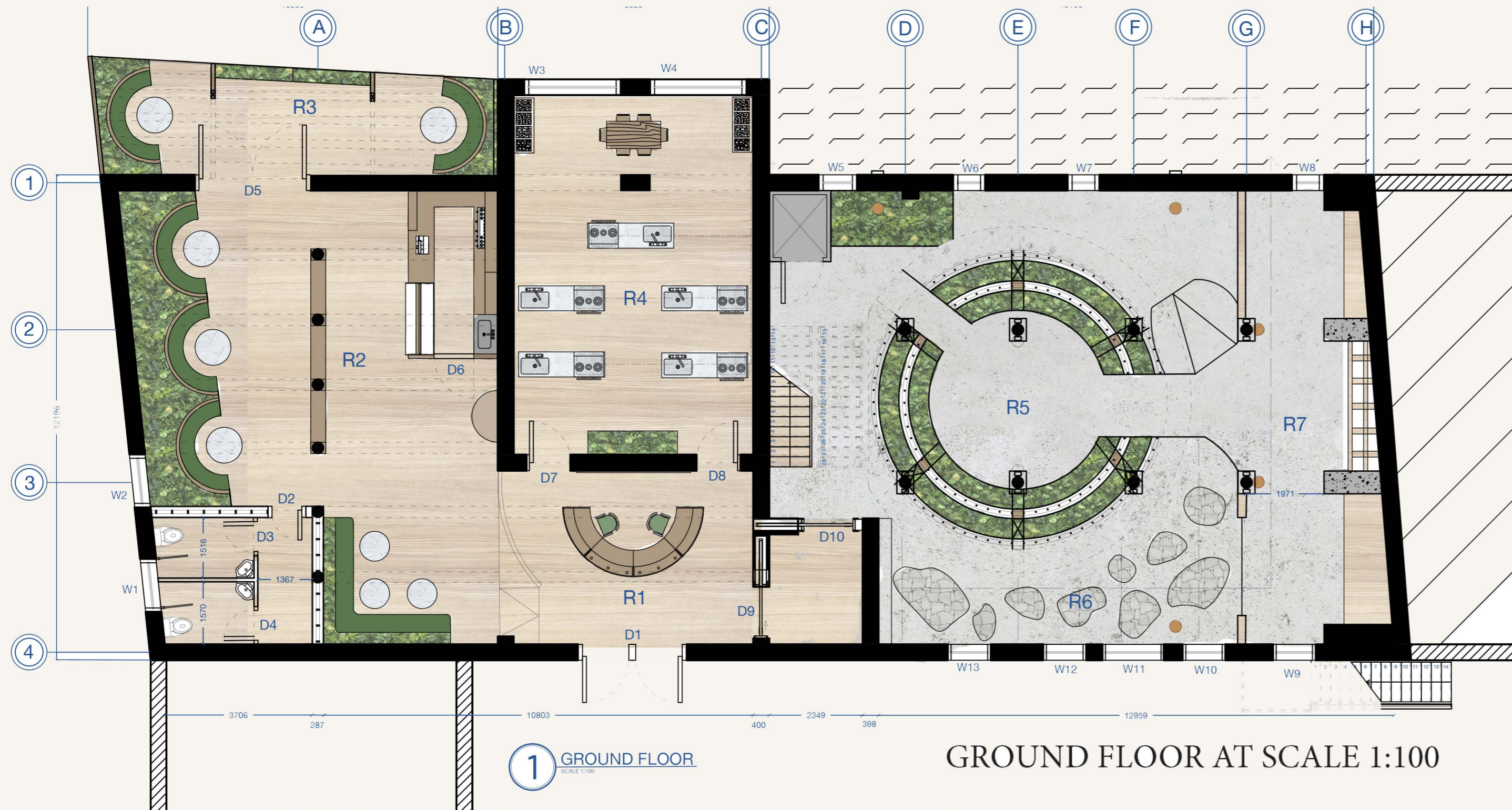


LOCATION - 48 MILL GATE, NG24 4TS



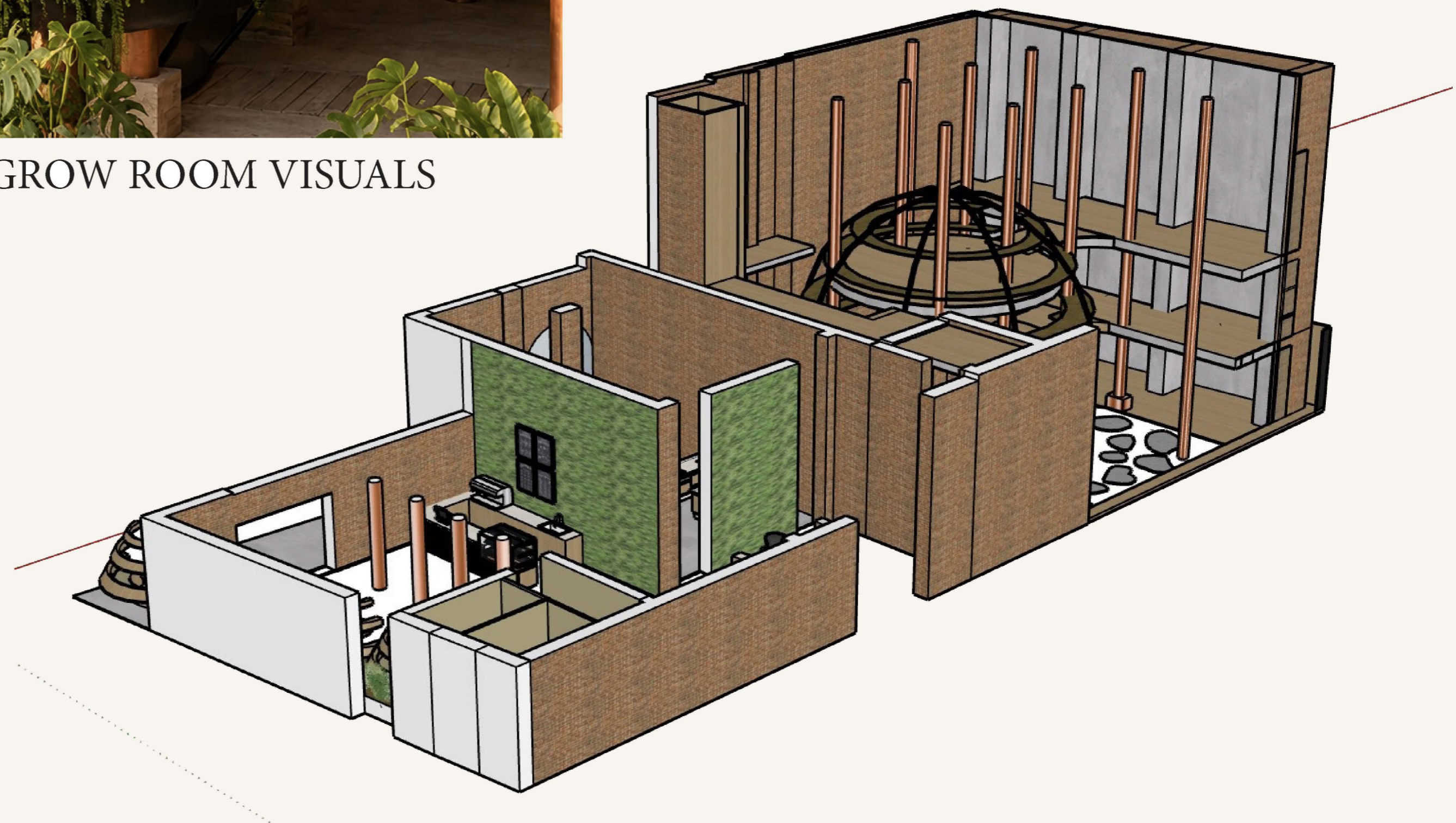
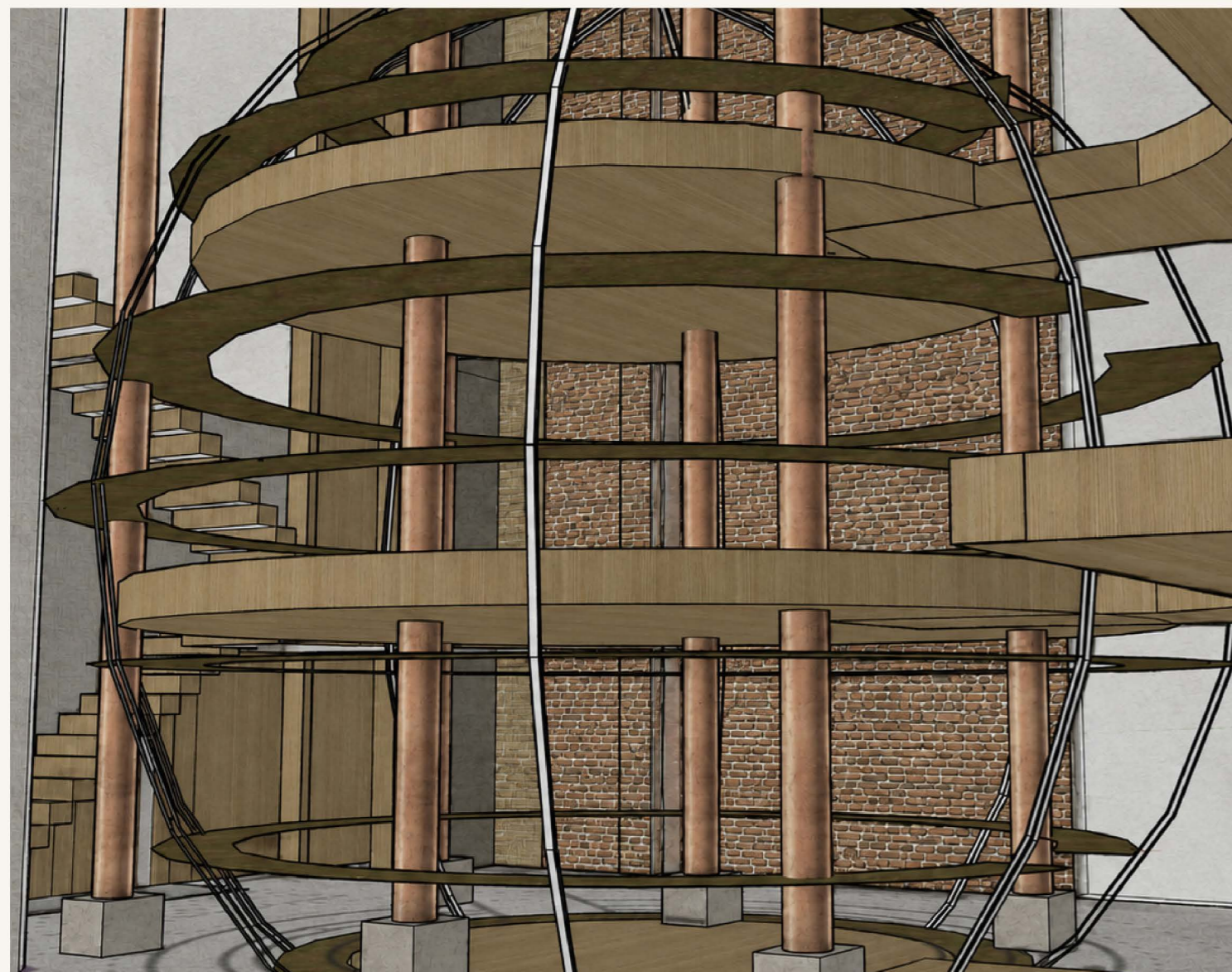
Growing together explores the idea that interiors can be catalysts for social change, transformation of communities, growing and connection. This space is located in Newark-on-Trent and combines indoor food cultivation, cooking education and community space in order to tackle three main issues: youth disengagement, anti-social behaviour and unhealthy eating habits, all of which Newark struggles with. Natural materials, including timber, exposed brick, and planting systems, create a warm and accessible atmosphere while reinforcing connections to food production and nature. Environmental strategies such as year-round indoor growing, daylight optimisation, rainwater harvesting, and integrated planting encourage healthier lifestyles and sustainable practices. Responding to the theme of Imagining Interiors, the project reimagines interior space as an active, regenerative environment that nurtures both people and place.

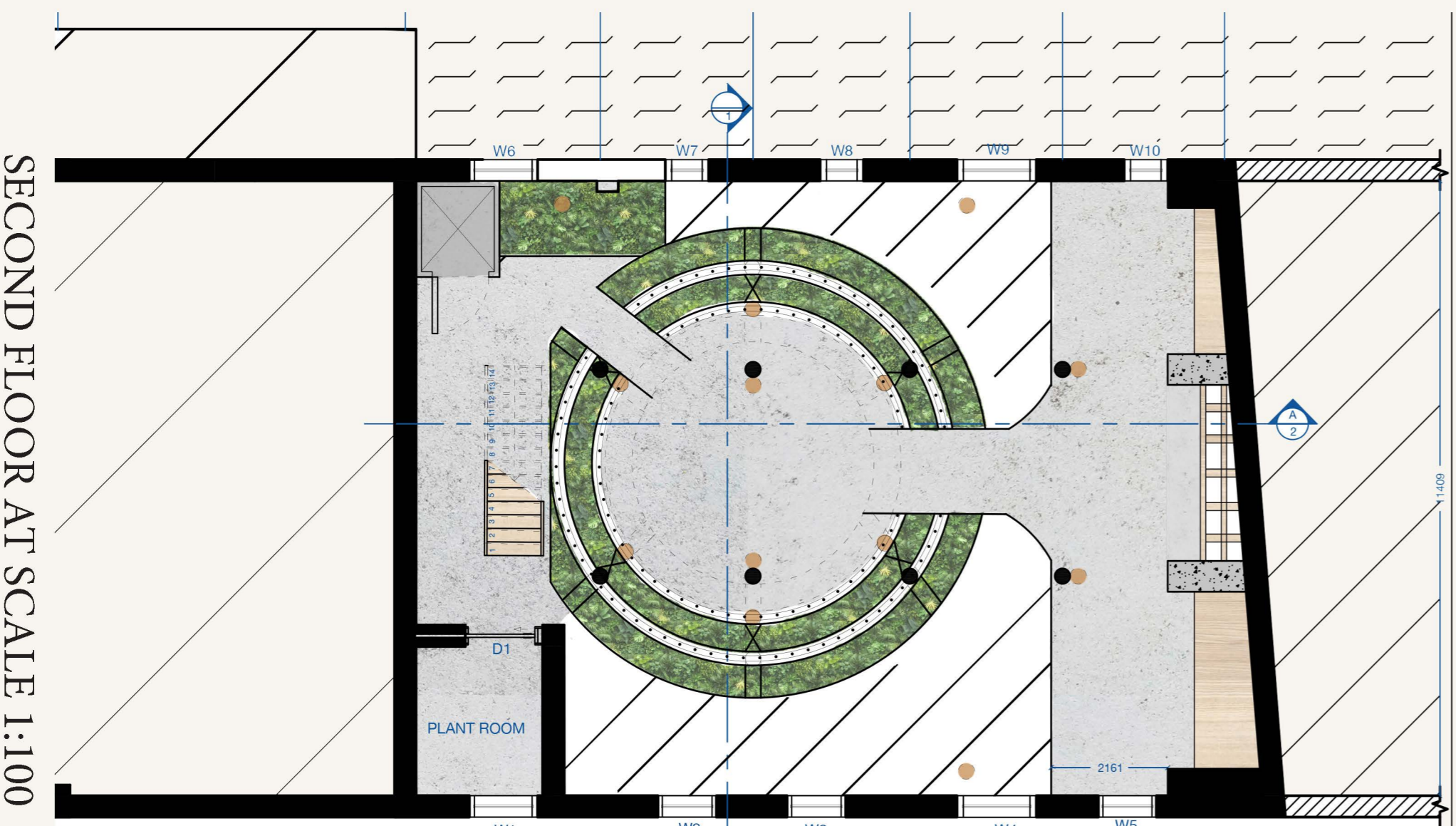
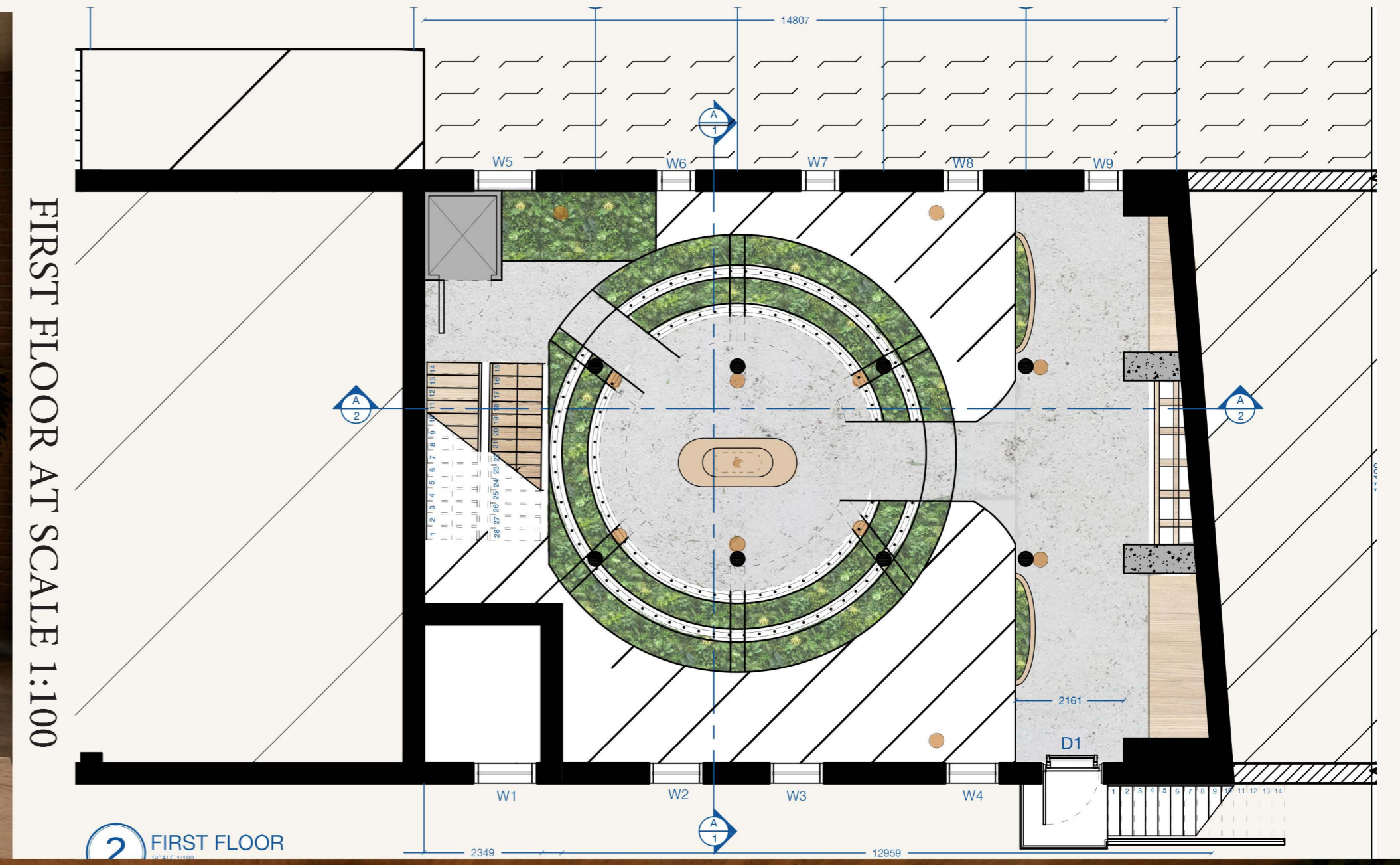


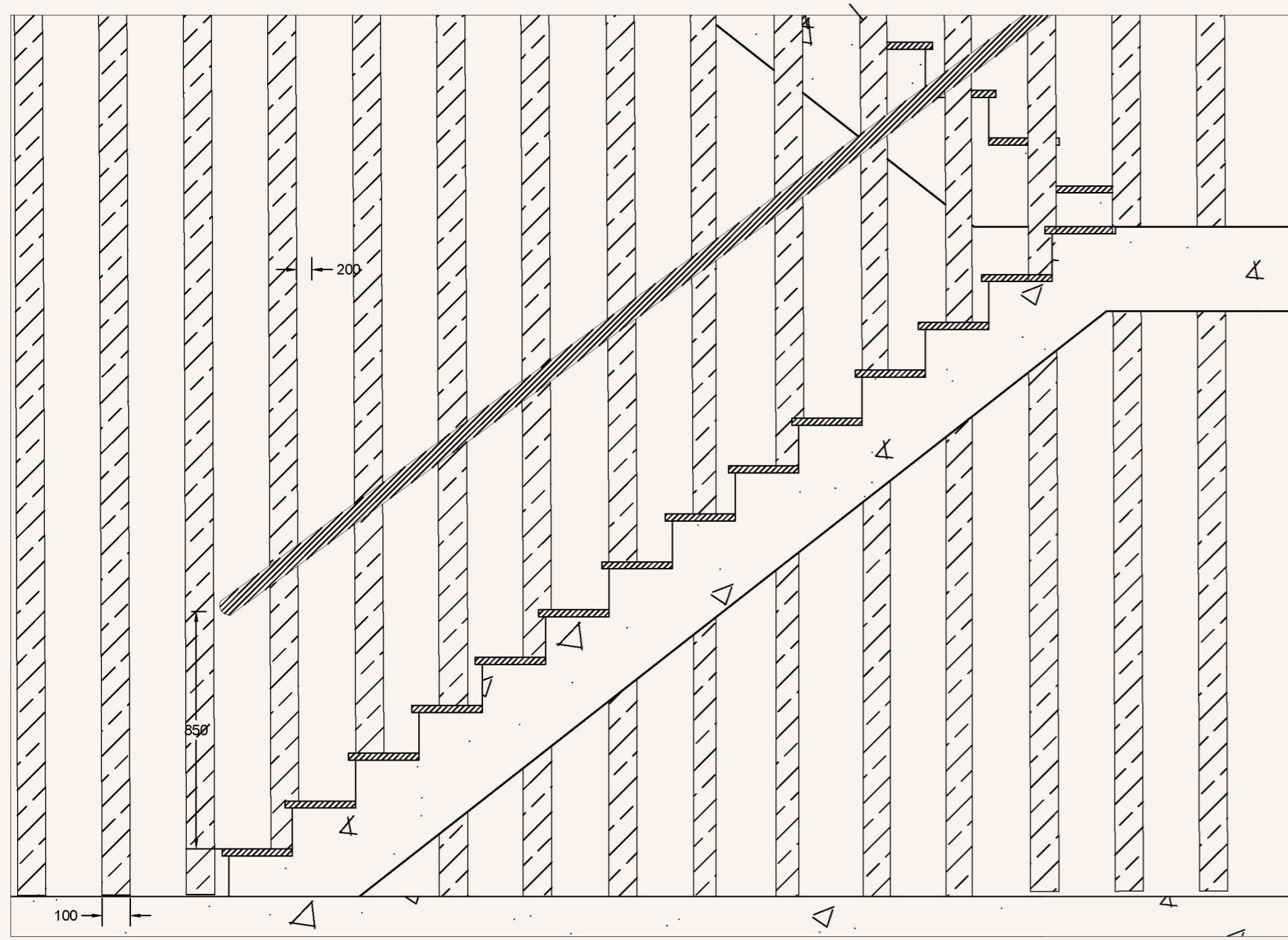




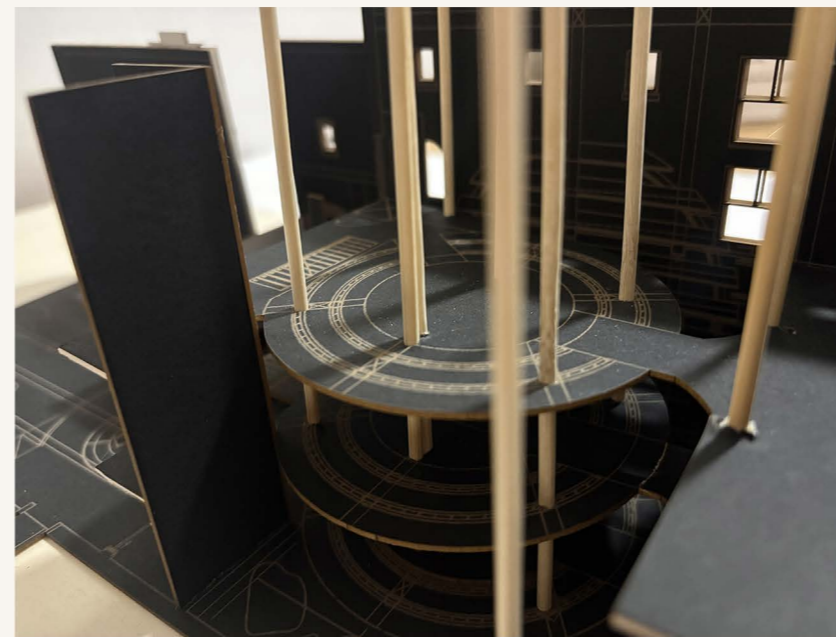
GROW ROOM VISUALS







STAIR DETAIL AT 1:20



For my material I have chosen a lot of natural colours and textures in order to incorporate the main focus of the space which is biophilic design.

