



Design Intent:

Elythm' is a multi-use performance hub for grassroots project. With intention to expose the performing arts, specifically Dance, to a younger audience. The space is designed to foster and develop the skills required for a career pathway into the creative industries.

The government's definition of the creative industries is "those industries which have their origin in individual creativity, skill and talent and which have a potential for wealth and job creation through the generation and exploitation of intellectual property." The Creative Industries have been addressed as one of the eight growth driving sectors that will receive targeted support from the governments upcoming industrial strategy.

Site:



Existing Site Collage

30 West Parade, previously used as Lincoln's police station, is in the historic area of Central-Lincoln and has views of the Castle and Cathedral to the rear of the building. For aspiring performers and creatives, having access to a venue which caters for both rehearsals and performance local to them is important as it lessens barriers such as cost and travel.



Historical Timeline of Site

Existing Fabrication:

With Brutalist architecture known for its bold and geometric appearance, I think this would be a suitable host building for the project as it stands out from its surrounding buildings. The raw aesthetic mirrors theatrical intensity and emotion. The focus on functionality and rejection of ornamentation allows for a stark contrast to the performance which creates drama. With brutalist buildings, including 30 W Parade, they prioritise large open volumes. This would be suitable for a theatre space due to the need for high ceilings for auditorium/ performance spaces. When considering Adaptive Reuse and sustainable design, the exterior shell of concrete allows for both sound insulation and light control (creating a dark/ focused performance environment). This would allow for materials to be reused and repurposed. I would like my project to cater for young people who wouldn't normally have access to the theatre due to finances or location. Theatre has often been noted as exclusive to the upper classes due to high prices, this reflects Brutalist ideas of 'Anti-Elitist' architecture. The Brutalist movement was centred on function over decoration and consider social use and accessibility, (wider than just disabled access)

Site Location in comparison to Creative Hotspots

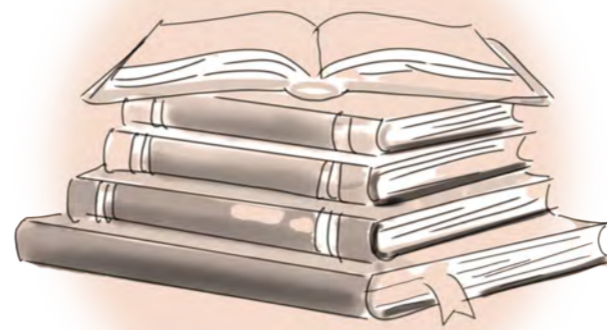


User Profiles:



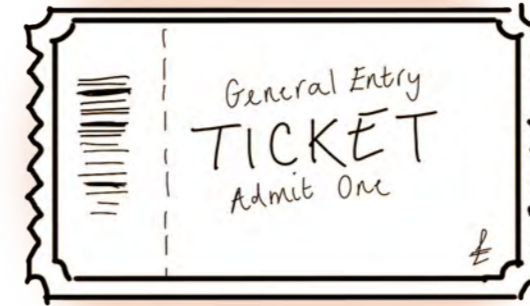
Aspiring Performers (18-25)
Primary User

The primary user of this design proposal is young adults (18-25) who have an interest within the creative sector. With a focus on the performing arts industry specifically dance. Whether that be individuals in current training or individuals with little experience. The scheme will provide multiple stage and studio environment to give the users an insight into a professional setting. Aspiring performers will have the opportunity to gain experience in a professional stage setting and rehearsal studios. It provides spaces for group rehearsals. An important factor to consider will be their next steps. Users will have access to career advisors focused on the creative industry. To provide experience with teaching and leadership, volunteer roles to host workshops and dance classes will be available.



Secondary School Students (11-17)
Secondary User

The second target user for the space will be secondary school students. My design proposal aims to increase exposure of the creative industry to students. From research, much of the creative industry is centred in major cities, mainly London and Manchester. With 52% of creative output coming from London. Due to the change in education curriculum and the introduction of the EBACC, students outside major cities and wealthy areas lack exposure to the performing arts. Whilst the aim, is to promote careers within the creative industry, such sectors are proven to develop transferable life skills. Dance strengthens a wide ride of transferrable skills including teamwork, creativity, stamina, strength, confidence and leadership. A final performance can be used a way to celebrate success within education which isn't focused on grades. Overall, providing opportunity for self-expression outside of the classroom.



General Public Audience (All ages)
Tertiary User

To generate an income, there is an opportunity to open the performances to a wider public audience. Along with providing café and bar spaces to generate extra income. The intention is for all profits to be reinvested within the venue. Another way to generate an income is to hire out spaces to touring companies within the industry By selling tickets to performances for a small fee, theatre and the arts become more accessible for the public. Historically, theatre has been deemed an interest reserved for the wealthy due to high ticket prices. The design brief also provides opportunity for 'Open Mic' style performances to attract the wider community.



User Diagram



Client Collage



Supported using public funding by

ARTS COUNCIL ENGLAND

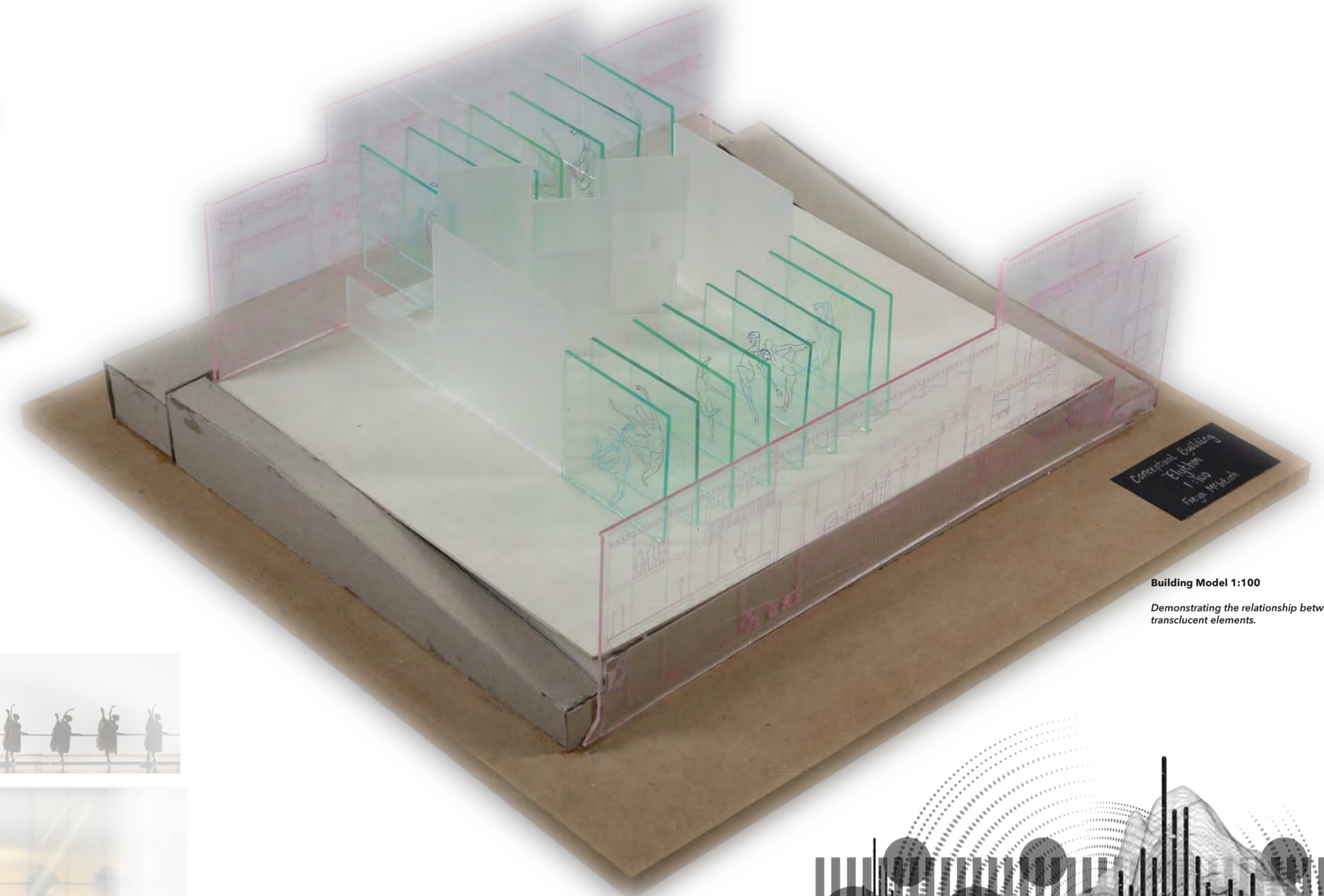
My proposed Client is the Arts Council England. Their aim is to help every child experience creativity. With their 'Let's Create' vision, they aspire for England recognise individual creativity. They believe that creativity and culture can support local economies. One strategy they have introduced is 'Music Education Hub' programme which exposes young people to the music industry by delivering high quality music education both inside and outside of school environments. In addition, they provide support to young people seeking careers and employment within the industry. My proposal, is to take this principle and apply it to the Dance Industry.

research process...

conceptual approach...

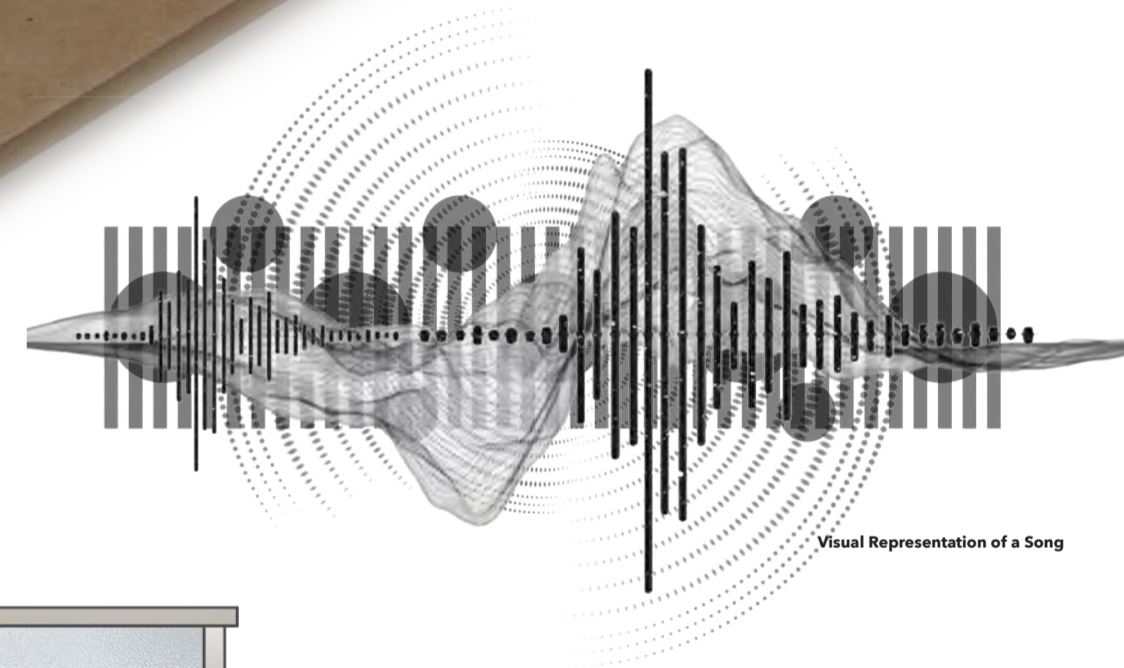
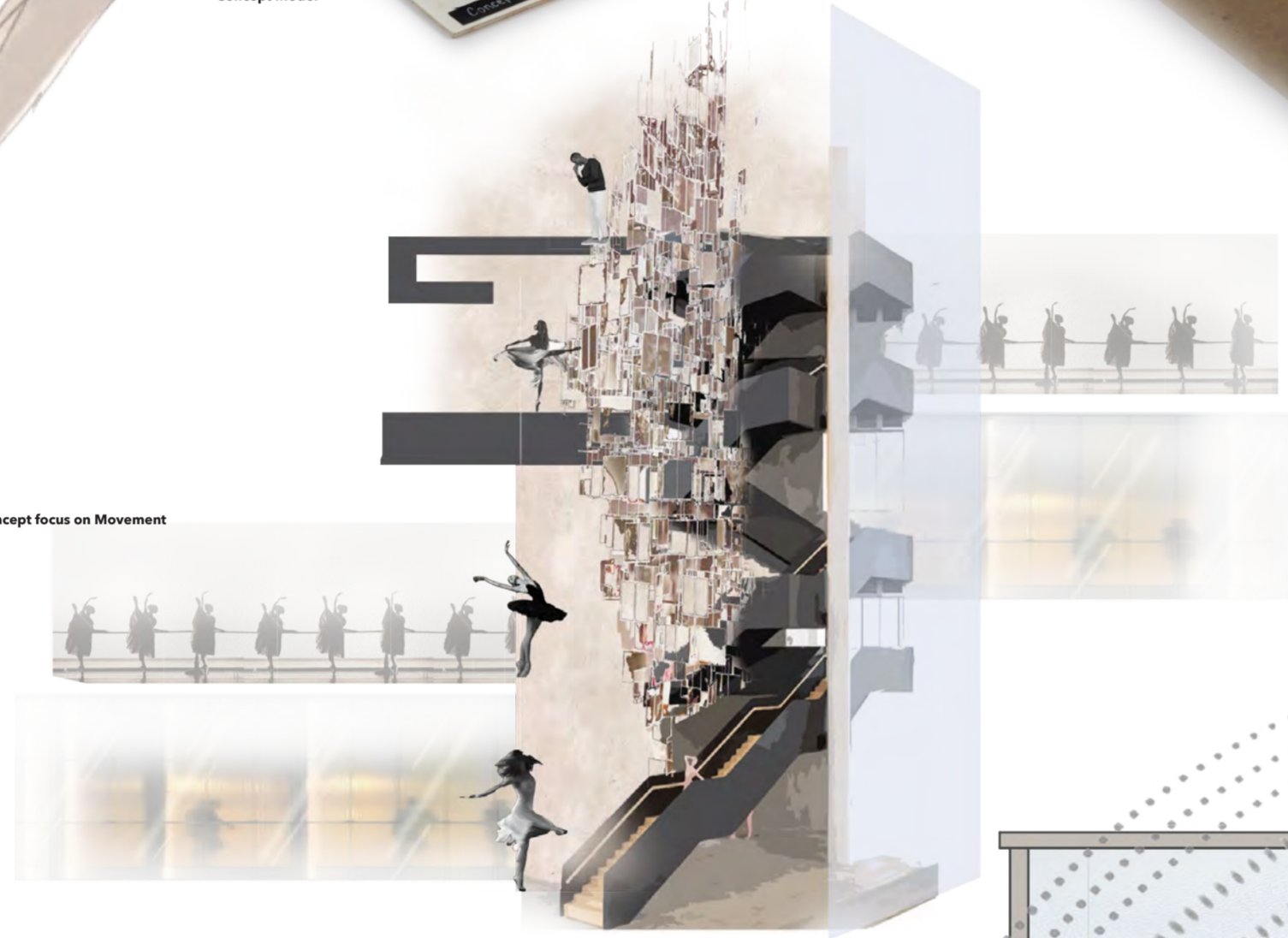
The concept for this project focused on visibility, exposure and movement which stemmed from my research. To represent the idea of exposure to the performing industry I used the idea of transparent vs translucent. With transparent elements to show the performance as this is the element of the industry that the public understand. Whereas the translucent elements include the rehearsal stages and backstage process that is often overlooked. The conceptual model uses matchsticks to demonstrate the movement between these stages which will become the dancers/ users. Translucent glass will be used to provide a glimpse into rehearsal spaces without distraction for the dancers and spoilers for the public.

Concept Model



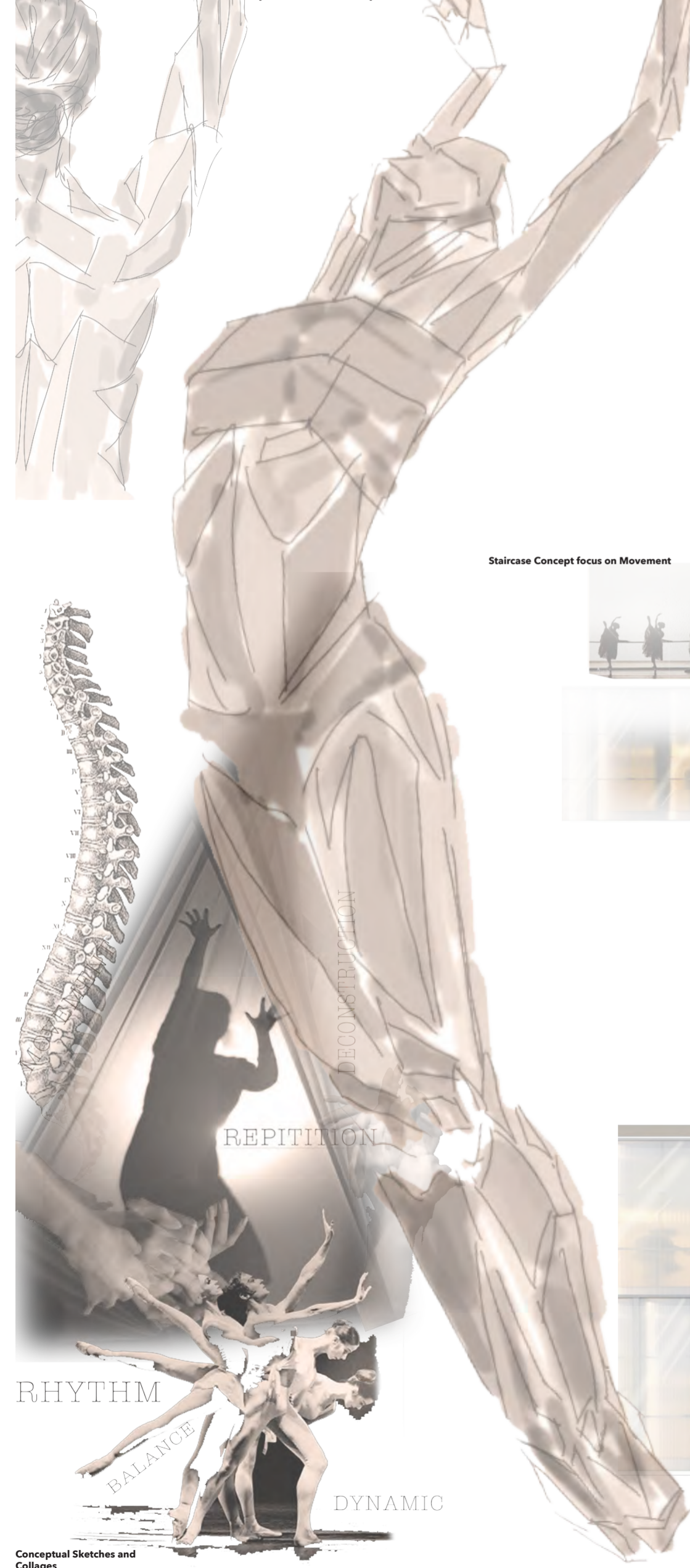
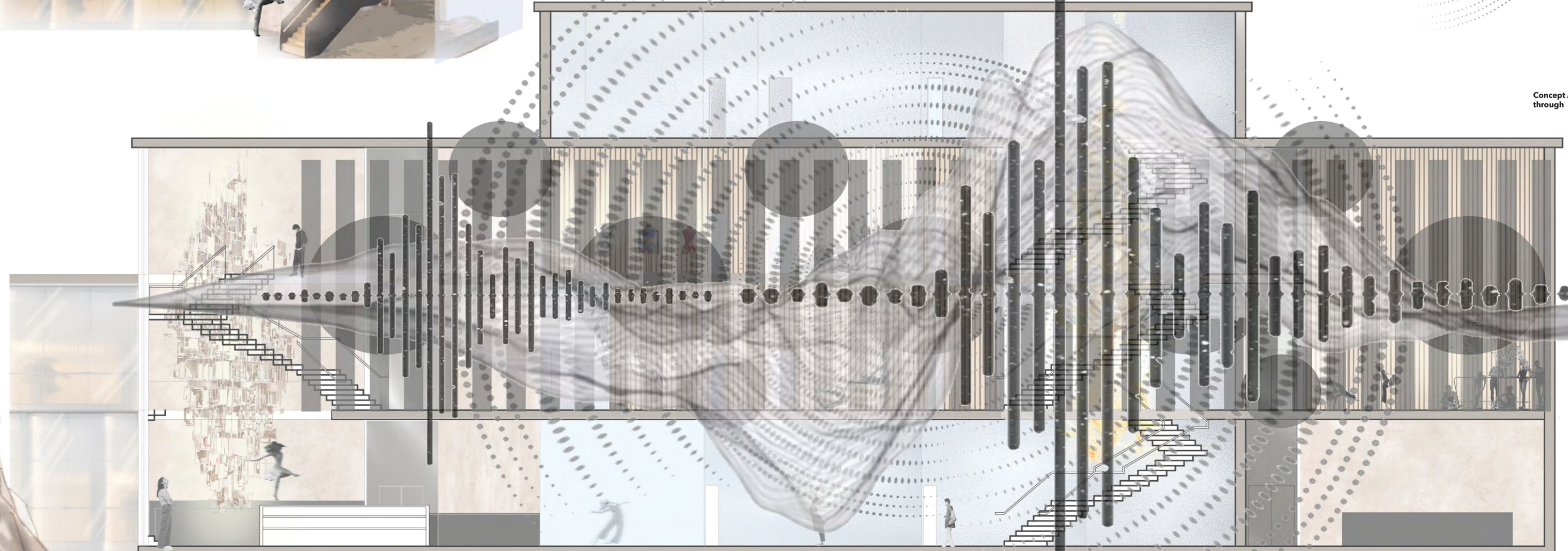
Building Model 1:100
Demonstrating the relationship between movement and translucent elements.

Staircase Concept focus on Movement



Visual Representation of a Song

Concept Applied to Building through a section



REPETITION

RHYTHM

BALANCE

DYNAMIC

Conceptual Sketches and Collages

the design...

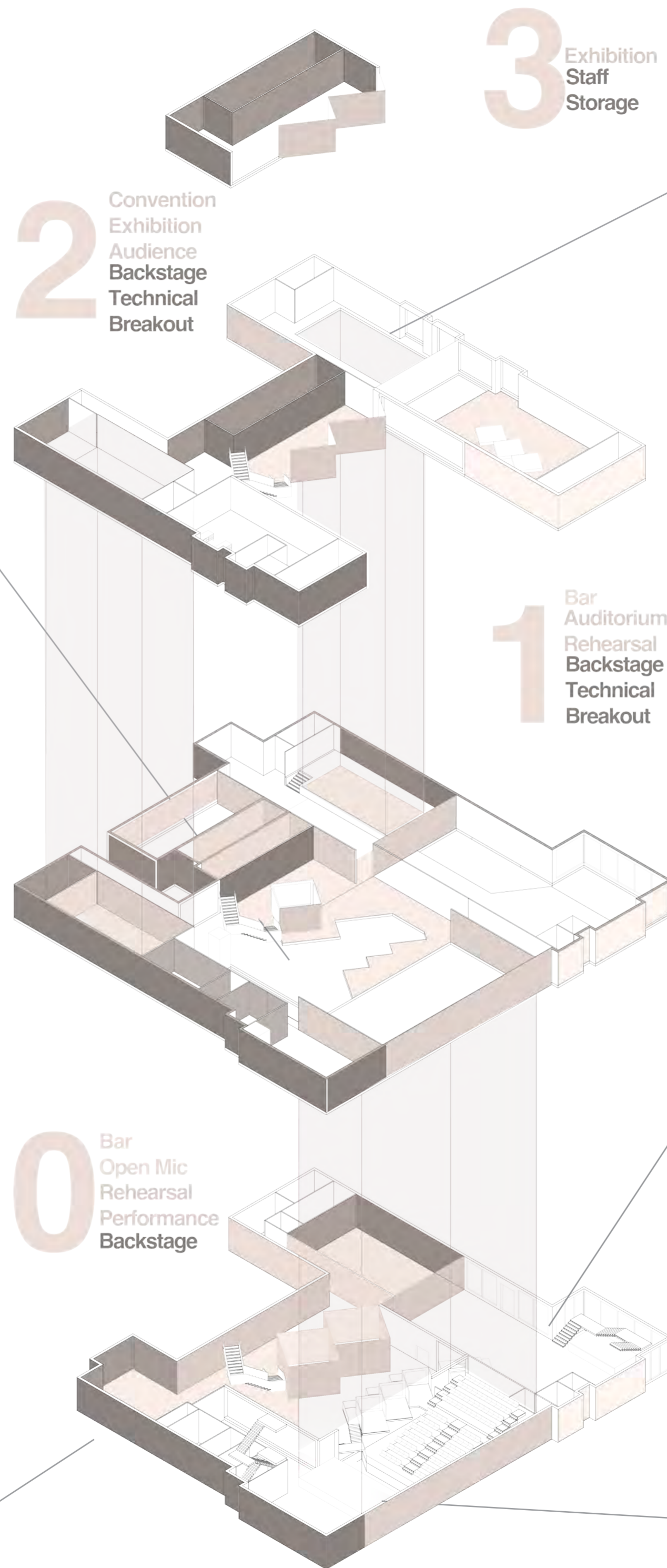


The Dance Deck

Inspired by Anna and Lawrence Halprin's dance deck, the internal courtyard features both performance spaces and viewing platforms. Contemporary dances seem to favour environments that remove traditional orientation of the dancers: for example, a proscenium arch stage that has the dancers in front of a traditional audience. Movement spills into the courtyard in two ways, behind the translucent glass with shadows as well as the 'Dance Deck' which is situated on the first floor. Pivoting doors shown on the floor plan connect the deck and the internal dancer's corridor. The use of translucent glass links back to the concept of the audience/ general public having a glimpse into the backstage work and rehearsal process of the performing arts.

The below visual showcases the dancer's corridor and gives a glimpse of both the floating staircase and the internal of the rehearsal pods. The rehearsal pods look out onto the internal courtyard. Pivoting doors allow for the spaces to open up into the corridor so that movement can fill the space. Exposed concrete and lime wash plaster was selected to compliment the existing materiality of the building. Dancers can also use this space to warm up and rehearse as the floors are constructed of solid engineered timber with a shock absorbent layer. Each dance studio and dance stage uses 'Harlequin Studio Vinyl' which is the UK's top supplier of premium sprung and dance flooring.

Dancer's Corridor



Rehearsal Stage

The rehearsal stage which can also be used as an informal performance space is the exact dimensions of the auditorium stage. In addition, it has the same features of the stage, including the double height space, stage curtain, moveable stage wings, and frame structure above for hanging stage and set pieces. The mezzanine floor features a space for dancers to warm up and watch other dancers rehearse. In addition, it will be fitted with the same technical equipment so that workshops can be held. In front of the stage, dance flooring to the exact dimensions has been used, the purpose is for the choreographers to show their exact directions or as a warmup space. Also, it offers the opportunity to invite school students into the rehearsal process by providing them with a separate space to mirror movements.

The visual below showcases the connection between dance studio 2 and the main foyer space. To separate the two spaces, the wall will be constructed of translucent glass, to provide the general public a glimpse of dancing and movement. The open mic style stage also provides opportunity to create a lively welcoming environment whilst also giving aspiring performer's the chance to perform and share their craft.



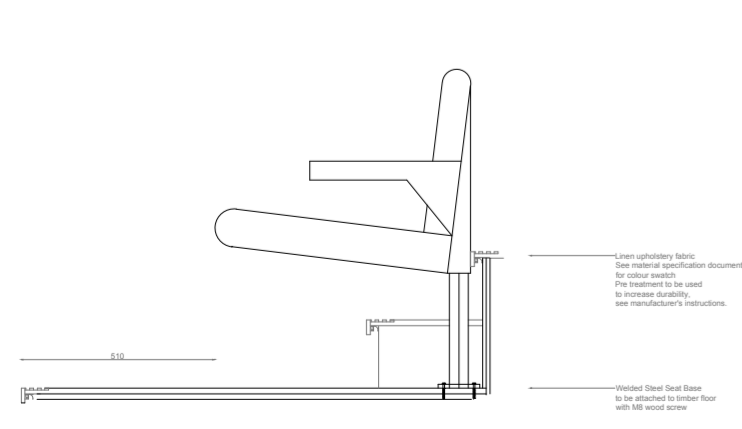
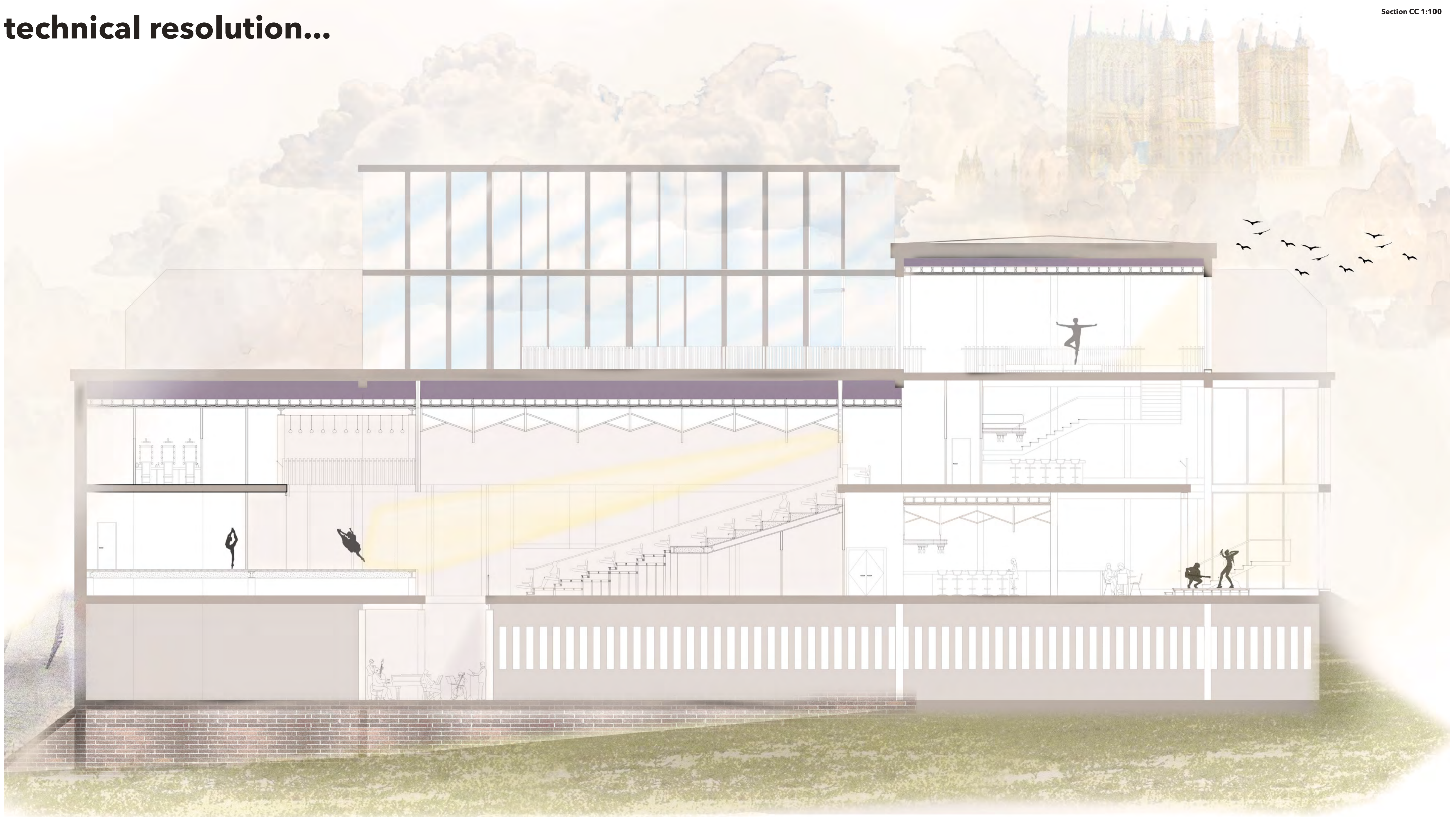
Studio 2 and Foyer

The auditorium has a more traditional approach to design which can appeal to both touring companies but also aspiring performers to gain experience. Viewing Pods have been implemented at a raised level to appeal to the school students so they have more movement whilst performances are taking place.

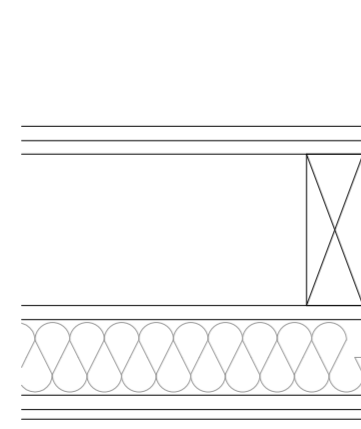


Auditorium

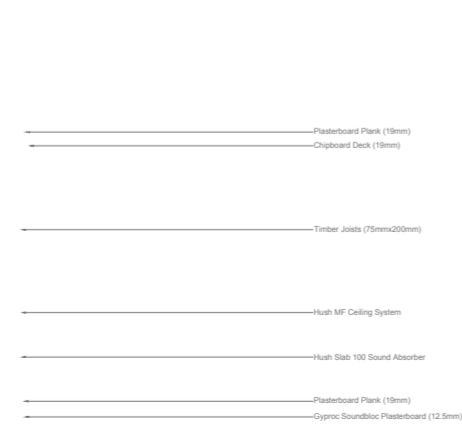
technical resolution...



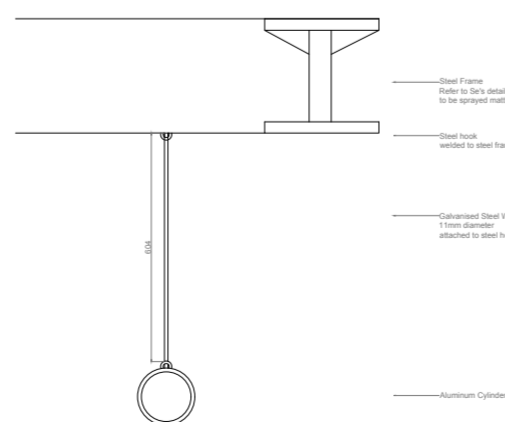
Auditorium seating 1:20



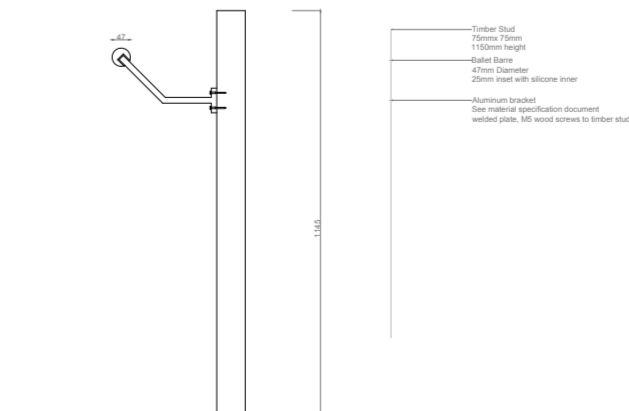
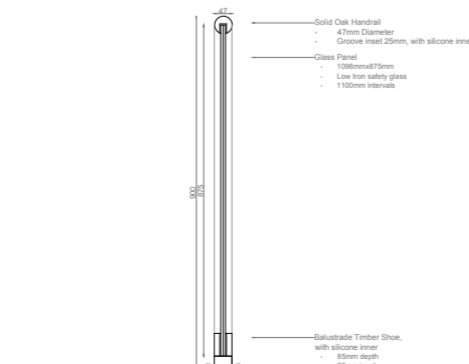
Ceiling Detail 1:10



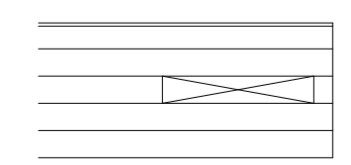
Stage/ Set Aluminium Frame 1:20



Glass Ballustrade 1:20



Ballet Barre 1:20



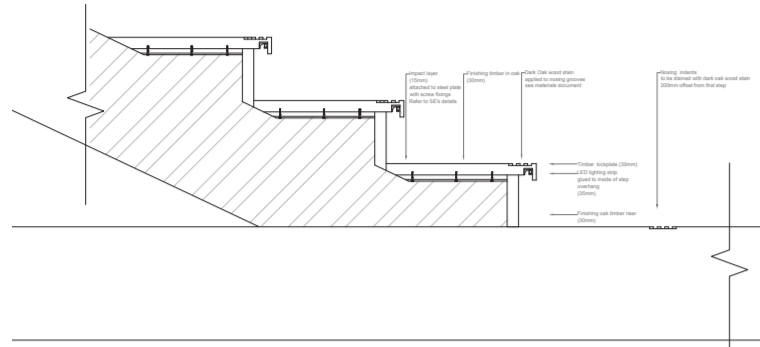
Dance Floor Detail 1:5

- Hydrophobic lacquer and performance floor, 200, (20mm)
- Moisture resistant suspension board (18mm)
- VSP Plywood (18mm)
- 2x Layers of custom machine southern yellow pine (24mm) (Phase 4 of floor assembly)

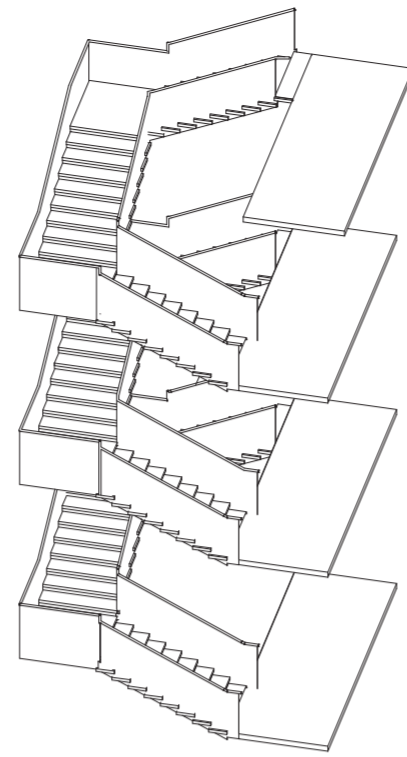
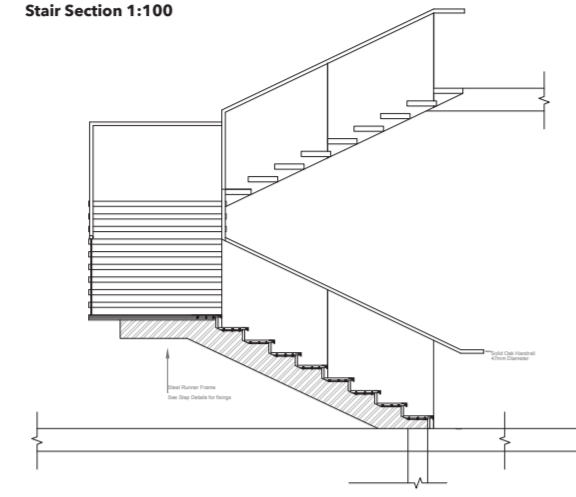
detailing and materiality...

Section AA 1:500

Step Detail 1:20



Stair Section 1:100

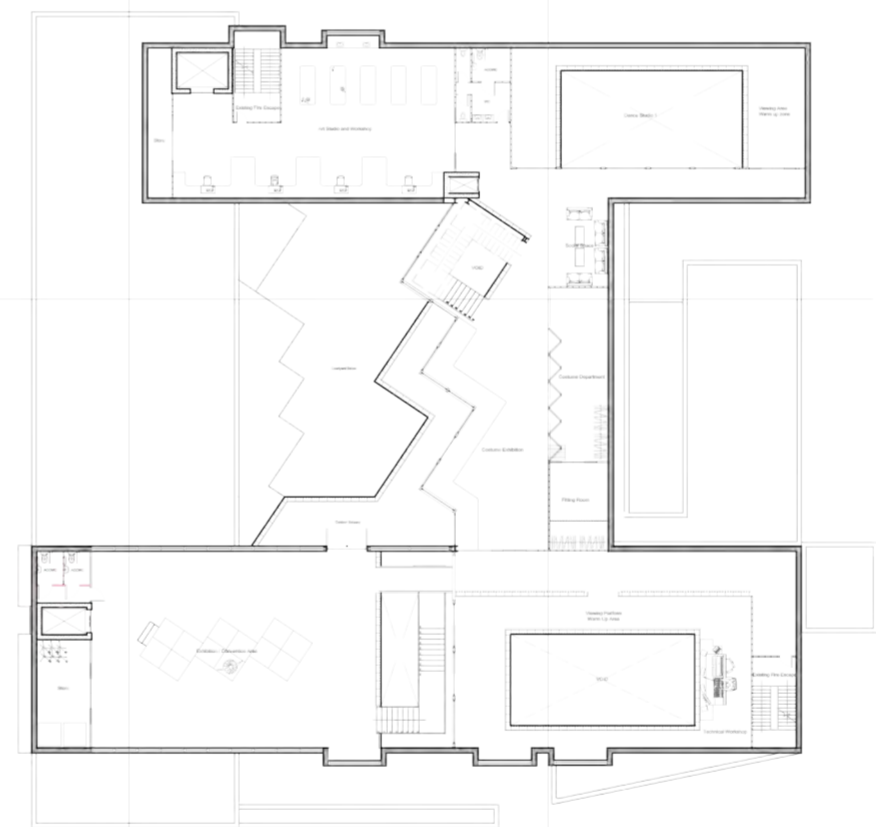


Stair Axonometric Outline
Not to Scale

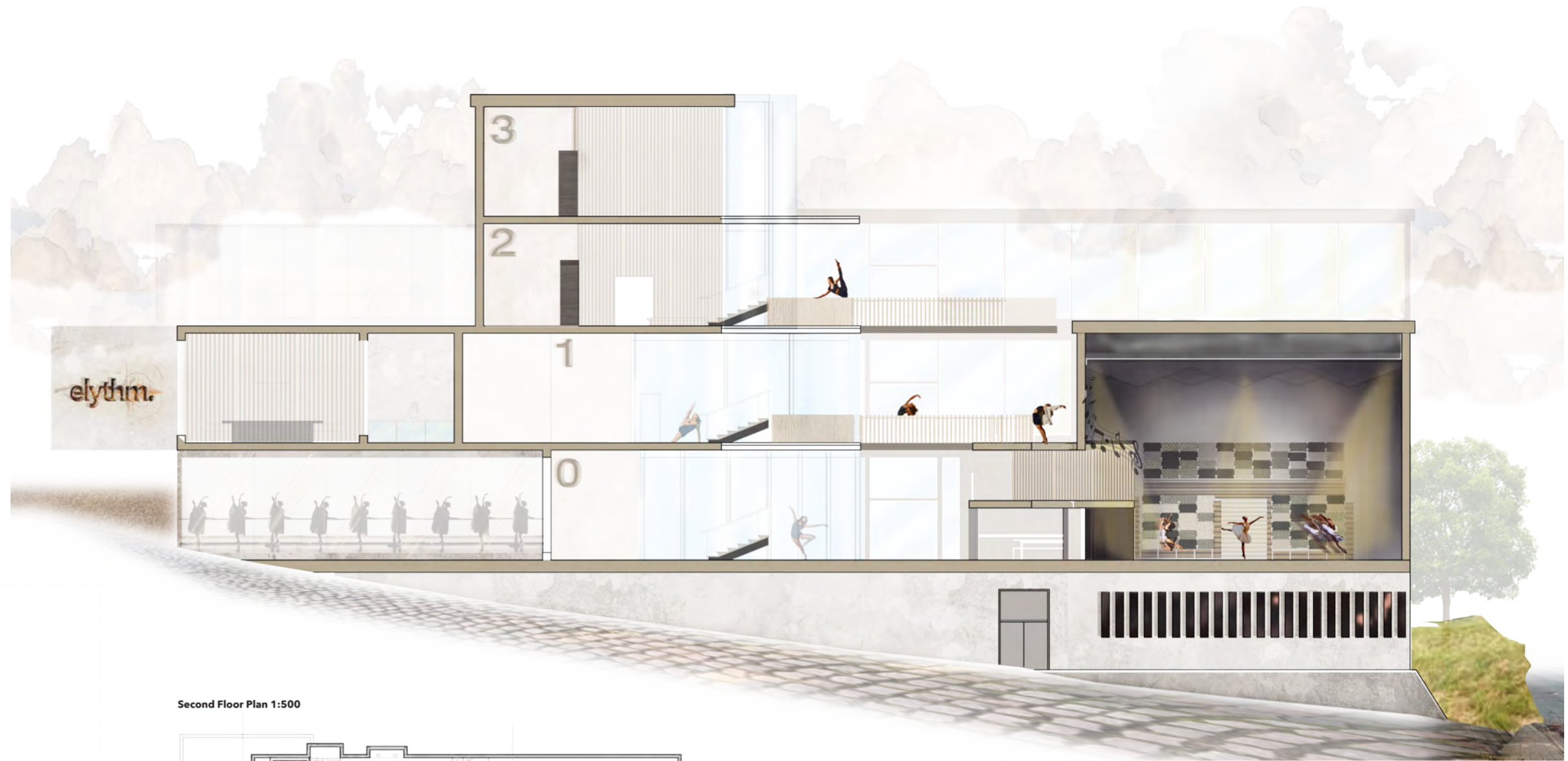
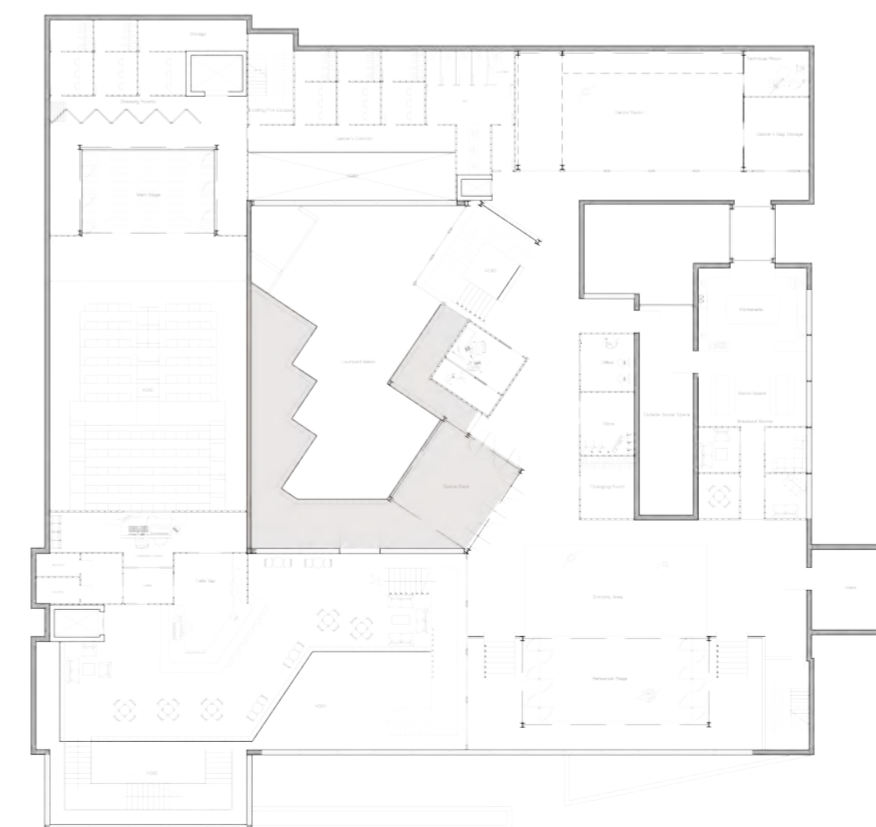
Ground Floor Plan 1:200



Second Floor Plan 1:500



First Floor Plan 1:500



Initial Conceptual Section
Not to Scale

