



community learning hub



Sun path



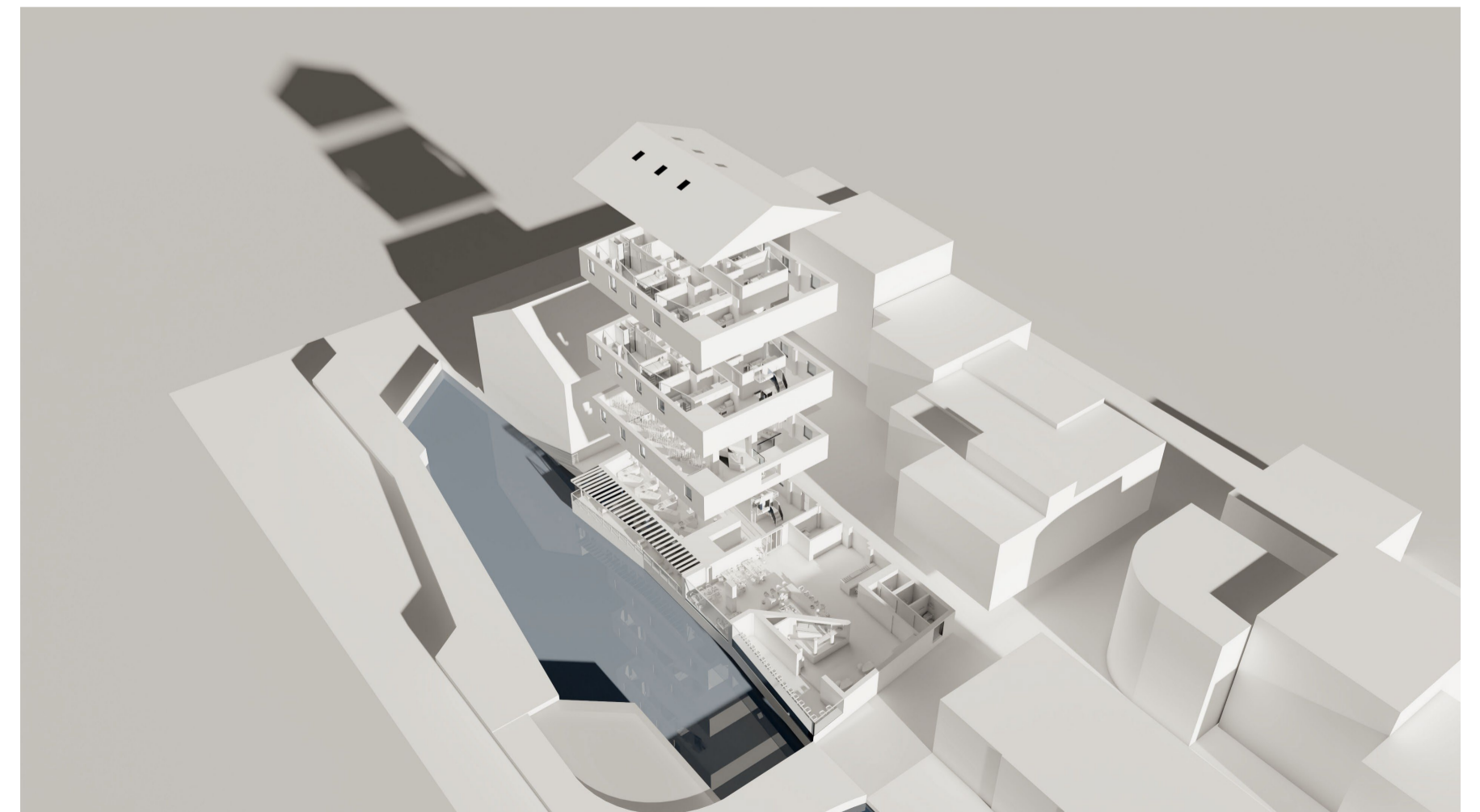
Wind path

SITE OVERVIEW

My project is based in the centre of Newark, which originated in a historic Mill House. The River Trent and the public bridge surround the location of the site. Analysing the surrounding environmental conditions in this location helps to define my design proposal, allowing the space to fit amongst its environment and be well-considered.



Sectional View



Conceptual axonometric

FEATURES OF THE SPACE



Horticulture Lab



Cooking workshop



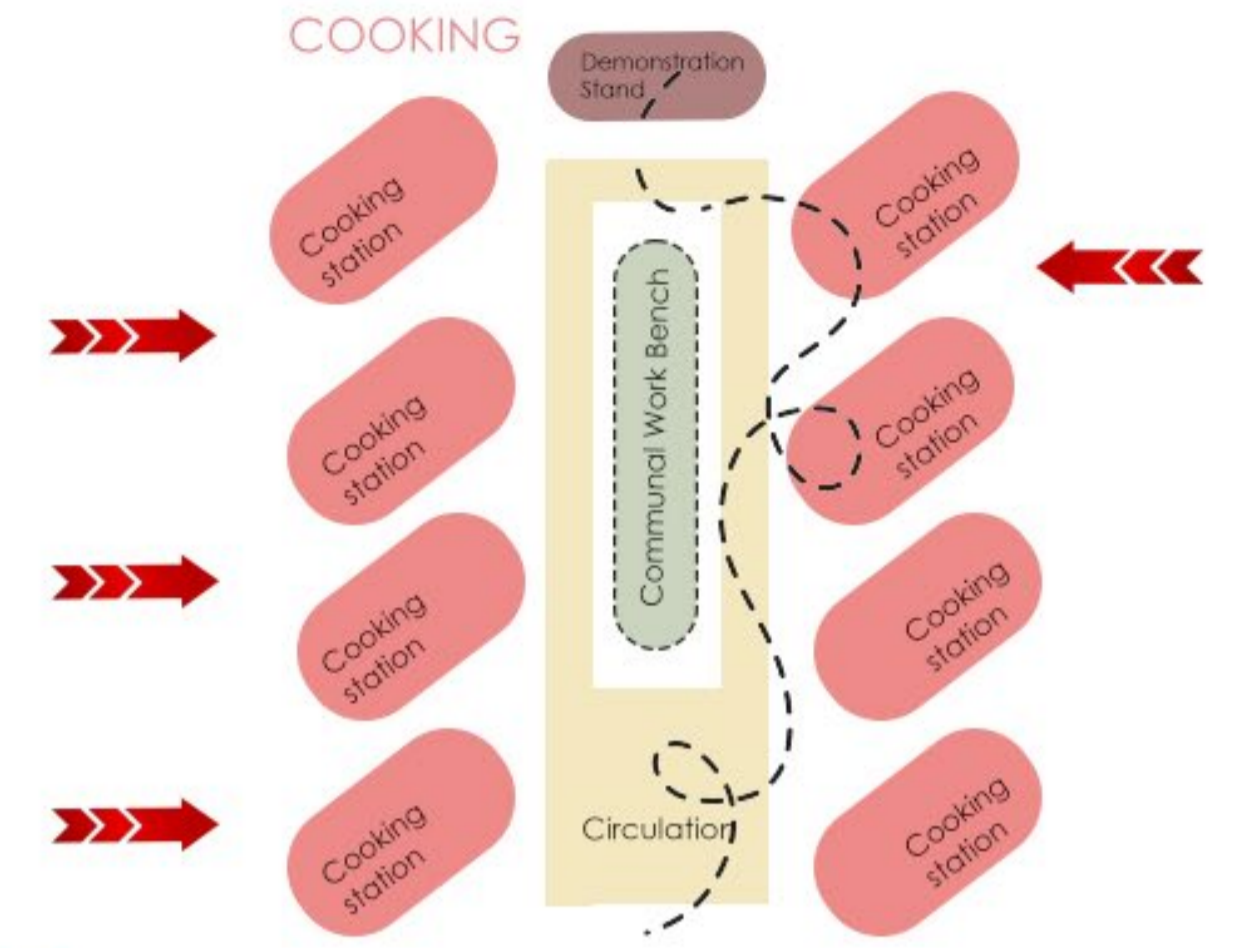
Accommodation



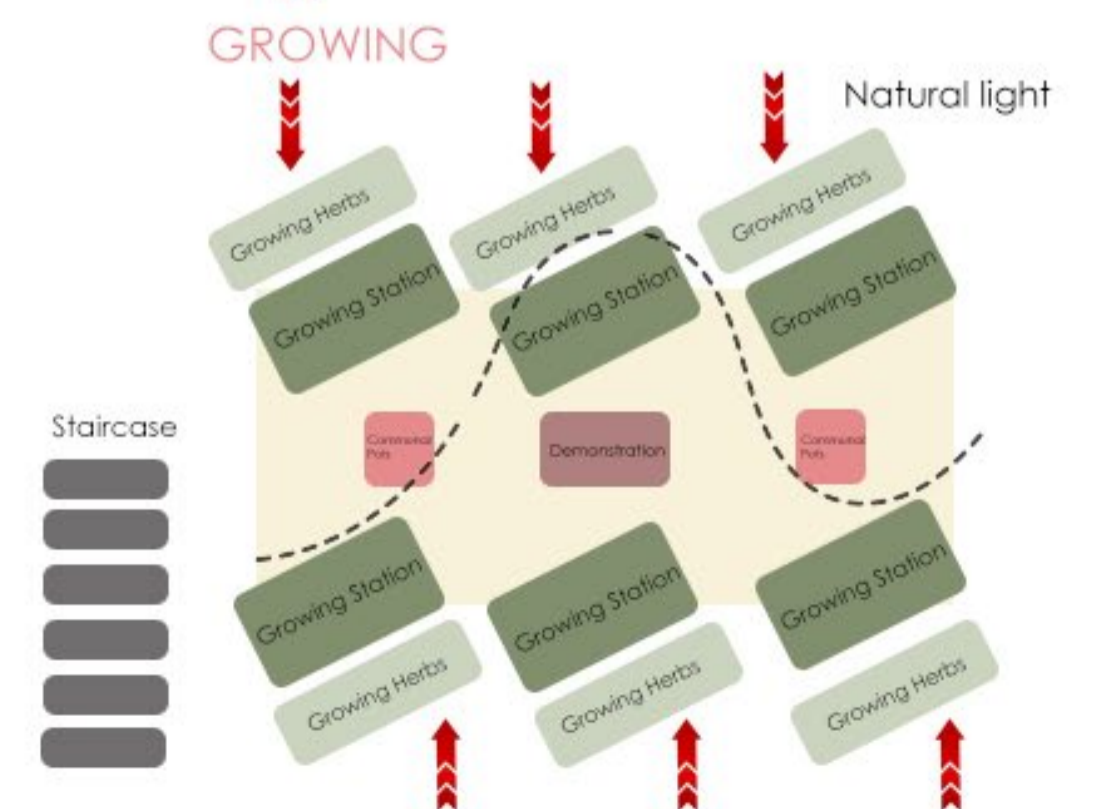
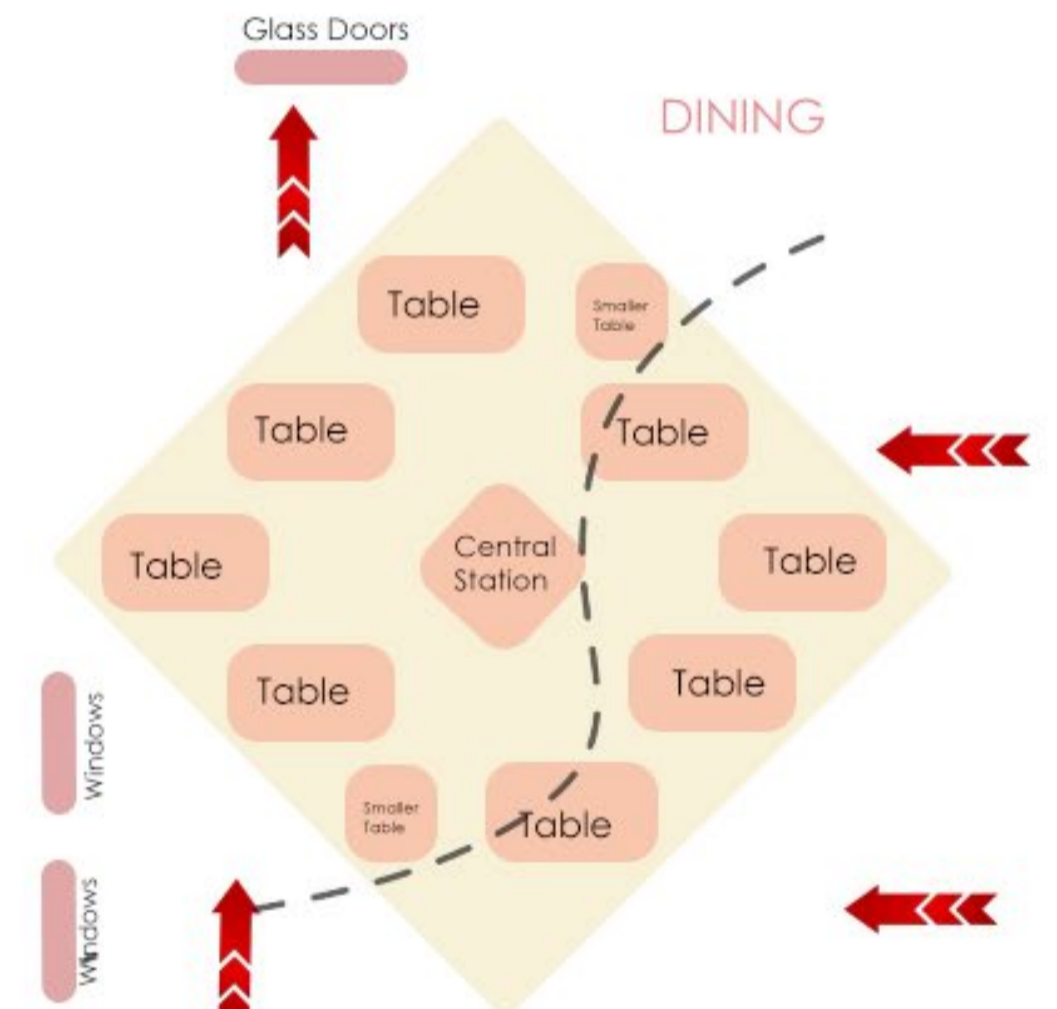
Innovation in practise

My approach to this project is to address current problems in Newark and design a solution through the interior of this building. Some of the problems I have discovered consist of homelessness, violence, antisocial behaviour and an increasing number of disadvantaged individuals in Newark. My project responds to the IE conference theme of Innovation Practice & Process through its innovative and well-considered approach to community living and development. I have altered and changed the structure of the original Mill House in order to create a modern and multi-functional space, tailored towards its targeted user. My design focuses on the experimentation of spatial arrangement to create different learning and development spaces on each floor of my proposed design.

SPATIAL DISTRIBUTION



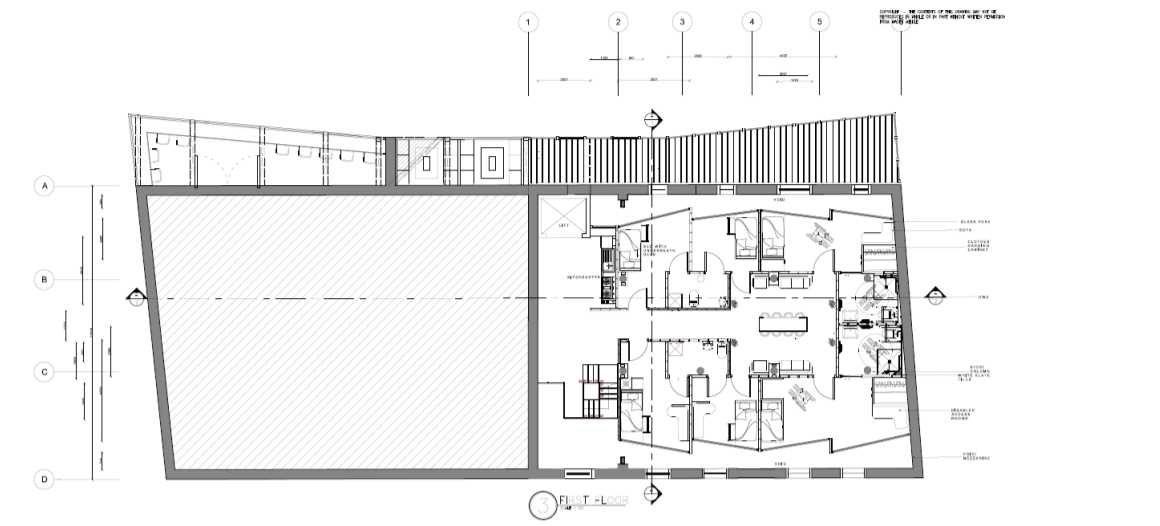
- Cooking Stations ●
- Circulation ●
- Communal Benches ●
- Public Dining ●
- Building Structures ●
- Growing Stations ●
- Transport ●
- Demonstration ●
- Light Flow ➔



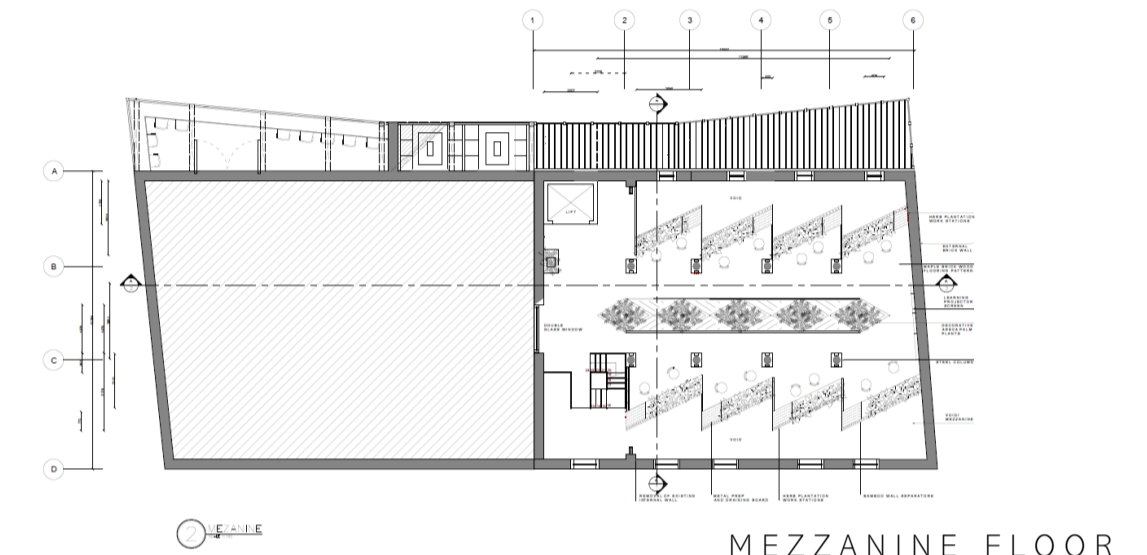
innovation through floors



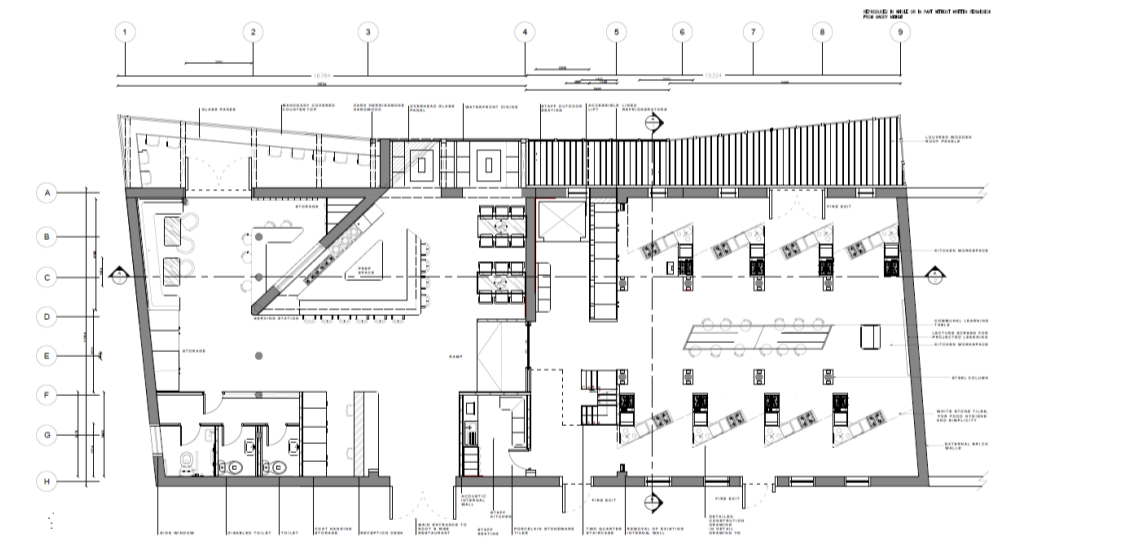
Sectional View



1ST & 2ND FLOOR



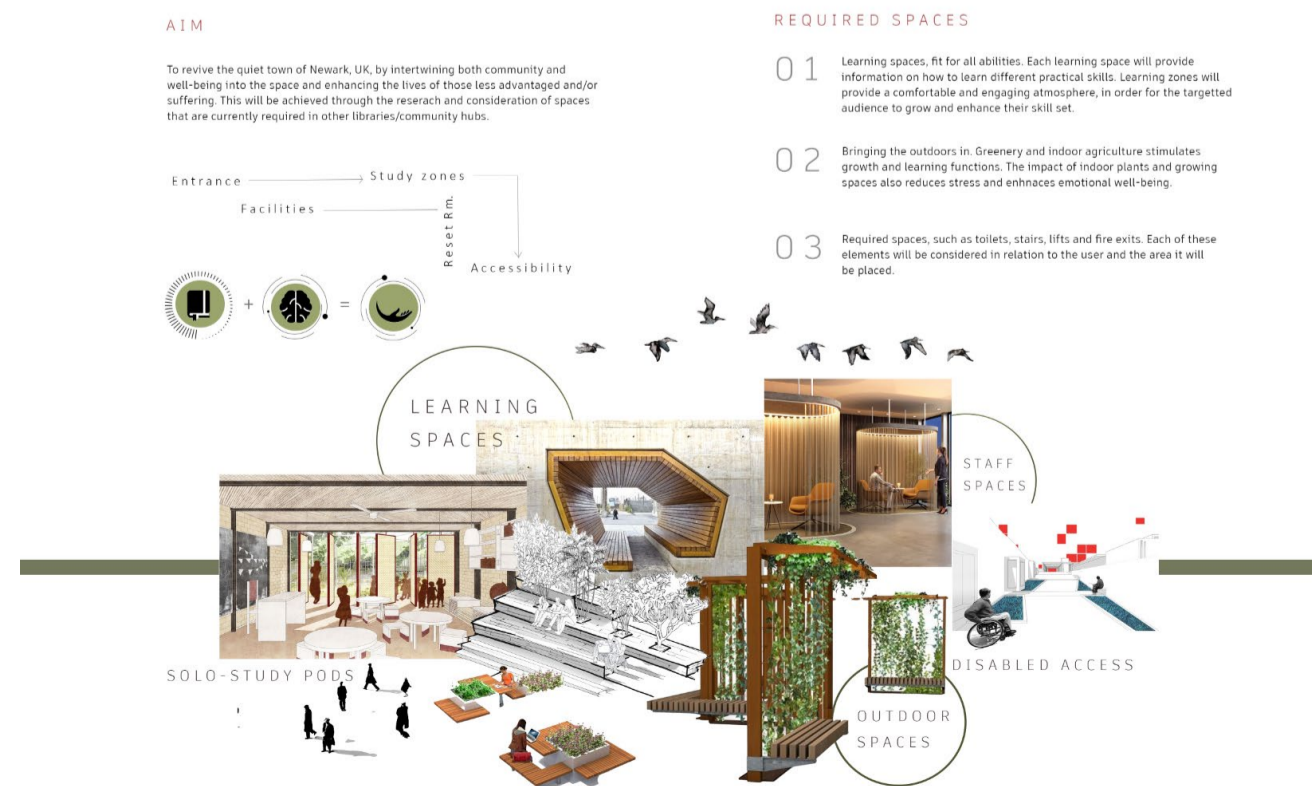
MEZZANINE FLOOR



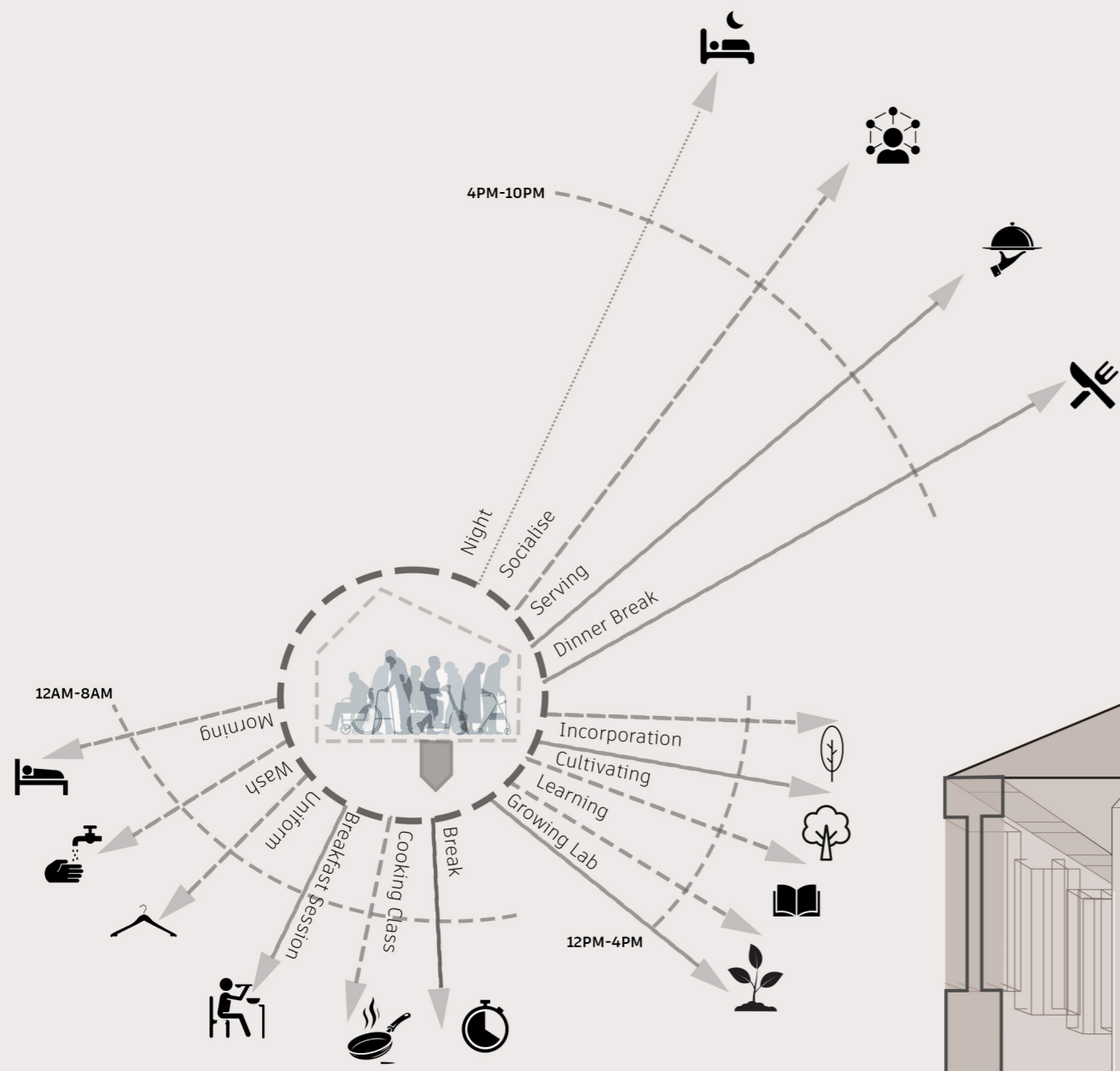
GROUND FLOOR



Proposed section



Newarks Identity



Newark is a small but affluent town, containing many historical features that travel back to the heritage originated within this area. This community space offers the people of Newark new life opportunities and a chance to gain important skills. Many homeless people and less advantaged individuals are situated in Newark, therefore making it most important to help improve their lives. The LaunchPad Project allows less advantaged people to showcase their skills and connect with other likeminded individuals. Engaging in community is a significant part of life, and something that should be celebrated.



1st & 2nd Floor
Accommodation

Mezzanine
Horticulture Lab

Ground Floor
Community Kitchen



FIRST FLOOR
Accommodation

FIRST FLOOR
Accommodation

MEZZANINE
Herb & Horticulture Lab

GROUND FLOOR
Main Entrance