



William Champion's ruined, labarythian pleasure garden, located in Warmley, Bristol, is all what's left of a metal working dynasty. The only traces of the Warmley Brass works are the industrial scars left on the landscape and grotesque, fractured remnants of a Grotto. Made up from Clinker blocks, a bi product of brass production, the Grotto is an eerie, uncanny relic of an elitist place of escapism.

From these ruins, I have designed a Sanatorium. A place for respite, contemplation and recovery for patients suffering from Long COVID.

It seems fitting that the questions of how future interiors will respond to post COVID life, arise from Champions ruinous architectural form, just as humankind will also have to adapt and be reborn from the pandemic.

Using multi disciplinary tools of investigation, I have mined the site to create contextually responsive architecture which demands the most from the landscape, yet doesn't defile the original context.

Grotesque fragmentation





|0:16

Inspecting the negatives



|1:13

Tray development of the prints



|2:34

Hanging to dry



Lawn towards viewing mound



Internal courtyard



East corridor



Chequered wall



Grotesque niche



Chequered Courtyard



Laurel walk track to grotto



QR Code to *Developing the Grotto*

<https://www.youtube.com/watch?v=1YNg95vWPFc>



Using a 6x6 medium format camera with 400 ISO film, the textural substructures and networks can be revealed and more appropriately responded to with new architecture.

By then enlarging the negatives of the grotto to 10" x 10" in the darkroom, photographic analysis of the site becomes a powerful tool of investigation.

The tactile nature of the prints allow identification of details and patterns usually lost with conventional analysis techniques. Particularly in the clinker's labarythian aesthetic, as well as the light moments cast inside the grotto from the overhead light wells.

The practice of darkroom photography yields a more intimate bond between the subject and the investigator allowing more rigorous scrutiny.



Created as a chemical bi product from the industrial process of brass production, the clinker slag can be cast into blocks used for building the original Grotto. Although the blocks are brittle and will shatter under impact, they have an iridescent colouring and intricate fractal texture.

The blocks are thematically linked to the approach of the Sanatorium.

The materials are violently hewn from the earth, used, then returned to the ground. Similar to the way COVID 19 has profoundly and brutally disturbed every aspect of our lives.

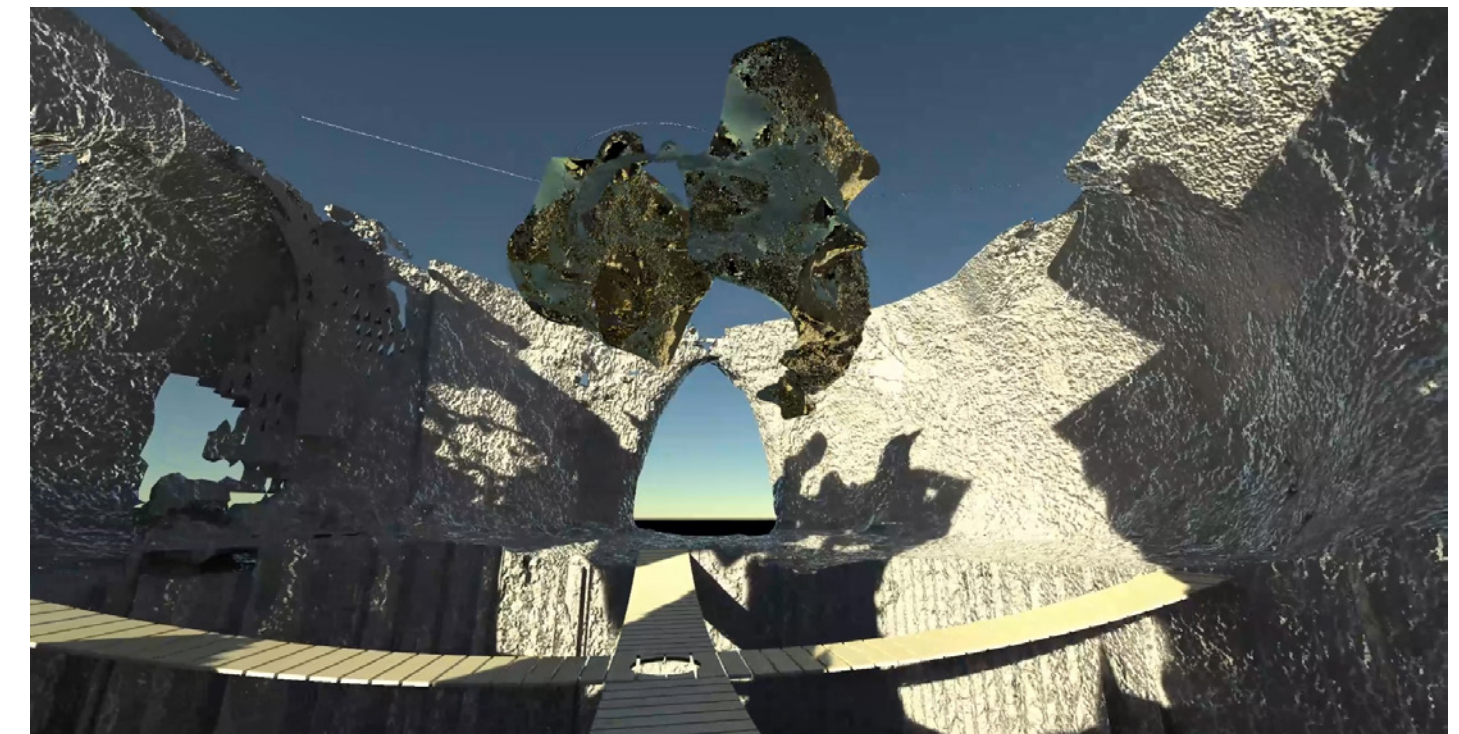
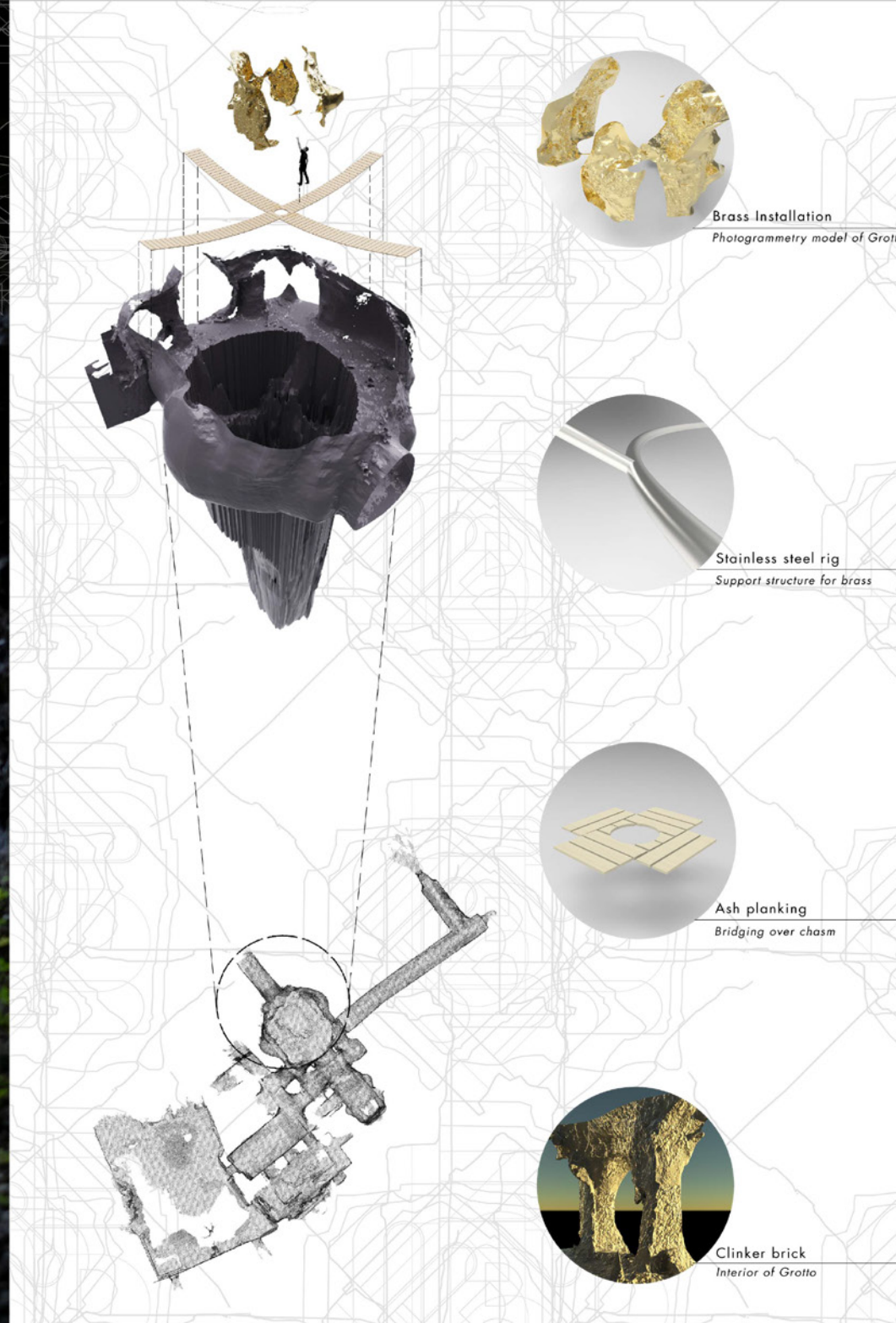
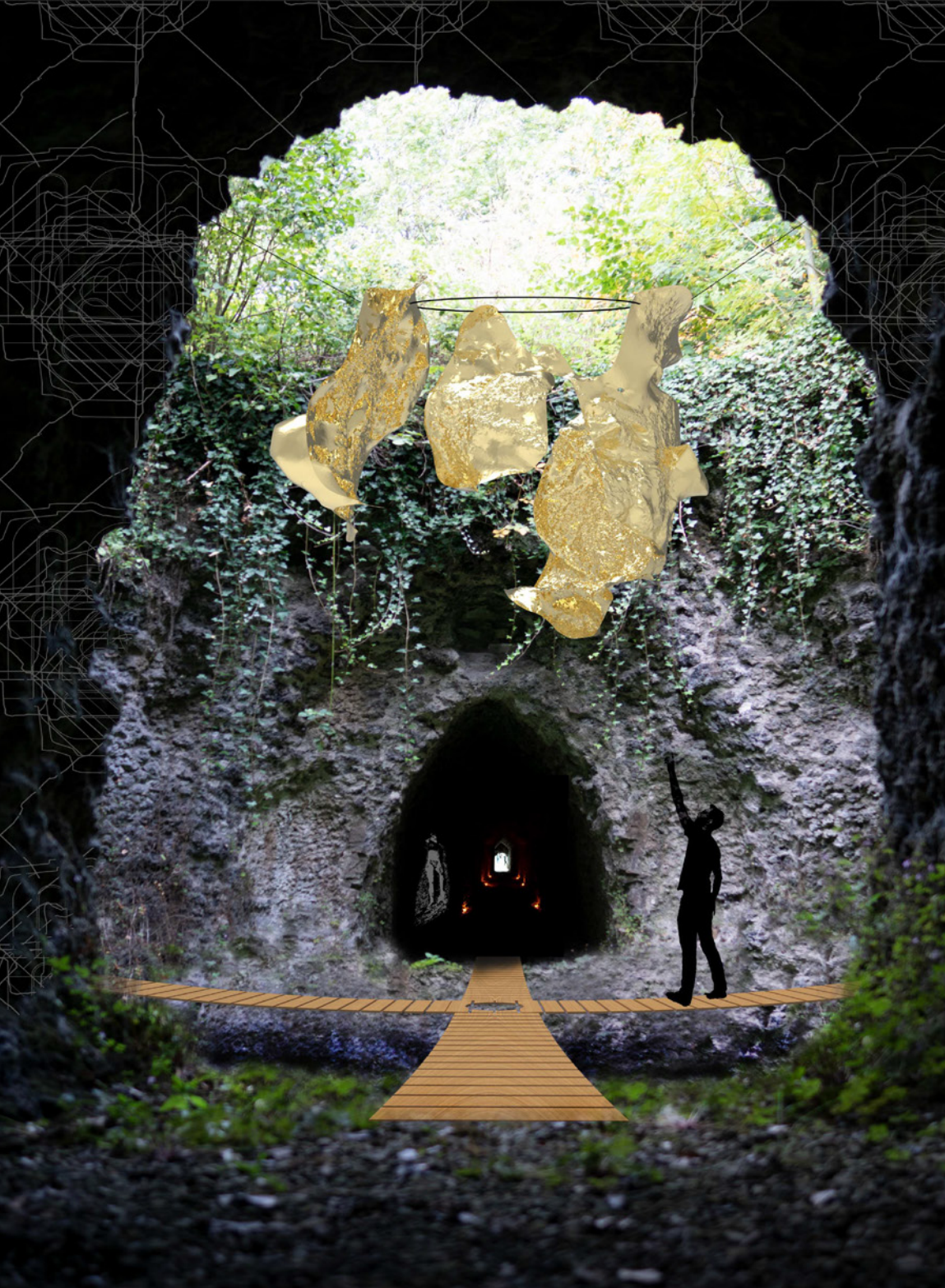
The sanatorium will bedded into the ground to provide respite for sufferers of Long COVID to feel sheltered and secure during their recovery.

This will help heal the psychological scarring of isolation, asphyxiation and anxiety.



respite.

a short period of rest or relief from something difficult or unpleasant



10:23

The brass intervention provides a focal point for the inhabitants of the space, introducing light and clean air to a their healing process.

The walkway over the chasm impresses the precarious nature COVID 19 has forced upon everyday life.

The installation of a photogrammetry model into the Grotto space.

The sculpture is suspended above the pond to form a central core for a relaxation and contemplation space. The materiality speaks to the industrial history of the Warmley site's production of brass.

The form of sculpture is captured through images of the courtyard space, then contorted and rendered by a computer.

Thus creating a paradox of reflection.

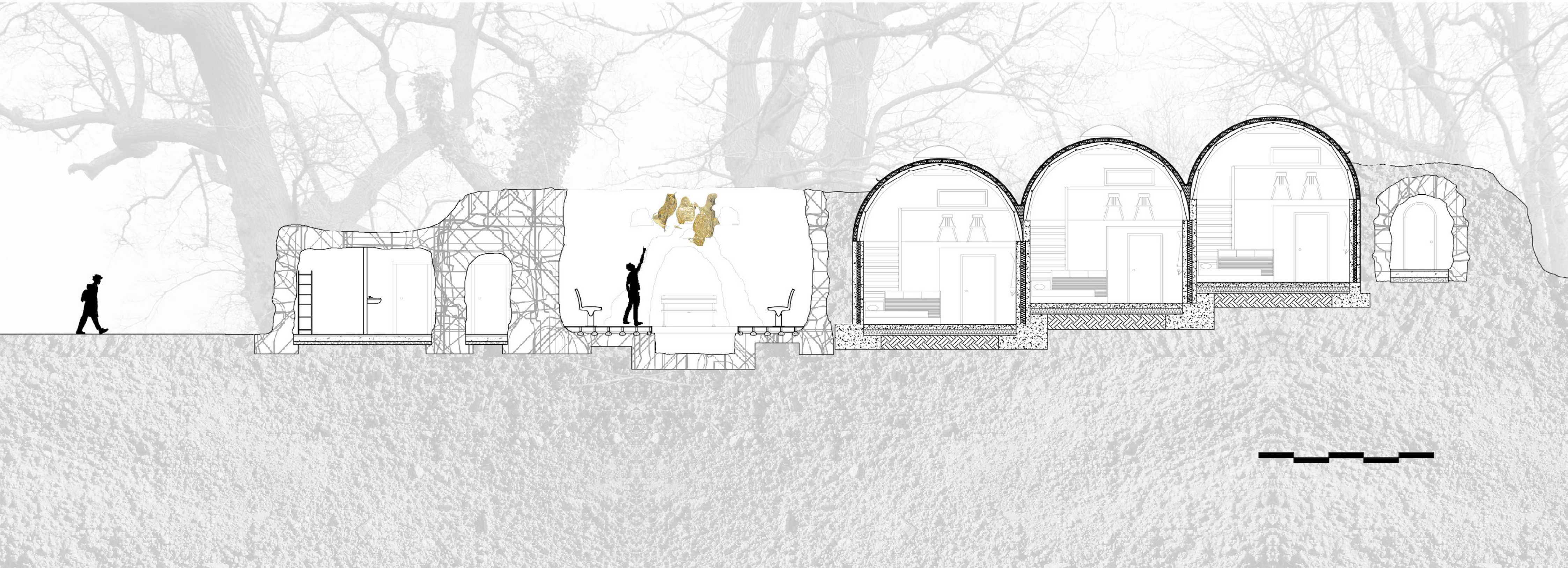


QR Code to *Reflection*

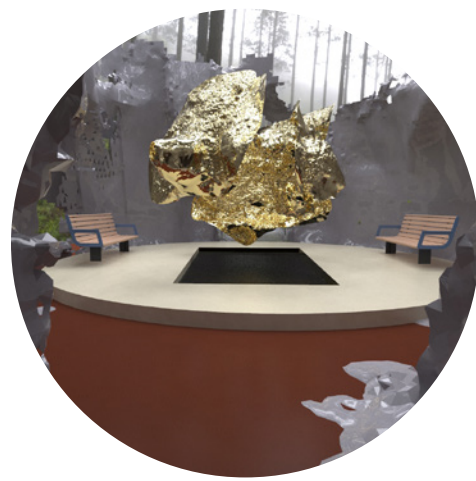
https://www.youtube.com/watch?v=77rsN-_BP5E

It is both an abstraction of the courtyard, as well as a mirror for inhabitants to see themselves, encouraging literal personal reflection, aiding the psychological healing process.

This is the patient's start on the path to recovery- realising their current state and accepting the beginning of healing.



East corridor



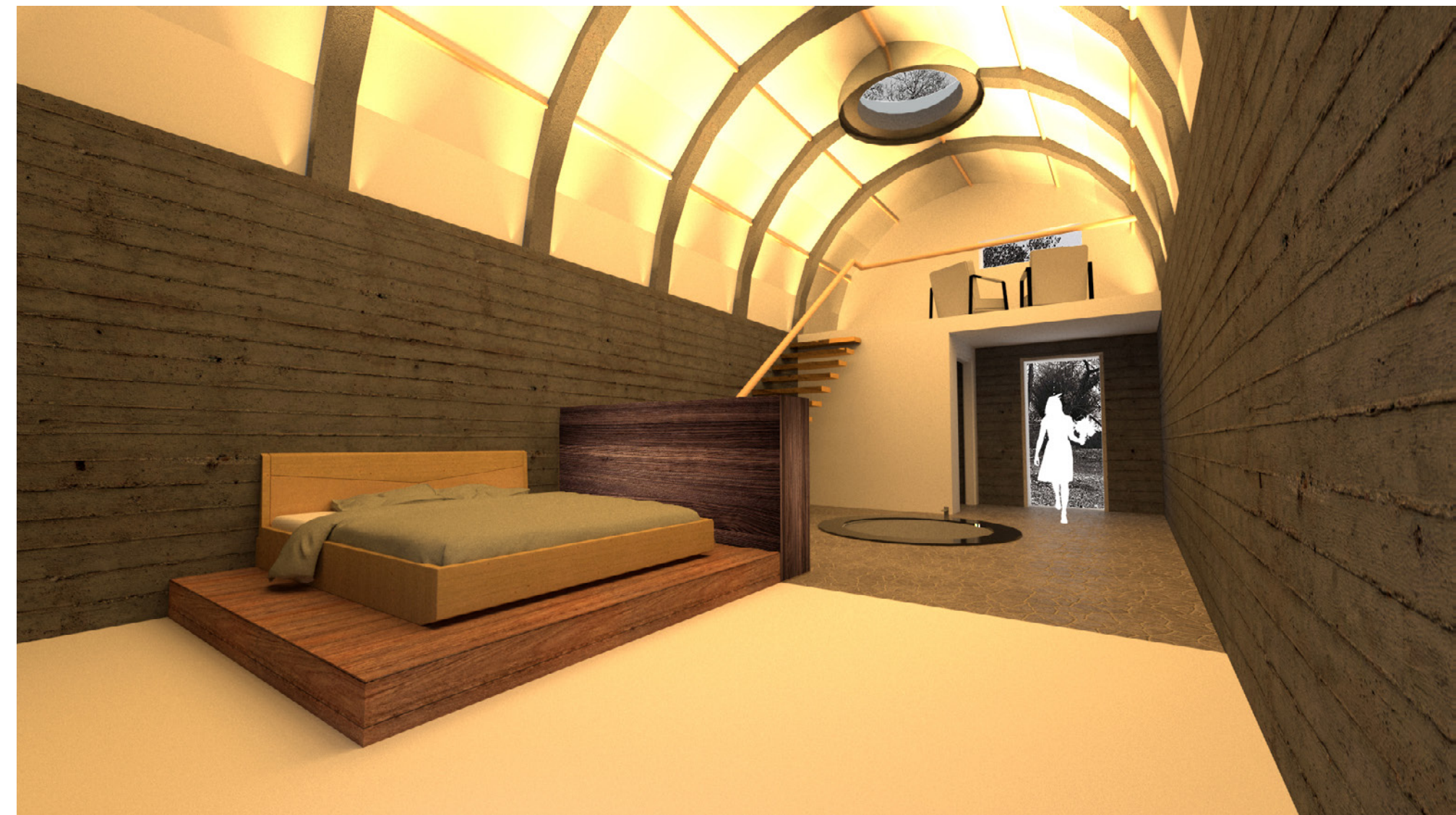
Reflection
Suspended brass sculpture



Oak chair on mezzanine
Designed and built by Robinson

The resulting architecture is very similar to Tolkien's Hobbit Hole. A subterranean, sympathetic space allowing safety, restoration and reflection resulting in mental and physical rejuvenation.

We **must** demand these qualities of our future interiors as a response to COVID, the scars from which, similar to Champions pleasure garden, will remain long after the immediacy of the virus.



Proposed sanatorium accommodation