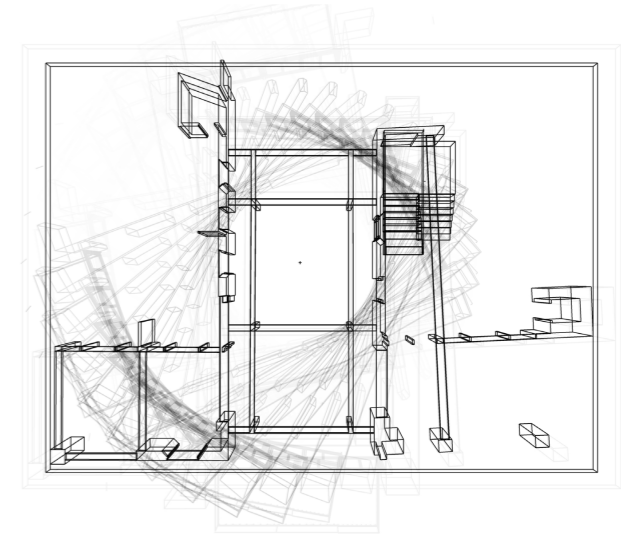




Scan QR code to watch site investigations



Axial Rotation North - East
Through Promenade

The Place Beyond the Screen

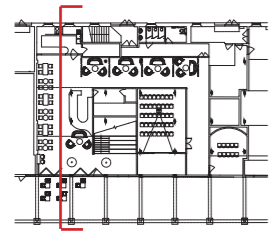
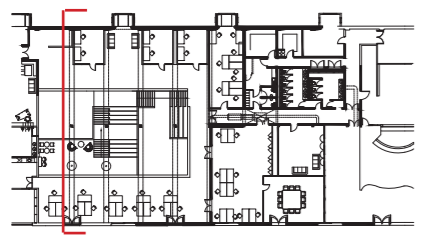
visual, sensory and social qualities of the site were addressed by looking at how the architecture of the Watershed, both primary and secondary, determined the movement of people in and around the building. This illuminated the parallel corridors of movement encouraged by the 'bridge' extension. The Watershed was formerly two buildings Transit shed E and W. Following the buildings conversion, in 1982, the two were connected by a bridge on the first floor. This parallel of movement could be read as an axis through the two buildings, moving on both horizontal planes through East- West and North -South.





Short Section 1

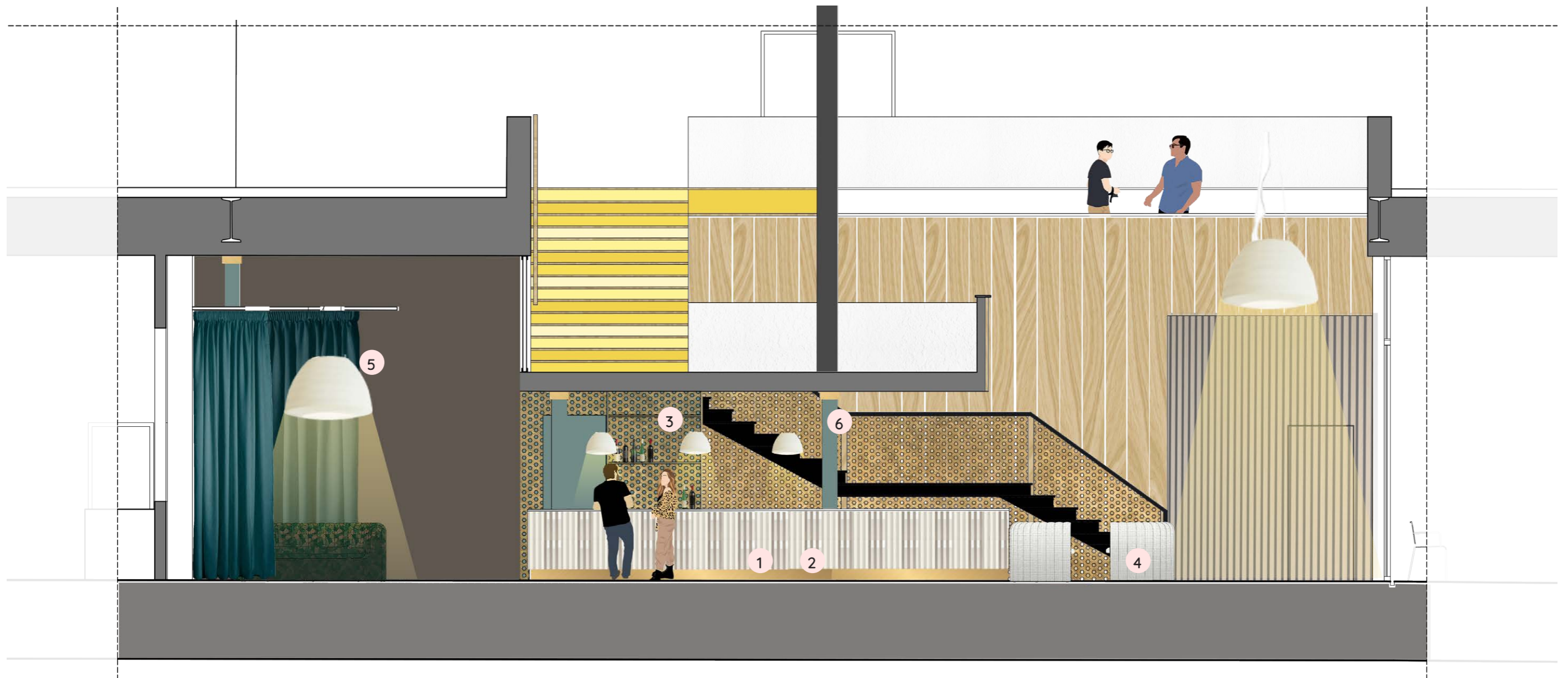
Scale bar at 1000mm intervals
1: 100



This section shows the two mezzanine floor [1 & 2] that are formed from the central staircase [3]. The mezzanines are flexible work spaces that can be used for informal meetings, exhibitions and workshops.

Mezzanine 1 allows for a 2400mm ceiling height below.

Bar



1

Mutina Tile Large White Gloss



2

Mutina Tile Large White Matt



3

Estudi Antoni Arola-La Boelaa



4

Estudi Antoni Arola-La Boelaa

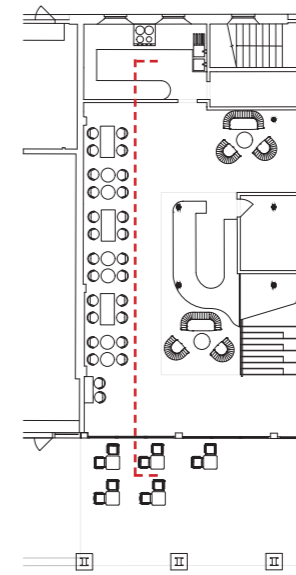


5

Bell Lamp by M & V Vivian for Axolight W90cm



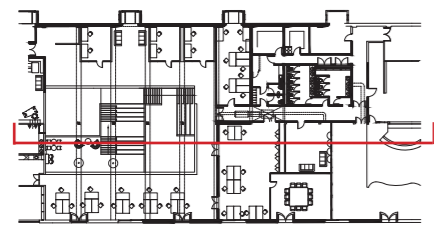
6



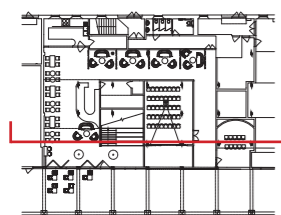


Long Section 1

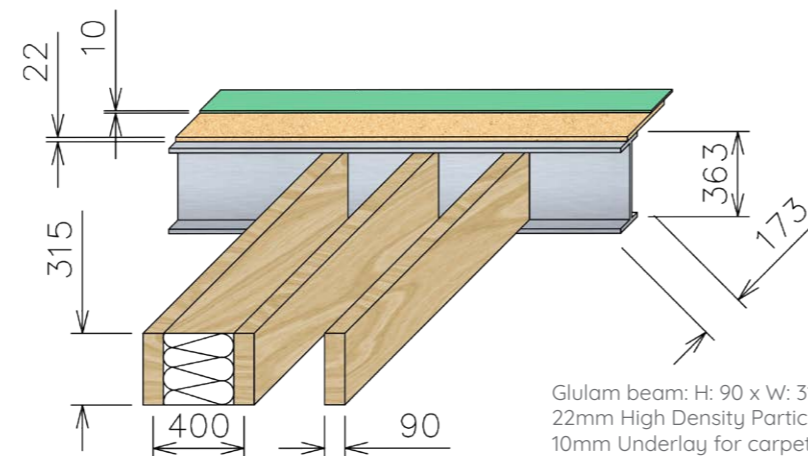
Scale bar at 1000mm intervals
1:100



1



1 Floor make up of mezzanine:

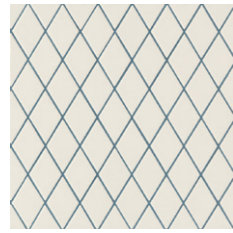


Glulam beam: H: 90 x W: 315mm at 400mm centres.
22mm High Density Particle Board
10mm Underlay for carpet.
A suspended ceiling below will hide services.

After Fridays Lunchtime Talks, visitors are invited to participate in the studio throughout the afternoon. The open plan space and informal seating allow for breakout groups to gather outside of the seminar space. The flexible spaces encourage collaboration and their visibility to the public will respond to the watershed's position as a cultural hub within central Bristol.

Bar Specification

Floor Finishes



1 Losange White Blue Stucco ceramic tile. 275mm x 275mm x 4.7mm



2 Herringbone Parquet Project White- Sanded and white lacquered engineered oak 120mm width. Custom lengths.



4 Illustration of Herringbone parquet meeting Losange tile with brass trim.

Brass trim: 5mm wide.
Grout: 5mm

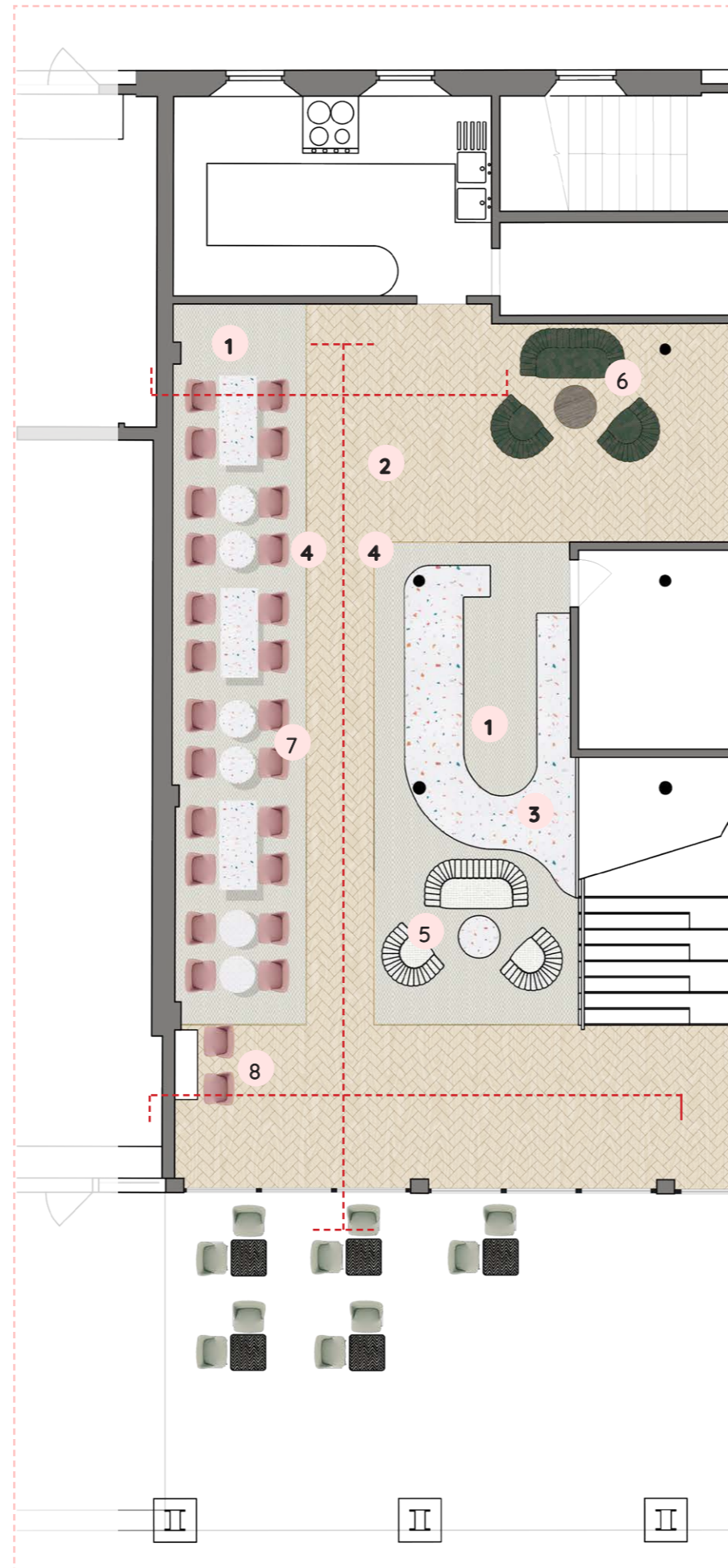


Brass profile by Profilpas Cerfix Prodecor DJ Natural Brass W: 5mm

Surfaces



3 Smile Plastics Worktop in terrazzo. Custom panel size, 20mm thick.



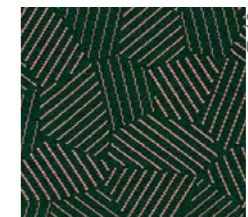
Furniture

Remnant by Note Design Studio 2020

Armchair: H730 D850 W1080mm
Sofa: H730 D850 W1830



Sancal 1643 101 Textil



Sancal RD Ranger 0966 Febrik Textil

Magnum by Estudi{H}Ac for Sancal

Stool with electroplated metal legs [311.464]: H1050 D530
Chair with upholstered base [311.41]: H760 D520 W530

