

# BRIEF



**Brief:** Referencing an allocated room in the site (Simba Housing Project) and a conceptual phrase (Space of Variation), redesign the room/site accordingly.

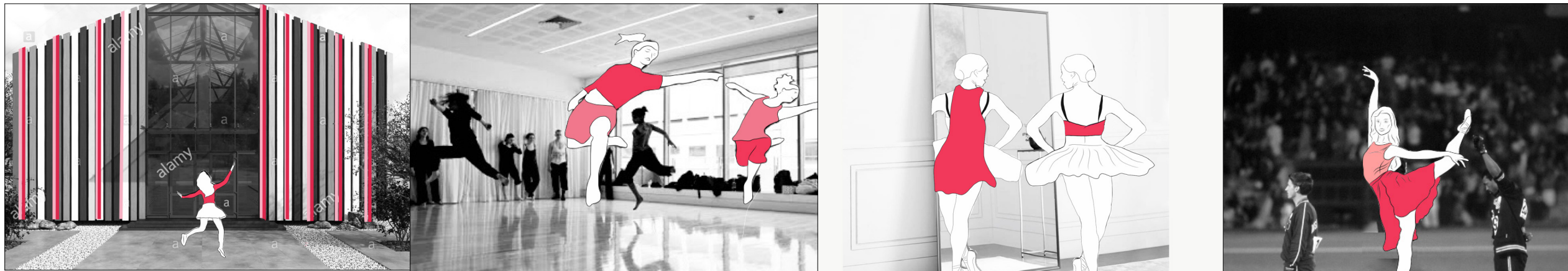
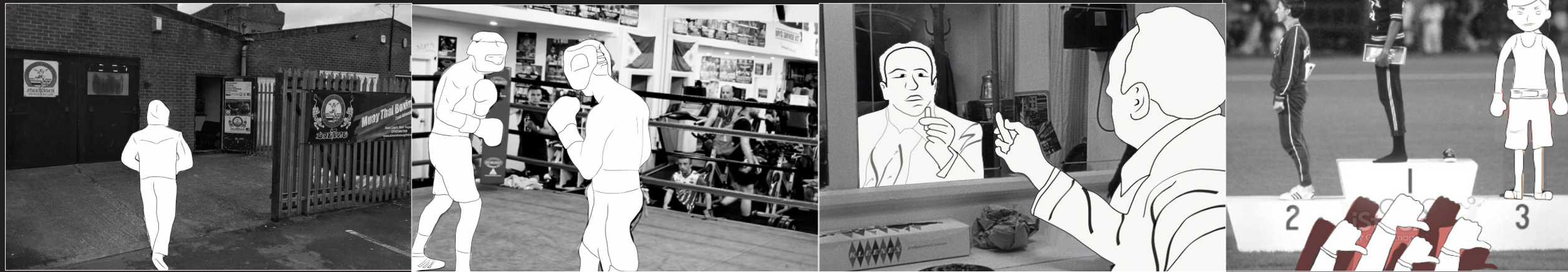
**My Proposal:** The room's purpose hinted the theme of feminism and woman empowerment (Refer to 3 images on left) which is where I began to propose a contemporary dance studio using Beatriz Columina as a reference to gender in design. Contemporary being the most gender neutral dance form.



# GRAPHIC NOVEL

A short story with contrasting themes. Graphic Novel; an exercise to understand the theme of gender in and among architectural elements ie. entrances, floor/space, mirrors/walls, steps.

Toxic masculine story line.  
Highlighting the negative and darkness of the stereotype.

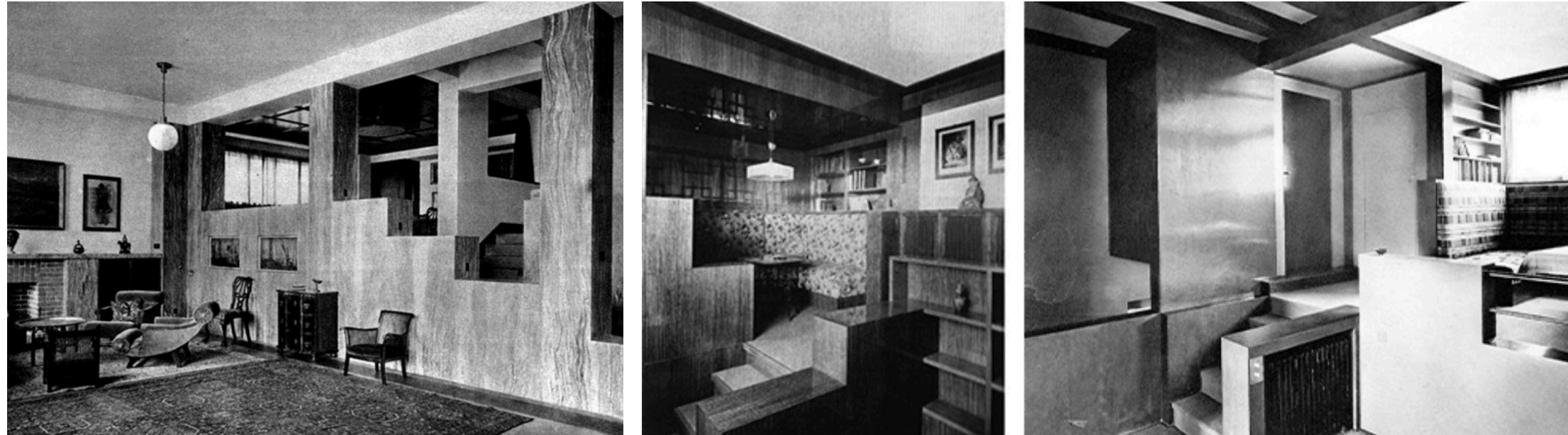


More feminine story line approach.  
The sequel introduces dance and woman empowerment for the project to follow.

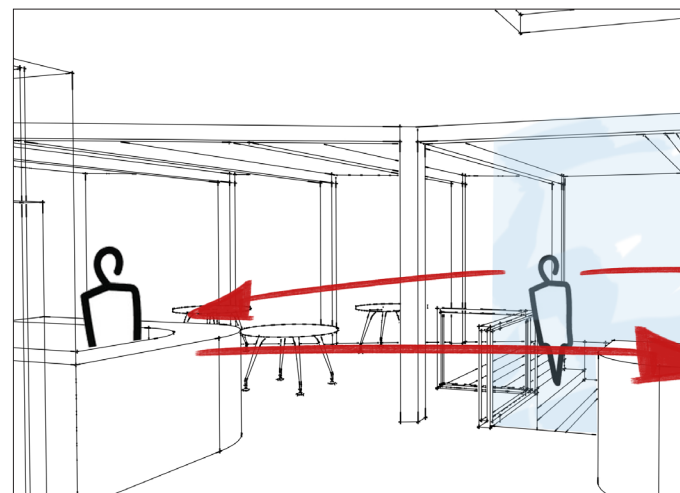


# GENDER PRECEDANT

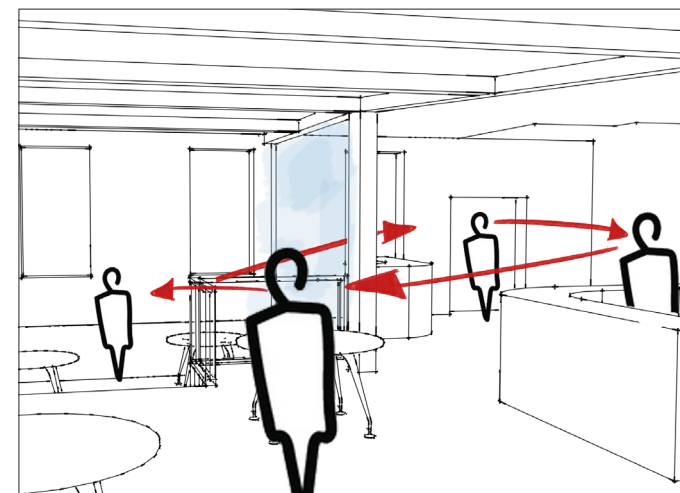
## The Split Wall: Domestic Voyeurism



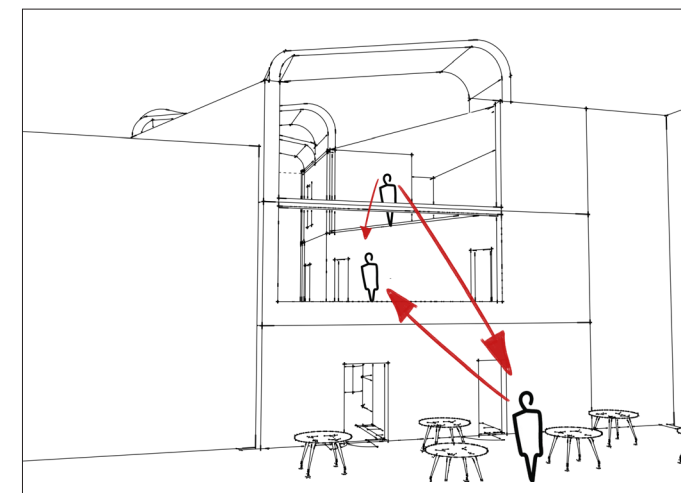
'The female space in these examples is raised above, at the end of the spacial sequence, overlooking the social space and thereby forming the threshold to the private and secret rooms above where sexuality is hidden away.'  
(Columina, B. 1992)



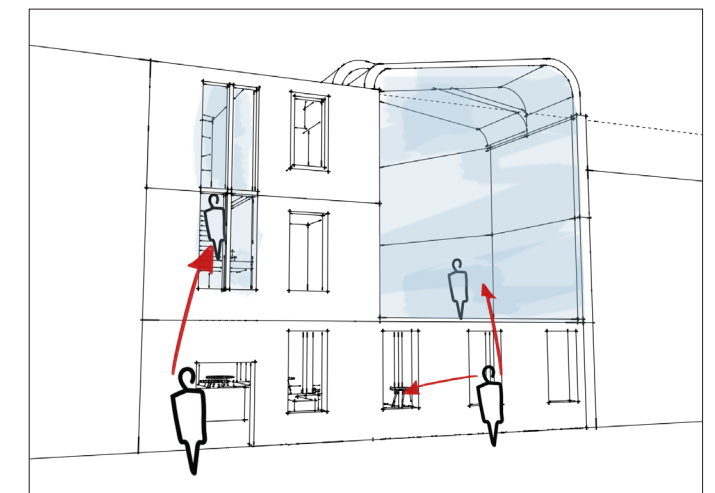
entrance interior space



back entrance interior space



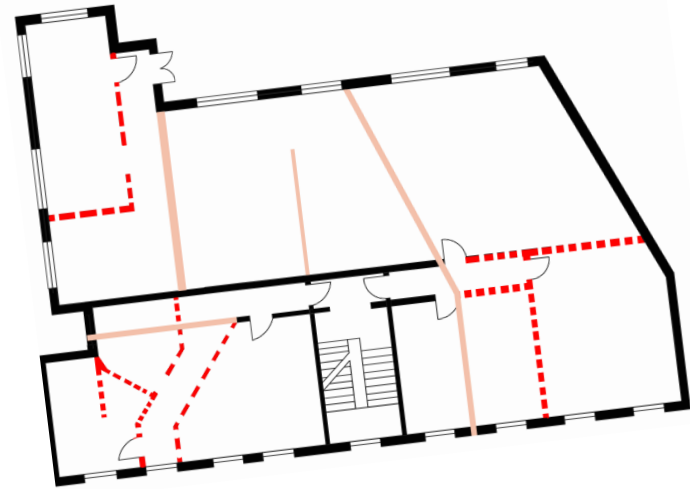
back exterior, dance studio and viewing room



street view of staircase, cafe and dance studio

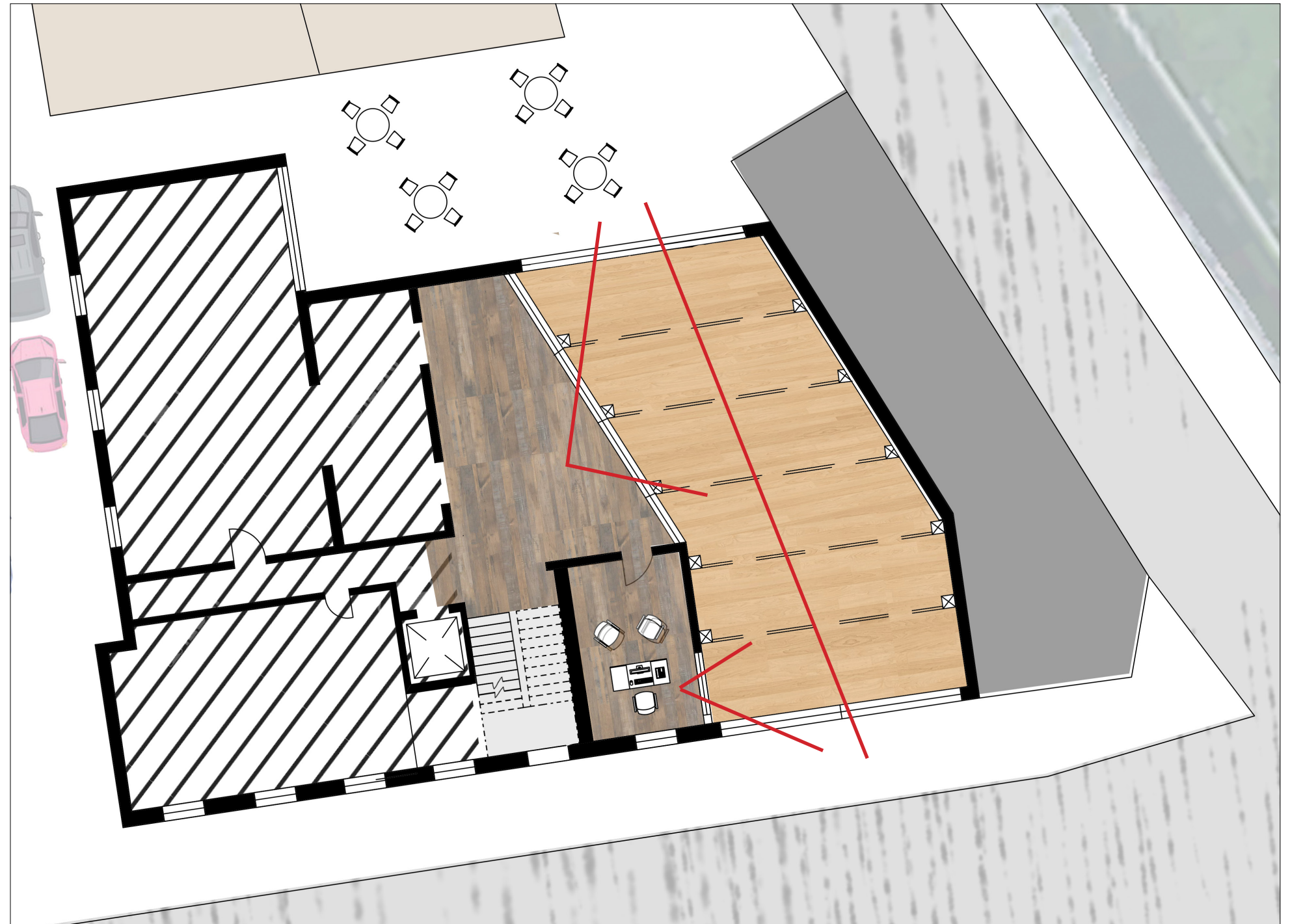
Diagram sketches showing how the proposal will be incorporating non-committal and fluid spaces throughout the design. This concept to be inspired by Beatriz Columina publication; Sexuality and Space.

# PROPOSAL



--- Removing existing walls  
— New walls

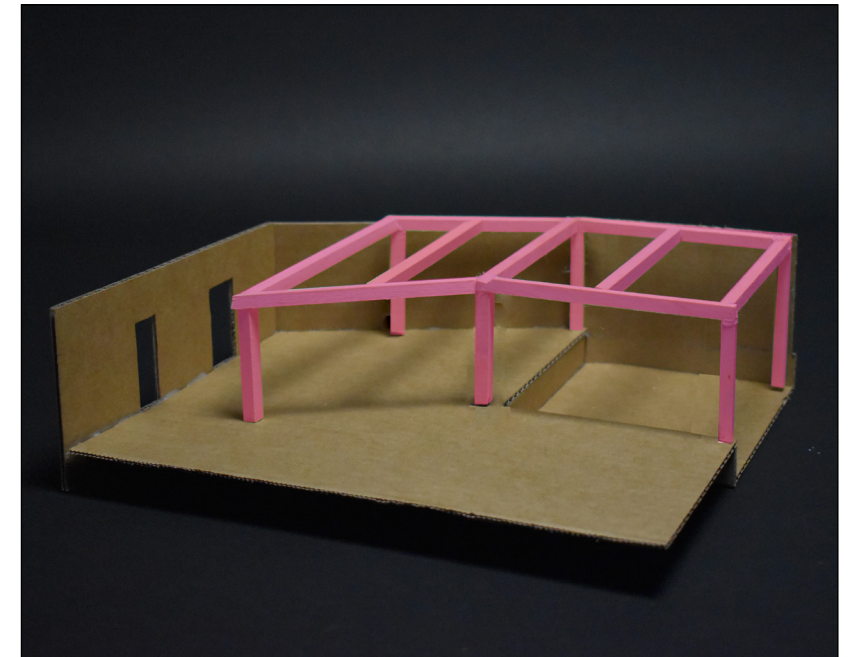
1. CHANGE ROOMS
3. STUDIO
4. STUDIO STORAGE
5. OFFICES
6. FLEXI STUDIO



Propose second floor plan of the dance studio illustrating the large curtain wall views. This creates a fluid and non-committal spaces from the exterior to the interior. The dance studio enjoyment can be experienced in most of the areas of the site.



# PROPOSAL



A concept collage and interior model of the reception and cafe area. Understanding the new structure which will support new dance floor. Pink exposed beams to represent the inner strength of a woman. The three spaces (Reception, cafe bar and seating) are all open and non-committal spaces. The views are uninterrupted in each sequence of space.