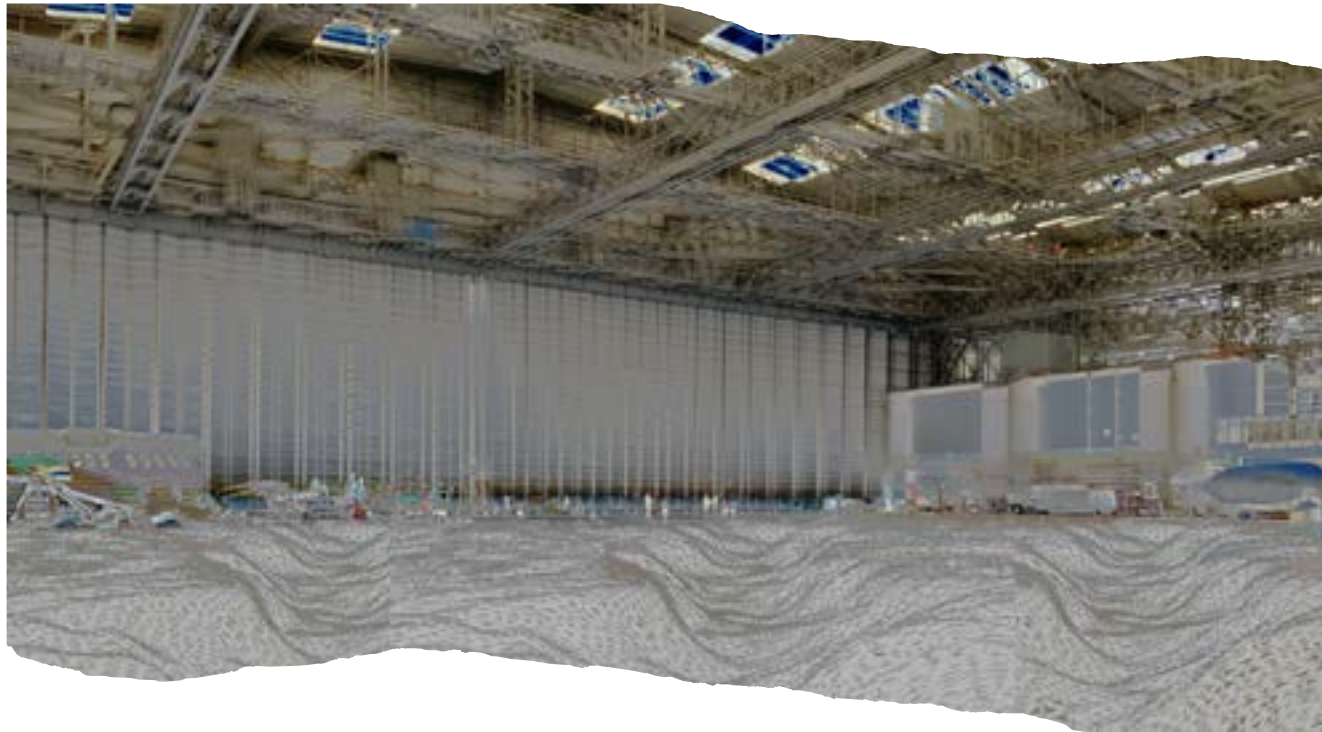
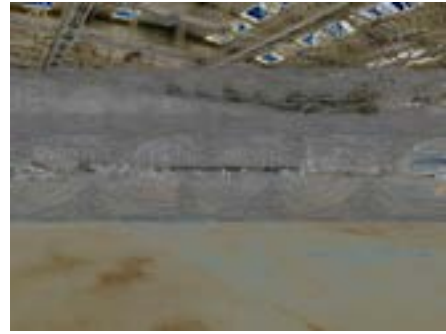
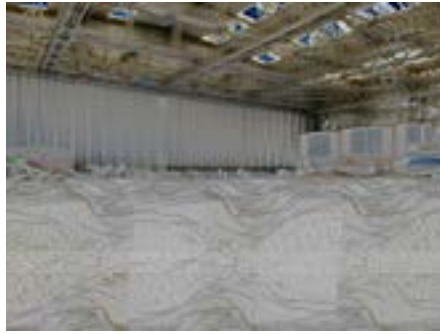


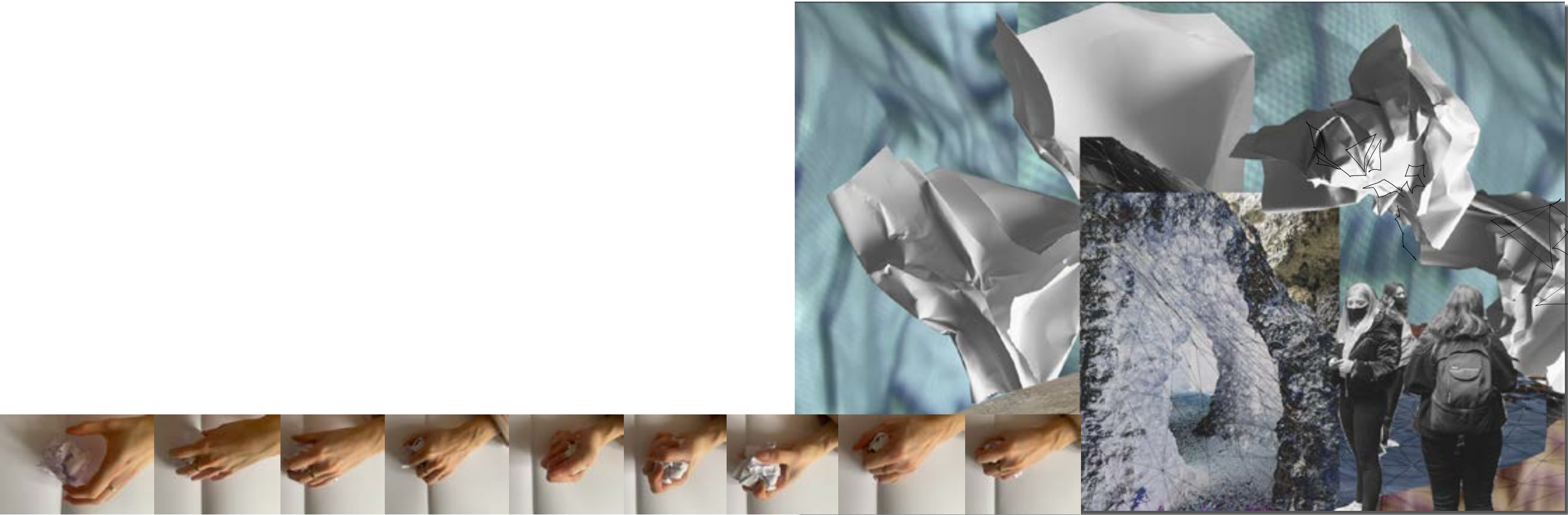
This project considers the health and wealth of the minds of creative individuals who wish to develop their journey of self-reflection through the act of painting. The aim I wish to achieve from the audience is for themselves to discover expression through painting their personalities. Using the location; Warmely Care home's (Bristol, UK): The Grotto. I crafted the space as an artist retreat, holding 6 people over the duration of 3-4 nights. Each space was to be crafted with the intent of having different purposes to each room, because of how the architecture was designed. 1. Live art room, 2. Art Gallery, 3. private painting rooms, etc.

The architectural style of my narrative is revolved around the notion of the original material that structurally crafted the Grotto. By magnifying the forms and scale of the material, I could explore the properties and characteristics of these walls. From this came my developing narrative: 'The language of the Fragment'. Using a range of craft skills, scales, materials, and processes as a way of investigating how I want the audience to feel once immersed in the space. Further developing this is shown through the exploration of the developing pages...

Manipulations of the Fragments shown in the Brabazon to demonstrate new functions behind the fragment of the old two dimensional surfaces to three dimensional spaces.



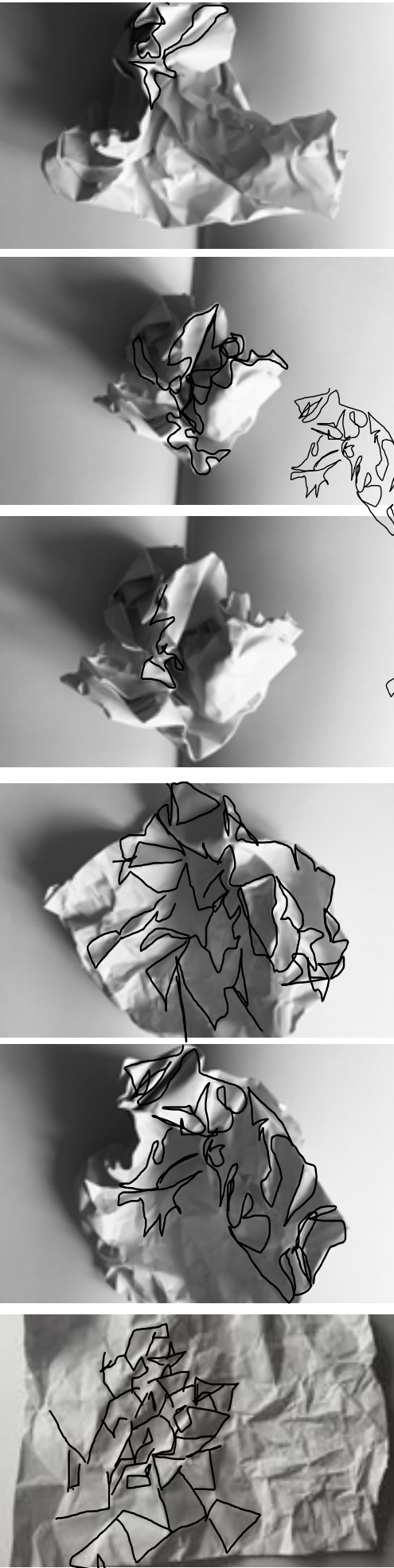
From the previous works, I found my reason for my narrative of design; the exploration into the language of a fragment. I then explored this further through my own control over the material using paper...



The act of crumpling the sleek organic shaped to created a fragmented sheet...

To unraveling the piece to see what suggestions have been made through its language of its new form...



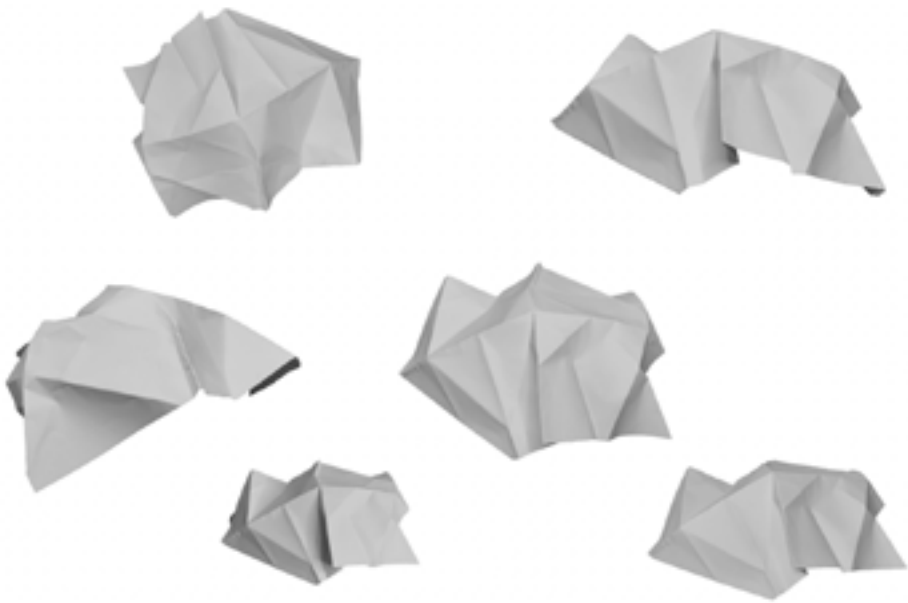


THE EXPANDED DRAWING PART 2.3

Through the journey of unraveling the fragments I have found simple linear gestures to be prominent it is language. From this I have taken a decision to keep unraveling the forms to simplistic bold markings.

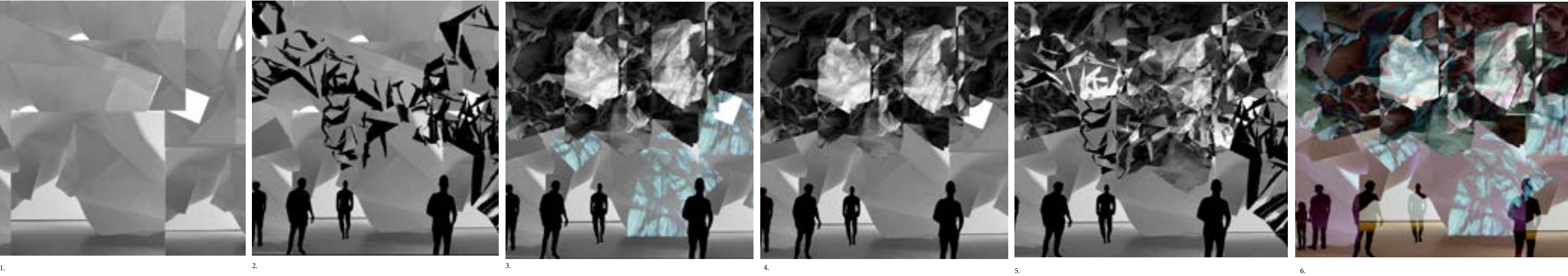
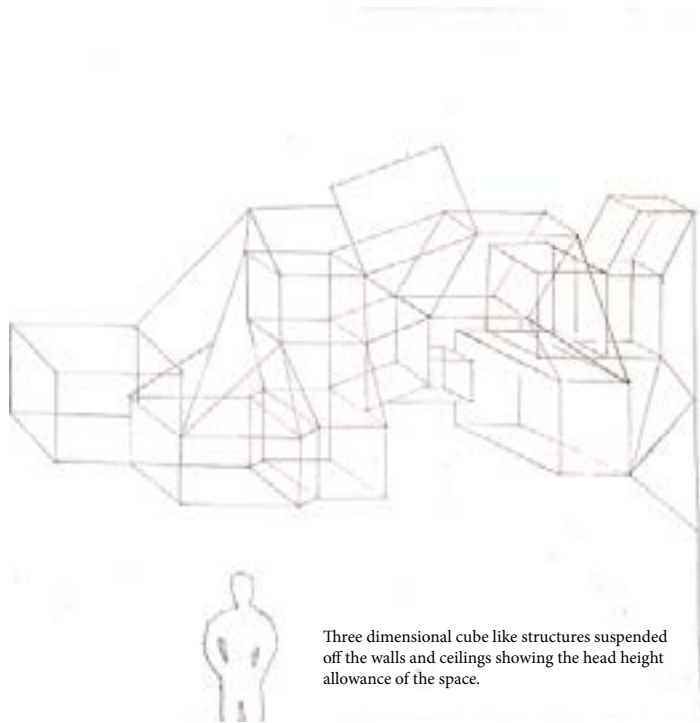
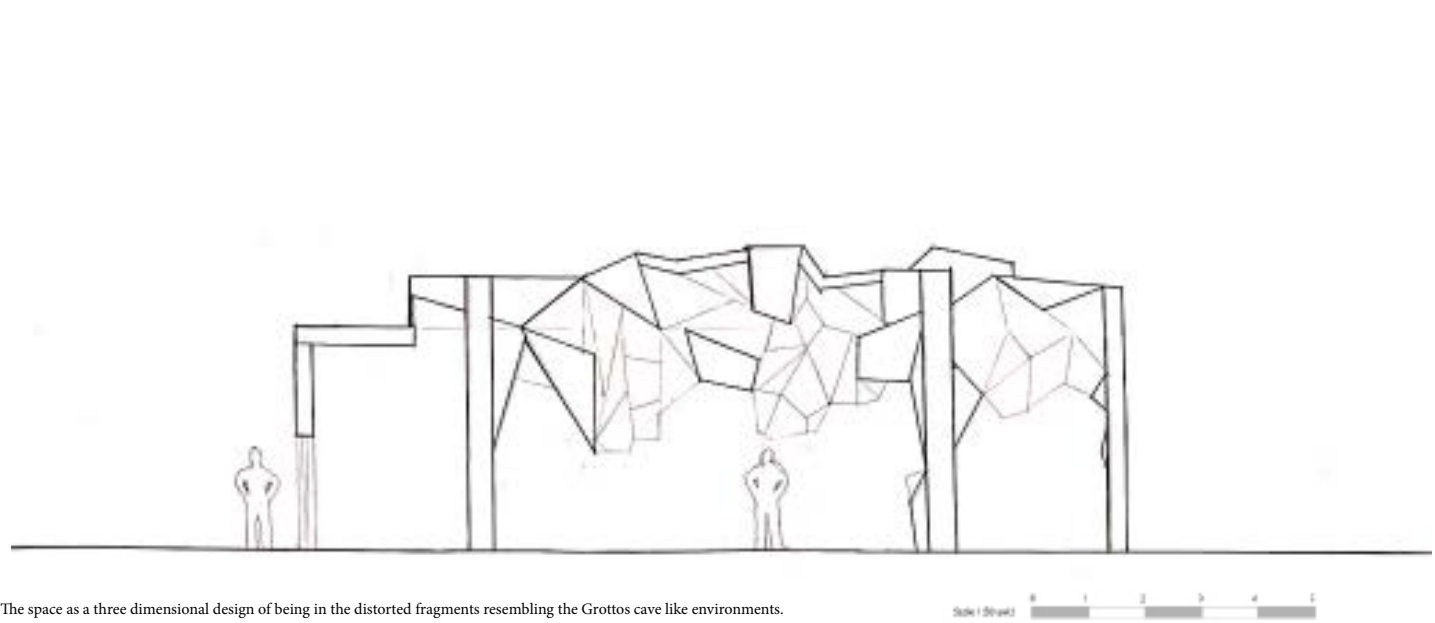


This began the journey of experimenting the Language of the design within architectural structures



Models shown at different angles to demonstrate the fragmented parts of the building from different perspectives

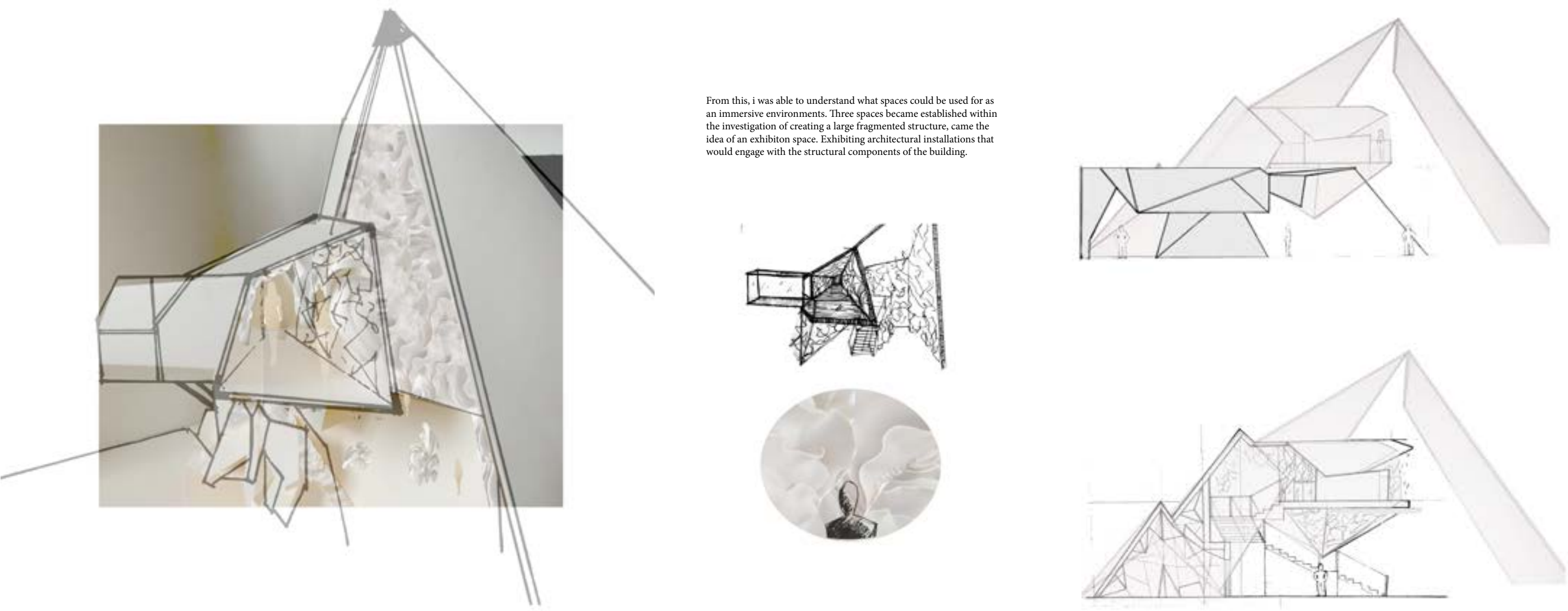
THE EXPANDED DRAWING PART 2.8



Interior digital manipulations showing the fragmented structure interior within the original simplistic structure case. I have began to explore rigid sculptural installations and fabric ruffle 'clouds' with lighting inspired by my animated drawing from the beginning of the portfolio. The movement striving the narrative of the 'Language of the fragment' from change in form and scale, is also, making the structure an immersive and interactive experience for its users.



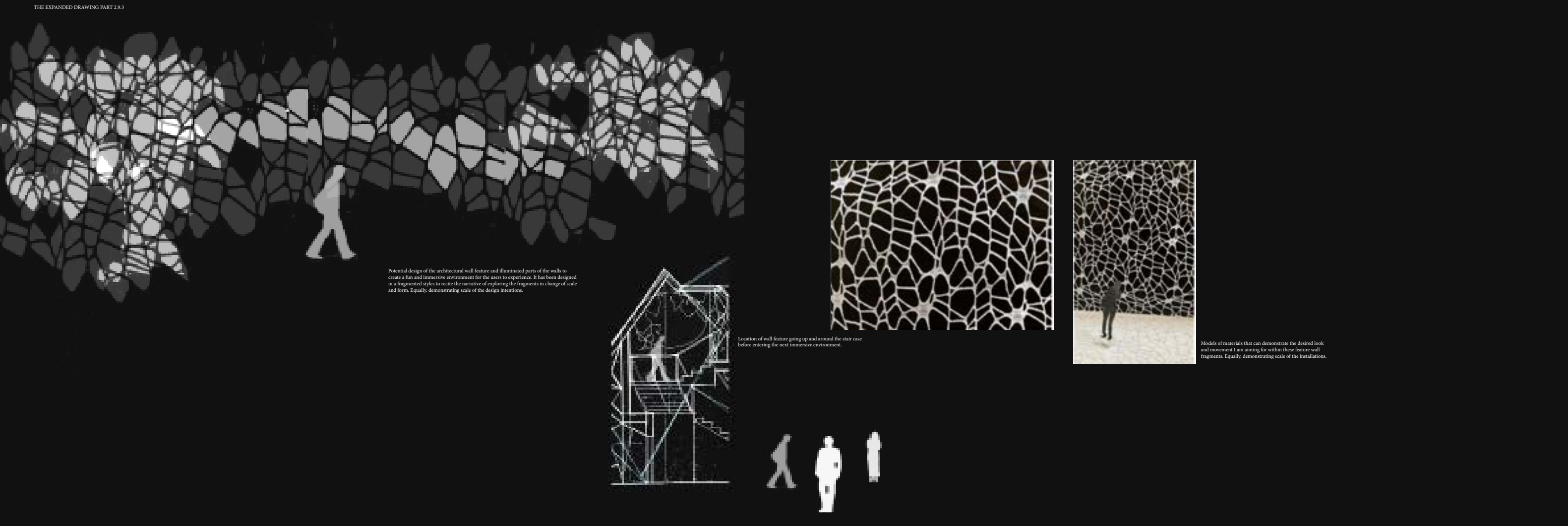
Expanding to the section of “expanded drawing part 2”, I have completed my exploration into linear fragmented shapes within the design of modeling a structure. Through actively folding an A2 sheet of paper, I was able to create unusual shapes and forms of three demensional structures. These forms would varey in sizes.



From this, i was able to understand what spaces could be used for as an immersive environments. Three spaces became established within the investigation of creating a large fragmented structure, came the idea of an exhibition space. Exhibiting architectural installations that would engage with the structural components of the building.



Conceptual model representing different interior spaces and how the exterior structure has been assembled through expansion and distorting scale and form.



Potential design of the architectural wall feature and illuminated parts of the walls to create a fun and immersive environment for the users to experience. It has been designed in a fragmented style to create the narrative of exploring the fragments in change of scale and form. Equally demonstrating scale of the design intentions.

Location of wall feature going up and around the stair case before entering the next immersive environment.

Models of materials that can demonstrate the desired look and movement I am aiming for within these future wall fragments. Equally demonstrating scale of the installation.

Thank you for your time.