

SEPARATION AS CONNECTION

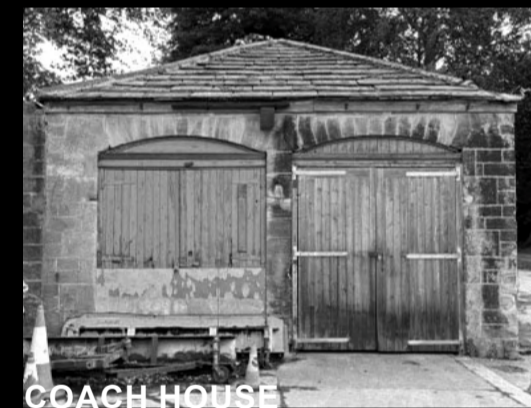
REIMAGINING MOVEMENT THROUGH HORSFORTH HALL PARK'S HISTORIC WALLS

HORSFORTH HALL PARK LEEDS, UK

Heritage Category: Listed Grade: II
List Entry Number: 1261240
Date first listed: 07-Apr-1988
List Entry Name: Stable Block to Former Horsforth Hall



STABLE BLOCK



COACH HOUSE



LEAN TOO

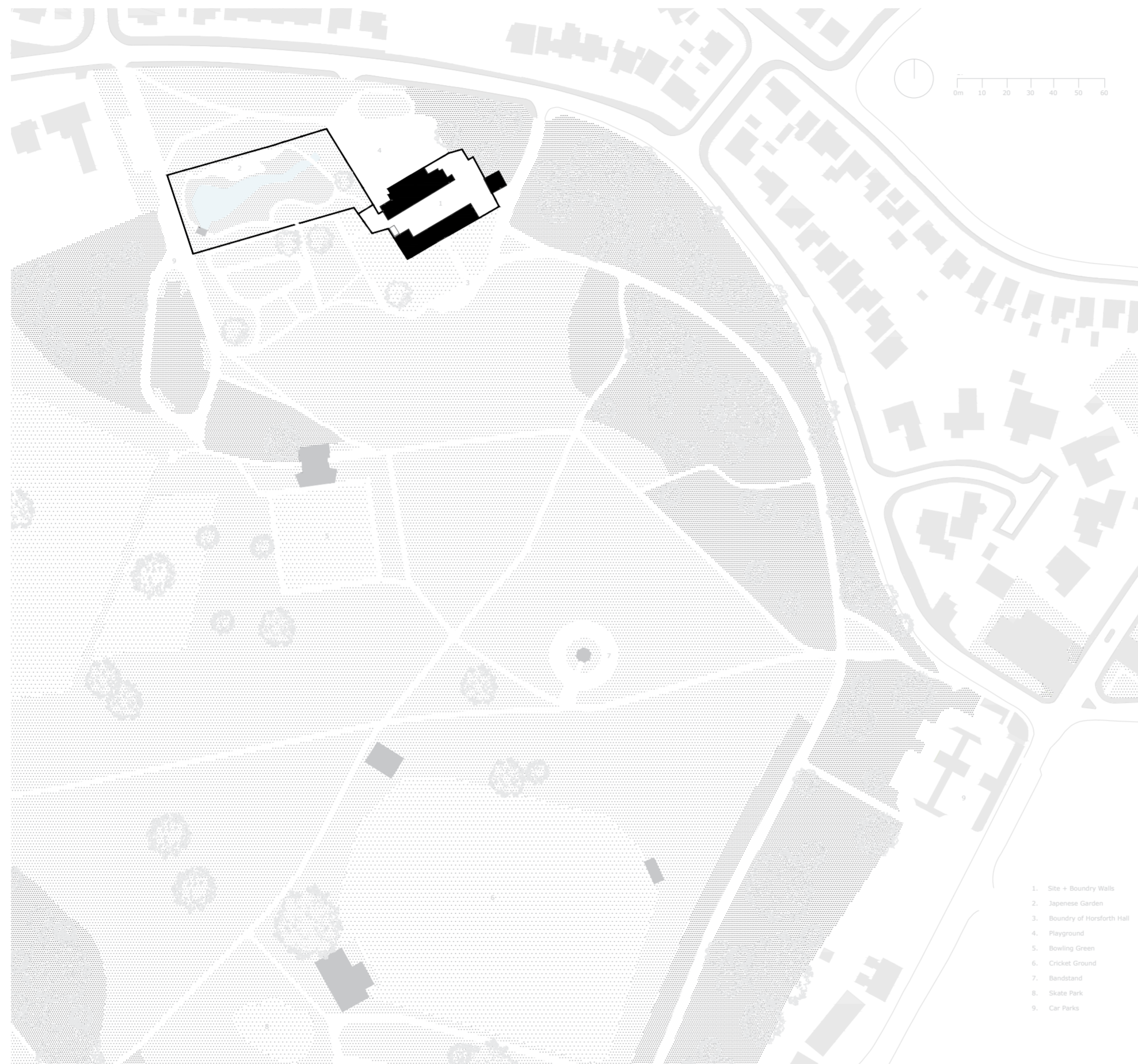


STABLE BLOCK

PROJECT SUMMARY

This project reimagines the historic outbuildings of Horsforth Hall Park as a community-focused hub through a process-led exploration of heritage, materiality, and spatial experience. Extensive archival research informed a registry that mapped original and later interventions across the site, guiding design decisions and establishing a clear distinction between historic fabric and contemporary additions. The project employed a hybrid methodology combining hand sketching, layered drawings, physical modelling, collage, riso printing, digital modelling, and critically adapted AI-generated imagery to test and communicate spatial ideas. Through these iterative processes, the proposal developed new ways of experiencing the site, creating elevated spaces within the tree canopy and strengthening connections between the park's fragmented amenities. The outcome demonstrates how innovative representational and design methods can reveal new possibilities for adaptive reuse, community engagement, and experiential interior architecture.

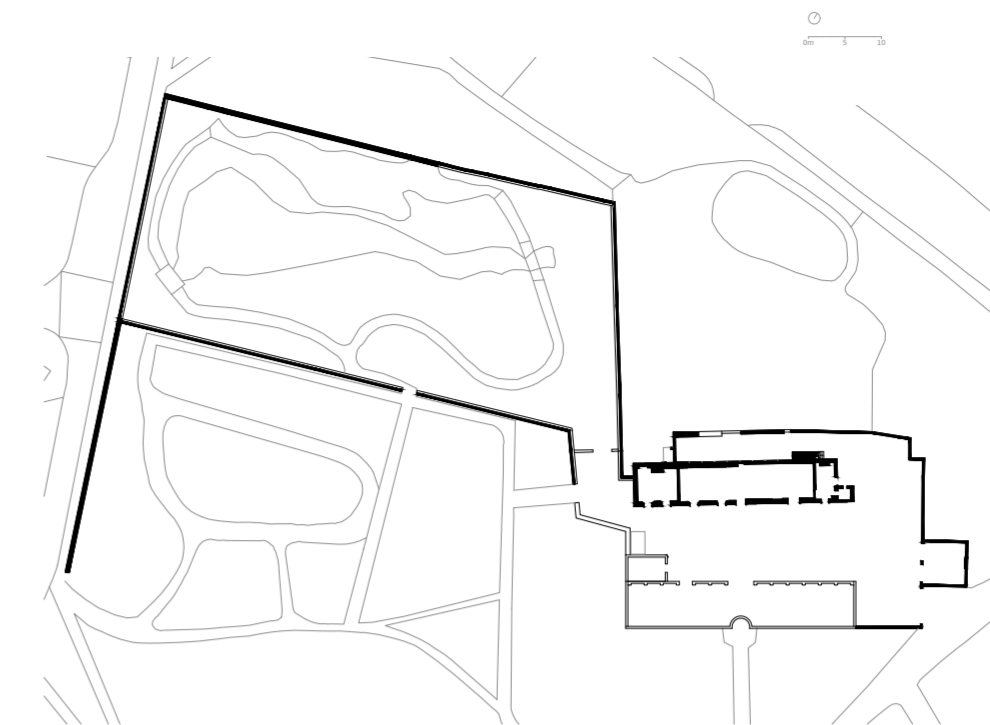
SITE MAP



BACKGROUND INFORMATION:

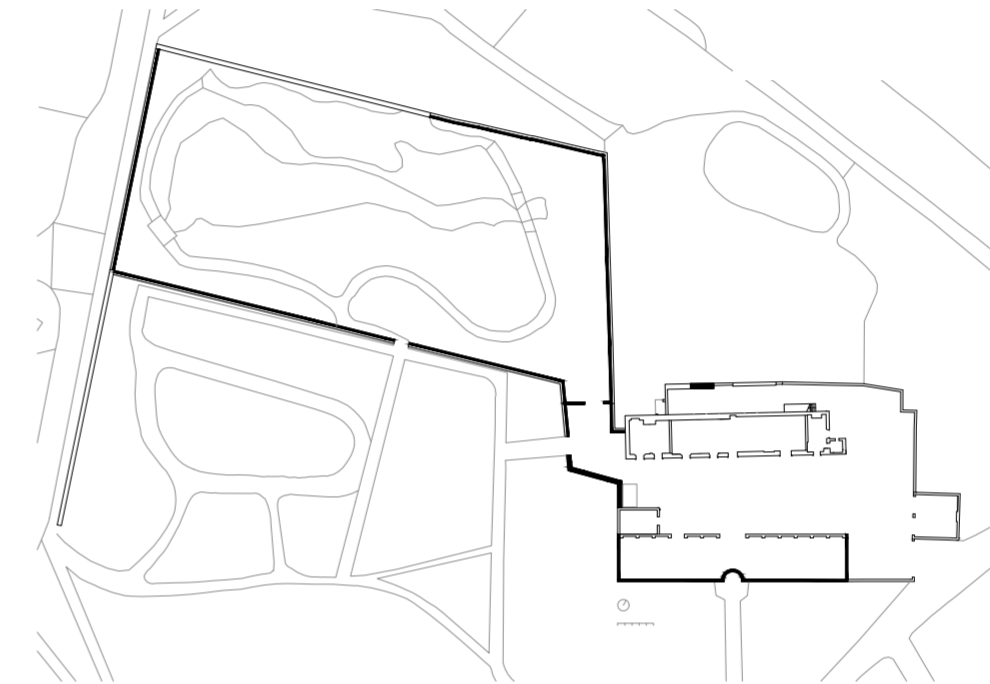
Horsforth Hall, originally known as New Hall, was built in 1707 by John Stanhope for the influential Stanhope family, who acquired part of the Manor of Horsforth following the Dissolution of the Monasteries. After the family left around 1790, the Hall was leased to several tenants, including Colonel Thomas Lloyd, owner of nearby Armley Mills. By the late 19th century, the surrounding grounds were used as a cricket ground and leased to Horsforth Hall Cricket Club. In 1930, Scottish businessman William Mathieson purchased the Hall and its estate. Although he never lived there, he and his wife gifted the property to the people of Horsforth in 1932. The Hall subsequently served a variety of community functions, including council offices, a café, a military communications centre, and the headquarters of the ARP during the Second World War. Following years of structural deterioration caused by subsidence and timber decay, the Hall was demolished in 1952. Today, the site is occupied by a garden, while the former stable block and coach house remain and continue to serve the community. The Lean Too and The Long Shed were added and remain today also.

EXISTING SITE WALLS: MATERIALITY



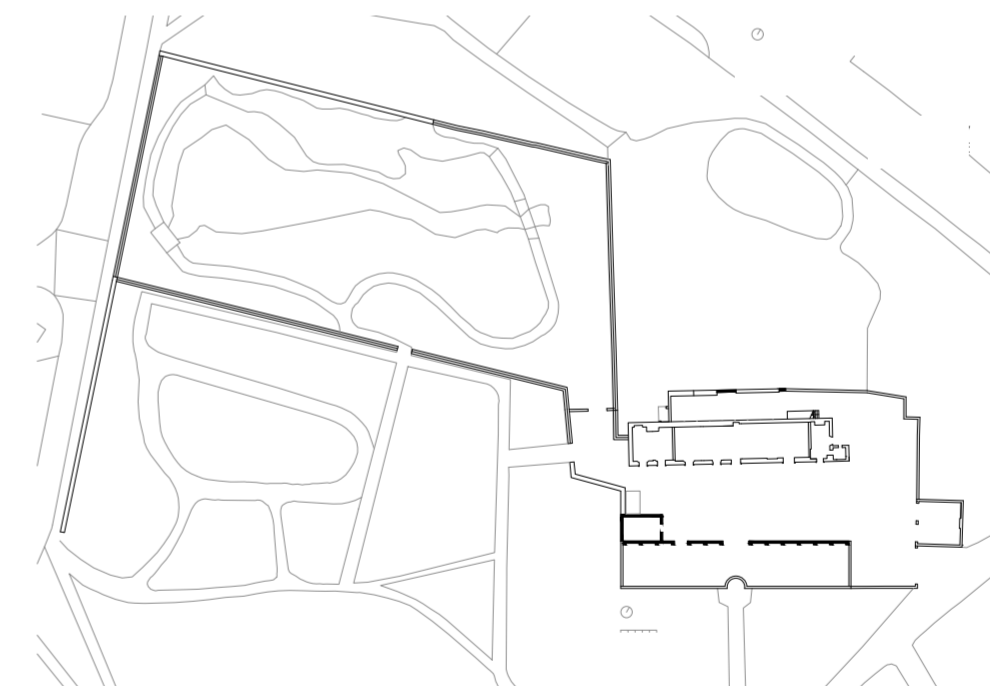
STONE

Majority of the walls on site were built using local stone from the nearby quarries of West Yorkshire. The Stable Block, Coach House and outer walls of the Japanese Garden and courtyard space were also constructed using the same local stone. The stone adds a historical element to the site and proposed design and will remain untouched throughout the project. Any additions to the site will remain disconnected from the stone to create a distinction between materials.



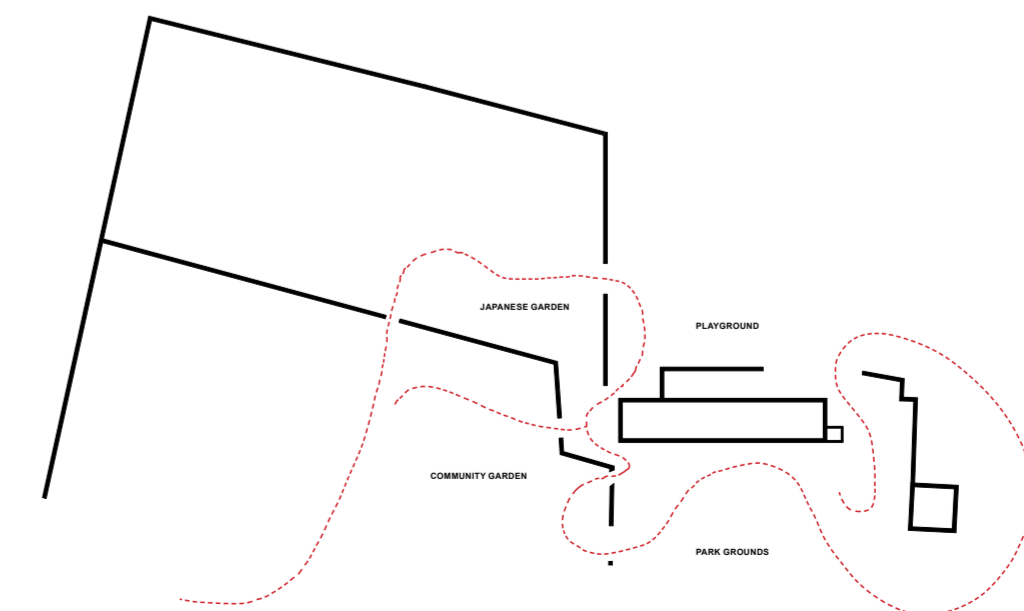
BRICK

Brick is also used on site as the internal wall of the Japanese Garden and areas of the courtyards space. The Long Shed's back wall is also built in brick, however The Long Shed itself disconnects the Stable Block, which will remain untouched, from the rest of the park. So, The Long Shed will be demolished to make way for a more connected and social Stable Block and community space.



BLOCKWORK / CONCRETE

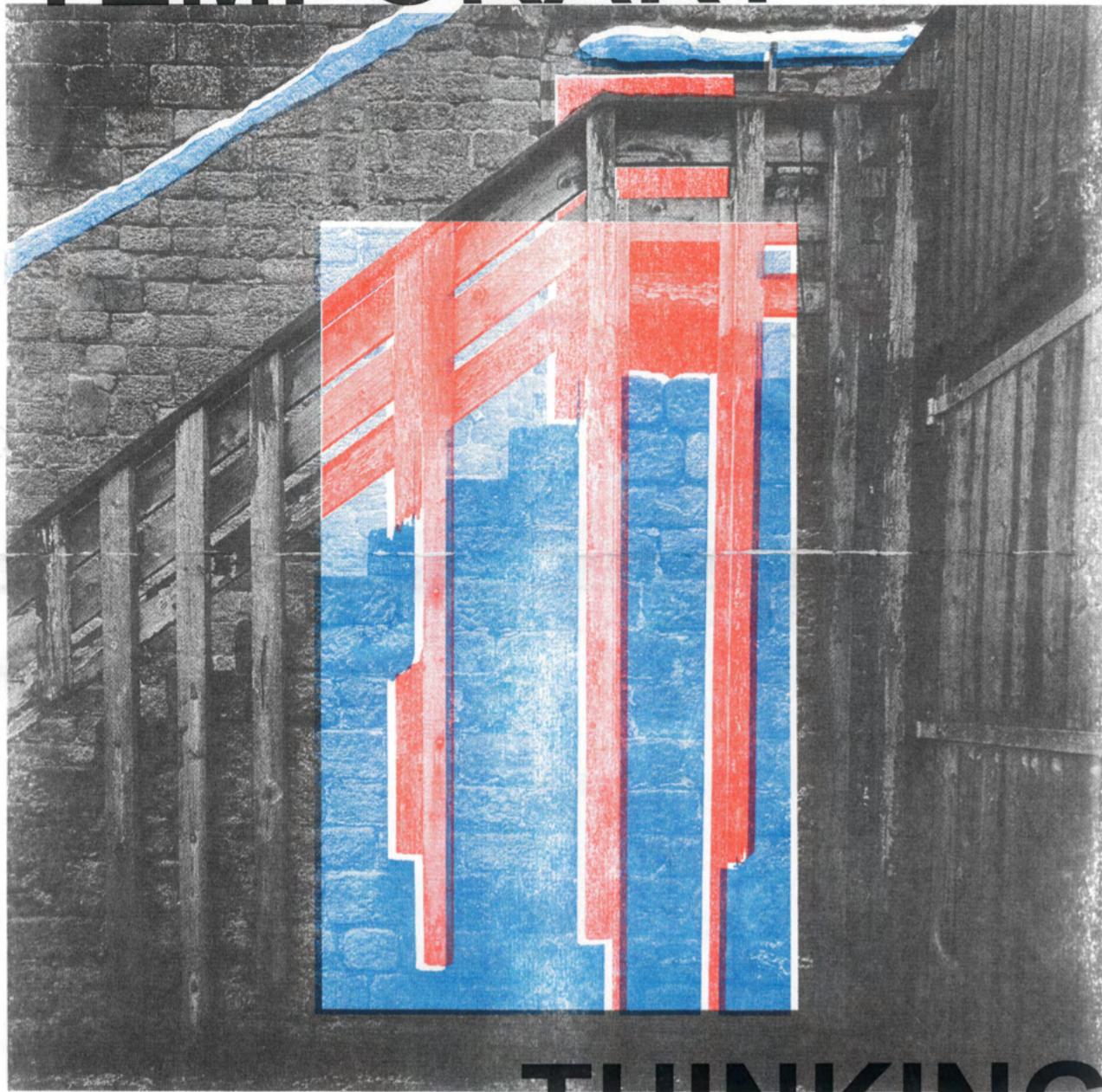
Blockwork is used in small areas of the site, mainly on the front wall of The Long Shed. It is a modern addition to the site and was constructed quickly and with a lack of care. The Long Shed also has a layer of render that feels materially disconnected from the rest of the site. The decision has been made to remove The Long Shed and the difference in material quality further supports the argument to do so.



REMAINING WALLS + OPENINGS

The stone and brick walls will remain on site, blockwork and concrete will be removed. This will create a connected and well circulated space in the park. By adding some simple but precise openings to the existing stone and brick walls, there can be direct access to different areas of the site which improves efficiency and functionality of the space.

TEMPORARY

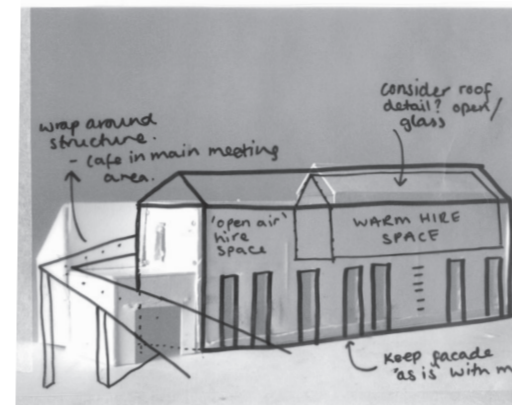
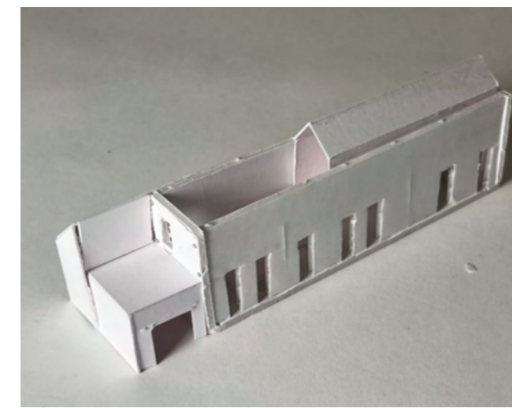


THINKING

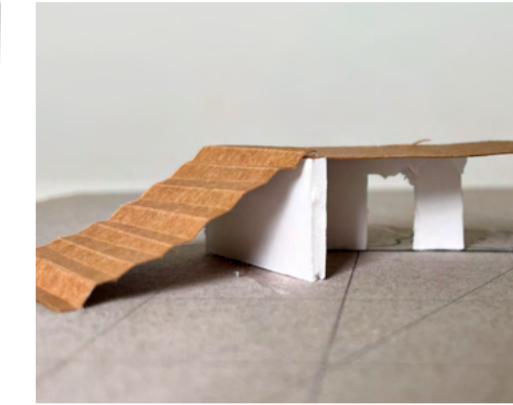
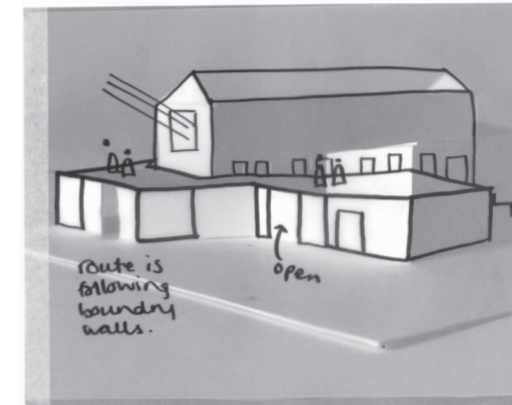
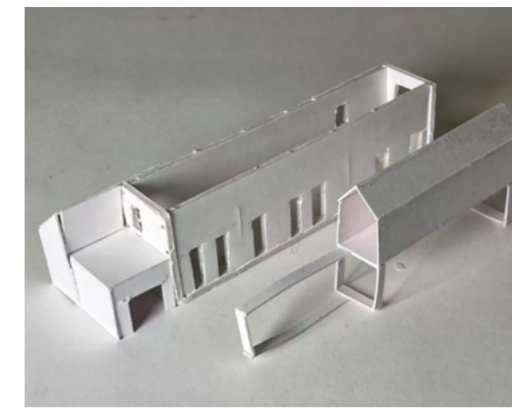
Using Riso Printing as a form of design development. This further deepened my interest in the separation between the historic existing and the new additions.



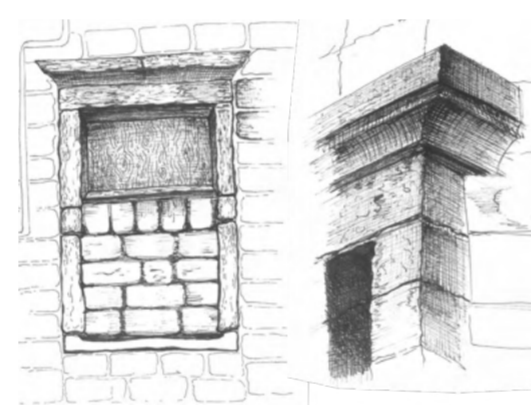
Trialing forms using plaster casting solidified my interest in the historic stone and wanting to preserve it. This aided the decision making in materials and form for the new elements.



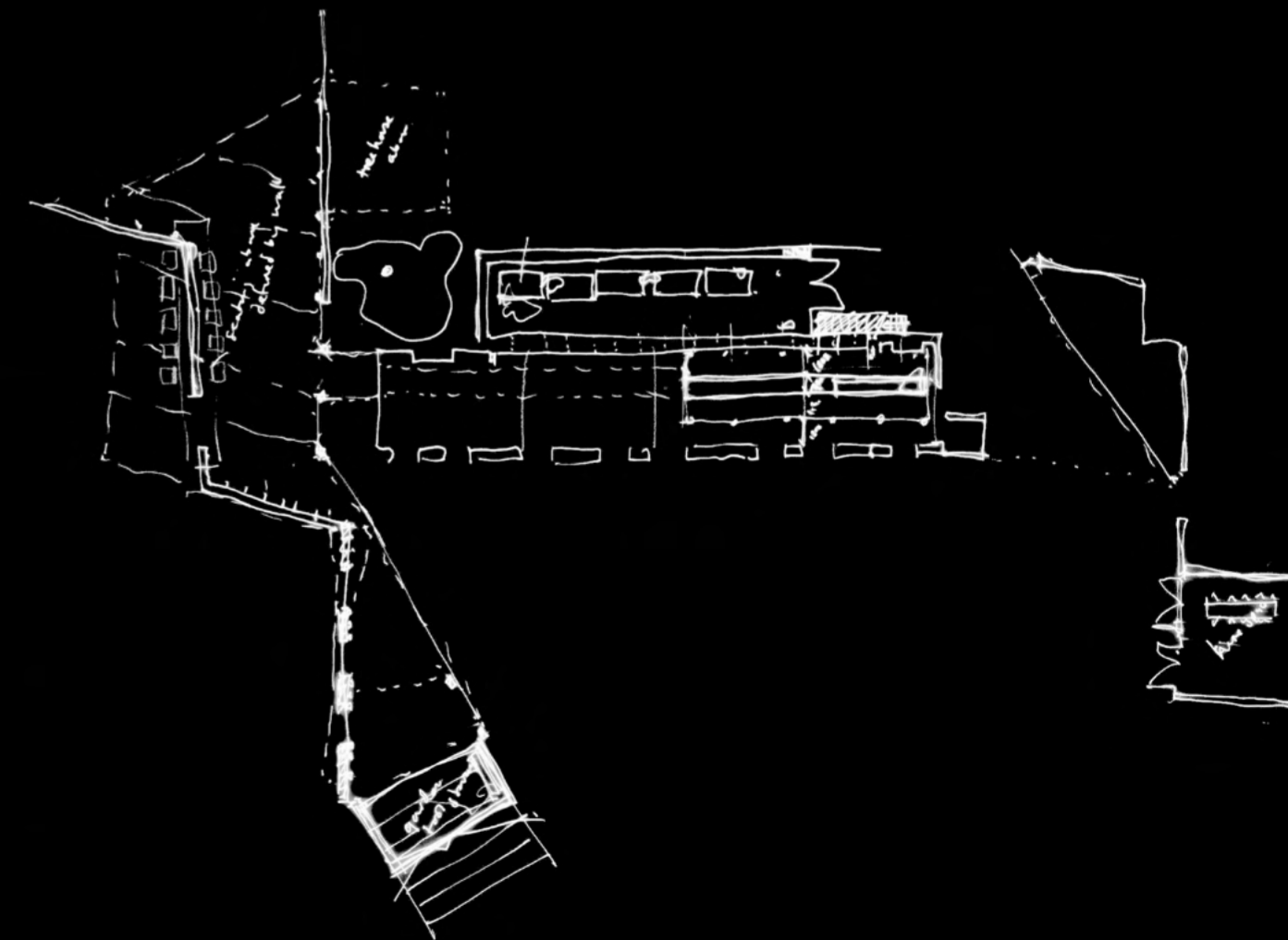
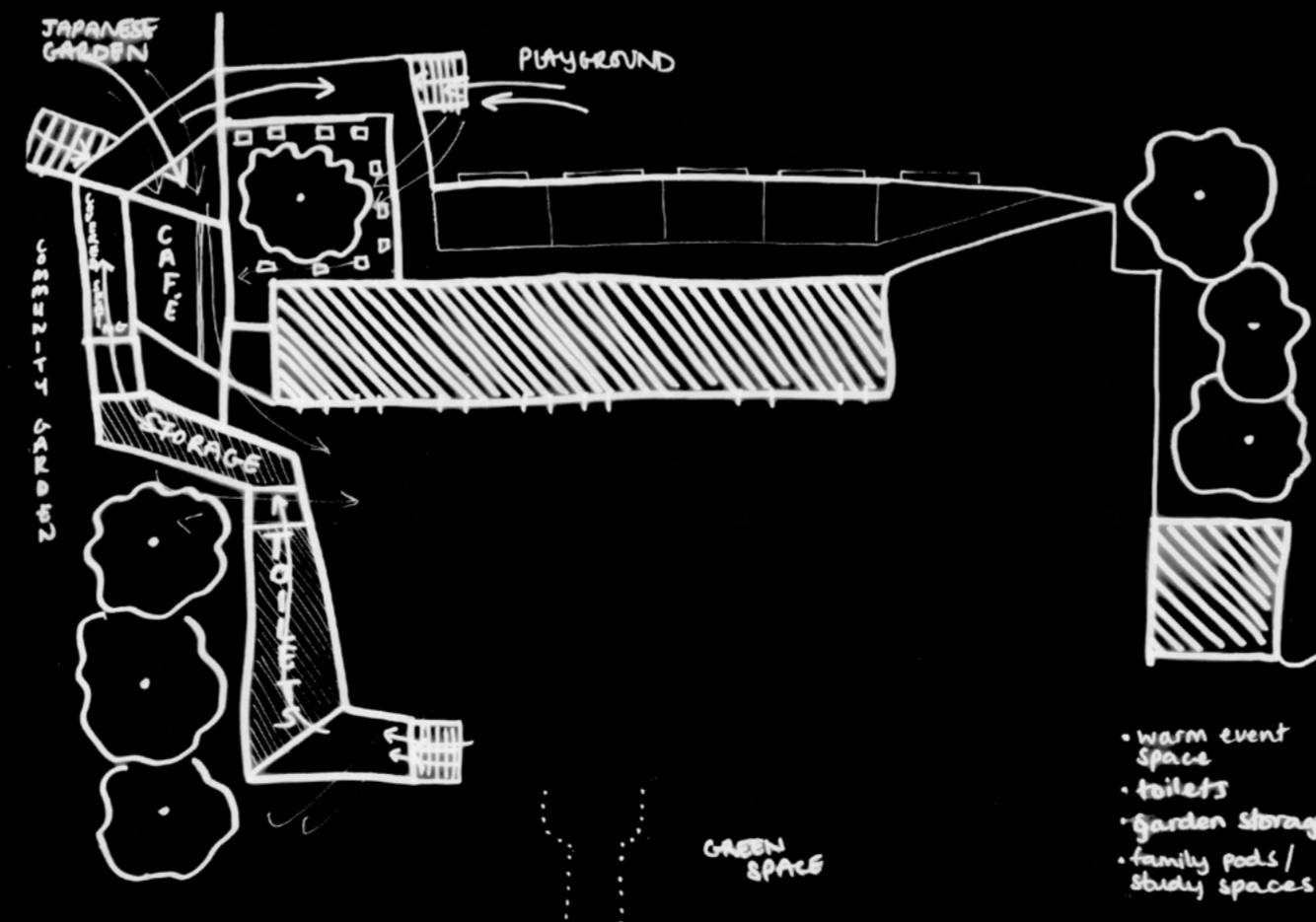
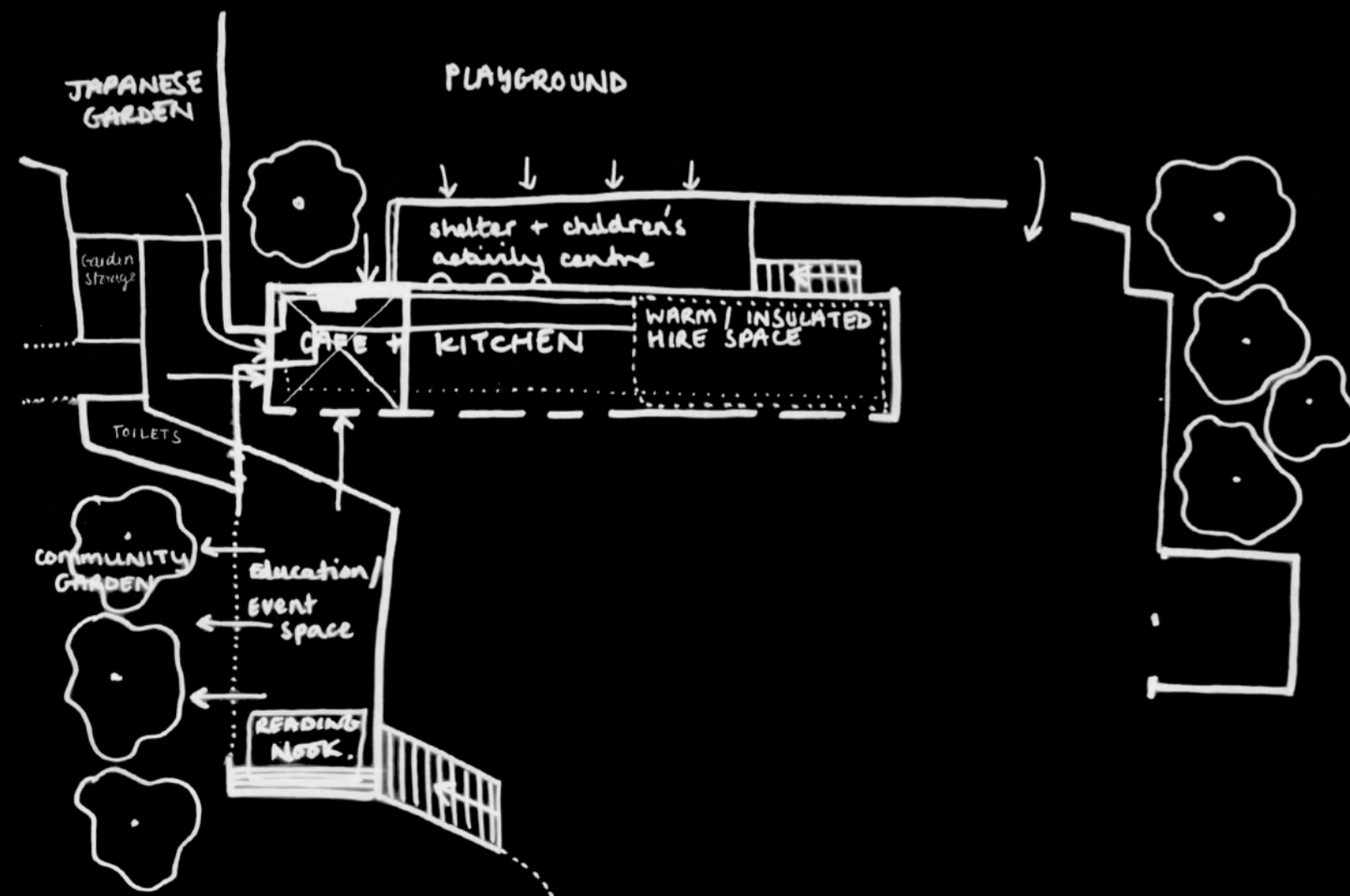
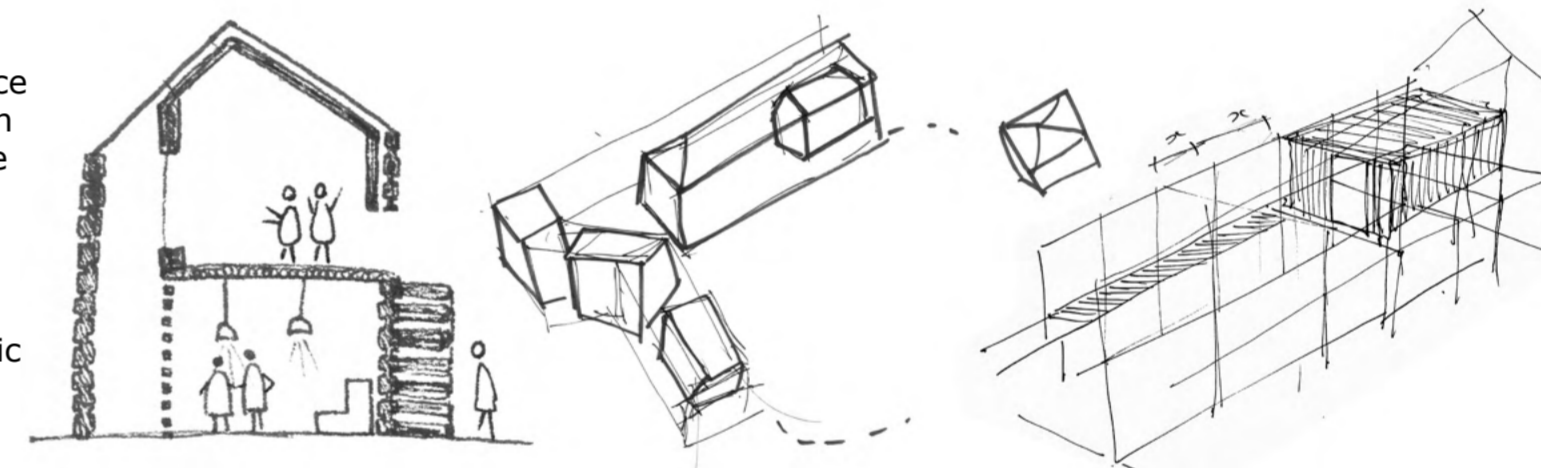
Using a simple sketch model helped to understand the form and spatial relationship between the existing stone stable block and a proposed internal pod. Additional sketching over the images further deepened the understanding of the circulation, viewpoints, lighting and volume of space.



Modelling the idea for the wrap around structure that sits above the boundary walls helped to understand the viewpoints, circulation and openings. However, the main benefit of this model was understanding and visualising the spaces that this new structure creates below.



The idea for the internal pod is to create a fully insulated, hireable space for the community. It would sit within a new steel frame system. The frame would also allow for adaptation and new spaces or walkways to easily be added to the gridded system. This means the Stone will remain untouched, allowing the historic fabric to hold its value. If necessary it can also be dismantled.

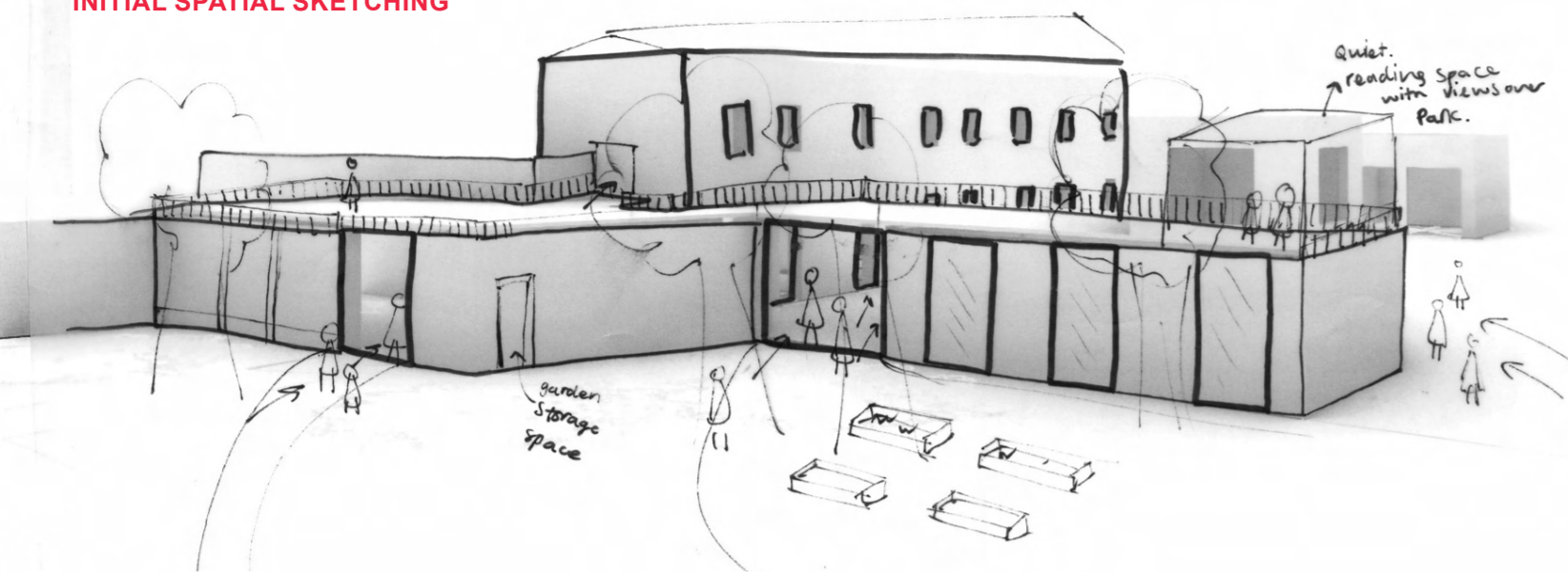


The initial design looked at how the new space under the wrap-around structure can be divided. The form of the platform was yet to be established, the existing trees, boundary walls and viewpoints needed to be considered more.

By incorporating the trees that surround the boundary walls, an organic form was created. However, there was currently not enough covered spaces for shelter or insulated spaces for hire.

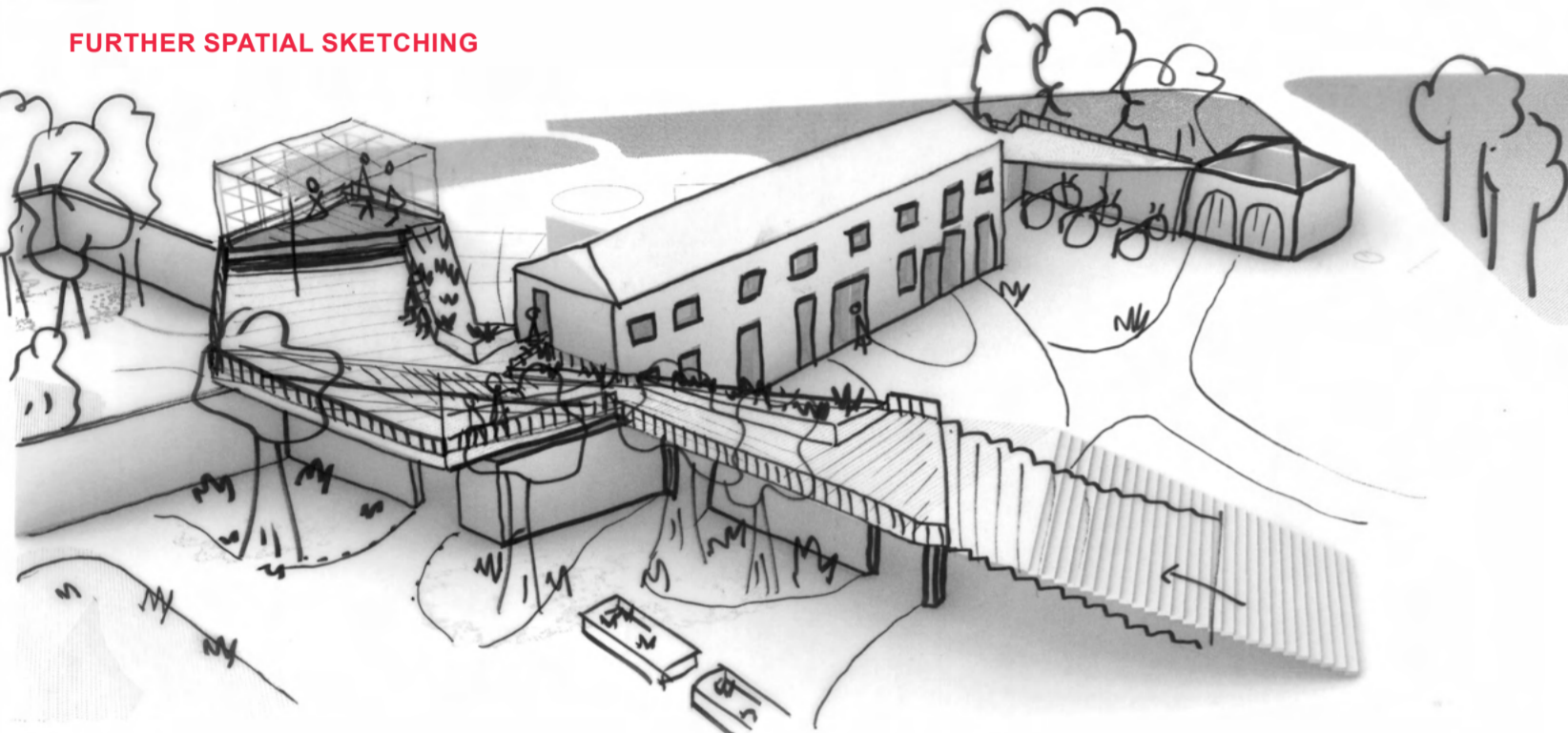
This iteration considered shelter, connectivity and functionality of the site. The large angled staircase also invites the public to explore the new raised walkway. The spaces feel appropriate for their location in relation to the gardens and playground.

INITIAL SPATIAL SKETCHING



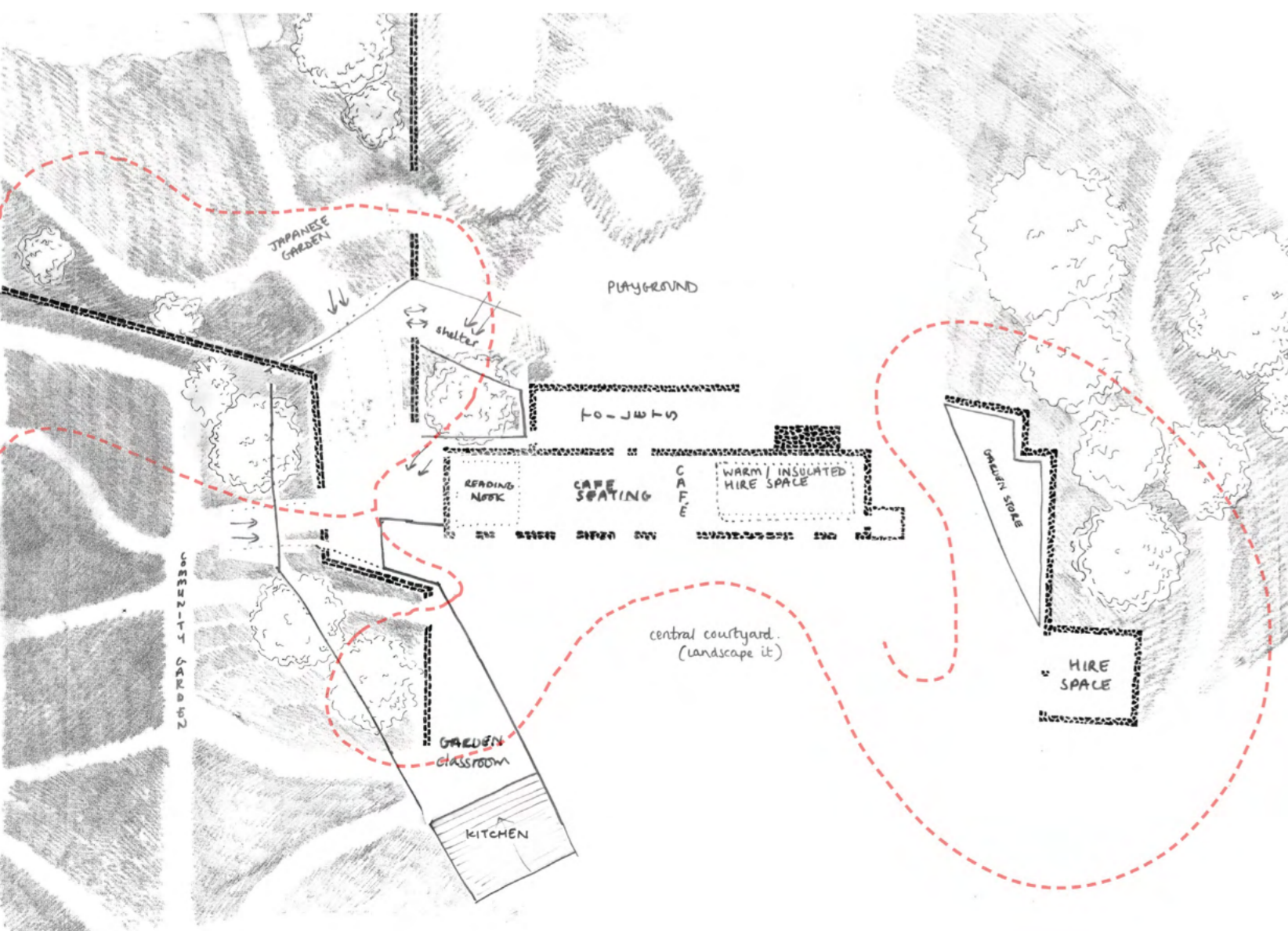
By sketching over 3D digital models, it helped to understand the spatial relationships between the spaces and what would benefit the spaces. As a basis, the form worked however it needed more level change and interest to create different environments within the walkway.

FURTHER SPATIAL SKETCHING



Experimenting with raised decking, planters and staircase angularity helped to strengthen the concept of the raised platform. It now not only provided amazing views of the park within the canopy level, but also allows people to perform different tasks and activities that were not available on site before.

COLLAGE TO CREATE FINAL ITERATION OF SITE PLAN



AI-GENERATED IMAGERY FOR VISUAL TESTING



Using AI to generate images as a experimentation tool meant that the proposed design could be visualised and adapted efficiently, correcting any flaws in the proposal.

AI-GENERATED IMAGERY FOR MATERIAL AND SPATIAL TESTING



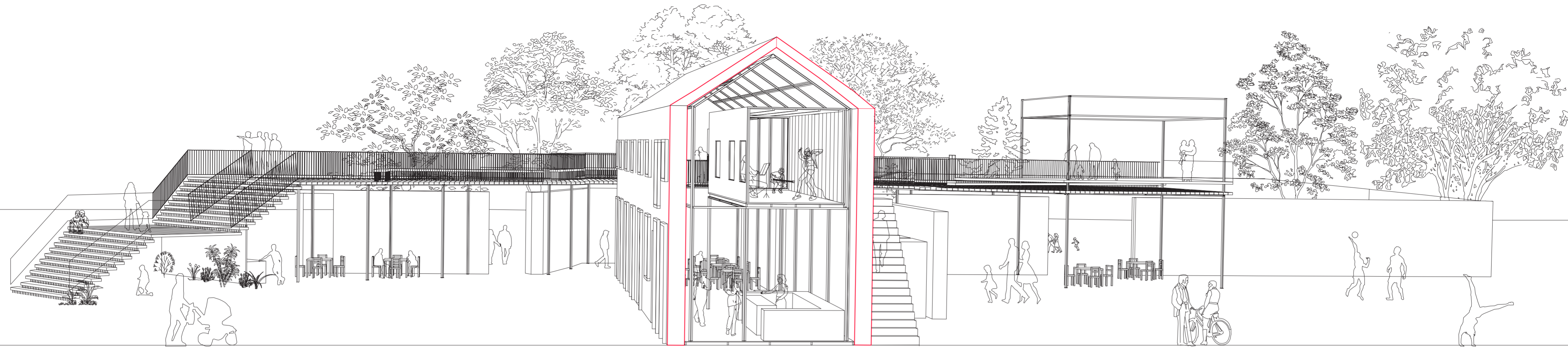
By inputting views from the 3D digital model of the proposed design, AI created different variations of the space. Materiality, lighting, function and representation styles could be easily tested and edited. This helped to understand the overall scheme of the project and how the chosen forms and materiality would look and feel in reality.

SELF-ADAPTED RENDER

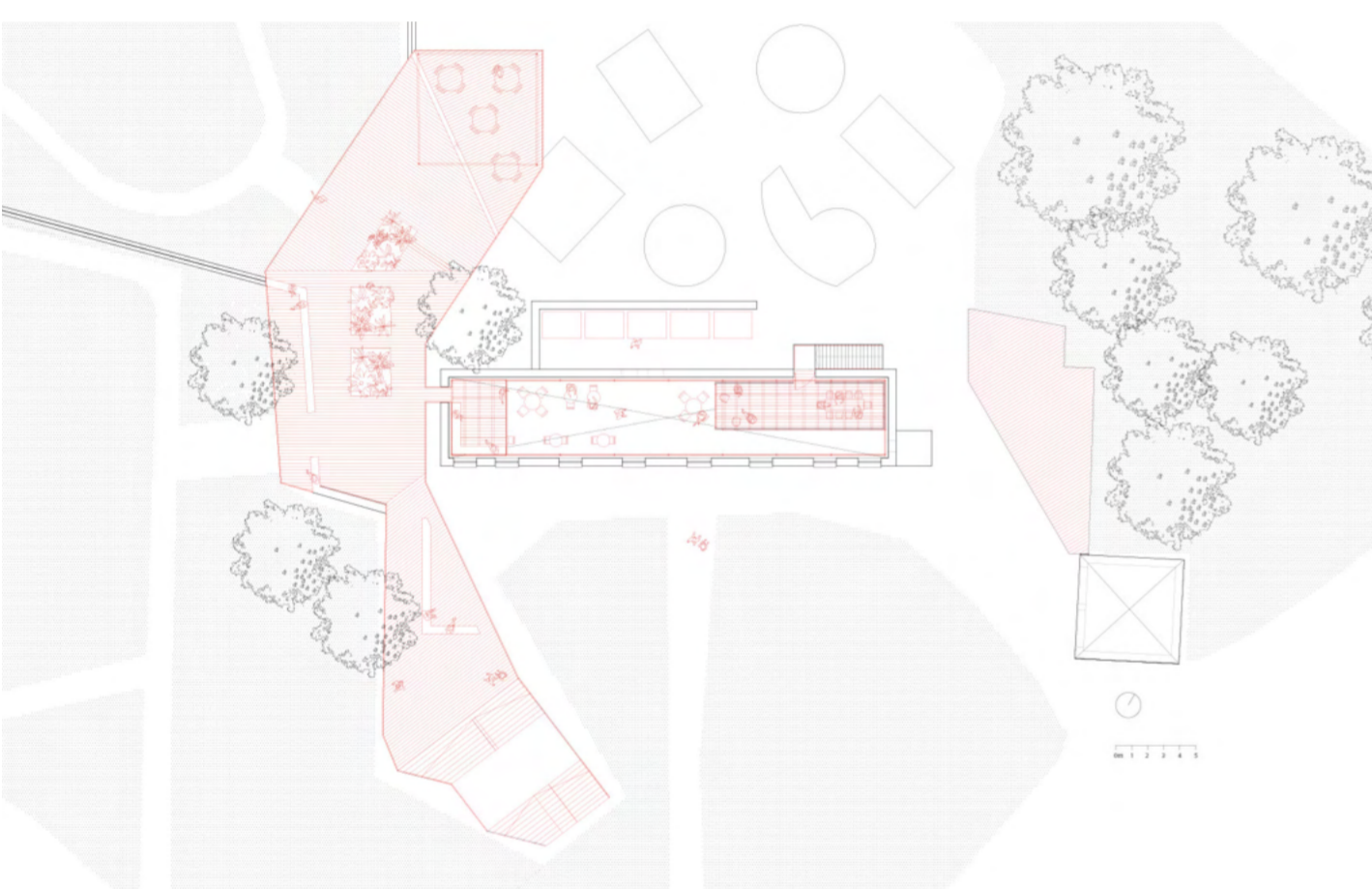


By editing the AI-generated images in photoshop it created a successful render of the proposed design. Adding textures, context, people and editing the image itself created a representation style that was preferred. Overall the use of AI as a tool to experiment and critically evaluate the proposal was a successful way of working on this project.

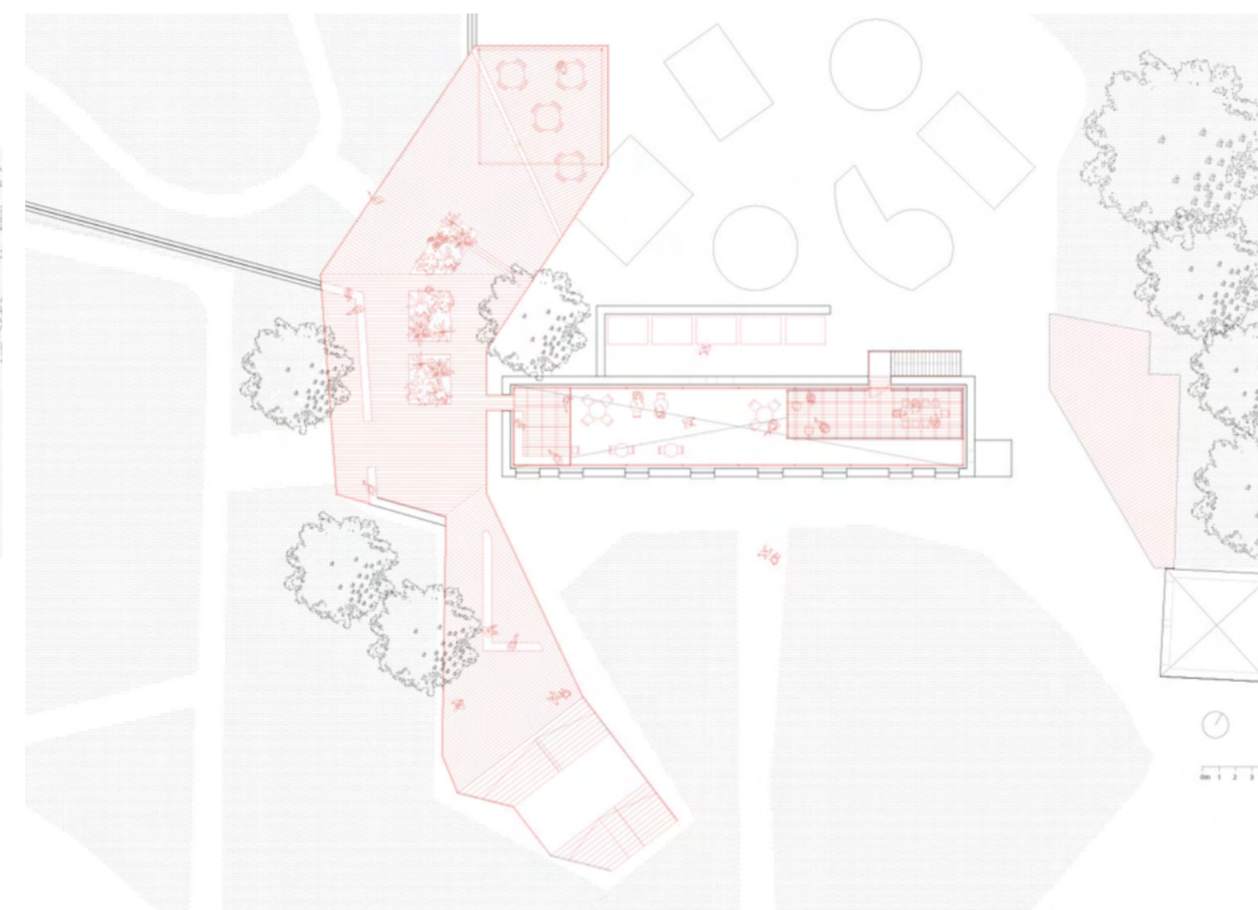
PROPOSED PERSPECTIVE SECTION



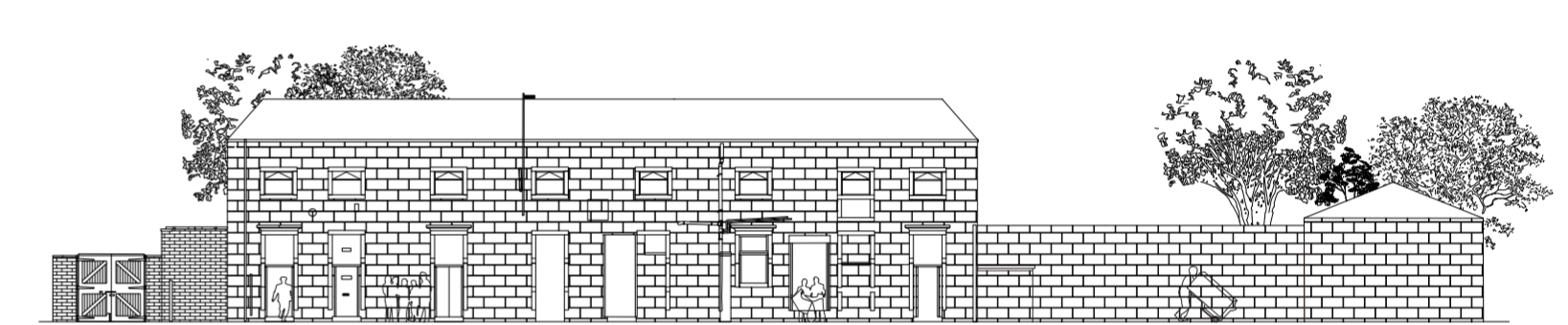
PROPOSED GROUND FLOOR PLAN



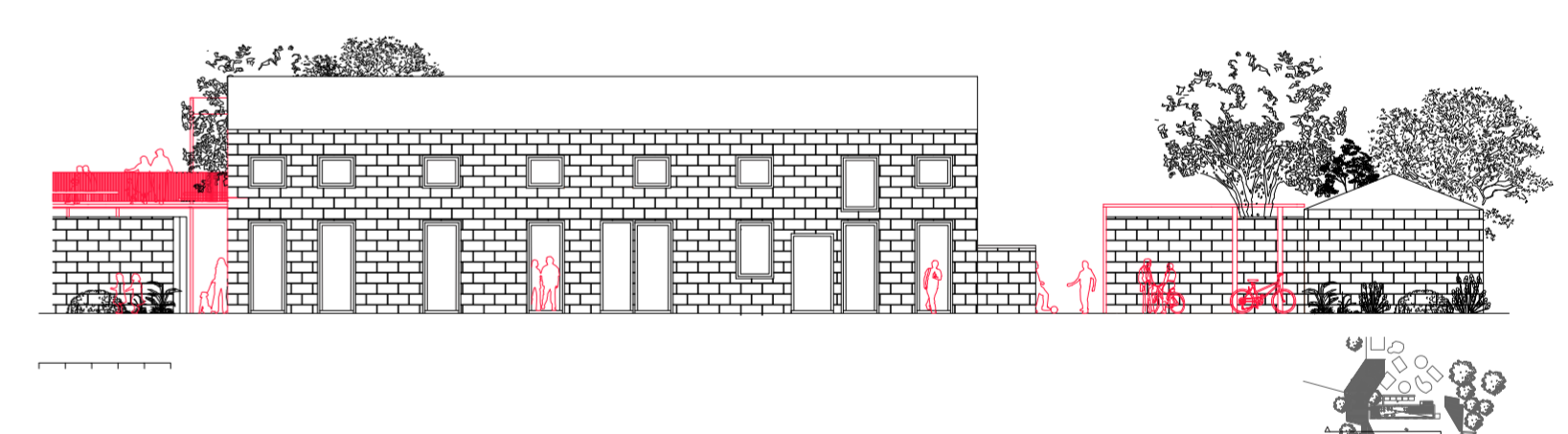
PROPOSED FIRST FLOOR PLAN



EXISTING ELEVATION



PROPOSED ELEVATION

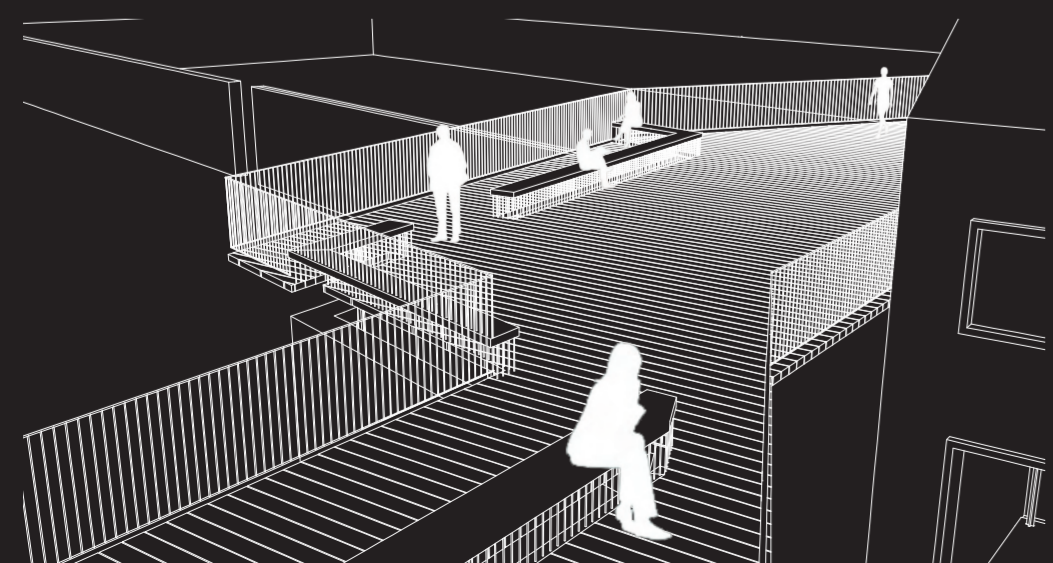


The ground floor holds a cafe with seating inside the stable block and a hireable space within the coach house. Under the raised platform lies a kitchenette, potting area, bike store and simple sheltered areas around the playground and gardens.

The first floor of the stable block holds a fully insulated internal pod for hire and a viewing platform that is accessible via the raised platform. On the raised platform there are growing patches, benched seating looking over the park, and a covered reading nook that can be doubled as a stage for performances.

The proposed elevation simply takes the existing facade and replaces the windows to a thin-rimmed design. The historic layers and adaptations will remain in their current form. The steel frame and decking sit above the existing walls creating a clear disconnect in materials.

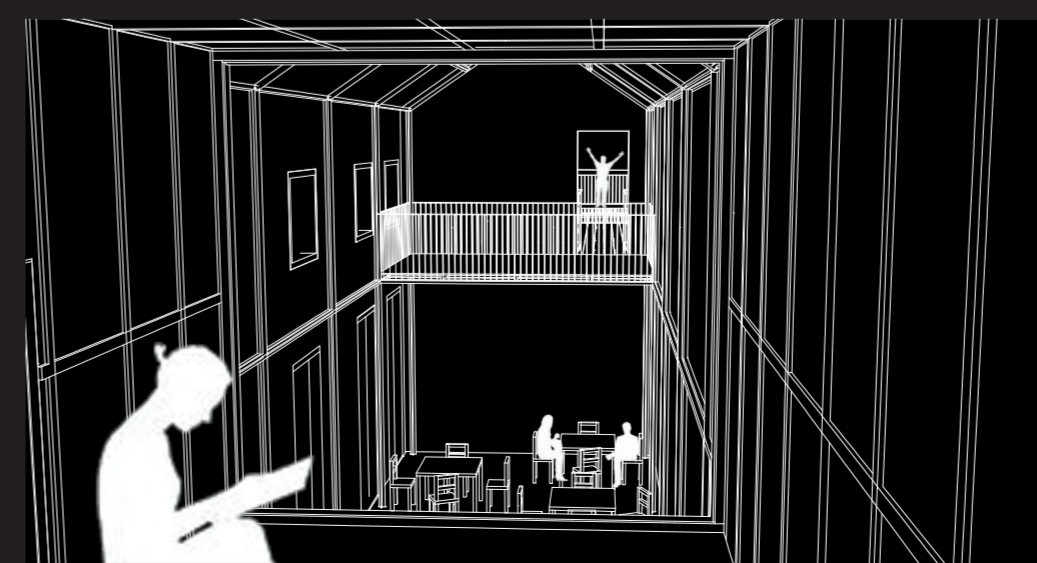
PERSPECTIVE SNAPSHOTS



Raised Wrap-around Walkway



Entrance to Stable Block



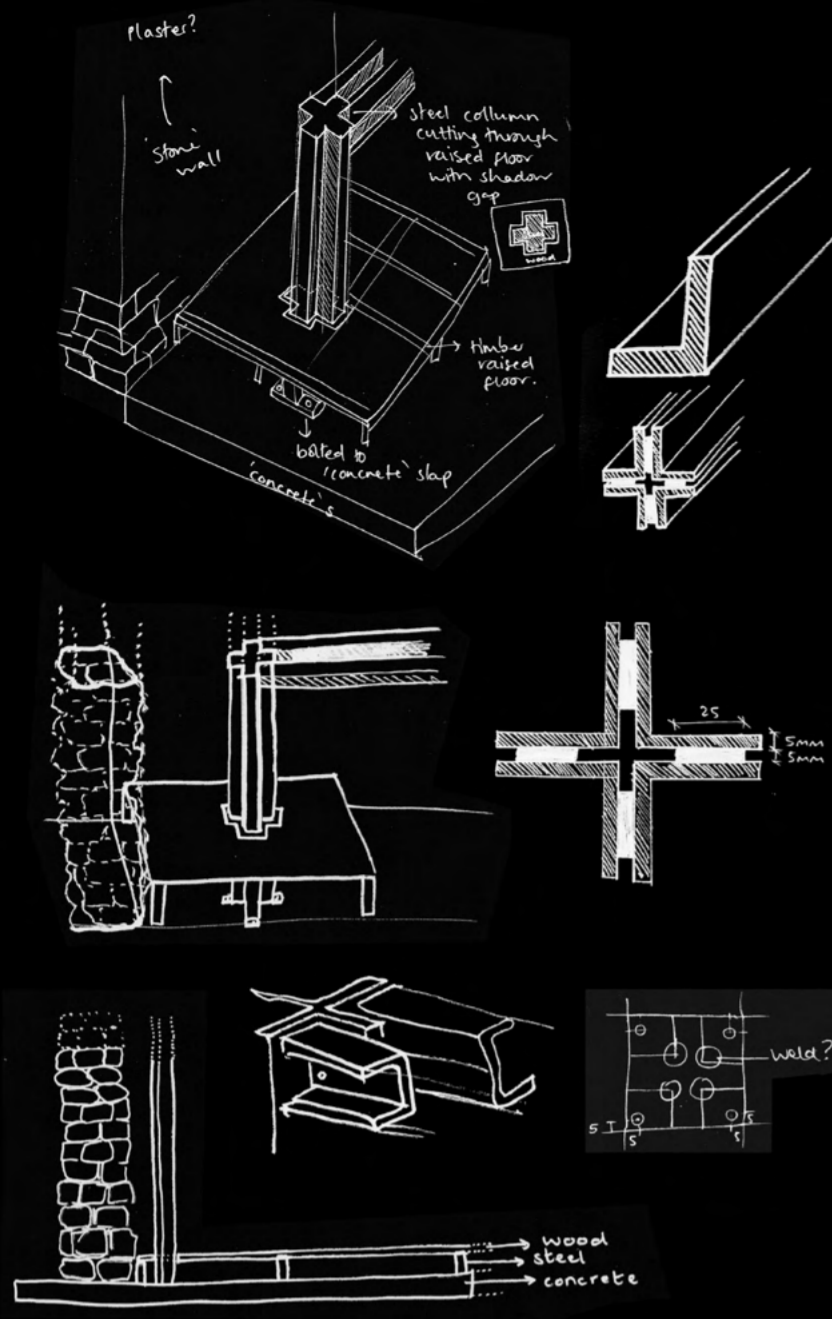
View from Internal Pod



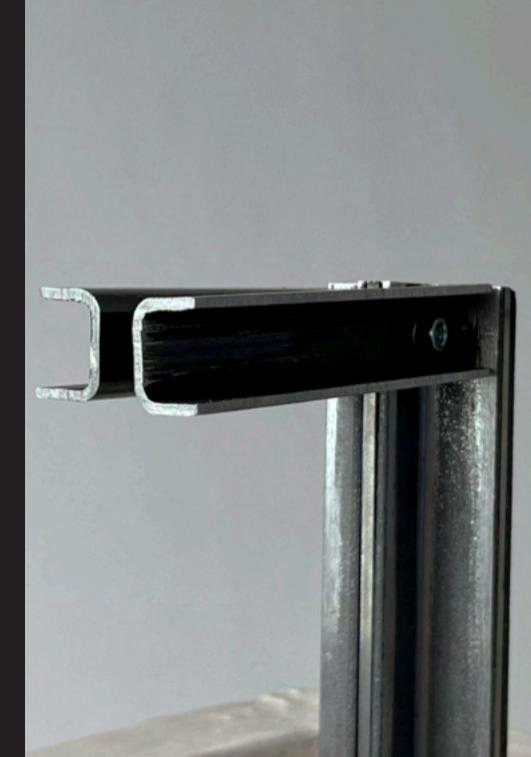
View from Internal Viewing Platform

**PHYSICAL
DETAIL
MODEL**

Creating a 1:4 scale model of the steel frame column and its relationship with the wall and floor helped to understand the materiality and size of the proposed design. The same steel columns would be used to create the internal system and form the external raised walkways also.



**STEEL
C-BAR**



**CRUCIFORM
COLUMN**



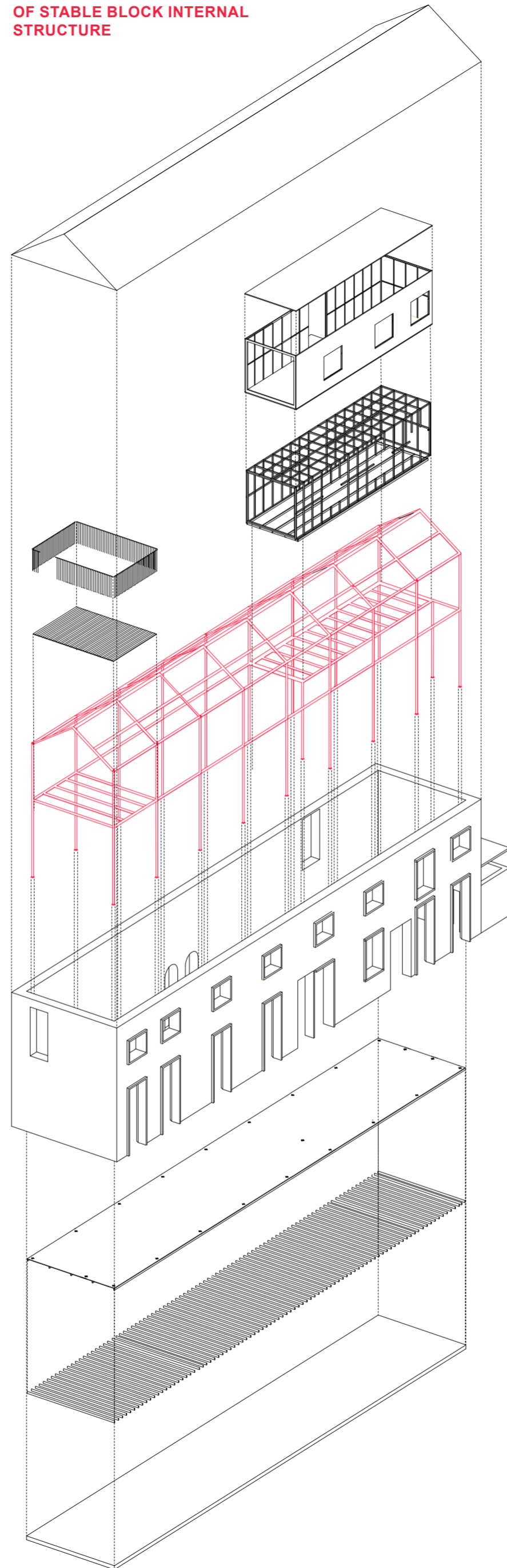
**SHADOW GAP
RAISED
FLOORING**



**SEPARATION
FROM
WALL**



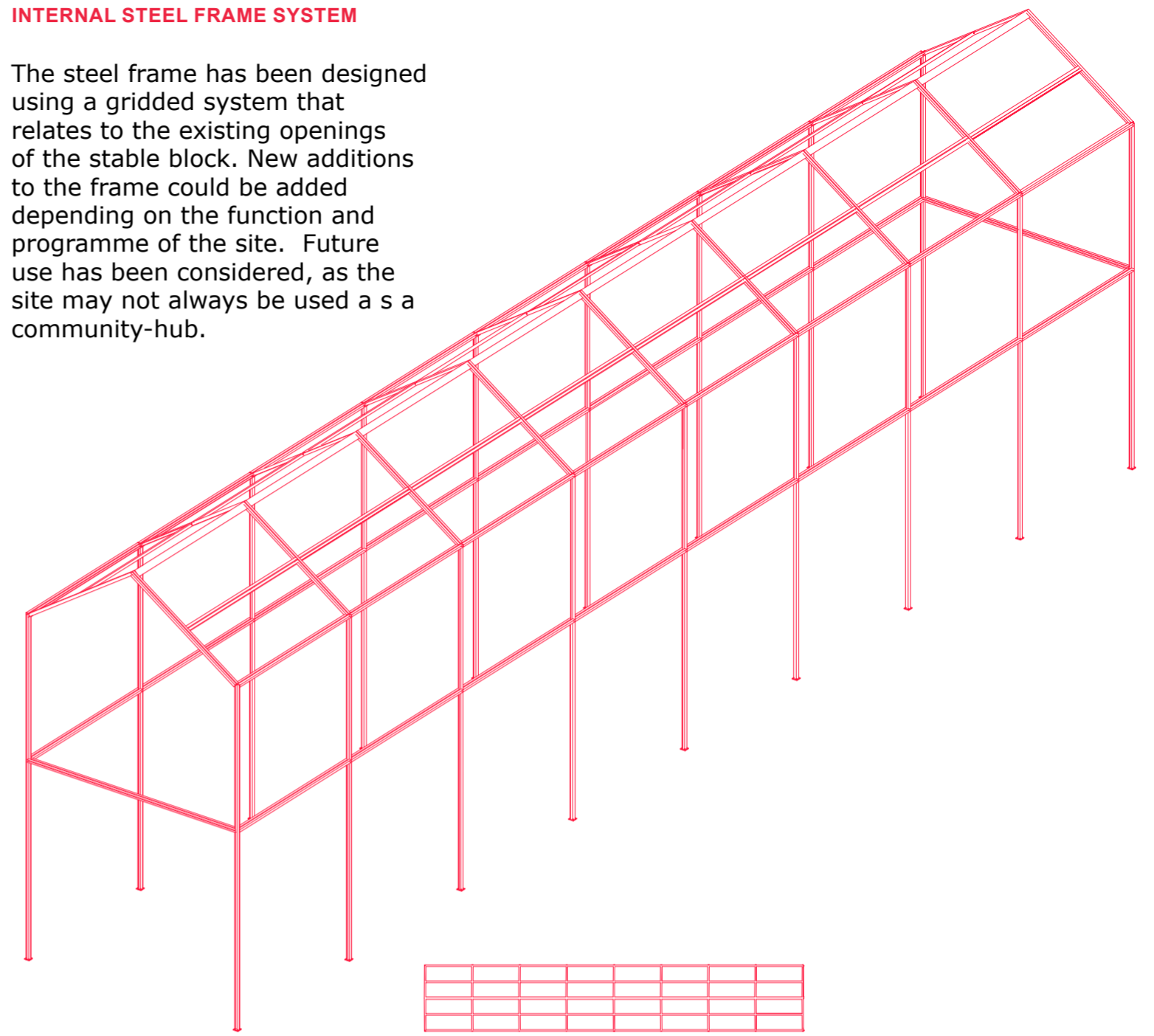
**EXPLODED AXONOMETRIC
OF STABLE BLOCK INTERNAL
STRUCTURE**



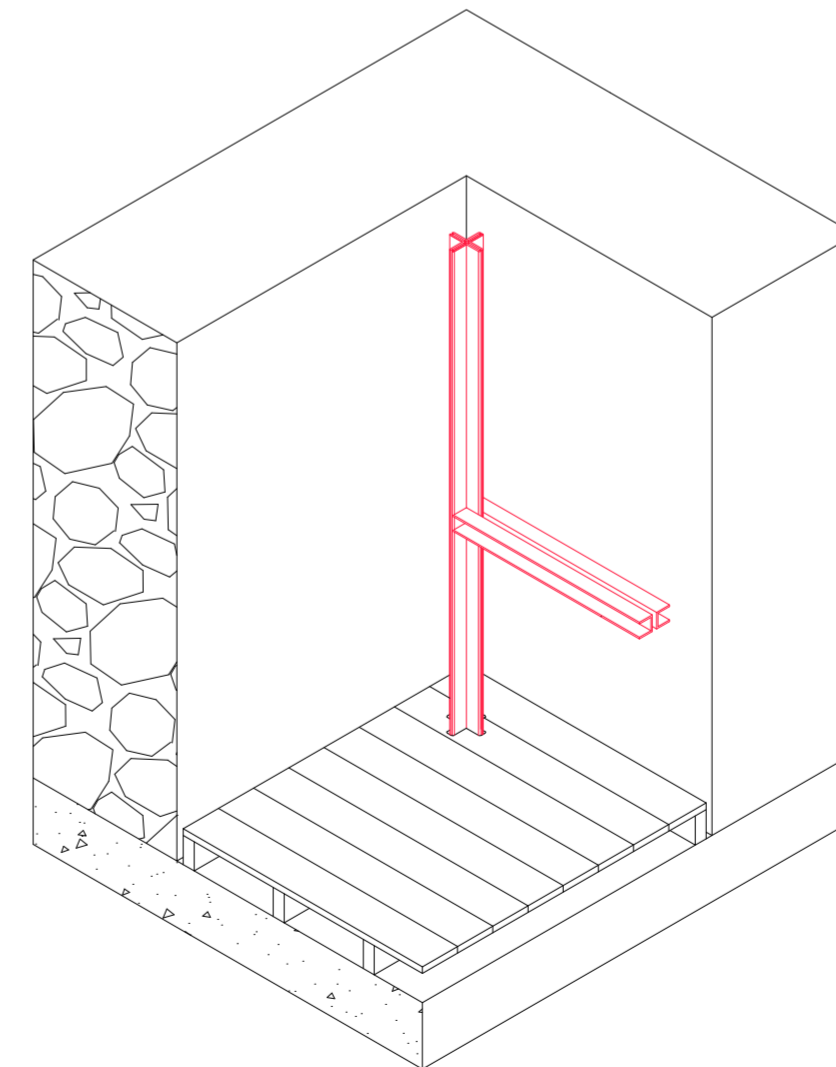
Within the stone walls of the stable block sits a new steel frame insertion. An internal pod and viewing platform also rest on the frame creating new spaces for hire and observing.

INTERNAL STEEL FRAME SYSTEM

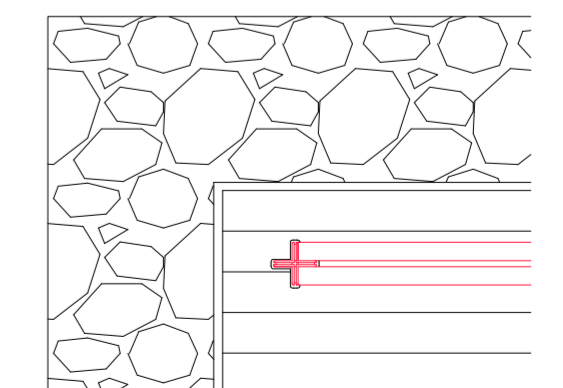
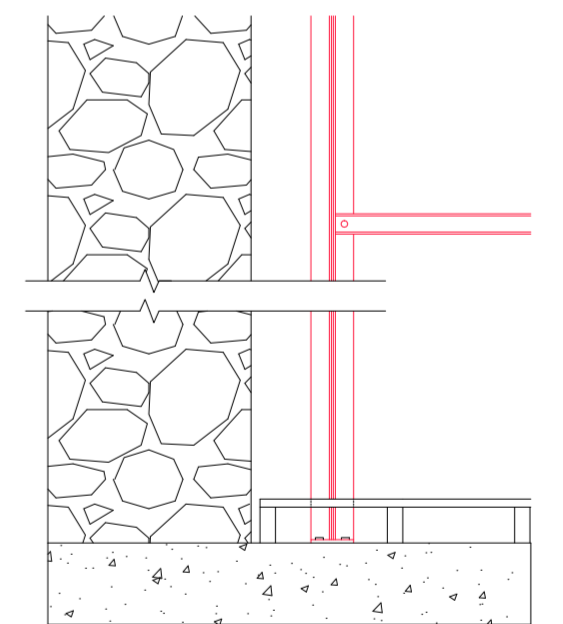
The steel frame has been designed using a gridded system that relates to the existing openings of the stable block. New additions to the frame could be added depending on the function and programme of the site. Future use has been considered, as the site may not always be used as a community-hub.



DETAIL DRAWINGS OF STEEL FRAME



The steel frame is separated from the existing stone walls and so the idea of isolation contrasting materials is clear in the detail.



0mm 200 400 600 800 1000