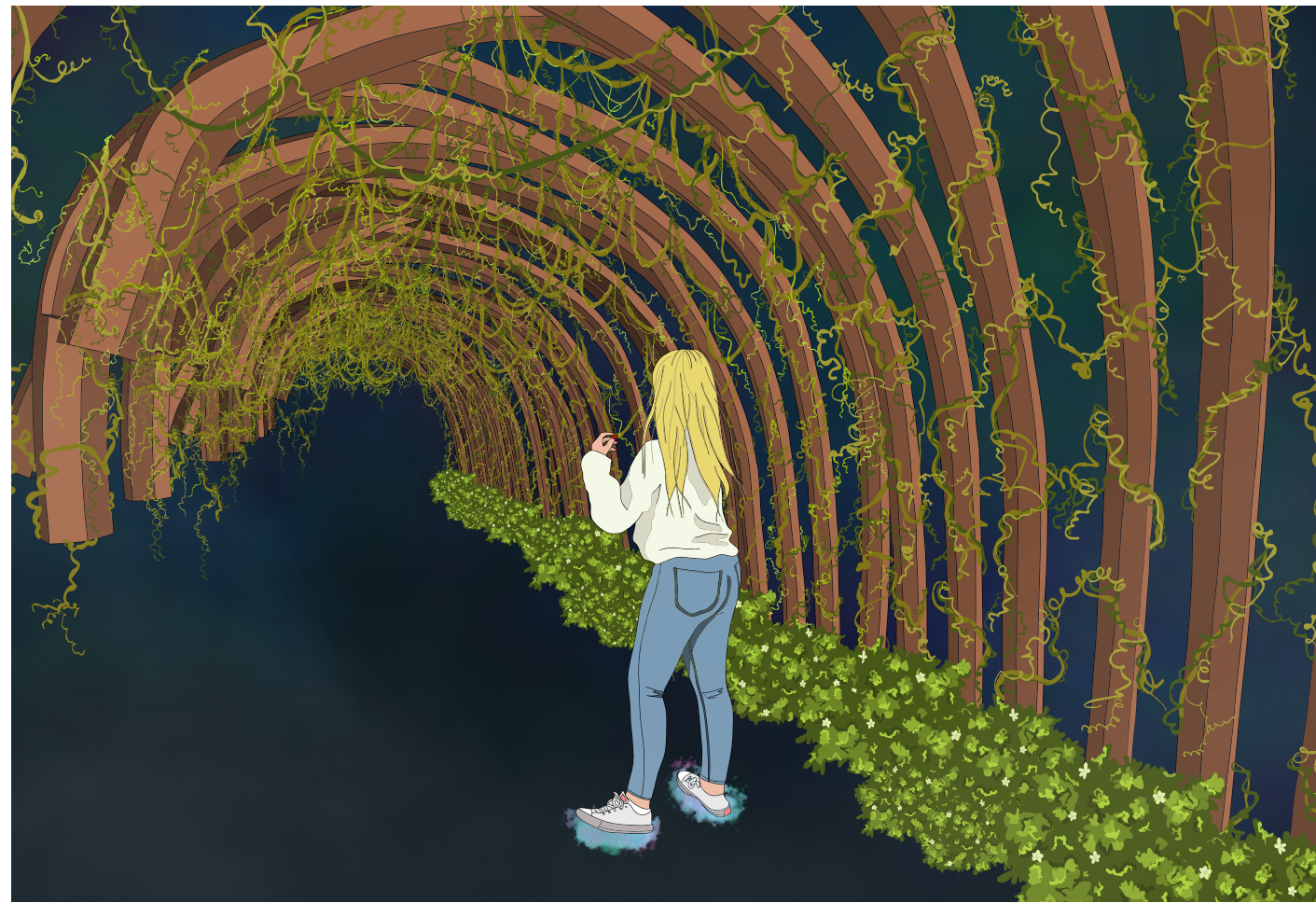


Entering the Tunnel

The Explorers Entrance to the Experience.

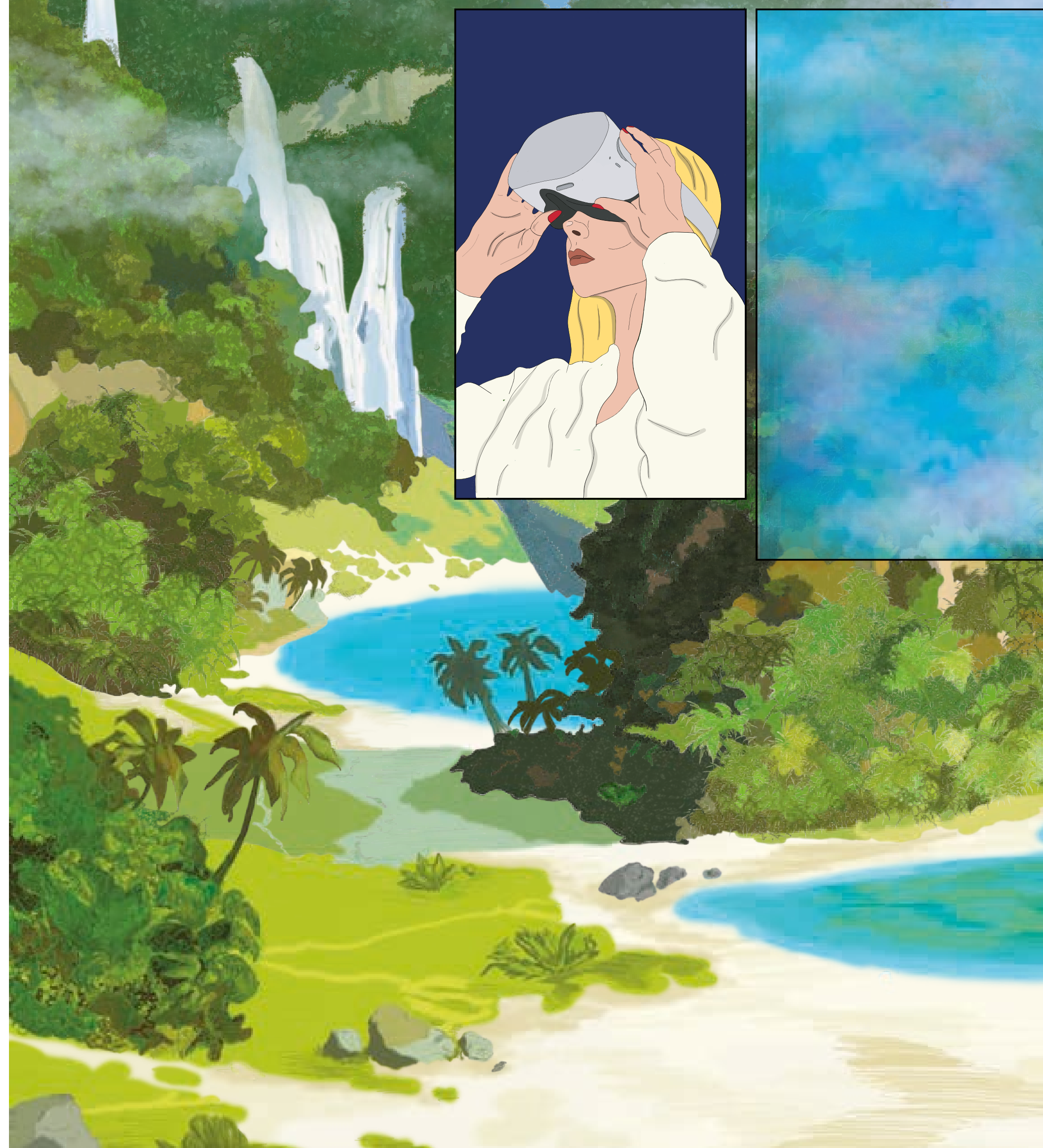
The explorer takes the tube, iconic to London but often overlooked by the citizens of the city. Sitting next to a family visiting from Edinburgh, the excitement of the little girl and her trip on the tube in infectious, the explorers desire to see new places is reinforced. Arriving at the bustling Oxford Circus station, she makes her way up to Oxford Street where the Island Archipelago experience is located.



The entrance tunnel



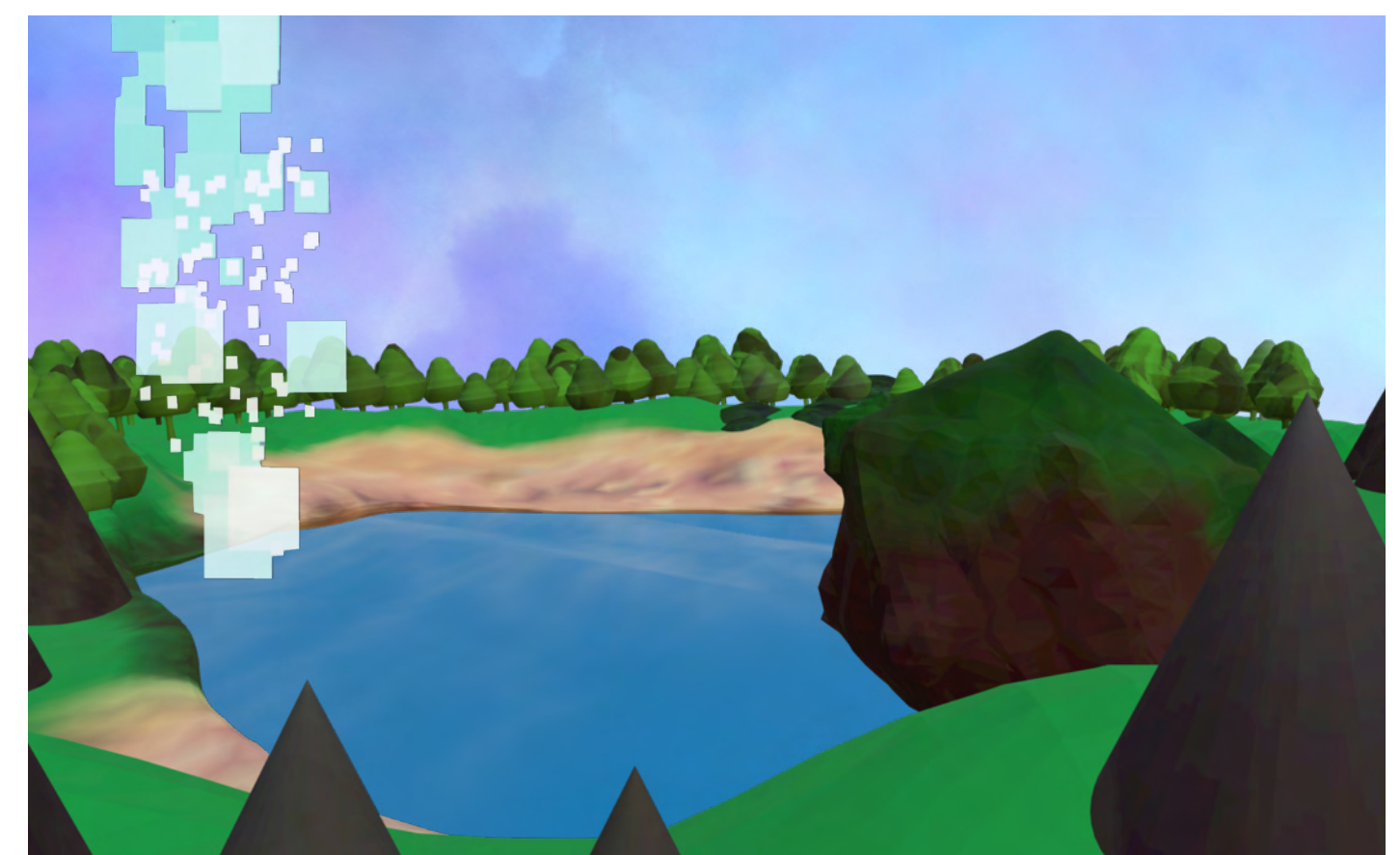
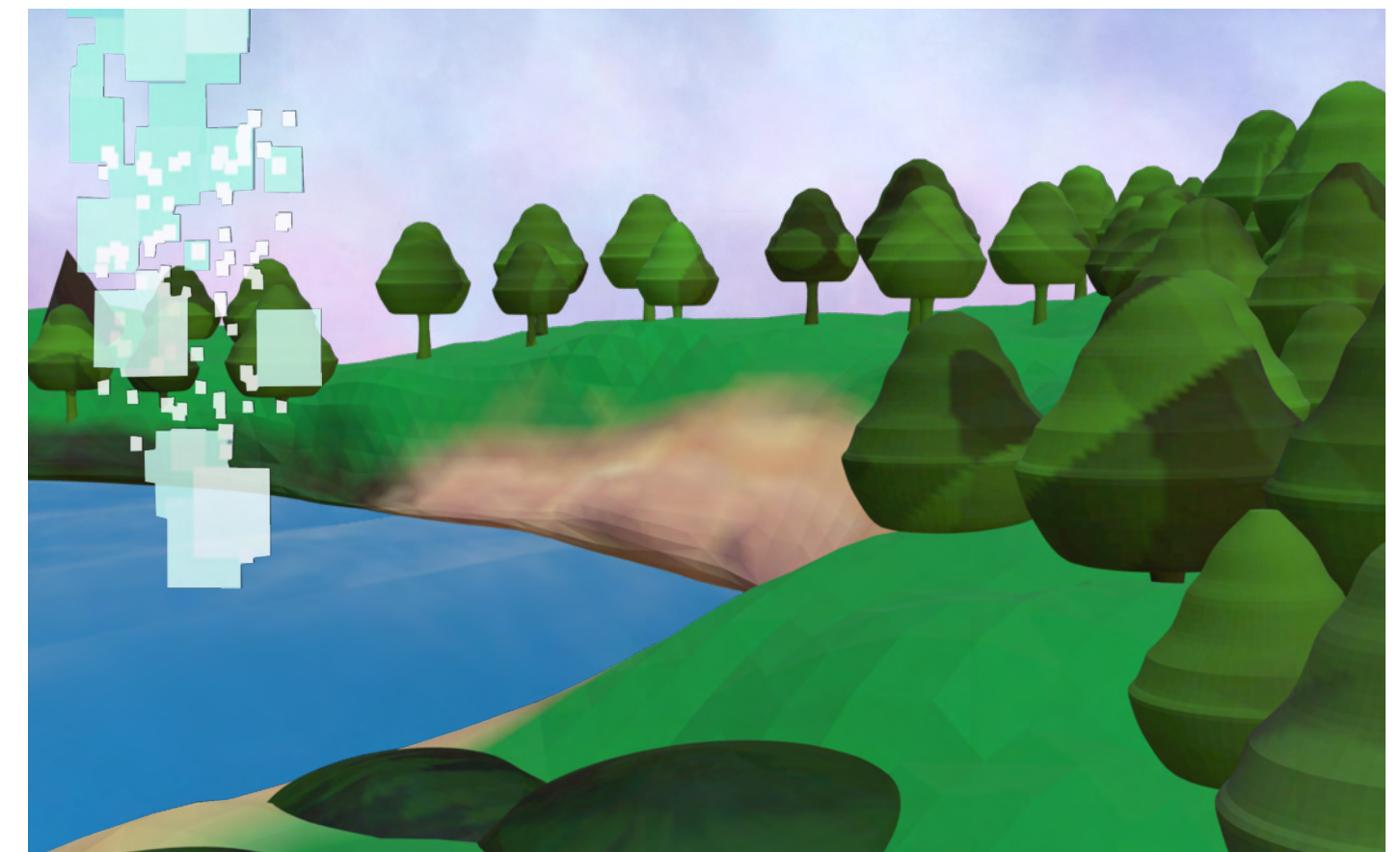
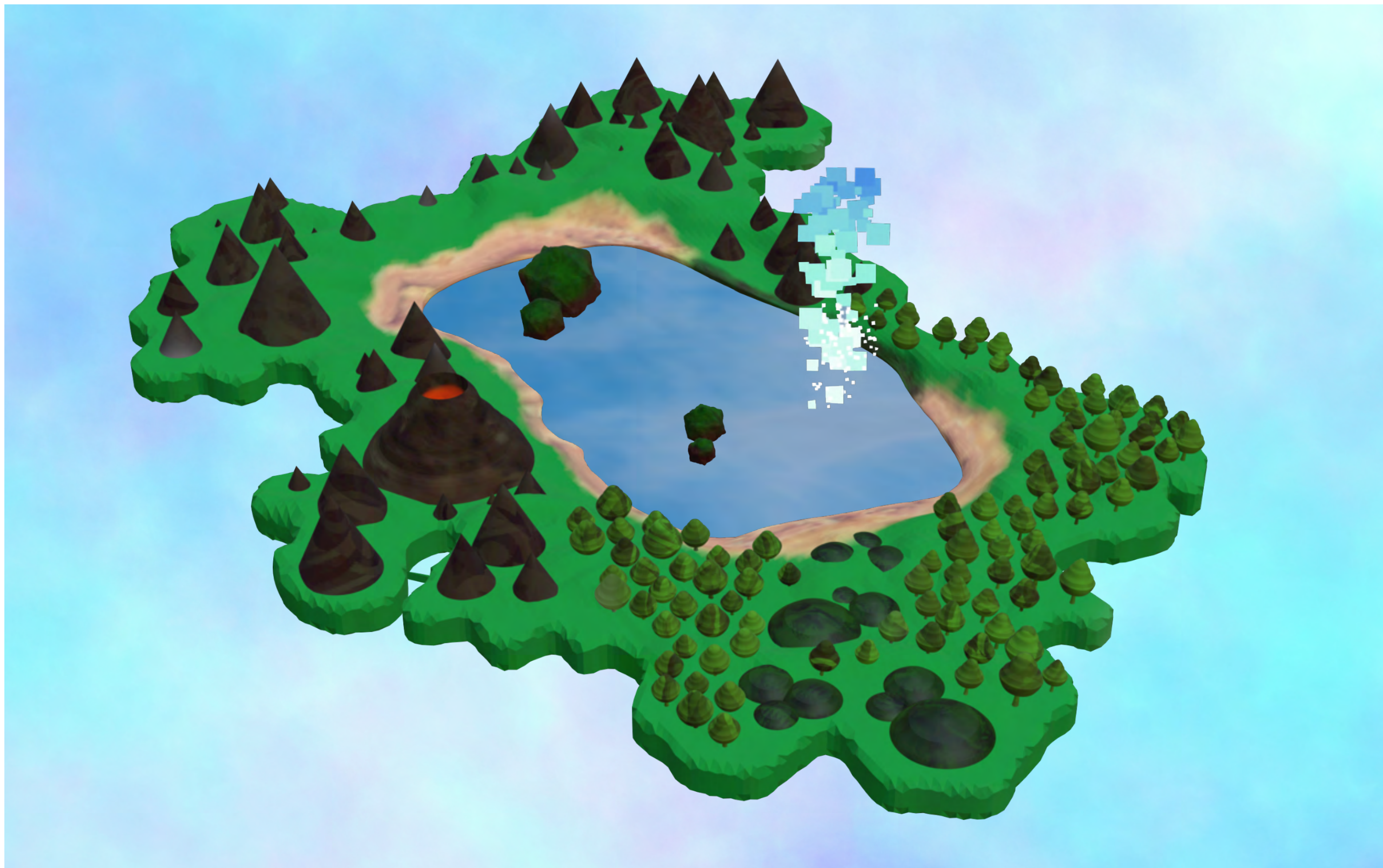
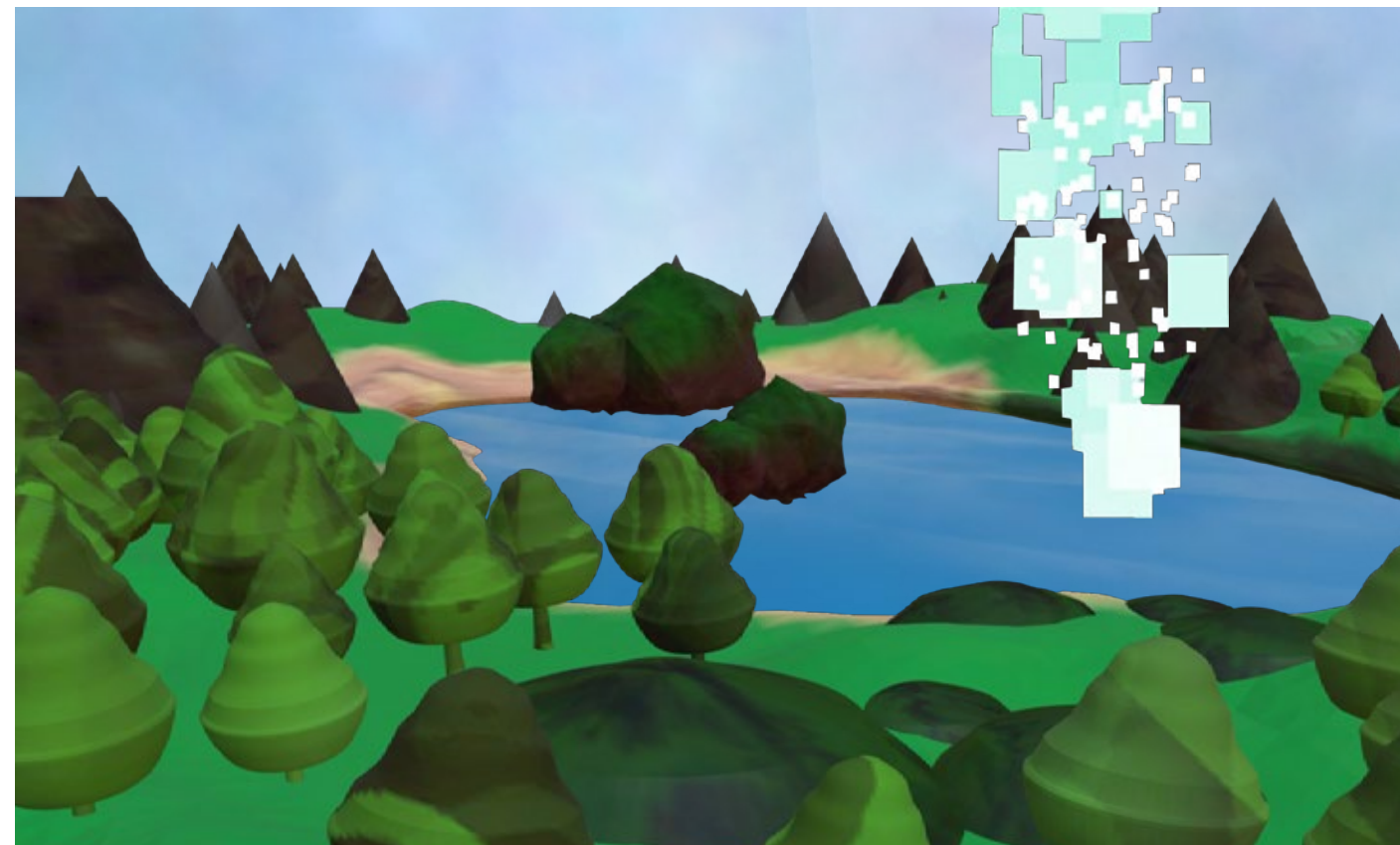
The Reality Room



The Waterfall

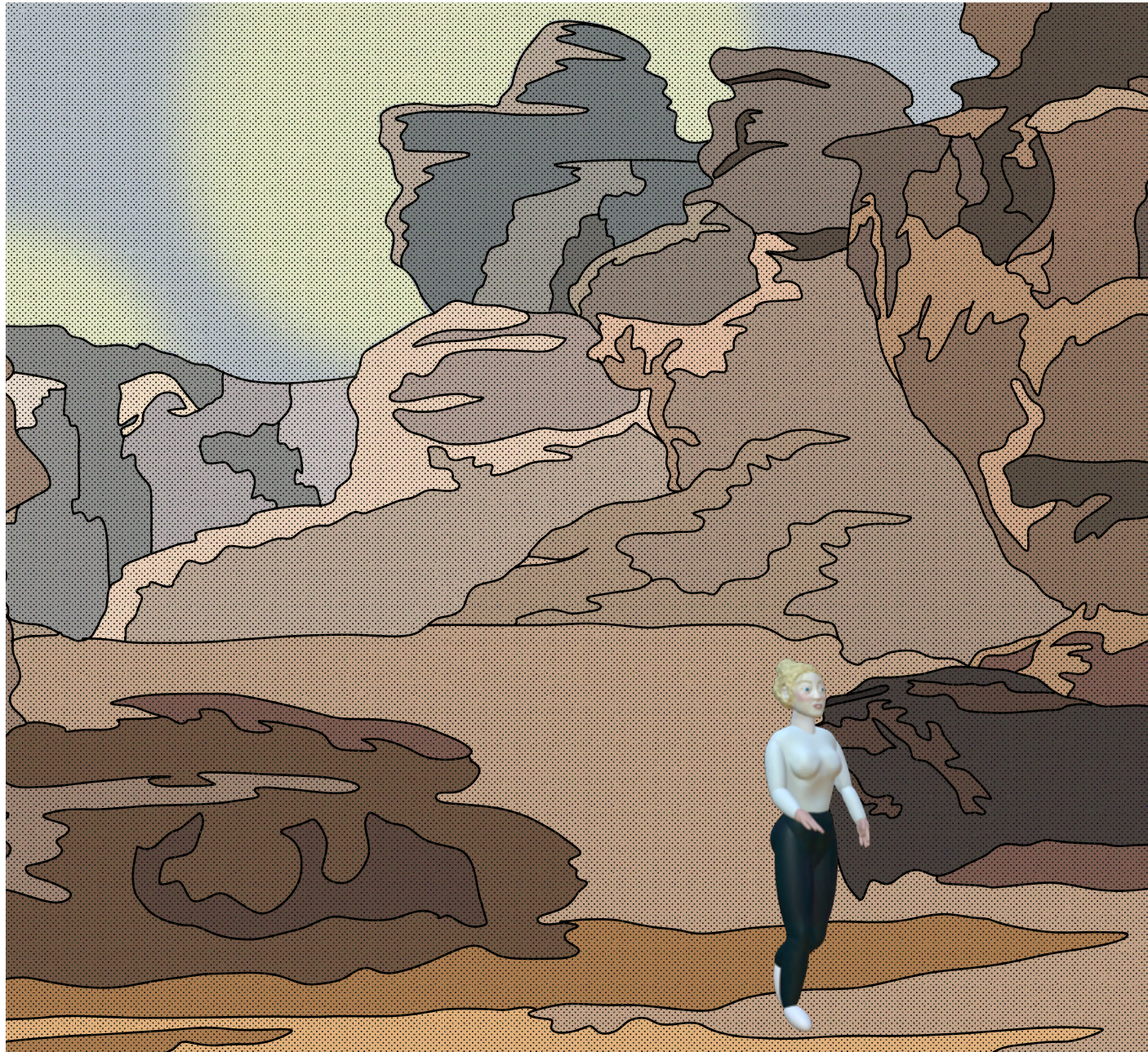
VR Tropical Island Model: Blender and Mozilla Hubs.

In the virtual world explorers witness the natural ecosystem of the different environments. This allows explorers to learn about the plants, animals and atmospheres essential to life. Whilst also enjoying the spectacular scenery of the virtual island.



Virtual and Reality

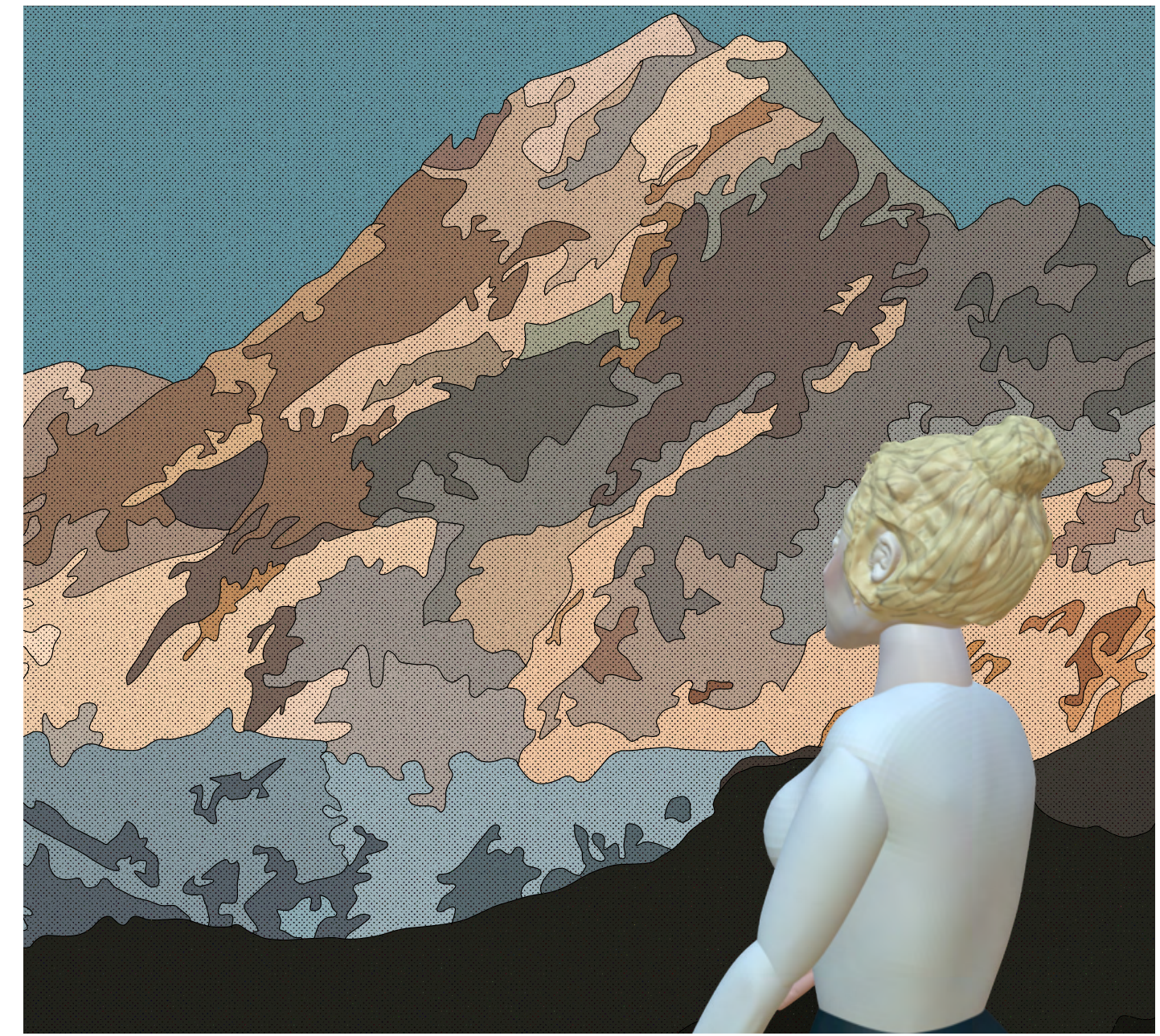
Perspective views showing real and fake.



Virtual Desert Island



Virtual Tropical Island



Virtual Continental Island



Physical Desert Island



Physical Tropical Island



Physical Continental Island

The Island Archipelago

Tube Adverts.

After returning the VR headset and collecting her bag the explorer makes her way home, luckily she manages to find a seat on the busy tube. Looking up she sees an advert for the Island Archipelago experience.



EXPERIENCE A NEW WORLD AT THE
ISLAND ARCHIPELAGO

124 OXFORD STREET