

RE use. claim. wear. repeat.

Wardrobe of the future

PROJECT DESCRIPTION

Fabrican aims to tackle the issue of **excessive consumption** and **textile waste** by introducing a sustainable and innovative solution. RE, will serve as a flagship store for Fabrican, promoting the benefits of the technology developed by Manel Torres. RE, will offer **workshops** and educational programs to help the public understand and explore the endless opportunities for creating their own **customized clothing** using sprayed fabrics. Promoting body positivity as the spray clings to the body. Hoping to contribute to a positive impact on the environment while also inspiring **personal expression** and **creativity**. Additionally, RE will provide a platform for **local sourcing** from the many charity shops in Farnham, while attracting like minded shoppers encouraging the community to engage in **reuse** and recycling practices whilst also keeping up with trends.

THE PROBLEM

92 million tonnes of textile waste end up in landfills.

That's 92 million Volkswagen Beetles.



THE SOLUTION

SPREAD AWARENESS

SUSTAINABILITY



Fashion designer Manel Torres. Proposing a Spray on fabric that can be **sprayed directly onto the body** creating a **seamless** and

THE LOCATION

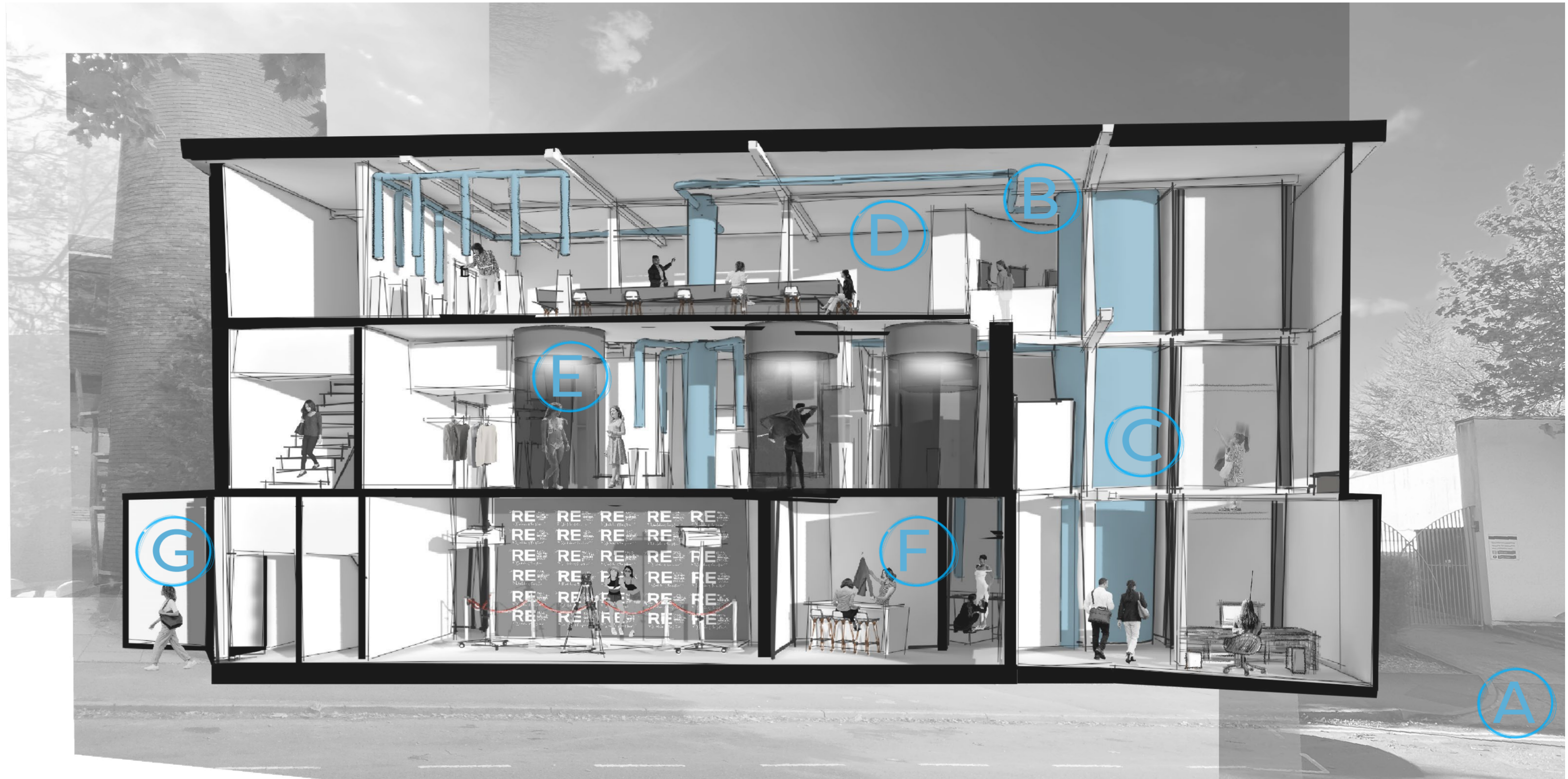


The location is ideal as it's surrounded by a variety of clothes shops and charity shops within a short walking distance. There is a clear indication of the community's passion for vintage and reused fashion, making this workshop a perfect fit for the area.

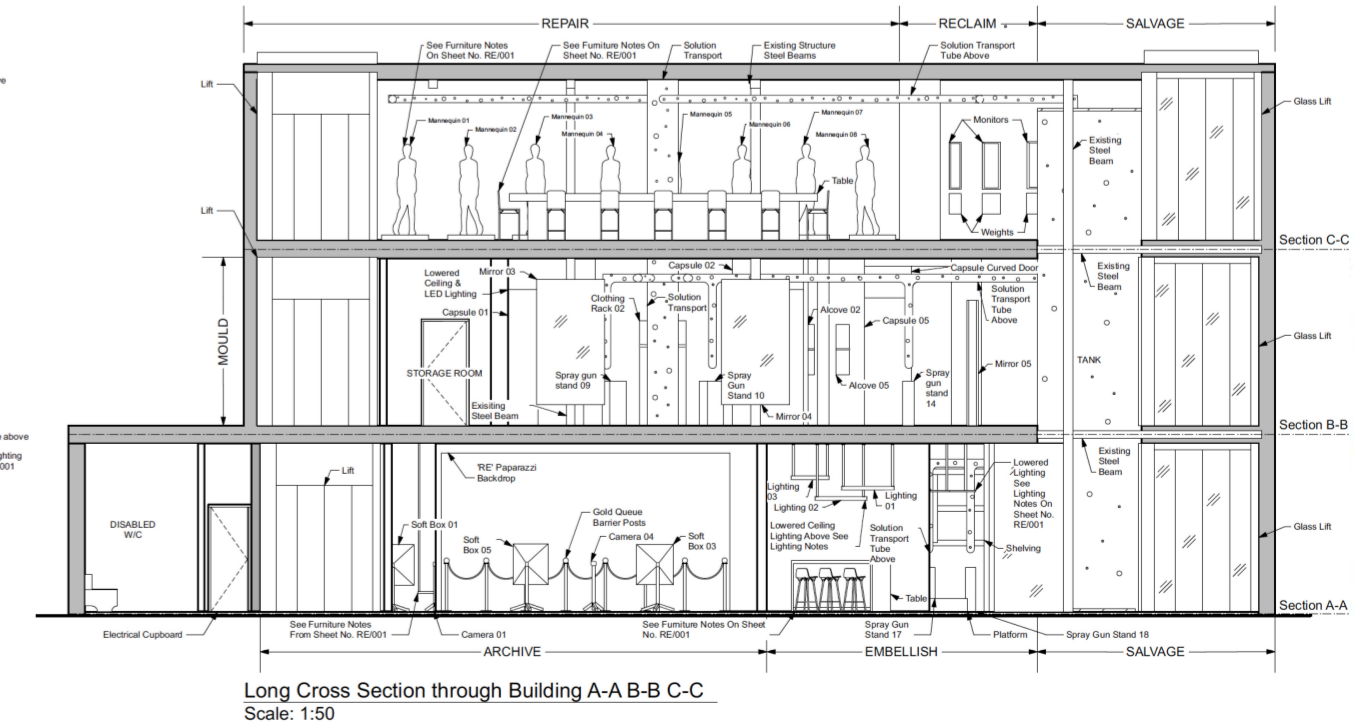
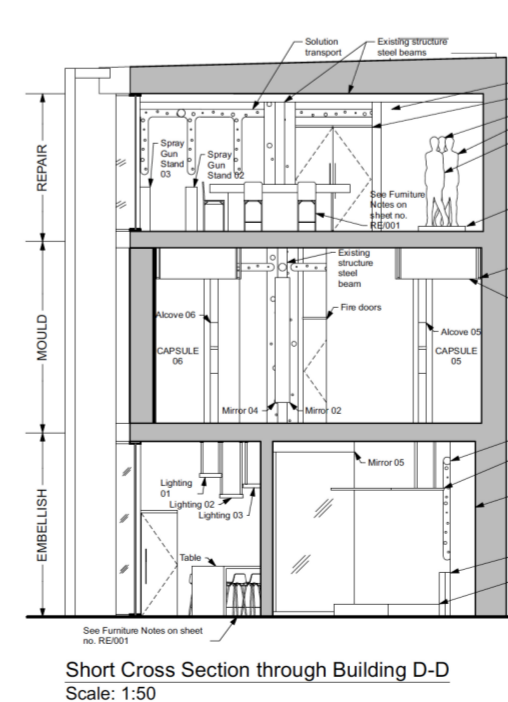
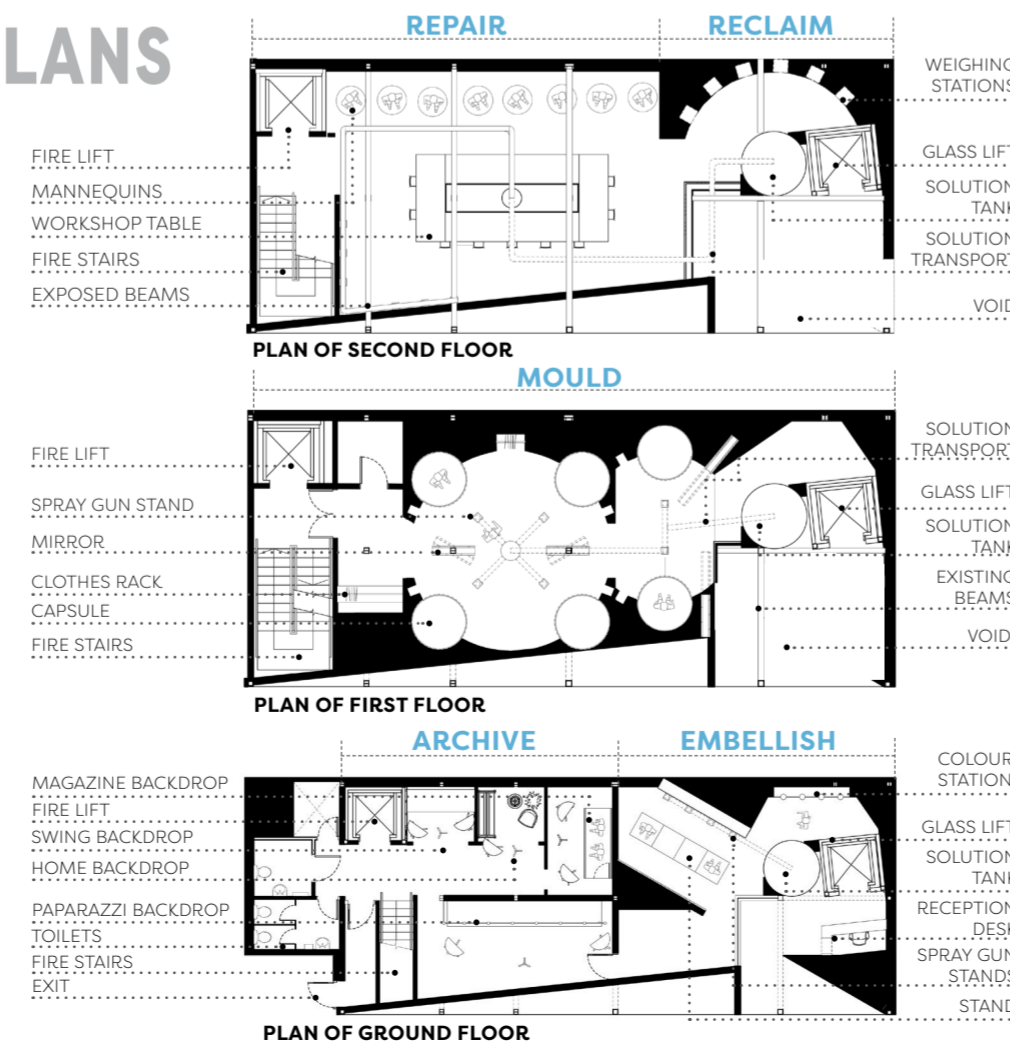
- CLOTHES SHOPS
- CRAFT STUDY CENTRE
- CHARITY SHOPS (LOCAL SOURCING)
- CONSCIOUS CONSUMERS

MATERIAL JOURNEY

RE will already have charity donations stored into the solution tank (c) but users will be required to bring their own clothing to weigh (b) this is to calculate what each user is putting into the tank and what clothes they can spray out of their donations, and drop into the solution tank which will then be carried around the building through glass tubing lining the ceilings, serving both as way-finding and as a visual display of the production process. This approach ensures **transparency** of the destination while providing an **interactive experience** for visitors.



PLANS



MATERIAL BOARD

Theory behind material board

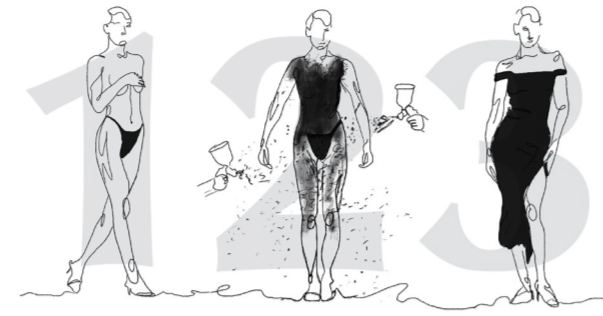
By challenging the conventional 2D material boards, I created a sculpture like material board with the use of a spray gun with welded metal poles symbolising the act of spraying. Old materials such as reclaimed wood, metal and concrete are featured inside the bowl which is then 'sprayed'. Therefore, the materials themselves represent the users' actions of bringing in the old clothes and creating something new. The process of using the spray gun throughout the space embodies this transformative concept.

RE		
CRAFTS STUDY CENTRE, UNIVERSITY FOR THE CREATIVE ARTS, FALKNER ROAD, FARNHAM, SURREY, GU9 7DS		
ORDER #0127		
FRIDAY, MAY 5, 2023		
QTY	ITEM	
01	WALLS & FLOORS - CANDOUR CINEREA GREY TILES	00+00
02	WALLS & FLOORS - RUSTIC MASONRY CLASSIC RED BRICK EFFECT TILES	00+00
03	ARCFORM- MATTE BLACK STEEL	00+00
04	LUXURY FLOORING - ELGIN MOON ENGINEERED OAK	00+00
05	DERALAM- AMO 474 MIRROR	00+00
06	PRAD GLASS - FROSTED GLASS	00+00
07	DULUX - GREY STEEL 1	00+00
08	DULUX - GREY STEEL 2	00+00
09	DULUX - GREY STEEL 4	00+00
ITEM COUNT:		09
CARD #: **** * 6136		
6 7161 02342 7		



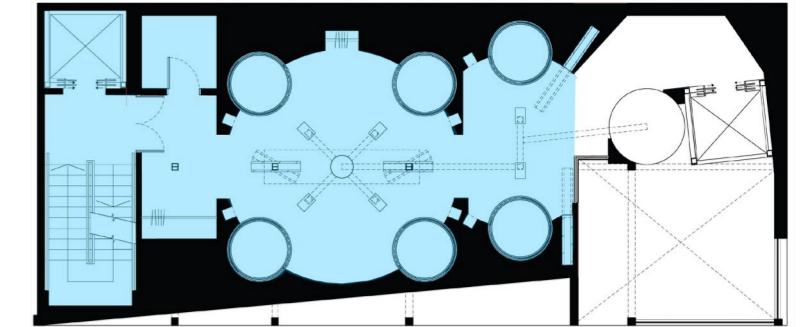
BODY POSITIVITY

READY SPRAY WEAR



The concept of **mould**, meaning to **fit the body very closely**, is emphasized, as the personalized outfits **fit all body types**, with the **body becoming the mould** and the spray forming around it. This is reflected in the **seamless curved walls** and **graphics clinging onto the walls**, representing the process of users covering themselves up as they spray.

Users spray on each other, creating a close-fitting, mould-like shape that follows the curves and contours of the body. Ultimately, the process of the user is represented in the design, with a focus on **individuality, inclusivity, empowerment** and embracing our **lumps, bumps, and edges!**



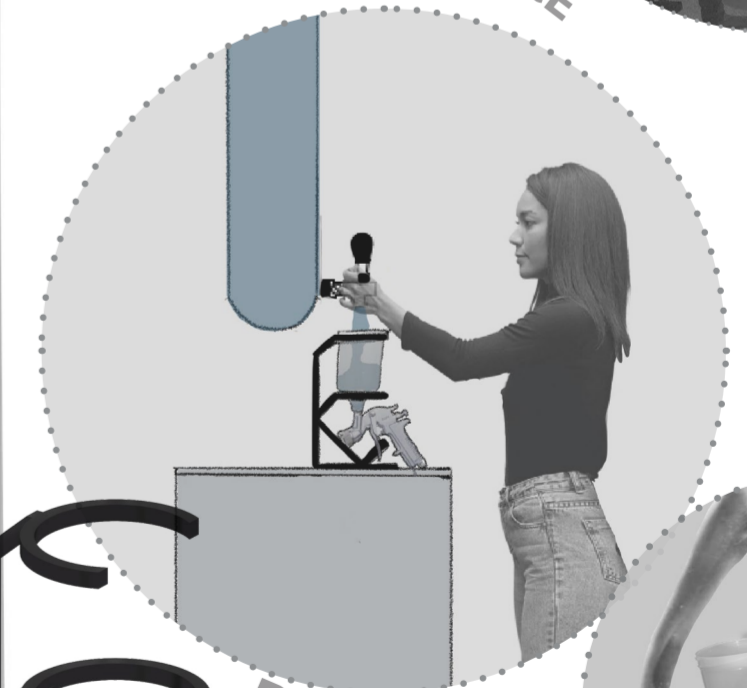
TRANSPARENCY



Frosted glass provides a level of **privacy** while maintaining a certain degree of **transparency**, while its seen as adding another **layer**, akin to **spraying on multiple coats**.



STORE



POUR



SPRAY

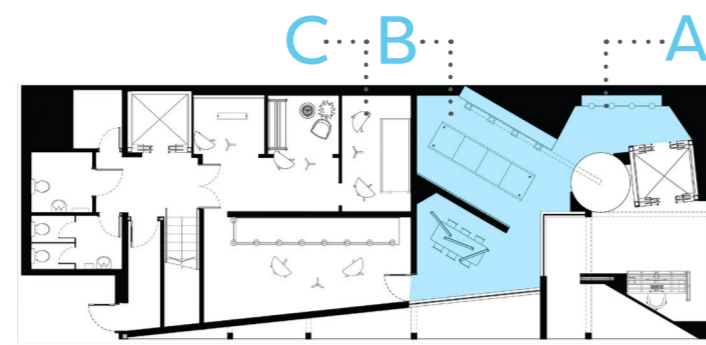
The activities of the **opposed user**. Spraying the solution onto friends with a tap to enable control over solution amount.

EMBELLISH

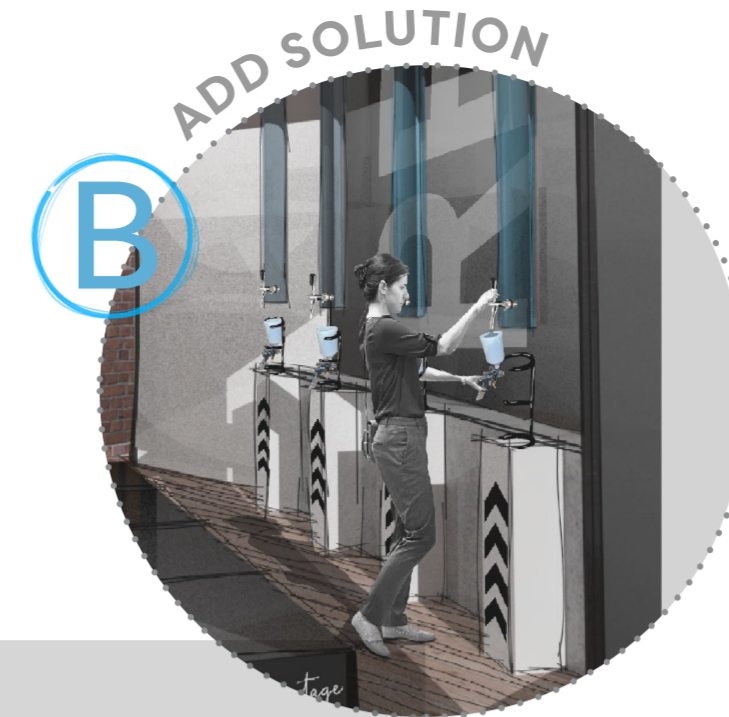
Adding the finishing touches

Embellish means - **make something more attractive by the addition of decorative details or features**, which has been reflected in this space through the **use of materials**, by introducing new materials such as **polished floor** and **paint**, much like adding colour and thread to garments.

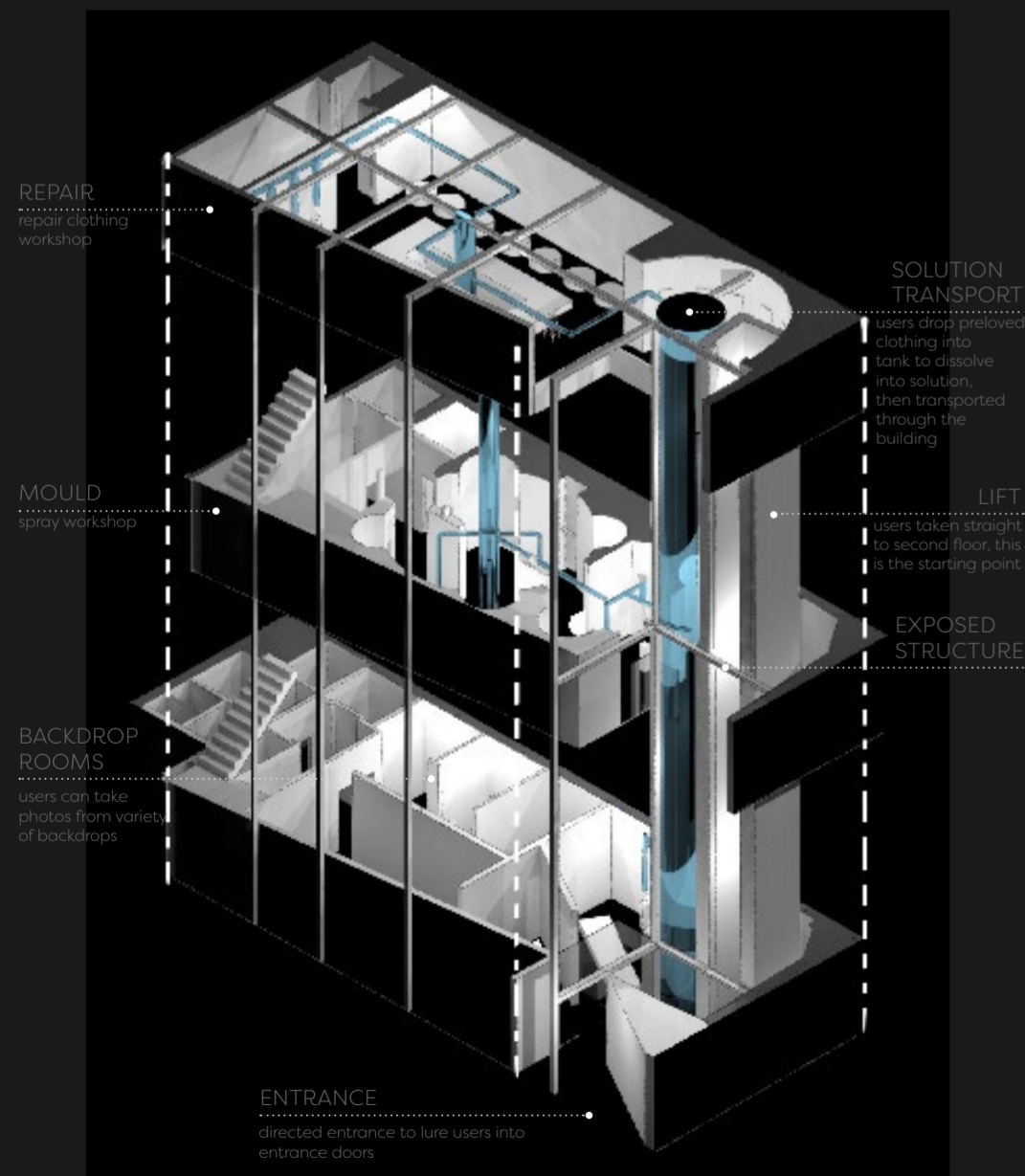
Materials have evolved from unfinished oak to polished oak and paint added to walls, giving materials new uses such as, polished concrete and applying this to the walls instead. This represents a transformative process of **preserving the old while improving upon it** which echoes the concept of bringing in old materials and clothes and making something new.



Embellish allows users to add the finishing touches to the garments, by adding colour, colour journey represented through A, B, C.



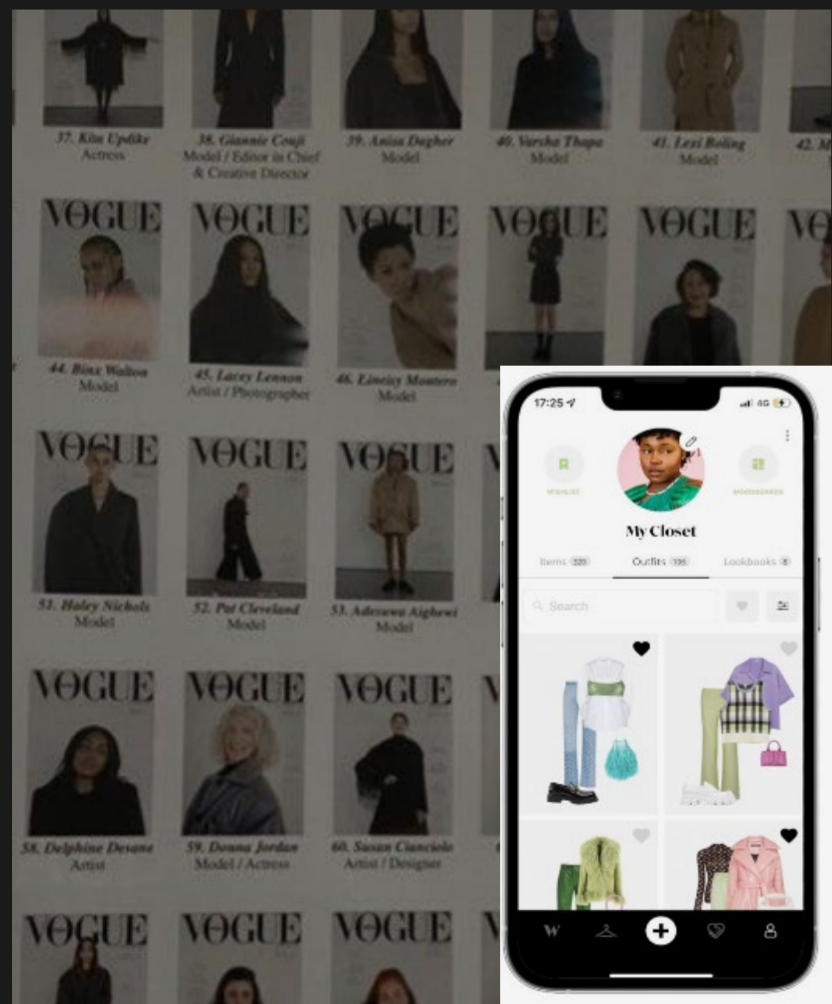
EXPLODED AXO



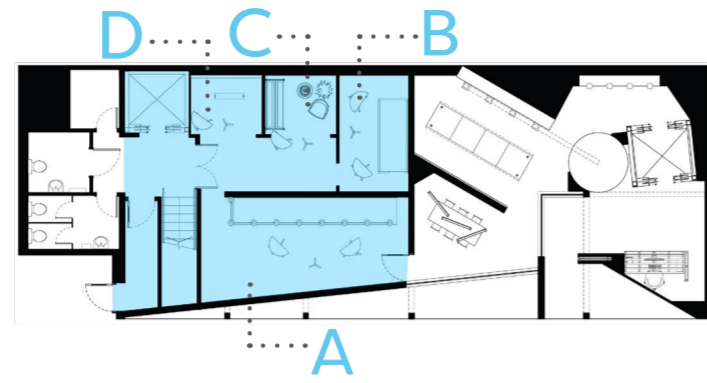
ARCHIVE

Digital wardrobe

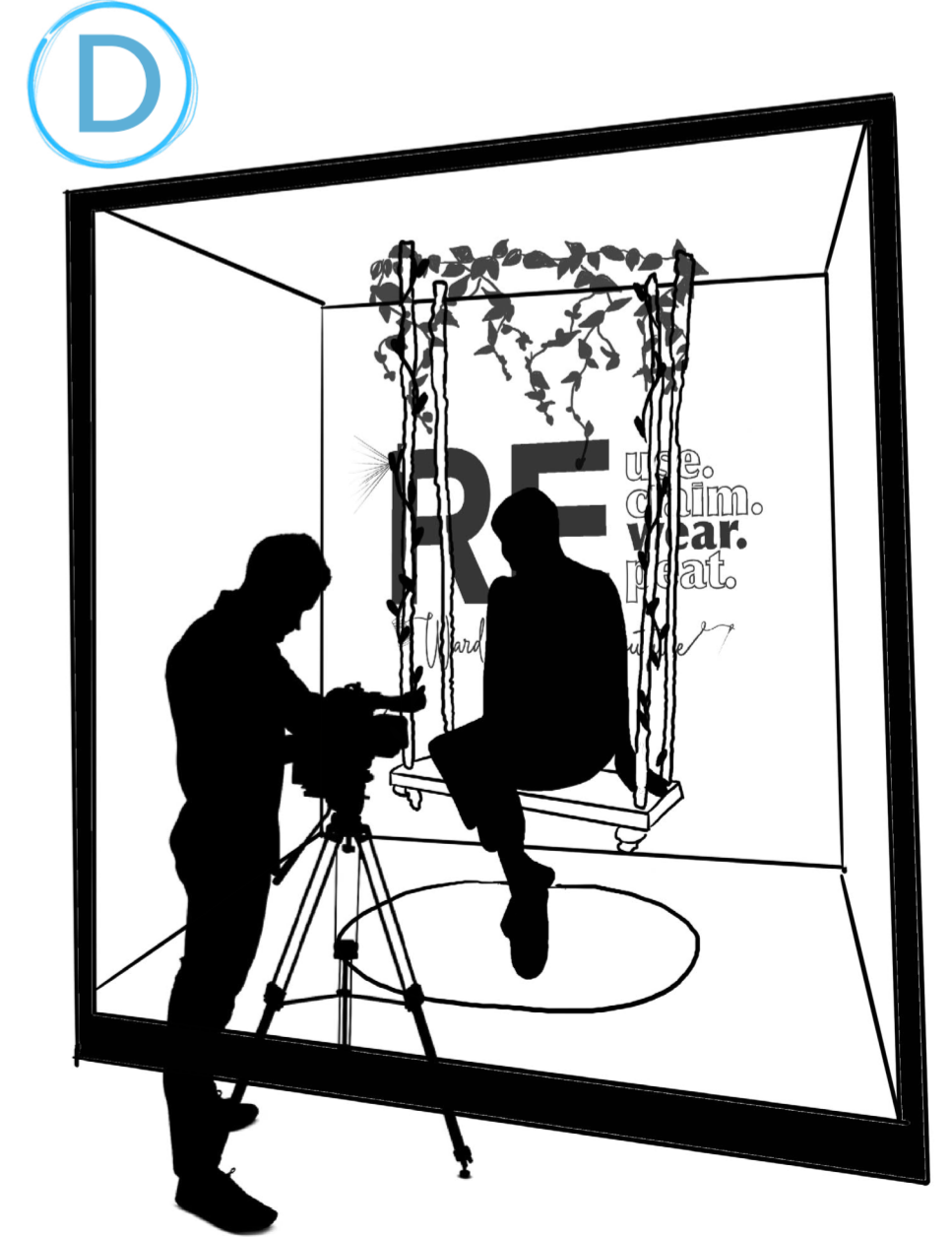
- A set of documents and files that are available on the internet for people to look at.
- To store old records or documents so that you can access them again in the future.
- A place where historical records are kept.



WARDROBE OF THE FUTURE



As I have **undressed** the building, I uncovered the history of the Craft Study Centre, which I am reflecting in Archive. The existing site had a method of archiving and storing information, which relates to the concept of the Digital Wardrobe. Users will be able to use a variety of **backdrops** such as paparazzi backdrop, a magazine backdrop, a home backdrop and a swing backdrop for taking photos and uploading it onto **RE: website** by scanning a **QR code**, this enables the users to share their experience with their new garments to refer back to upon a revisit.



BACKDROPS

