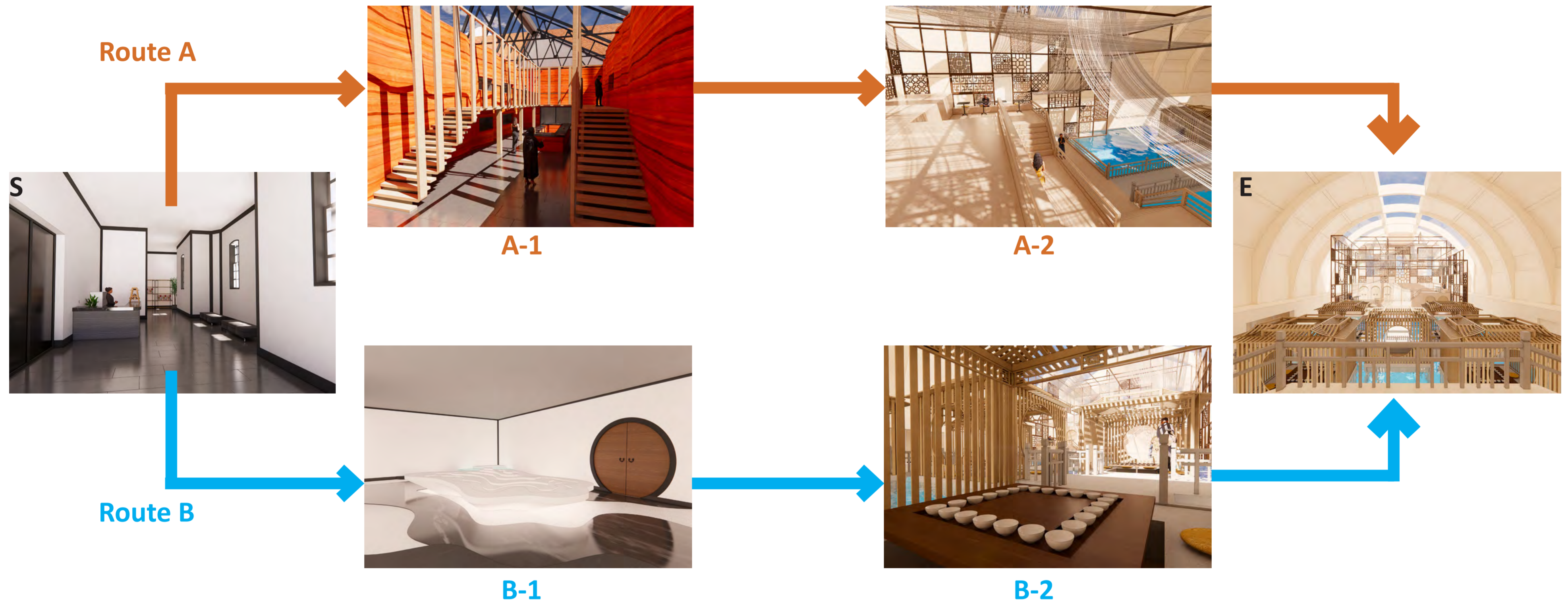


Story Board and Journey

S: From the reception, after visitors bought their tickets, they will be lead to two different routes to explore the museum; one going to the room of the mountain and the other going to the room of the rivers

E: At the End of Jounery, visitors will have the chance to gaze into the space, seeing the full view of the noodle hall. And finally they will see the hanging strings on the north section will form the Chinese Letter “面” from this point of view. End of Jounery, back to **S**.



Route A - Jounery to the North

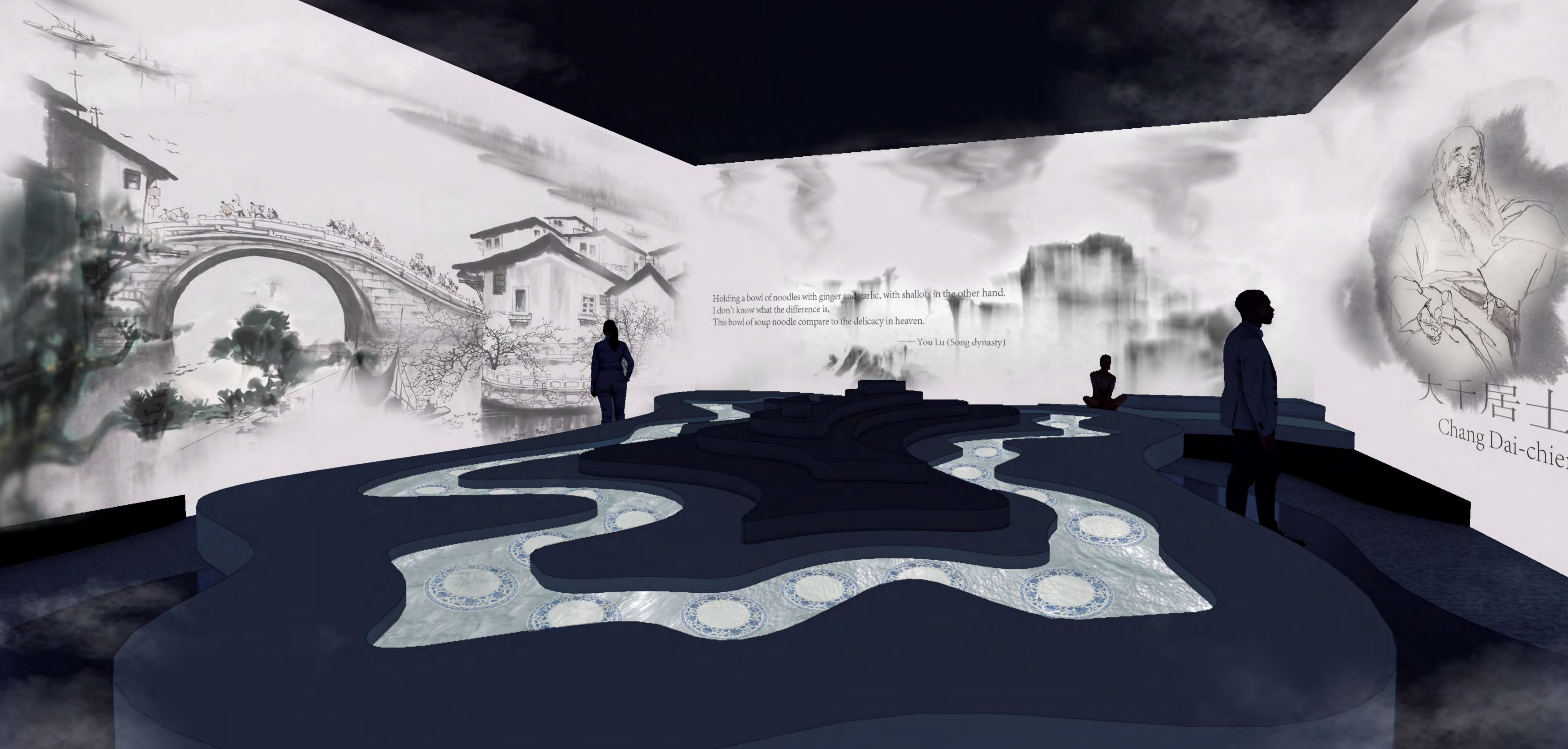
A-1: Reaching into the mountain's room, visitors will enter a bright room with rammed earth walls. People will learn about the noodle making tools and make their own "saozi" and "Chili oil" throughout using the ingredients hanging in this space.

A-2: After the room of Mountain, visitors will enter the north main noodle hall. In this half open space people will experience more natural lighting shooting through the hanging strings. Creating interesting shadow works. People will get complete their noodles in this area and will be sitting on the cave structure to enjoy their noodles while gazing into the space.

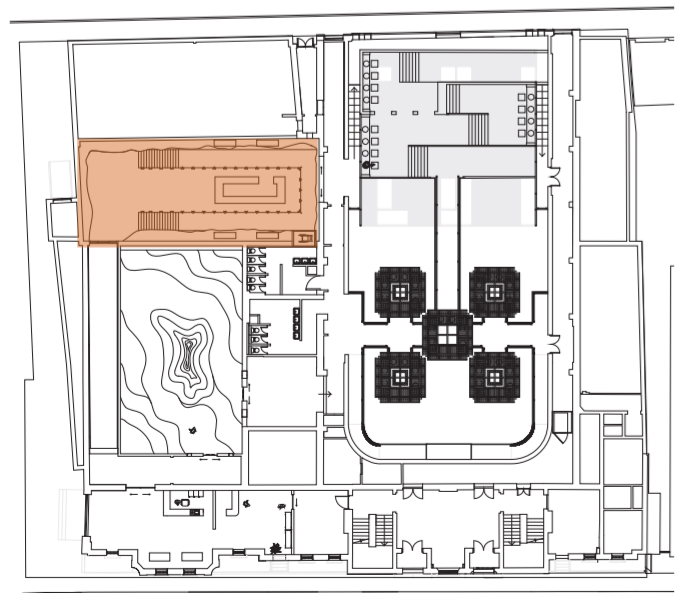
Route B - Jounery to the South

B-1: Stepping into the rivers' room, visitors will enter a dim room set with interactive projections. People will learn about the toppings of southern noodles by interacting with the "Flowing table" in the middle of the room. Visitors will also learn about a different soup and noodle making in contrast to nothern culture.

B-2: After the room of River, visitors will enter the south main noodle hall. Different to the northern area there will be 4 floating pavilion forming this eating space. Each visitors will get their noodles first on the way into this space, they will be choosing their toppings from the the table in the pavilion after they sit down into them.



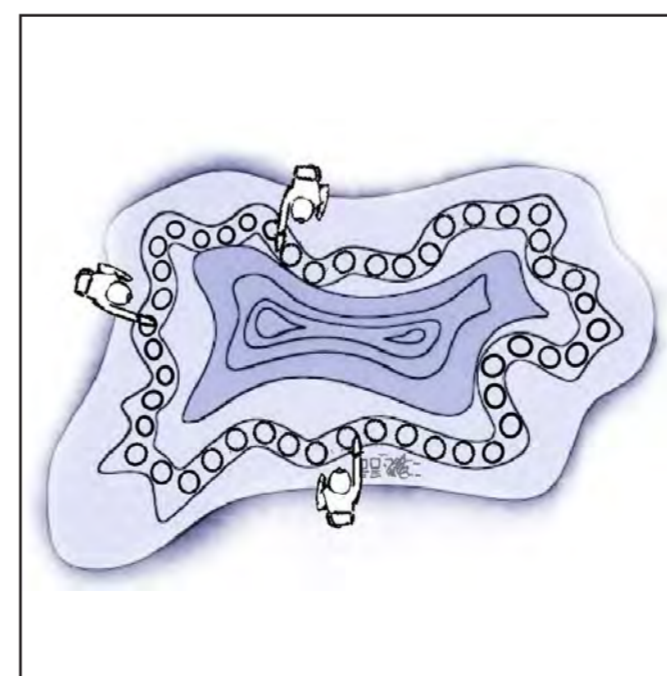
Room of the Water



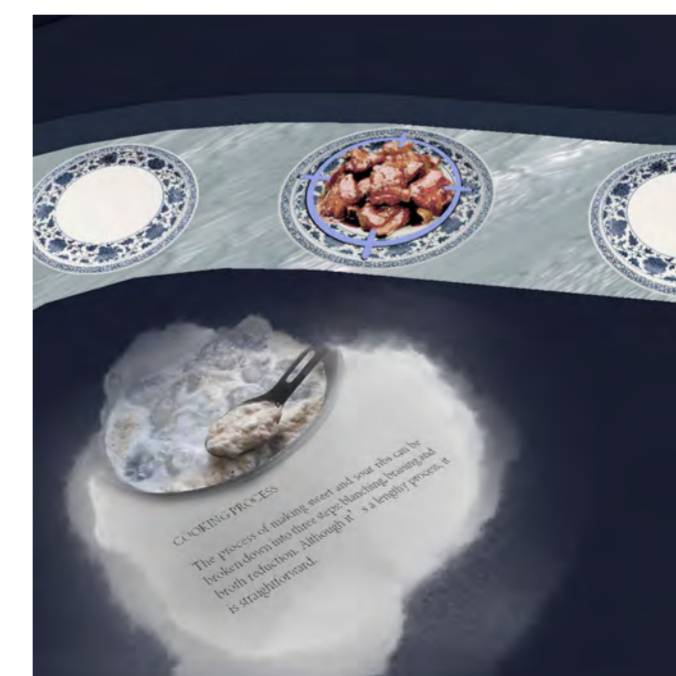
Spatial Meaning: Immersive Interactive Space motif to Jiangnan water town

Display Content: Southern Noodle Toppings, Food and Culture and Art

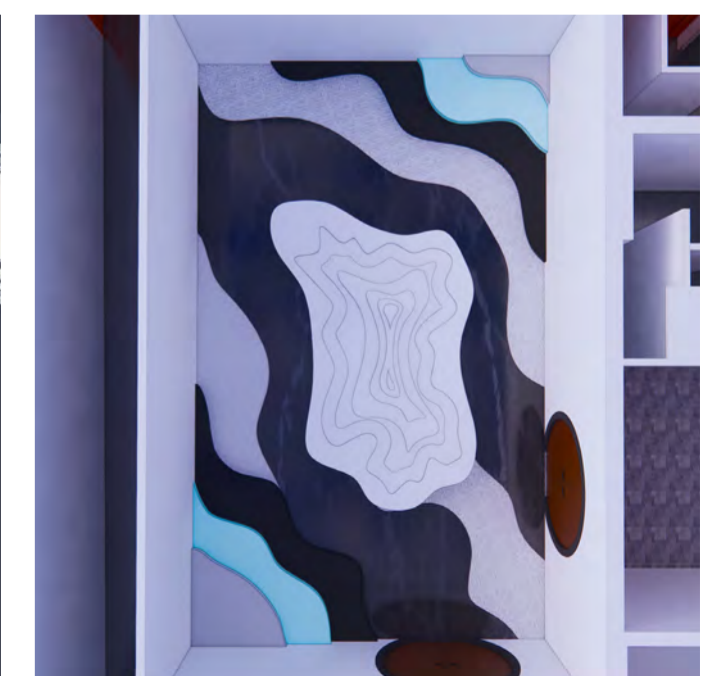
This is a dark space used as an immersive interactive exhibition space, based on the idea of Southern China's water towns, the water wave pattern on the floor is a recreation of the water's image, also a study to the landscape gardening design. The interactive table in the middle of the room presents different toppings by projections, people can put their hands onto the table to check out more information and recipe of the dishes. Videos of the water town wash painting will be project on the walls as a factor of the water town atmosphere, information of the winding stream party and culture related artworks, poems of food will be presented on the walls through projections



Drawing Idea of the projection table



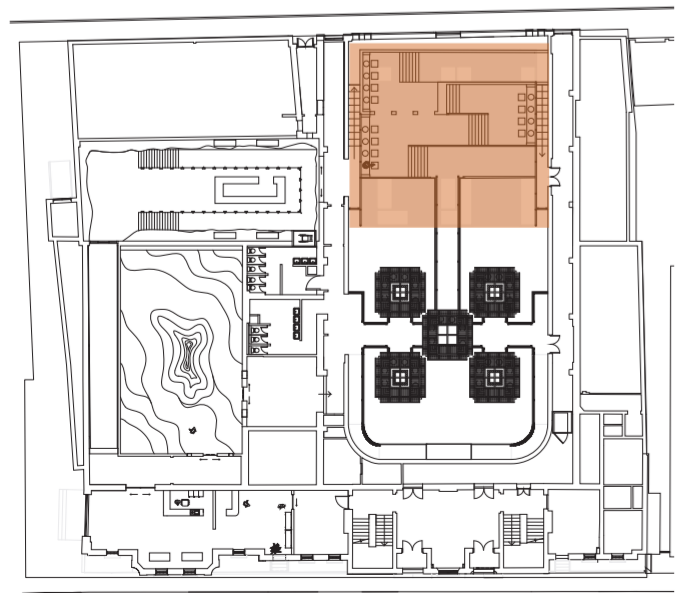
Recipe display on the projection table when dish selected



A top view into the flooring patterns and materials.



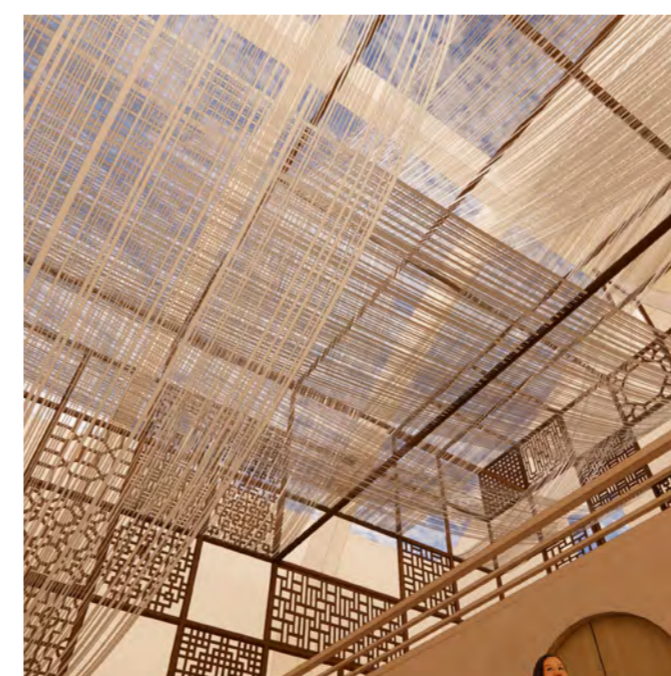
Hall of the Mountain - Stone Hill



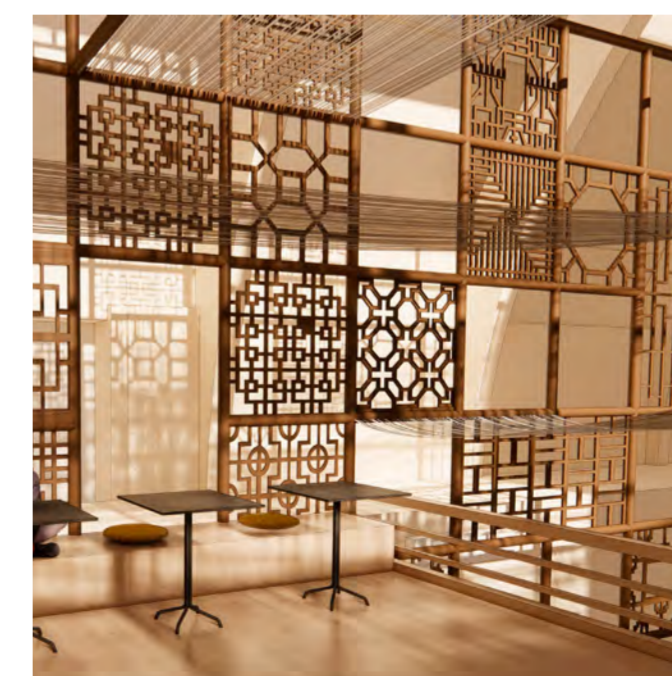
Spatial Meaning: Food hall based on the idea of Hanging noodles and traditional Chinese cave houses

Content: Relaxing space + food experience

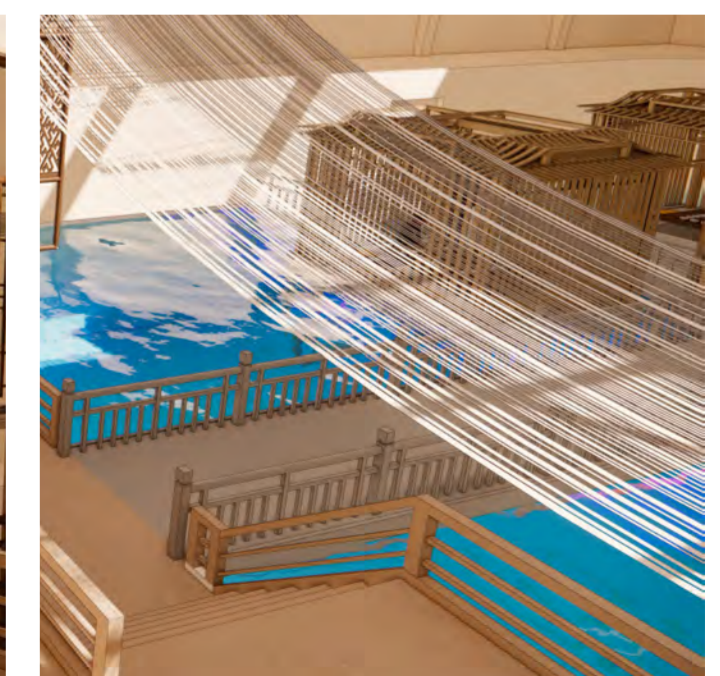
The design of the main space is based on the vague impression of the original exhibition area, more inclined to substitute a little regional characteristics of the architectural style. In this case I studied about the cave houses in northern China, adding in the element of flower windows as well to make the space's lighting more interesting. The final visual looks great when the shadows "reflect" in the space. The seating were developed from the traditional heatable adobe platform in Chinese cave houses.



Hanging fabric pieces as a recreation to the hanging noodles, they create interesting lighting in the space.



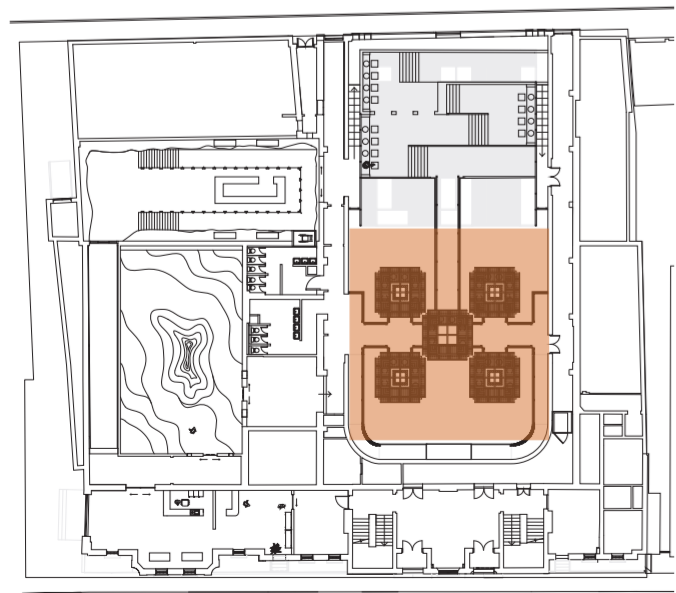
Flower windows worked well with the light and shadows, adding another layer to the play of light and shadows.



A view into the Southern Hall, a bridge is added for additional purpose, please check design report for detail.



Hall of the River - Water Pavilions



Spatial Meaning: Food hall based on the idea of Water Pavilions and Wu-peng Boats

Content: Relaxing space + food experience

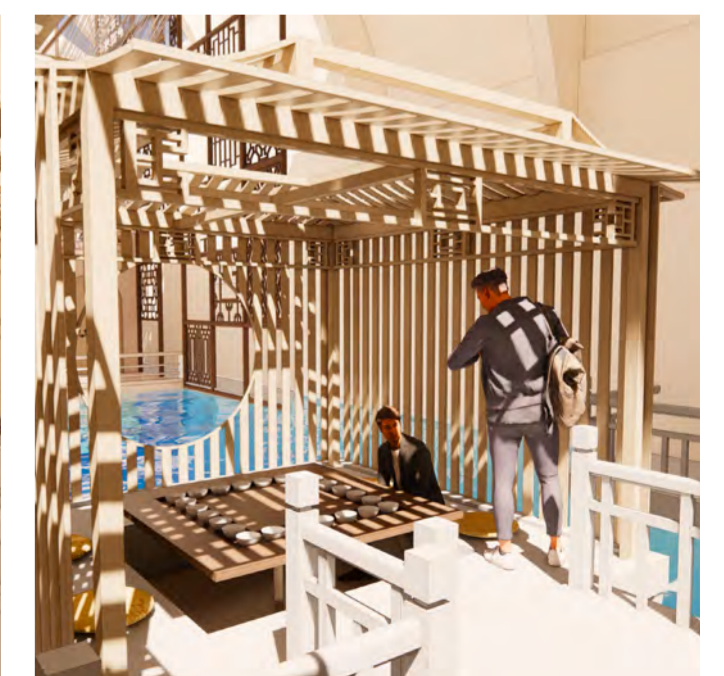
Same as the mountains' hall, this part was the final destination for people who took the rivers' route. The pavilions were developed to fit in 6 people, they will carry their noodles into this space, and use the topping dishes to complete their noodles. Considering the safety, bridges were added into the space and numbers of pavilion changed from 4 to 5 (4 is a bad sign of number in Chinese culture! But 5 is relatively an extreme lucky number). The middle pavilion is used to connect spaces, also it can be used as a sitting space for people enjoying the space.



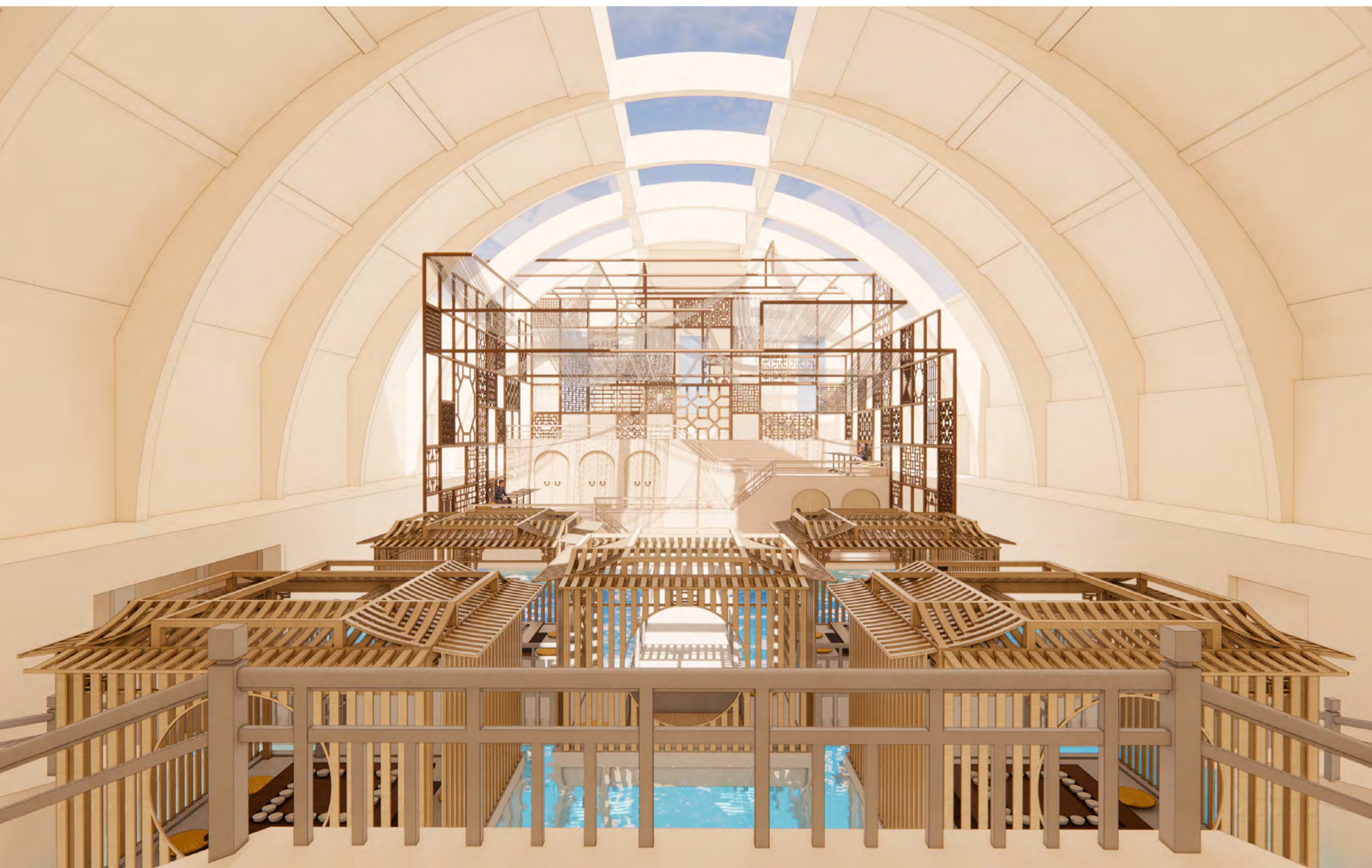
Moon windows added to the pavilions have made the space to have more Chinese garden atmosphere.



Middle pavilion connecting other spaces



Lighting in the space can get very interesting during a certain of time



END