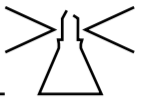


MATERIALITY & SUSTAINABILITY

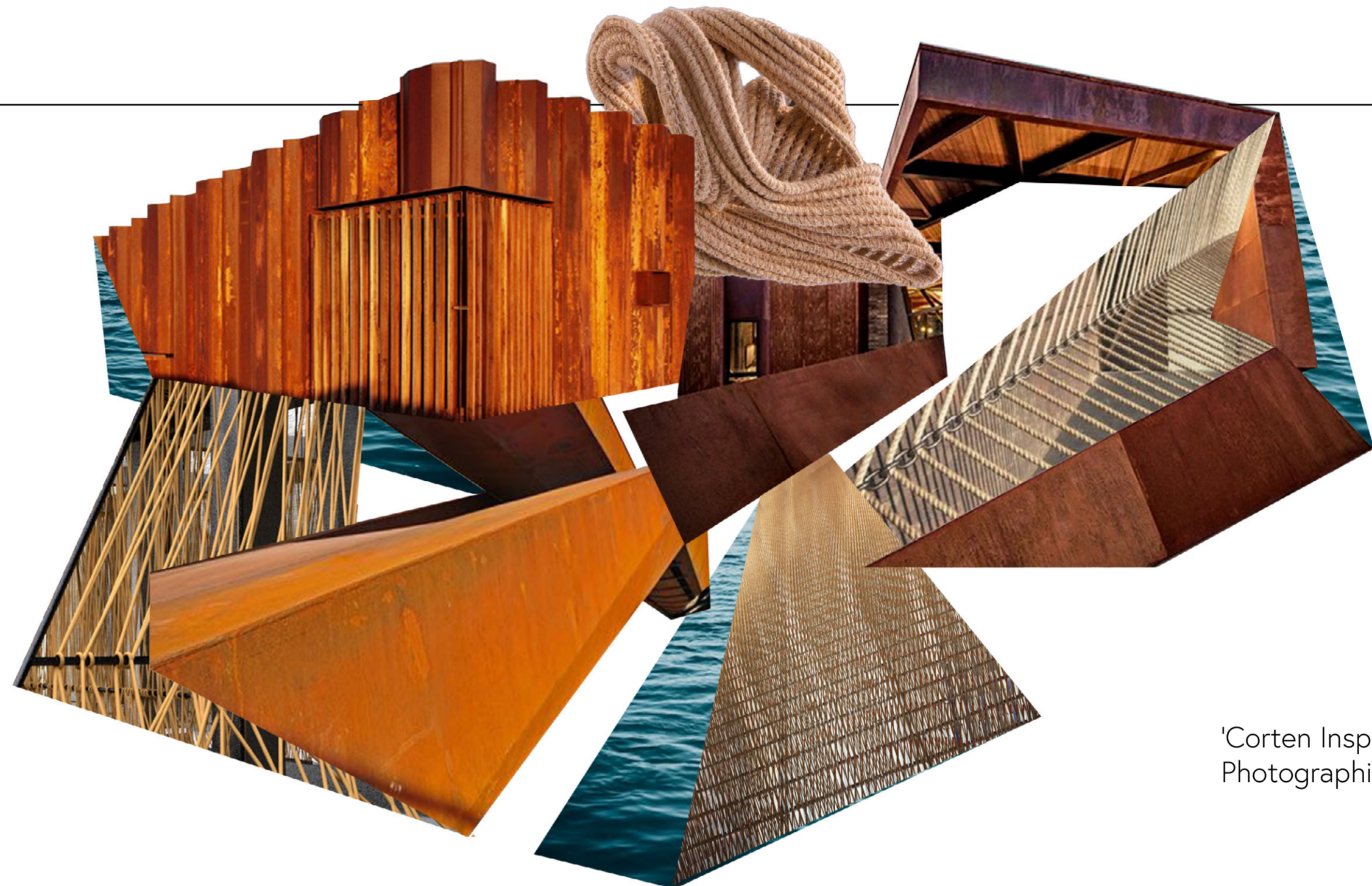


The material choices for the project take their inspiration from the location of the site, heritage and impacts of weather and time. From the corten steel, found across the site, to the softer rope and timber materials that pay homage to the chain stores working history. Steel elements would be water-jet cut and bolted together with spacers to aid disassembly.

'Architecture must change with the climate, and change now, in order for humanity to survive, and hopefully thrive.'

Ned Cramer

I undertook material tests using mild steel, alternating combinations of vinegar and bleach solution to emulate the rusting process. I then considered different ways to use mild steel in my proposal playing around with mesh, tape and suspension.



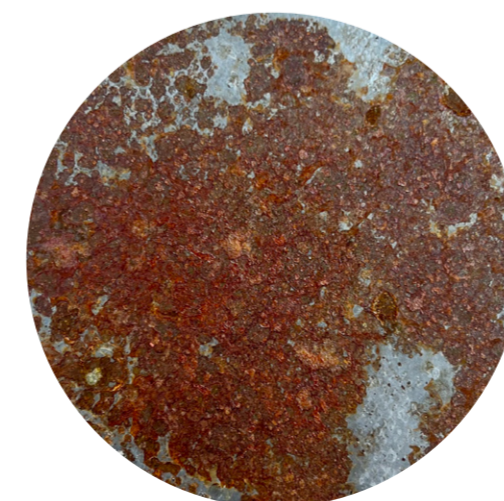
'Corten Inspiration'
Photographic Collage



Vinegar solution



Bleach Solution



Aluminium Mesh



Treated vs. Untreated

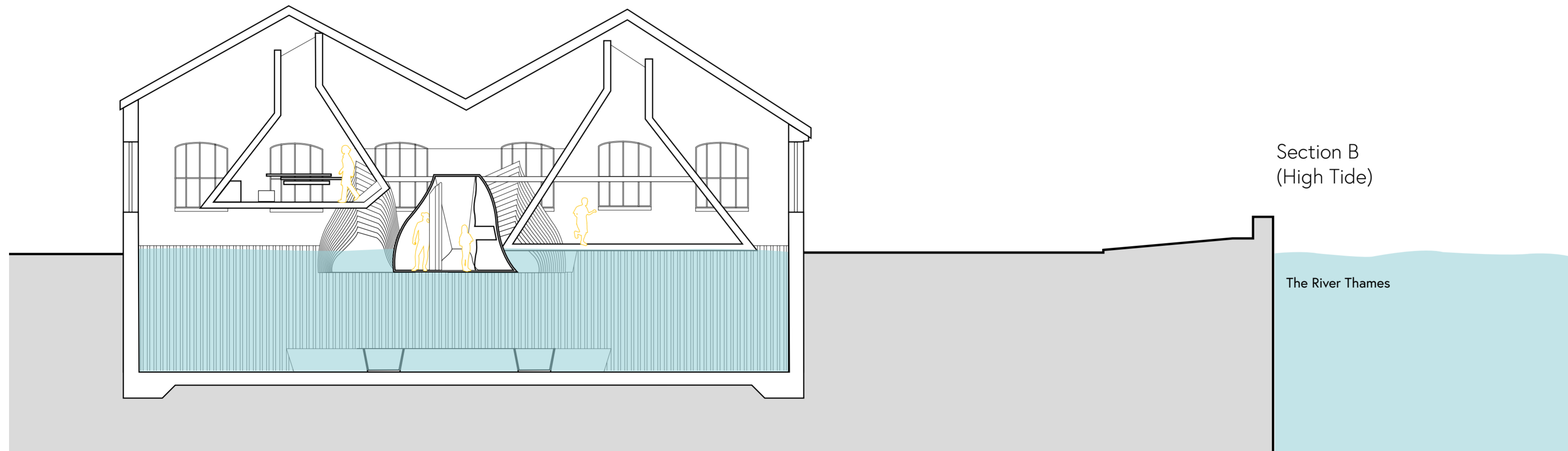
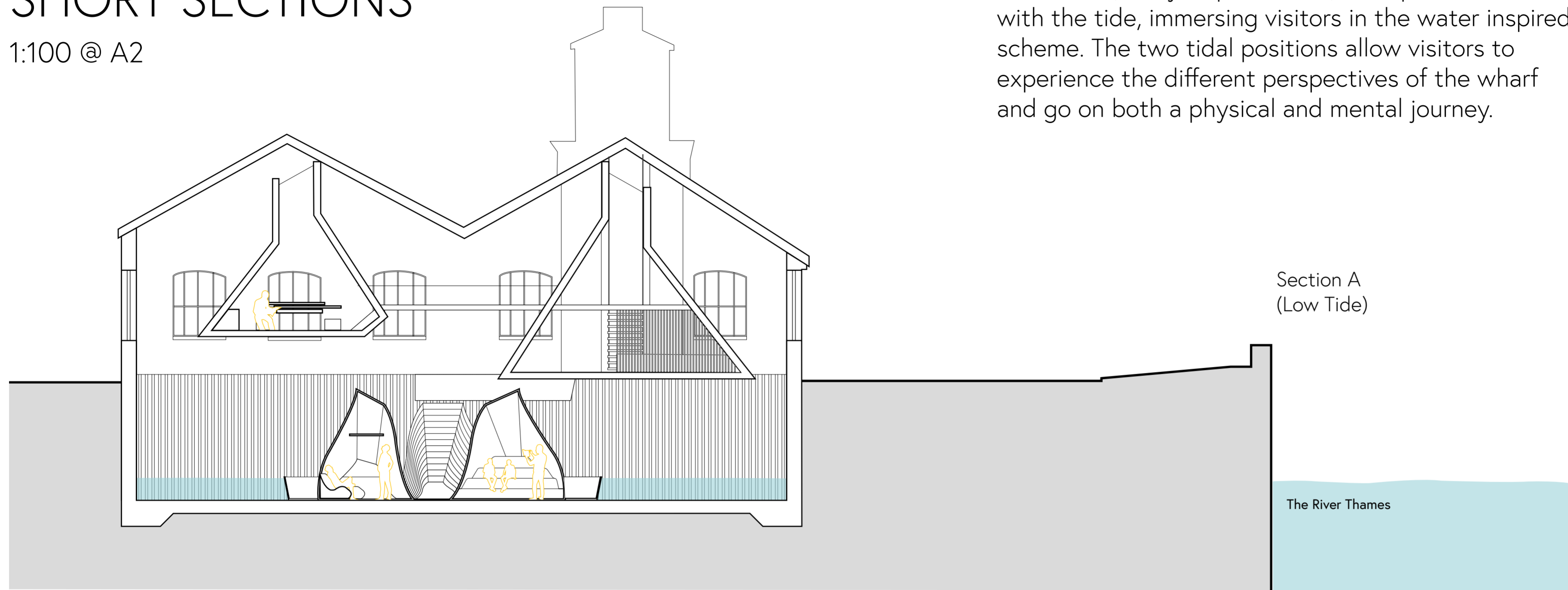
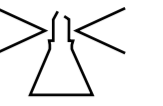


Suspended in Solution

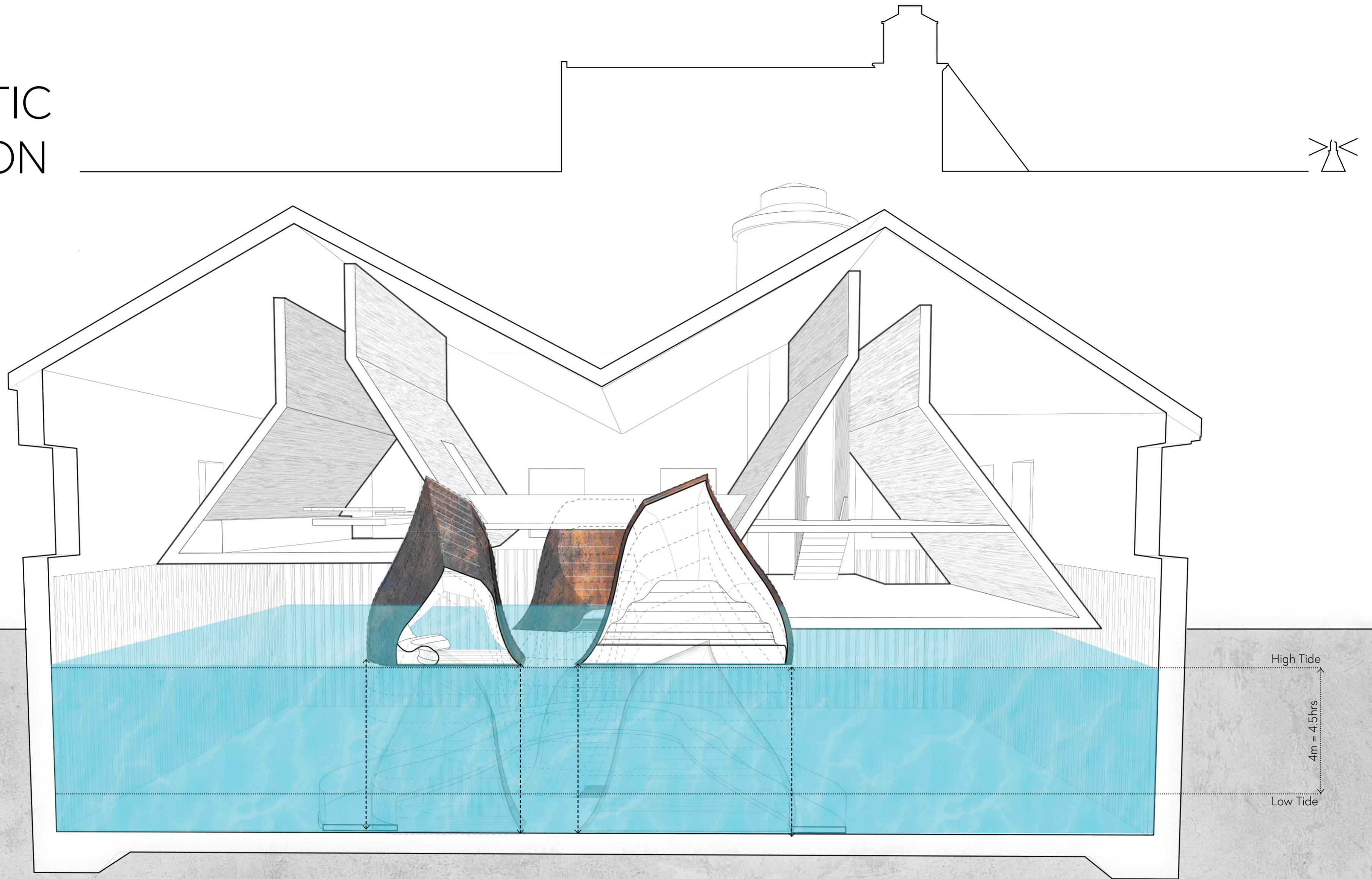
SHORT SECTIONS

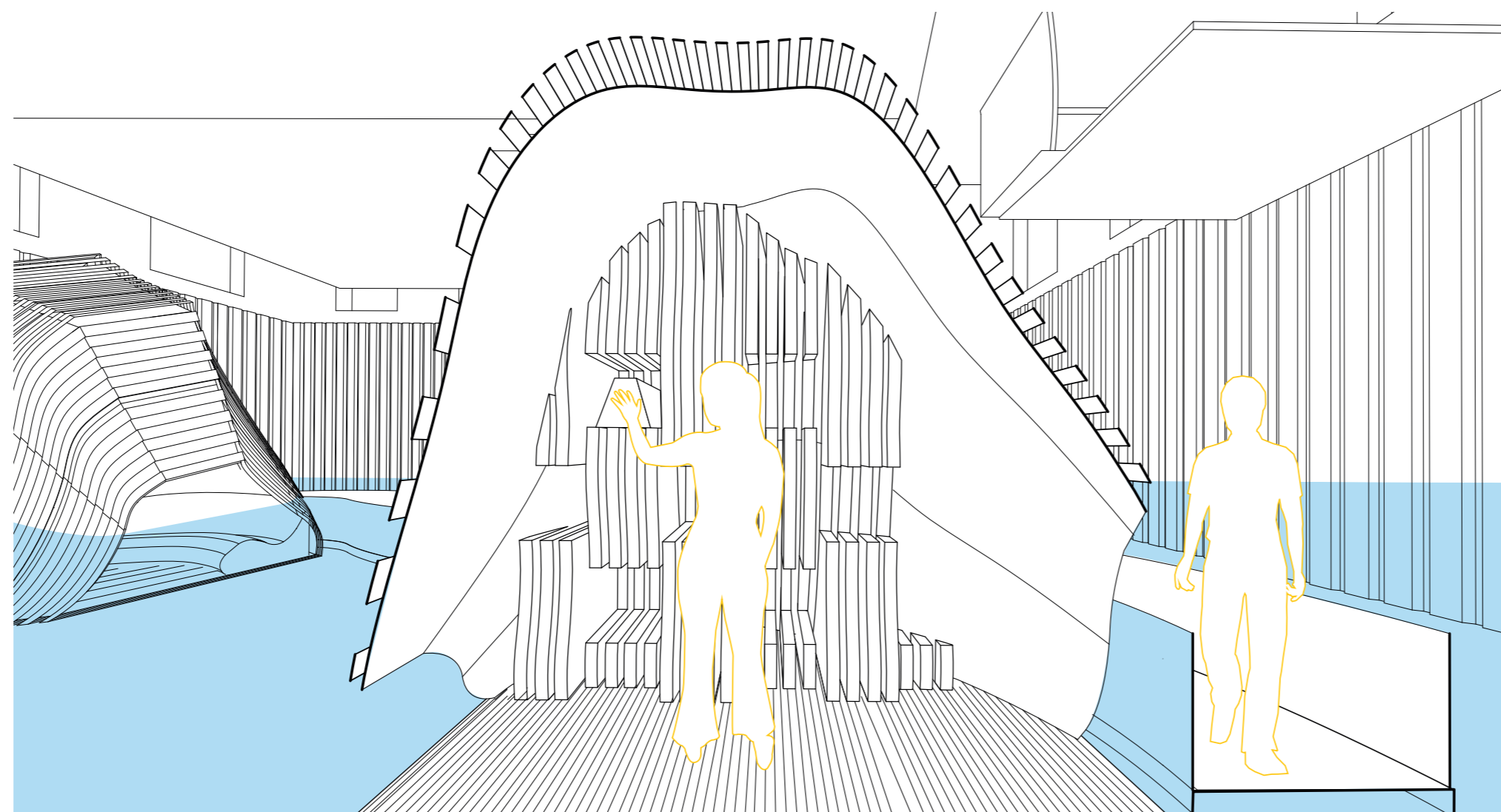
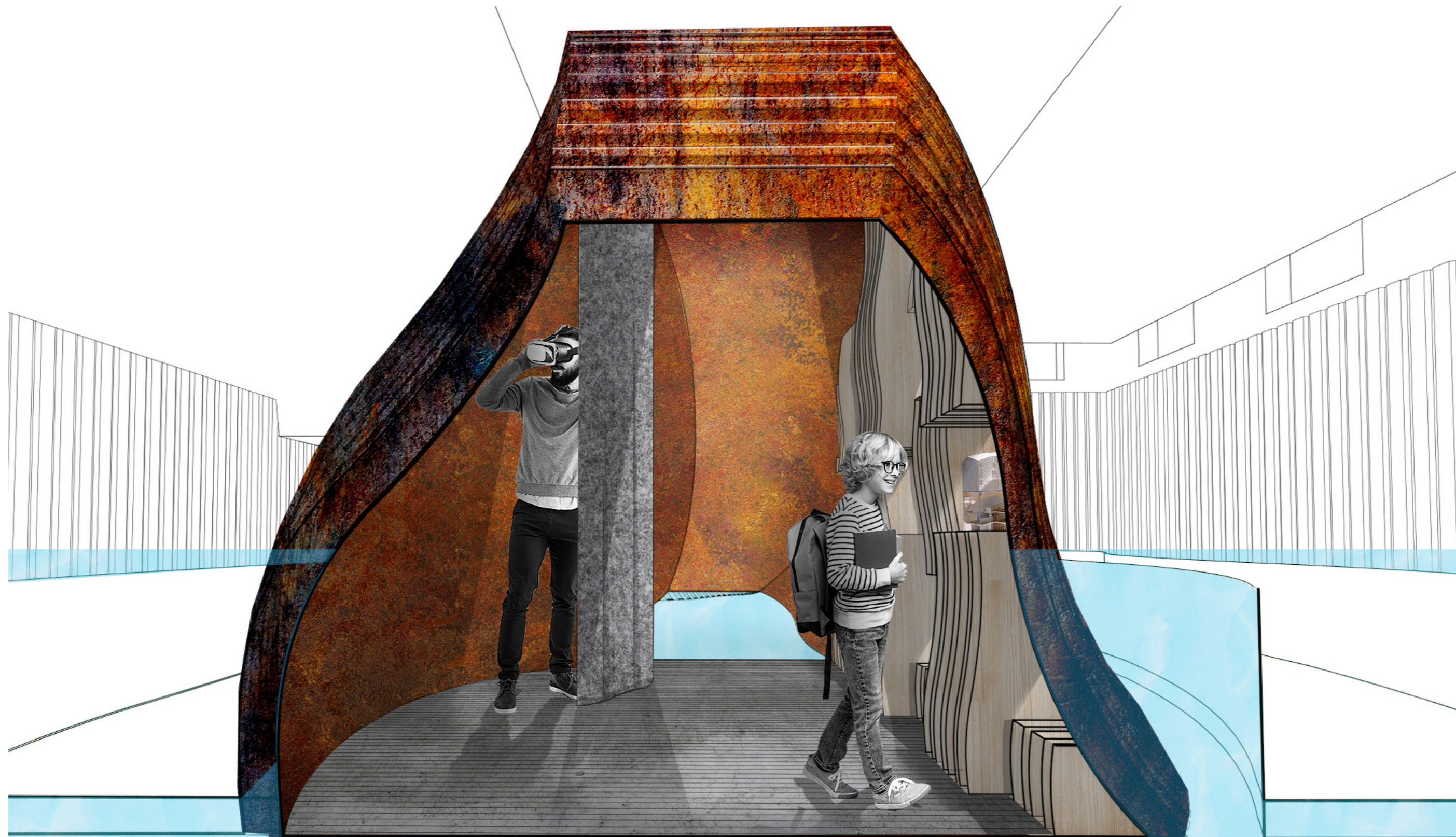
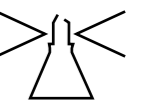
1:100 @ A2

The kinetic, buoy inspired Pods, rise up and down with the tide, immersing visitors in the water inspired scheme. The two tidal positions allow visitors to experience the different perspectives of the wharf and go on both a physical and mental journey.



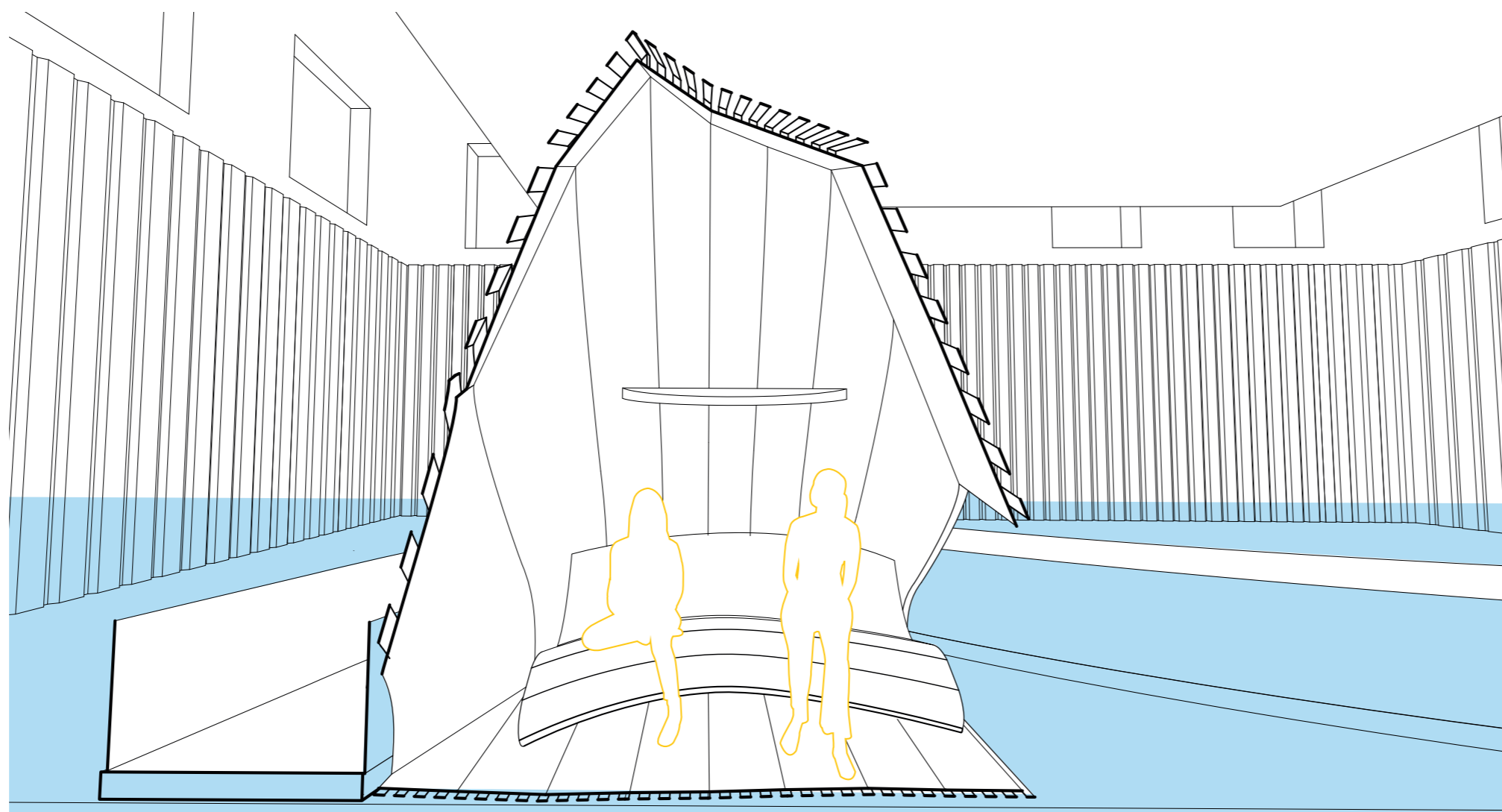
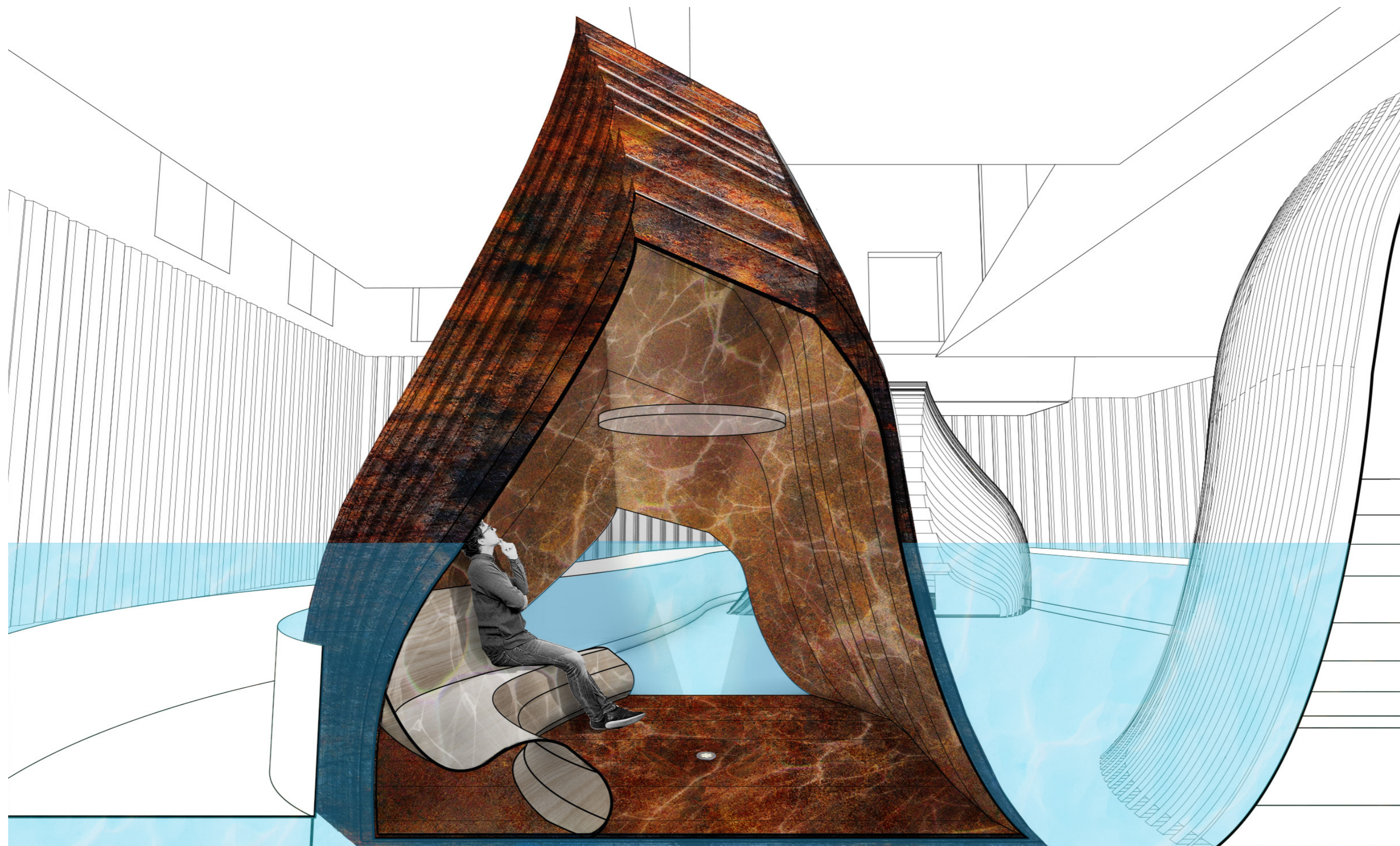
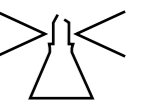
THE CAUSTIC BEACON





Presenting solutions in an interactive and engaging way, our Inspiration Pod provides a physical and digital platform to convey concept ideas and solutions. Structural facets provide surfaces on which to display architectural models, whilst the VR booth enables real time visualisations of conceptual ideas.

BE IMMERSED



Our Immersion Pod takes its structural inspiration from the historical timber and steel buoys found across the site.

Within the space sits a flowing bench, providing ergonomic comfort as its occupant is immersed into the watery experience. A water filled dish hangs above an up-lit light source, and as the Pod responds to tidal movements, caustic patterns fall on to its wall and ceiling surfaces.