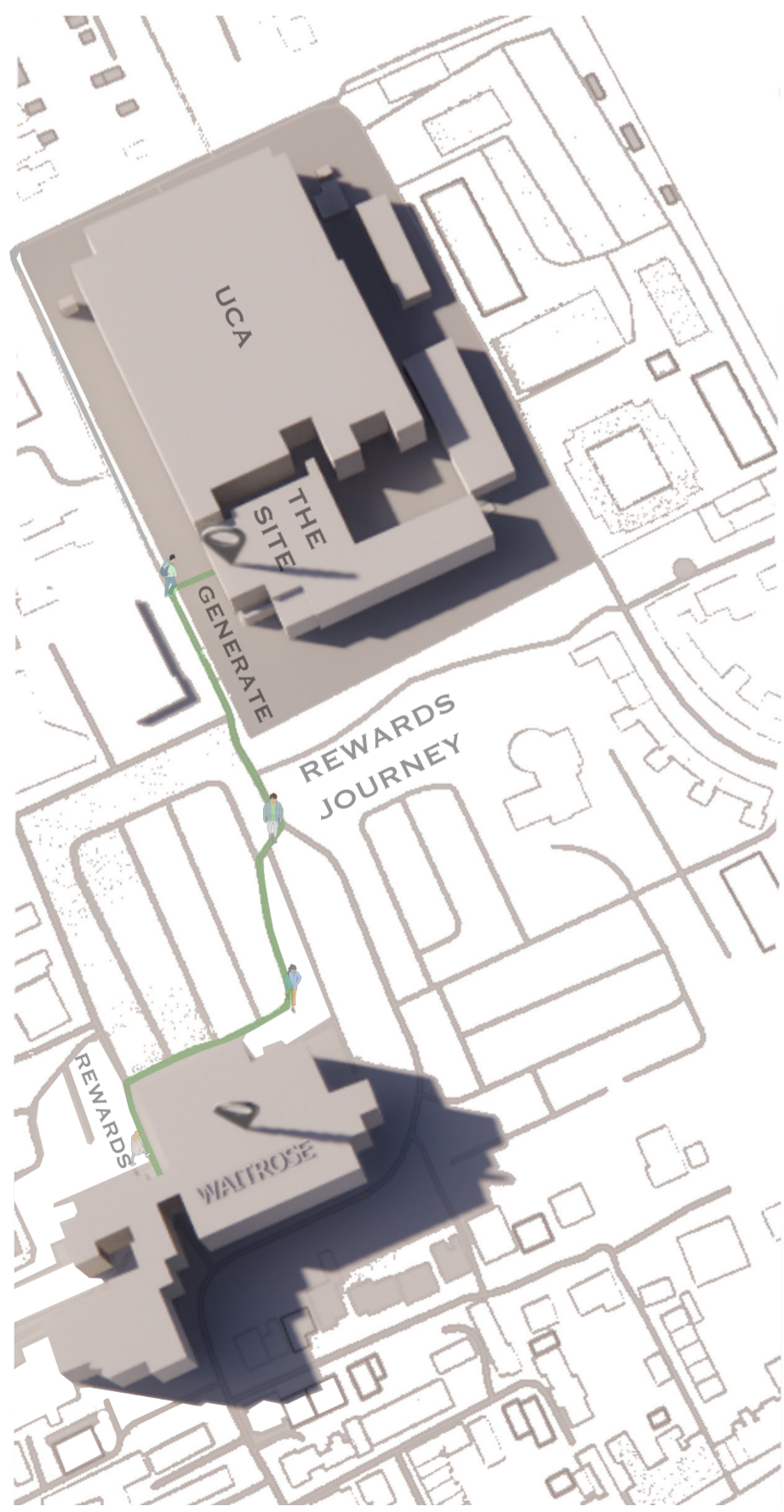


WAITROSE & PARTNERS IS PROPOSING TO DEVELOP A DESIGN CALLED 'FIT FOR FUTURE' WHICH WILL ENCOURAGE YOUNG PEOPLE TO INCREASE THEIR PHYSICAL HEALTH, MENTAL HEALTH AND 'WEALTH'. THE SCHEME WILL PROVIDE STUDENTS WITH FREE FITNESS OPPORTUNITIES SUCH AS INDOOR ROCK CLIMBING, SPIN AND RUNNING CLASSES. THESE ACTIVITIES WILL ALL GENERATE RENEWABLE ENERGY THAT WILL THEN POWER THE BUILDING AND A LOCAL WAITROSE STORE. ALL POWER THE USER GENERATES WILL BE LOGGED ONTO THEIR MEMBERSHIP AND BE CONVERTED INTO MONEY OFF THEIR SHOP AT WAITROSE. OVERALL BENEFITING YOUNG PEOPLE WITH BETTER PHYSICAL AND MENTAL HEALTH, AND HELPING WITH COSTS OF LIVING. THIS INVESTMENT BY WAITROSE & PARTNERS WILL BE A SERIES OF 'TEST' SITES THAT WILL FUEL THEIR AIM TO BE MORE SUSTAINABLE ACROSS THEIR BRAND.

## SITE

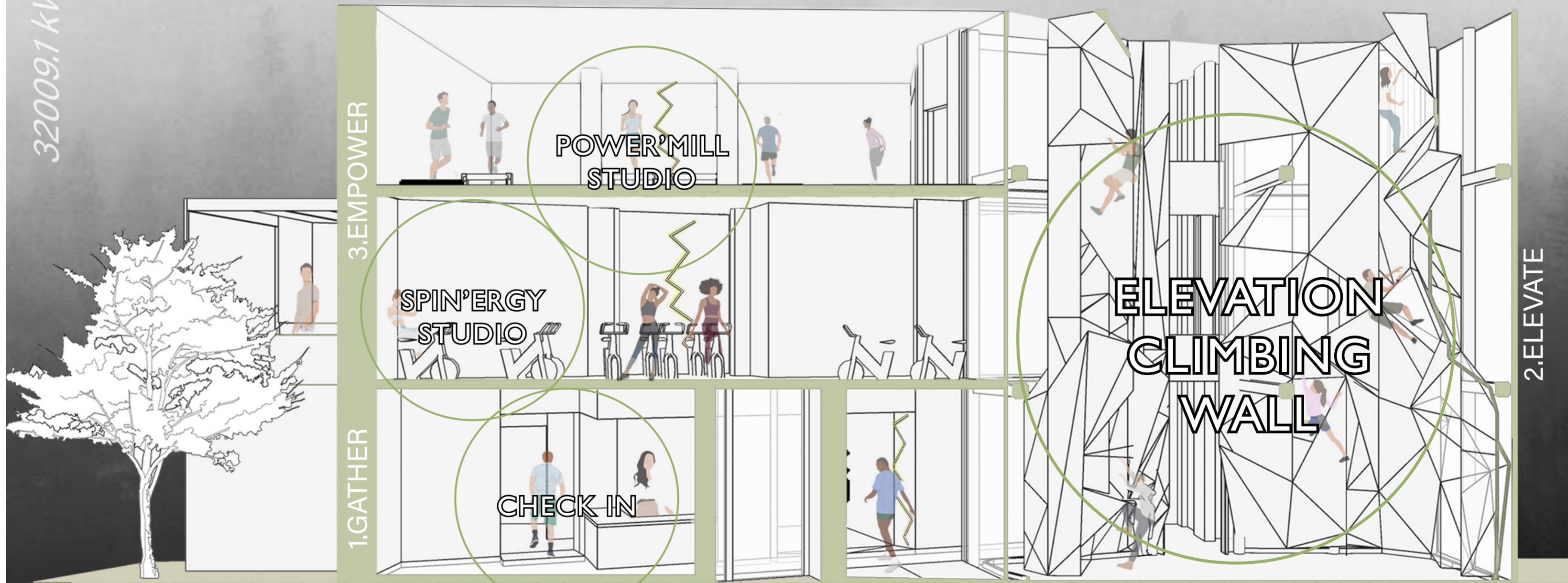
THE NEW PROPOSED USE FOR THE SITE IS INSPIRED BY THE BUILDINGS CURRENT NEED FOR TEMPERATURE AND INTERNAL CLIMATE CONTROL. INSTEAD THE BUILDING WOULD NOW GENERATE POWER USING KINETIC FITNESS EQUIPMENT, SMART FLOORS AND SOLAR PANELS.



# FIT FOR FUTURE

powering WAITROSE  
& PARTNERS

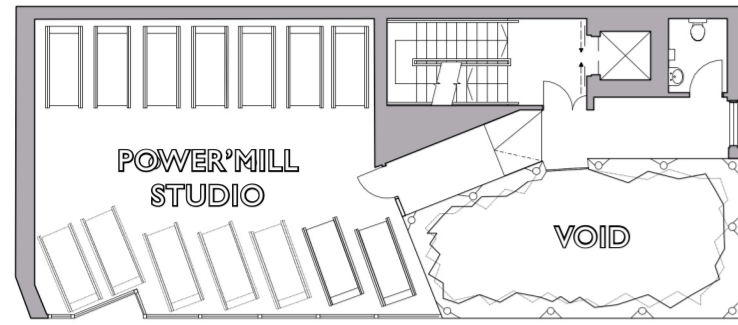
32009.1 kWh



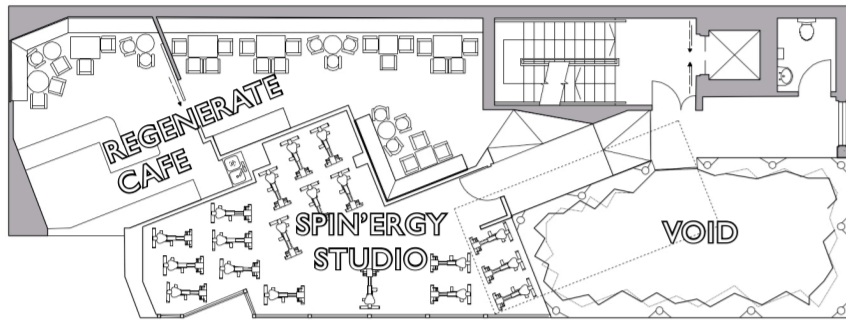
# FLOORPLANS

# USERS

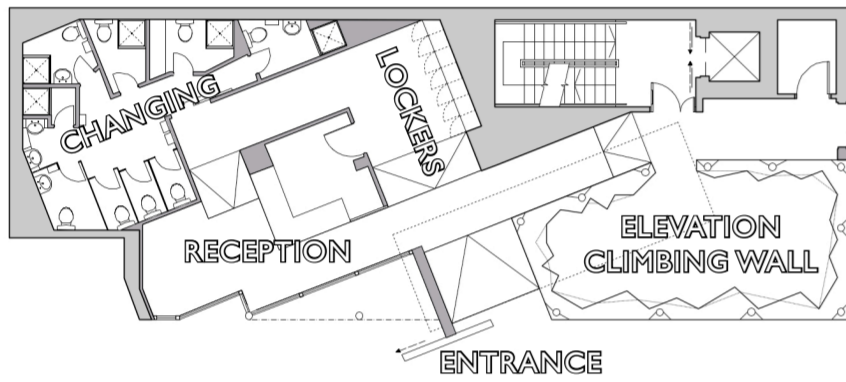
# ENTRANCE



SECOND



FIRST



GROUND

TARGET USERS ARE YOUNG PEOPLE THAT ARE LOOKING FOR A PLACE TO SOCIALISE, HAVE A BREAK & LOOK AFTER THE EARTH.

THE SOCIALIZER



THE ENVIRONMENTALIST

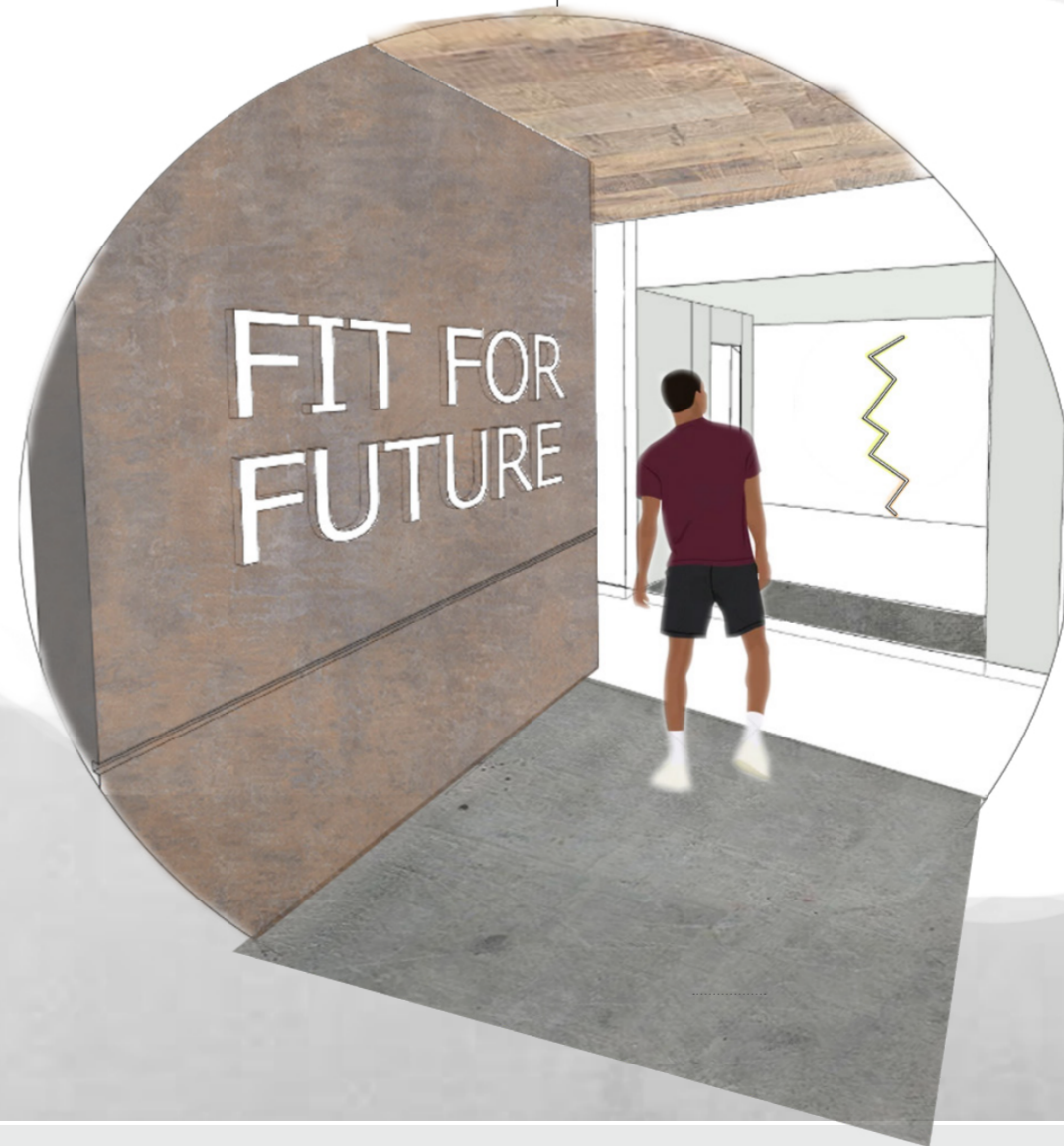
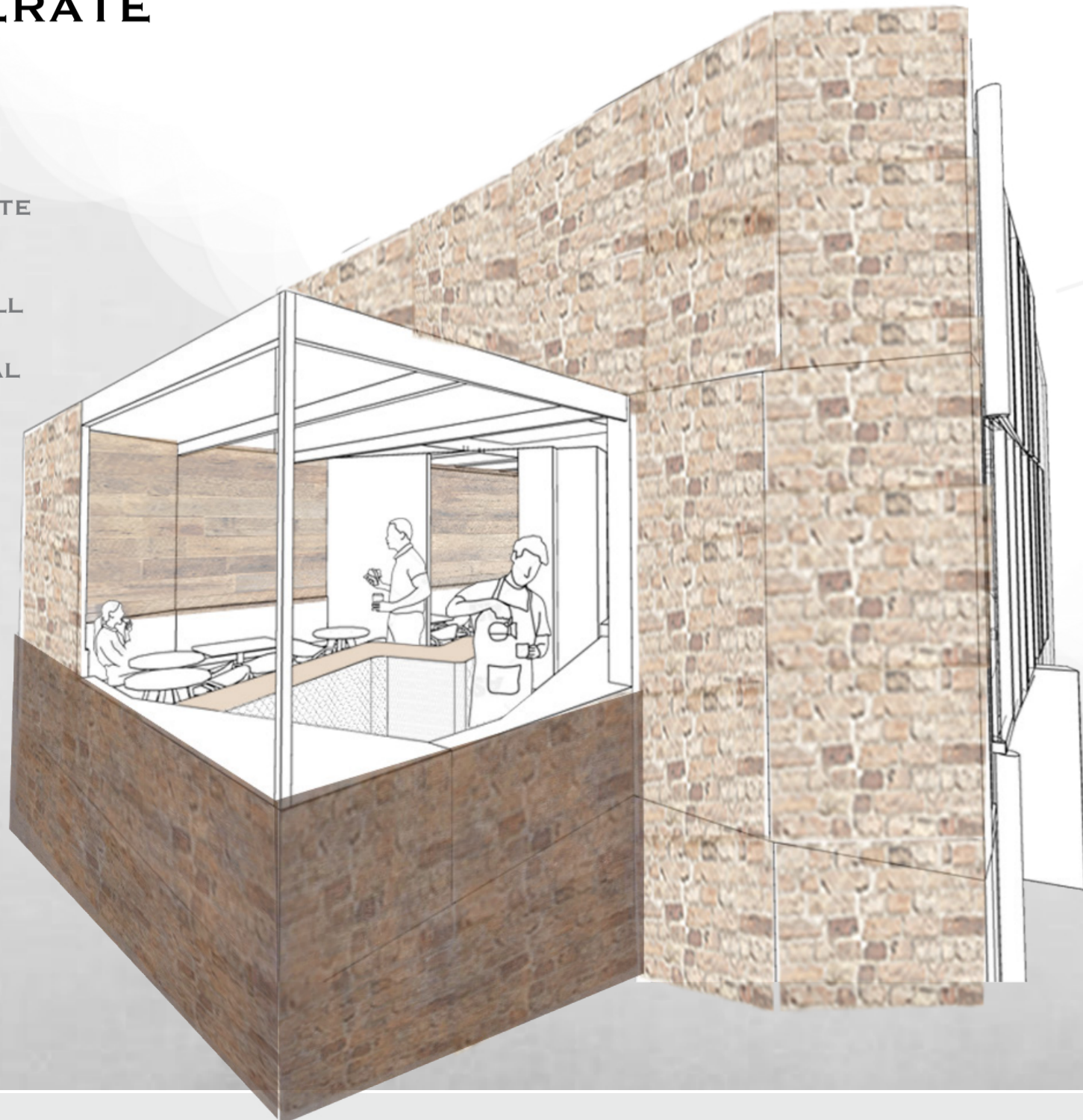


THE WORKAHOLIC



# REGENERATE CAFE

'THE REGENERATE CAFE' OFFERS ALFRESCO SEATING AS WELL AS INDOOR TO CREATE A SOCIAL SPACE FOR COMMUNITY.



WHEN THE USER APPROACHES THE ENTRANCE THEY WILL SEE PEOPLE CLIMBING THE GLASS CLIMBING WALL AND THE GENERATION OF ENERGY WHEN USERS DROP BACK DOWN THE WALL. AS THEY ENTER THEY WILL BE GREETED WITH RECEPTION TO THE LEFT AND ACCESS TO THE CLIMBING WALL TO THEIR RIGHT.

00994440002

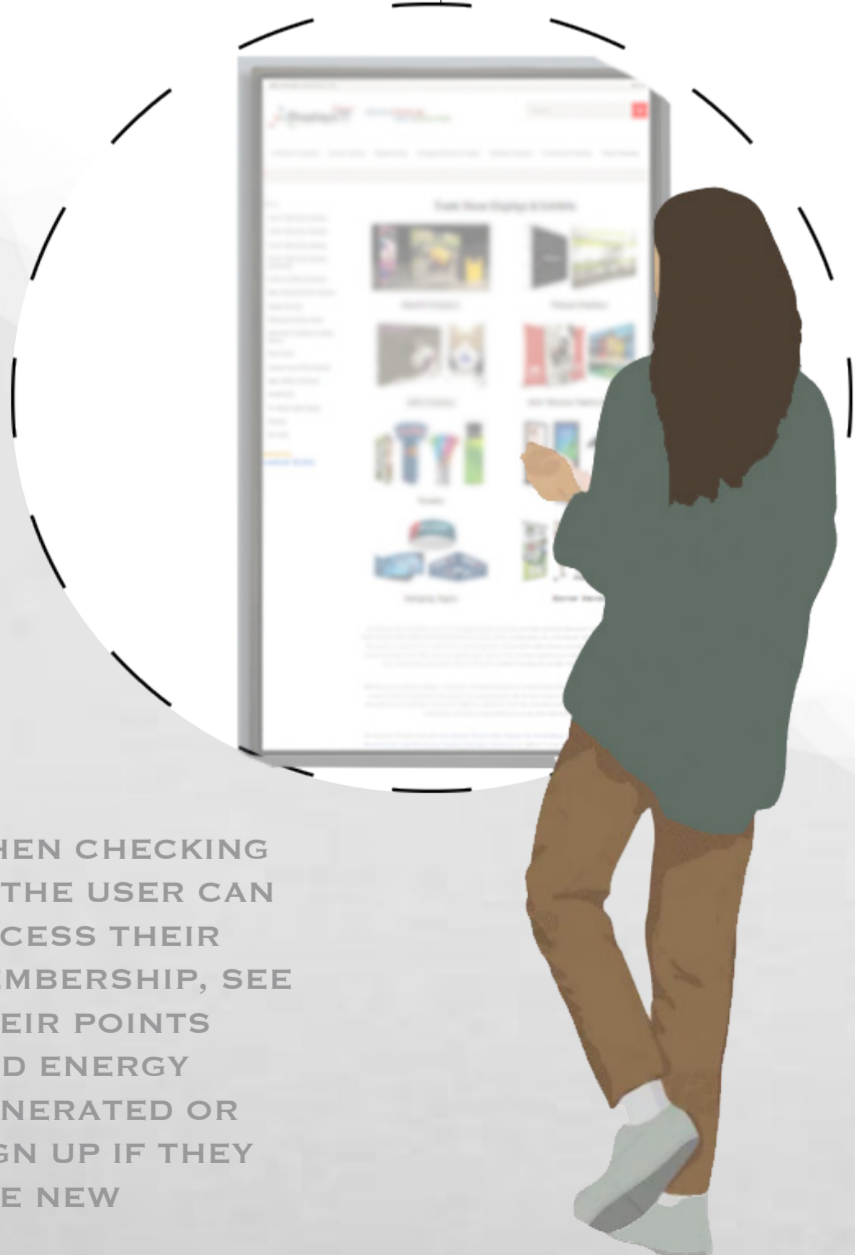
09993330099440002299999001

**CHECK IN**

HERE USERS CAN EITHER GO TO THE RECEPTION DESK OR SELF CHECK IN KIOSK ON ARRIVAL. THEN DOWN THE RAMP TO THE CHANGING ROOMS.



**LOCKERS**

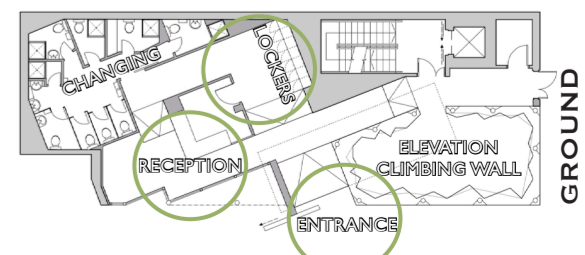


WHEN CHECKING IN THE USER CAN ACCESS THEIR MEMBERSHIP, SEE THEIR POINTS AND ENERGY GENERATED OR SIGN UP IF THEY ARE NEW

**THE FLUCTUATOR**

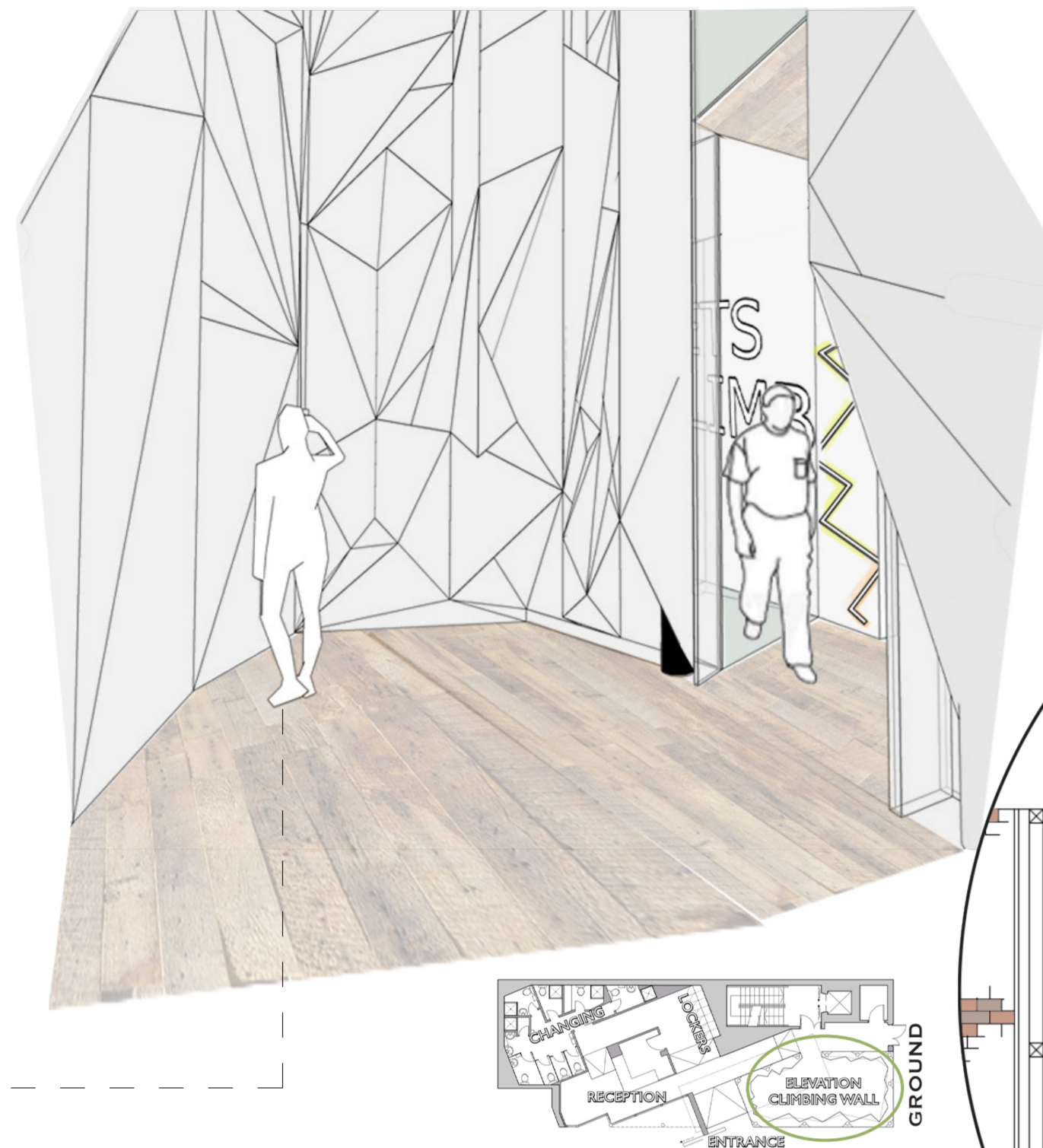
THE FLUCTUATOR IS A POWER LEVEL DEVICE THAT WILL LIGHT UP HIGHER AND HIGHER DEPENDANT ON THE AMOUNT OF ENERGY GENERATED FOR VISUAL PURPOSES.

AFTER THE USER PASSES THE CHANGING ROOM THERE ARE LOCKERS AVAILABLE OR THEY CAN CONTINUE ON TO THE CLIMBING WALL, SPIN'ERGY AND POWER'MILL STUDIO'S.

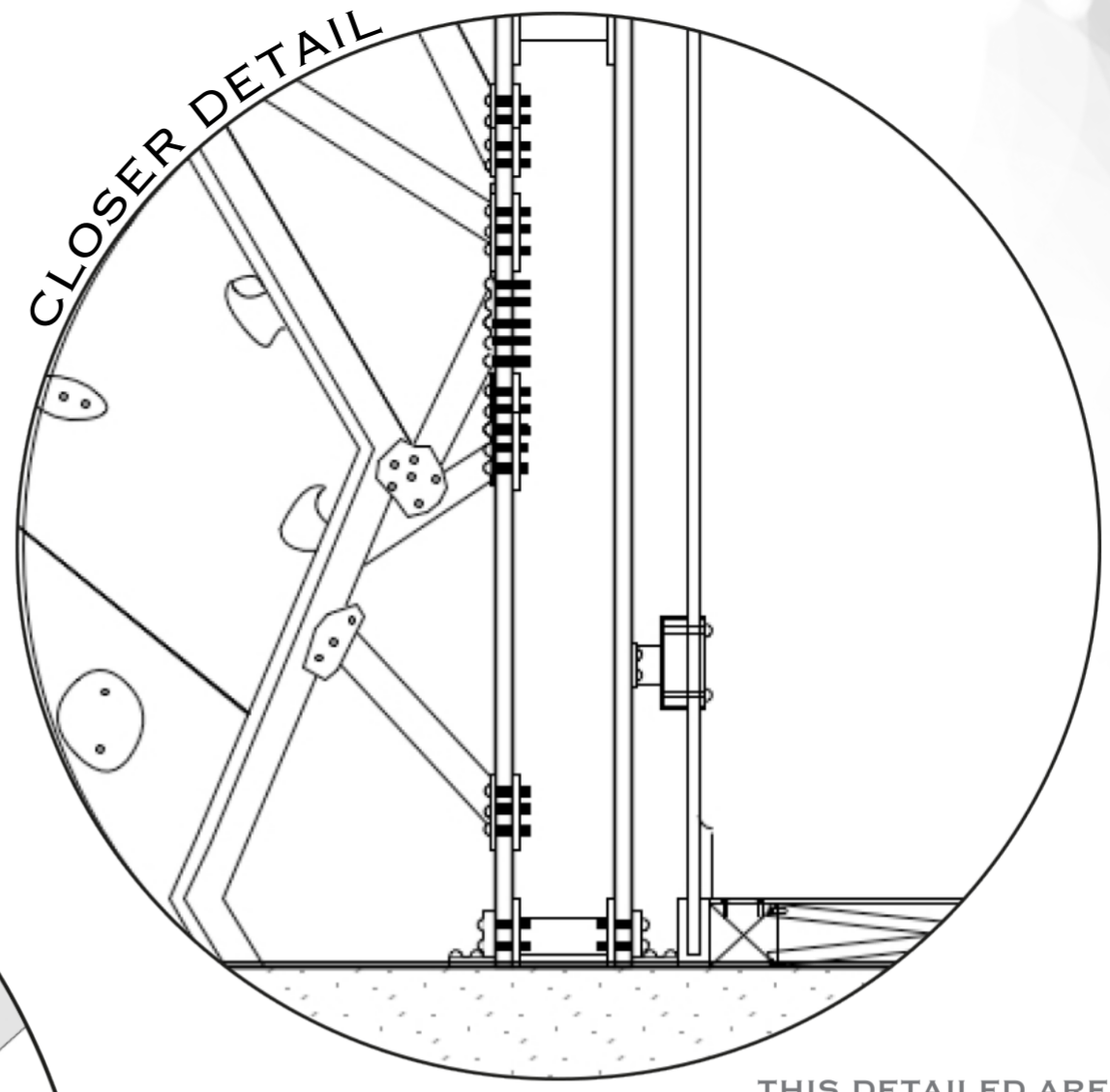


### ELEVATION CLIMBING WALL

310 kW h ⚡



THE USE OF AUTO-BELAY MECHANISMS WILL GENERATE POWER WHEN DROPPING BACK DOWN THE CLIMBING WALL.



THIS DETAILED AREA OF THE FRONT ENTRANCE & CLIMBING WALL CONSISTS OF EXPOSED STRUCTURE OF THE BUILDING AND CLIMBING FRAME. ALONG WITH THE USE OF CLEAR & GREEN TINTED GLASS AGAINST RECLAIMED & RUSTIC MATERIALS SUCH AS OAK, BRICK SLIPS AND WEATHERED STEEL.

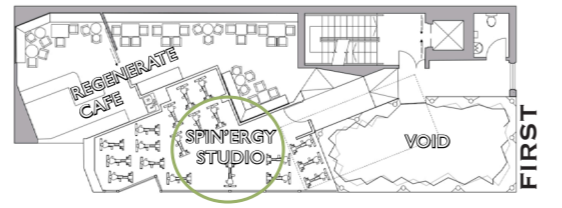


### SPIN'ERGY STUDIO

197.5 kW h ⚡



THIS SPIN'ERGY CLASS CONSISTS OF KINETIC SPIN BIKES THAT WILL GENERATE ENERGY TO POWER THE BUILDING.



### POWER'MILL STUDIO

230 kW h ⚡



THE POWER'MILL STUDIO IS AVAILABLE AS A CLASS OR AN INDIVIDUAL SESSION.



199999001011199990002  
10994400022999990010111999