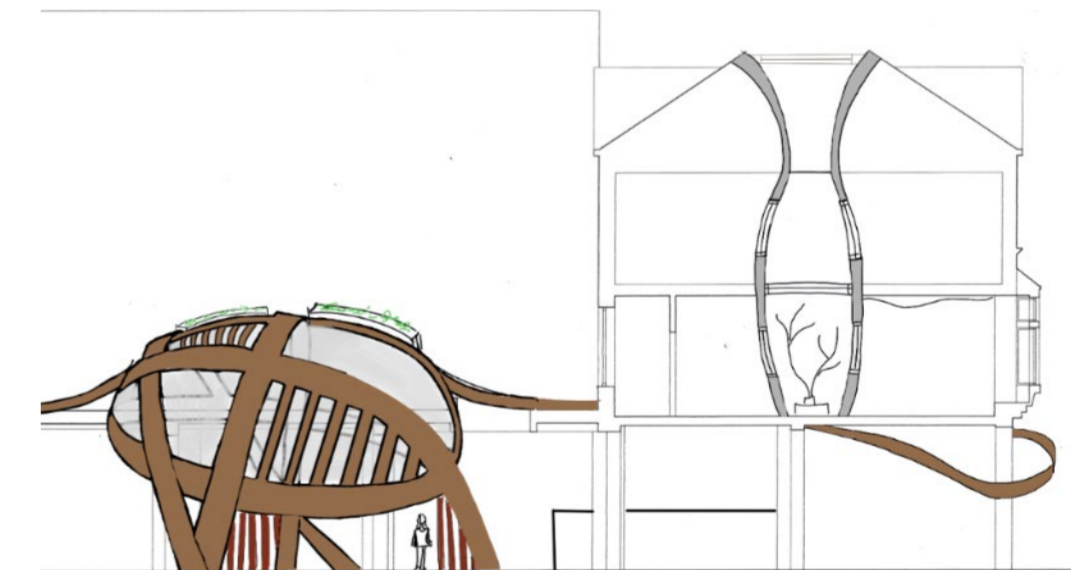
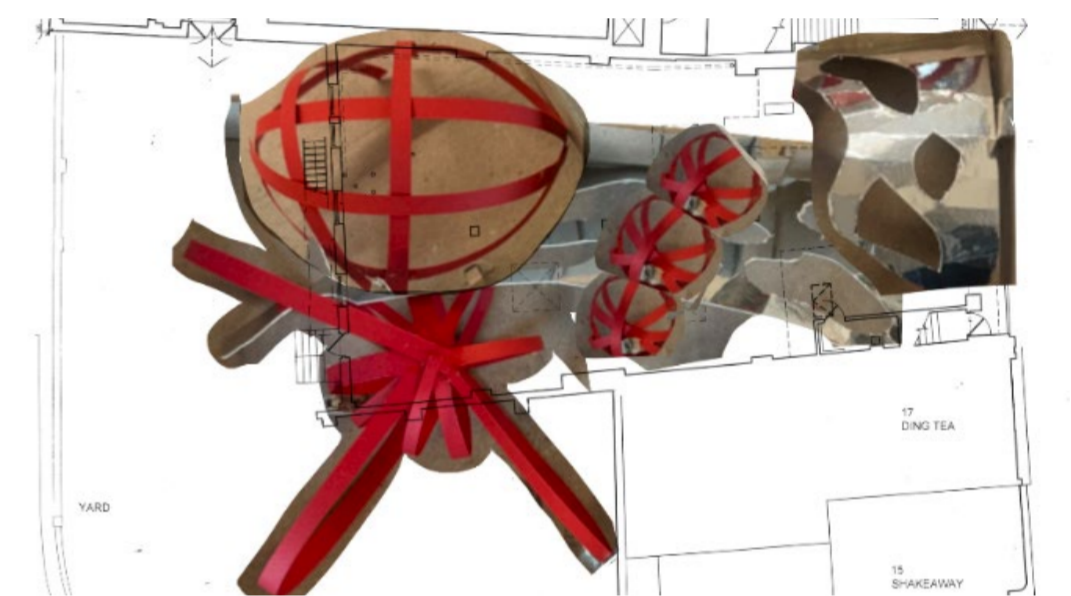
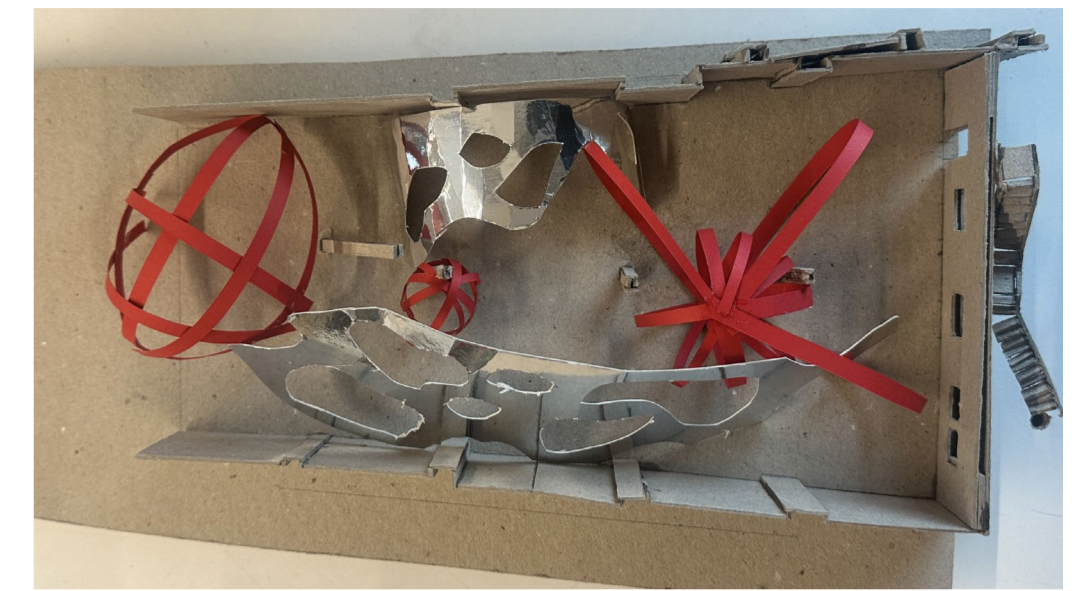
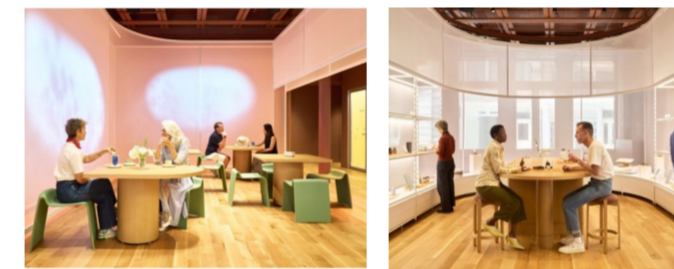


President Study

Snøhetta creates "ephemeral" retail concept lab in New

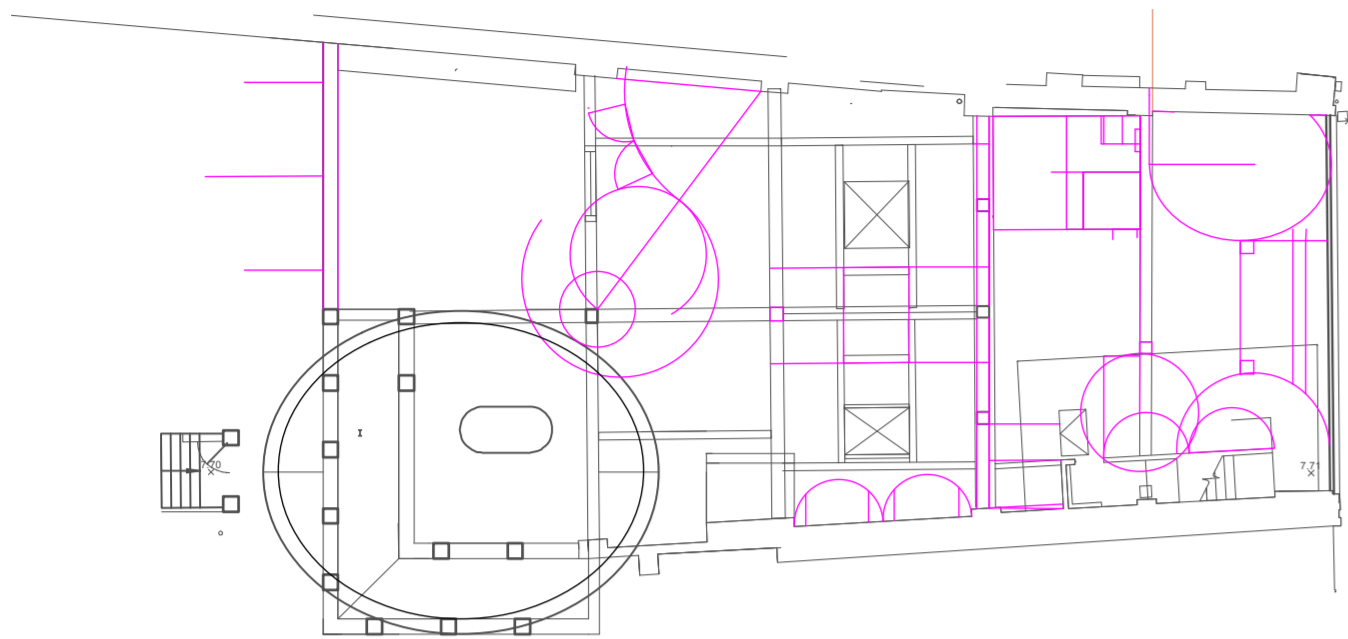


The translucency of the material hints at what's behind, aiming to intrigue passersby to wander into the space and explore.

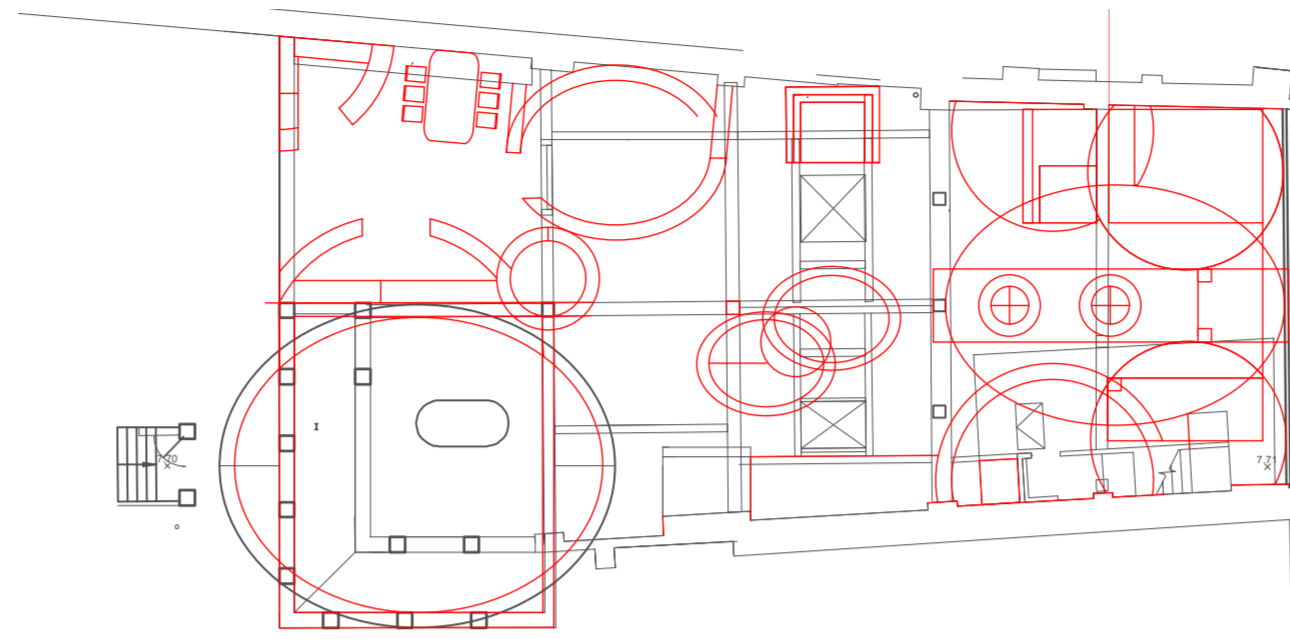


Throughout the project, I considered how spaces connect and influence design. By analysing user needs and movement, I determined adjacencies and where open areas could create meaningful transitions. The curved design guides users intuitively while responding to existing structural elements, such as columns, reinforcing organisation and spatial coherence. Reflecting the concept of "bridging communities," I explored contrasts between open and enclosed spaces to connect different experiences and atmospheres. Varying levels shape the journey from an inviting entrance to open double-height areas, an intimate lower-level gathering space, and a rear structure blending interior and exterior, enhancing perception, movement, engagement, and context.

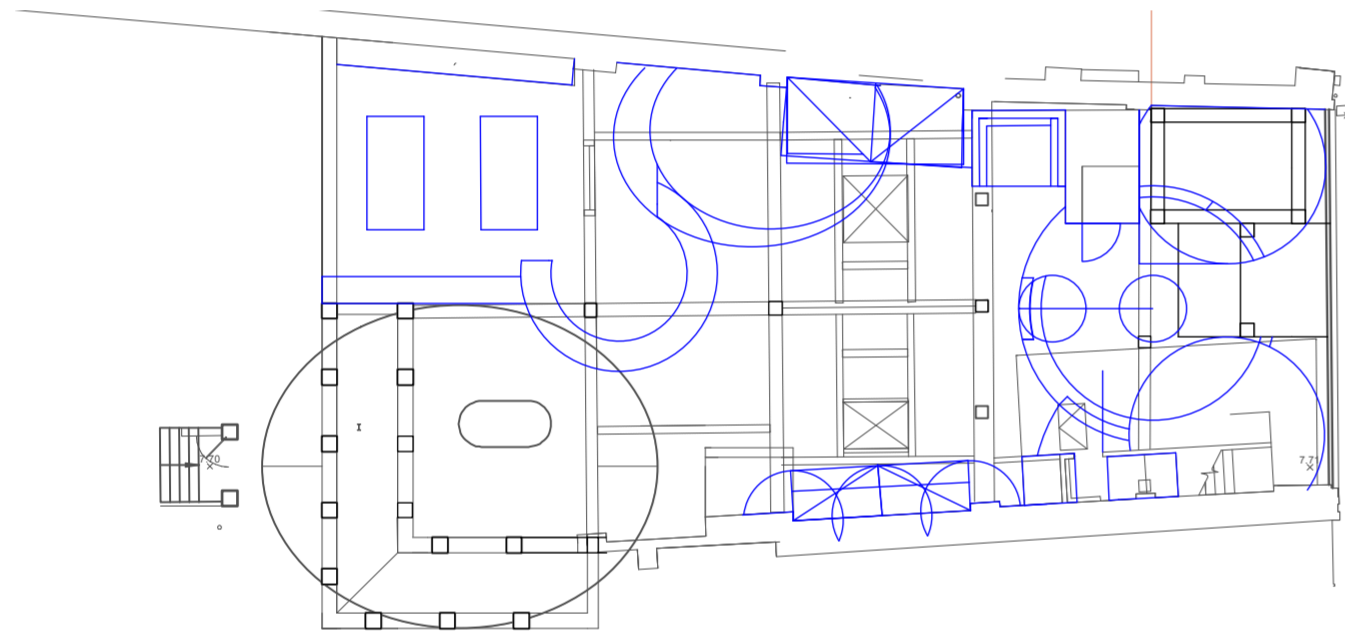




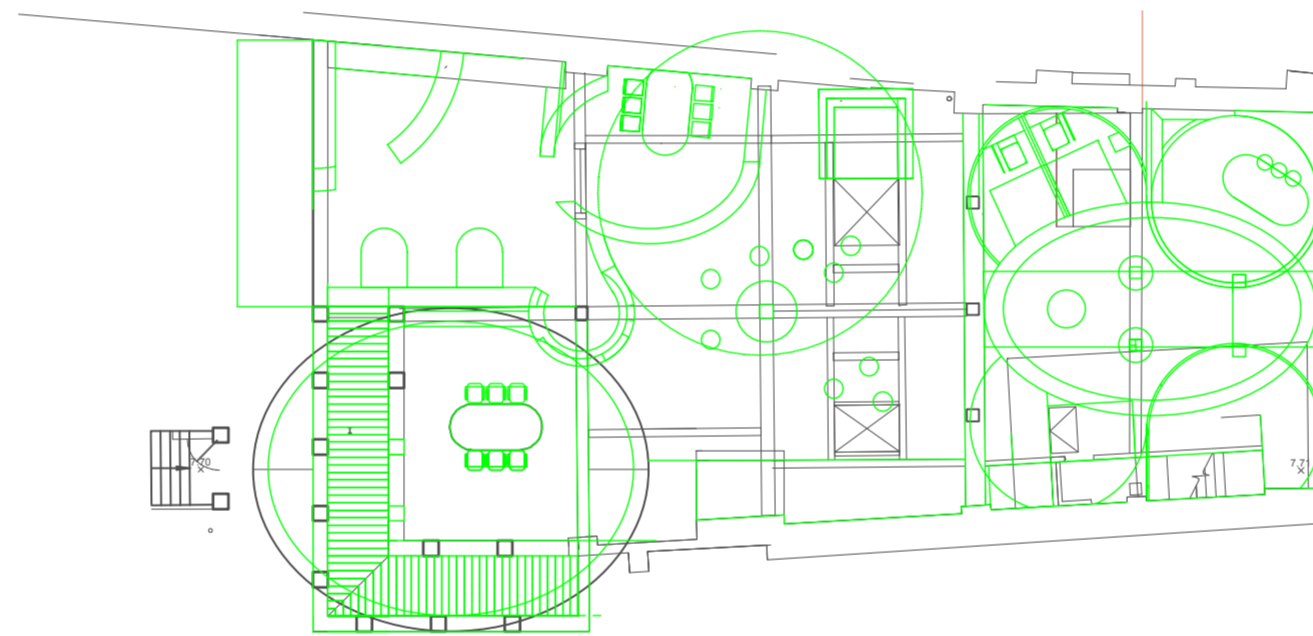
Layout 1



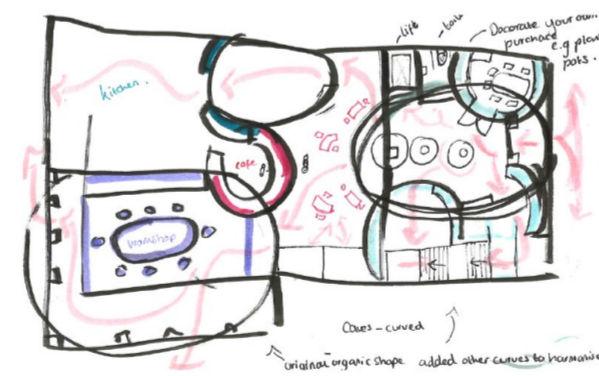
Layout 2



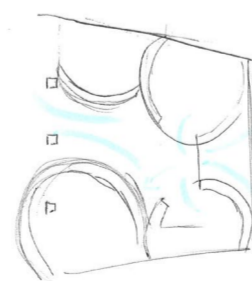
Layout 3



Layout 4



Sketches of Front entrance way and circulation



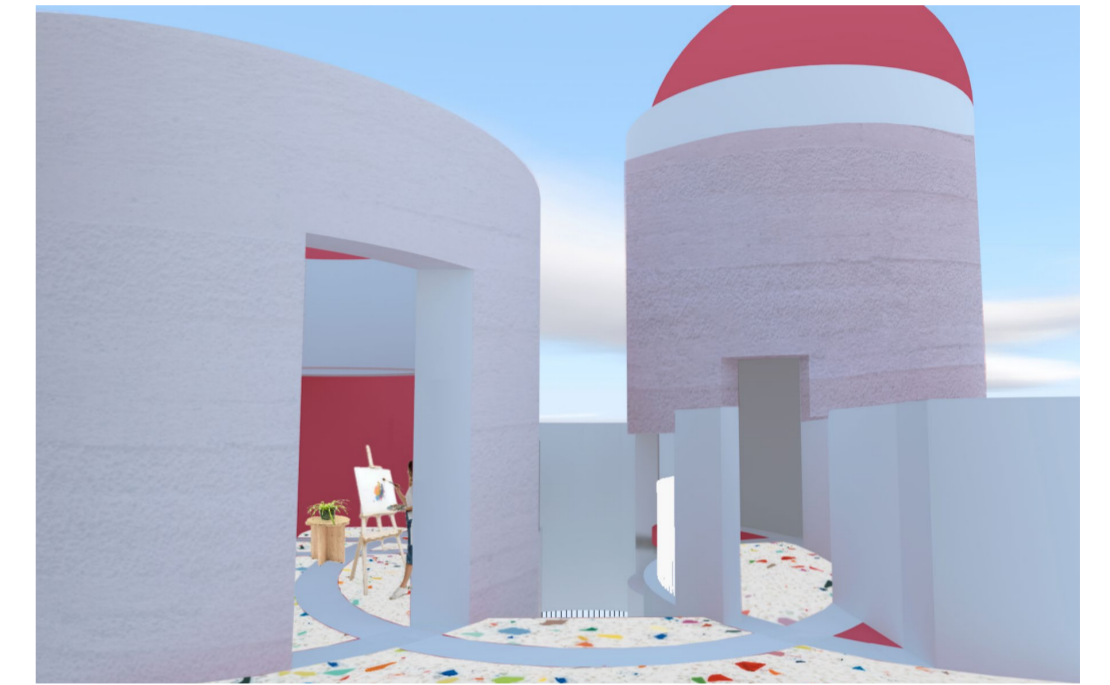
Zeitgeist: Zeitz MOCAA, Cape Town, South Africa by Heatherwick Studio



Experimentation of the layout of the ground floor plan, focusing on how to harmonise the curved, oval and circular shapes throughout the Plan.

Looking at where the shapes are placed in order to move and help guide you through the space

Journey through the building and the circular layout, extending upwards the create dome shapes that can be visibility seen from the Facade



First Floor collage



Front Facade collage

# 03 The Programme

## Communal Workshop/ Maker space

Essential hand tools (saws, chisels, clamps, screwdrivers, levels, squares)  
 -Stationary power tools (table saws, band saws, drill presses, planers, sanders, lathes, grinders)  
 Loud workshop - next to café  
 Stationary power tools  
 Communal table craft area  
 Skill-Share & Repair Cafes: Focus on mending & making, reducing waste by teaching repairs (tools, electronics, textiles) in a friendly setting (e.g., Simply Repair, Fressingfield Shed's repair cafes).  
 Dedicated Tool Libraries/Workshops: Provide bench space, tools (woodworking, metalworking), and training for hobbyists and makers (e.g., Swan Wharf Workshop)

- Community Hubs with Workshops: Offer diverse workshops (DIY, crafts, gardening) alongside community gardens/farms, promoting holistic wellbeing (e.g., Holme Farm, Brighton Community Workshop).
- Garden-Specific Workshops: Focus on horticulture, garden design, and sustainable practices, sometimes involving local landscape experts (e.g., The Exchange's Garden Workshop).

The Exchange's Garden Workshop)

- Learn Skills: Woodworking, tool maintenance, gardening, upcycling, sewing, botanical crafts (perfume, kokedama).
- Access Tools: Use shared benches, power tools (3-phase), and equipment in a communal space.
- Repair Items: Bring broken household goods, garden tools, or furniture to fix with expert guidance.
- Community Gardening: Participate in planting, maintenance, harvesting, and composting.
- Build/Create: Work on personal DIY projects in a dedicated, supportive environment.



## Craft Workshop

Work Surfaces:  
 Large, Durable Tables: Sturdy, spacious tables (perhaps grouped, like in a science lab) are essential for spreading out projects. Surfaces should be easy to clean or protected with large, self-healing cutting mats.  
 Adjustable/Drafting Tables: For drawing, painting, or detailed work, adjustable-height or table drafting tables provide ergonomic flexibility.  
 Mobile Carts/Workstations: Rolling carts offer flexibility, allowing you to move supplies or create a temporary workspace where needed.  
 Easels: For painting or display purposes, various easels should be available.  
 - Ergonomic Chairs/Stools: Adjustable seating is crucial for comfort during long hours of work to reduce strain or injury. Drafting stools are useful for higher tables.

Cutting Tools

- Scissors: Include various sizes and types, such as large all-purpose scissors, small precision scissors (like embroidery scissors), and potentially left-handed options.
- Craft Knives: X-Acto or utility knives for intricate and precise cuts.
- Paper Trimmer/Guillotine: Useful for achieving straight, clean cuts on paper and cardstock efficiently.
- Aprons or old shirts for protecting clothing.
- Storage containers for organization.
- Paper towels or rags for cleanup



## Garden Area

- Core Hand Tools (The Basics)  
 Trowel: Crucial for planting seedlings, potting, and digging small holes.  
 Hand Pruners/Secateurs: Used for cutting, trimming plants, and removing dead branches.  
 Soil Knife: A versatile tool for weeding, planting, and cutting through tough roots.  
 Gardening Gloves: Protect hands from thorns, dirt, and blisters.  
 Hand Cultivator/Fork: Ideal for breaking up soil, weeding, and aeration.  
 Long-Handled Tools (For Larger Tasks)  
 Spade: A short-handled, square shovel ideal for digging, edging, and lifting sod.  
 Garden Rake: Used to level soil and remove debris.  
 Hoe: Used for weeding and cultivating topsoil.  
 Watering and Maintenance  
 Garden Hose with Nozzle: Necessary for consistent watering, especially in summer.  
 Watering Can: Essential for delicate plants or areas not reached by a hose.  
 Wheelbarrow or Garden Cart: Used for moving soil, compost, weeds, and heavy pots.

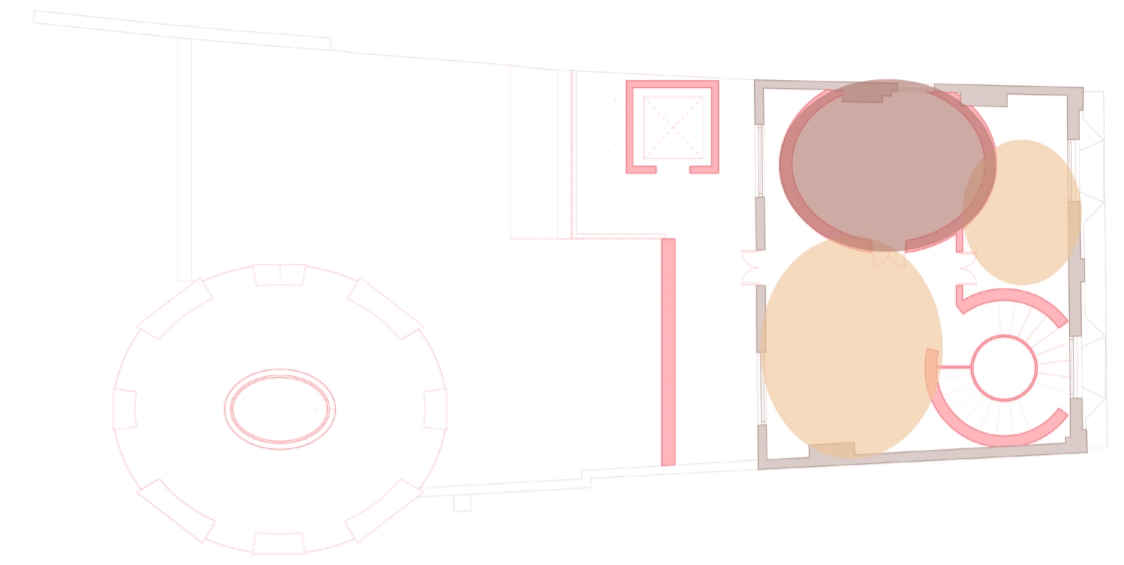
Quiet Spaces.

- Acoustic Management (Sound Control) Barriers & Sealing: Sound travels through air gaps. Effective spaces use solid-core doors, weatherstripping, and acoustic caulk to seal leaks around frames and outlets.  
 Absorption: Use soft, porous materials to soak up sound and reduce echo.  
 Floors: Thick area rugs with dense rubber or felt underlays.  
 Walls: Acoustic panels (2-4 inches thick), heavy velvet or blackout curtains, and fabric-covered partitions.  
 Furniture: Bookshelves filled with books act as natural diffusers; upholstered sofas and high-back chairs serve as "bass traps" to absorb low-frequency noise.
- Visual Privacy Zoning: Position the space away from high-traffic areas, ideally in corners or nooks.  
 Separation: Use room dividers, folding screens, or even tall plants to create a physical and psychological sense of enclosure.  
 Clutter Control: Keep the area minimalist. Visual clutter increases cognitive load and cortisol levels, making it harder to focus.

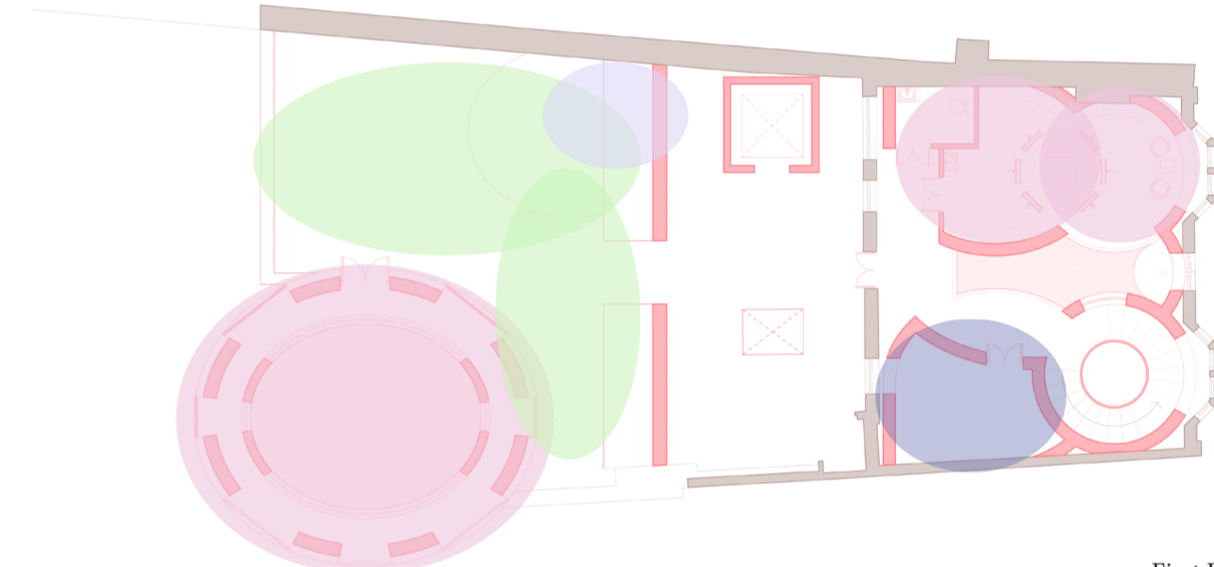


Diagram Key:

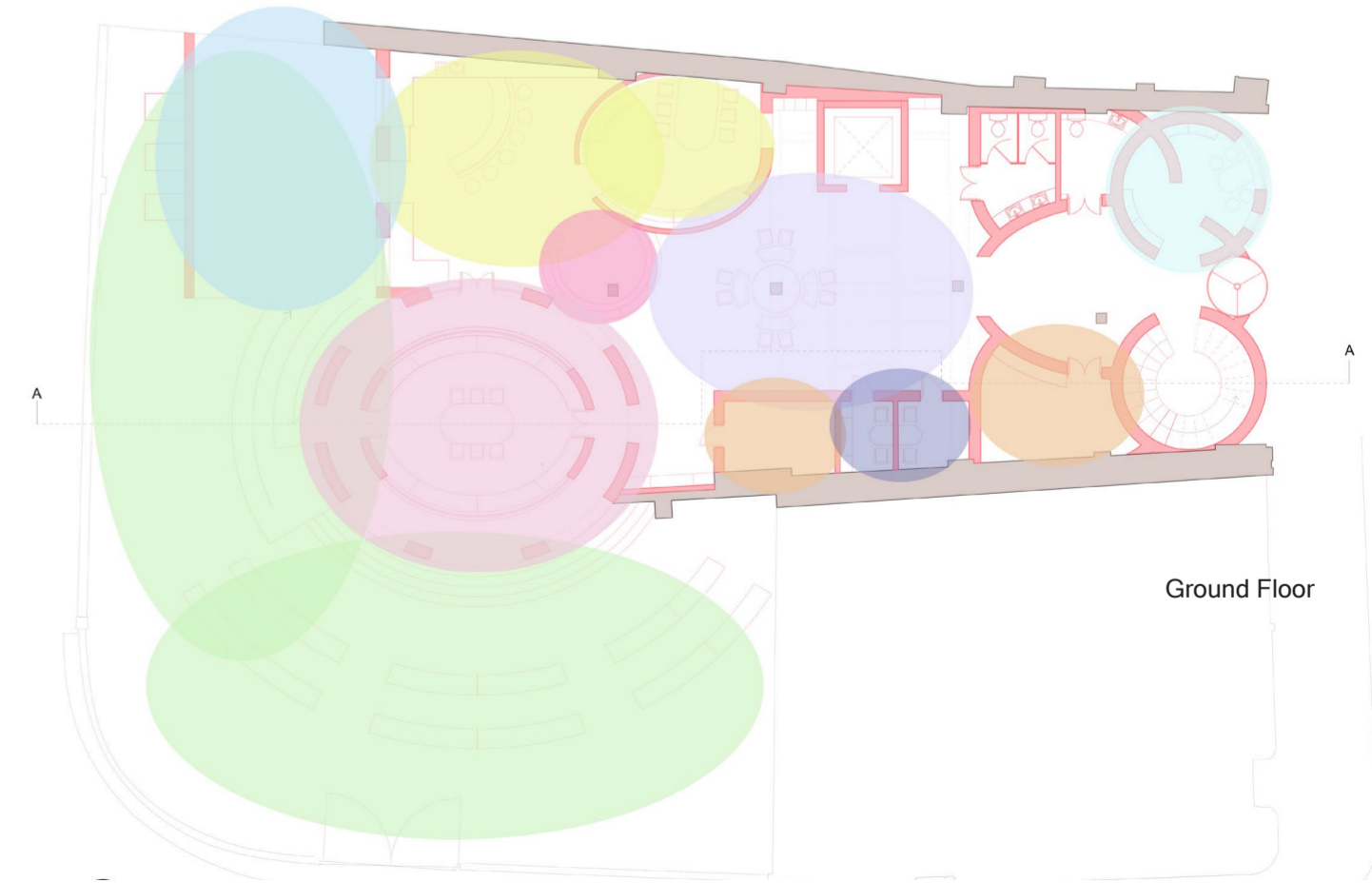
<span style="color: #f08080;">■</span> Workshop Space	<span style="color: #add8e6;">■</span> Shop
<span style="color: #90ee90;">■</span> Gardening Area	<span style="color: #4169e1;">■</span> Lounge Area
<span style="color: #add8e6;">■</span> Patio Area	<span style="color: #8b4513;">■</span> Teaching Area
<span style="color: #ffff00;">■</span> Kitchen	
<span style="color: #ff69b4;">■</span> Cafe	
<span style="color: #d8bfd8;">■</span> Seating Area	
<span style="color: #ffa500;">■</span> Storage	
<span style="color: #4682b4;">■</span> Quiet Area	



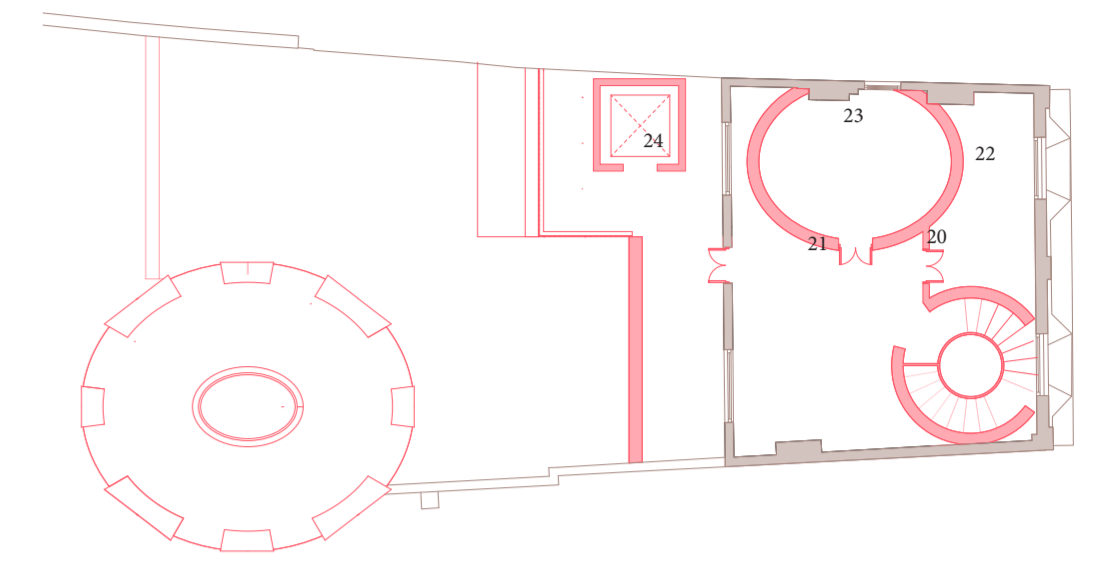
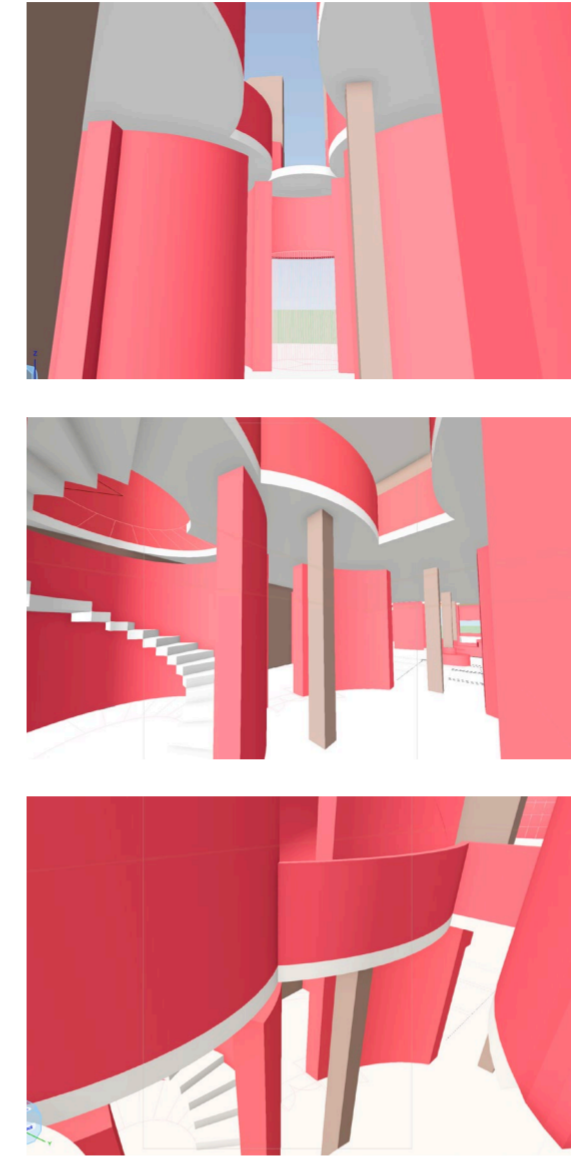
Second Floor



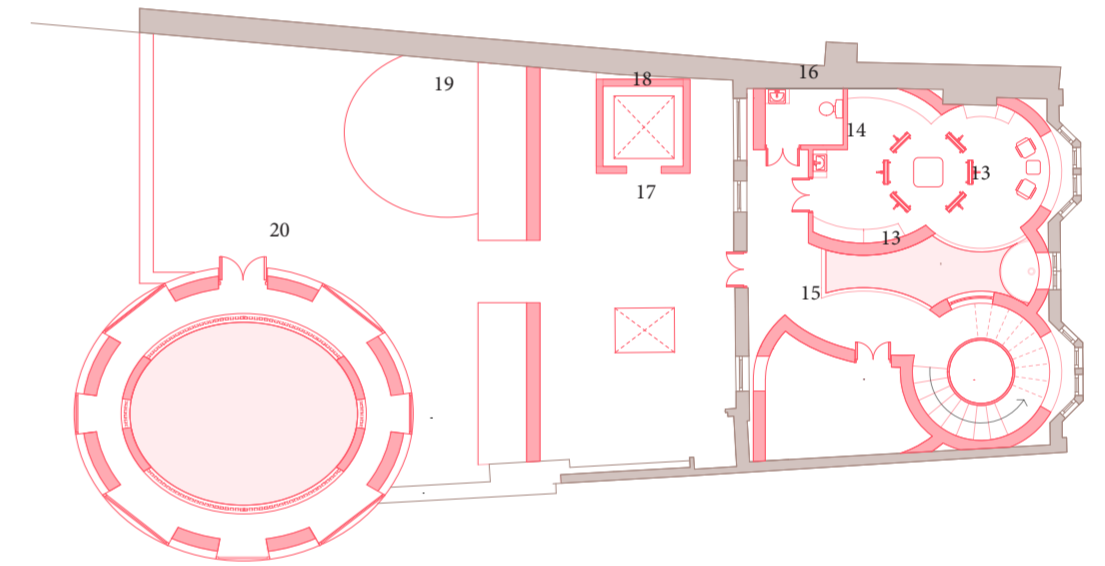
First Floor



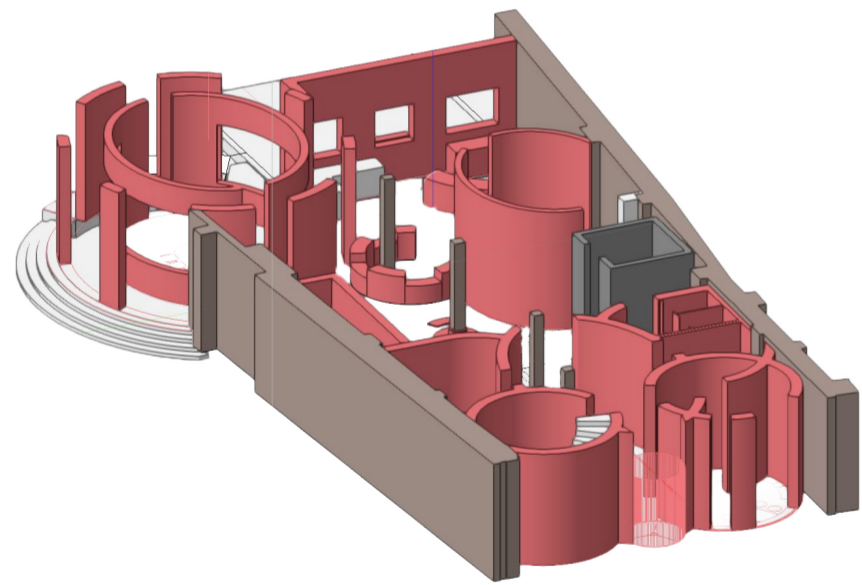
Ground Floor



Second Floor



First Floor



Ground Floor Isometric

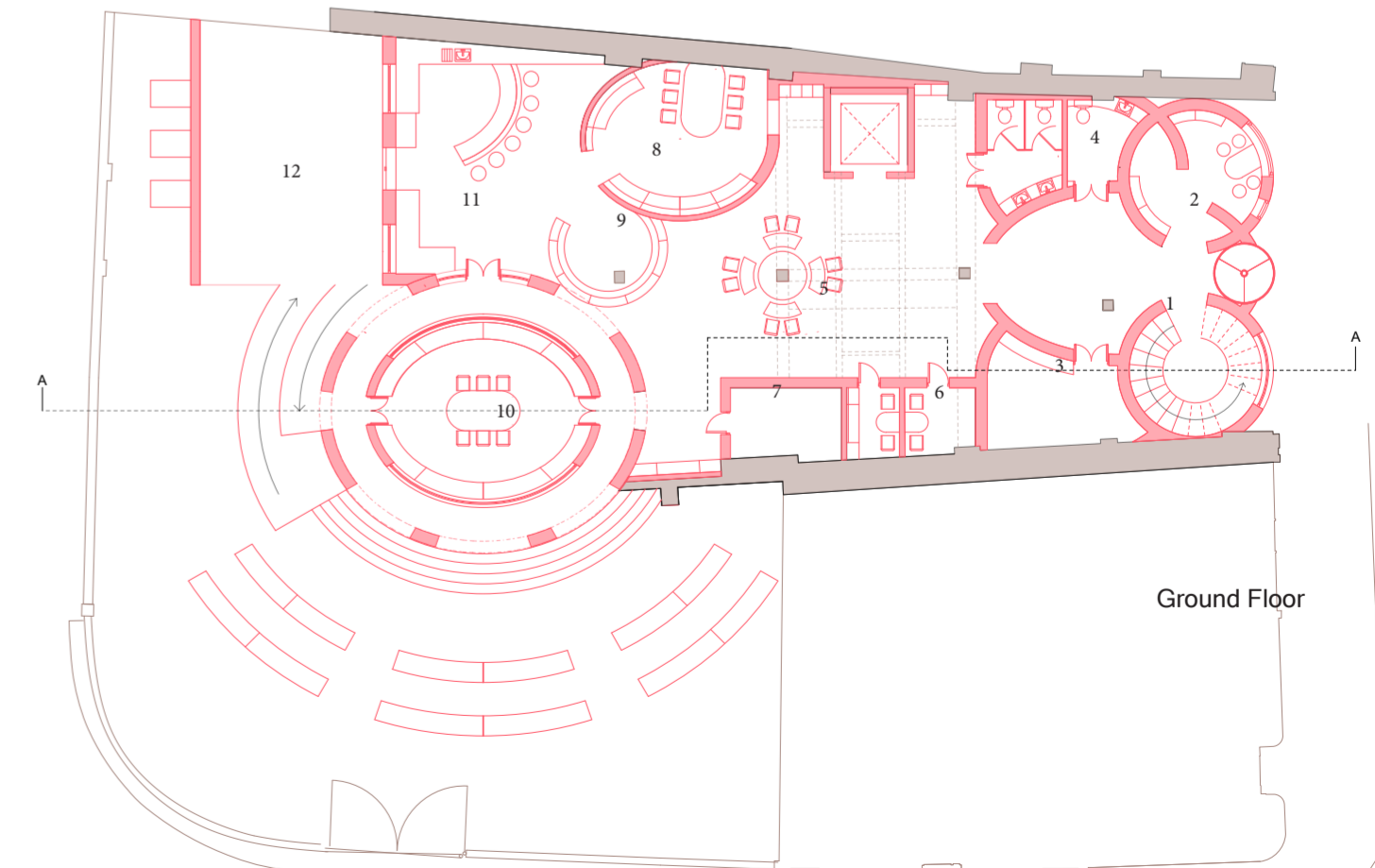


Front Elevation



Ground Floor Isometric

- Ground Floor:**
1. The Entrance
  2. The shop
  3. Storage
  4. WC
  5. Seating
  6. Quiet discussion rooms
  7. Storage
  8. Kitchen workshop
  9. Cafe
  10. Workshop
  11. Communal Kitchen
  12. Outdoor Garden Patio
- First Floor :**
13. Balcony Areas
  14. Arts & Crafts Workshop
  15. Film/ lounge Space
  16. WC
  17. Terrace Sheltered Space
  18. Lift
  19. Outdoor Seating Area
  20. Balcony over Workshop
- Second Floor:**
20. Quiet Lounge Area
  21. Learning/ Teaching Room
  22. Quiet Talking Room
  23. Balcony over looking the terrace
  24. Lift



Ground Floor

