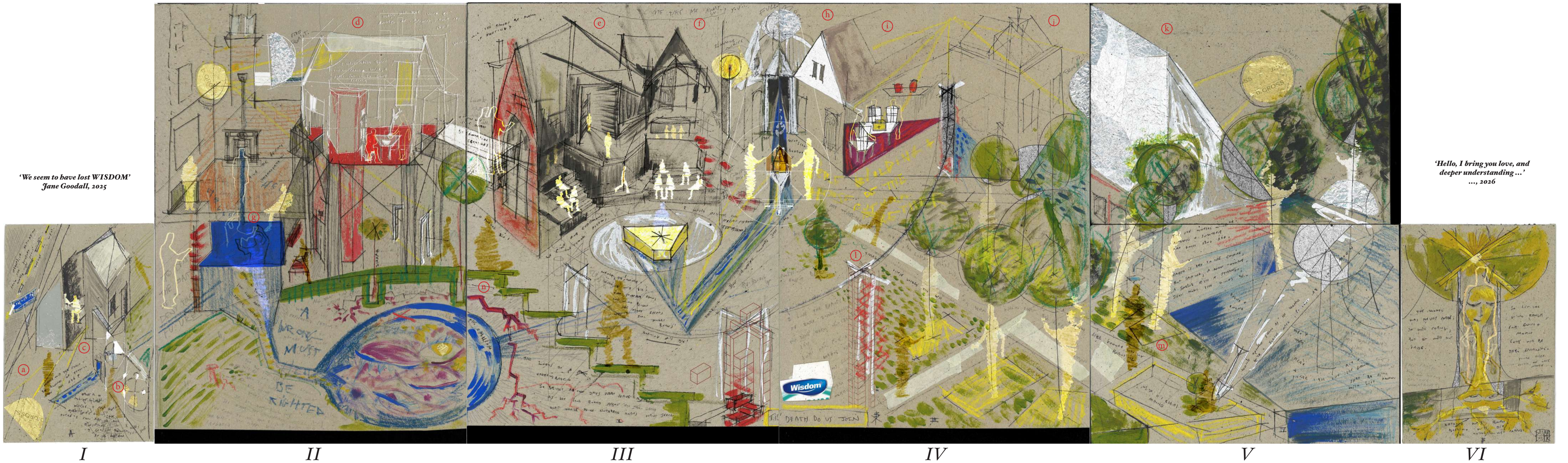


THE WELL

OF WISDOM

'We seem to have lost WISDOM'
Jane Goodall, 2025

'Hello, I bring you love, and
deeper understanding...'
..., 2026



'The Well' is a NON-DENOMINATIONAL ALTERNATIVE BURIAL PROJECT, one which reconsiders humanity's connection with the NATURAL WORLD (wisdom) in response to our current fragmented relationship with it in a 21st Century world. The burial complex uses an up-and-coming process known as 'PROMESION', which unlike the commonly used 'cremation' is set to be a far greater practice for the future of funerary processes. Among many positives, the process itself produces reduced amounts of carbon and the end result both tackles problems such as limited space in burial sites but could also be something very beautiful when keeping visitors, loved ones in mind. Perhaps less invasive in its nature also, here the body is frozen, gently vibrated and becomes a SOIL. This can then be planted out in a decomposable box, and within a year becomes completely integrated within the ground soil. Planted with a tree above, A LOVED ONE BECOMES A PART OF THAT TREE, a member of what will one day be a FOREST. A forest instead of a field of stones. We become a part of our surroundings once more. THE PEOPLE AS THE TREES, THE TREES AS THE PEOPLE

The complex is a proposed project for the disused Ladywell Coroners Court and Mortuary, a stunning Neo-gothic site and one which demonstrates the Victorian's fascination and LEVEL OF CARE when it came to matters of death. This project, too, aims at adding to the built environment in a meaningful way and one which RESPECTS both the living and the deceased.

'PROMESION, here is a practical and accomplishable process which runs adjacent to the overarching theme of a 'return to nature' and an aim to regain WISDOM. Through design strategy and specific intended circulation of the site, 'the Well' encouraging us to LOOK DEEPER, view things in a different way, remember loved ones in new ways and stay tuned into the natural cycles that are at work around us right now as you read this. The project gives us a way in which to regain WISDOM. Promesion is the path back to WISDOM, of giving back to the earth, a RETURN TO EARTH.

The outcome, alongside rediscovering WISDOM, is the uncovering of a new 'Well'. In the same way the original 'Lady-Well' sprung up suddenly in the summer of 1472, offering the community drinking water and healing, so too does 'the Well' arrive when it is needed most. A LIVING, BREATHING, AQUEOUS THRESHOLD, 'the Well' serves as means of communication. Between both ourselves and nature, and also between PAST, PRESENT AND FUTURE. In the same way those waters were vital to the people of Ladywell back then, they can be again.

The project intertwines historical FACT with local FOLKLORE and trackings of NATURAL PHENOMENA of the area, aiming to be read as a PROPHECY or a VISION, both a WARNING and a DREAM of what the future could be. The project concludes that the only way to truly rediscover WISDOM, is to BECOME A PART OF IT once again. THE PEOPLE AS THE TREES, THE TREES AS THE PEOPLE.

Promesion / The Well Tapestry

I - all phases - crossing the threshold, entry + meeting place (the gatehouse)

II - first quarter moon - registration of death (the half-way house) and placing of a brick (the well)

III - full moon - the remembrance service and procession (the big house, the telescope and the tomb)

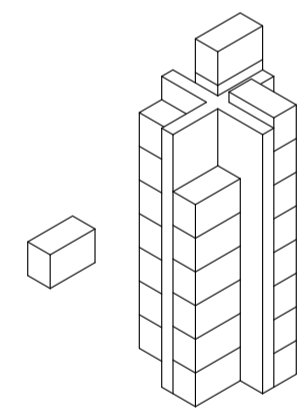
IV - third quarter moon - promesion takes place and family come back to choose a plot + a tree (the tomb and the smaller house)

V - new moon - burial, planting and watering of the loved one and tree (the field and house of the equinoxes)

VI - all phases - returning to visit the loved one as they become a part of earth again, wisdom!

- a) Ladywell Rd
- b) the Gates
- c) the Gatehouse
- d) the Half-way house
- e) the Big House
- f) the Telescope
- g) the Well

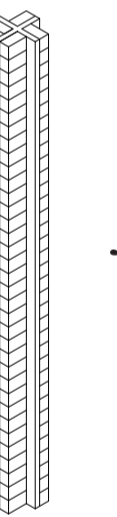
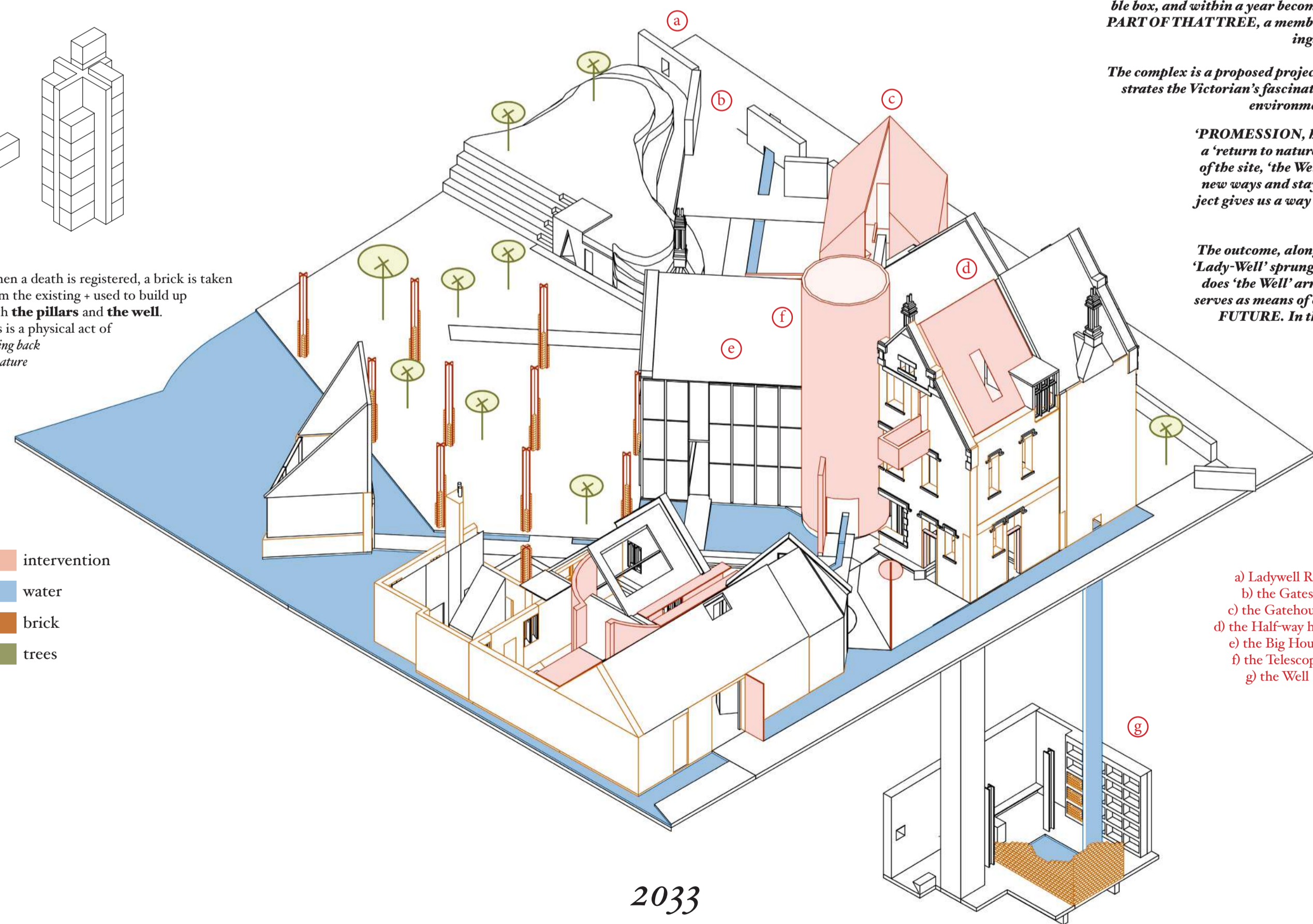
- h) the tomb
- i) the smaller house
- j) water closets
- k) house of the equinoxes
- l) the pillars
- m) the field
- n) the mound



When a death is registered, a brick is taken from the existing + used to build up both the pillars and the well. this is a physical act of giving back to nature

- intervention
- water
- brick
- trees

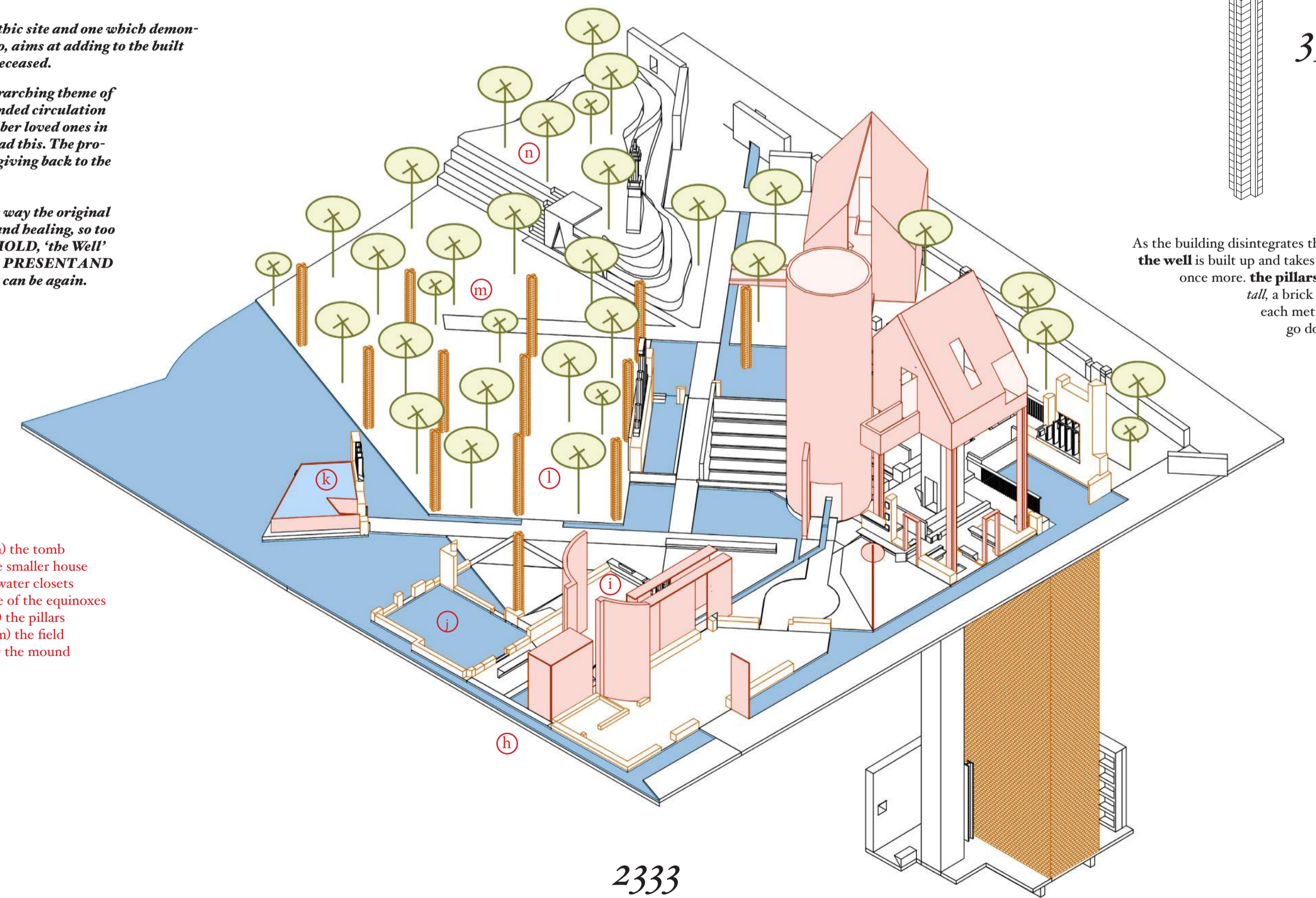
2033



35

As the building disintegrates through time, the well is built up and takes prominence once more. the pillars are 35 bricks tall, a brick to represent each metre needed to go down to reach the well again

2333



II

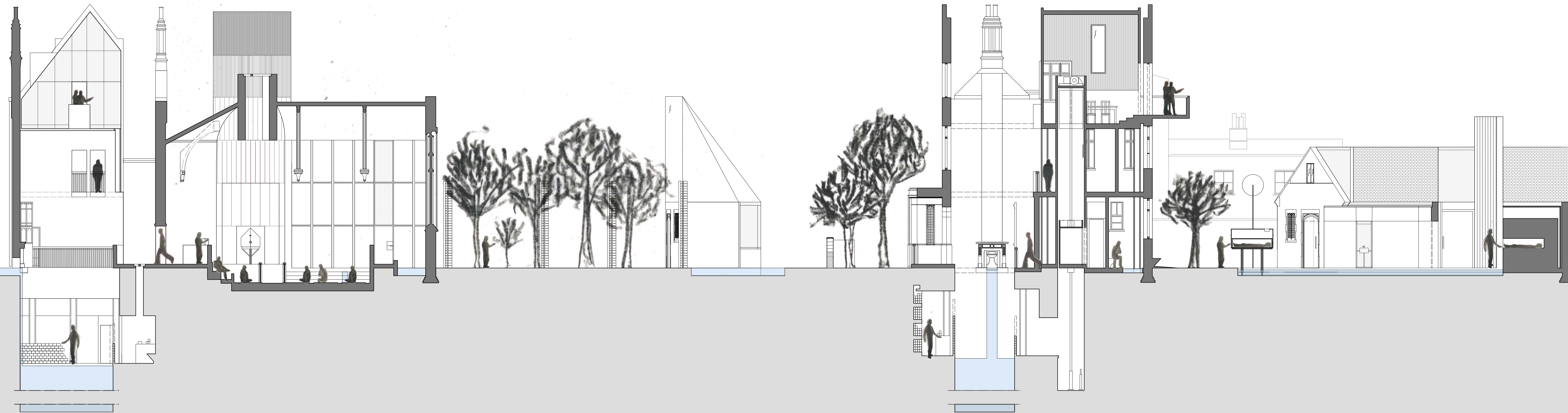
III

V+VI

II

III

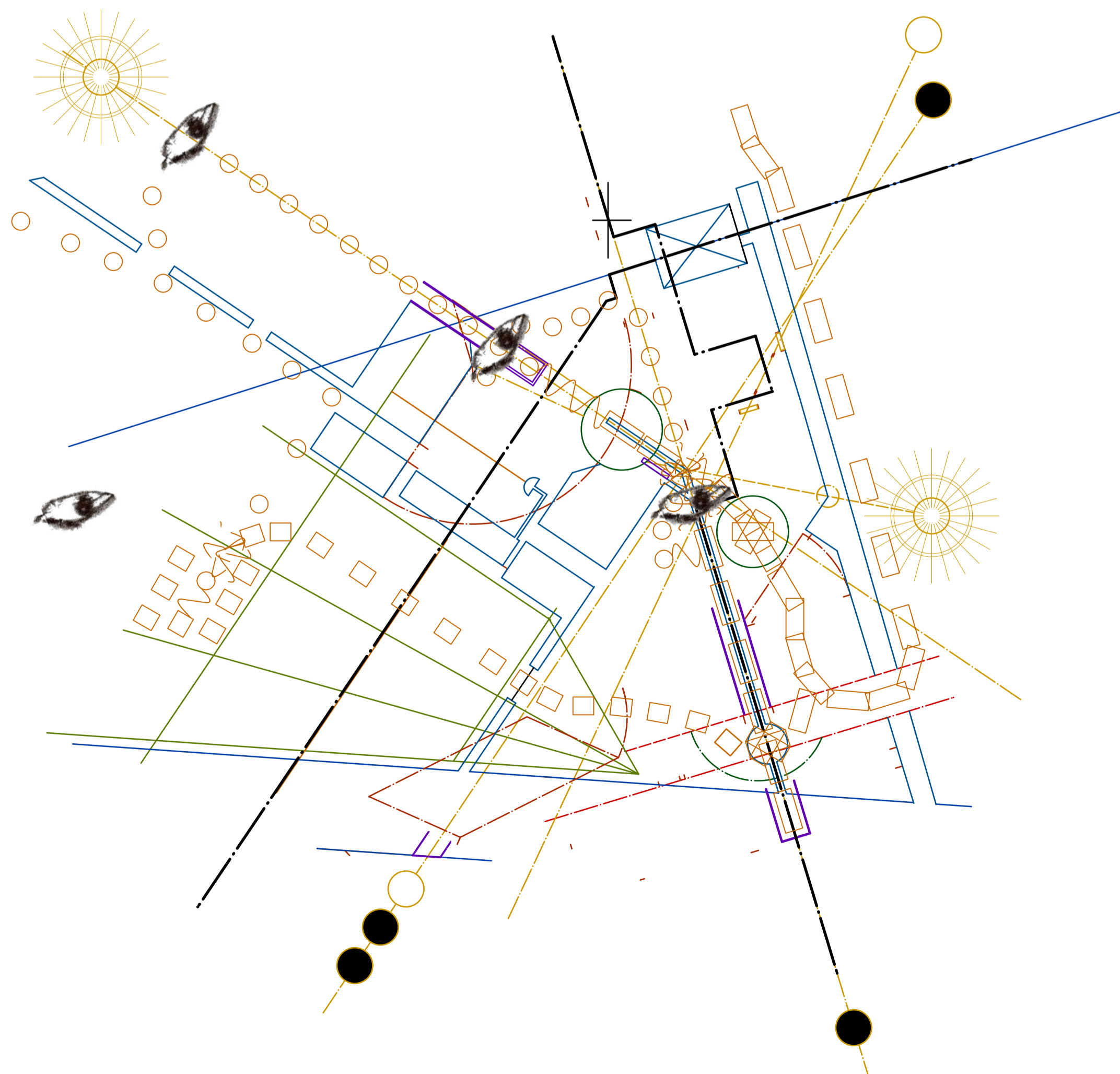
IV



section AA, 1:100

section BB, 1:100

this overlay of the main proposed plan demonstrates the ways in which the form each structure takes, sequencing between them and circulation around them has been dictated by natural cycles that take place around the site constantly, sun and moon paths, light + water etc



The Well, 'lines' plan @ 1:200

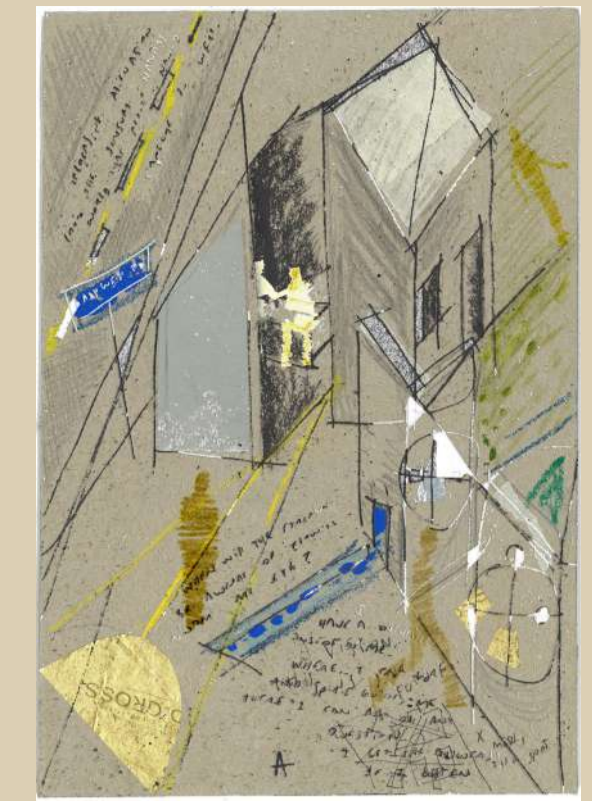
- ⊕ true north
- ☀ winter and summer solstice suns
- solstice / equinox sun paths
- solstice / equinox moon paths
- ▭ water
- ▭ balconies + tunnels
- └─┘ cuts + maneuvers
- connections, grids
- loved ones, living
- ◻ loved ones, deceased
- ⊕ point of close connection between loved ones
- ◻ loved ones deceased, as soil
- ⊕ crossing paths of loved ones
- 👁 a view - 1, 2, 3 + 4



The Well, plans @ 1:200

- a - the big gate
- b - the smaller gate
- c - the gatehouse
- d - the big house
- e - the telescope
- f - the well
- g - the well, subterranean
- h - the halfway house ^
- i - the tomb
- j - the promession machine
- k - the smaller house
- l - the water closets
- m - house of the equinoxes
- n - the field
- o - the pillars
- p - the mound

I - THE GATEHOUSE



as seen in ... part I of the Tapestry

follows - the path of the winter solstice sun

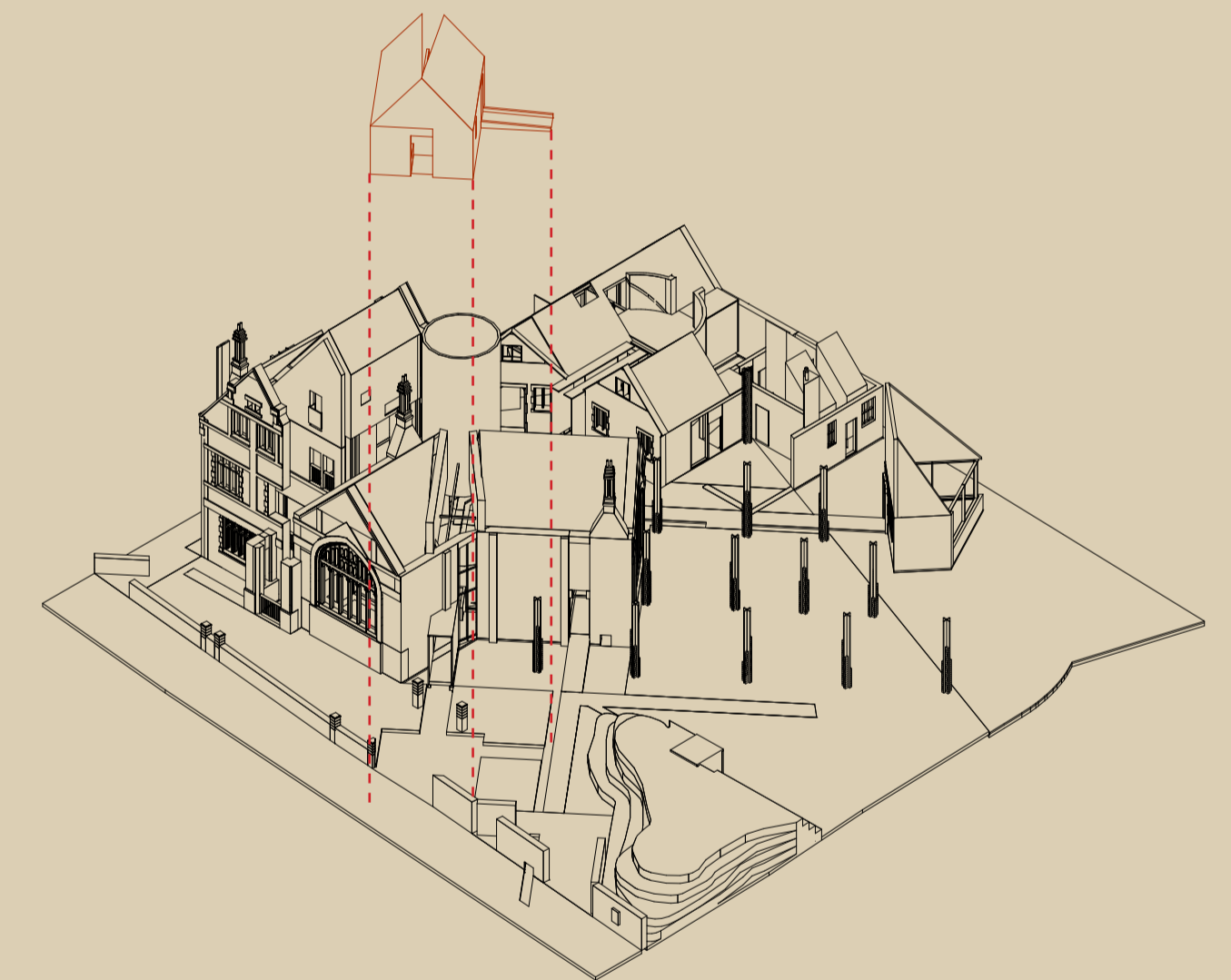
visited - at any moon phase

for remembrance service - meeting place on the morning of, for families to gather in before passing through to the Big House

for everyday - a threshold for the public, a distinct separation from the outer world + urban setting, suspense builds to meet 'the well'

form - the Gatehouse shape is inspired by both the repeated pitched gable shape seen throughout the site + to act as a symbolic, familiar shape of a 'house'

materiality - its cast geopolymer concrete form reflects a desire to create new monuments for the future

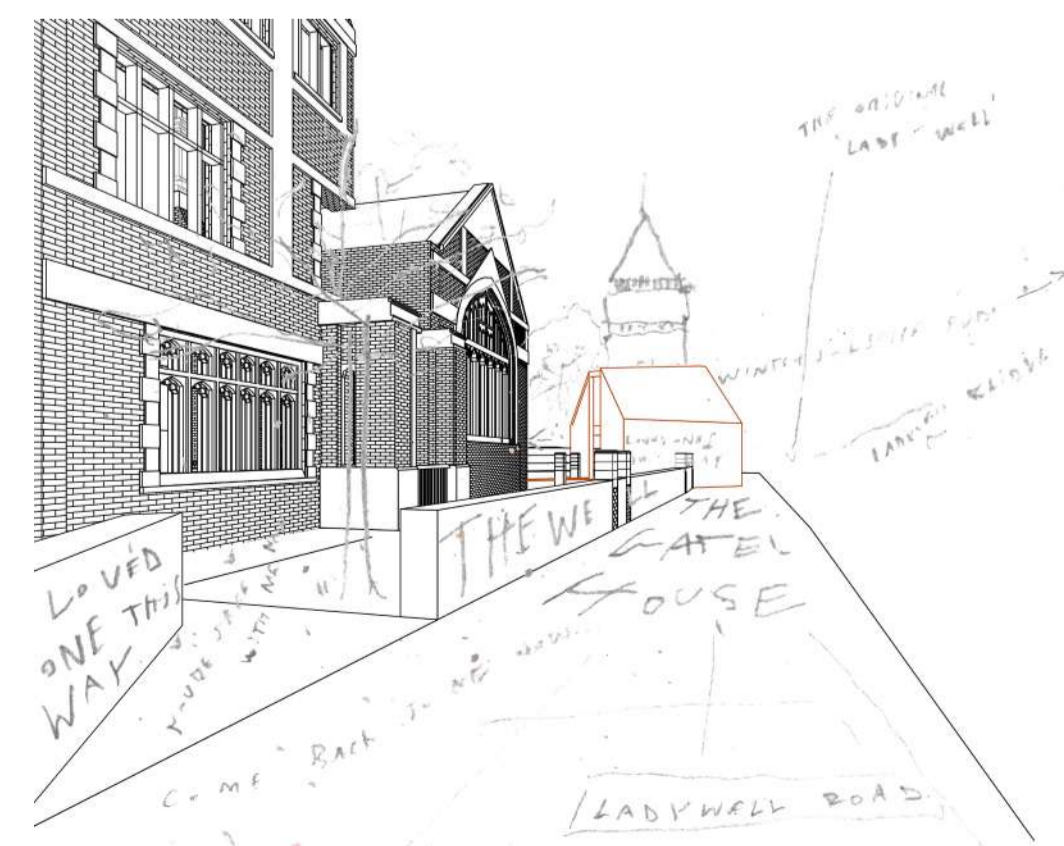


exploded left isometric
tapestry part I / the Gate

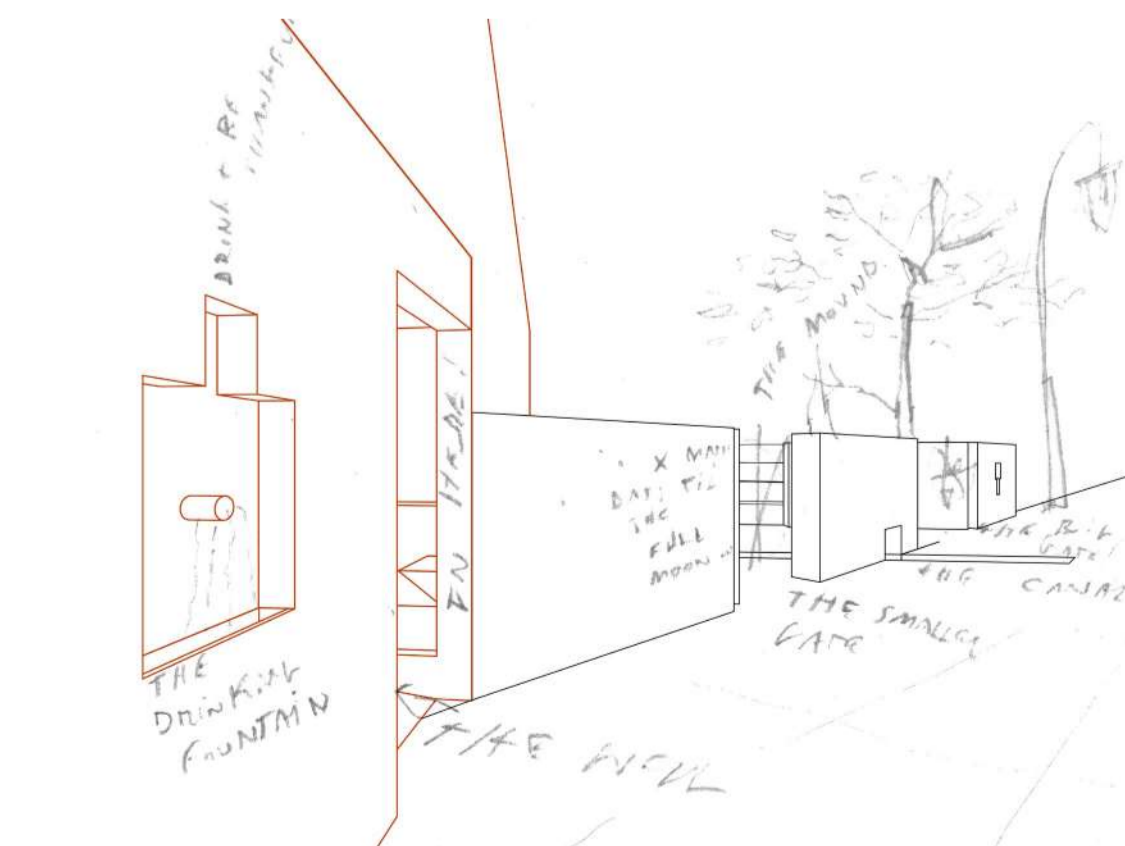


the Gatehouse -
realized interior vision
hybrid, mixed media piece

The Entry Sequence :



approach up Ladywell Rd, facing Ladywell bridge + the original 'lady-well'
... a house has been dropped from the sky



the entryways - gatehouse to left, gates to the right
canal comes out under the wall to greet the public, drinking fountain restored

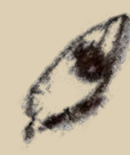


inside the Gatehouse, looking out to the field, glimpses of the trees, glimpses of what is to come ...



1:100 working model photographic view, crossing over

2 - THE BIG HOUSE + TELESCOPE



as seen in ... part III of the Tapestry

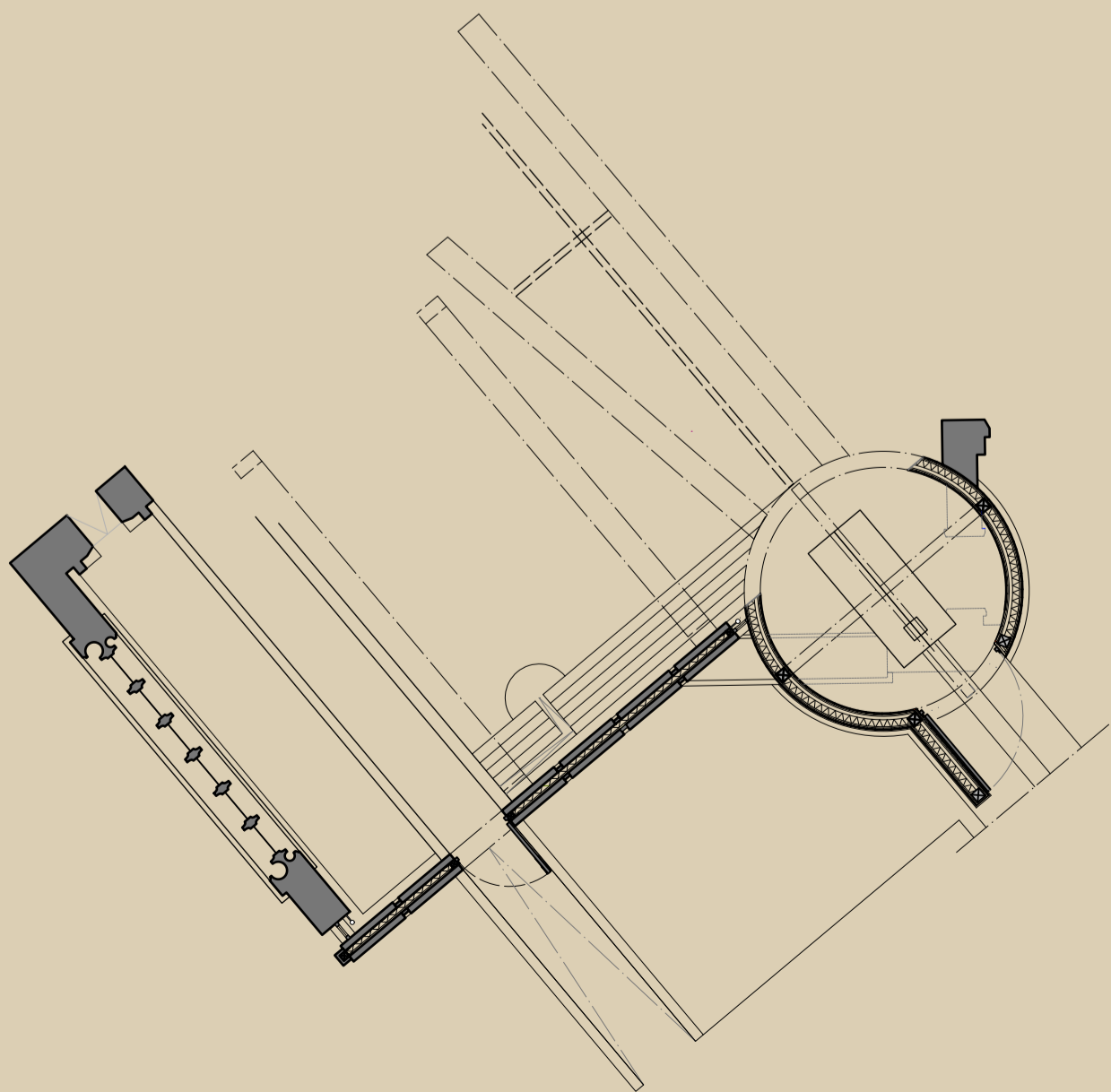
follows - the path of the winter solstice sun

visited - on the evening of the full moon

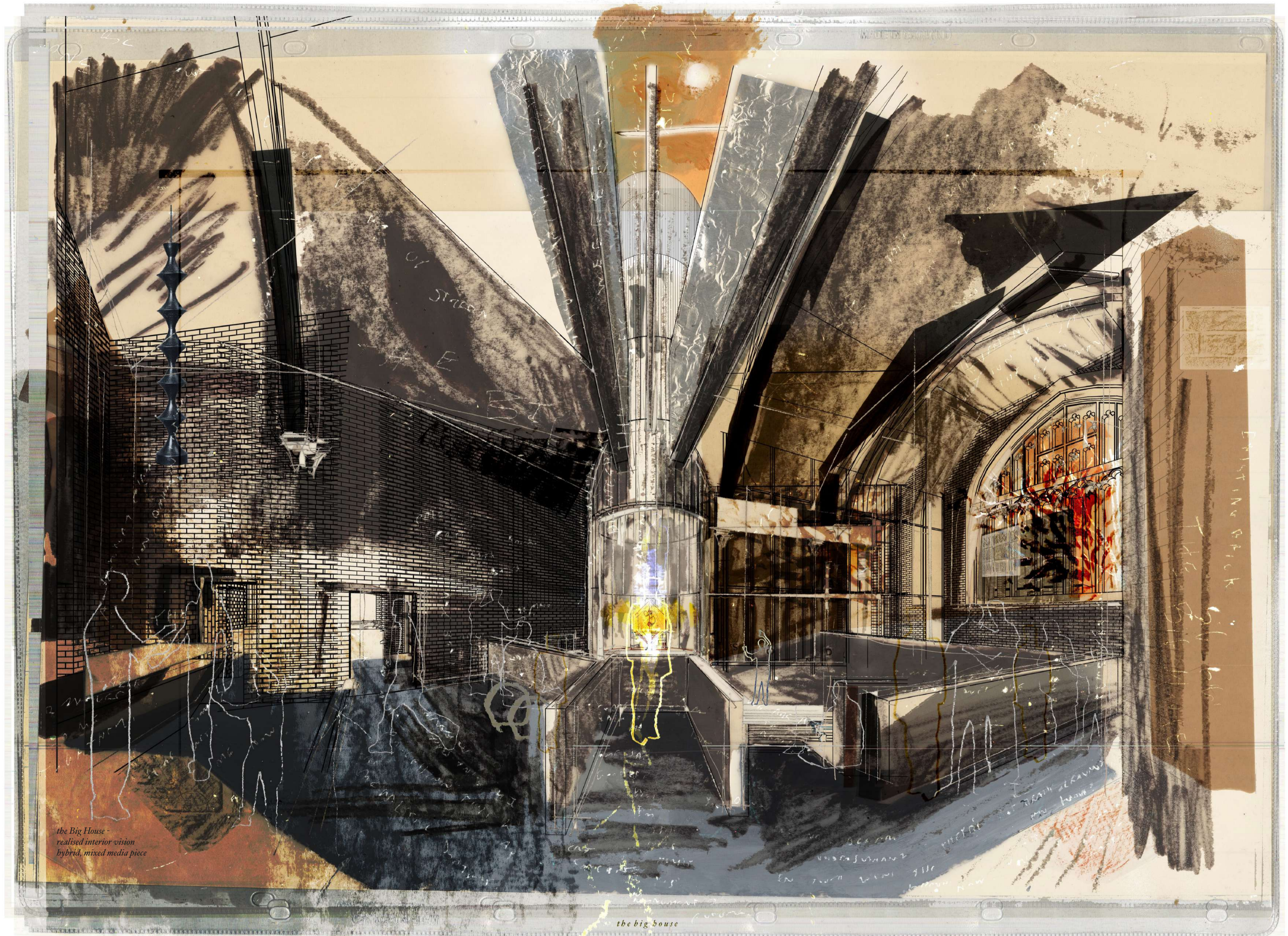
for remembrance service - where the service itself is held, tiered seating overlooks the 'telescope', a balcony above places the loved one (living) on the same plane as the loved one (deceased), space for communal eating and drinking post-service

for everyday - a larger gathering space, events could be held here, an antichamber to the well

form - half of the existing hall itself has been shifted in order to align with the sun and moons of the equinoxes + 'split' similarly to the Gatehouse. the telescope is a structure which allows the moon to view the body from above, before coming to 'pick it up' (see part 3, the Tomb). the tiered seating which goes below ground allows the loved ones (living) to feel closer to the well and as symbolic of the direction the loved one (deceased) is heading (*back down to earth*)

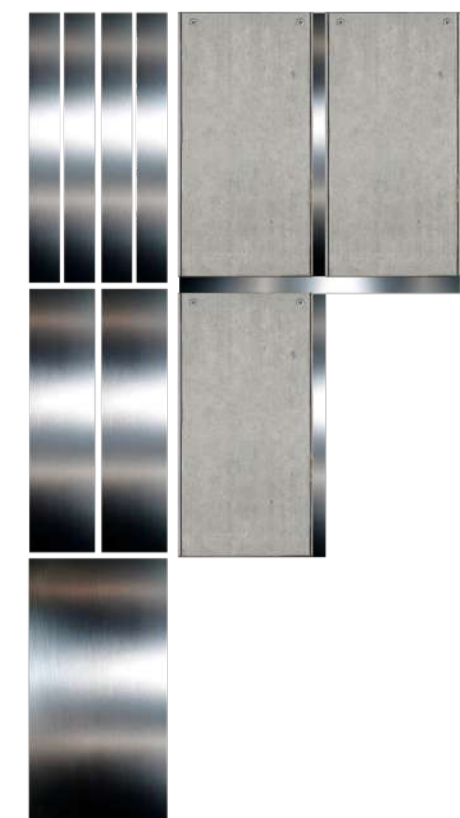


the big house - focus area plan @ 1:100



the Big House - realised interior vision hybrid, mixed media piece

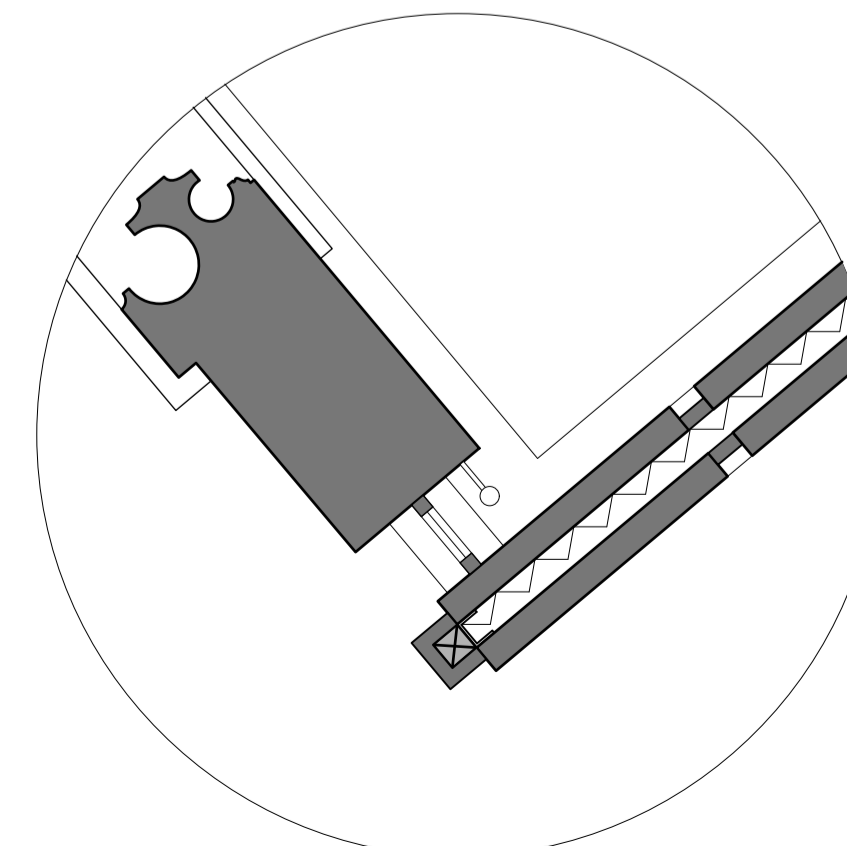
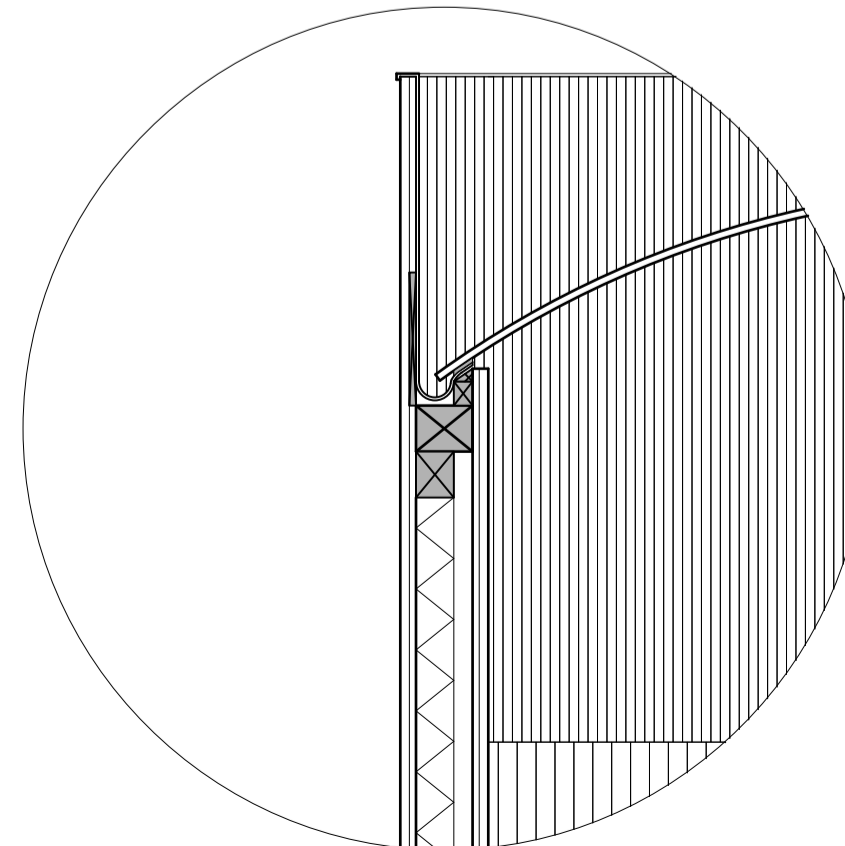
the big house



materiality - here, especially, the big house aims to translate the procession process via its makeup. both the aluminium panels, used for the Telescope and concrete slabs, to right of the Telescope, are 'people' sized.

the concrete slabs remain constant in dimension and 12 slabs on the wall facing the congregation make up a calendar wall, reflecting the period taken for the loved one to become part of the ground soil.

the aluminium sheets halve in width every 'person' height they go up, giving the Telescope a forced perspective but also reflecting a disintegration, the body begins whole and evaporates up, up into the sky and is a part of nature again. this too, reflects the process of gentle vibration which occurs during 'procession'



1:25 big house details - the telescope / existing meets intervention

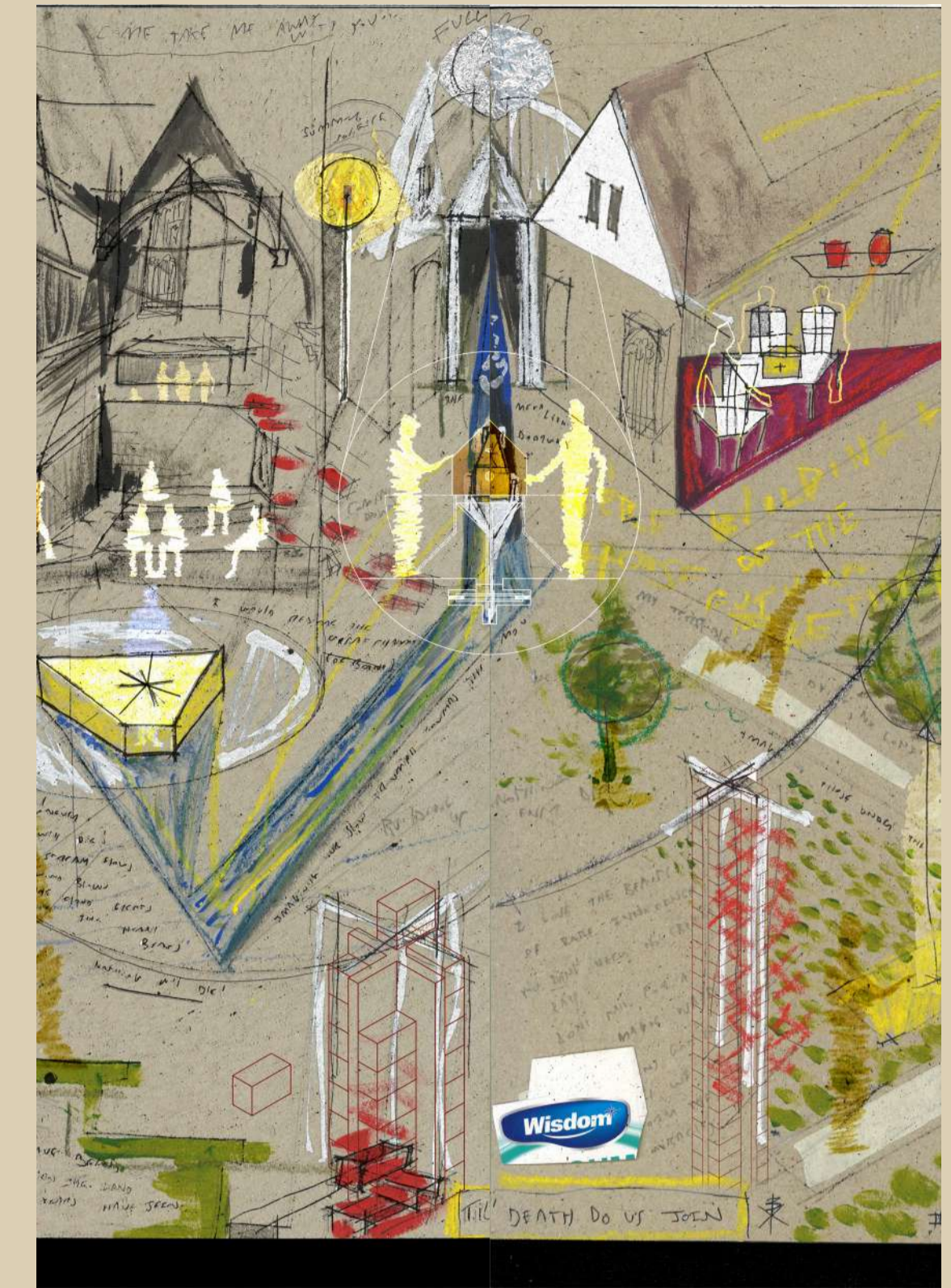


passing through doorway highlighted to left of the Telescope (view above) see the well! both the big house and the well use fireplaces as entry points for water ...



for other gatherings ... the summer solstice sun pole (see above) is where celebrations are directed towards on this day, a crowd will gather here in the courtyard

the Tomb - realised exterior vision hybrid, mixed media piece



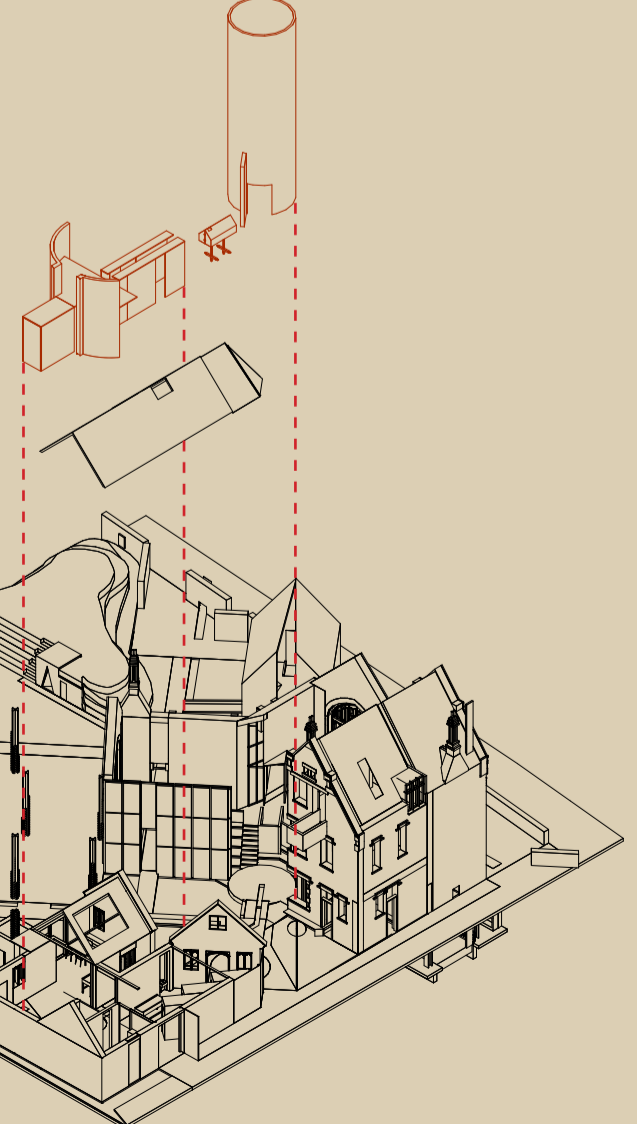
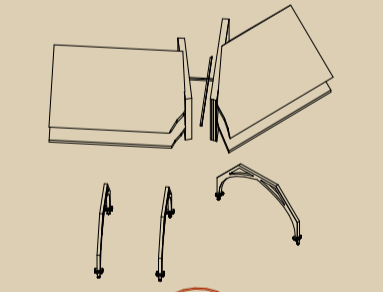
as seen in ... parts III + IV of the Tapestry

follows - the path of the winter solstice moon

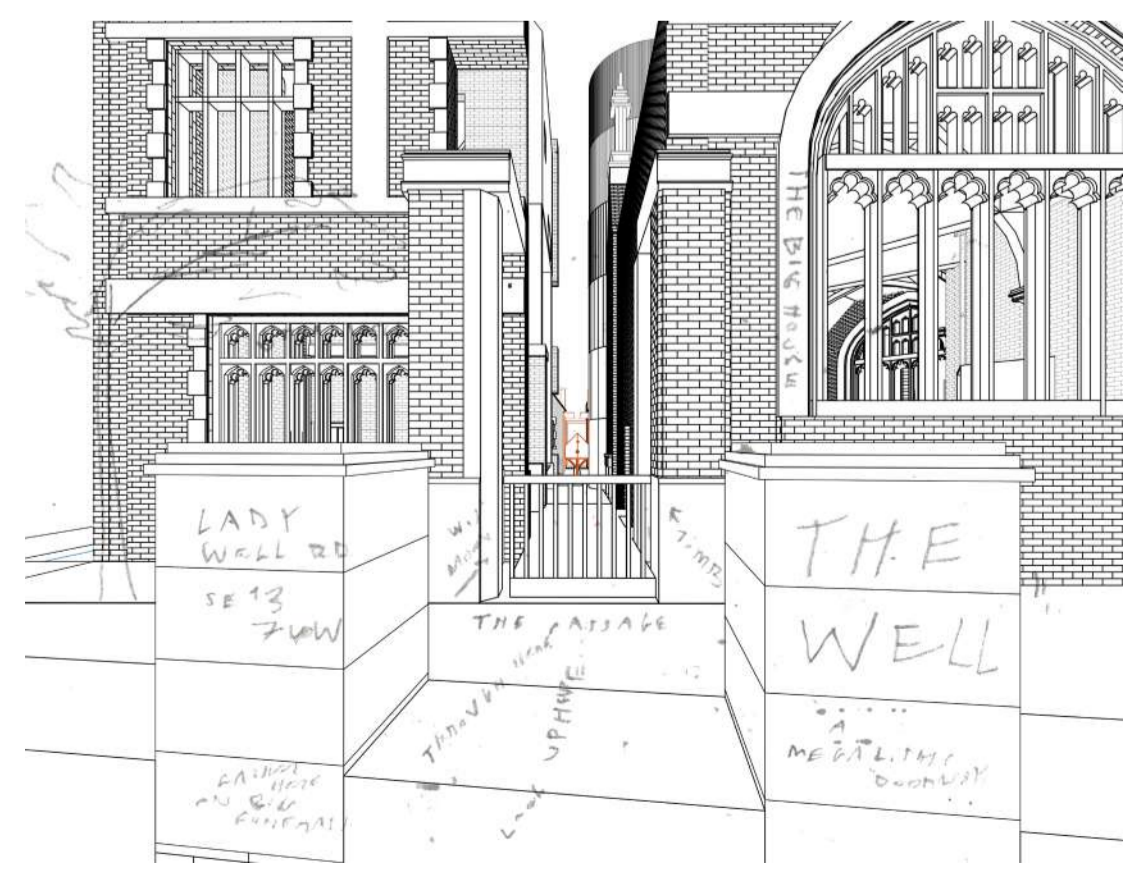
visited - at midnight on the full moon, where it also aligns

for remembrance service - 'the goodbye', loved ones (living) follow the procession device as it makes its way from the Telescope along the water canal through the Tomb. here, it stops for a while to be amongst loved ones (living) before it glides down the passage and out of sight, ready for procession

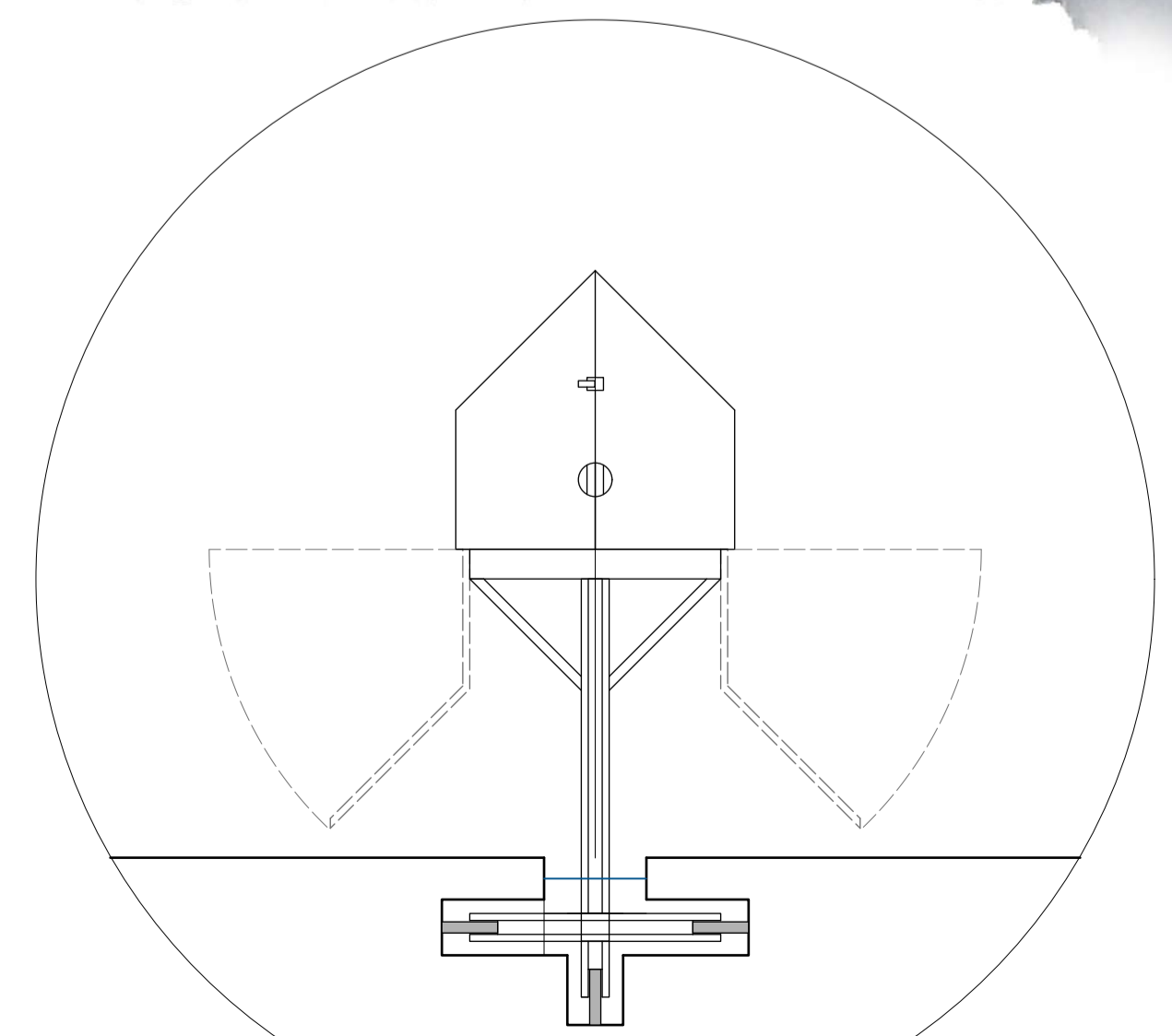
form - the left gable of the Tomb has been shifted so as to face the direction of the Winter solstice sun, the same path we find the Gatehouse on and which splits through the middle of the Big House (see balcony also). the Tomb passage is slotted into the pre-existing 'inlet' which already aligned with these moon related events - a coincidence?



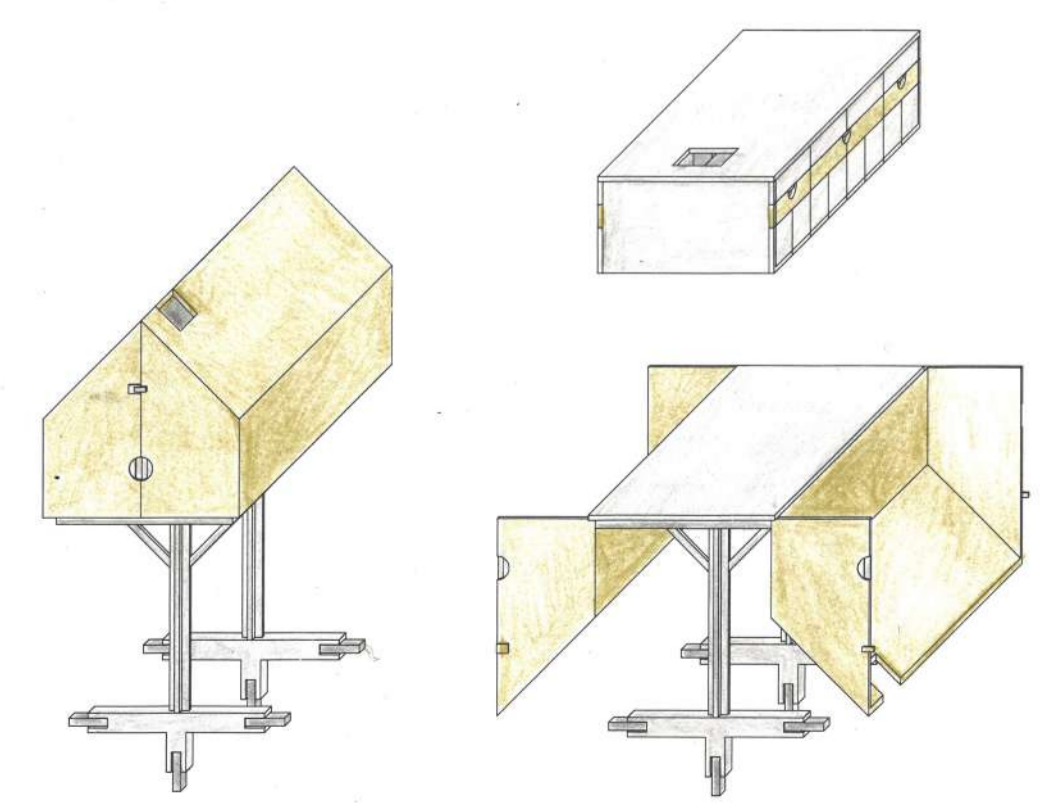
exploded right rear isometric tapestry parts III + IV - the Big House, Telescope + the Tomb



the tomb as seen from Ladywell Rd, through the passage, congregation can gather here for larger services, bridging the gap between public and private

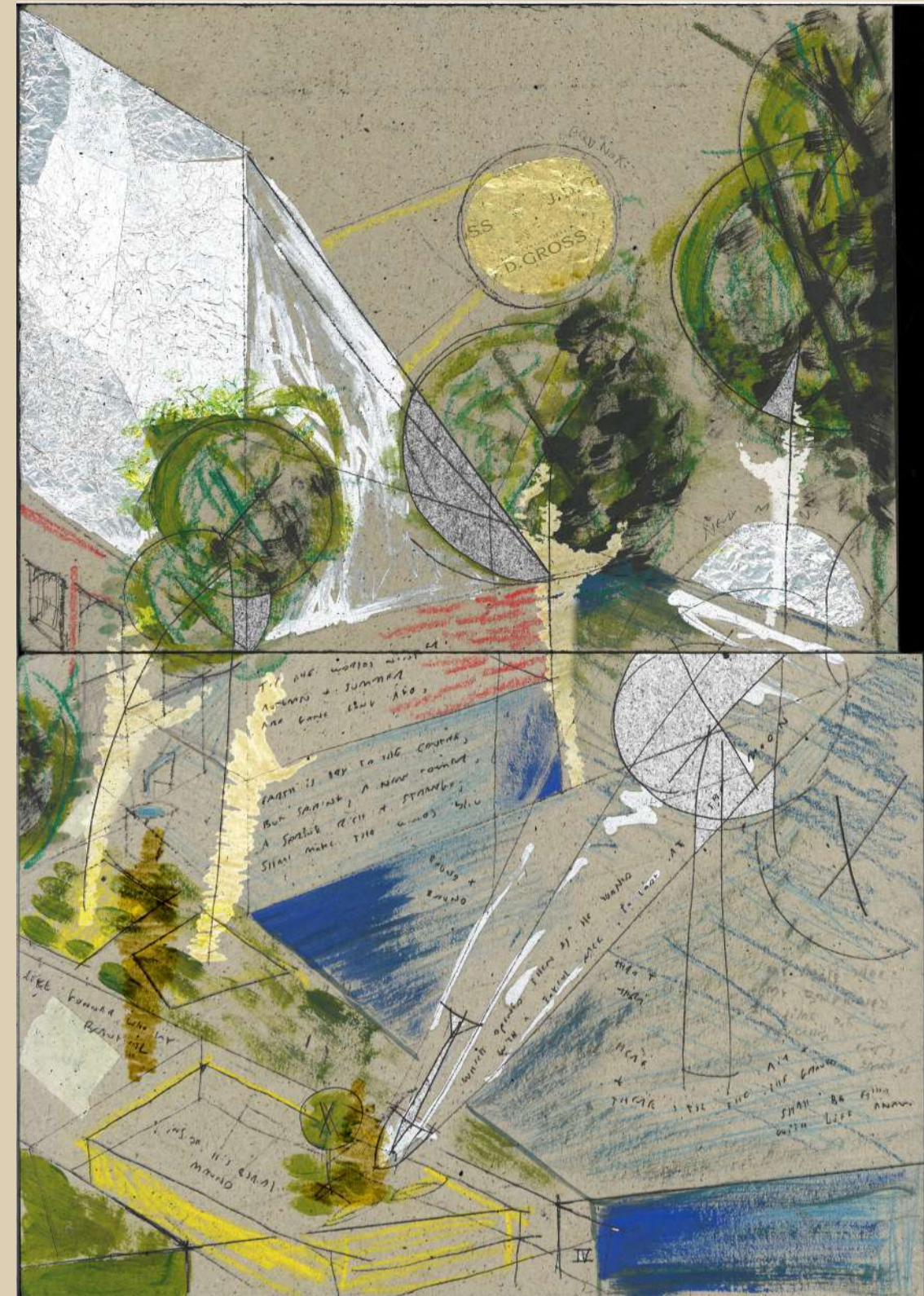


the procession device details @ 1:25



the procession device (exploded) isos

4 - THE FIELD + HOUSE OF THE EQUINOXES



as seen in ... part V of the Tapestry

follows - the path of the equinox sun and moons

visited - initially, on the new moon for burial, afterwards on any phase or any day

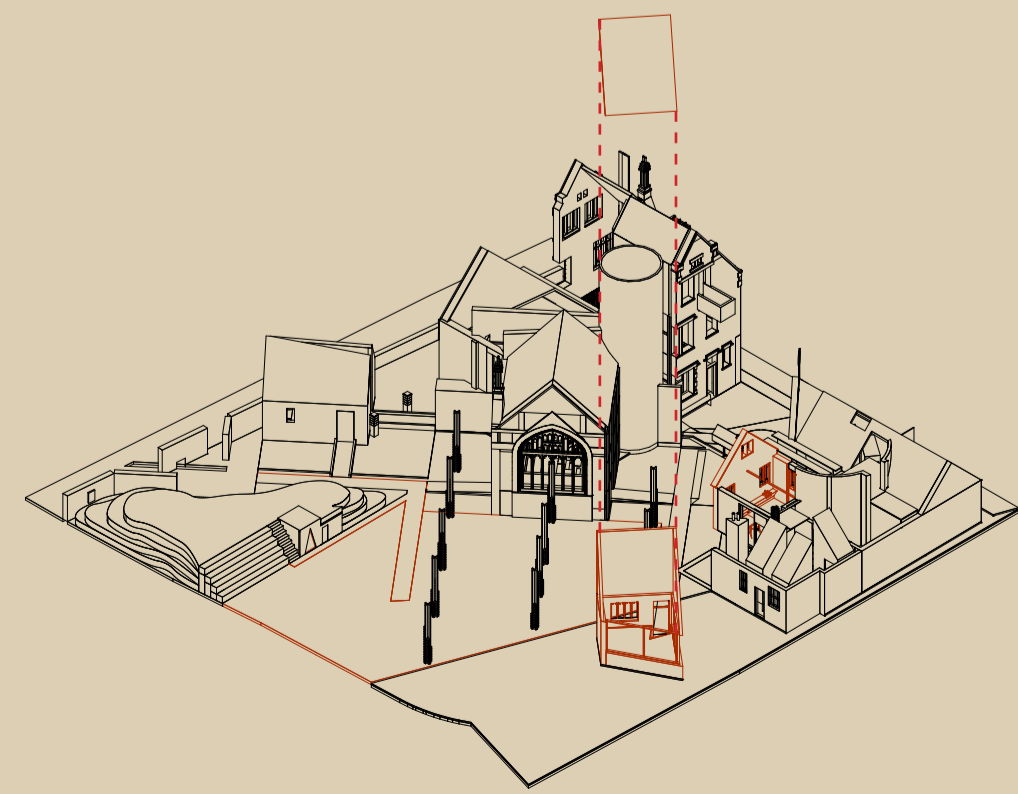
for end of the initial process - a (lunar) month has passed since the death was registered, half a month since the remembrance service. even though it is mostly invisible, burial on this moon phase symbolises the beginning of a new phase for the loved one (deceased) as they enter below earth and start the journey of becoming a part of it once more

the loved one (deceased) / soil is placed inside a decomposable box, lowered in the chosen plot, a tree is planted atop this and watered by the loved ones (living) from water from the House of the Equinoxes, acting as a 'blessing' for the tree's prosperity.

form - the House of the Equinoxes sees part of the existing mortuary split away in order to align with the equinox paths. the room is filled with water to waist height to create an immersive, sensorial space. this is accessed via another balcony-like form. the pillars in the field mimic the upright form of the trees and act as 'markers' in locating your tree. as aforementioned, they are 35 bricks high, acting as a visual reminder of the well's depth above ground at all times.



the Field, over + under-ground - a WIP interior/exterior vision hybrid, mixed media piece



exploded left rear isometric
tapestry part V - the Field + House of the Equinoxes



House of the Equinoxes (as seen in main view) 1:100 working model photographic views, exterior / interior

*'The world was never made;
It will change, but it will not fade.
So let the wind range;
For even and morn
Ever will be
Thro' eternity.
Nothing was born;
Nothing will die;
All things will change.'*

Alfred Lord Tennyson



tree bark / new human skin?
a different way of seeing, of remembering ...



Tapestry panel VI - 'nothing will die'
the people as the trees / the trees as the people