

Archives of Jane's murder and mapping present crimes of violence on site



During the autopsy, Jane's body revealed clean cuts and signs of struggle against violence. As the Coroner described her body in *fragments*, I connected the narratives of the story and the site through materialisation.

Casting my own breast, the sculptural series captures the female body to represent the vulnerability and how it fragments after a moment of violence. Then, capturing the moment of the breast breaking, I created imprints in the landscape that tell the story of the body leaving marks and wonder what remains of it.

## HEALING FRAGMENTS

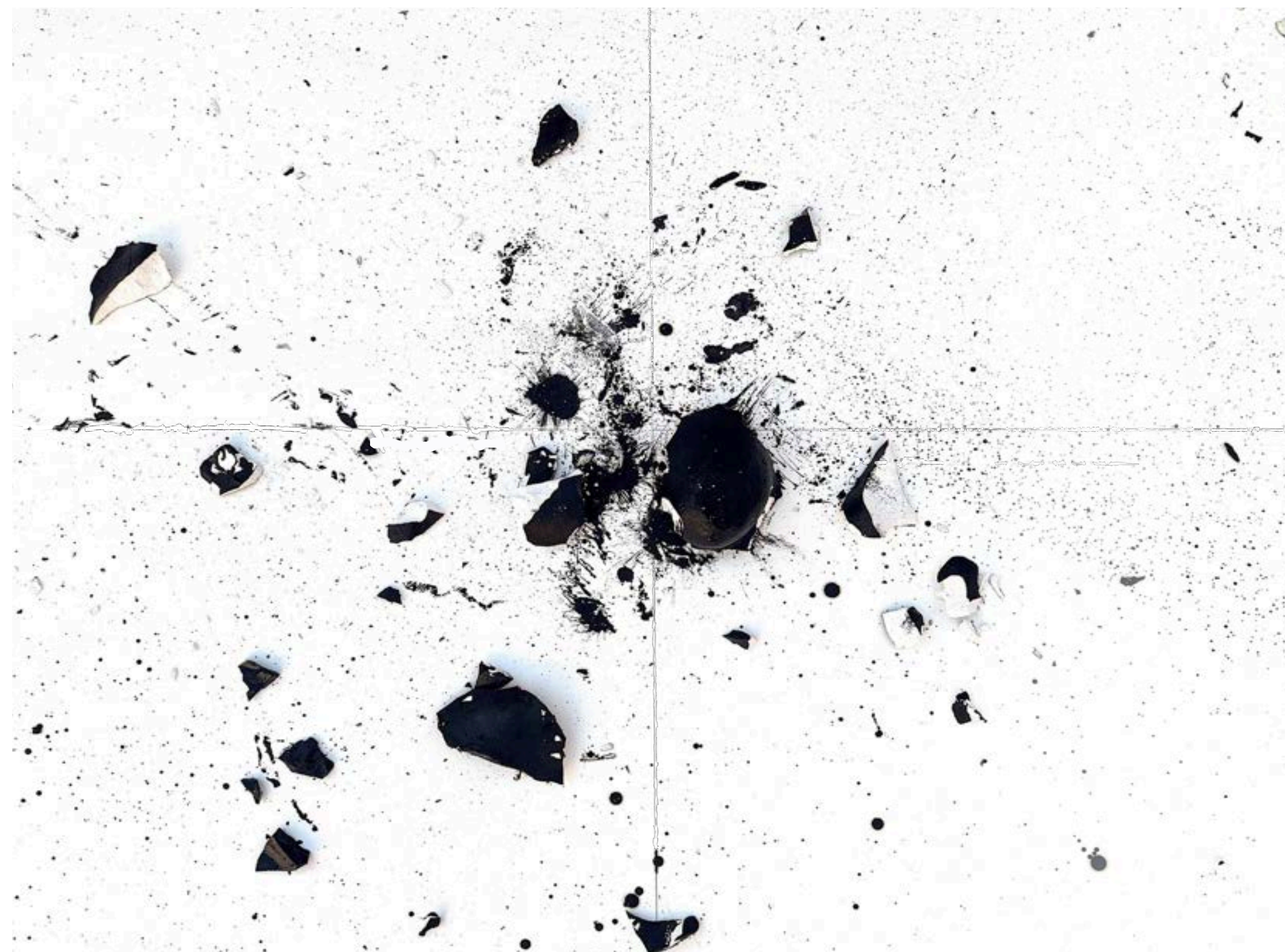
LOCATION: CORONER'S COURT AND MORTUARY IN LADYWELL

The project recognises violence against women as a global issue that transcends time, where the justice systems fail to respond. The narrative is driven by the story of Jane Maria Clouson, a 17-year-old girl found dead in Eltham in 1871. Despite evidence pointing to Edmund Pook as the perpetrator, he was found not guilty at trial. The story not only connects to the past and the site, but also *reveals* the reality of millions of women who experience violence.

A *dialogue* between the past and the present is built through a memorial and a women's shelter. The spaces are connected by a scaffolding structure that creates vertical *connections* and acts as a metaphor for the body's *reconstruction*.

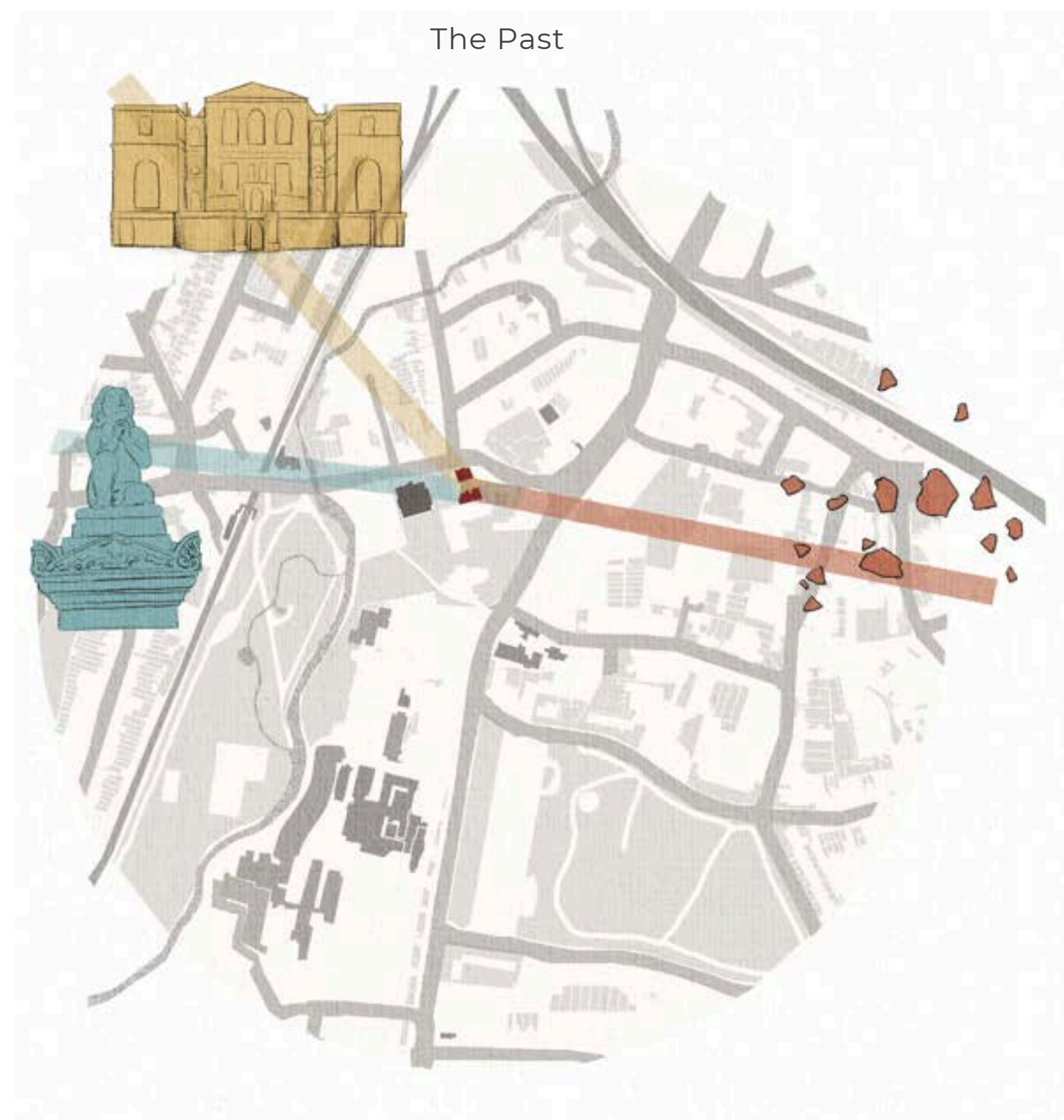
The memorial creates an *emotional journey* that connects to the key moments of Jane's story: The Trial, The Grave, and The Crime Scene. The visitors move through narrow spaces, where the use of light and materiality seeks to evoke a sense of empathy and potential for hope into the future. Dissolving the *boundaries* and giving voice to women in a patriarchal society.

As an act of 'rising from the ashes', the shelter provides a safe space for women in the area who are currently facing violence, creating moments of transition and intimate connection as women heal. The project imagines 'healing pods' as *thresholds* for containment, regaining confidence, and reintegrating into society.



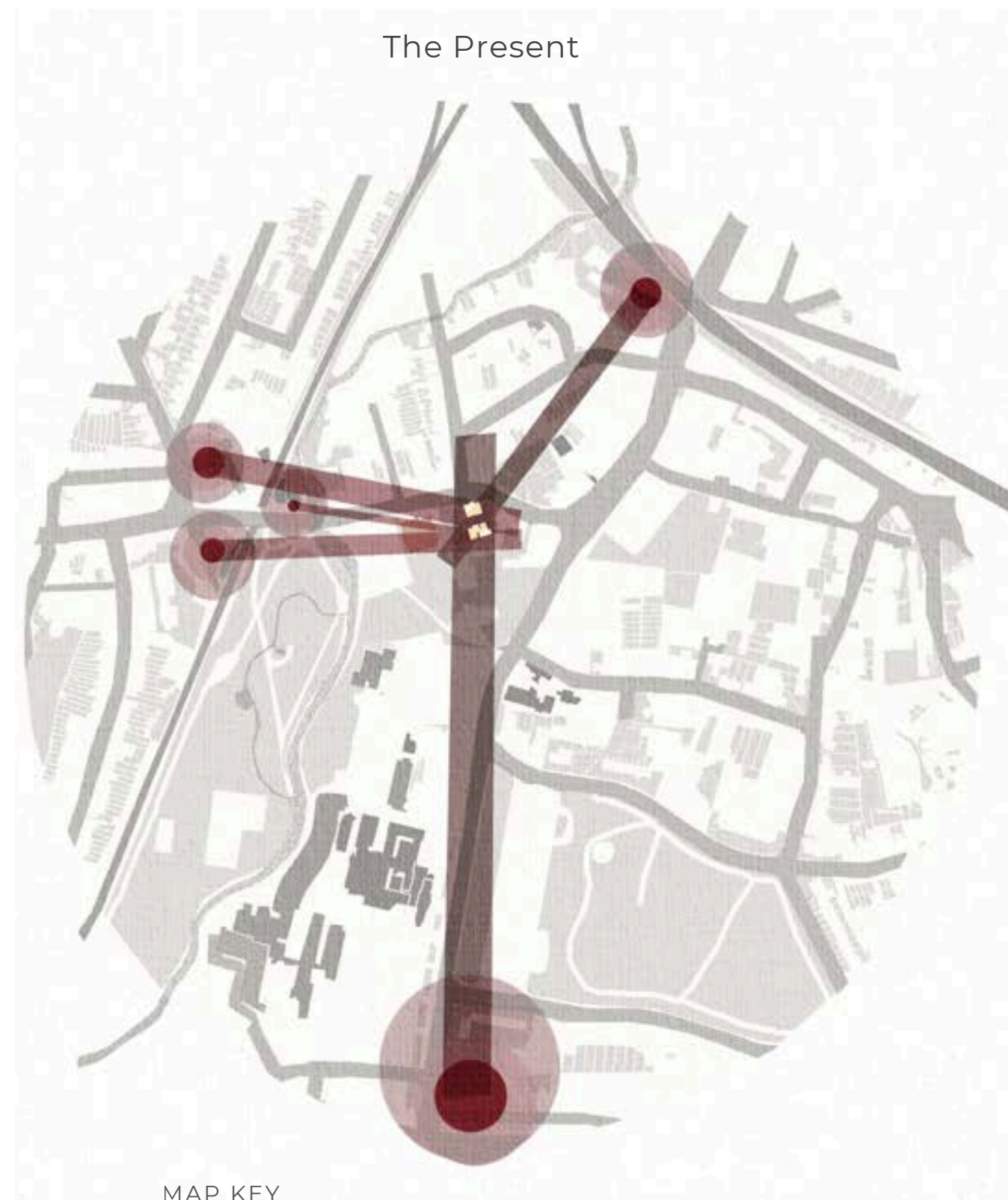
Layering key moments of Jane's story, breast fragments and imprint

A MEMORIAL AND A WOMEN'S SHELTER COME TOGETHER



MAP KEY

- Site
- Old Bailey Central Criminal Court
- Grave | Ladywell Cemetery
- Crime Scene



MAP KEY

- Lewisham Park 35 p.m.
- Lewisham High St. 20 p.m.
- Ladywell Rd. 5 p.m.

Mapping connections between the past and the present through Jane's story and the current hotspots for violence and sexual crimes around the site.



The Archive - Memorial Interior View

THE VISITOR



**The Young Adult (18-30)**

- To educate
- To be proactive in building a safer environment
- To incentivize equality
- Preventive measures
- Learn about violence



**The Local (30-50)**

- To help men be empathetic with other women going through violence
- Promote healthy relationships
- Breaking boundaries

THE USER



A 34-year-old woman is in an intimate relationship in which her partner has controlled the money for years. Over time, she has become more isolated, and the abuse has escalated to physical threats.

She needs a safe place for her and her children to rebuild her life.



A 17-year-old girl was walking back home when a stranger abused her. She does not know what to do or whom to talk to. She feels disconnected from her own body and needs to seek psychological assistance.

She needs a safe space to regain self-esteem and feel a sense of community.

THE STAFF



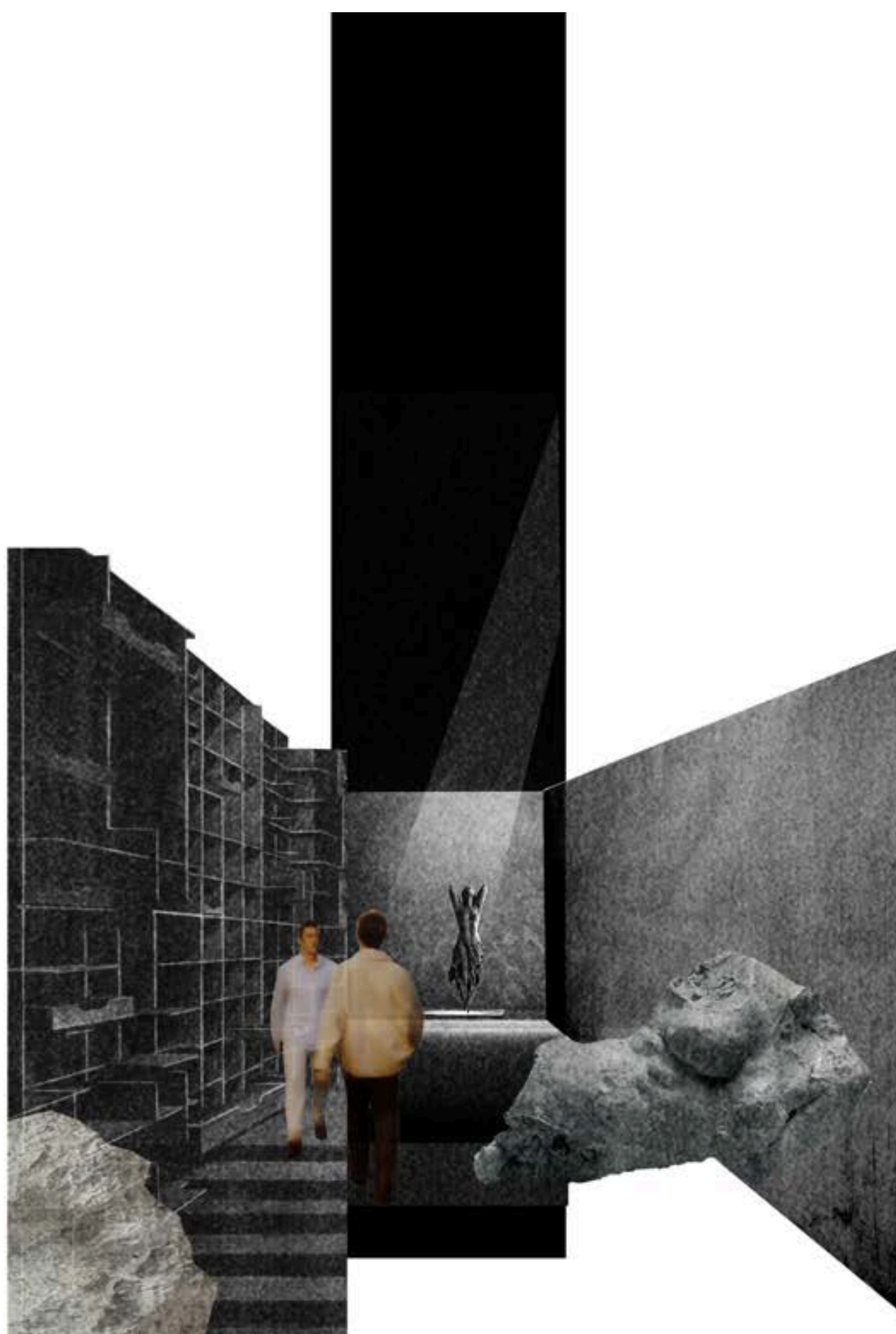
**The Therapist**

- Provide emotional guidance
- Hold group therapies
- Refer to support systems



**Workshop leader**

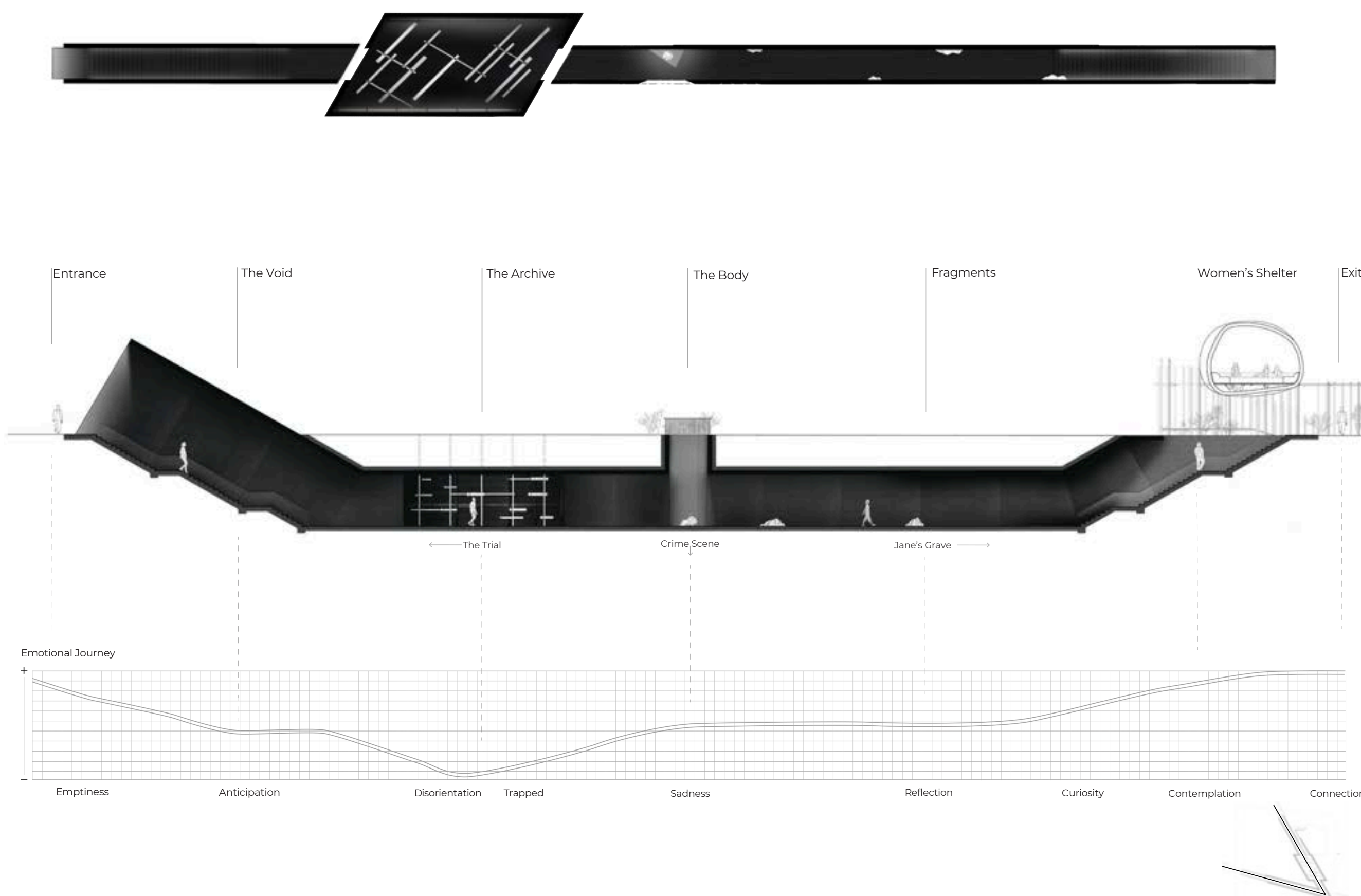
- Hold educational workshops for both users and visitors
- Promote economic independence and literacy



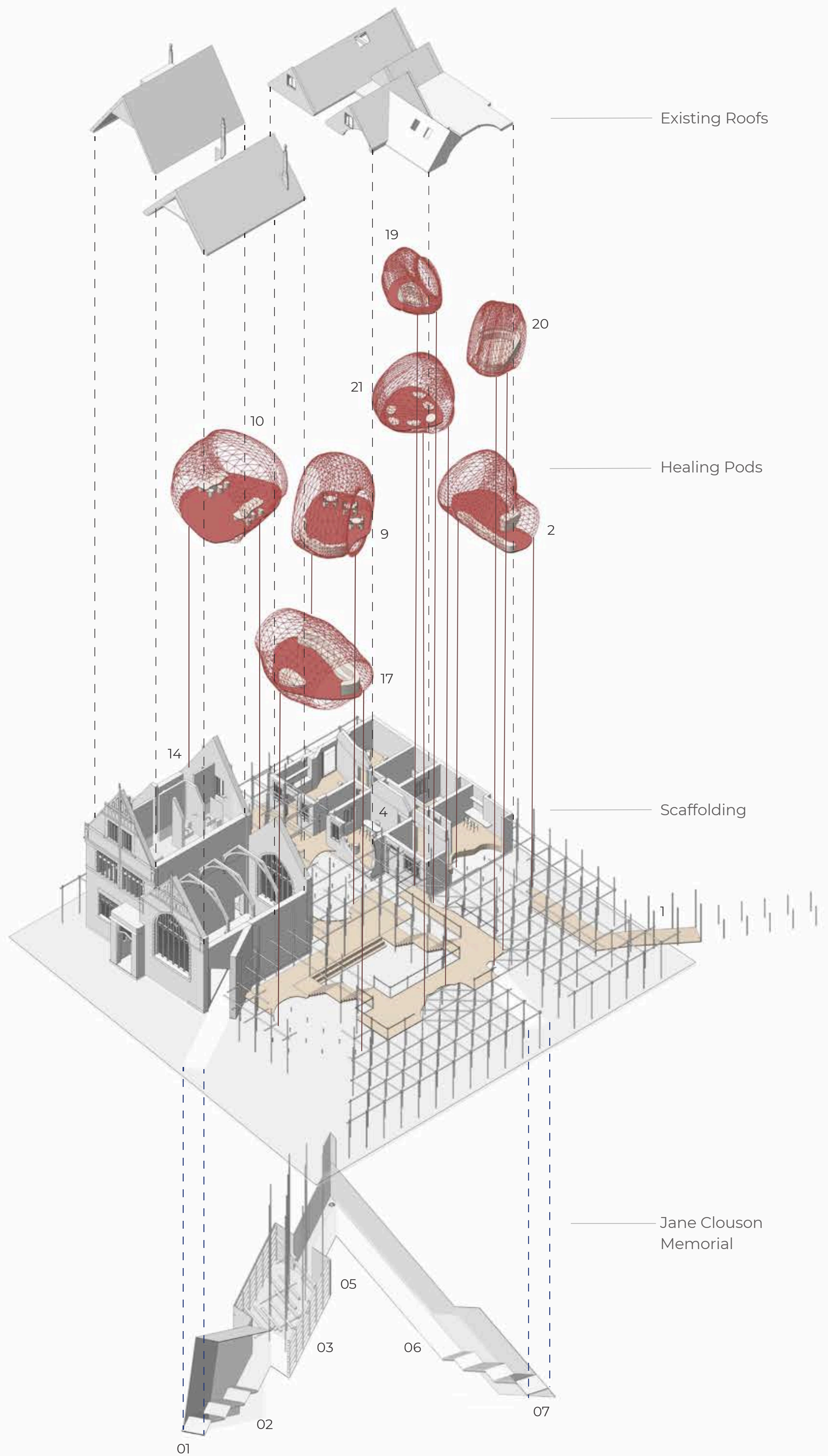
The memorial creates an emotional journey for the public to walk through dark and narrow spaces that interpret the story of Jane.

The shelter provides a safe space for women in the area who are currently facing violence. Providing support and a sense of community as they reintegrate into society.

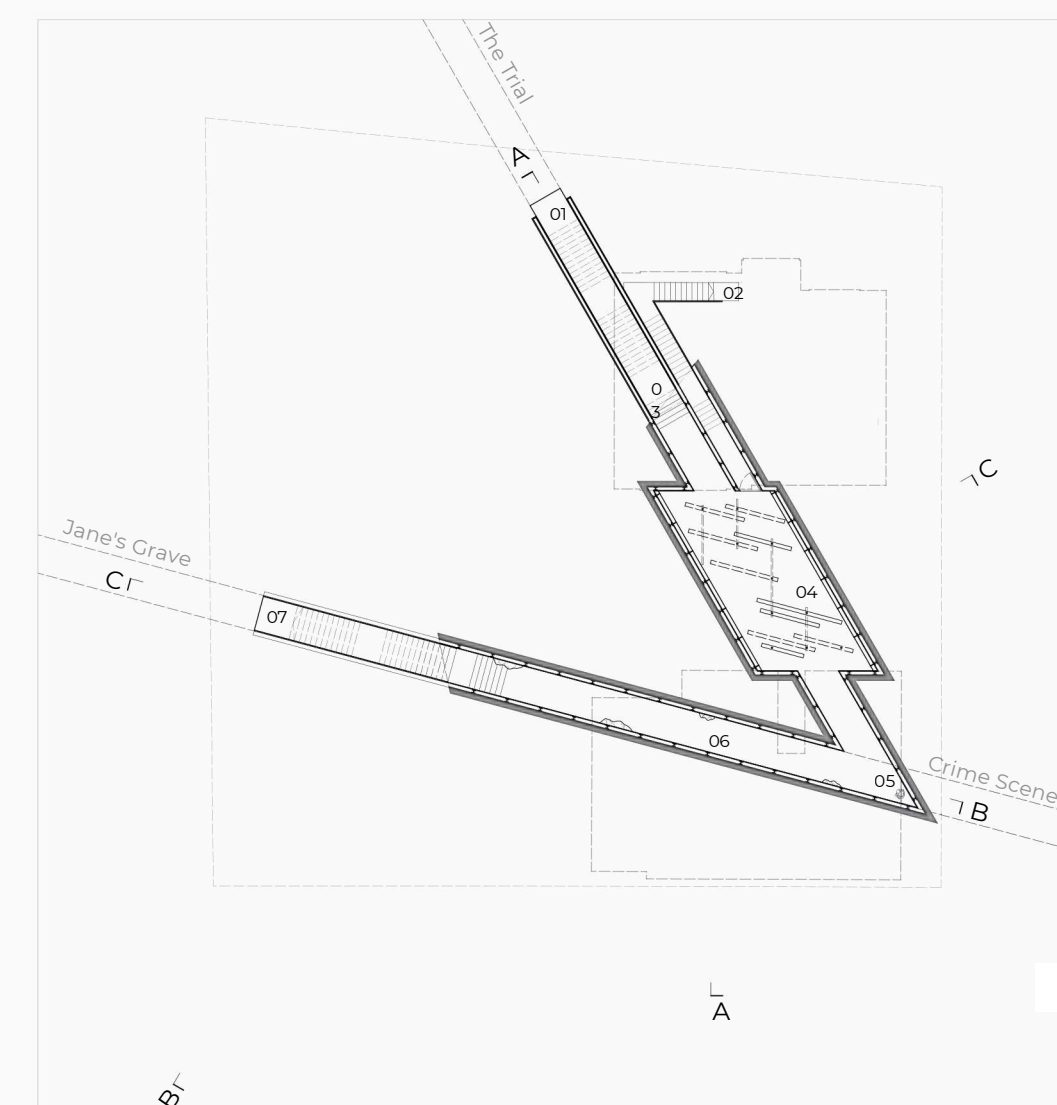
EMOTIONAL JOURNEY - MEMORIAL SCHEMATIC DIAGRAM



THE PROPOSAL



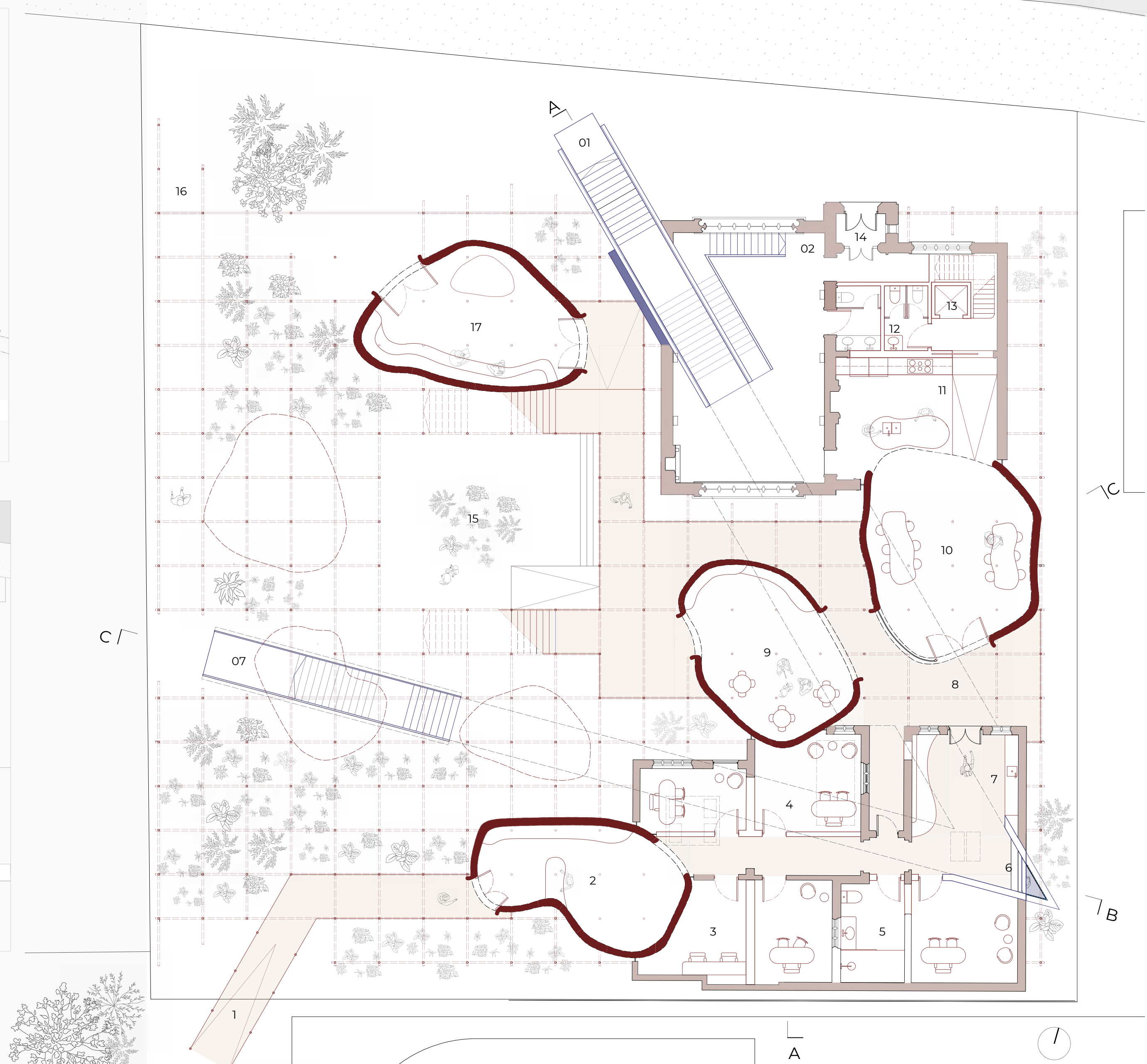
Underground Plan



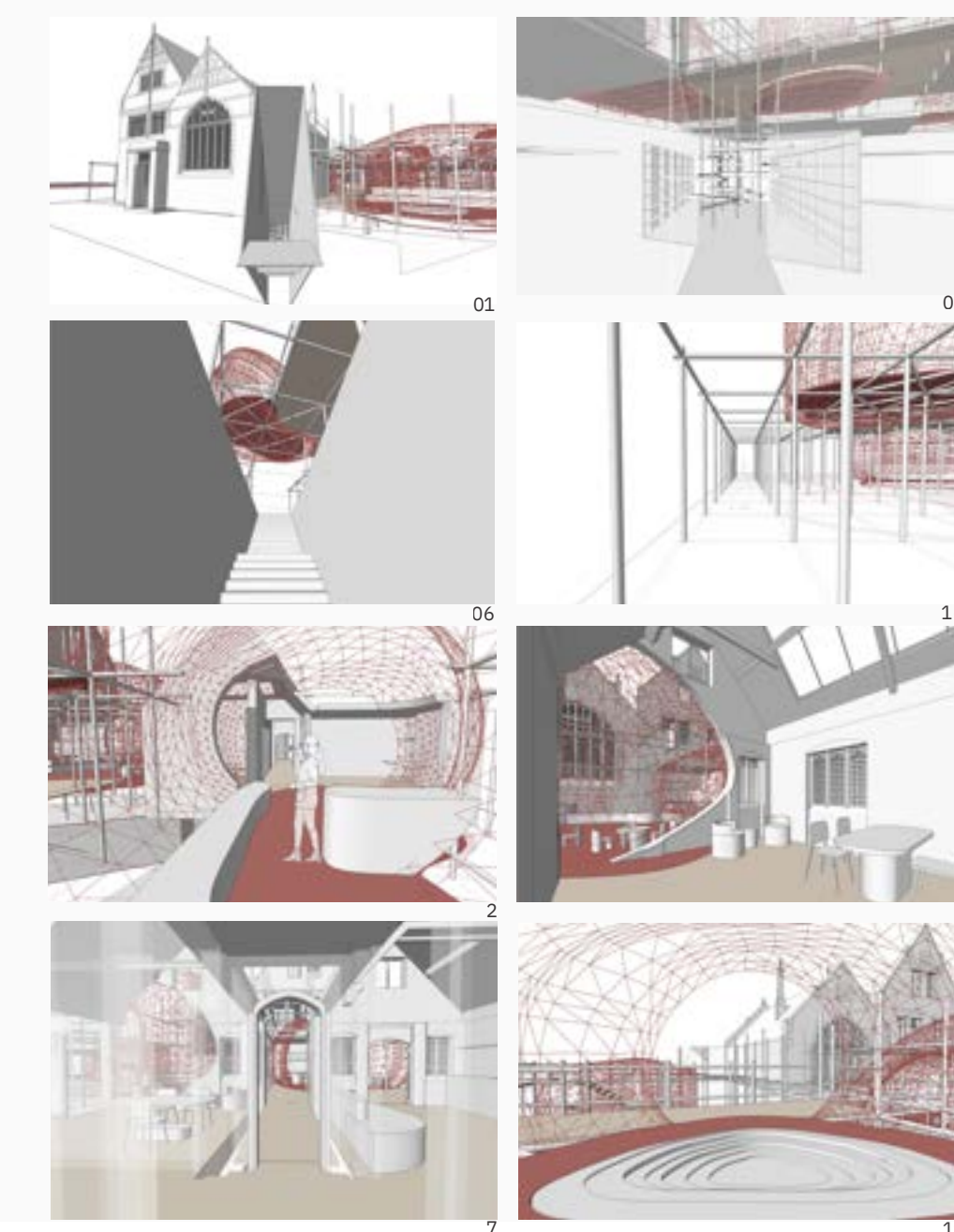
First Floor Plan



Ground Floor Plan



Storyboard



-1 | Jane's Memorial

- 01. Public Entrance
- 02. Staff Entrance
- 02. Void
- 03. Archive
- 05. The Body
- 06. Fragments
- 07. Public Exit

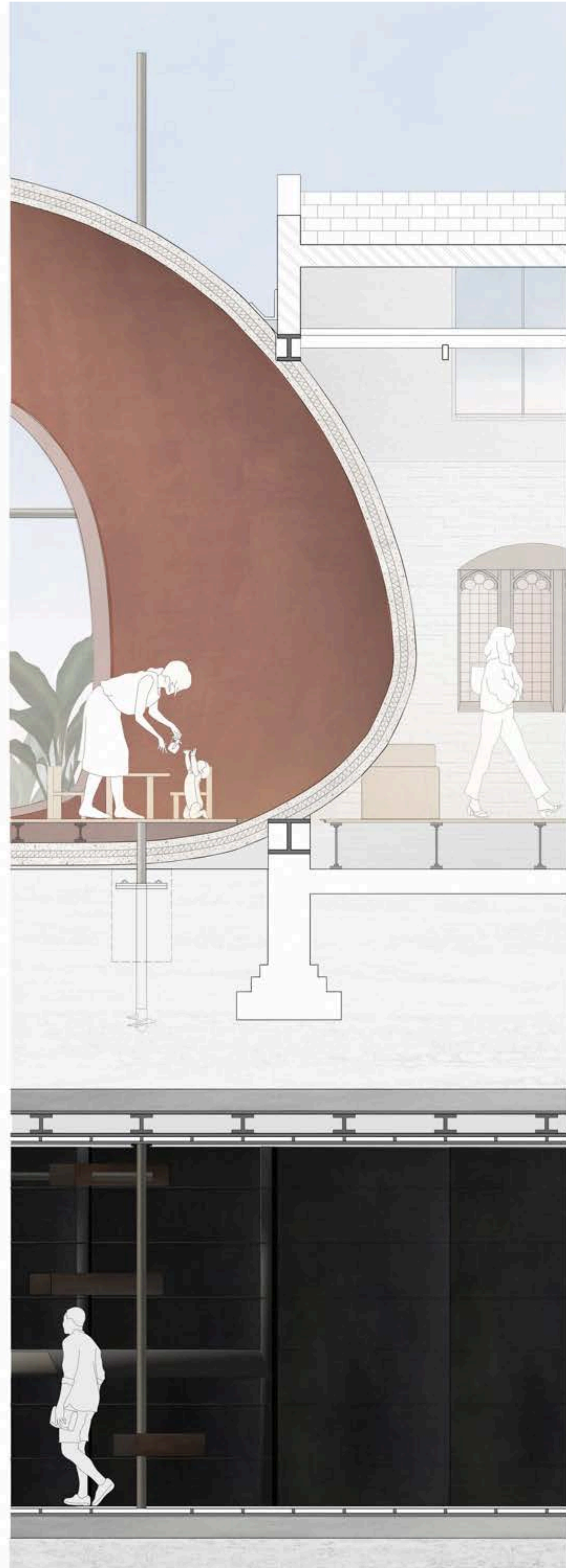
0 | Women's Shelter

- 1. User Entrance
- 2. Reception
- 3. Staff Office
- 4. Counselling Rooms
- 5. Disabled Toilets
- 6. Connection to The Body
- 7. Coffee/Tea Station
- 8. Walking Platform
- 9. Playroom

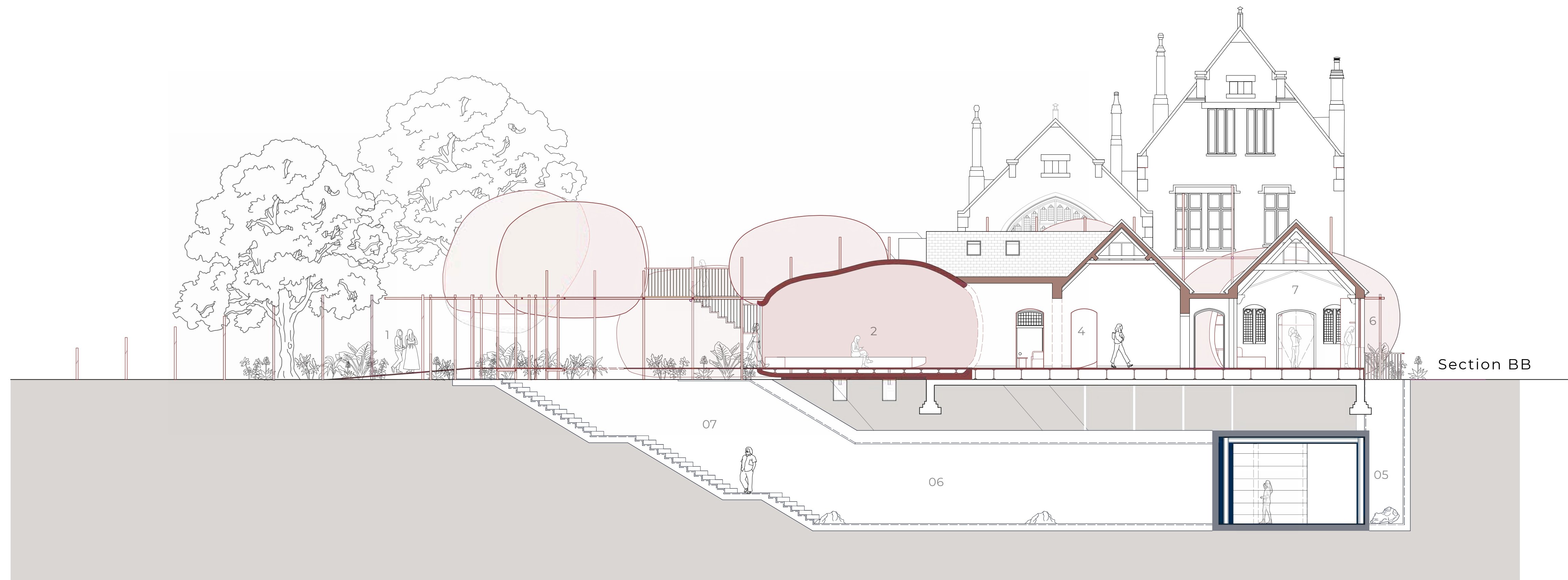
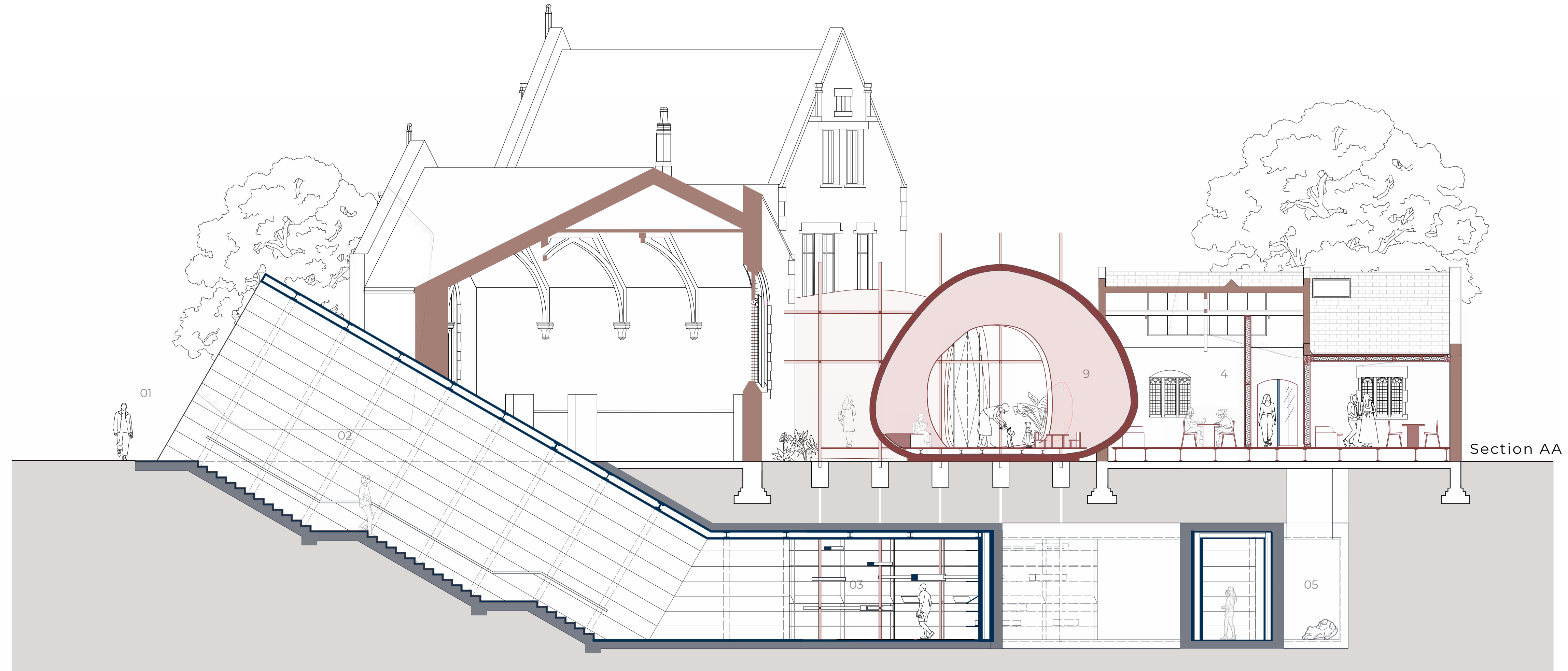
1 | Women's Shelter

- 10. Communal Dining
- 11. Communal Kitchen
- 12. Toilets
- 13. Lift/Stairs to Accommodation
- 14. Staff Entrance
- 15. Courtyard
- 16. Public Corridor Exit
- 17. Public Engagement
- 18. Accommodation
- 19. Intimate Group Therapy
- 20. Group Therapy
- 21. Group Workshops

THE PROPOSAL



Focus Area Detail



Section BB



Walking through scaffolding



Counselling Room



Healing Pod