

# Rethinking the Agora

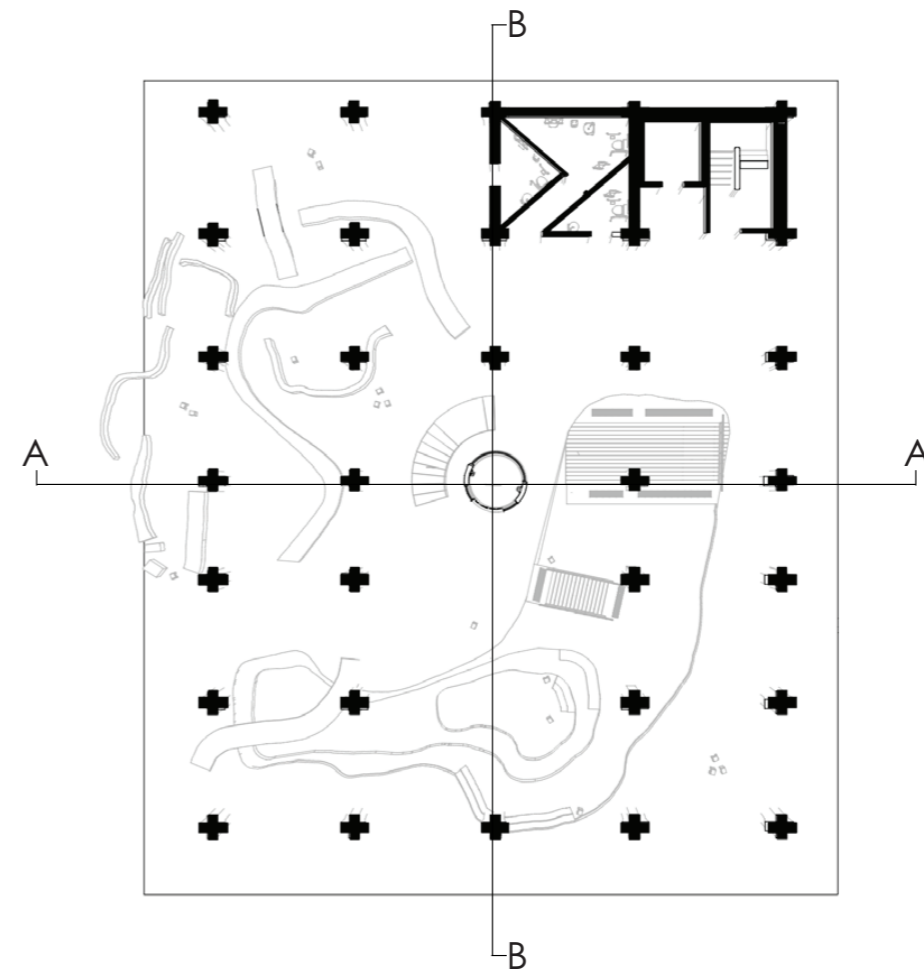
Project by: Lynn Ooi, UWE Bristol



The current socio-economic framework generates an artificial scarcity in order for neoliberalism to continue profiting and growing (Hickel, J. 2021). From the privatizing of land to public facilities, the urban design of Bristol city center today has much fewer quality public spaces to offer - a lack of sheltered spaces, rest, and recreational areas. I have chosen to explore and experiment with ways to open up existing spaces within Arncliffe, by rejecting scarcity in my design. Well-being in spatial designs will be explored by implementing the act of play as a focal point of my reconstruction of space.

I reference projects such as the Caixa Forum in Madrid as well as the Serpentine Pavillion in their approach towards meaningful conservation and intervention. The original fabric of the ground floor is taken apart and existing structural columns are retained and turned into concrete arches with cast U

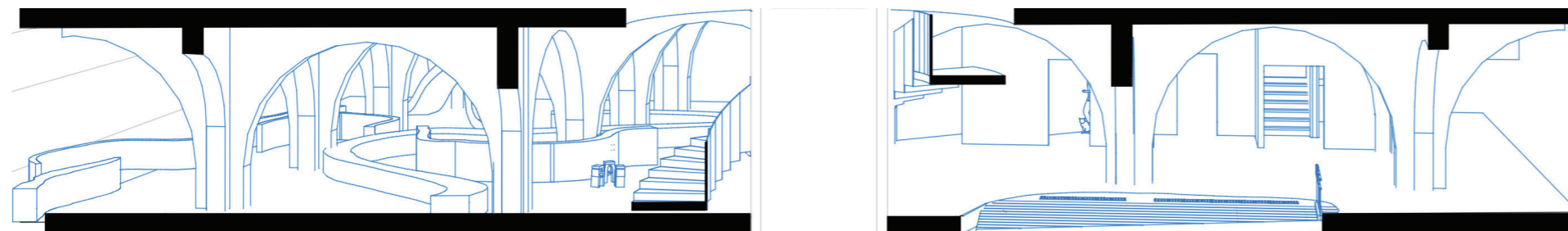
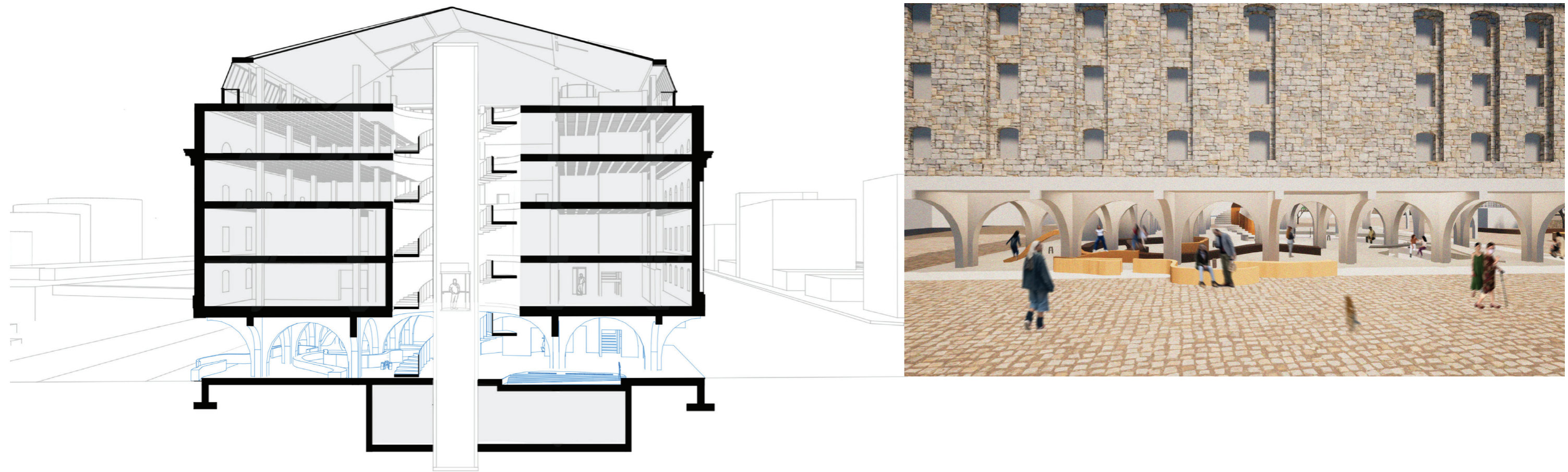
beams as the main structural support. The entrance is now expanded from two points of entry to all sides of the building, communicating invitations to passers-by and attracting art enthusiasts to approach. The building now exudes architectural quality alike the ancient Greek agora, an open space that holds public gatherings and discussions. I started viewing the ground floor as a landscape and extracted elements from the changes in topography and maps of Bristol, cutting into the ground as well as extruding forms of the old River Frome to turn into modular furniture. The space is then split into two main sections, one hosting play, and the other hosting talks and discussions.



Left: Interior view for the Agora  
Right: Plan view of the ground floor Agora

# Rethinking the Agora

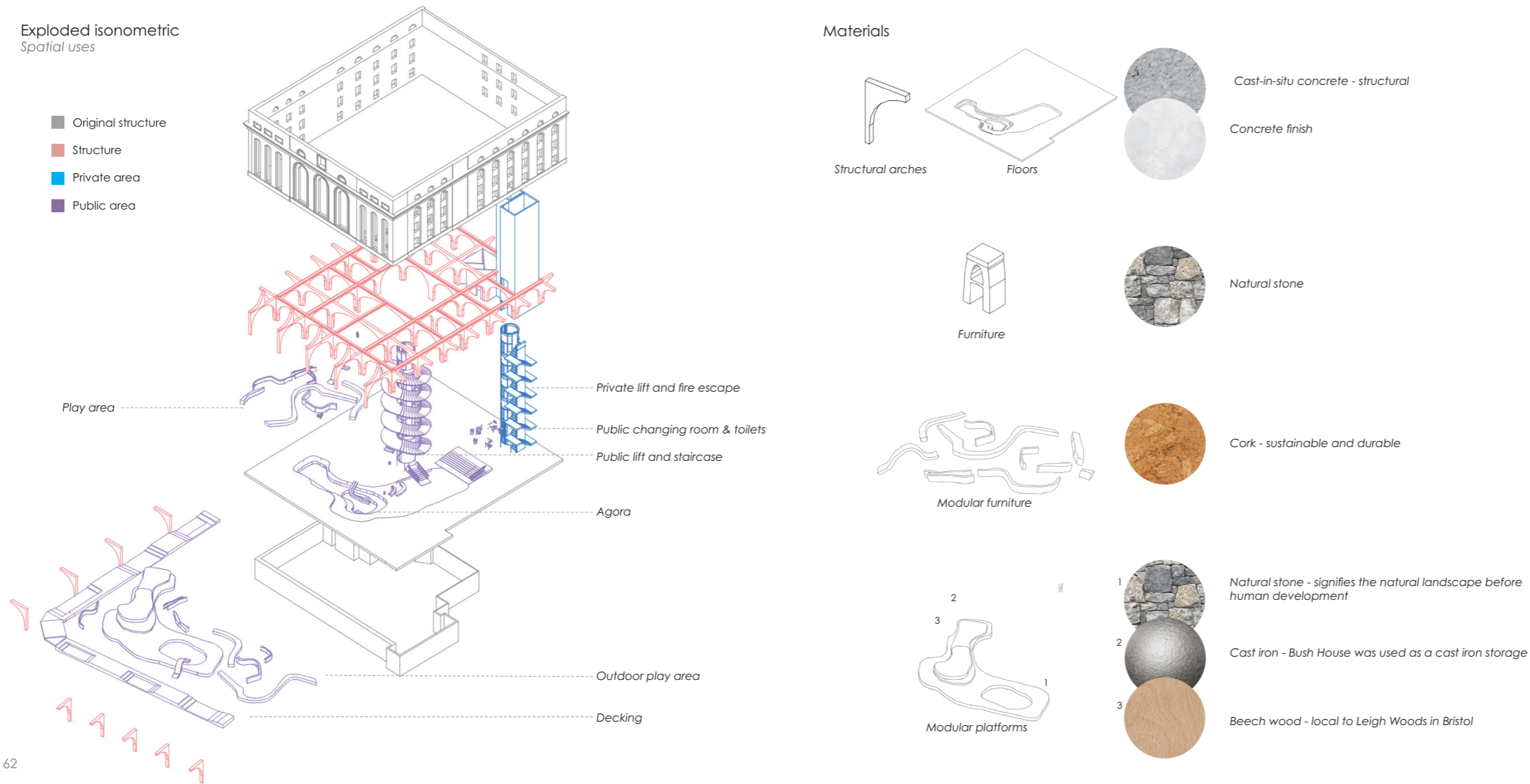
Project by: Lynn Ooi, UWE Bristol



Left : Key section (A-A) of the Agora  
Right: Rendered perspective.

# Rethinking the Agora

Project by: Lynn Ooi, UWE Bristol



Above: Exploded Axonometric with material analysis  
Below: Interface of the Agora with the Bristol Harbourside docks.

# Rethinking the Agora

*Project by: Lynn Ooi, UWE Bristol*



*View of the Atrolfini and its public Agora from the Birsotl Harbourside.*