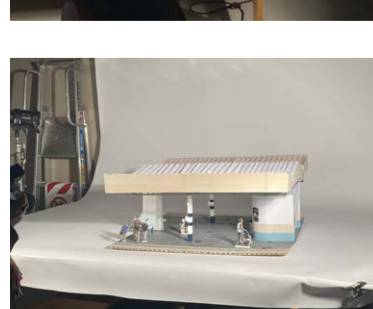
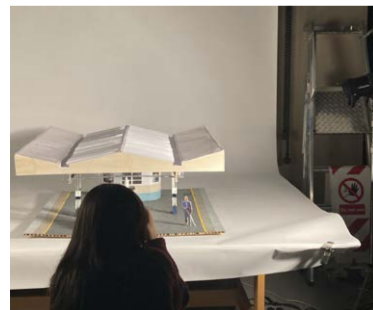
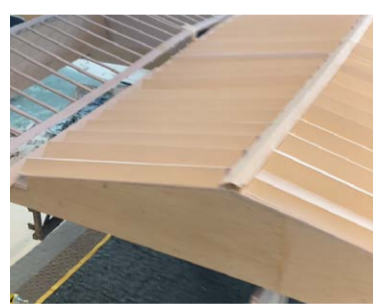




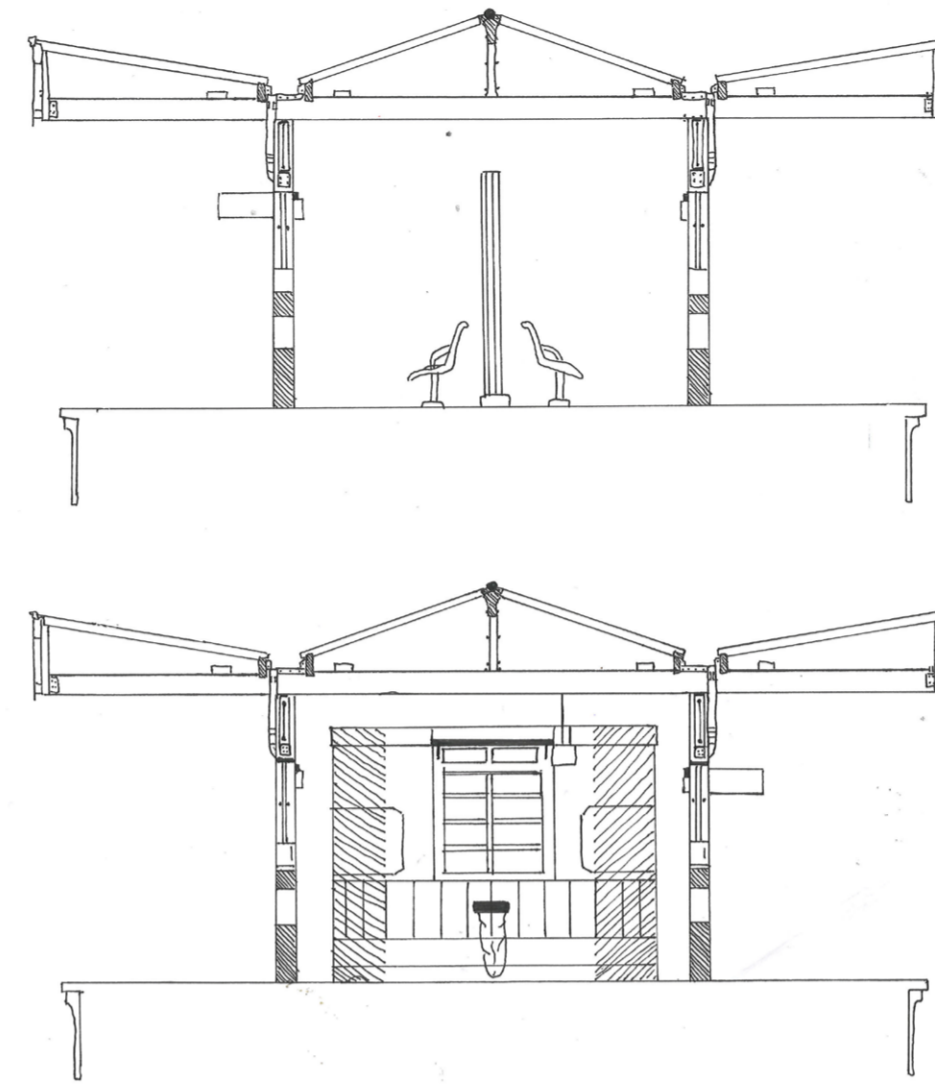
Richlite: Layers of Tomorrow

Richlite is a sustainable material made from layers of recycled paper pressed together with resin. This exhibit challenges common perceptions about default materials such as plywood or osb, which consume precious environmental resources, and instead presents a viable alternative. My design evolved from a simple layout that created an enclosed space into a more open design. The aim was to make the space more open and attractive for passengers, that would be pulled into the exhibit from any direction, but also to make the wooden structure more strategic and easily dismantlable, to ensure sustainability in its move, reuse or recycling.

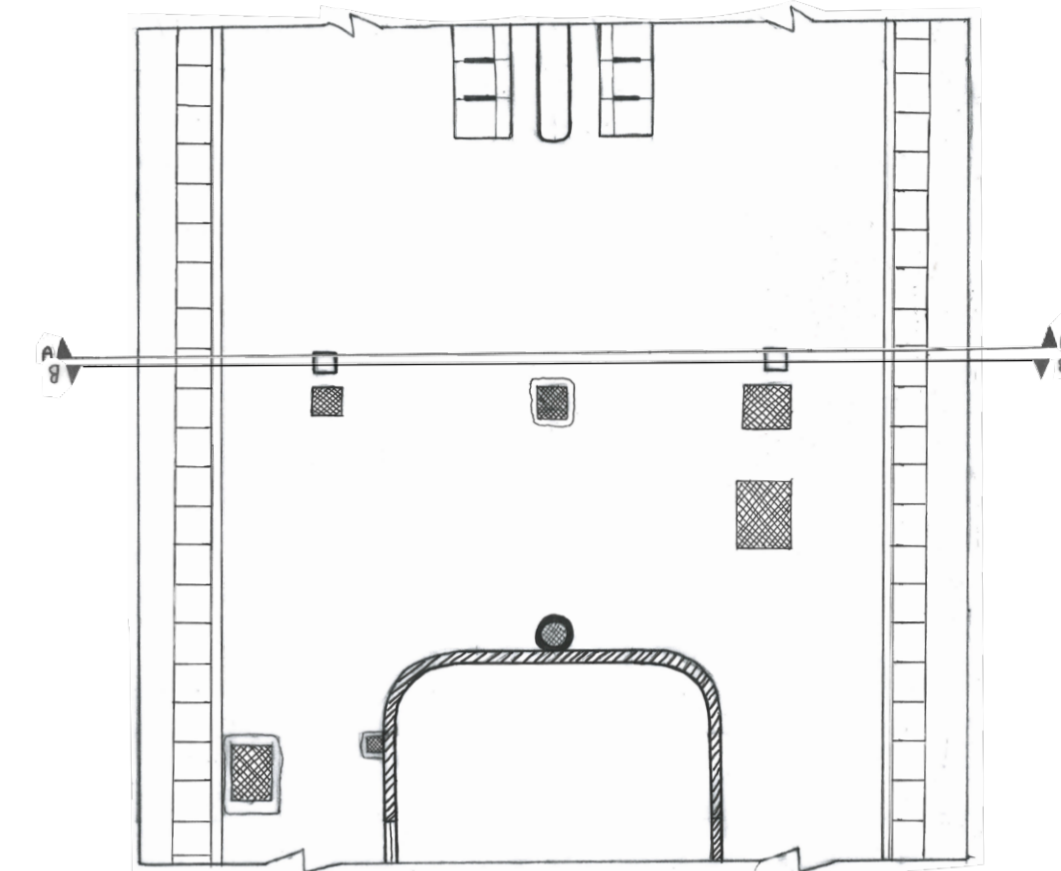




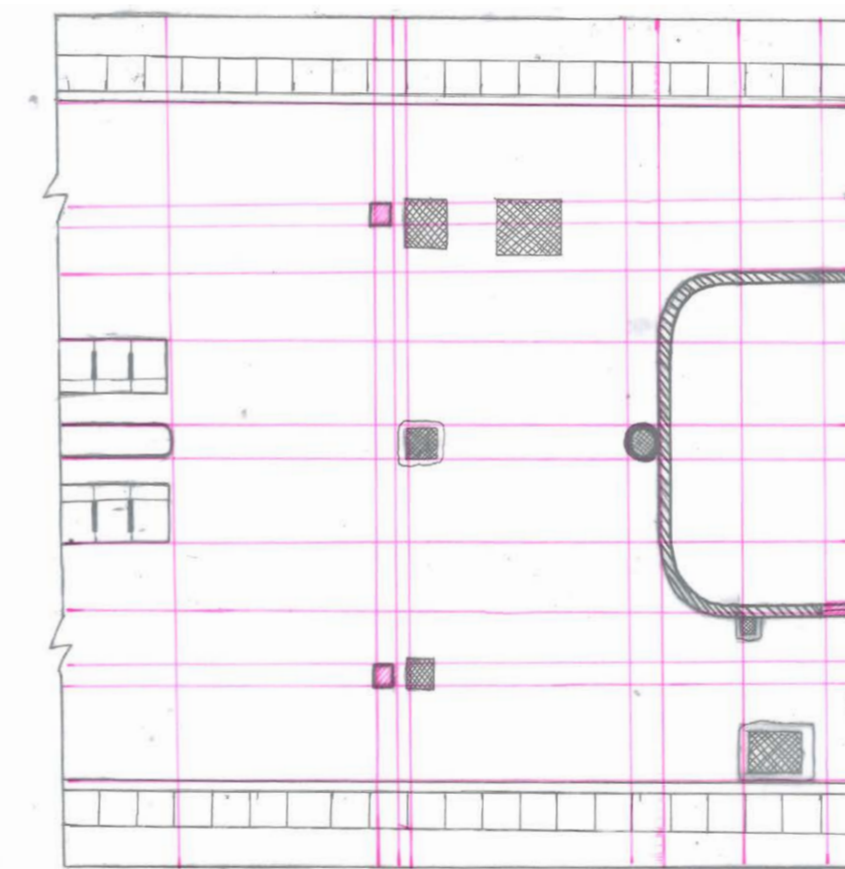
2. Site Analysis



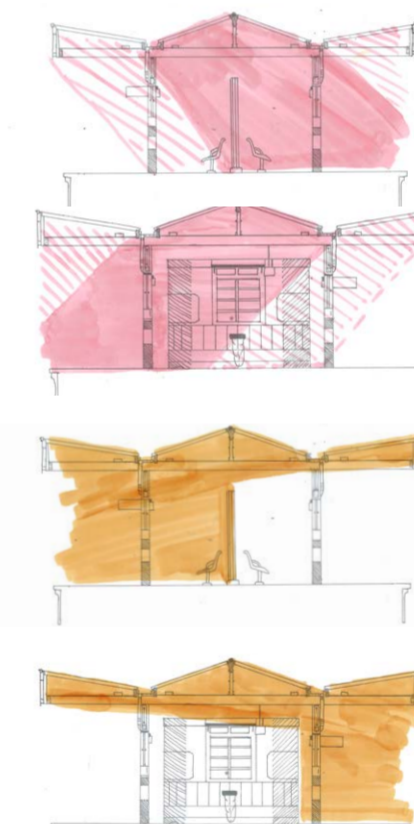
2 Sections AA & AB of Platform
1:50 @ A2



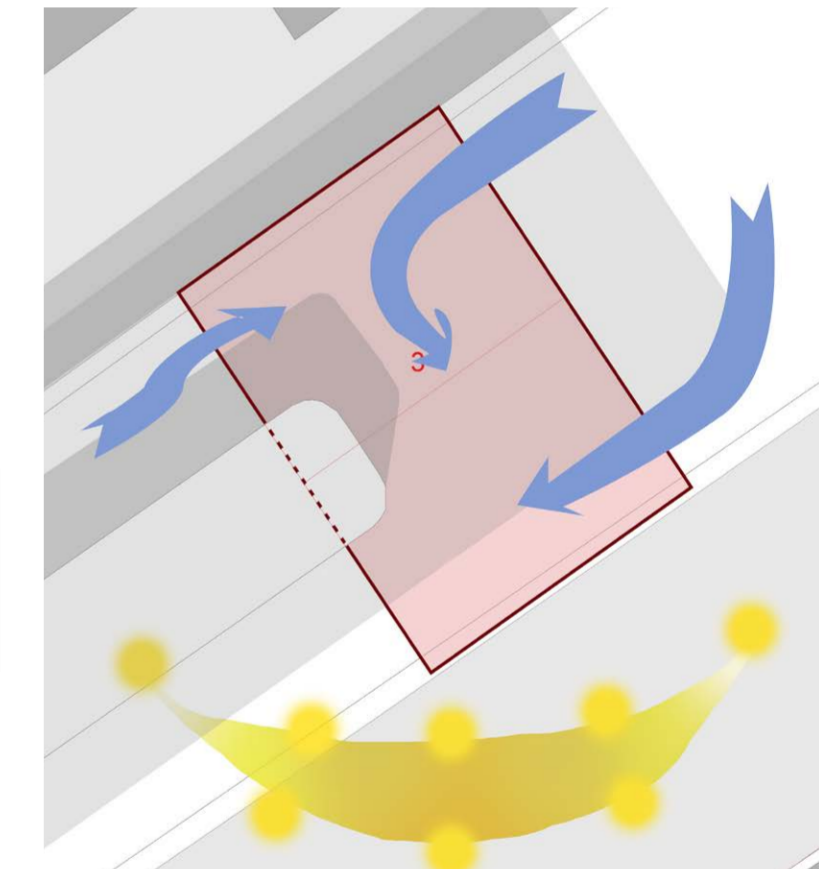
1 Plan of Sorbiton Station Platform
1:80 @ A2



Alignment grid



Sun path diagram: Sections



Sun path diagram: Plan

a. left view of the station platform with the waiting room space and its window

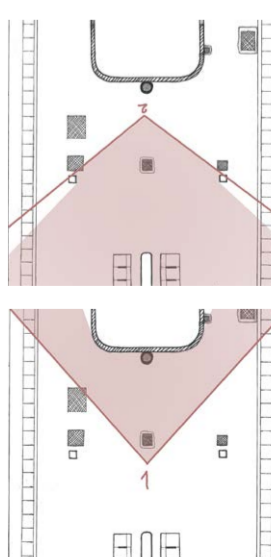
b. view of the roof's transparency on the edge of the platform, with the effects of light passing through it

c. right view of the station platform with the waiting space and its window

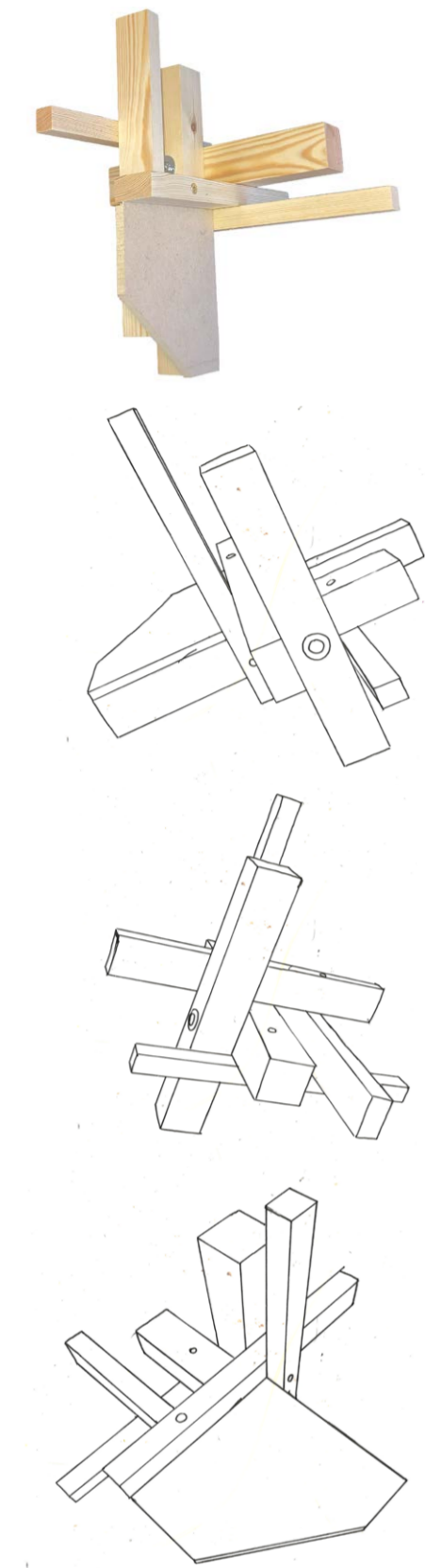
d. large view of the site model with sitting waiting space and the interior waiting area



Material and color palette with key views of the platform



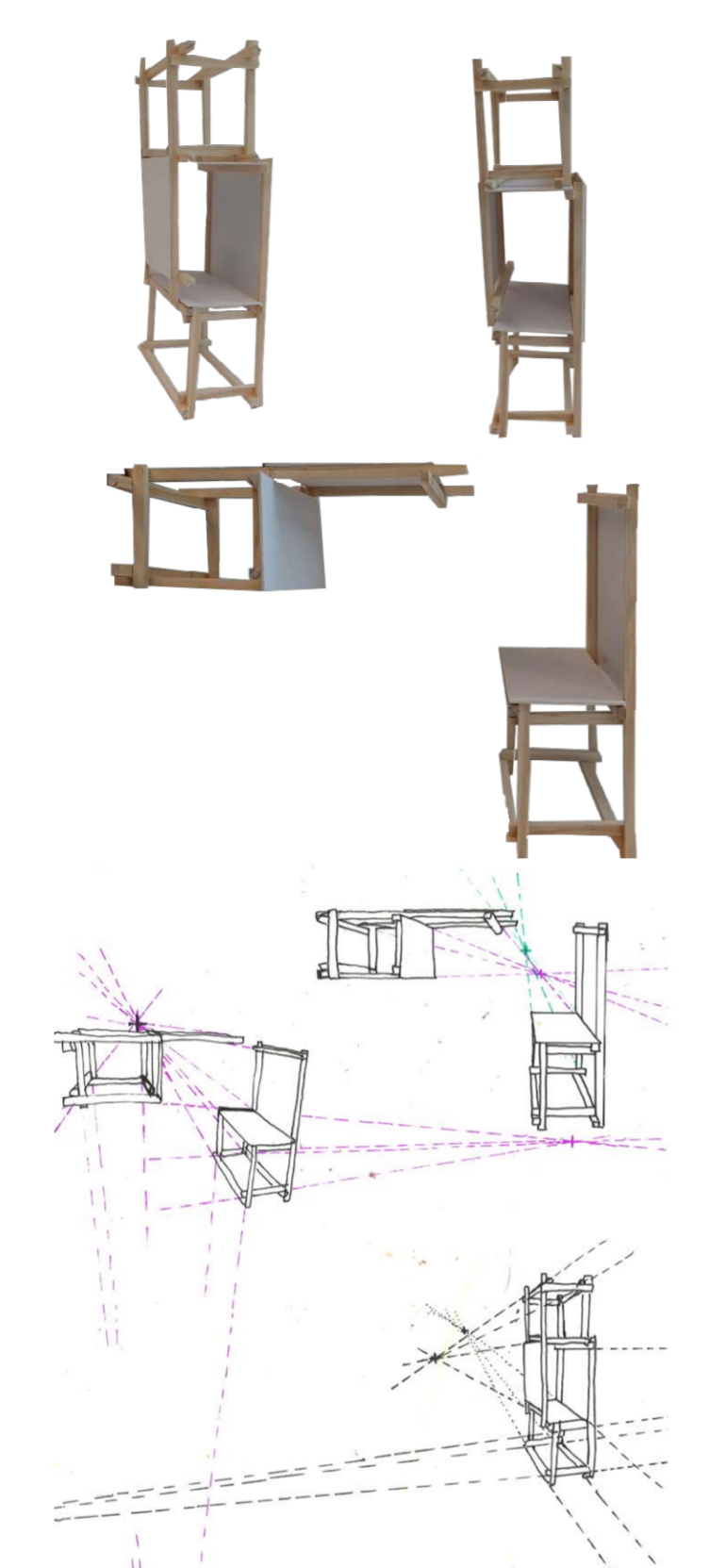
Model and drawings of a specific joint, aiming to understand the dynamics of the design in detail



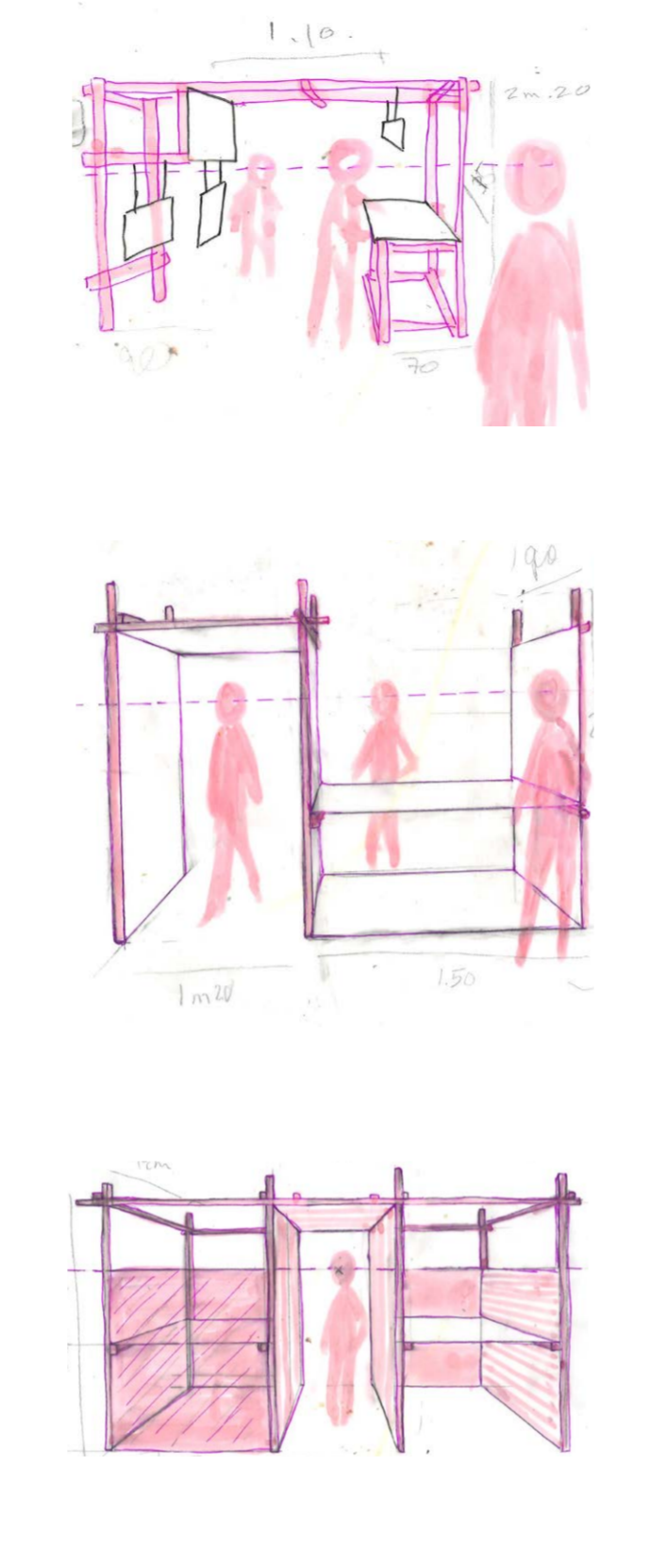
Isometric drawing and physical model of a basic display stand design



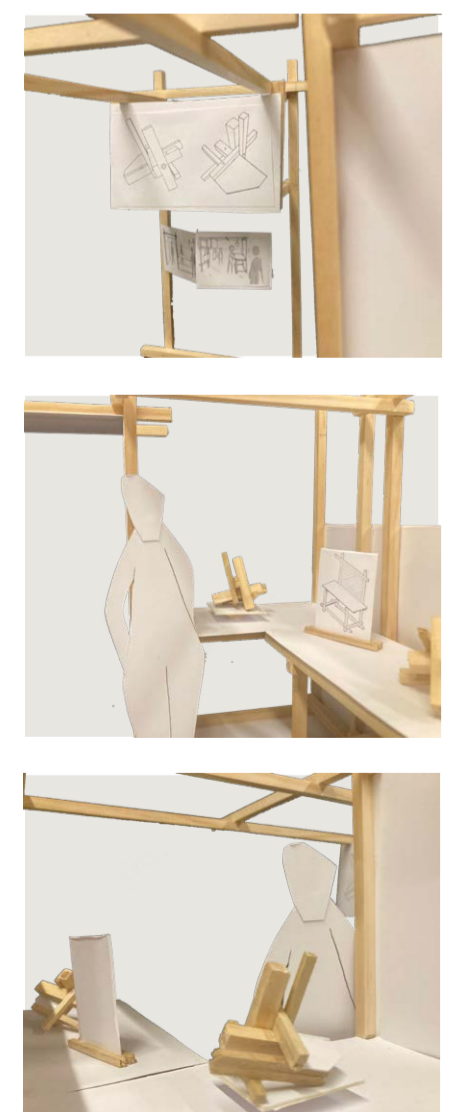
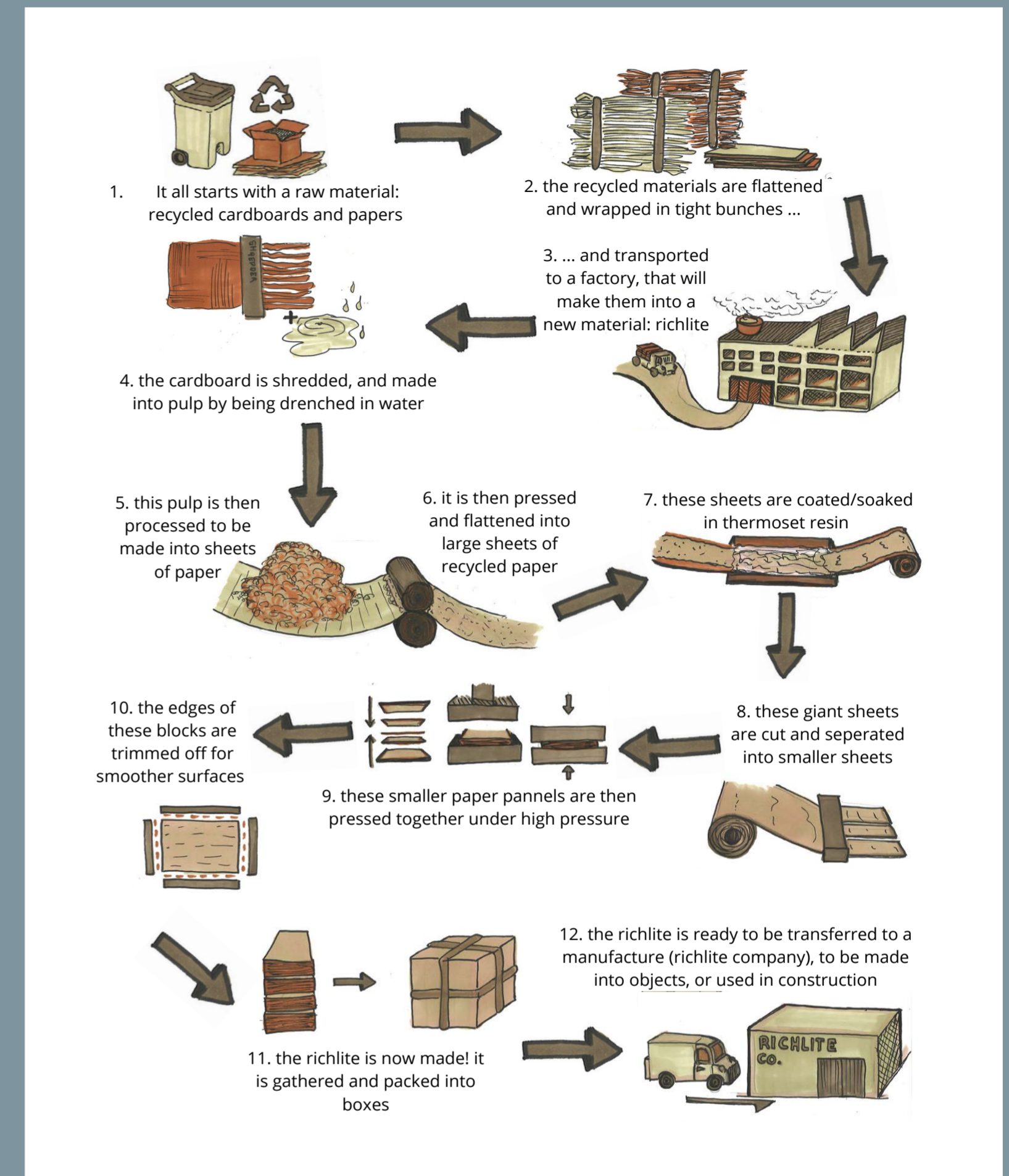
Exploration of different layout possibilities by revisiting the basic stand design, changing its context, scale, and size to challenge the original



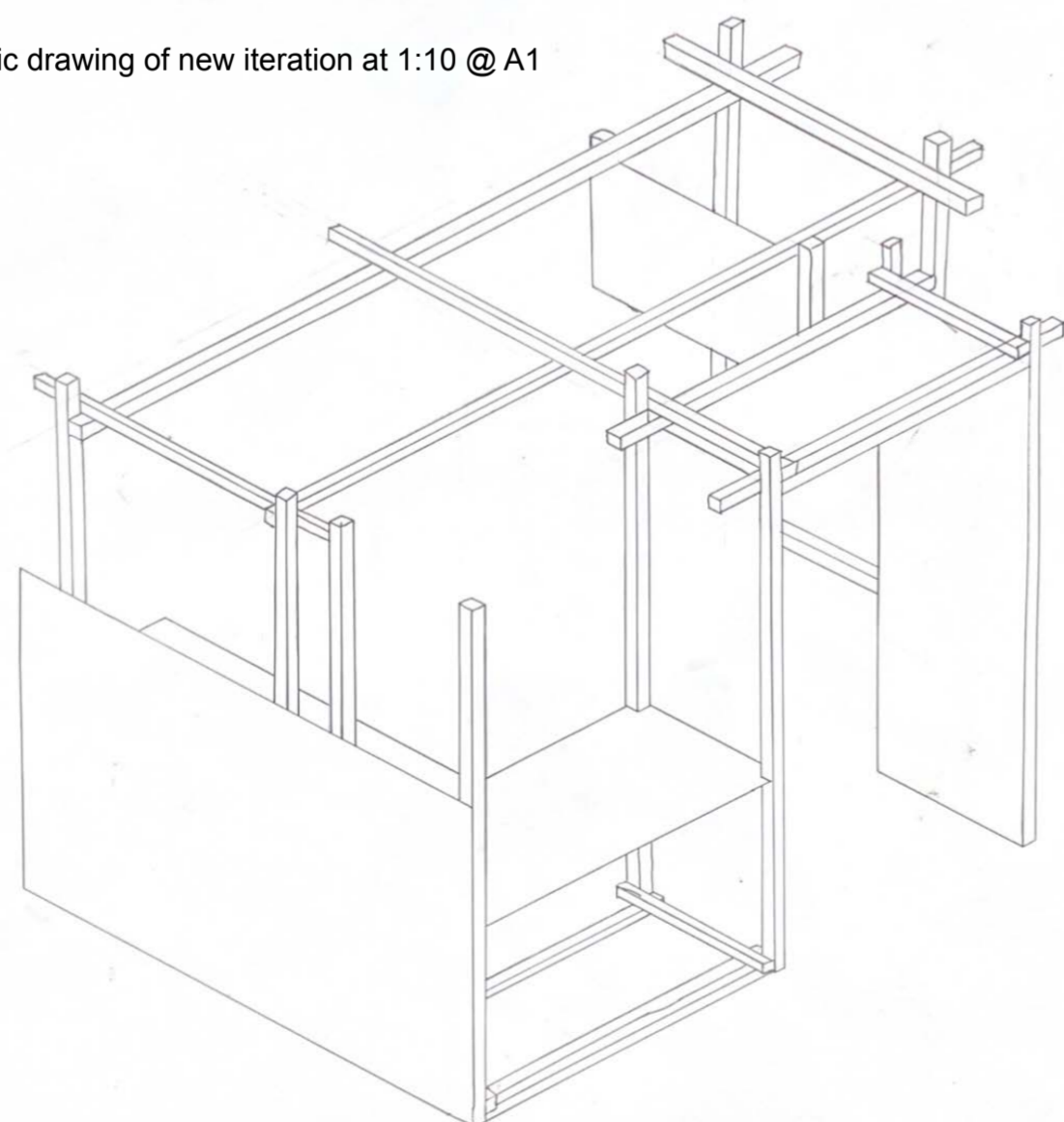
Iterations and sketches based on the new layouts that have been explored, creating different visions and ideas for an exhibit



Richlite production process diagram



Isometric drawing of new iteration at 1:10 @ A1



back view of the model

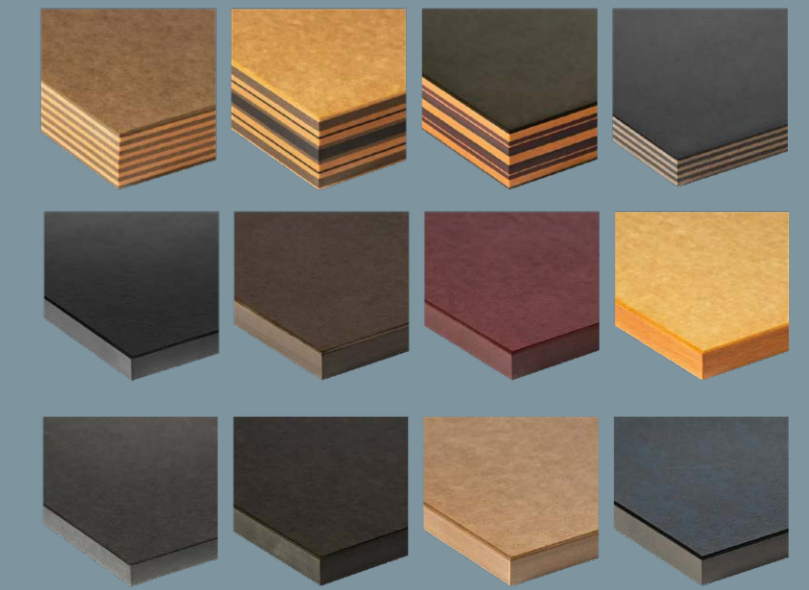


front view of the model

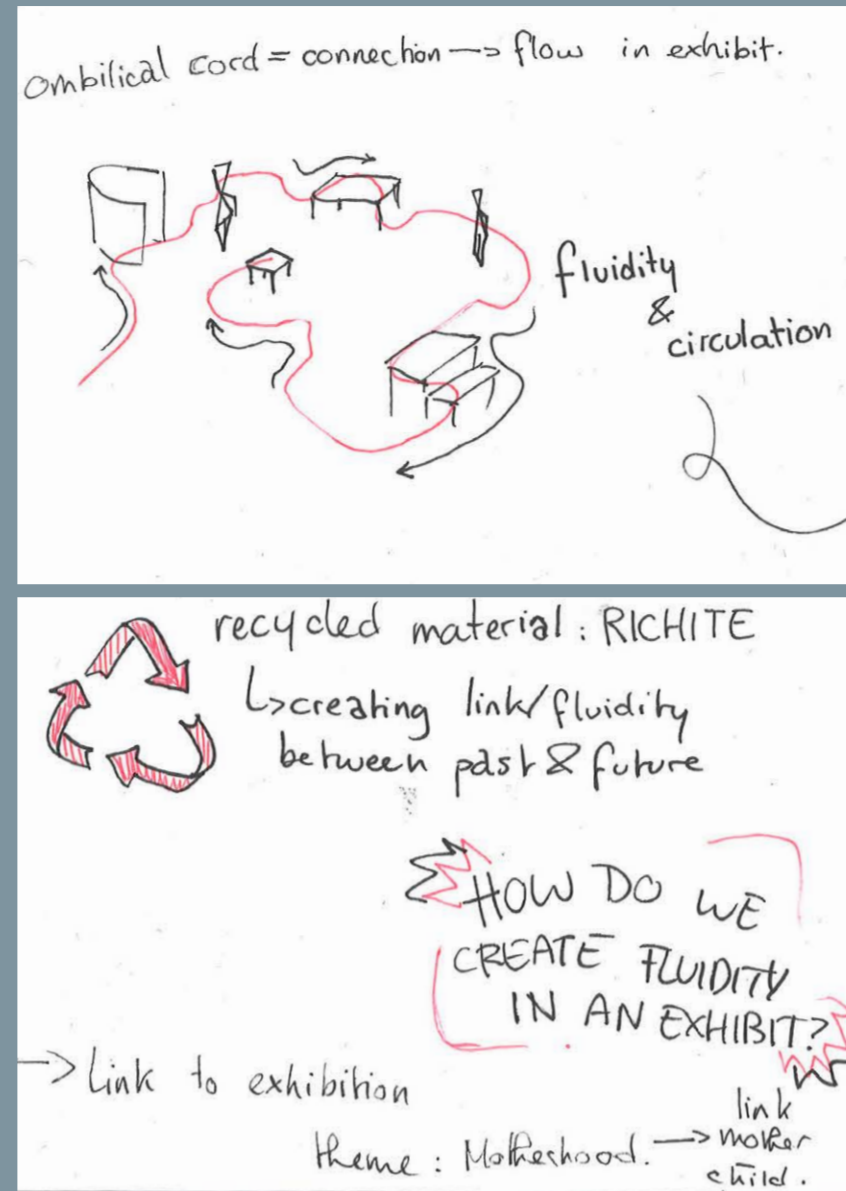
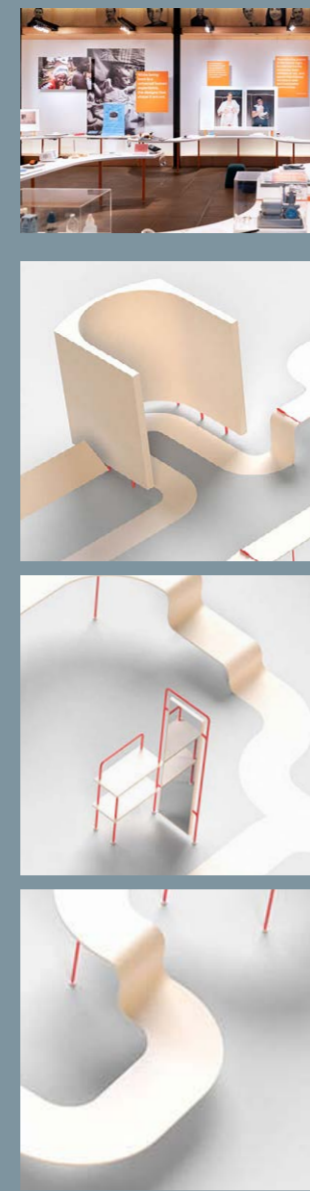
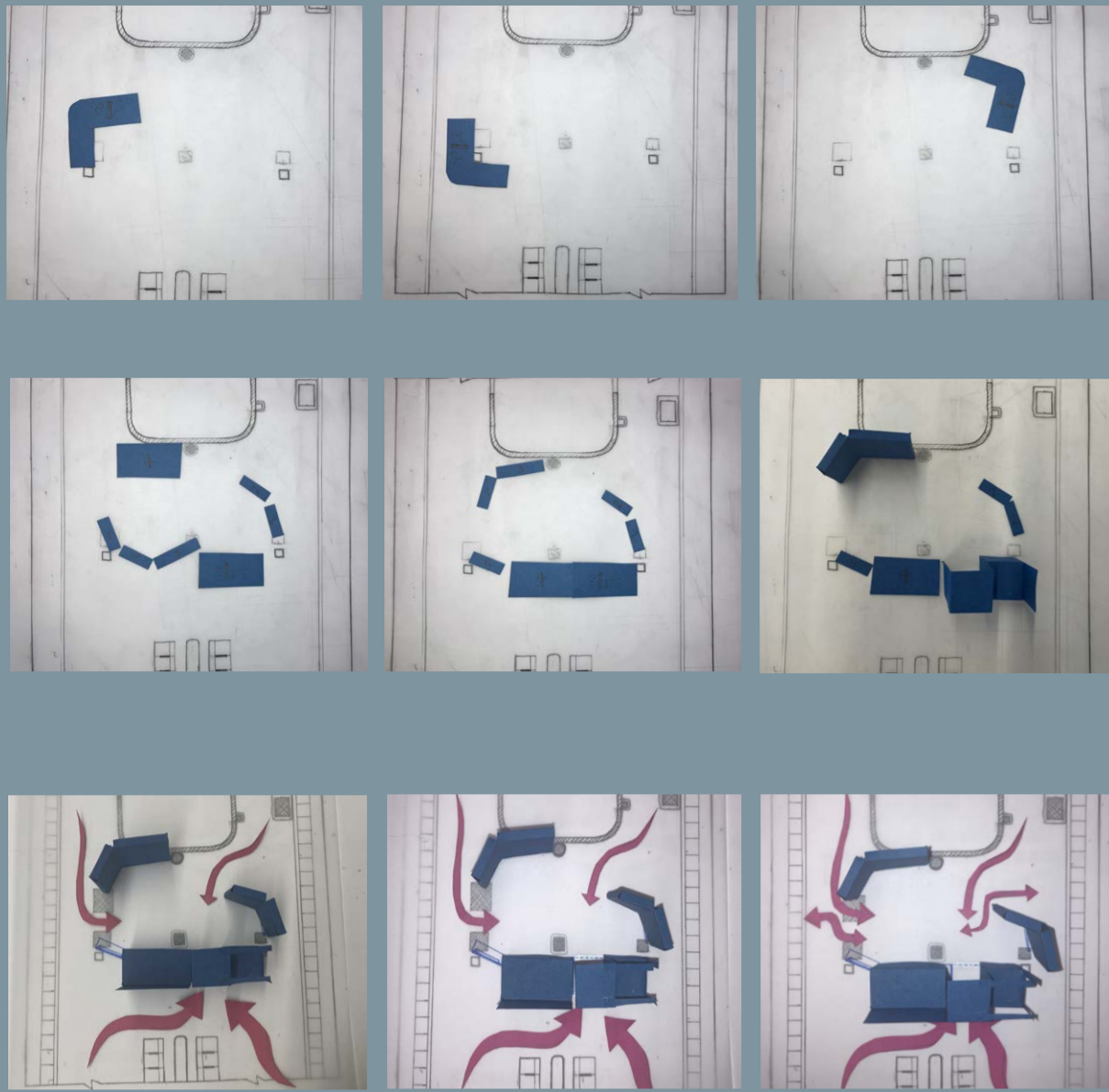
3. Initial Design Moves



Interior using richlite as a material for a kitchen

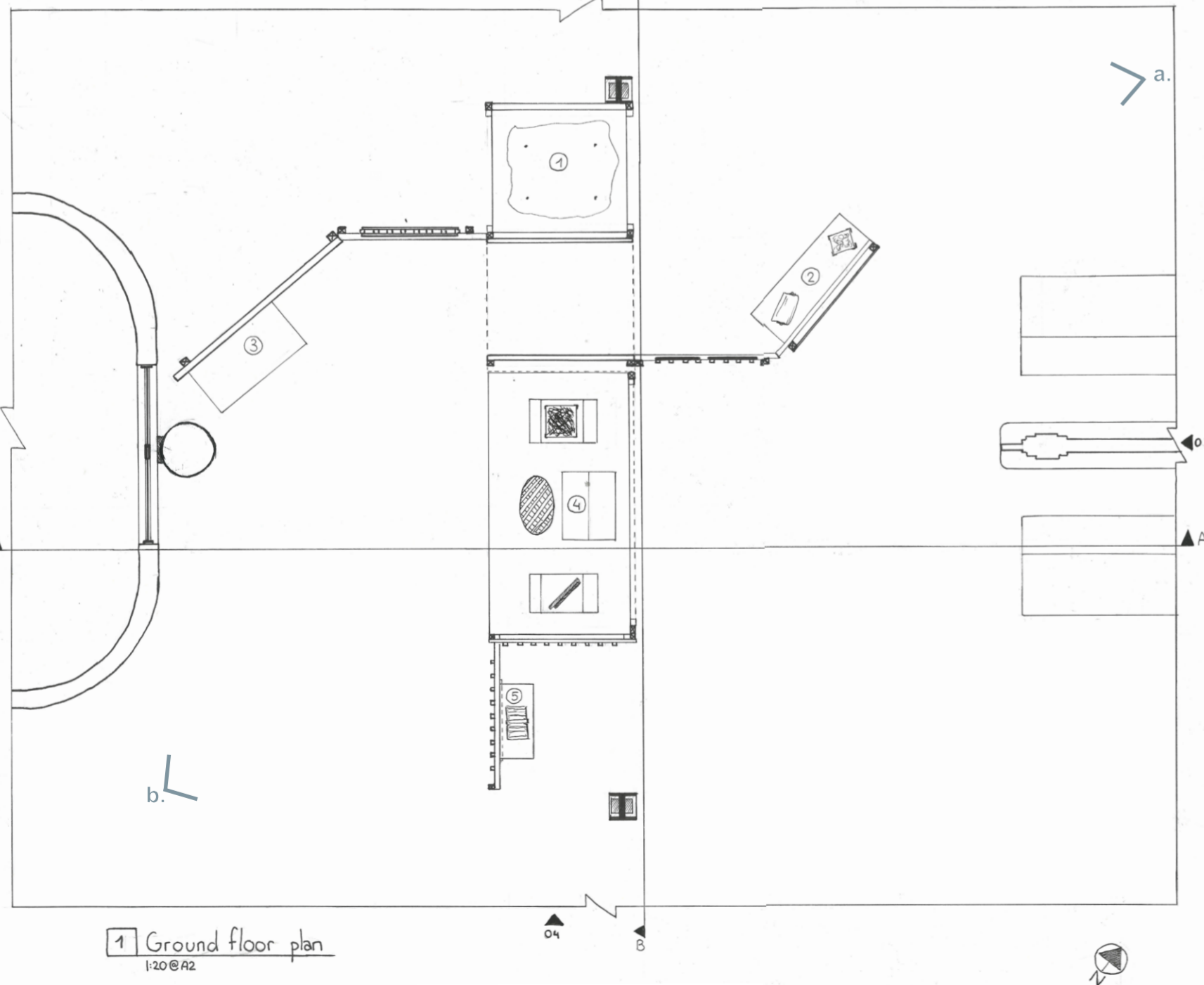


Different richlite finishes



4. Final Step of the Process

Hand-drawn plan of design, 1:20 @ A2



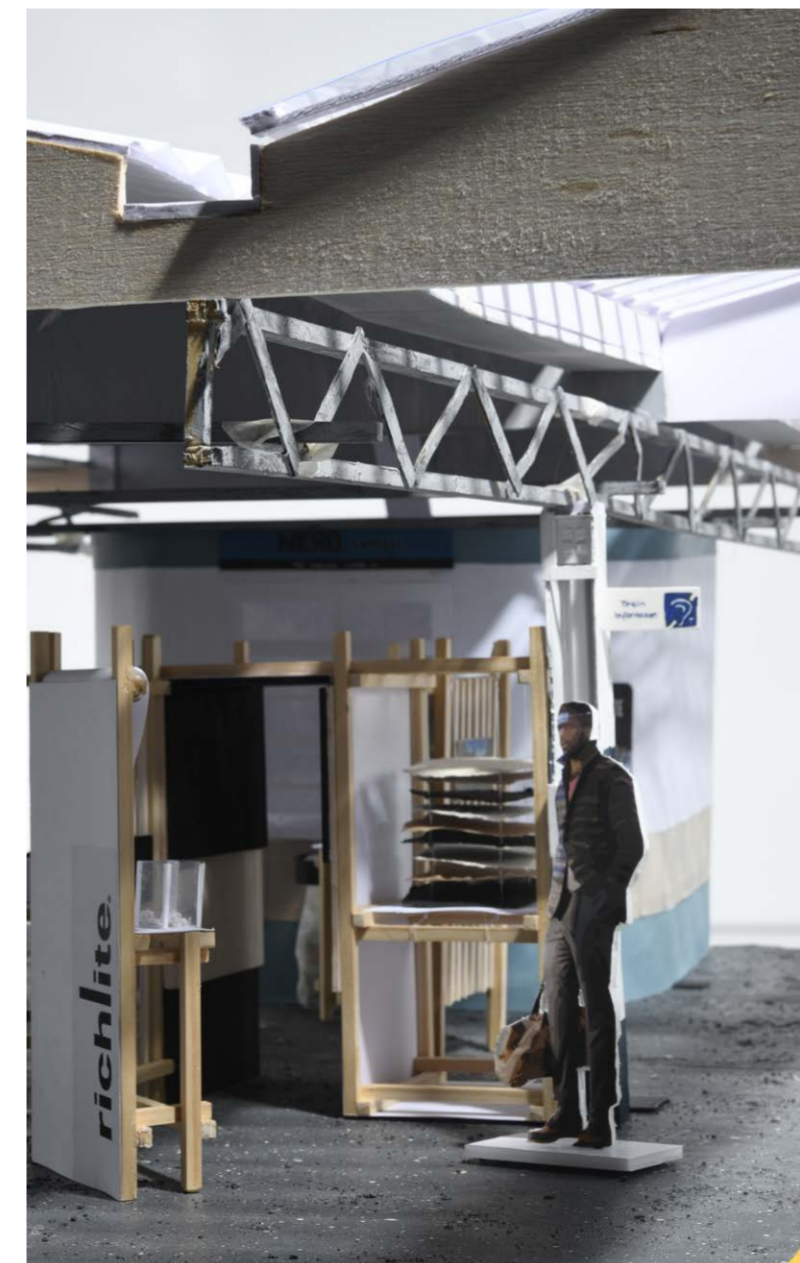
- KEY:
- ① Raw Materials
 - ② Production Process & Samples
 - ③ Interiors using material
 - ④ Furniture made from material
 - ⑤ Screen displaying production



2 Site Plan
 1:1250 @ A2



| | |
|------------------------------------|-----------------------------|
| KSA BAID L4 - Object Space Display | |
| Author | Gabrielle Duhoux |
| Drawing Name | Plan of Material Exhibition |
| Date Produced | 04.01.2026 |
| Revision Number | 01 |
| Scale | 1:20 @ A2 |



a. right view of exhibition within the site context at eye-level

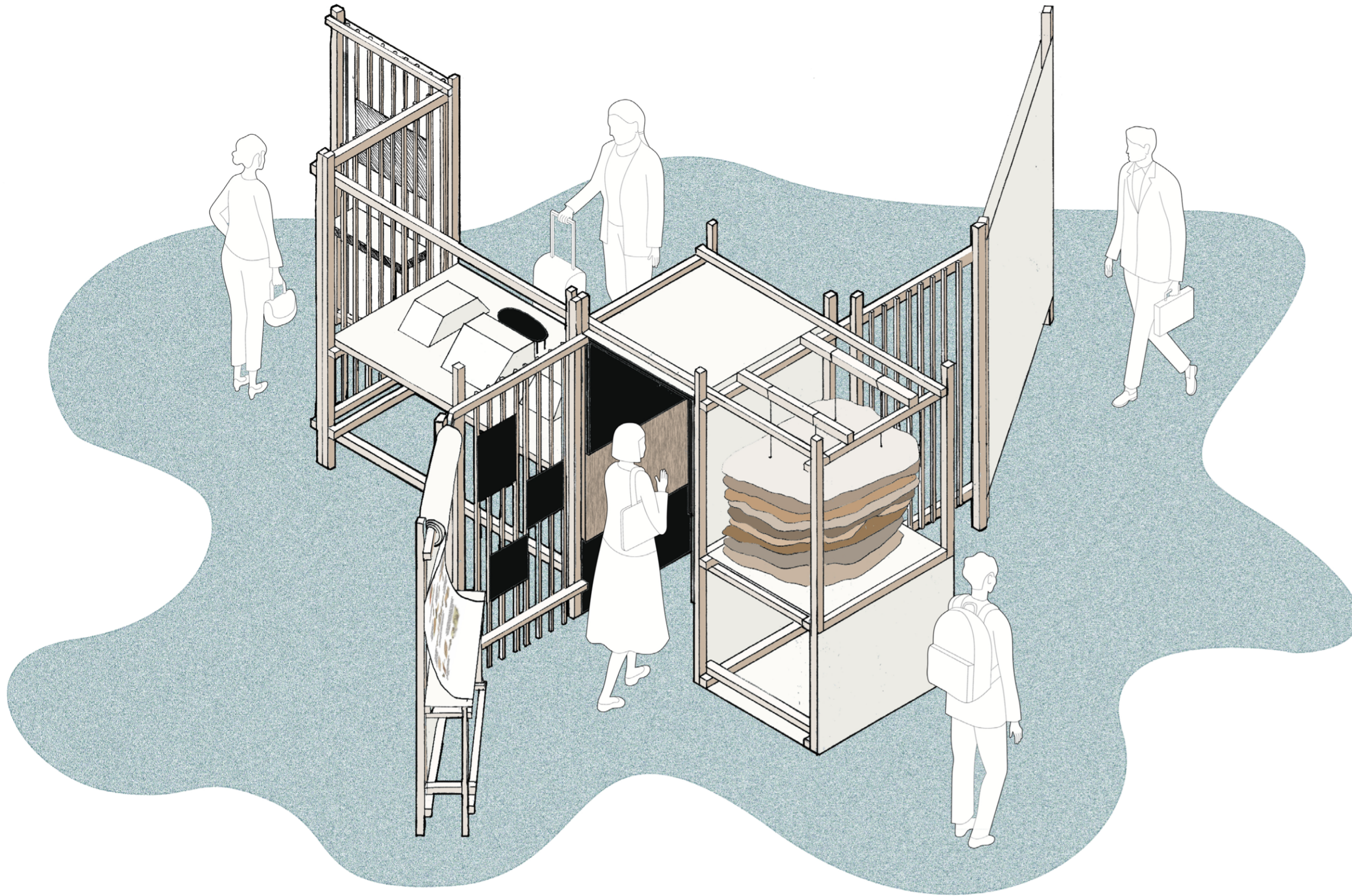


b. left view of exhibition within the site context from a higher point of view

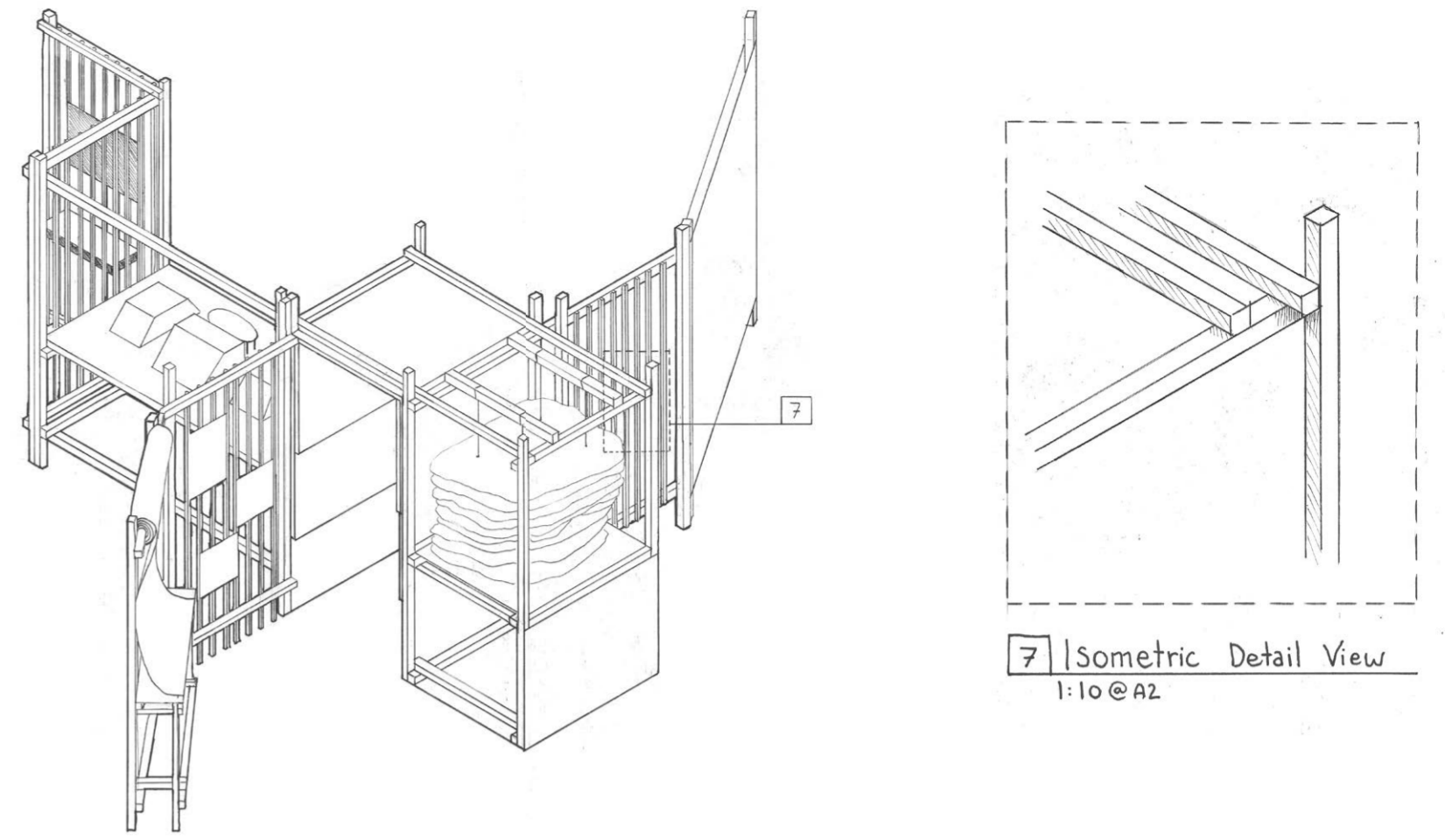


model production process

5. Experience and Resolution

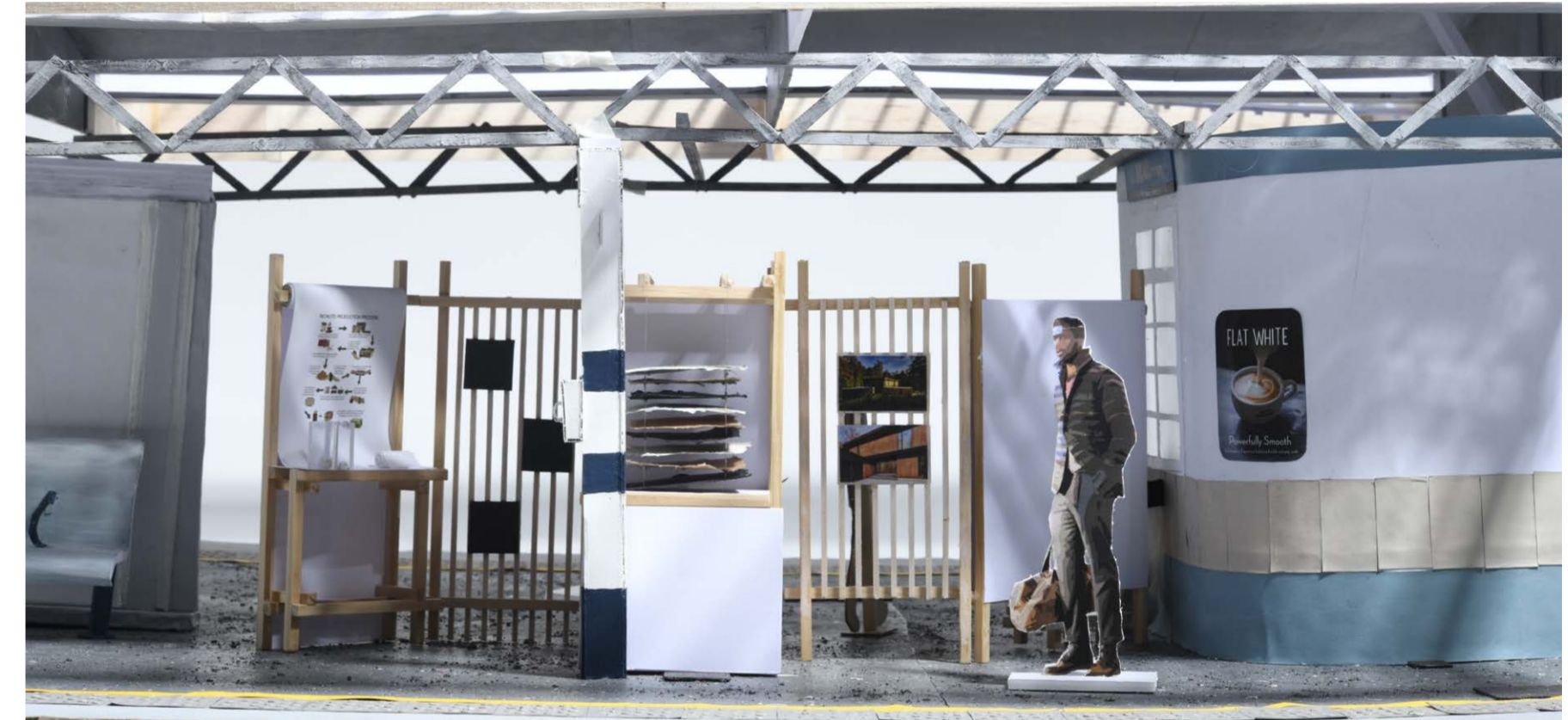


Isometric view collage

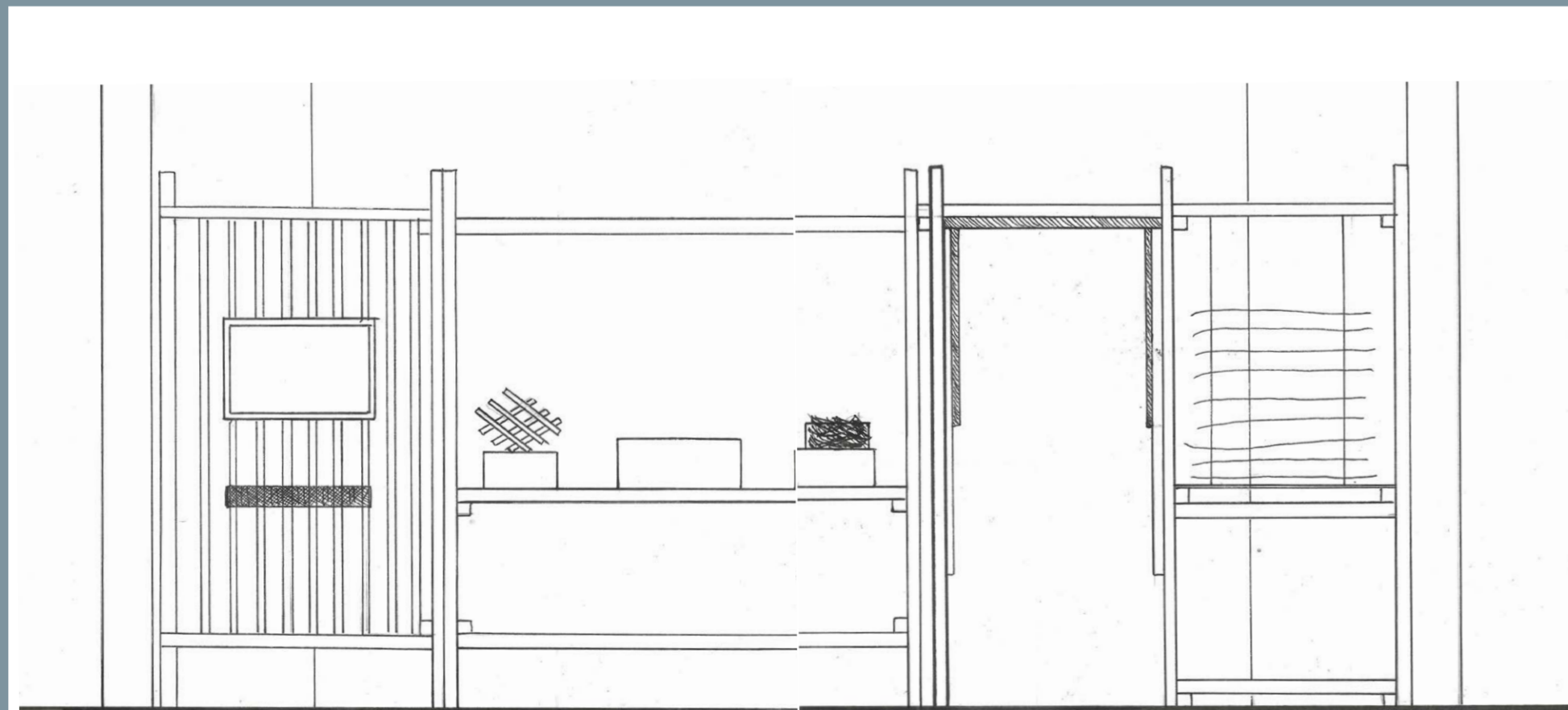


7 | Isometric Detail View
1:10 @ A2

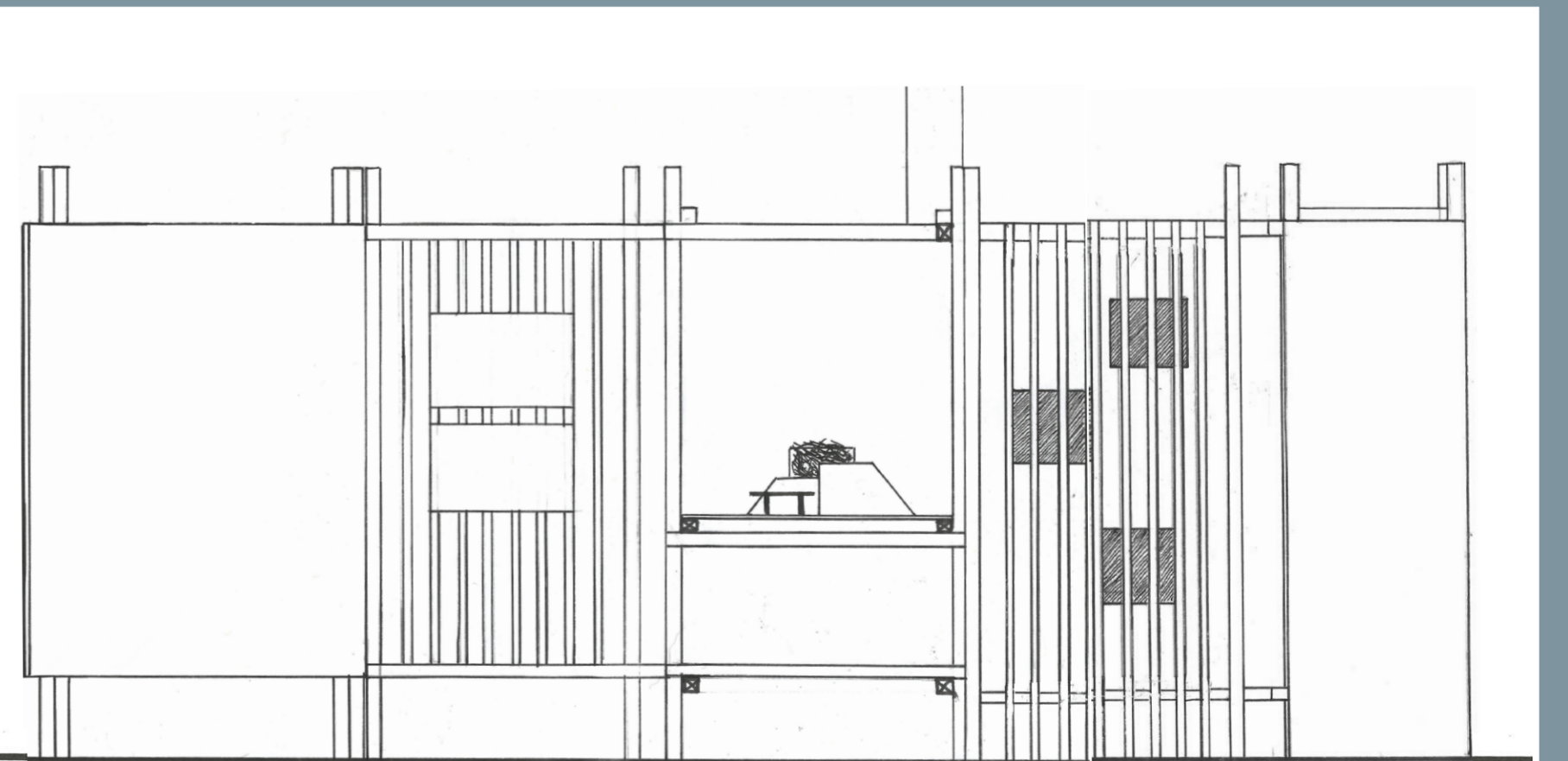
Isometric view, hand-drawn technical drawing, 1:20 @ A2



1:10 model of exhibition design inside the existing site



Section AA, 1:20 @ A2



Section BB, 1:20 @ A2