

Personal Details...



Name_Thomas Edward Bonner.

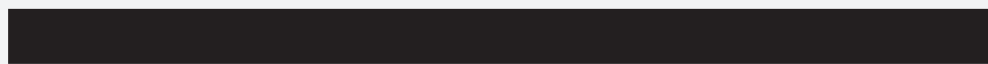
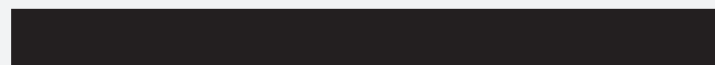
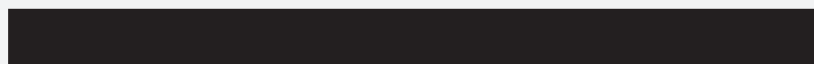
DOB_17/09/78.

Age_43.

Interests_Ideas on how to solve/
live with climate change &
sustainable,afordable design.

Profession_Designer.

Organisation_Started Terrafix.



PLEASE WATCH

LINK TO VIDEO!

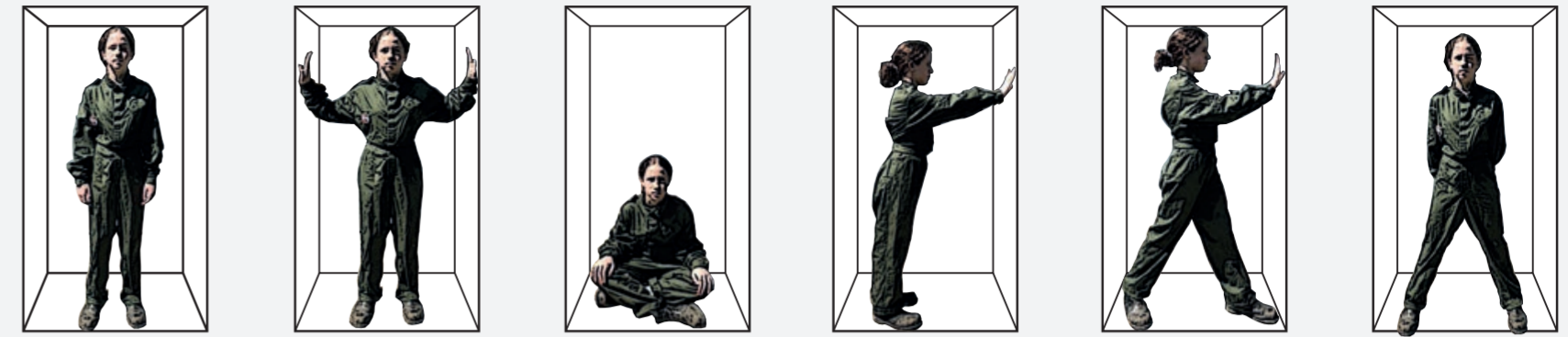
Nomadic Module Program_03

- Moving/Socialising
Arrive/Leave
- Eating/Socialising
Working/Making
- Working/Making
- Trading
- Cooking
Working/Making
- Sleeping/resting
Socialising/Relaxing
- Power/Heat/Water
Washing/Hygiene
- Storing

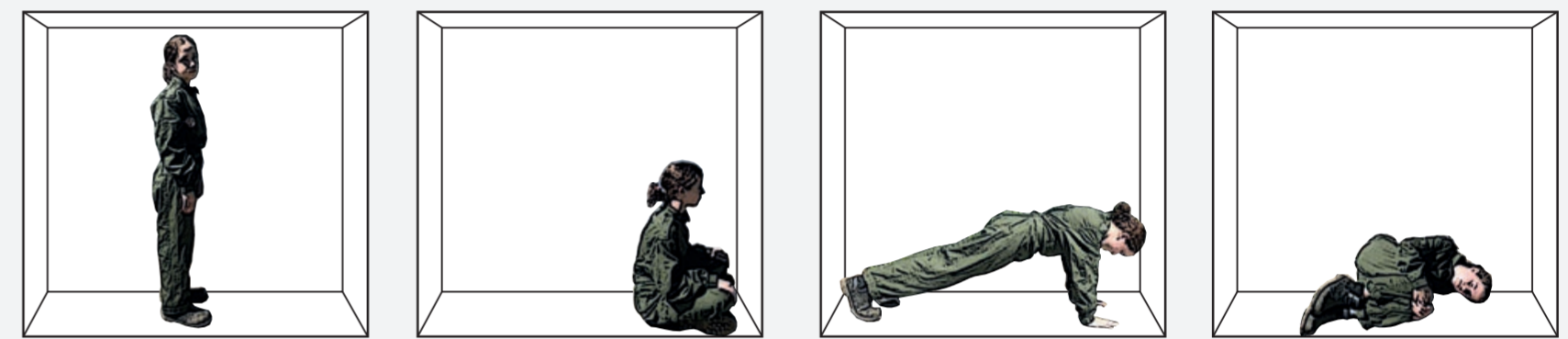


Nest of Nomadic Modules

Minimum amount of space_experiment



The minimum amount of habitable space.



2 meter square of floor space.

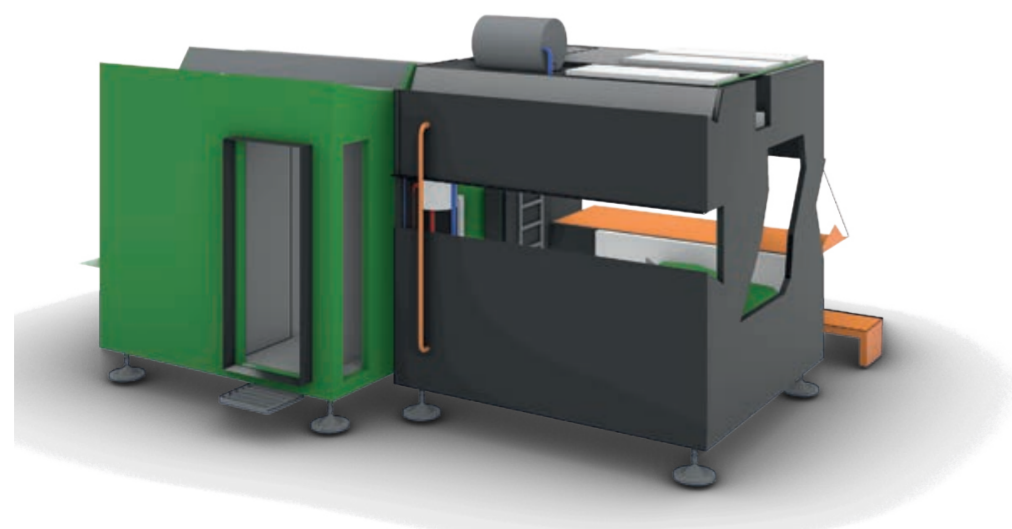
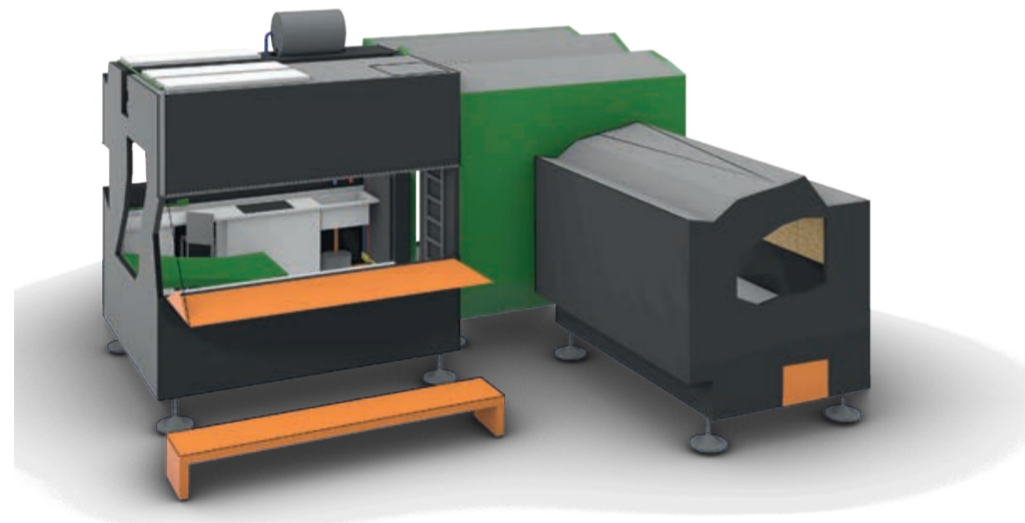
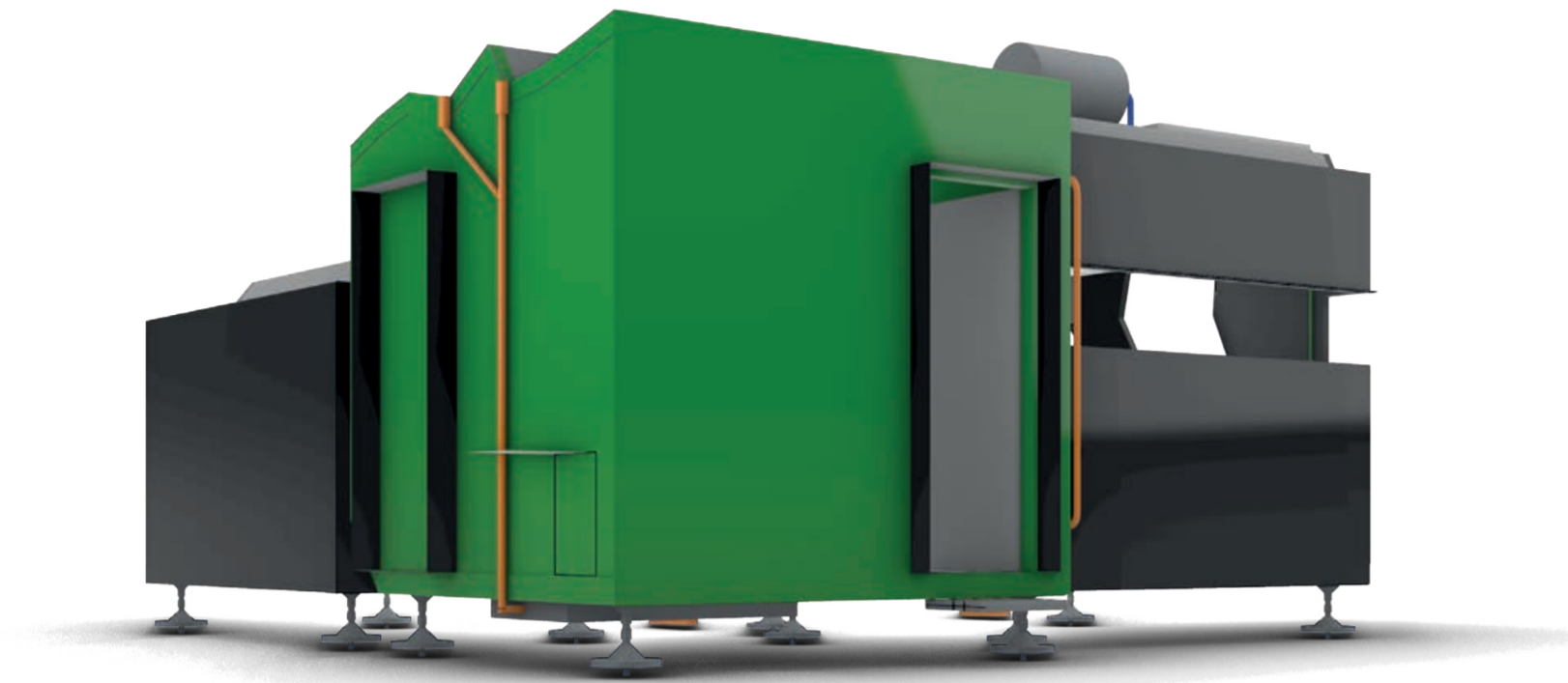


3.5 cubic meters of air space

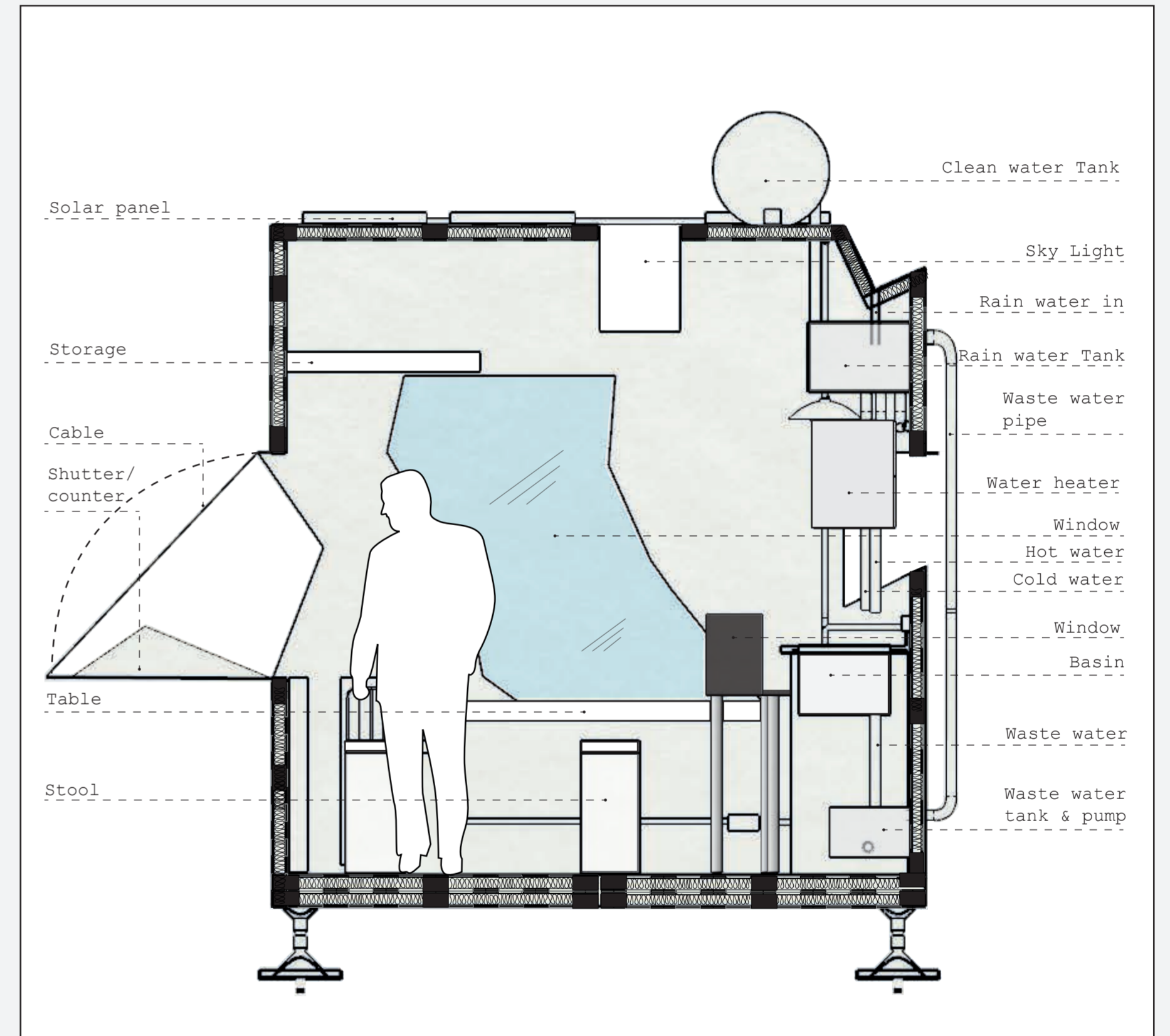


"In this volume, the contents of your life are caged. But every human action cannot be programmed or predicted. Our bodies always find ways to carve out space, to refocus our attention from the geometry to the lived experience, from the container to the contained."
T.Chak, Montreal/Amsterdam, 2014

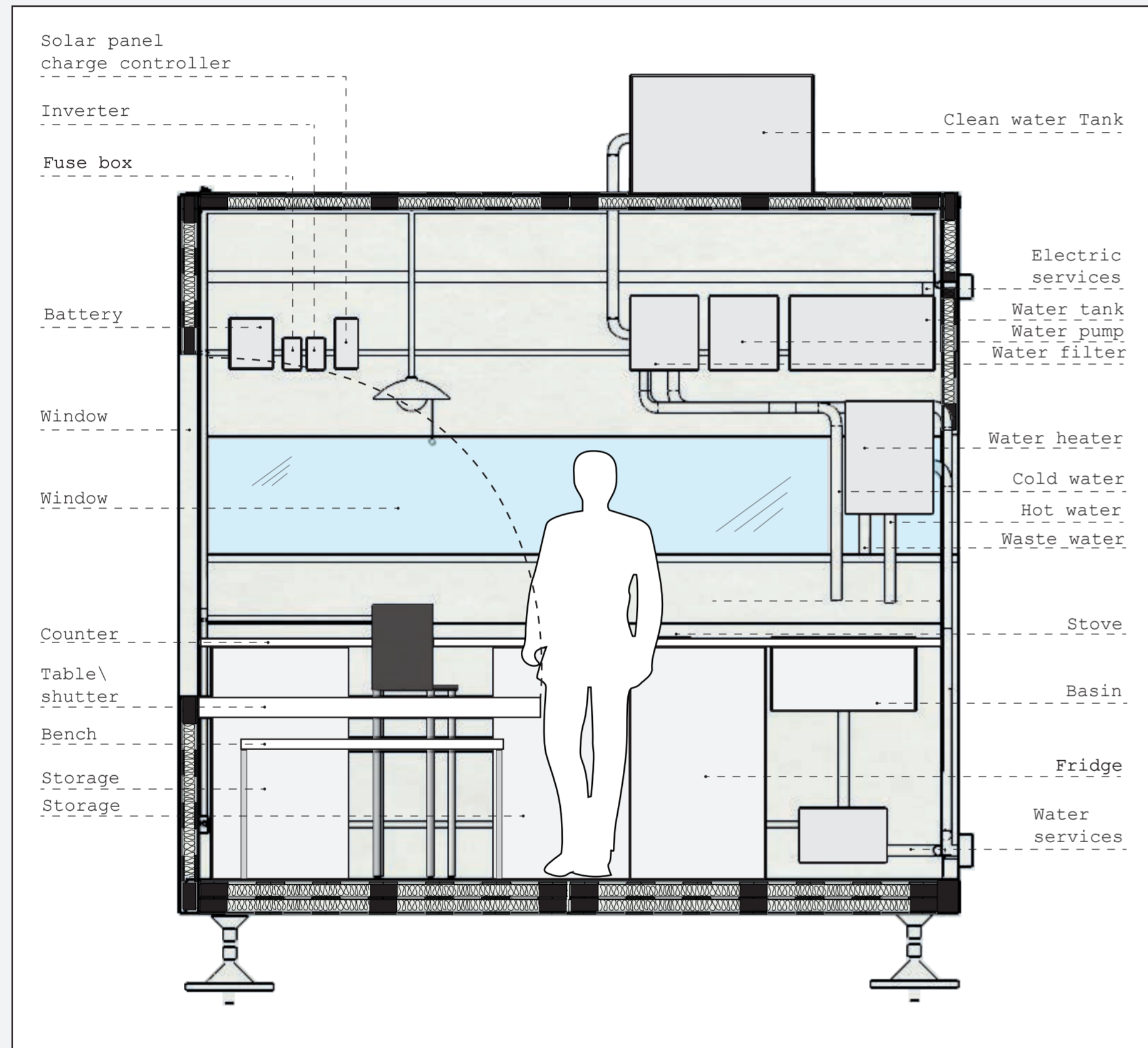
Model_06_Nest of Modules



Day_Section/Diagram_01



Day_Section/Diagram_02



site key Moments_02

Ariving at Terrafix HQ



The smaller side of the pump house is where the reception/meeting point is. This is the space where visitor to the site get to meet a member of Terrafix and start negotiation on the terms of them requiring a pod or nest of pods. They may be looking to rent space on the site if they already have a pod, or to have a repair carried out on their pod.

Spatial Relations_01_Terrafix Member

Morning!
Im Angela.
Im going to take
you on a tour &
show you what its
like as a member
of Terrafix.

Snug module_wake

I always start the day
with coffee! Everyone
lives in their
own modules on site,
members & users.

Day module_eat

My day always starts with a
site inspection.Reception is
the first place new users/
residents meet & interact
with us so its the first
stop on my inspection.

Pumphouse_reception

Our next stop is down in the
workshop. It's important that
our stock of materials is
maintained in order to keep
up production levels.

Subterranean
workshop

The production of module units is our main
source of generating income/currency. This
not only enables us to live, it also allows
us to keep developing & designing new items
ideas & ways of living in this new world.



Spatial Relations_02_Terrafix Member

Then I visit the studio, where
I get a few hours of my own
design work done before I finish
my day with the final part of my
inspection.

Pumphouse_studio

The studio is a
calm & creative
space full of
light. It's also
perfect for
keeping an eye on
whats happening in
the compound
area.

When I get back
to my module
before I eat I
carry out similar
checks to my water
& power systems,
oh & I empty the
compost toilet.

Day module_check
utilities_eat

At the end of every day the pumps
are checked, I also check the daily
maintenance record to make sure the
daily service/checks have been
carried out.

Pumphouse_ground floor pump

More checks down here in the subterranean
level. The solar power units,
water systems & lift all require the
same checks as the pump upstairs.

Subterranean_pump area

Im off to bed now.
Night!

Snug module_Sleep