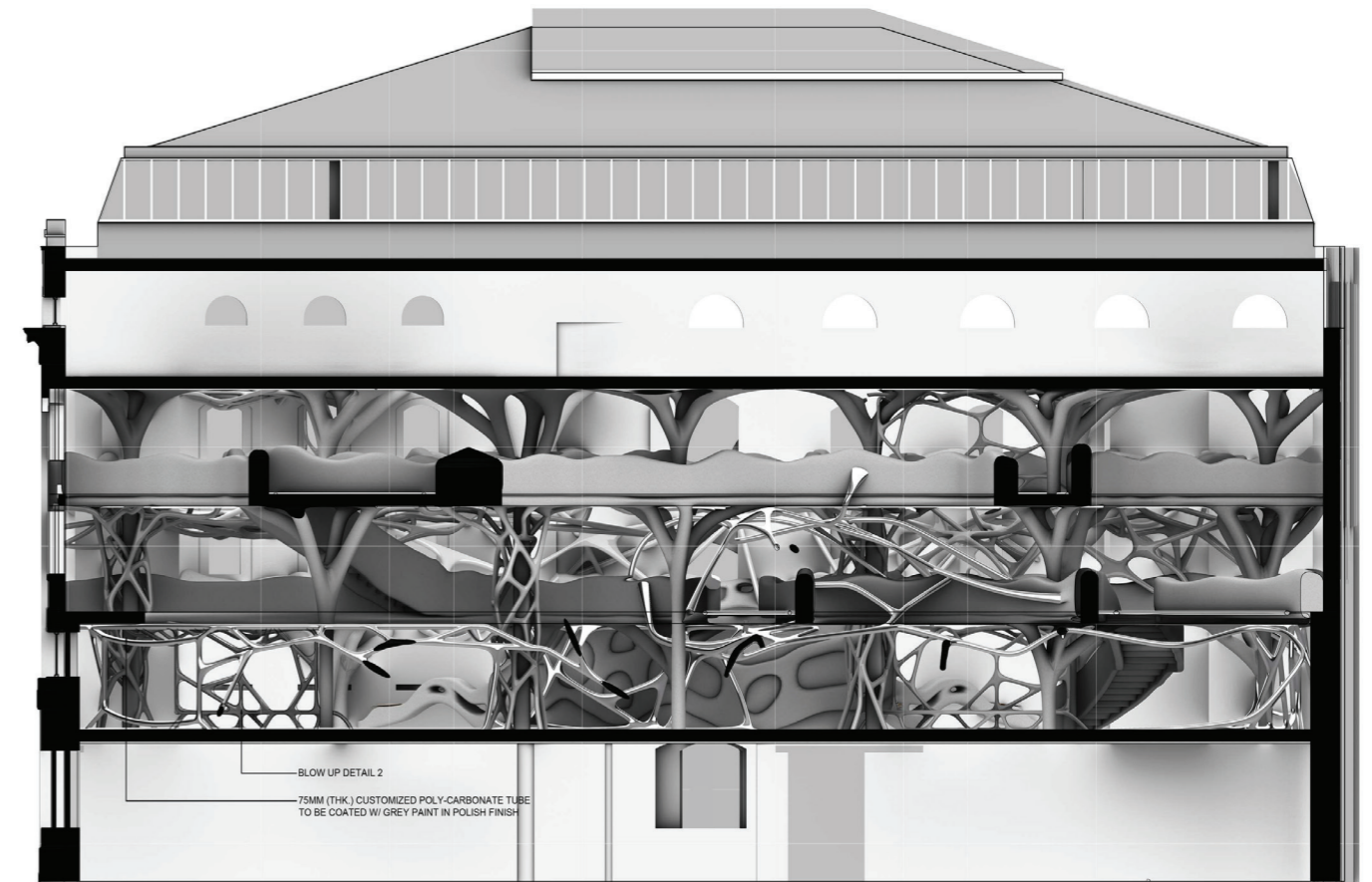


The Emotive Continuum

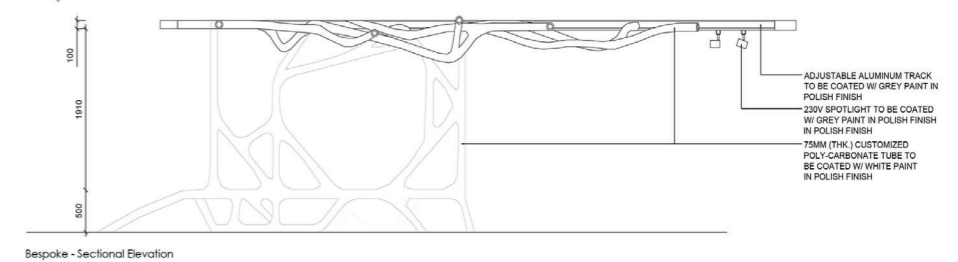
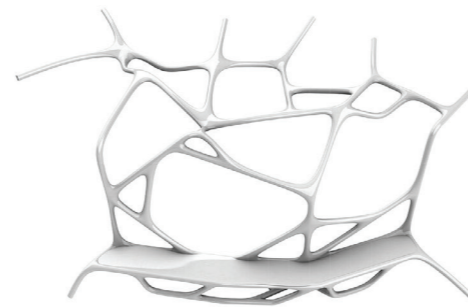
Project by: Heanna Yap, UWE Bristol

This project challenges the sterility of the art gallery; exploring the intimacy of one's emotion towards the city and projecting potential visual interconnections back to the urban context. The proposal's organic forms, inspired from nature, seeks to converge within and prompt the visitor's reverie. Hence, the intended interior sequence proposes to shape the experience of the user and analyse their emotional transition within the space. Firstly, through investigation of the Bristol map, I curated a web that links all the surrounding amenities back to the Arnolfini which was then presented through its interconnection with the city reprojected within the Arnolfini. Thus, the deconstruction of each fragment of the city projects a sense of intimacy which was then translated into a three-dimensional web as a method of form finding. The first element I wish to highlight through the narrative of this project is how our bodily senses adapt and respond to the change of atmosphere; this allows each individual to create a sense of memory through different perspectives in which I believe in return creates

a deeper meaning towards the architecture. This has led to further analysis towards the non-ocularcentric qualities of a space which thrives to focus more on the sense of hearing in relation to what we can feel in a space. Therefore, the development of organic forms which imitates the nature atmosphere surrounding the Arnolfini and transforming it into the language of fluidity and interconnectedness in attempt to achieve a seamless transition from walking by the harbour with an opportunity to be fully immense through the nature of the structures upon entering the gallery. The eyes can be deceiving in what we see at first glance but our emotions are genuine and allows for a space to have a sense of authenticity that is unique in our own way.



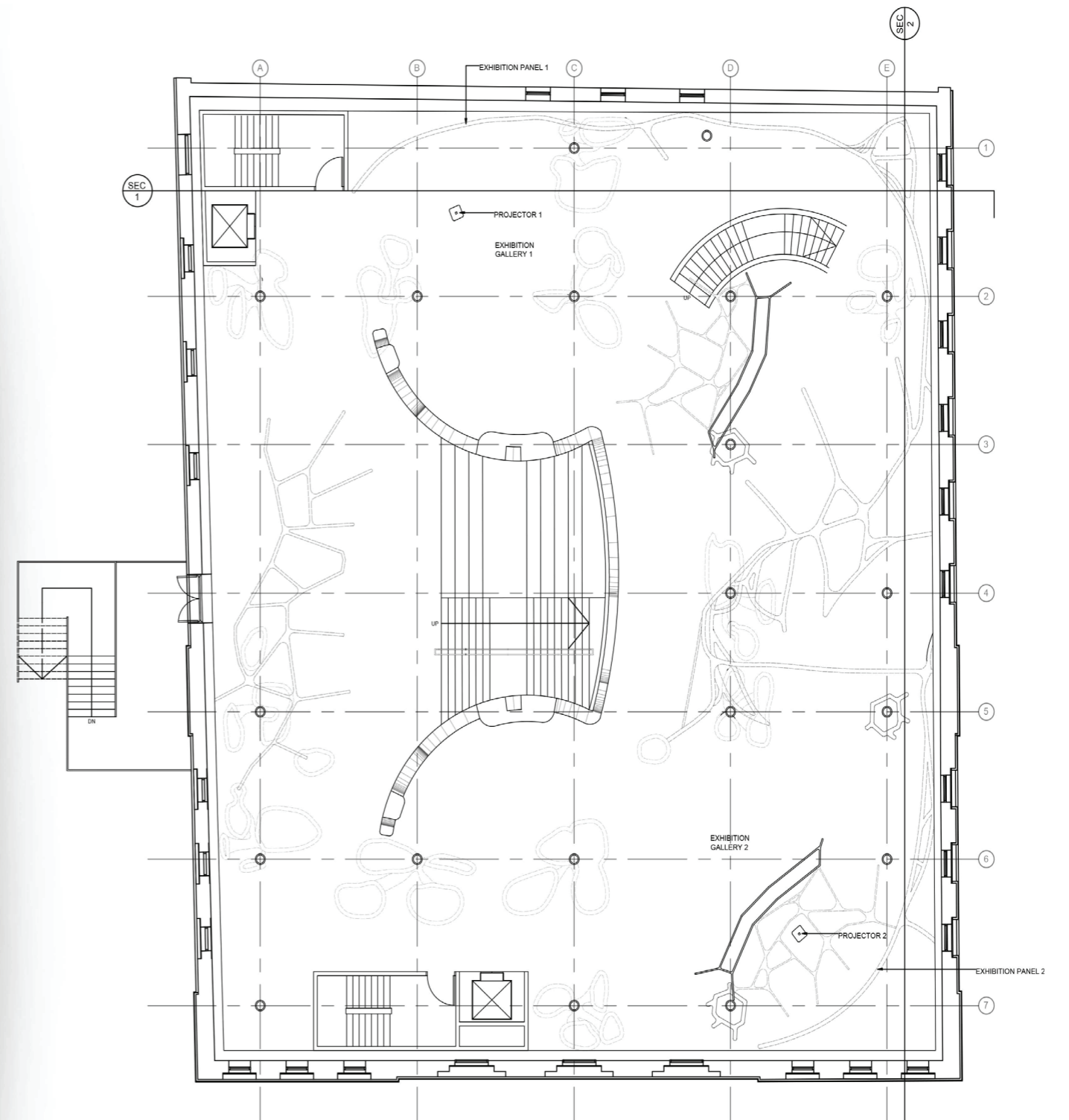
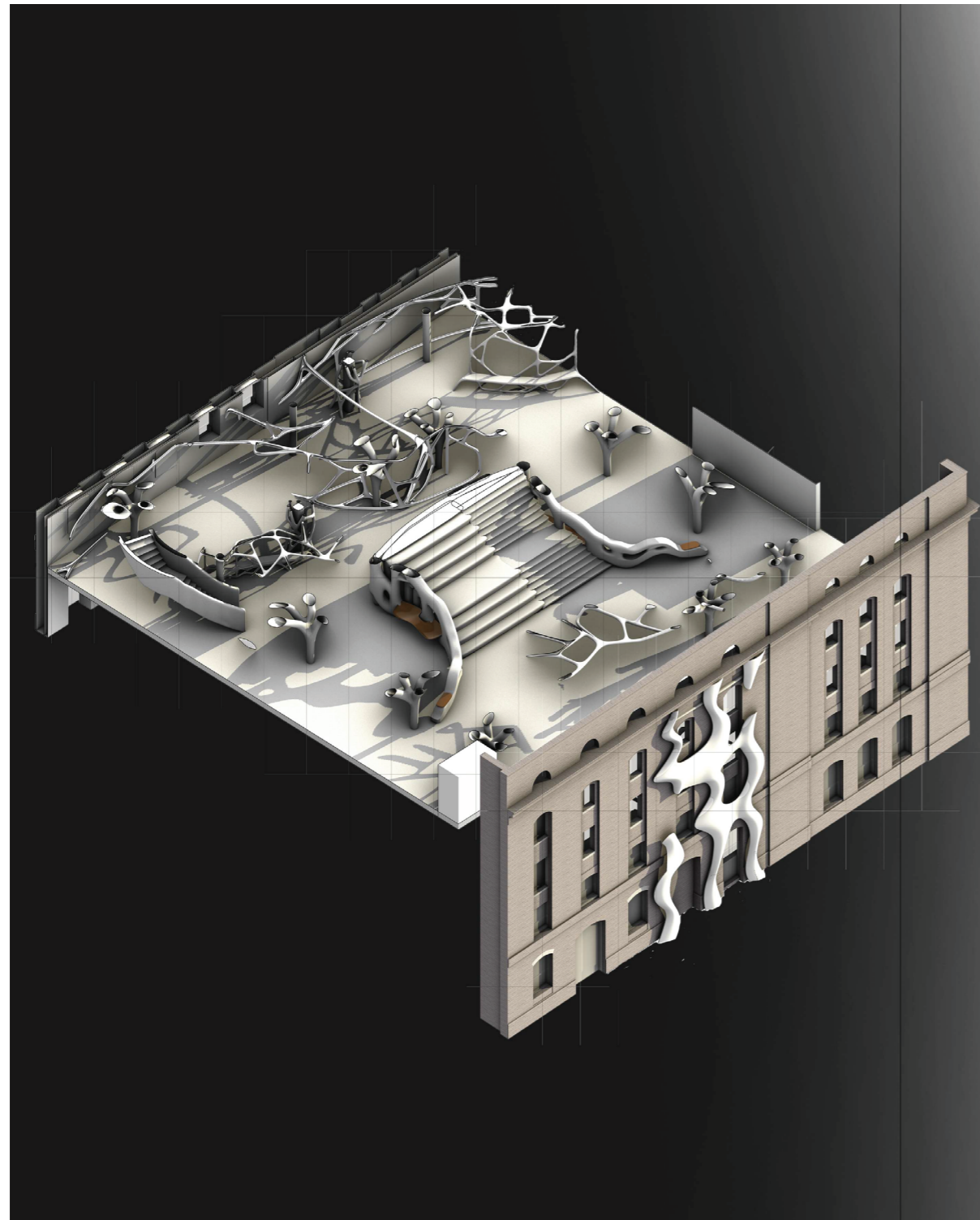
Right Section



Section through the gallery and emotive structure detail.

The Emotive Continuum

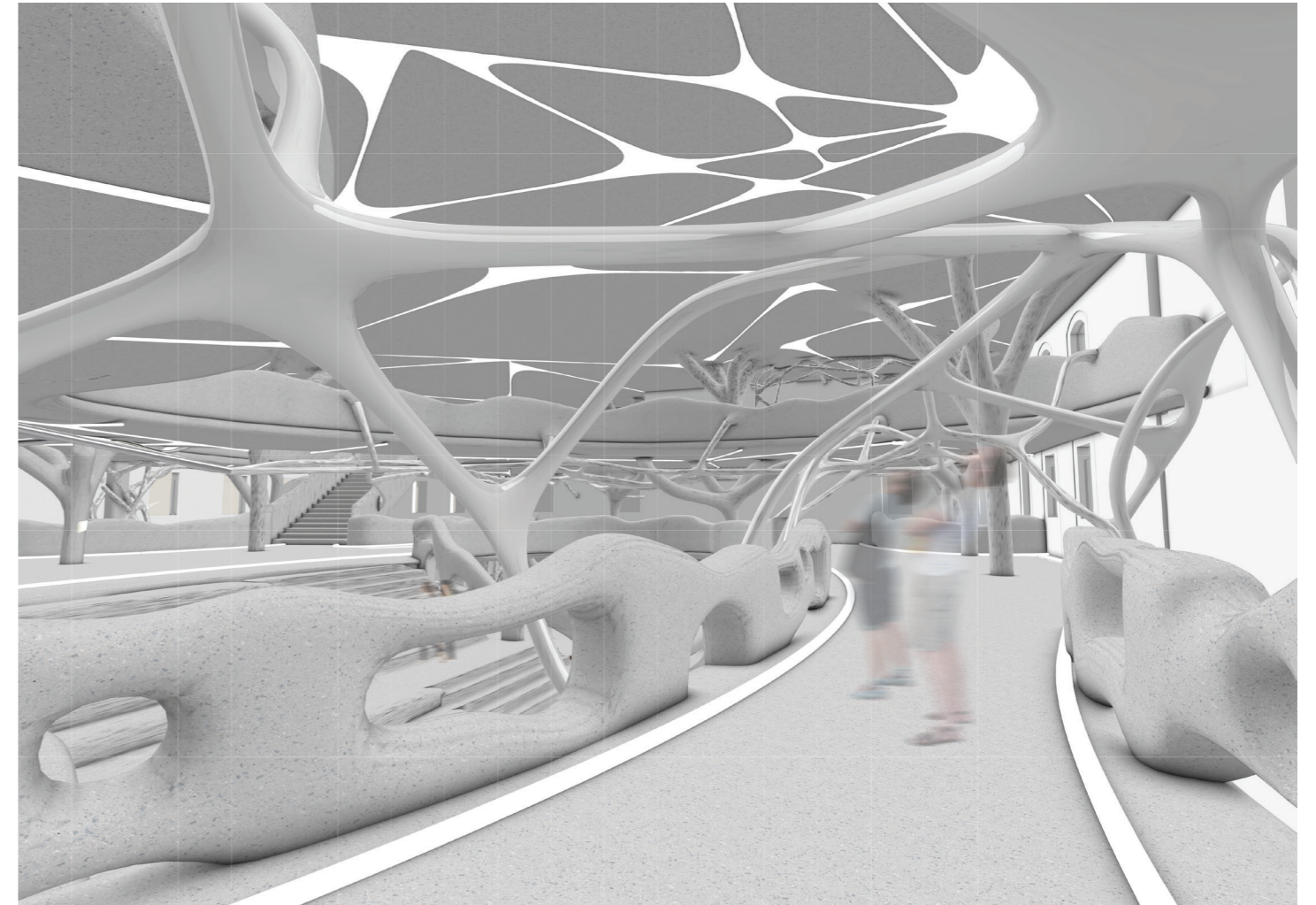
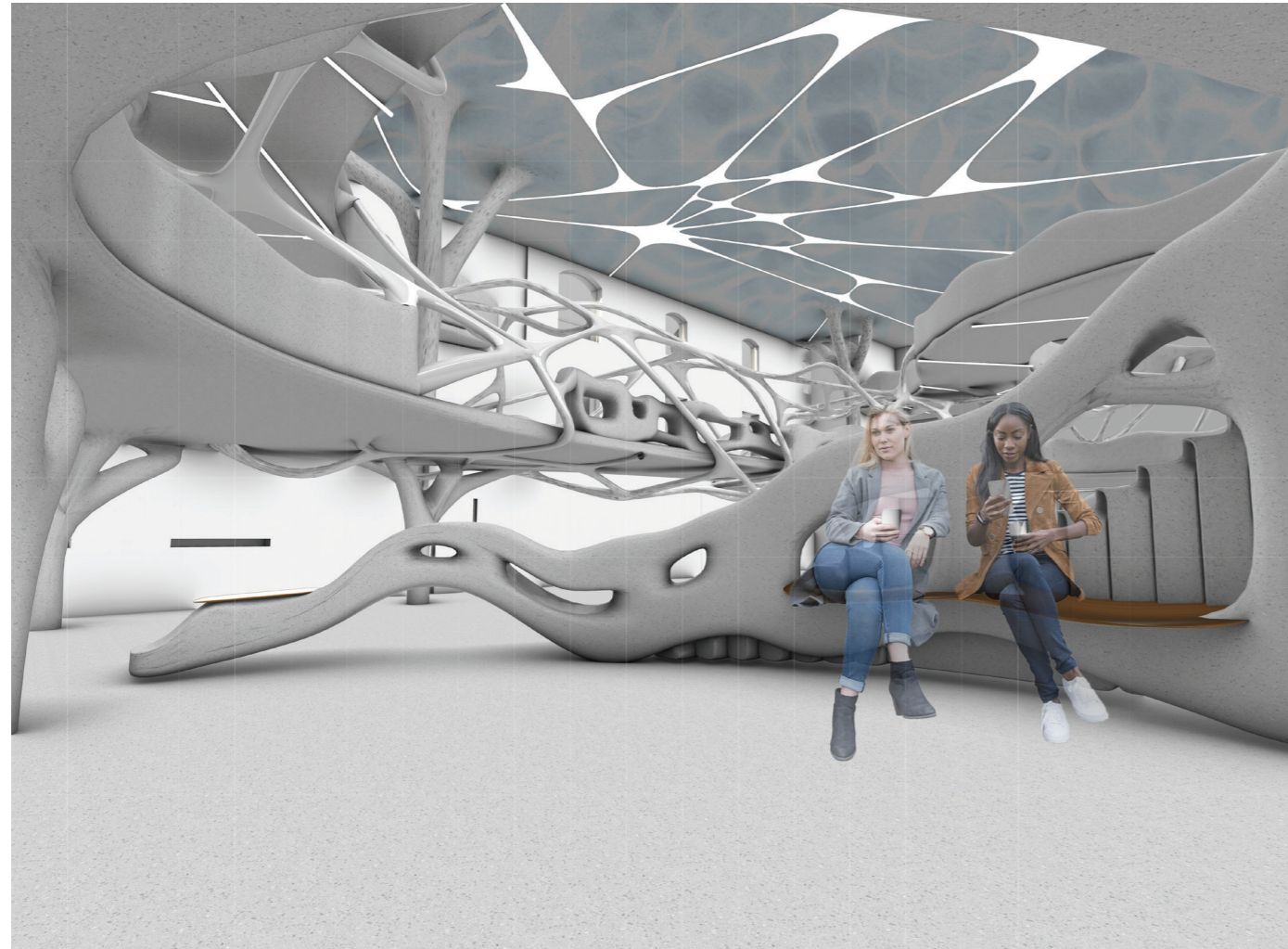
Project by: Heanna Yap, UWE Bristol



Axo and plan showing emotive structure emerging through the facade of the Arnolfini

The Emotive Continuum

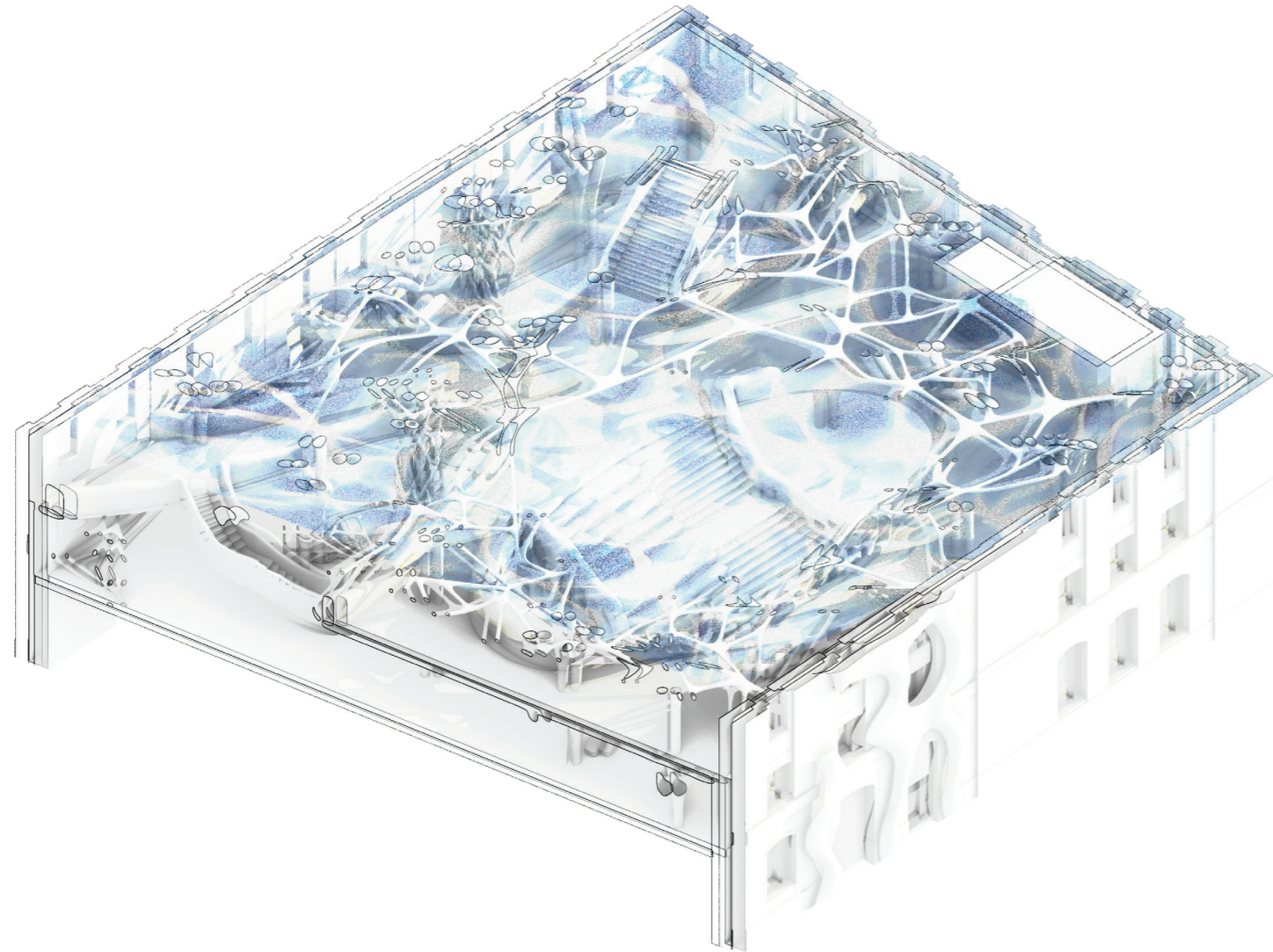
Project by: Heanna Yap, UWE Bristol



Views showing the interconnections of each level from the lighting design to the structure design of the immersive tunnel

The Emotive Continuum

Project by: Heanna Yap, UWE Bristol



Left: Collage of the plan with a sectional view of the 3D model, showing the fluidity of the form.
Below: Interior perspective showing the juxtaposition of the fluid forms of the emotive structure passage with the light fixtures above.

