





"AMELIA"

About Amelia:

She **is homeless** many years. When her parents passed away she lost her property due to **depression** she didn't pay the bills and **lost** the house where she lived.

In the interview she mentioned that:

She was previously offered housing, but she refused them because she wants her **own house** with **garden** in Canterbury. She needs **privacy**, and she is not willing to share a bedroom with others. **Religion** takes a important place in her life.



"DAVID"

About David:

He recently **became homeless** and he lives in his car. He is a **divorced** father. When him and his wife separated he had to leave the apartment they shared. He is currently **working**, but still can't afford to rent an apartment.

In the interview she mentioned that:

He loves **nature**, he finds it calming and **therapeutic**. His passion is hand **drawing**. He uses pencil and pen to create mostly drawings about "imaginary" nature scenes.



"JAMES"

About James:

He **is homeless** for many years. He is currently a drug and alcohol addict.

In the interview she mentioned that:

He mentioned that he would love to live in an **en-suite** apartment. It could offer him **privacy**.



"ROBERT"

About Robert:

He **became homeless** many years ago.

In the interview she mentioned that:

He described the perfect accomodation for himself. When building a house the consideration of **light and wind** is important. A **small and private** accomodation is more than enough. He talked about how **Feng-Shui** improves the quality of the interior. His **dog** it's always by his side.

Users; their dreams and stories

The characters are real, but their names have been changed



Time spent there /day

20-10 hours

9-3 hours

2-0 hours

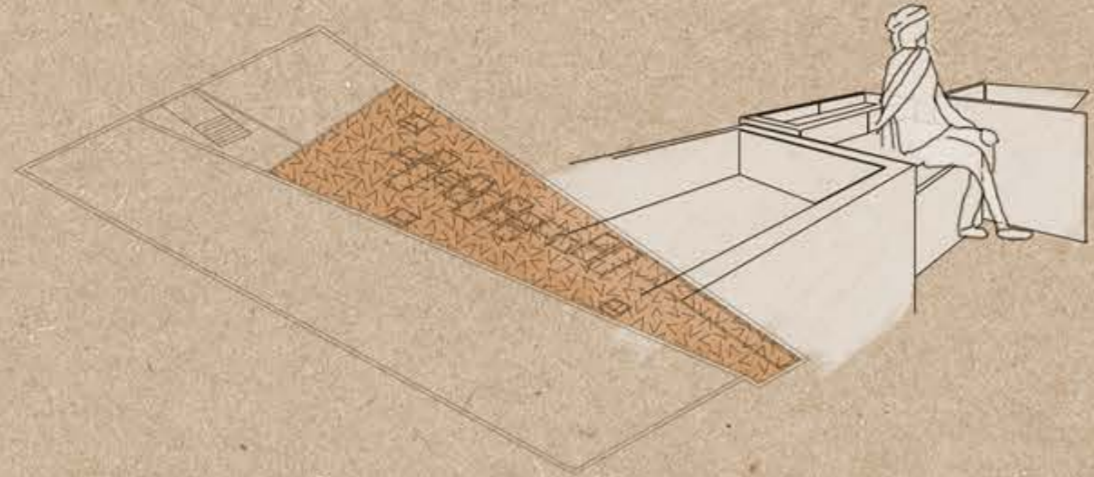
Days spent there /week

7-5

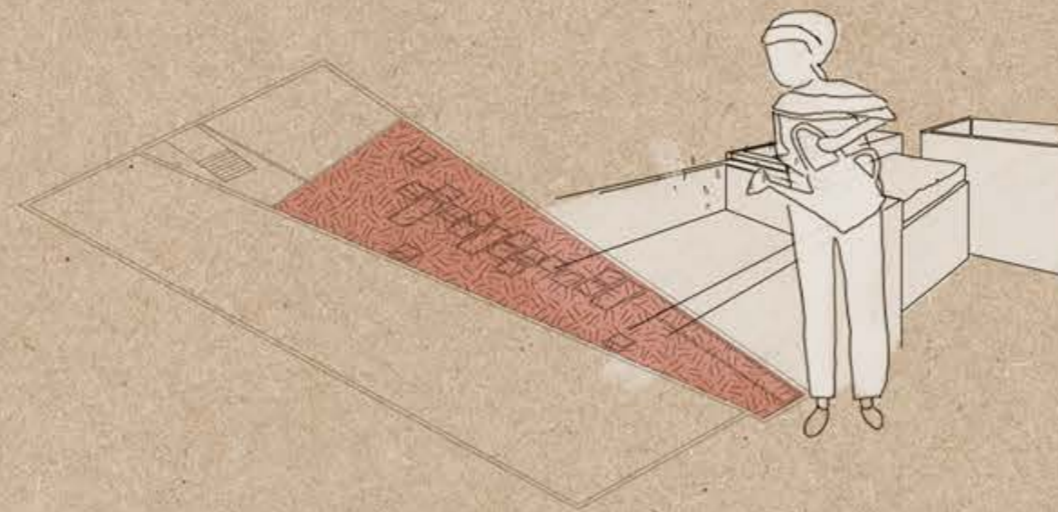
4-2

1-0

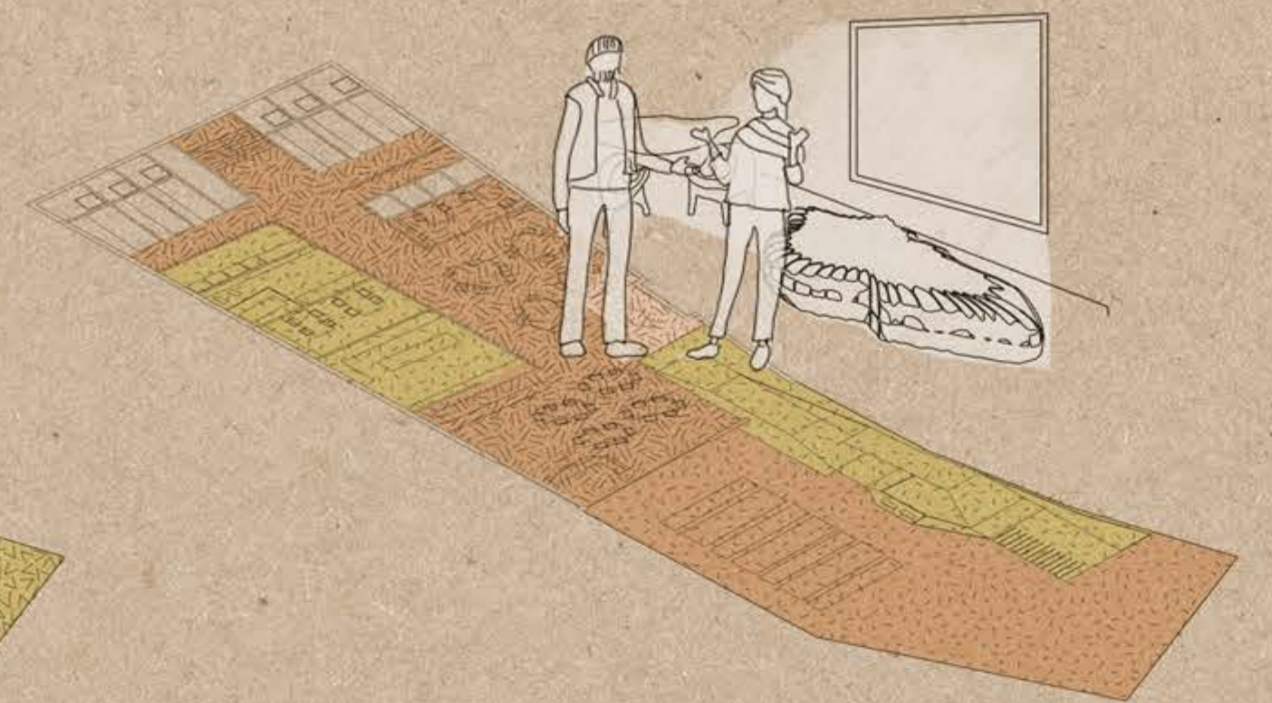
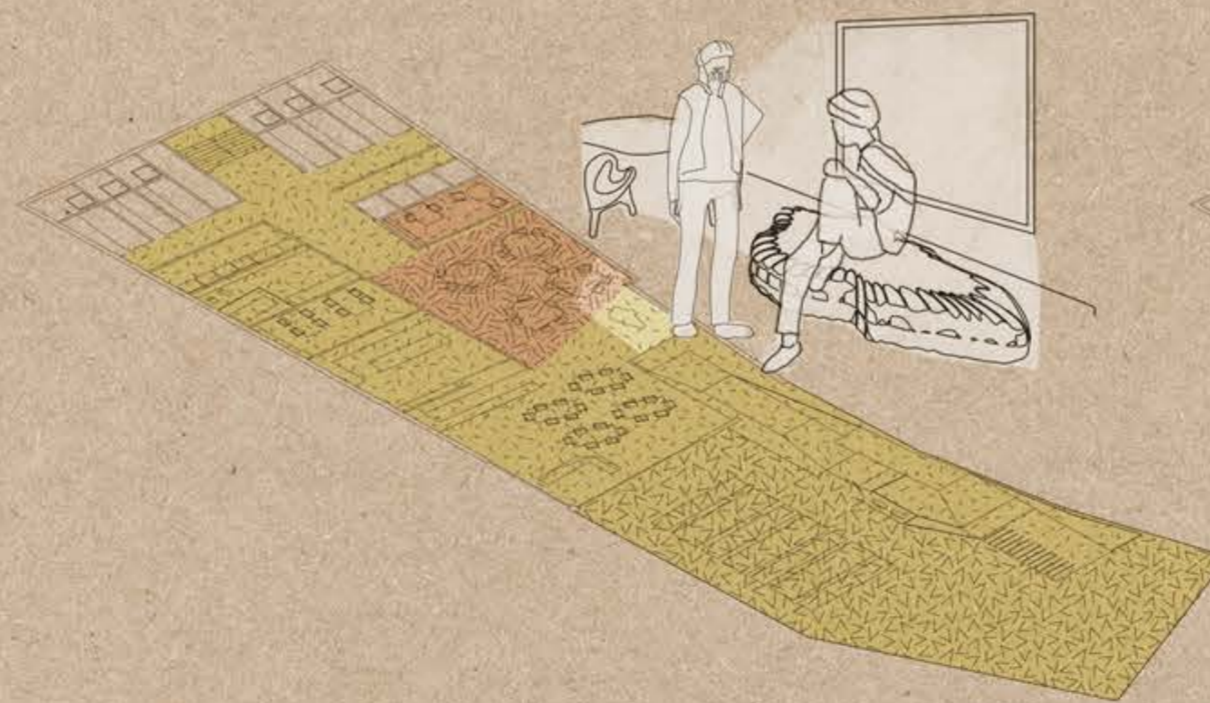
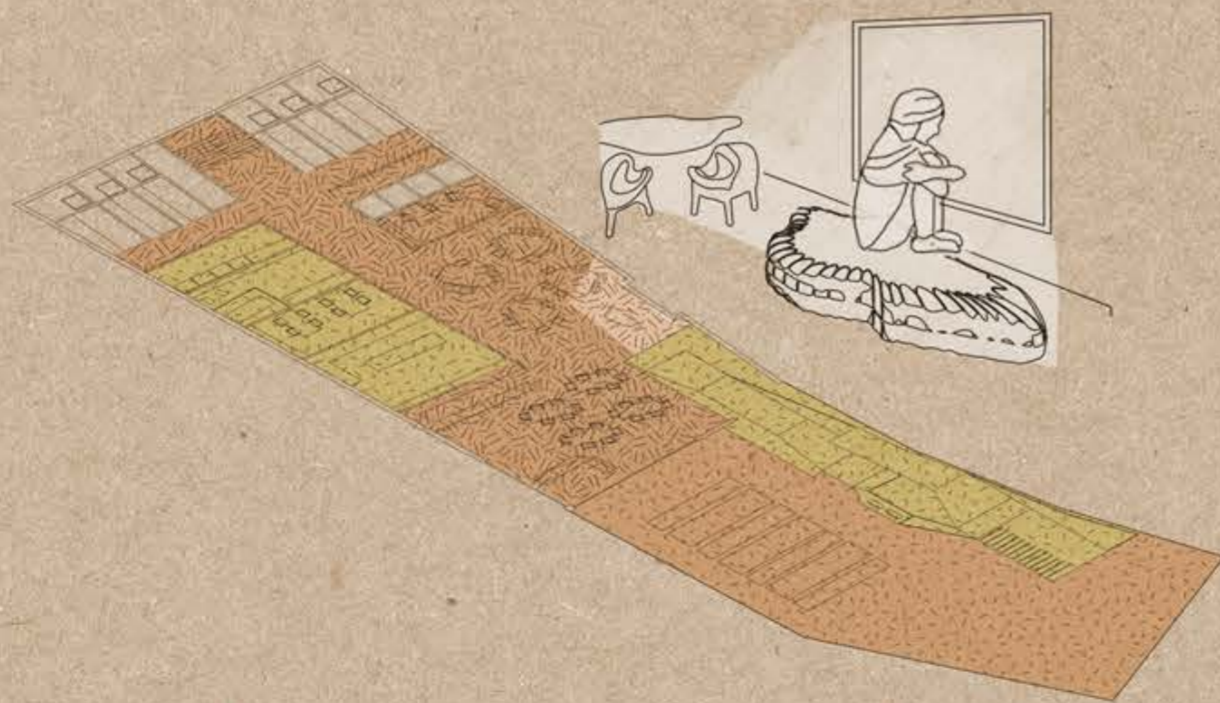
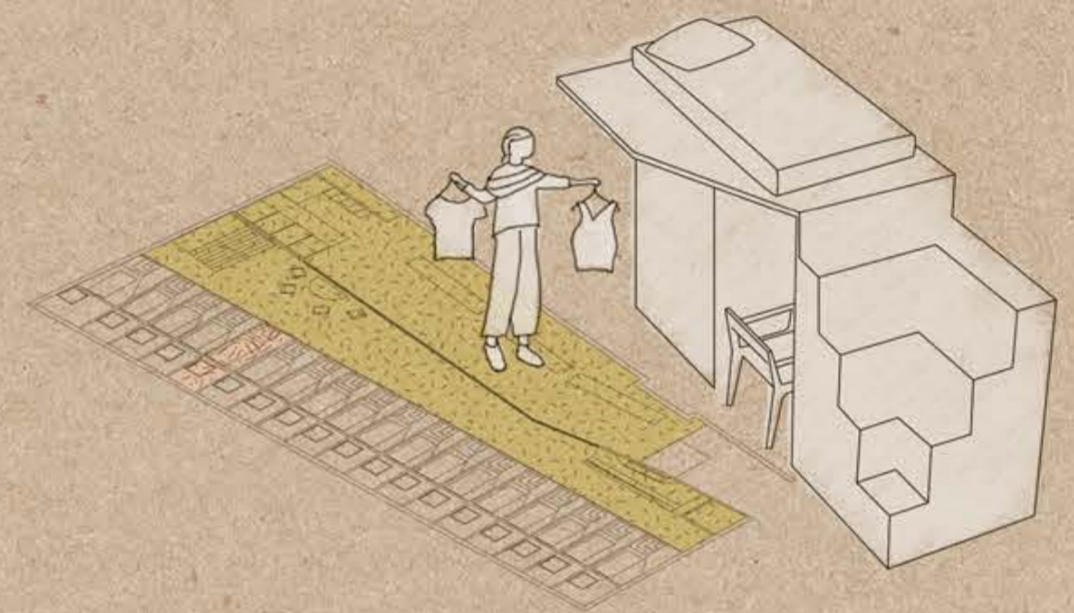
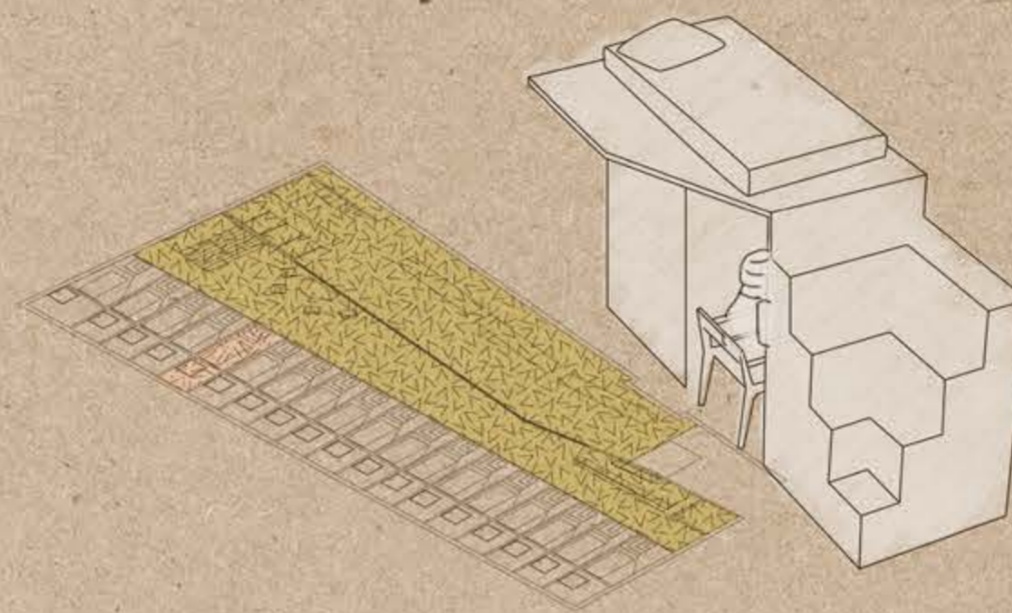
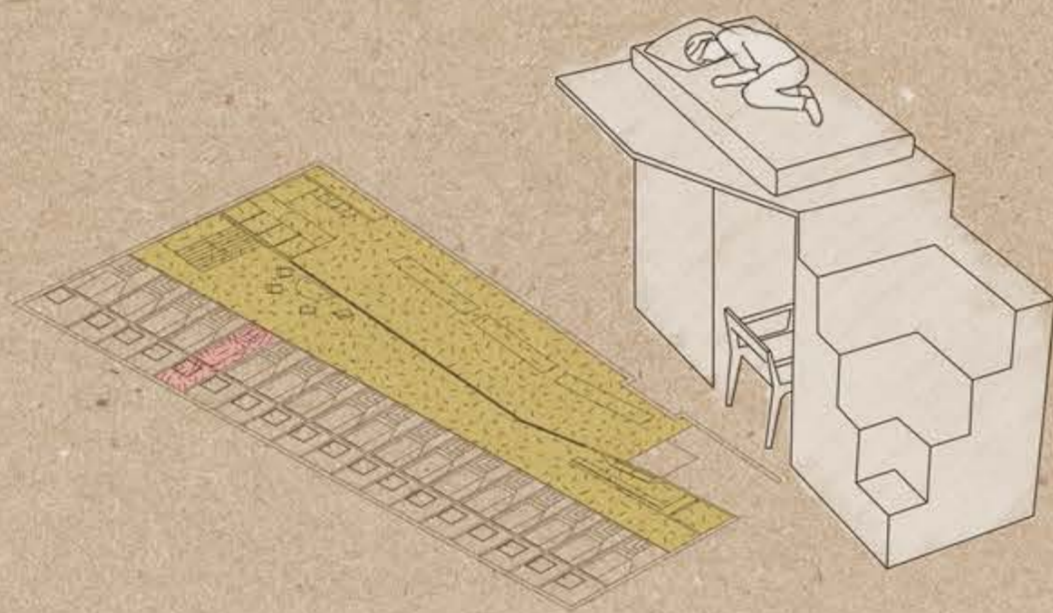
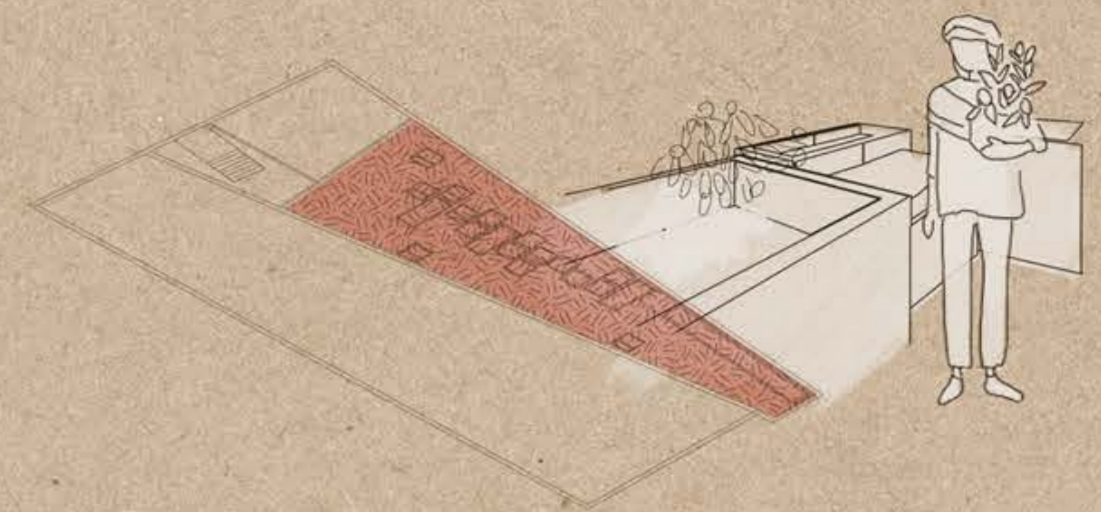
Month 1



Month 6



Month 12



"AMELIA" (and "PAUL")  
Spatial (-User) Relationships

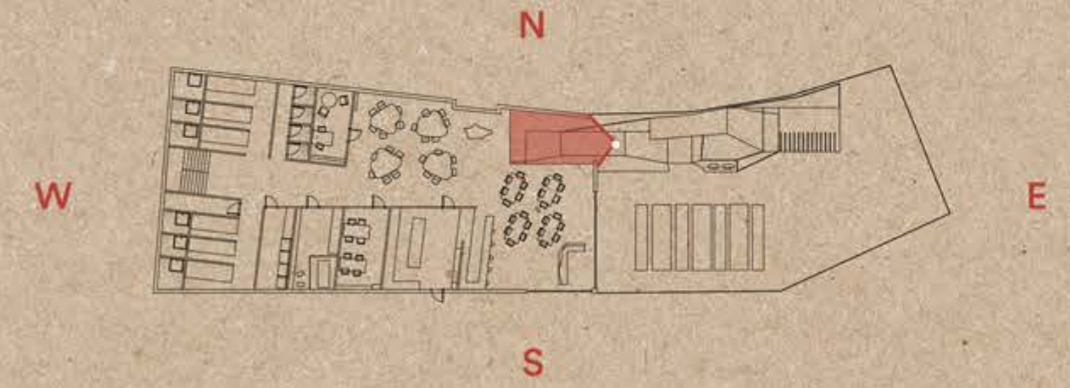




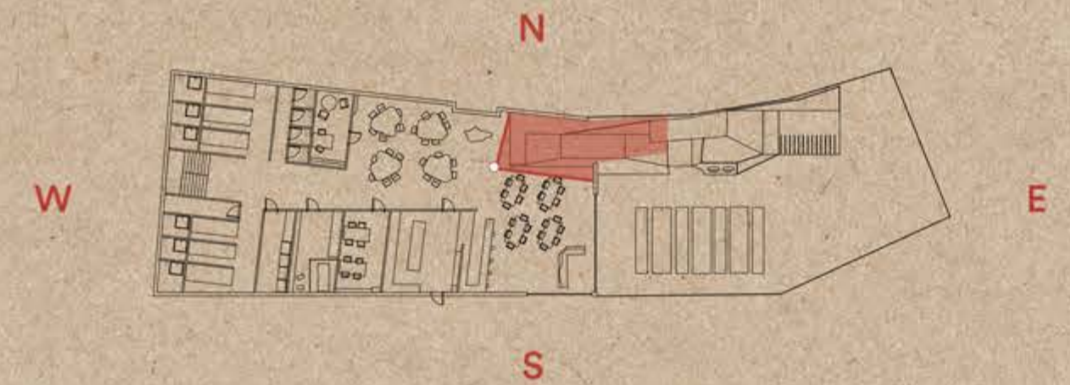
Section  
Scale 1:100



This area is designated to connect the owners and their companion by a window.



It also includes swing chairs that provide privacy. The large window allows natural light to pour in and offers a beautiful view to the Canterbury City Wall.



Prespectives (- Notations)