



# HAMLET HUB

## BUILDING TOGETHER

Hamlet Hub is a community-focused interior intervention within the historic Ragged School Museum in Tower Hamlets. Inspired by the building's connection to rag merchants and recycled textiles, the concept of Building Together uses layering, materiality and spatial connections to create environments that support wellbeing, learning and social interaction. The project brings together health services, community resources, study spaces and exchange facilities within a flexible and inclusive hub. Through thoughtful spatial sequencing, sensory material choices and community-centred design, Hamlet Hub demonstrates how interior architecture can strengthen social connections while celebrating the historic character and cultural significance of an existing building.

## HAMLET COORDINATES



46-50 COPPERFIELD ROAD  
LONDON  
E3 4RR

LATITUDE: 51.519892  
LONGITUDE: -0.035672



## THE NARRATIVE OF NEED

### THE FRICTION

Many families face barriers to accessing food, healthcare and community support. Rising living costs and limited local resources have increased the need for accessible spaces that promote wellbeing, connection and resilience.

### THE SOLUTION

- Reimagining a historic building for community use
- Supporting wellbeing, learning and connection
- Bringing people, services and spaces together

## THE FRAMEWORK

Building Together was inspired by the history of the Ragged School Museum and its links to rag merchants and recycled textiles. Exploring layering through fabrics and materials led to the idea of stacked building blocks. These blocks symbolise how people, services and spaces can come together to create a stronger community. This concept influenced the layouts, layered materials and connected spaces.

## TARGET USERS



LOCAL COMMUNITY



STUDENTS



LOCAL FAMILIES

BRINGING PEOPLE AND SPACES TOGETHER

# CONNECTING SPACES



FRONT FACADE

ENTRANCE VIA  
COPPERFIELD ROAD



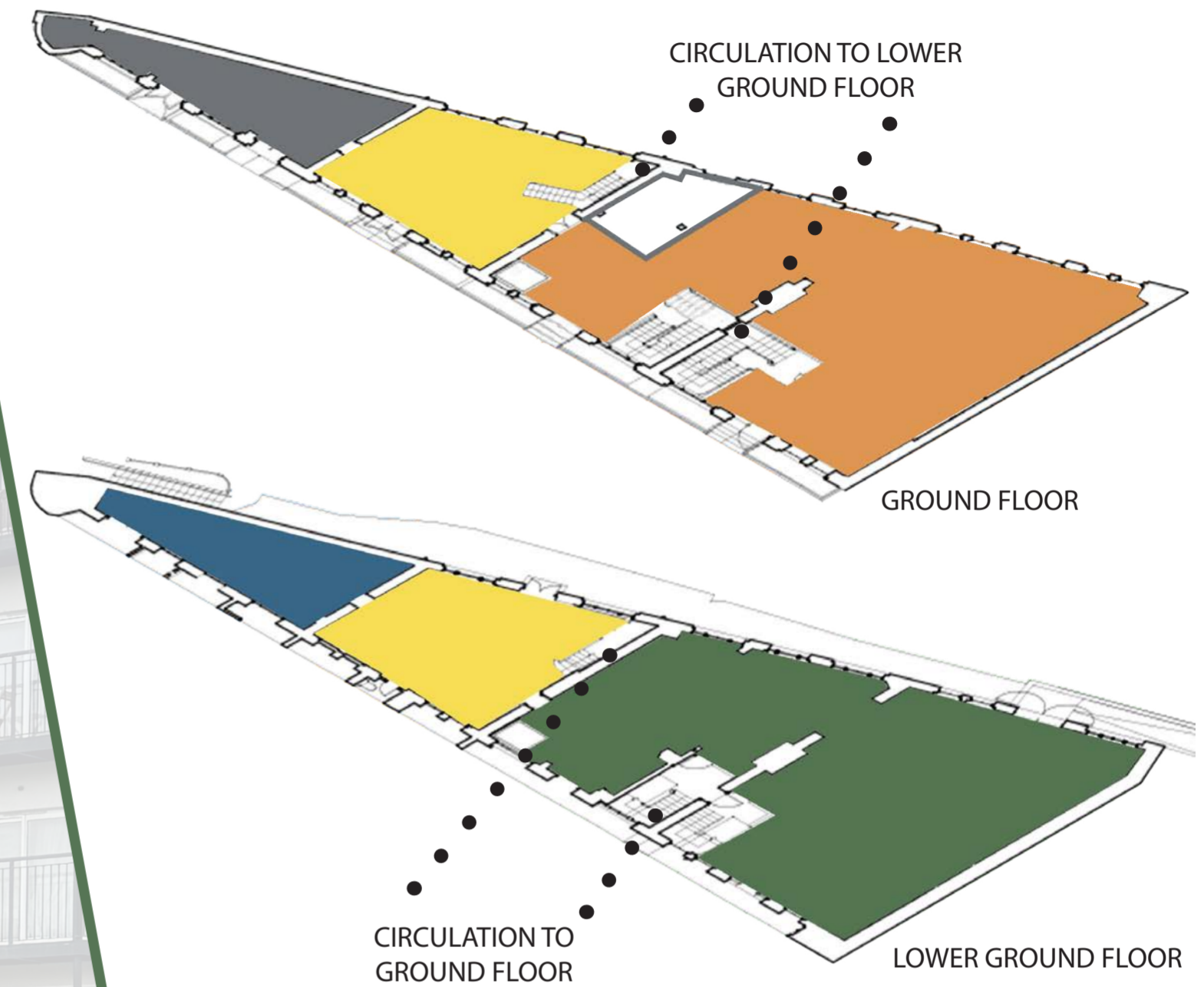
REAR FACADE

ENTRANCE VIA REGENT'S  
CANAL PATH

## FACADE MAPPING

This mapping illustrates how the programme is organised throughout the building, highlighting the relationship between community, health, study and exchange spaces. The spatial arrangement supports a clear journey from public to private functions, creating intuitive circulation and strong connections between floors. By working within the existing historic structure, the interventions respect the character of the building while establishing a cohesive and accessible community environment.

# USERS JOURNEY



## KEY

<span style="display: inline-block; width: 15px; height: 15px; background-color: yellow; border: 1px solid black; margin-right: 5px;"></span> Welcome	<span style="display: inline-block; width: 15px; height: 15px; background-color: orange; border: 1px solid black; margin-right: 5px;"></span> Community
<span style="display: inline-block; width: 15px; height: 15px; background-color: white; border: 1px solid black; margin-right: 5px;"></span> Laundrette	<span style="display: inline-block; width: 15px; height: 15px; background-color: blue; border: 1px solid black; margin-right: 5px;"></span> Study
<span style="display: inline-block; width: 15px; height: 15px; background-color: grey; border: 1px solid black; margin-right: 5px;"></span> Clothing	<span style="display: inline-block; width: 15px; height: 15px; background-color: green; border: 1px solid black; margin-right: 5px;"></span> Health

Colours visually map the building's key functions, supporting clarity, navigation and spatial understanding.

FROM ARRIVAL TO SUPPORT, EACH SPACE IS CONNECTED THROUGH PURPOSE AND EXPERIENCE.

# LOWER GROUND FLOOR



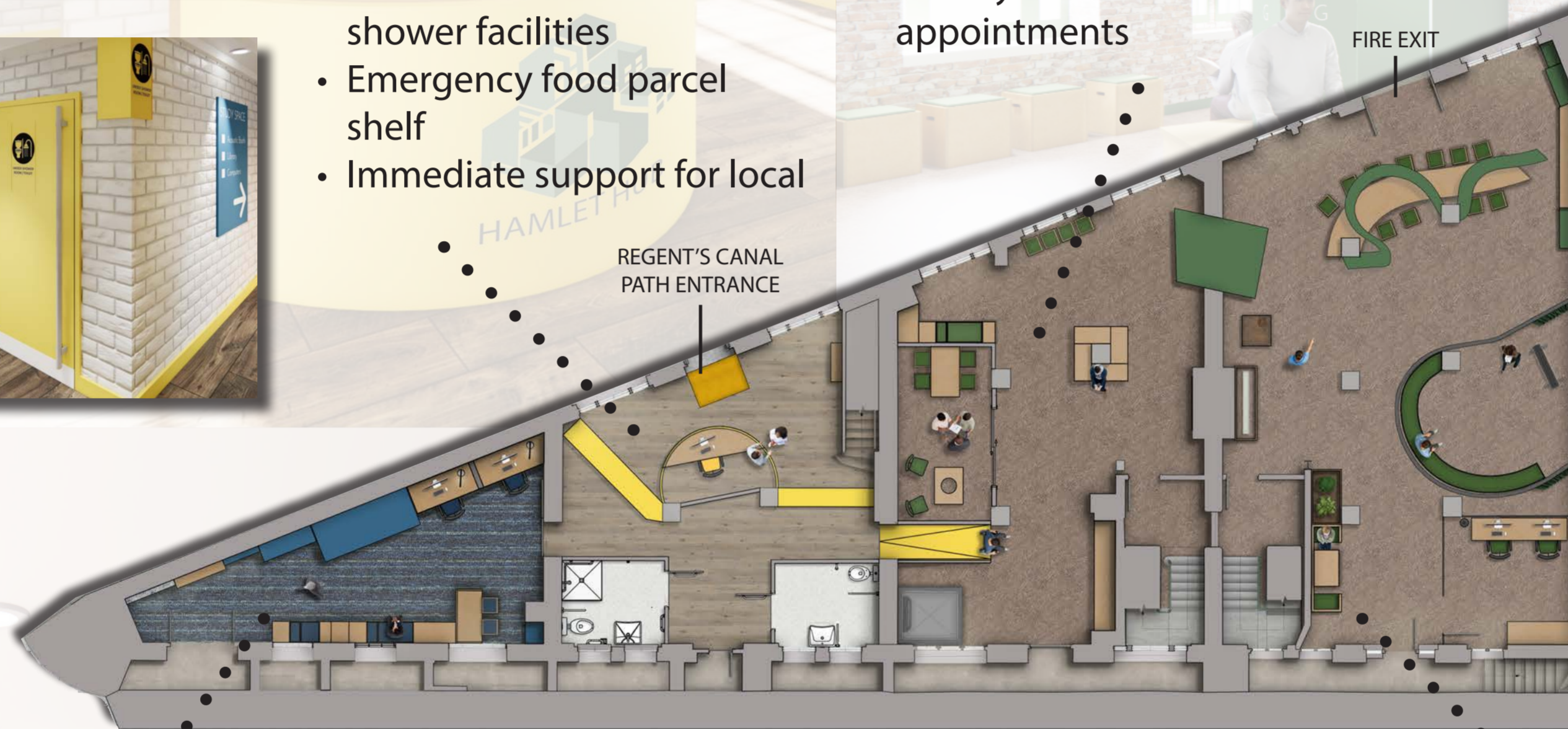
## WELCOME

- Accessible community arrival space
- Clear wayfinding and navigation
- Self check-in linked to health services
- Accessible toilet and shower facilities
- Emergency food parcel shelf
- Immediate support for local



## HEALTH 01

- Waiting area and private consultation rooms
- Community information and support services
- Central insertion tunnel creates openness and flow
- Privacy maintained for one-to-one appointments



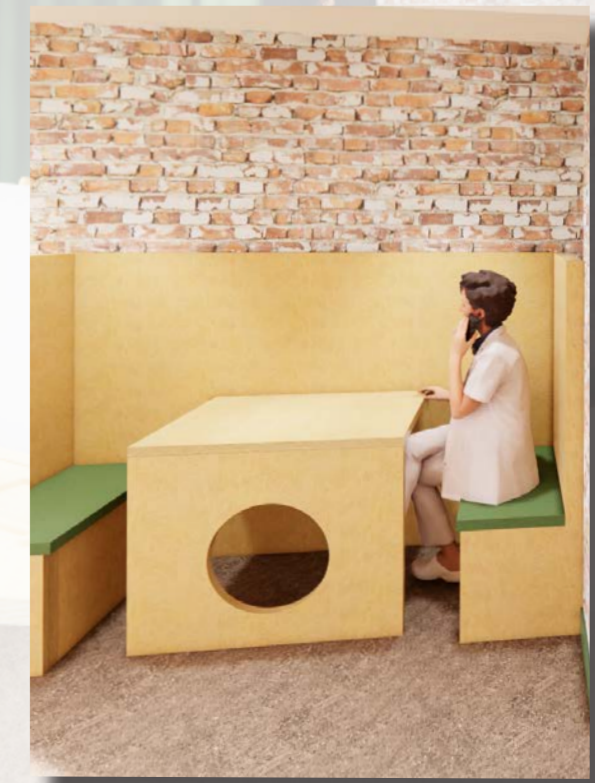
## STUDY

- Flexible space for reading, studying, and quiet working
- Computer workstations and bookcase support learning and research
- Acoustic booth provides a private area for focused work
- Calm environment designed to support concentration and wellbeing

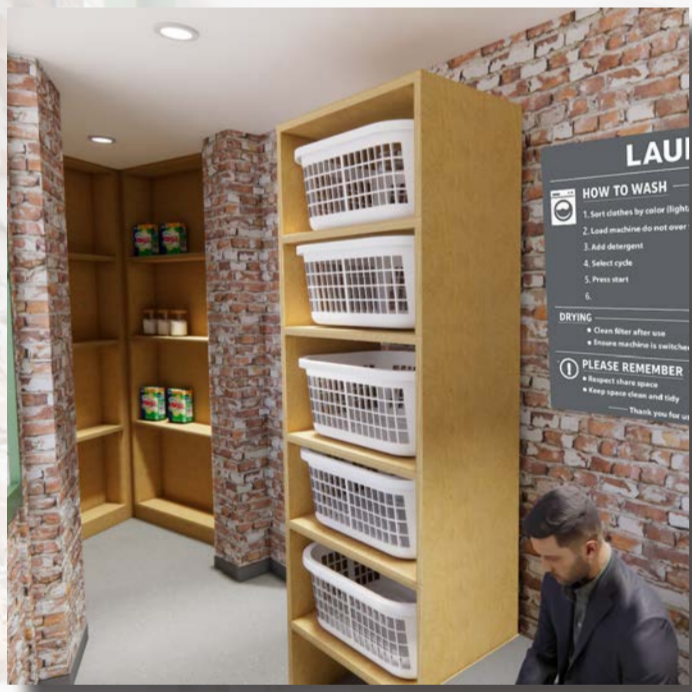


## HEALTH 02

- Flexible space for workshops, presentations and group activities
- Dedicated area for private one-to-one support sessions
- Custom furniture designed for staff and community interaction
- Green accents promote wellbeing, unity and connection



# GROUND FLOOR



## WELCOME

- Main community entrance from Copperfield Road
- Food and clothing donation drop-off point
- Pop-up essentials shop for everyday needs
- Welcome desk and living herb planter
- Designed to create an inviting and community-focused environment

## CLOTHING

- Retail-inspired clothing exchange
- Professionally cleaned donated clothing
- Promotes dignity and personal choice
- Inclusive space for browsing and selection
- Supports clothing redistribution within the community



## COMMUNITY

- Shared kitchen for cooking classes and community use
- Communal dining area for social interaction
- Children's play space to support families
- Pantry providing accessible ingredients
- Encourages learning, connection, and community engagement

## LAUNDRETTE

- Community laundrette for public and Hamlet Hub use
- Washes and prepares donated clothing for redistribution
- Independently accessible from the main building
- Functions as the primary accessible entrance
- Supports inclusivity and ease of access



# LAYERS OF EXPERIENCE

## LAYERS OF SUPPORT

### HEALTH

- NHS drop-in sessions
- Health workshops
- One-to-one support

### COMMUNITY

- Shared dining
- Clothing exchange
- Food support

### LEARNING

- Study facilities
- Digital access
- Community education

### SKILLS

- Cooking classes
- Sewing workshops
- Planting sessions



Hamlet Hub combines health, learning and community support through partnerships with NHS services, health workshops and cooking classes that promote healthy lifestyles and respond to local community needs.

BUILDING TOGETHER FOR A HEALTHIER, MORE CONNECTED TOWER HAMLETS.



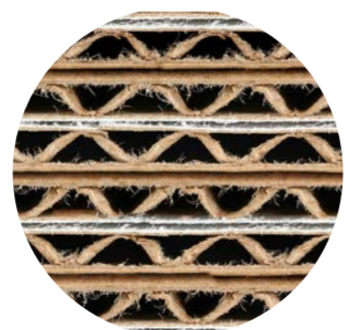
SECTION A

## MATERIALITY

Material selection was guided by the concept of Building Together, using layered materials to reflect the project's connection to recycled textiles and the history of the Ragged School Museum. Materials such as plywood, cardboard and textiles celebrate visible layers, texture and reuse while reinforcing themes of community and resilience. These interventions work alongside the existing historic fabric, balancing preservation with contemporary community use while maintaining the character of the building.



PLYWOOD



CARDBOARD



TEXTILES



Section A illustrates the spatial journey through Hamlet Hub, showing how health, study, exchange and community spaces connect across the building. The organisation of spaces creates a clear progression from public community-focused areas to more private support environments, encouraging accessibility, wellbeing and social interaction. As the core of the project, the health and community spaces promote shared experiences and engagement, while the upper floors demonstrate opportunities for future growth and adaptation within the historic building. The section also highlights how the design brings together people, services and spaces to support everyday community life.