

Wonderland Theatre academy Theatre academy for kids 7-18 years

Trace building (224-232 St. John Street)

Ivanka Stancheva
21470550

Wonderland Theatre academy is a school for performing arts for kids from 7 to 18 years old. The venue offers to the young talents and visitors many options for education and entertainment:

- Theatre hall with 130 seats
- Two open gardens
- Coffee and breakfasts on the ground floor
- Two separate entrances for the academy and for the Theatre
- Education rooms on the three floors
- Management offices on the third floor

- Cocktail bar with open terrace
- Toilets for guests and for the kids
- Showers in the backstage area
- Big outside staircase with seating spaces
- Two bridges on the 1st and 2nd floor connect the education area with the backstage
- Security barrier control
- Disabled access
- Two receptions
- Two lifts



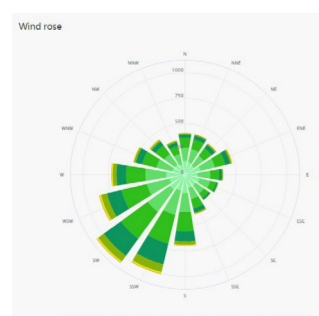
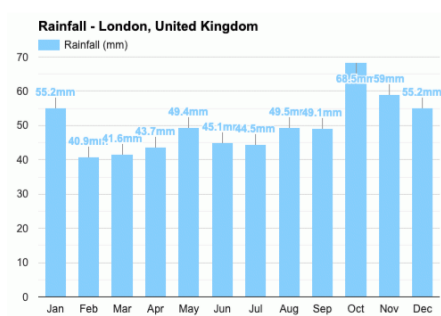
- Main building
- Roads
- Sun path
- Neighbor buildings
- Public transport
- Wind direction



Wonderland Theatre Academy for is an innovative architectural project designed to provide a nurturing environment for children and teenagers, aged 7 to 18, to explore the world of performing arts. Rooted in the principles of social justice, this visionary space aims to break down barriers, foster inclusivity, and empower young individuals from all walks of life.

The architecture of the Theatre Academy is carefully crafted to accommodate the diverse needs of its students. The space is designed to be wheelchair accessible, with ramps and elevators seamlessly integrated into the building's layout. Every area is thoughtfully designed to accommodate varying physical abilities.

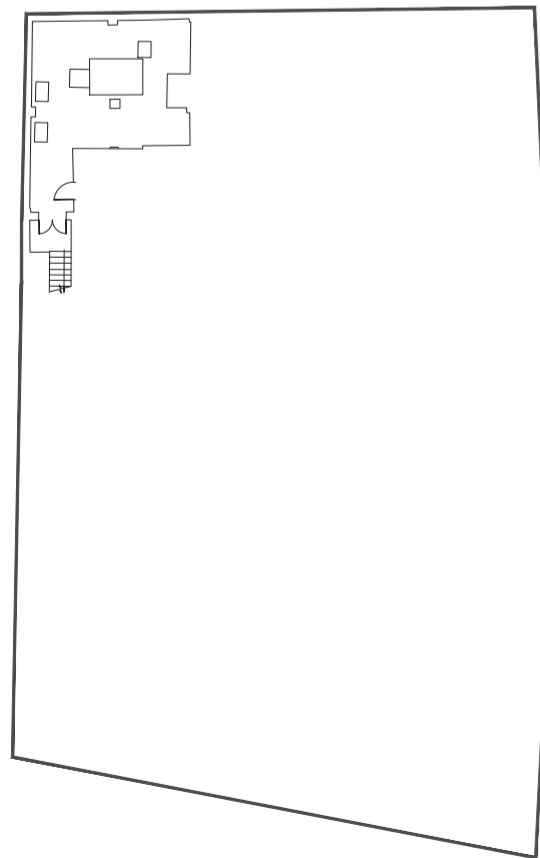
The design of the spaces also facilitates collaboration among students of different ages, encouraging mentorship and the exchange of ideas.



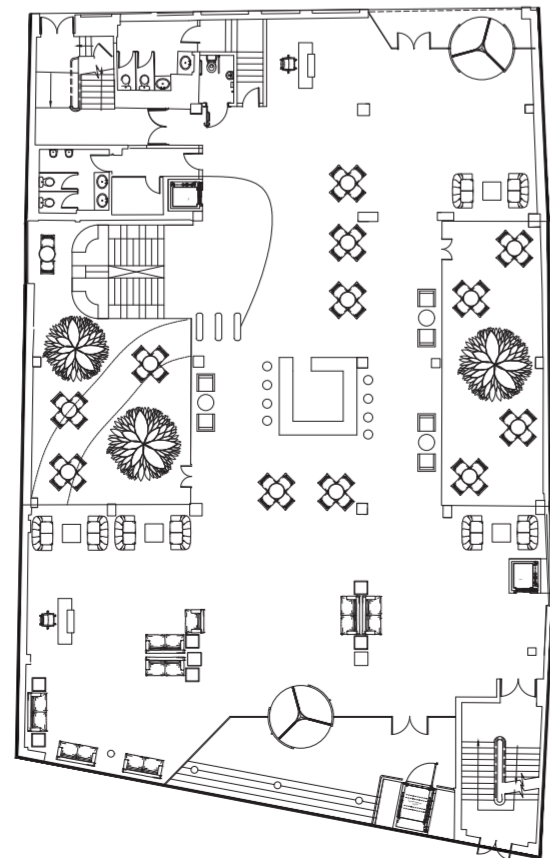
Climate Graph for London

Study the climate data for Kew Gardens, London.

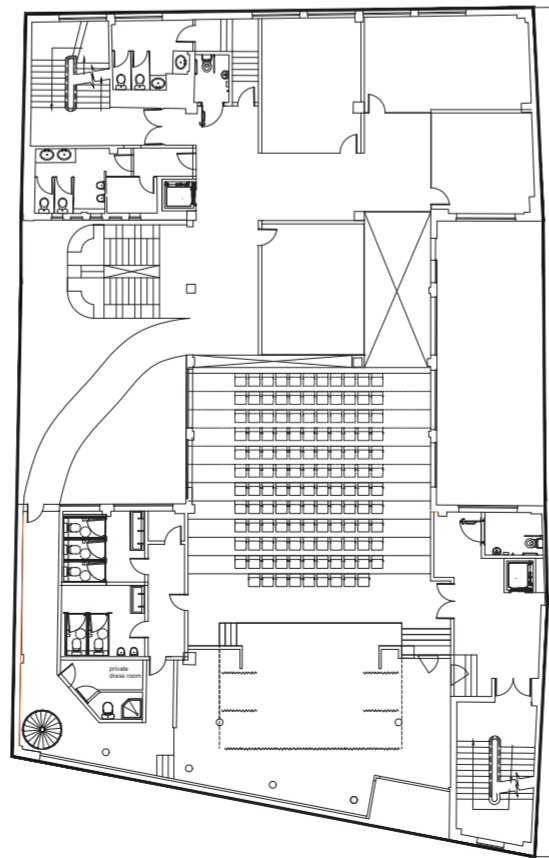
Month	Jan	Feb	Mar	Apr	May	Jun	Jul	Aug	Sep	Oct	Nov	Dec
Maximum Temp (°C)	8	9	12	14	18	21	24	23	20	16	11	9
Rainfall (mm)	57	42	43	45	49	49	47	51	52	70	61	57



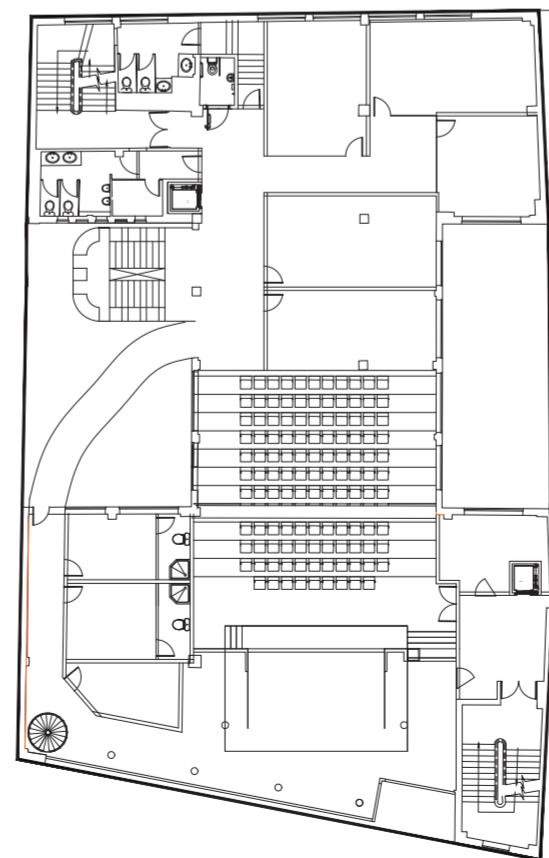
PROPOSED BASEMENT PLAN



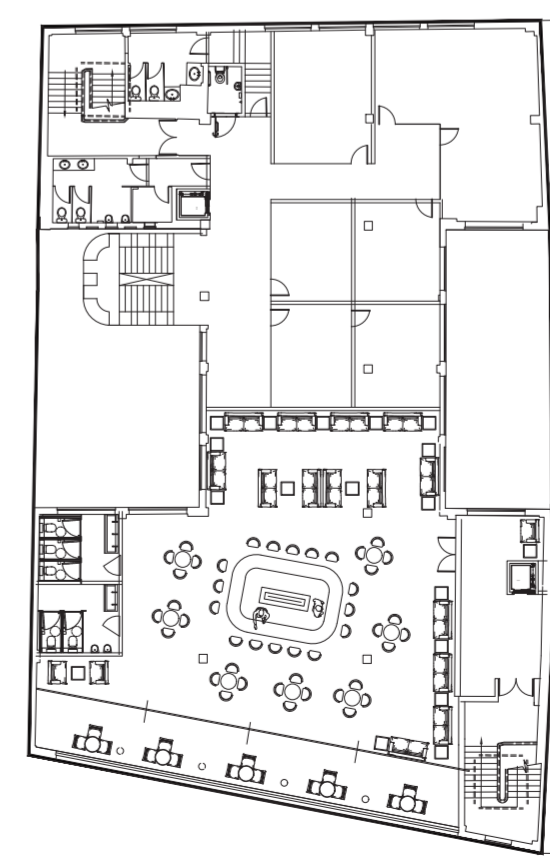
PROPOSED GROUND FLOOR PLAN



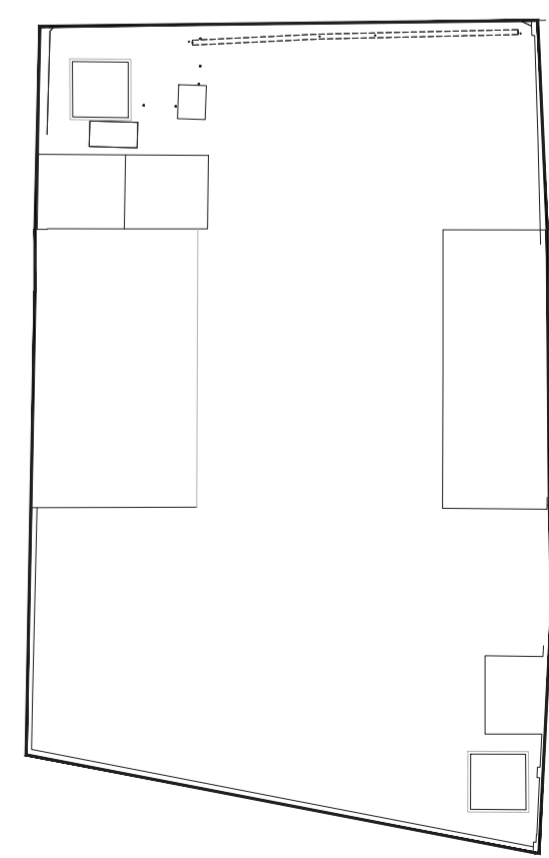
PROPOSED FIRST FLOOR PLAN



PROPOSED SECOND FLOOR PLAN



PROPOSED THIRD FLOOR PLAN



PROPOSED ROOF PLAN



- Theatre academy entrance
- Theatre atrium entrance
- Coffee and breakfast area
- Fire exit
- Lift
- Gardens
- Security barrier zone
- Cocktail bar
- WC

