

BRIDGING ACCESSIBILITY, INNOVATION, AND COMMUNITY.

Clara Pereira

This project transforms the outdated and inaccessible North Acton Underground Station into a multi-level civic hub. By elevating the station to street level, it becomes part of a new pedestrian overpass that enhances accessibility and redefines the site as a public space. The design connects to the north side of the site, currently lacking access, responding to the area's rapid development and future growth. Below, the existing square is preserved and reactivated as a commercial hub supporting local economy and nightlife. A dedicated cycling lane loops around the station, separated from pedestrian flows to promote active travel and safe circulation. Above, new social spaces host co-working areas, workshops, a gallery, and a rooftop restaurant with terraces. Sustainable strategies, including kinetic energy tiles, green roofs, and a living façade, enhance performance while reflecting future-facing values. Recycled and reclaimed materials reinforce the site's industrial character, turning infrastructure into an inclusive civic threshold.

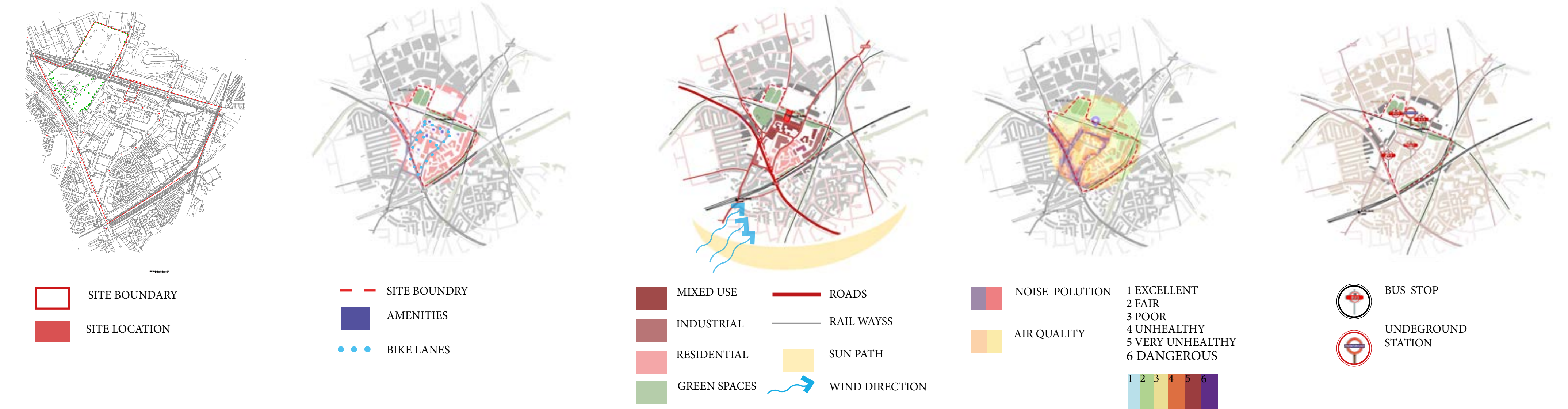


Existing site



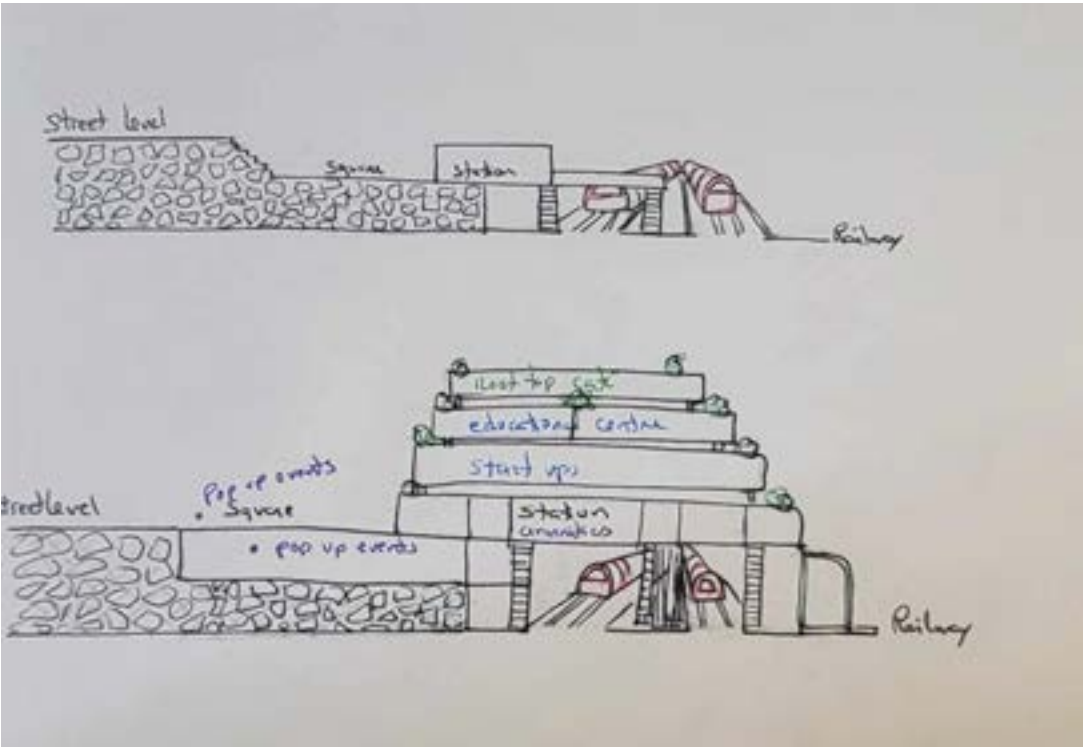
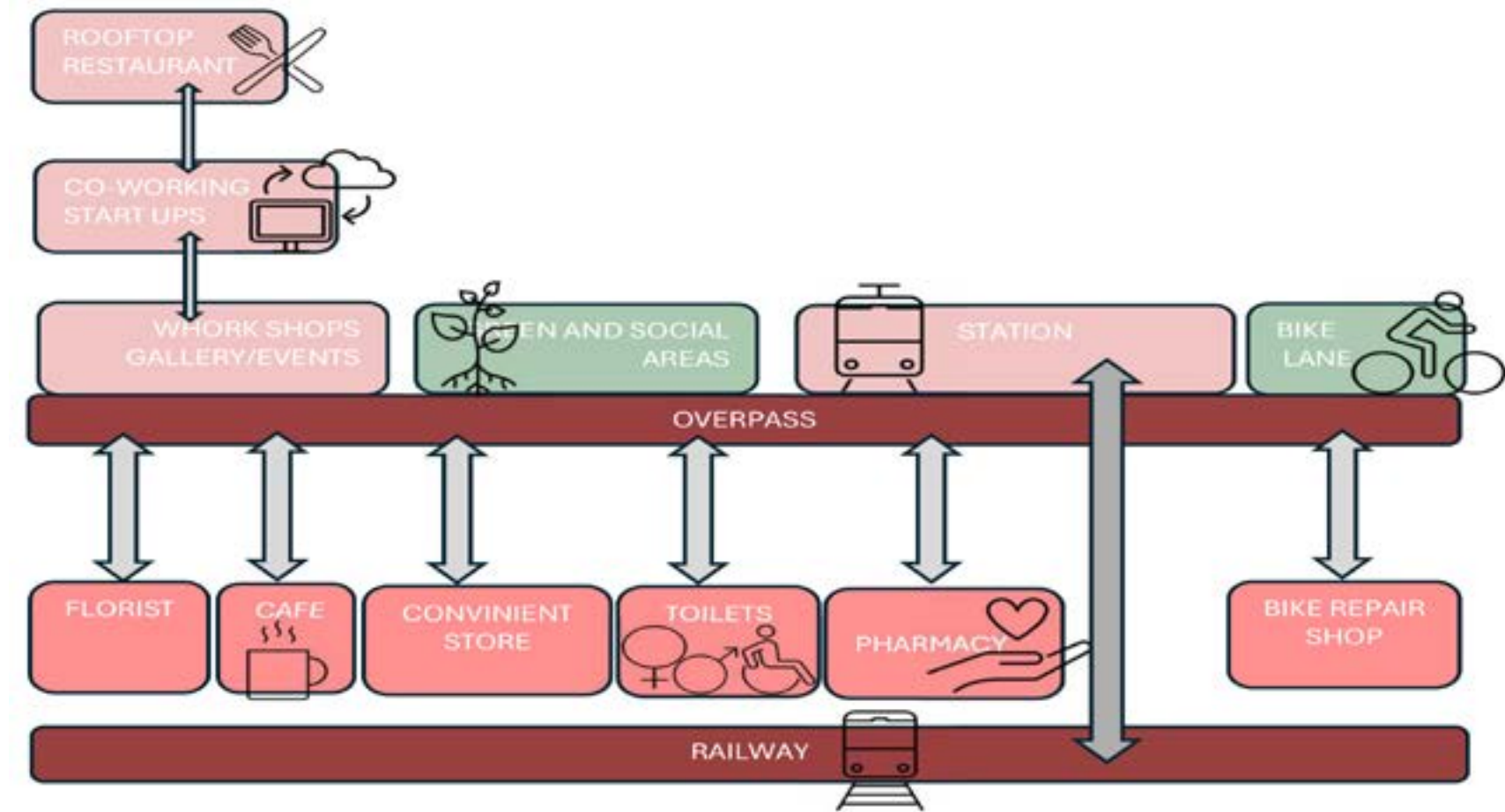
Urban Issues Identified in Site Analysis

North Acton is marked by a lack of social infrastructure, with limited public amenities, green space, or opportunities for community engagement. Dominated by busy roads, rail lines, and ongoing construction, the area feels fragmented and inhospitable. As new co-residential developments rapidly emerge, there is a growing need to rebalance the site with inclusive public spaces, co-working environments, and green infrastructure that foster social interaction and urban wellbeing.



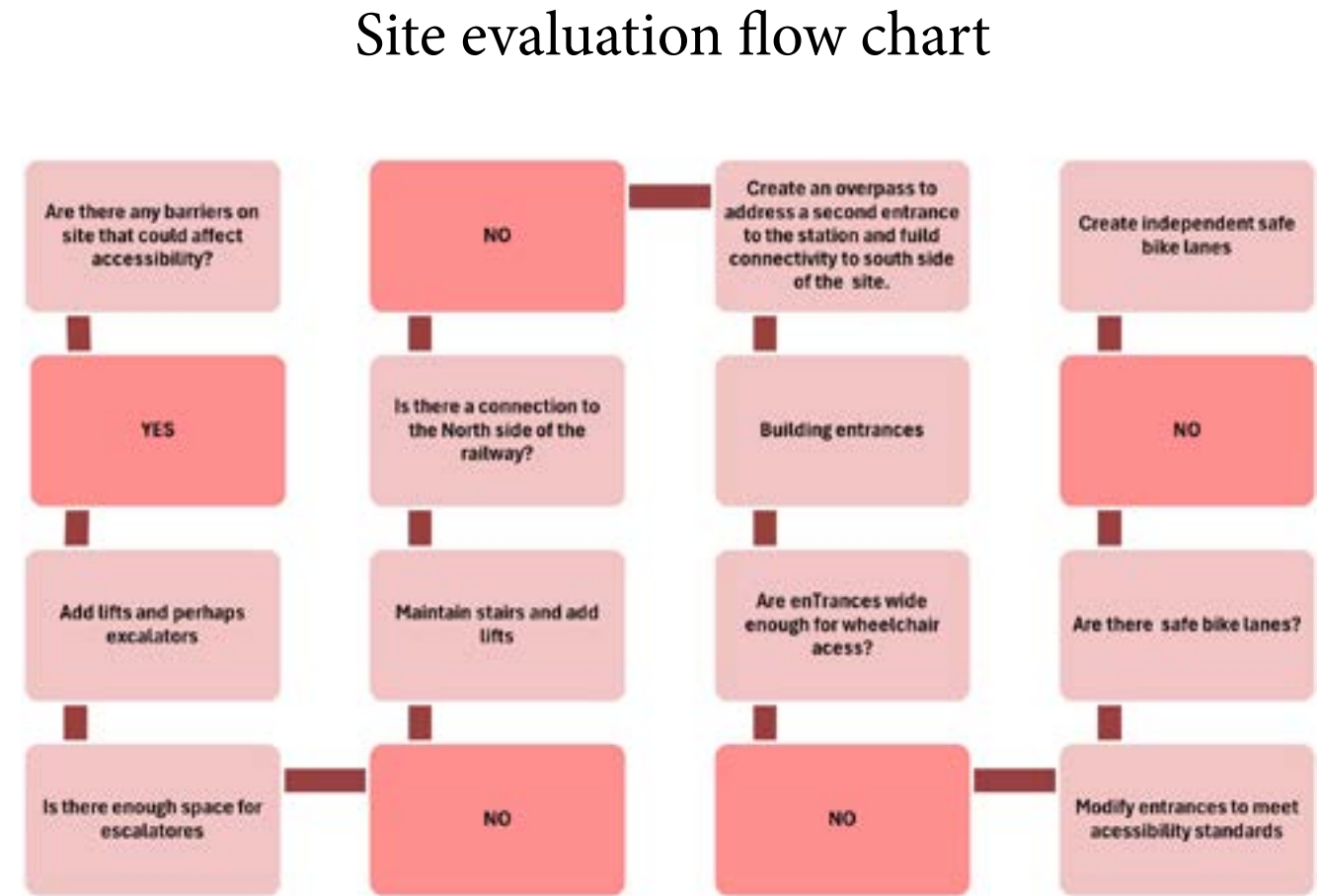
Opportunities & Design Response

The proposal transforms a neglected site into a civic landmark by introducing a green, multifunctional overpass. Addressing the lack of amenities, social space, and greenery, the design activates the area with co-working spaces, an educational hub, and a rooftop restaurant, and a gallery, supporting both day and night use. Green roofs and vertical walls enhance biodiversity and help absorb noise and pollution, while new pedestrian and cycling paths reconnect the urban fabric. The design creates a healthier, more inclusive environment where community, economy, and ecology intersect.

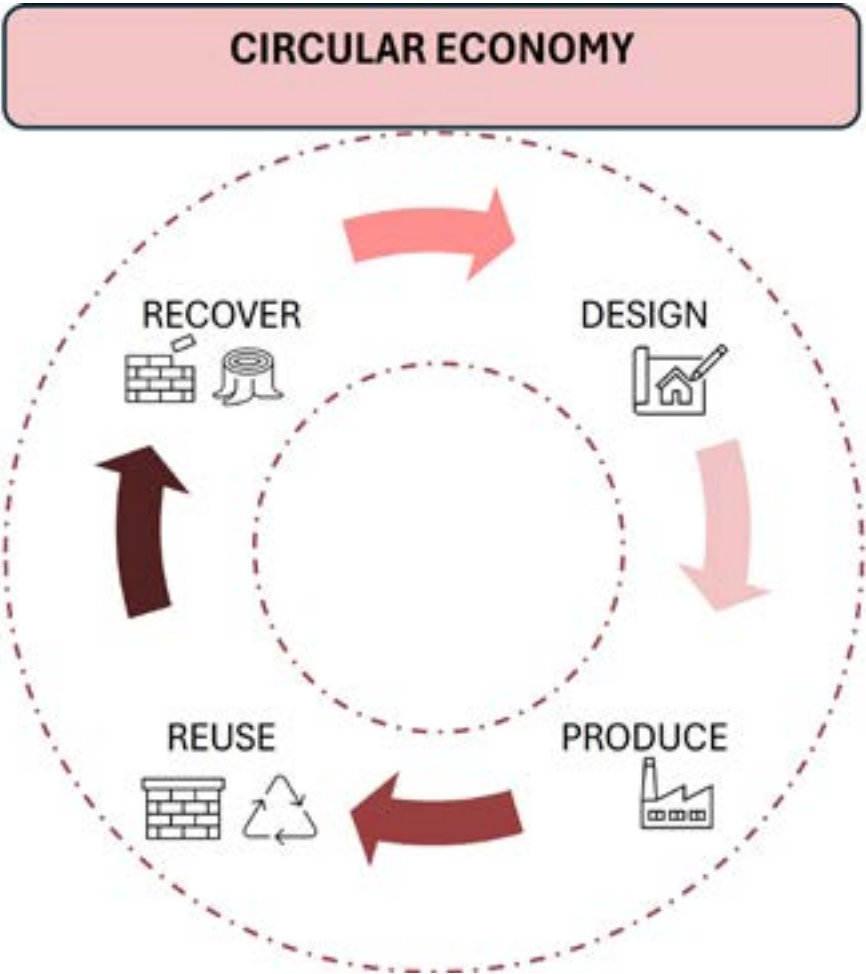


Designing a Connected, Green, and Resilient Urban Node

This page outlines the foundation of the design response, beginning with a critical evaluation of site barriers, accessibility, and circulation. The proposed intervention addresses the lack of social infrastructure and environmental quality in North Acton by introducing vertical green systems, active travel lanes, and inclusive design solutions. A circular economy approach underpins the choice of materials and energy systems, including kinetic tiles that generate power from foot traffic. Together, these elements aim to transform an overlooked transit zone into a vibrant, sustainable, and multifunctional urban destination that prioritizes health, inclusivity, and ecological resilience.



Identifying Barriers and Opportunities
This diagram assesses current obstacles to accessibility and connectivity on site. It highlights the lack of safe pedestrian and bike routes, insufficient access for users with mobility needs, and limited public circulation spaces. These findings informed the design's goal to reconnect and activate the site through inclusive, well-connected infrastructure.



Sustainable Life Cycle Approach
The project follows a circular design methodology, aiming to reduce waste and extend material life. The diagram illustrates how materials are recovered, reused, and reintroduced into the system, supporting a more regenerative and resilient urban development strategy.

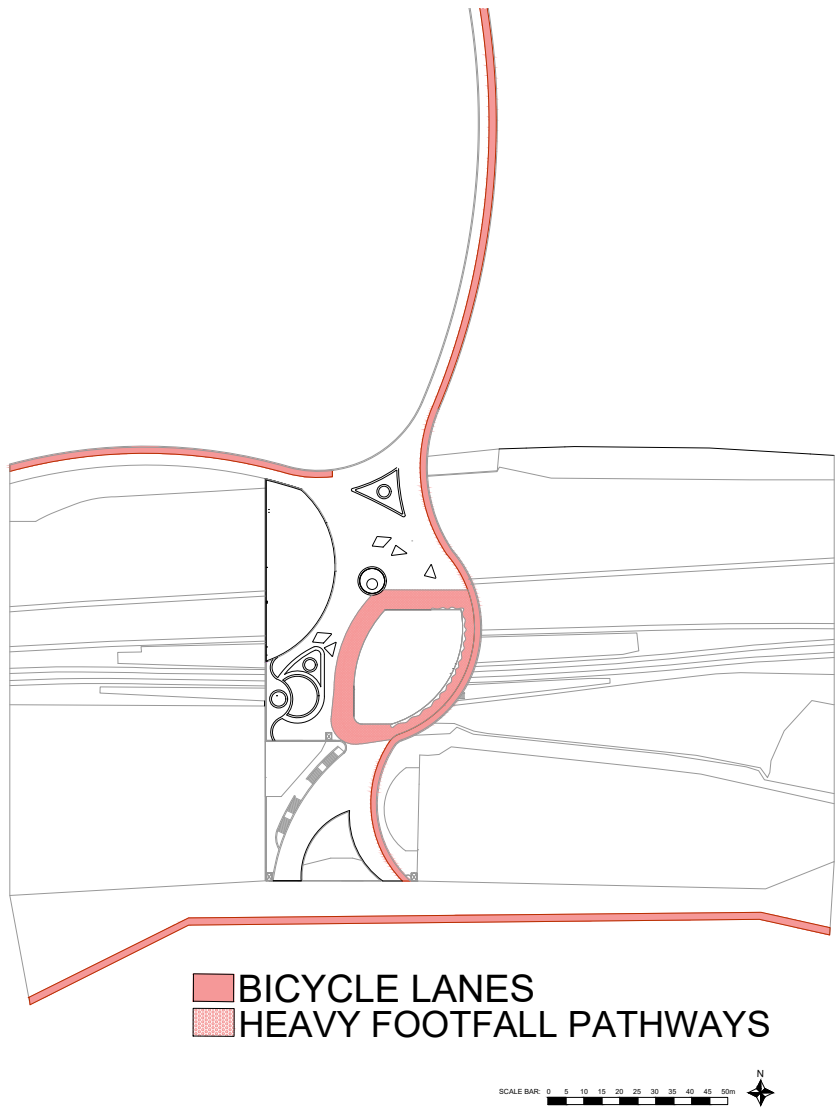


Eco-conscious Materiality
The project adopts a circular economy approach by integrating reclaimed bricks, recycled rubber, cork, timber, and perforated steel, all selected for their durability, low carbon footprint, and rich materiality. Recycled and repurposed elements are also used in urban furniture and public features. As part of the zero-waste strategy, underground waste bins are discreetly integrated across the site, allowing for efficient, hygienic separation of general, recyclable, and organic waste. Together, these design choices reduce environmental impact while enhancing functionality and visual harmony in the public realm.

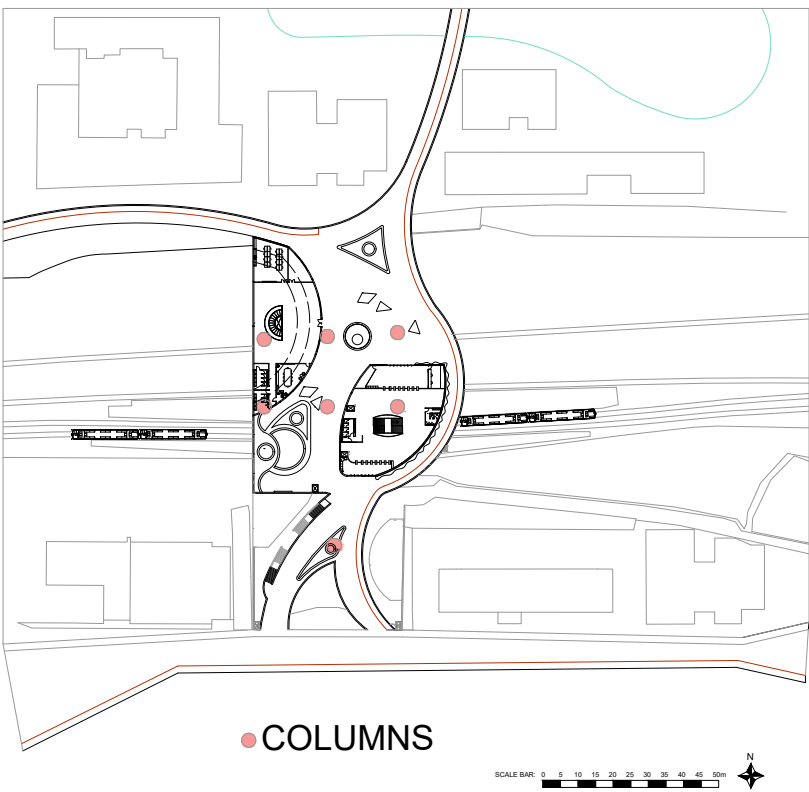
Spatial and Technical Integration

The structural grid ensures modularity and flexibility, accommodating a mix of programs across levels. Kinetic tiles embedded in high-footfall zones generate clean energy, while dedicated bike lanes and vertical circulation routes promote sustainable, healthy mobility across the site.

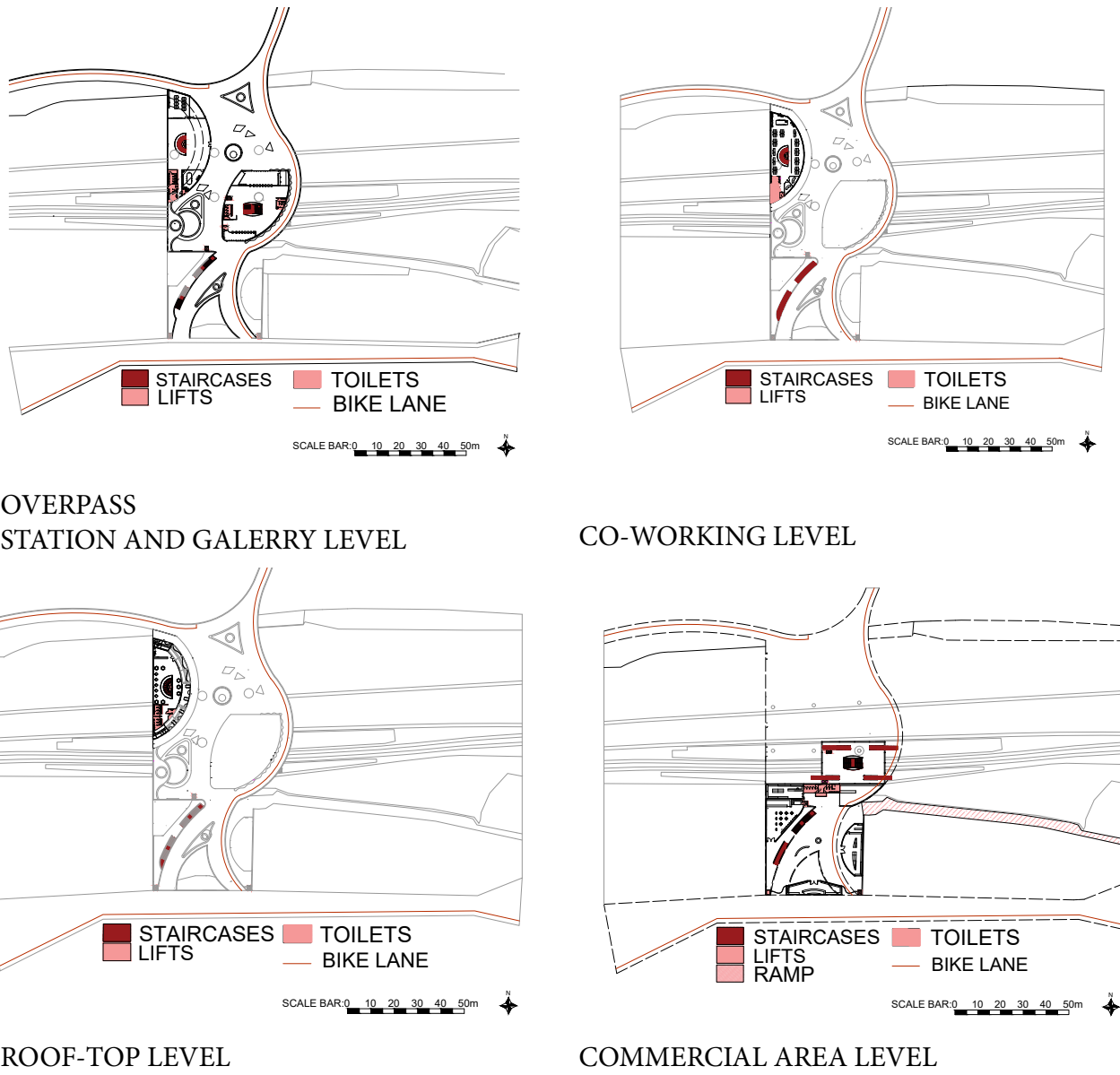
Bicycle lanes and kinetic tiling

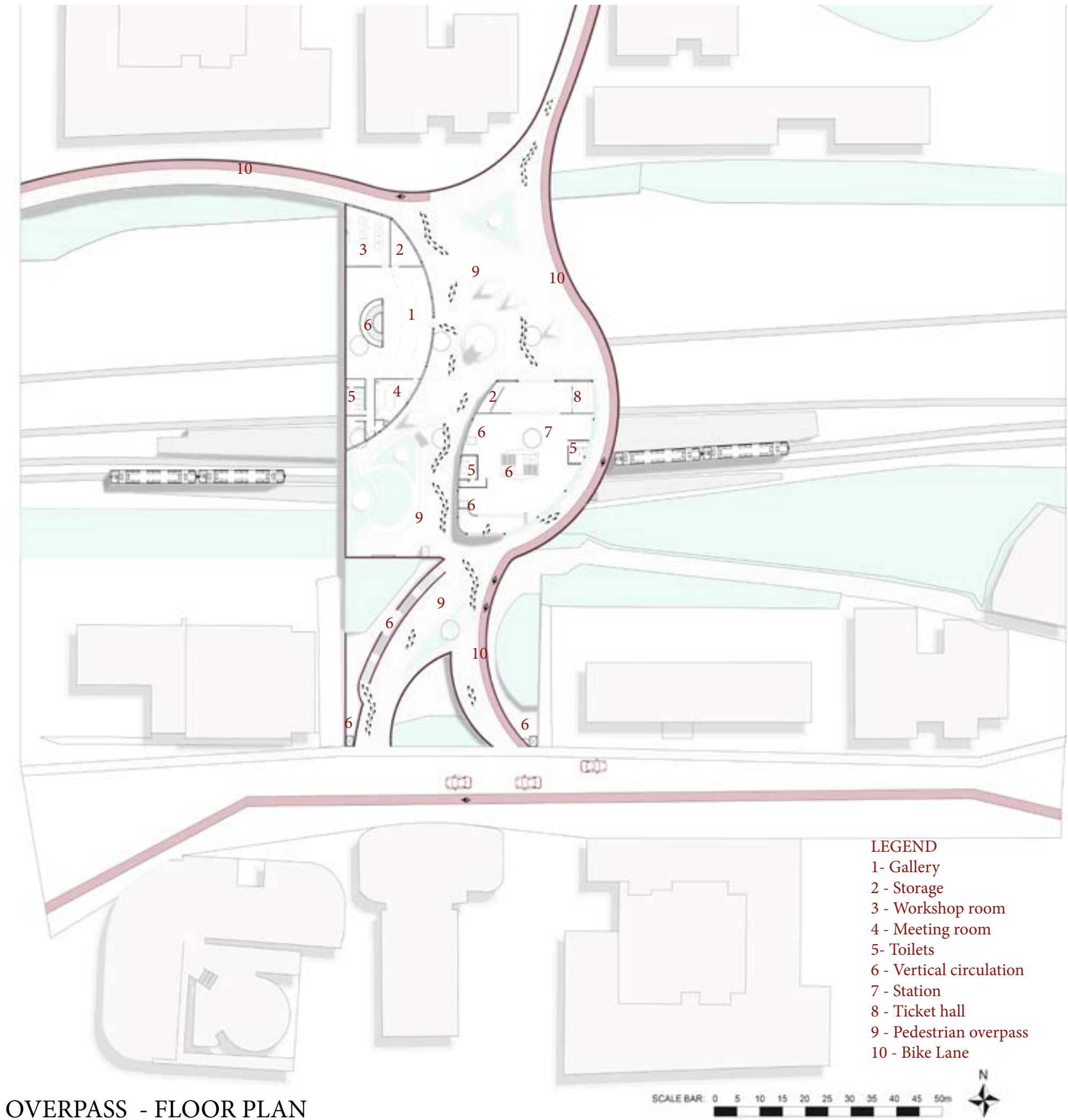


Column structure grid

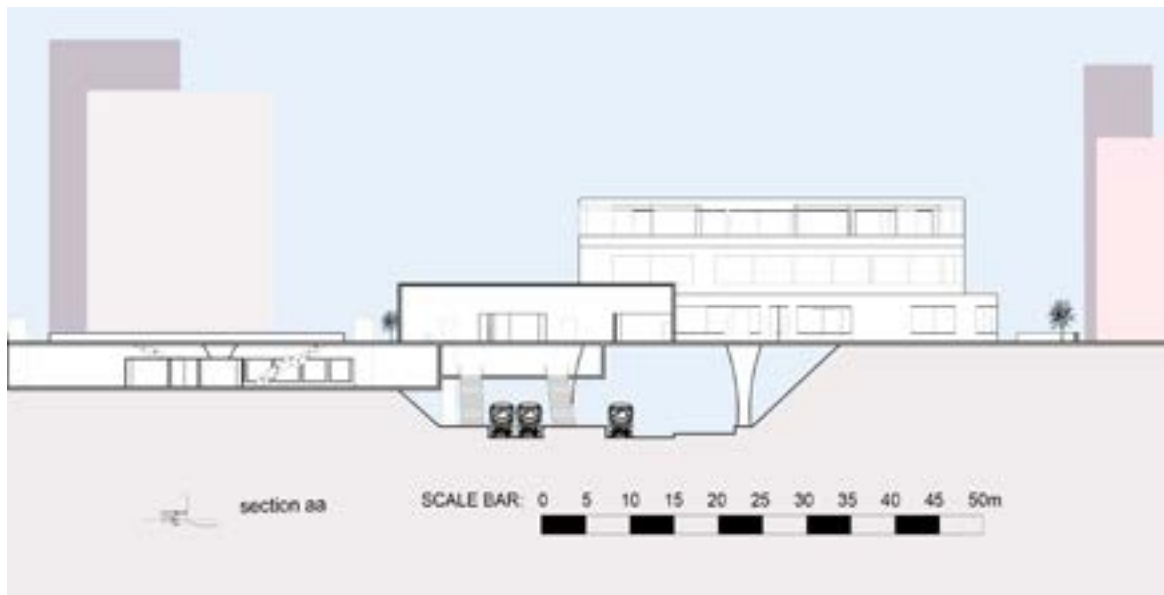


Vertical circulation and Lift integration

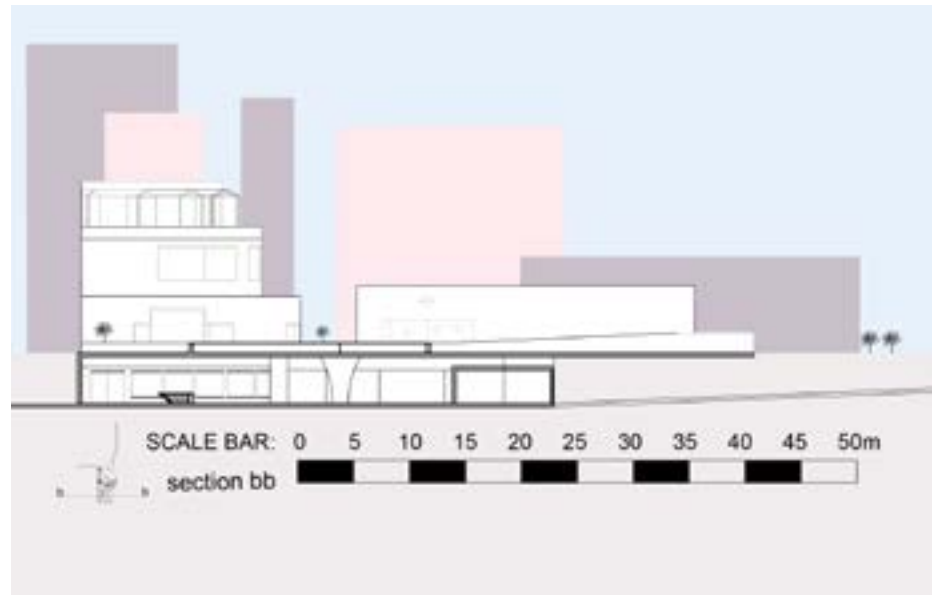




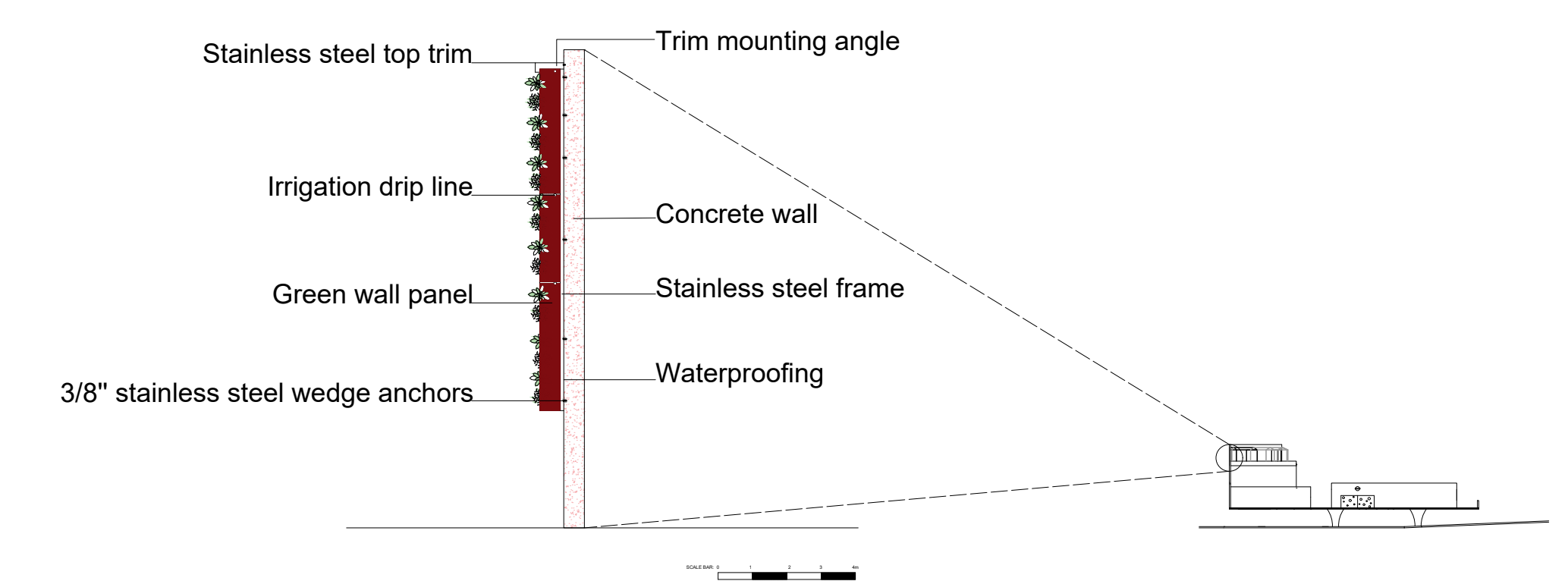
DRAWN 1:500 @ A4



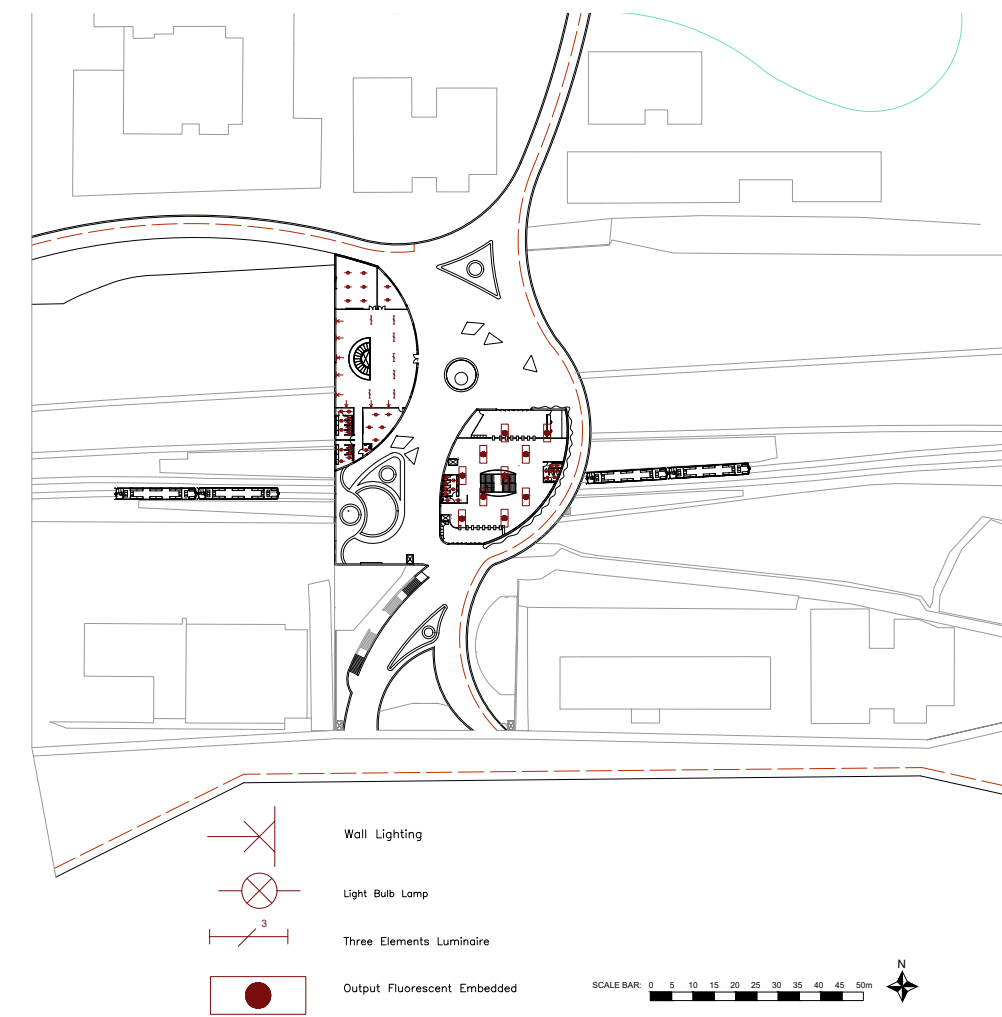
DRAWN 1:500 @ A4



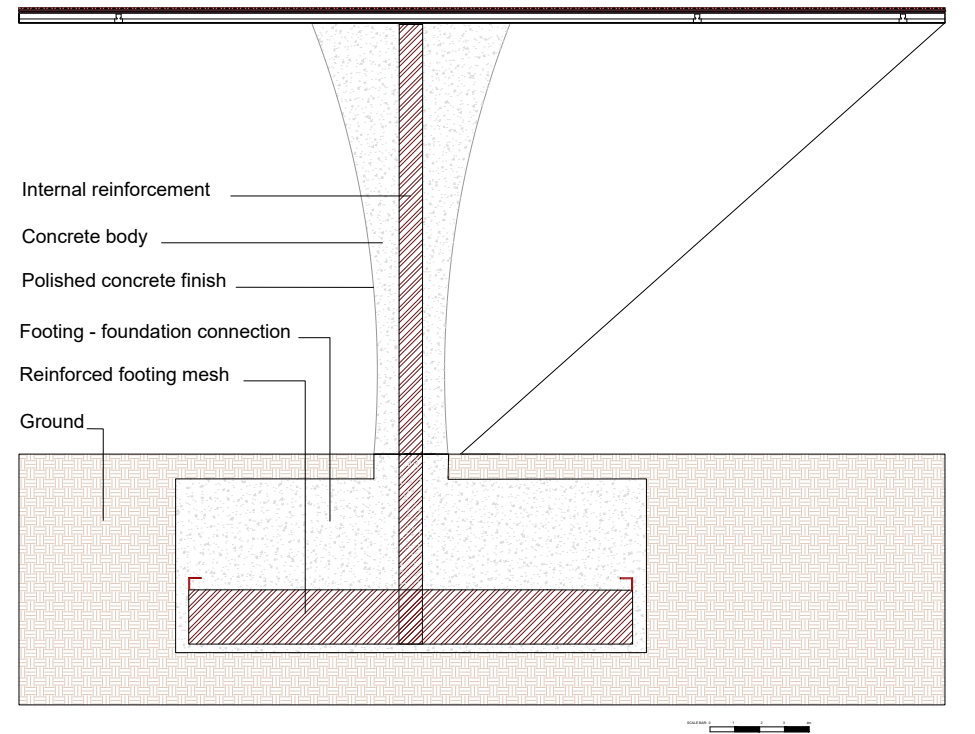
DRAWN 1:500 @ A4



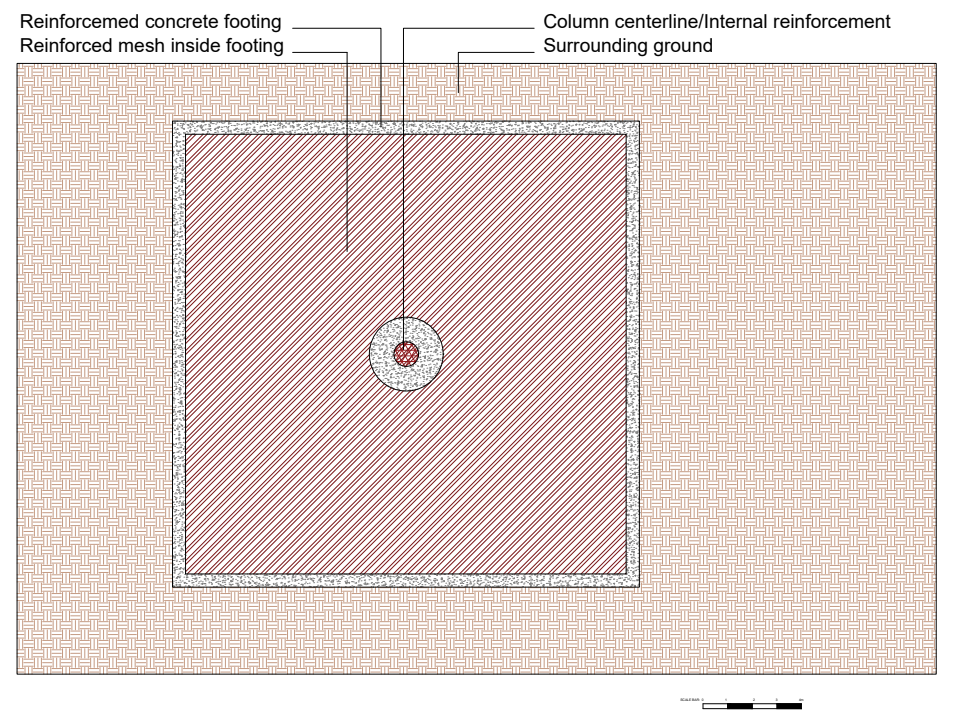
DRAWN AT 1:20 @ A0



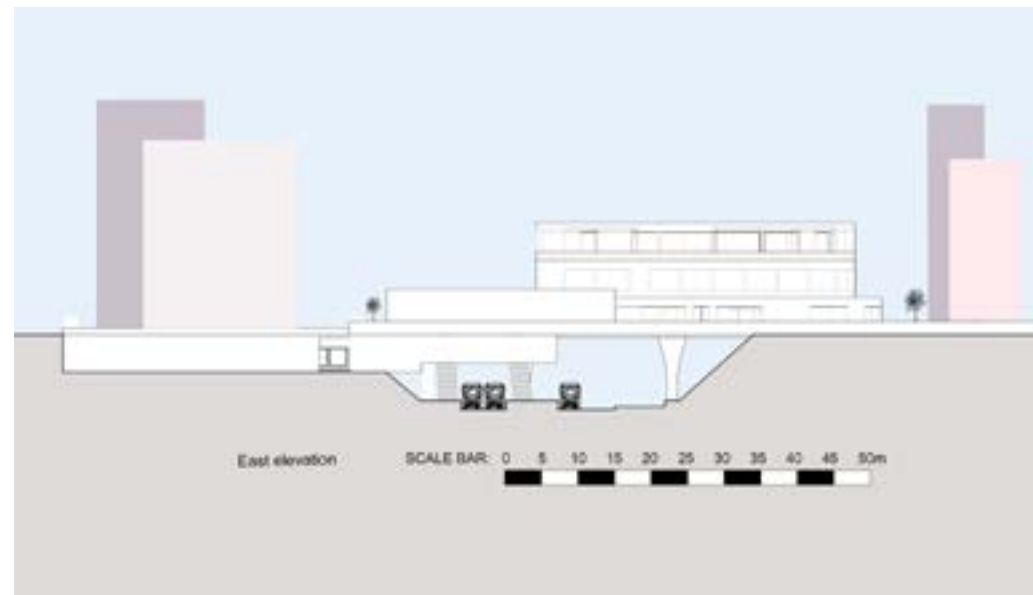
DRAWN AT 1:500 @ A1



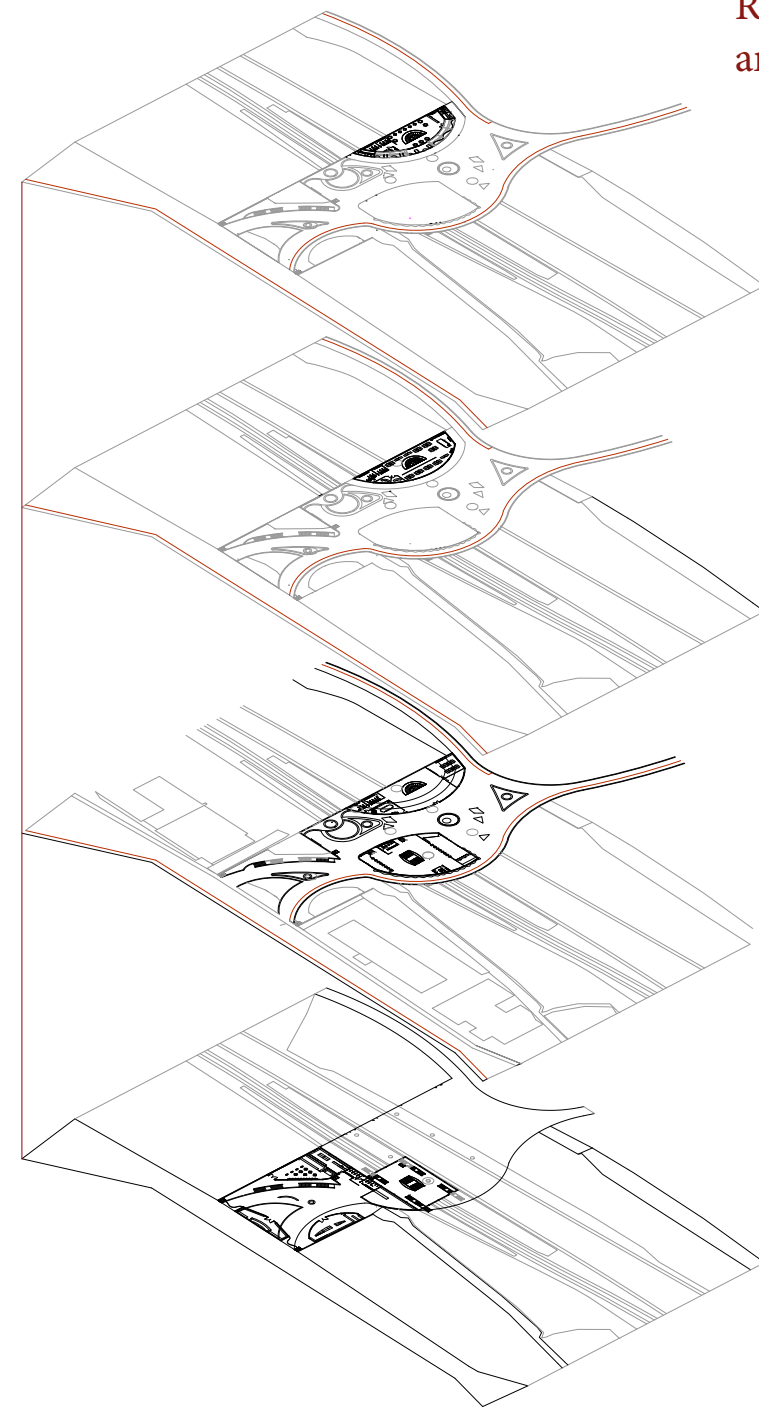
DRAWN AT 1:20 @ A0



DRAWN AT 1:20 @ A0



DRAWN AT 1:500 @A4



Rooftop restaurant and terrace

Co-working offices

Station
Green and Social outdoor areas
Workshops and Gallery

Under Bridge commercial area:
Cafe
Pharmacy
Florist
Convenience store
Bike repair hub

AXONOMETRIC



Section



Outdoor social space



Gallery



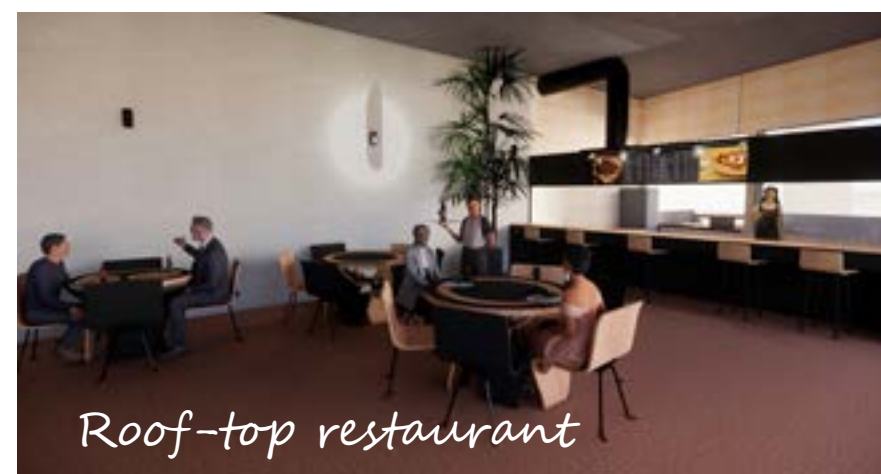
Co-working offices



Underground bin system



Meeting room



Roof-top restaurant



Rooftop terrace



Private booth office



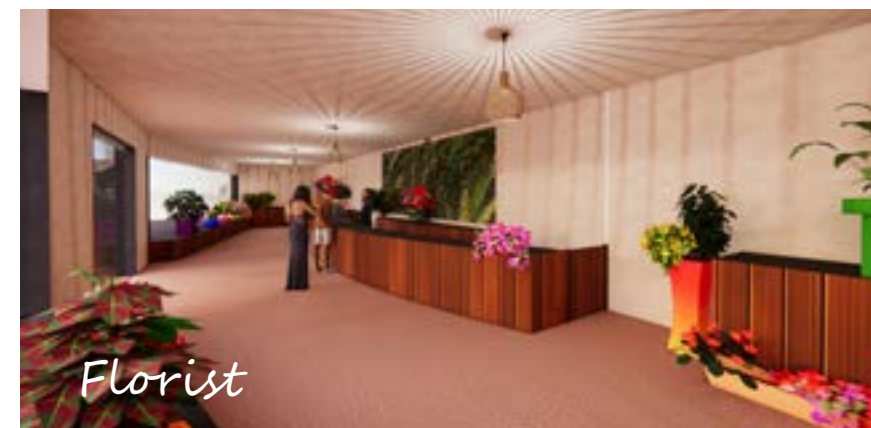
Toilets



Station



Cafe



Florist



Station



Commercial area



Bike repair hub



Pharmacy

Final Reflection

This project is rooted in a commitment to accessibility, equality, and environmental responsibility, values that shaped both its message and execution. I aimed to create a piece of work that is inclusive and considerate, where design supports clear communication and invites meaningful engagement from all.

Sustainability was also a key focus throughout. By using recycled and responsibly sourced materials and making conscious design decisions to reduce waste, the project reflects a belief that creativity can, and should, exist in harmony with the planet.

Beyond the final outcome, this journey has been one of growth. It has challenged me to think critically, create with purpose, and stay grounded in values that matter. I've come to see design not

just as a visual tool, but as a way to open up space, for dialogue, for impact, and for positive change. This project marks a meaningful point in that journey, and I carry its lessons forward with me.

https://www.youtube.com/watch?v=eH_yRcrZlXw

