

THE MALTINGS CYCLE HUB

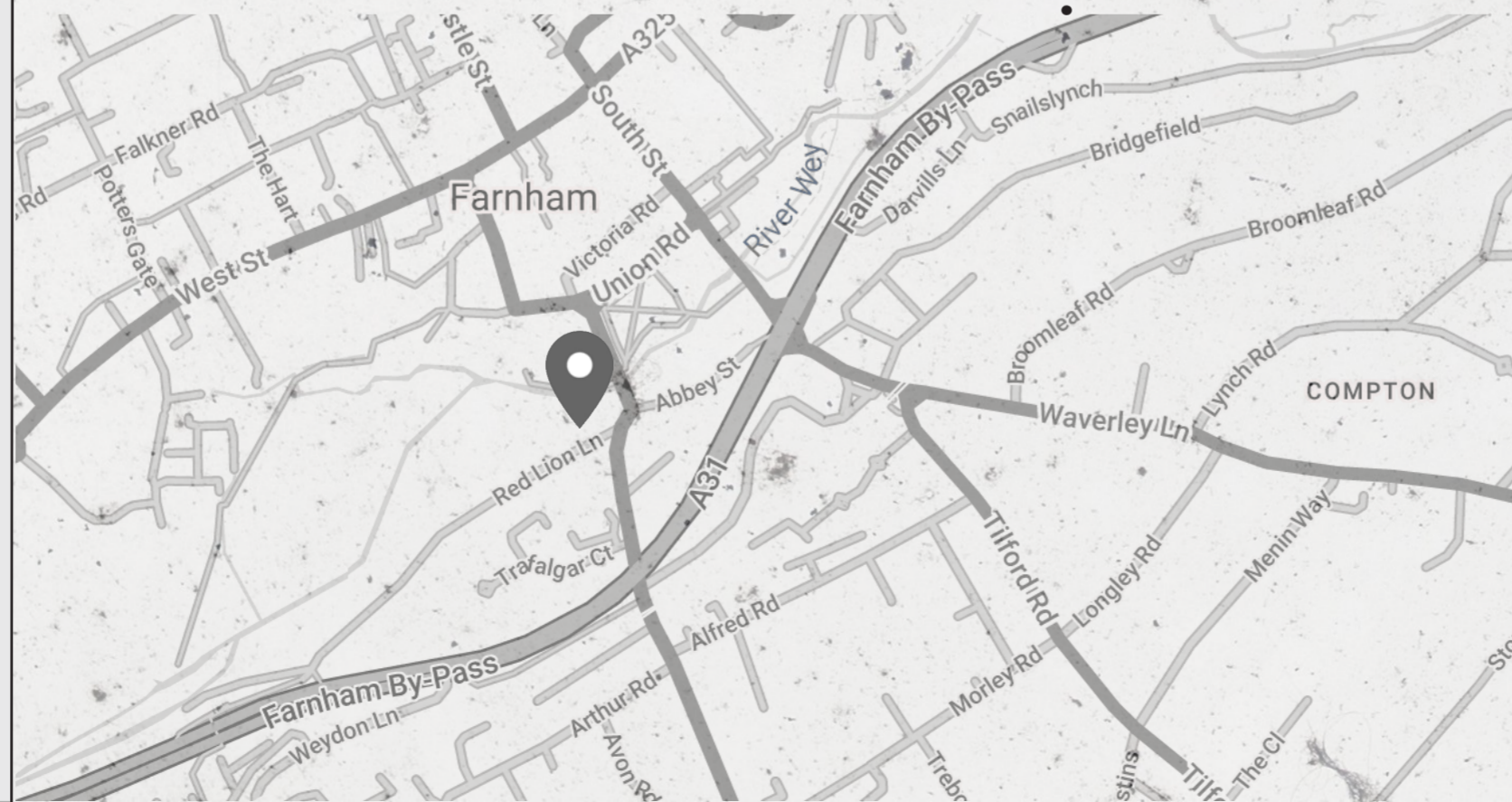
‘A NEXUS TO UNITE THE CREATIVE JOURNEY’

Transforming a creative arts centre into a hub for health, connecting users by encouraging cyclist’s to cycle into Farnham town to meet in a creative space and inspire healthy living.

A concept inspired by initially looking at ways creative spaces could be connected. The River Wey connects multiple sites all the way up to the River Thames.

However to create a network physically it was important to see what the area of Farnham was lacking and how these places could be connected, even indirectly.

Surrey being a major cycling county, there is a huge gap in the market for a space for cyclists coming into Farnham



“Our ambition in leading the ‘house’ network of 180 arts centres and theatres is to ensure that the southeast of England thrives as a set of creative communities.”

“Contribute to the town’s quality of life.”



“Ambition to develop reciprocity and exchange between artists and producers across the world.”



FUNCTIONS & ACTIVITIES

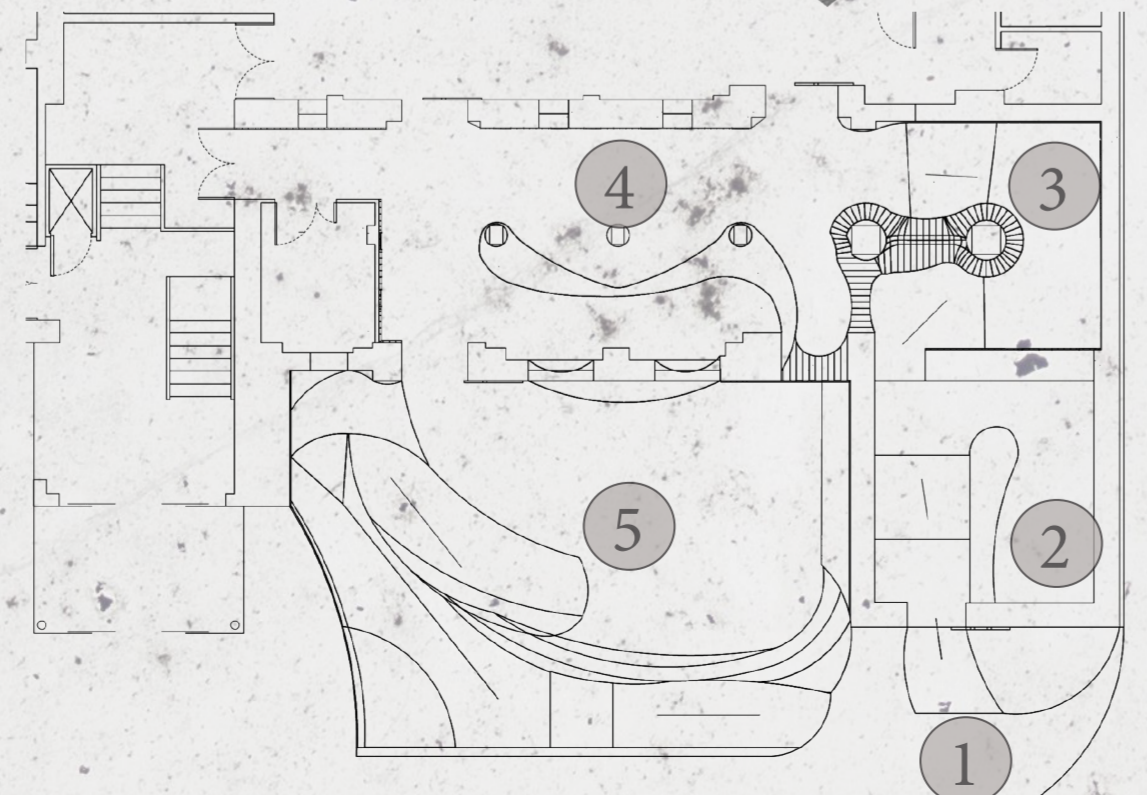
In Farnham cyclists don't really have a space to stop, tailored just for them. The idea is to have a space cyclists can cycle into, have repairs if needed, store their bikes, have a coffee and some food, rest, meet up with others and just be a hub for that type of user. Also locals/tourists to have the opportunity to hire electric scooters and bicycles to explore Farnham with as shown in the below entrance area.

CYCLE THRU & HIRE

WALKWAY & STAIRS
 USER CAN HIRE ELECTRIC BICYCLES OR SCOOTERS
 ENTRANCE TO CYCLE THRU
 EXIT

Here the space has been sectioned into different areas to explain the interior and exterior's specific functions and activities.

- 1 BEGINNING OF CYCLE THRU & HIRE ZONE
- 2 CYCLE THRU, TO GO BAR & REPAIR STATION
- 3 DISMOUNT ZONE & SEATING
- 4 BAR AND COLLECTION ZONE
- 5 COURTYARD, OUTDOOR BAR, SEATING NOOKS & EXIT



SHRUBS & SMALL TREES

1

BICYCLE REPAIR AREA

RED BRICK TO SHOW SOME OF THE BUILDINGS HISTORY

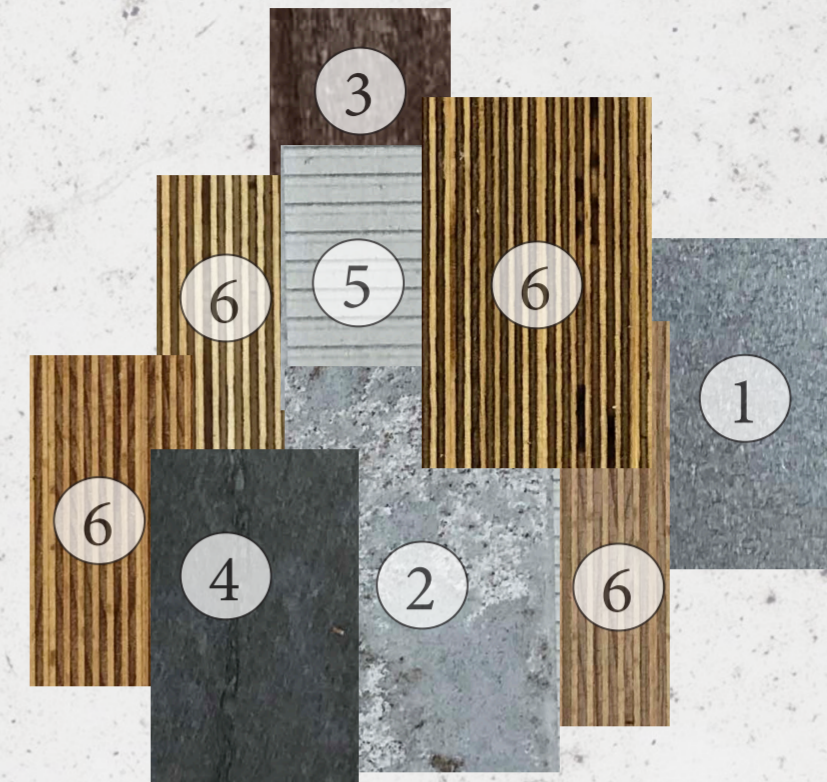
TO GO BAR/ORDER

TUBULAR CEILING LIGHTS

CYCLE THRU & REPAIRS

MATERIALS

- 1 STONE
- 2 CONCRETE
- 3 MAHOGANY VENEER
- 4 DARK STONE
- 5 STEEL
- 6 BIRCH - VARIOUS TYPES



WOODEN SLATS

The materials used are predominately timber, concrete and stone. This is to reflect the raw materials of the outdoors and as the user moves through the space to still feel like their journey is continuing indoors.

DISMOUNT & STORE

3



CONCRETE RAMP

The user circulation is one way, from the far top entrance where the user can order, inside to store or pass by the bar even, and choice to sit inside or outside. The will bar also accommodating for both areas.

It would be able to attract quite a few ages groups, the experience will be unique as the user can order as the enter at the 'cycle thru' and continue through to collect or order later on, giving the user a sense of control and adventure.

There are multiple outdoor seating pods or seating around the ramp where the user exits the space for the users to sit and relax, maybe while they are getting a puncture repaired or having a coffee made.

This would be a good way for money to be made and attract a different type of user to the Farnham Maltings.



**DISMOUNT
&
STORE**

3

VERTICAL
BICYCLE
STORAGE

LED SIGNAGE

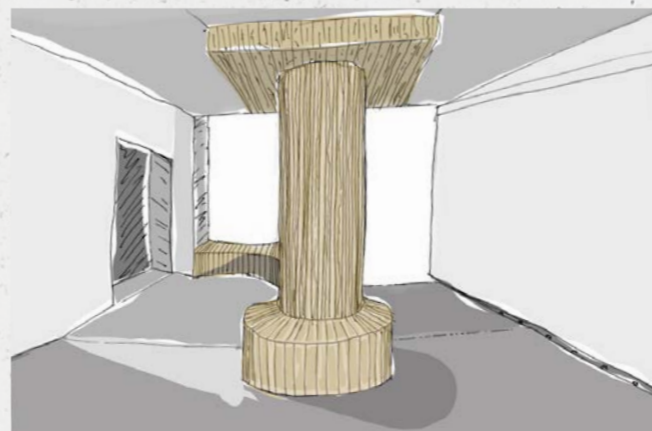
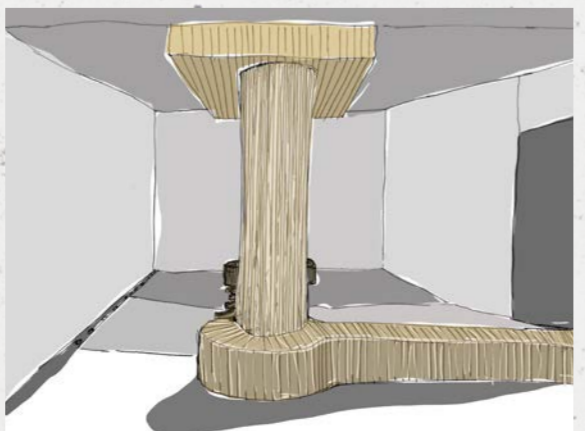
VERTICAL
BICYCLE
STORAGE

LANDING
&
RAMP

This area is where the user can either continue cycling through the space or dismount and store their bicycle vertically in between timber slats supported by wooden pegs to hook between the spokes of the wheels. This is a simple yet effective way to store items upright and out of the way in a narrow space such as this.

The ceiling is lowered around the two pillars to create depth and intrigue the user as they move around the corner. The main eye catcher is the white LED lighting oozing from within the lowered ceiling and the same from the signage dotted along the walls.

The pillars and the rounded shapes of the seating is inspired and subtly reflects the shape of a bicycle on plan.



In this area is the collection zone where users can collect or order from the bar area. Various items such as coffees, teas, snacks, light lunches, healthier options for the healthy clientele it may attract.

Lighting in this area are made up of bicycle wheels and LED strips to reflect the activity in the interior.

BICYCLE STORAGE AND DISMOUNT AREA

4

COLLECTION ZONE

4



BICYCLE WHEEL CEILING LIGHTS

LED SIGNAGE

WOODEN SLATS COLUMNS

COLLECTION AREA



BACK BAR & OUTDOOR BAR

CONCRETE FLOOR

OUTDOOR BAR

BIKE STORAGE FOR OUTDOOR USERS

STAIRS/SEATING

CIRCULAR SEATING NOOKS

BAR COLLECTION AREA

Once the user is finished at the bar, the user has the option to continue straight into the rest of the Farnham Maltings and get involved in arts, crafts, theatre and so forth. Or they can turn left around the bar into the courtyard space which has an outdoor bar which backs the indoor bar. They can sit in round seating nooks, or even on the stairs bordering the space. Here there is further bicycle storage is needed and the user will exit up the ramp to leave the Cycle Hub.

COURTYARD ZONE

5

