

# Broken Stones

Wey-Side Studios



With catastrophic ocean pollution, as a result of urbanised litter habits, Wey-Side Studios is a proposed interactive sustainable jewellery workshop, developed within the small craft town of Farnham, inspired by the South Coast and outdoor coastal activities such as Mudlarking and Beachcombing. Users apart of the workshop go on an external 'Pub Crawl' around the town to collect used brewery bottles to upcycle into beautiful hand-crafted pieces of treasure. Users can showcase their new skills to the public, through an open retail space and when completed to take their creations home, or sell them within the studios to other customers.

Alongside an extended educational exhibition, visitors can witness real time making to give them an insight into the positive impacts the workshop has on the environment through hand-crafted process, hopefully transitioning into active individuals, contributing to an eco-friendlier society.

The Fracture:

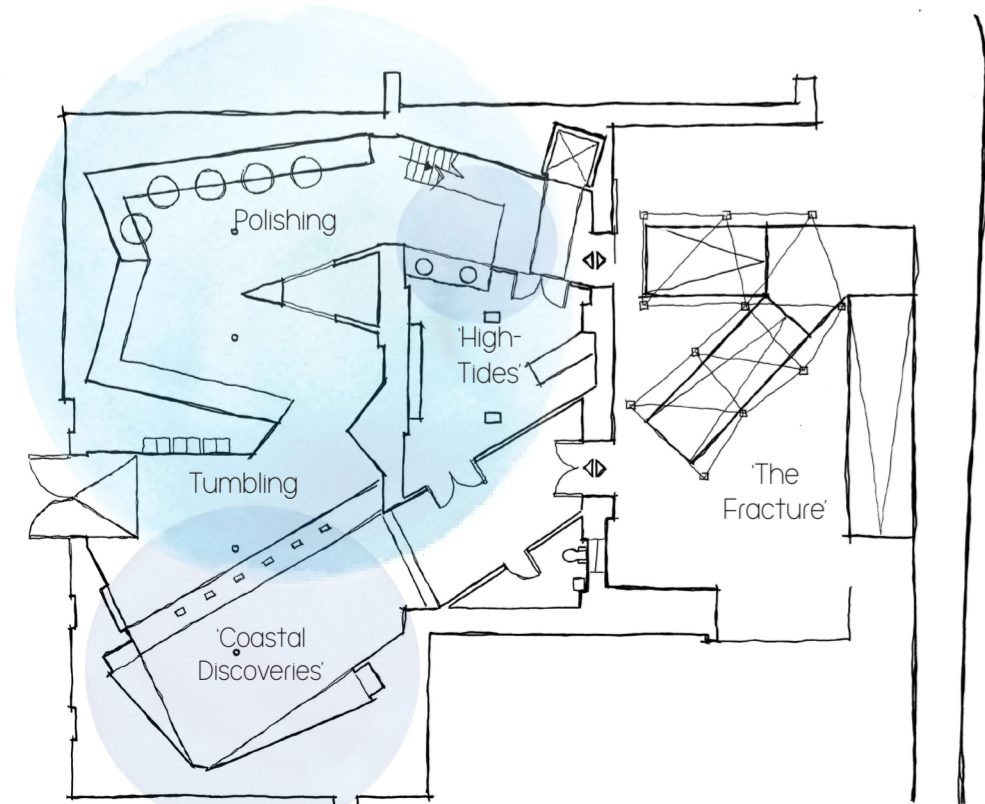


This shows the approach of different individuals or groups and their varying outlooks. The fracture between active and passive people and bringing the community together within the studio to make a change.



'Active' Individuals apart of varying user groups

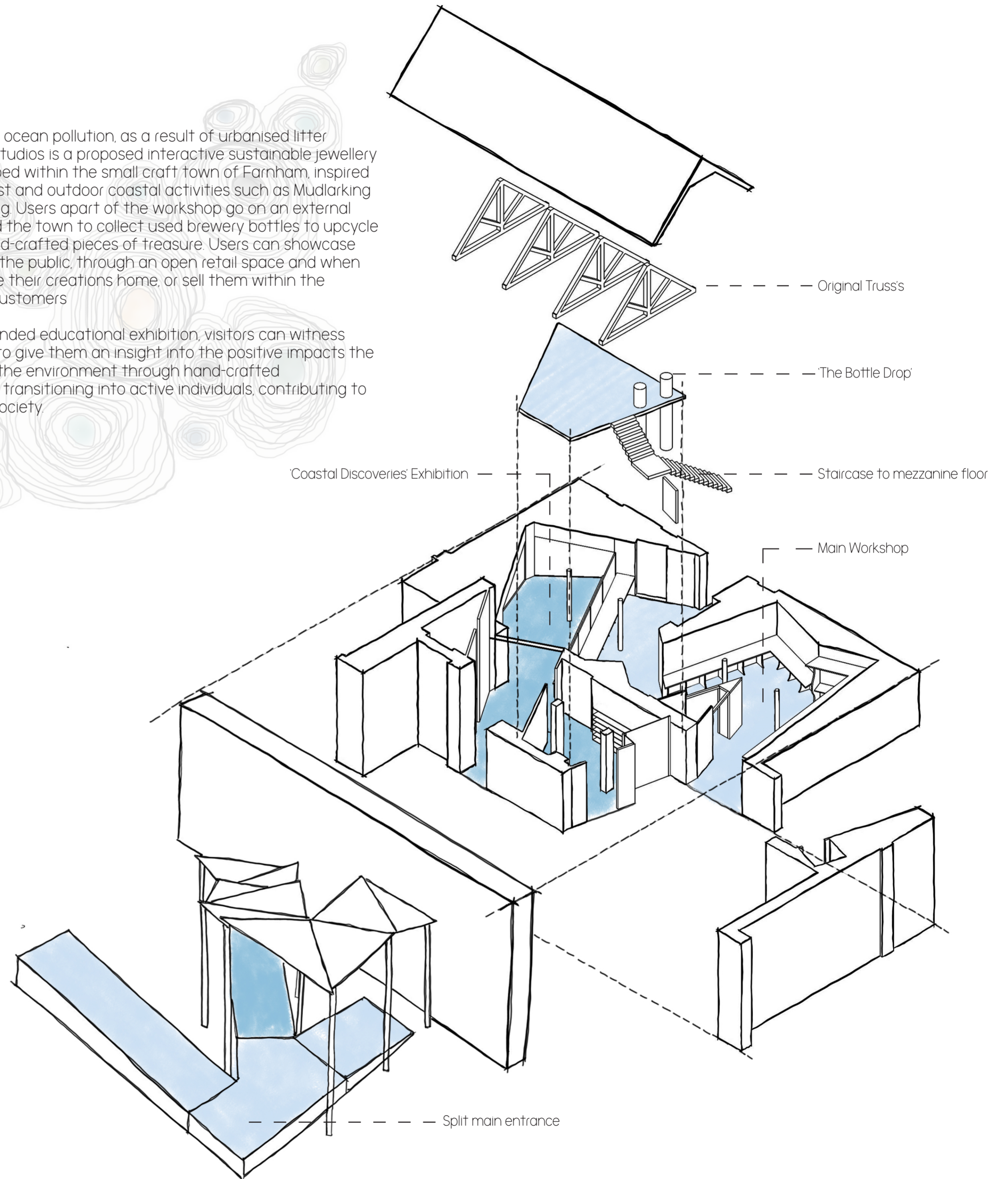
- Environmentalists
- Creative/Craft People
- Handmade Collectors
- Coastal Lovers



Ground Floor Plan



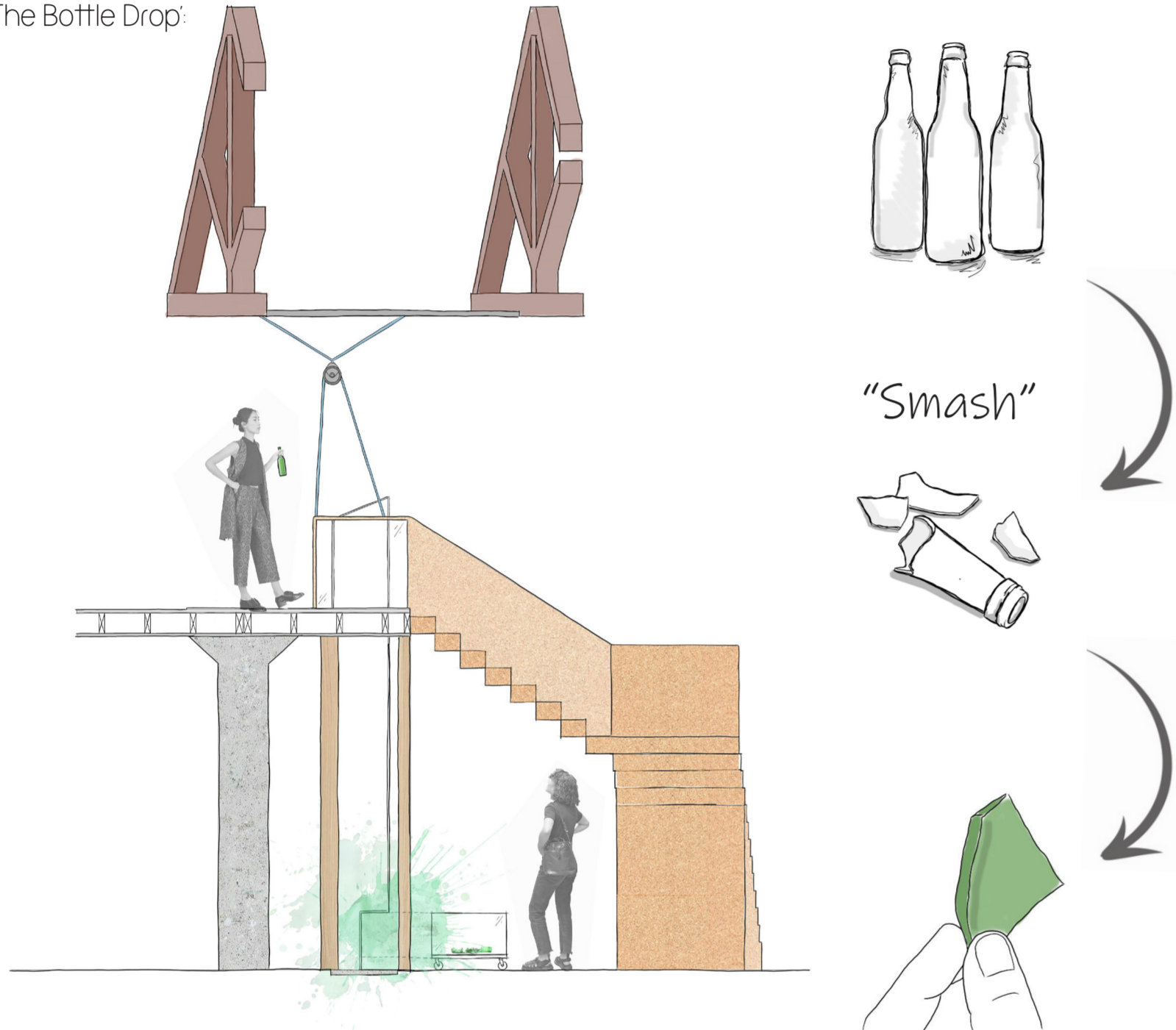
First Floor Plan



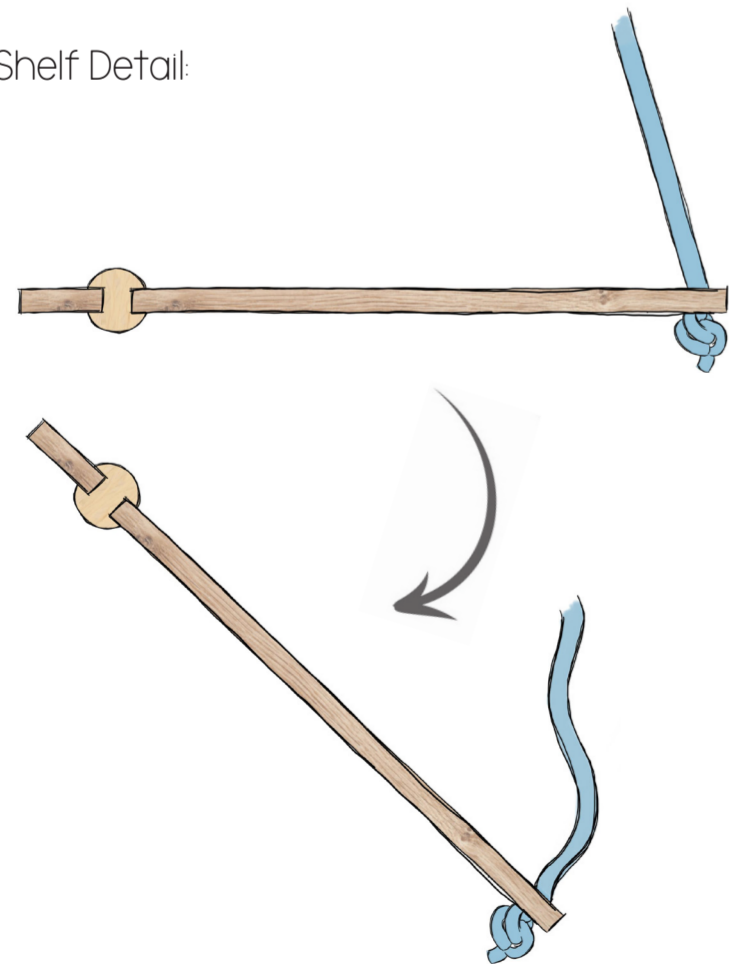
# Broken Stones

Wey-Side Studios

The Bottle Drop:



Collapsing Shelf Detail:



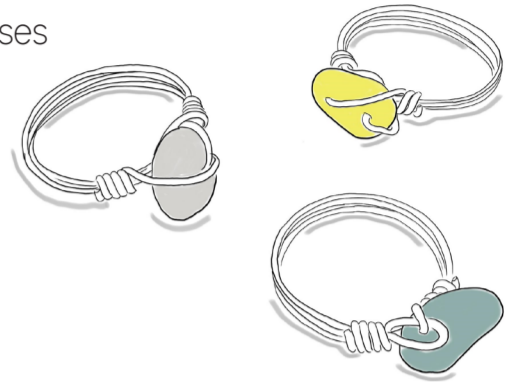
The 'Bottle Drop' is a theatrical area for the breakdown of resources found from the 'Pub Crawl' expedition or collected from the 'Bottle Bank' on the Ground floor. Through the element of surprise and gravity the bottles are smashed from the first floor, below into more usable pieces, before being manipulated in the workshop.

The gift shop directly below acts as a viewfinder for visitors to witness the explosion of the bottles as they fragment, starting the process before watching the hand crafting. As well as being able to purchase the handmade jewelry on display.

High-Tides Gift Shop:



Jewelry Cases



Bottle Bank



# Broken Stones

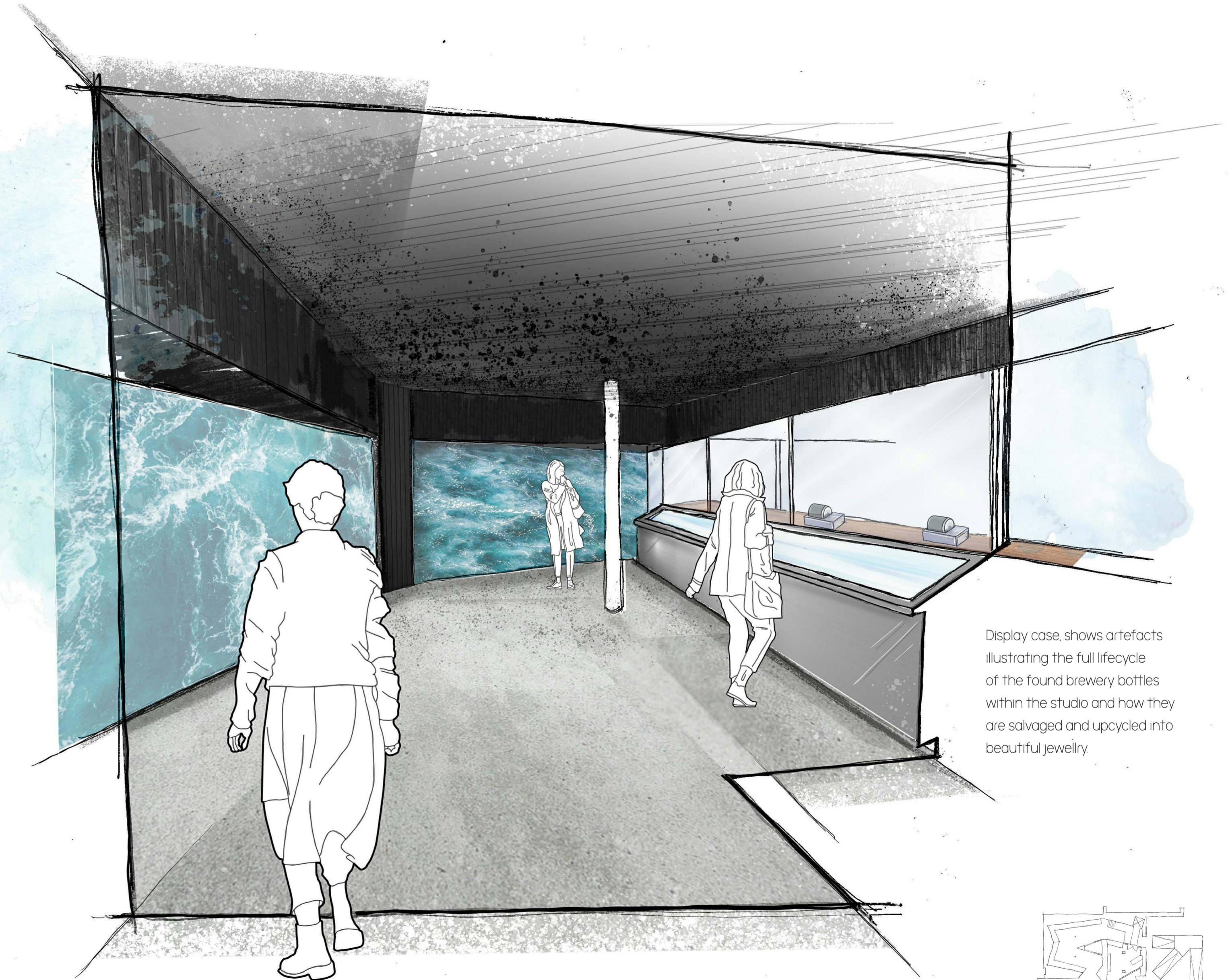
Wey-Side Studios

## 'Coastal Discoveries' Exhibition

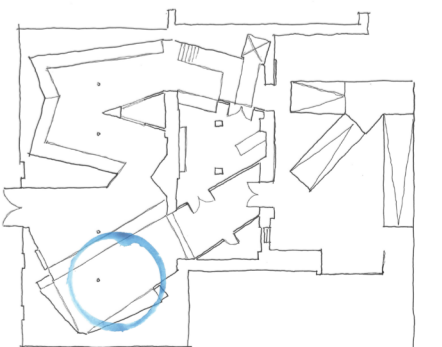
This exhibition is accessible for visitors, in connection to the High-Tides Gift Shop. This immersive space, identifies the current climate issues, evolved around the ocean and making them aware of how its effecting water within urban environments, such as the River-Wey.

It also helps to educate people on the positive impacts the workshop is having through its creative processes with the reuse of found material. With a clear view into the early stages of the workshop after shattering the bottles. People are enabled to see the making live and hopefully this will give them a realisation of the simplicity of saving the planet through having fun.

## 'Coastal Discoveries' Entrance



Display case, shows artefacts illustrating the full lifecycle of the found brewery bottles within the studio and how they are salvaged and upcycled into beautiful jewelry.

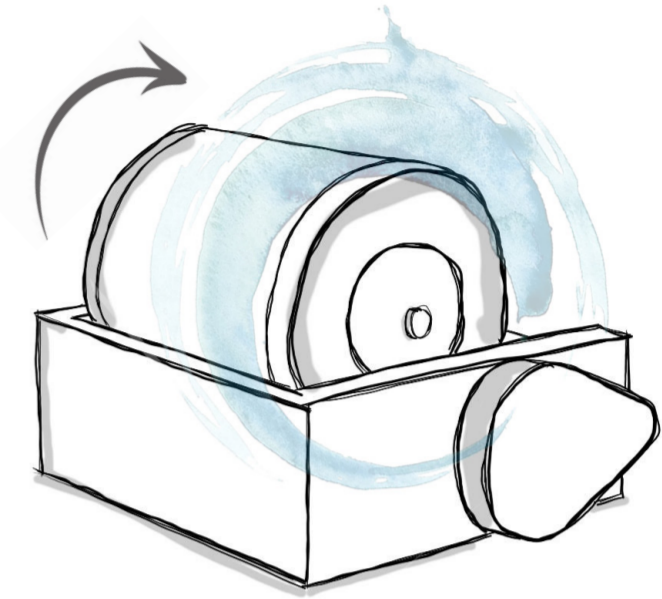


# Broken Stones

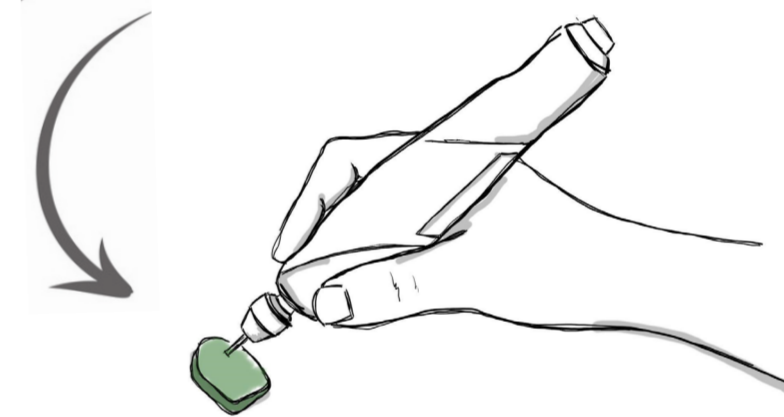
Wey-Side Studios



"Swish"



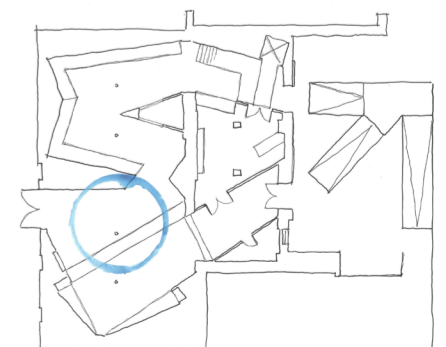
Drilling



The drilling of the glass is carried out before performing finishes, using other materials in a separate area, to ensure safety and reuse of any broken pieces and allow inspection of any sharp edges that can be rounded off.

## Workshop - Tumbling

The Tumbling area is directly reflected from the exhibition space. On the other side of the glass partition, how the sharp shards of glass are smoothed into smaller, safer pieces. Each individual tumbles their own materials before heading off to drilling and polishing, in order to complete their creations.



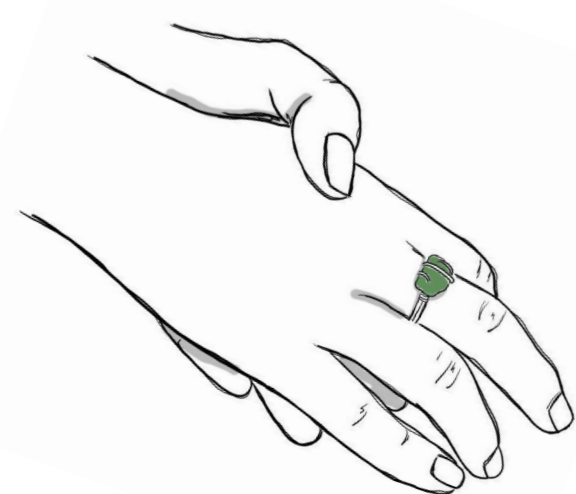
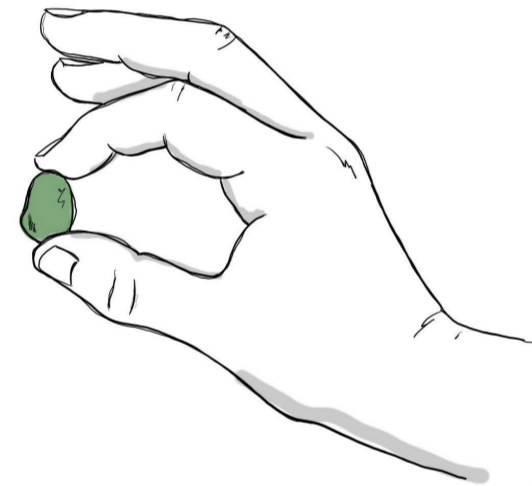
# Broken Stones

Wey-Side Studios

## Workshop - Polishing

This shows the final stages of the hand making process, how the active individuals make their products independently, within their own booth. Giving them a sense of privacy to work, however still able to access help or assistance.

Before choosing to take their hand-made jewelry home or selling it with in the High-Tides' Gift shop.



Individual Making booths

Wire Selection

"Snip"



Wire Off-cut containers

Adjustable Industrial seating

This area tries to enhance its sustainable reputation by collecting scrap or waste material, especially from the selection of malleable wire, in order to be reused for future makers, within the workshop.

