

# PROJECT DESCRIPTION

The Mycelium Exhibition Lab project proposes the future of sustainable leather lab production interiors along with the use of developments of AR (Augmented Reality ) to bring the local community artists and the public together to learn more about the artwork and mycelium leather uses. The design of Farmiloe building interiors aims to bring in the history of the textile past of Bartholomew Fair showcasing key aspects of its rich history incorporated into the interiors of the building. Immersive AR- powered exhibition spaces allow the artist to exhibit their work and promote local textile designers and give a space for workshop and prototyping to showcase futuristic textile ideas to the community of Clerkenwell. AR sensory exhibition space on the 4th floor allows evolving hybrid creative companies such as architecture and interior design companies to exhibit their projects to the public where they can learn about future developments taking place in Clerkenwell and London.

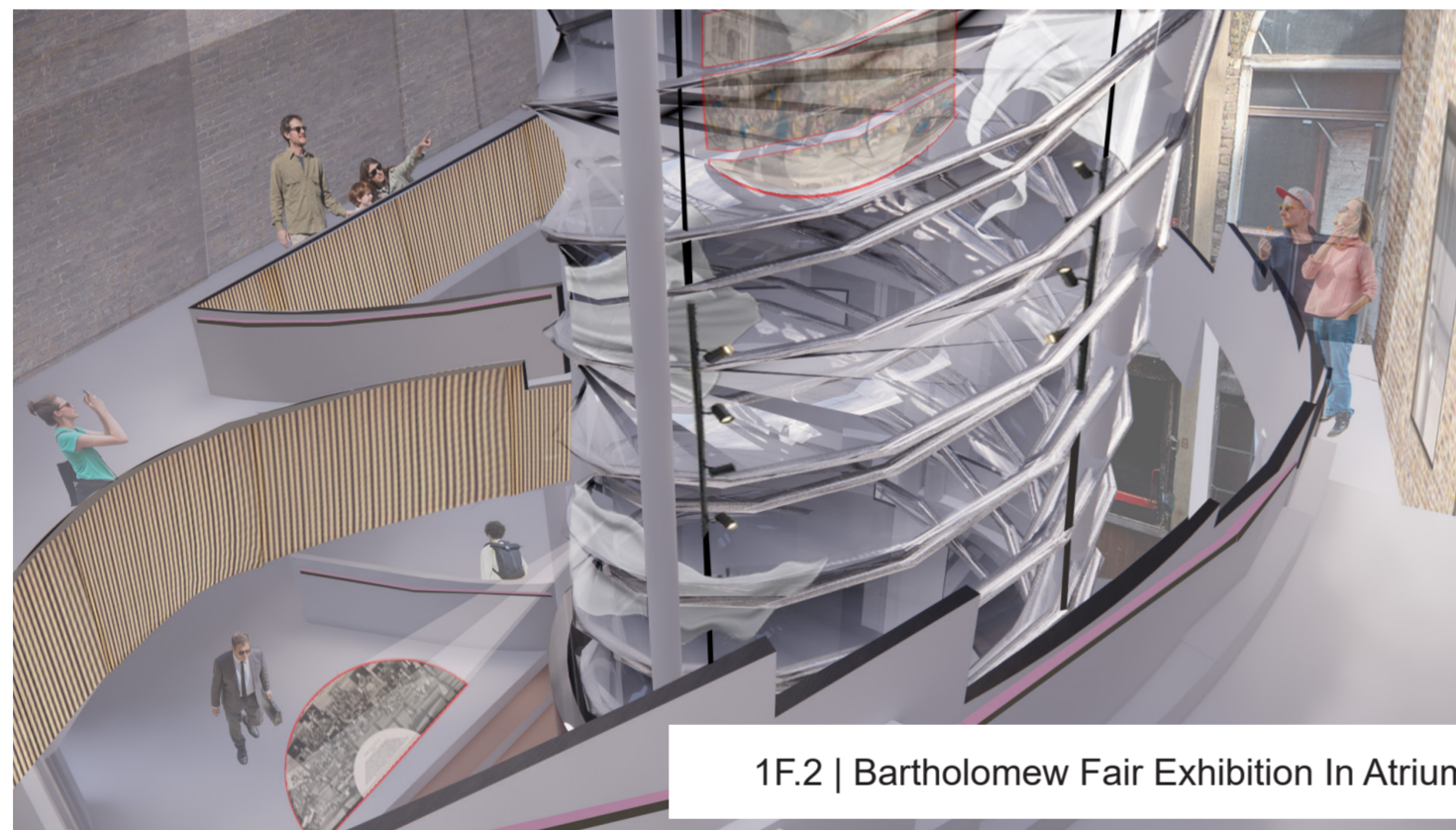
The fair dates back to the 1133 where Henry I issued a licence for it to Rahere to be an former court entertainer. The fair was held on the open space of Smithfield which was outside the city walls

Bartholomew's fair started in the 12th century which was the last in the September 3rd 1855- held for 4 days

The fair would start on the eve of feast day at St Bartholomew in August. It became the country's largest cloth fair. It was controlled by City of London from 1604 and opened every year

The fair was turned into a more of a carnival space which included : puppet- shows, fire-eaters, performing artists, caged tigers and many more.

Importance of this Bartholomew fair is that it became a commercial event which was around trade and entertainment. A space which was sourced with a variety of foods, gathering booth spaces, with textile an fabric coming from all over the world here.



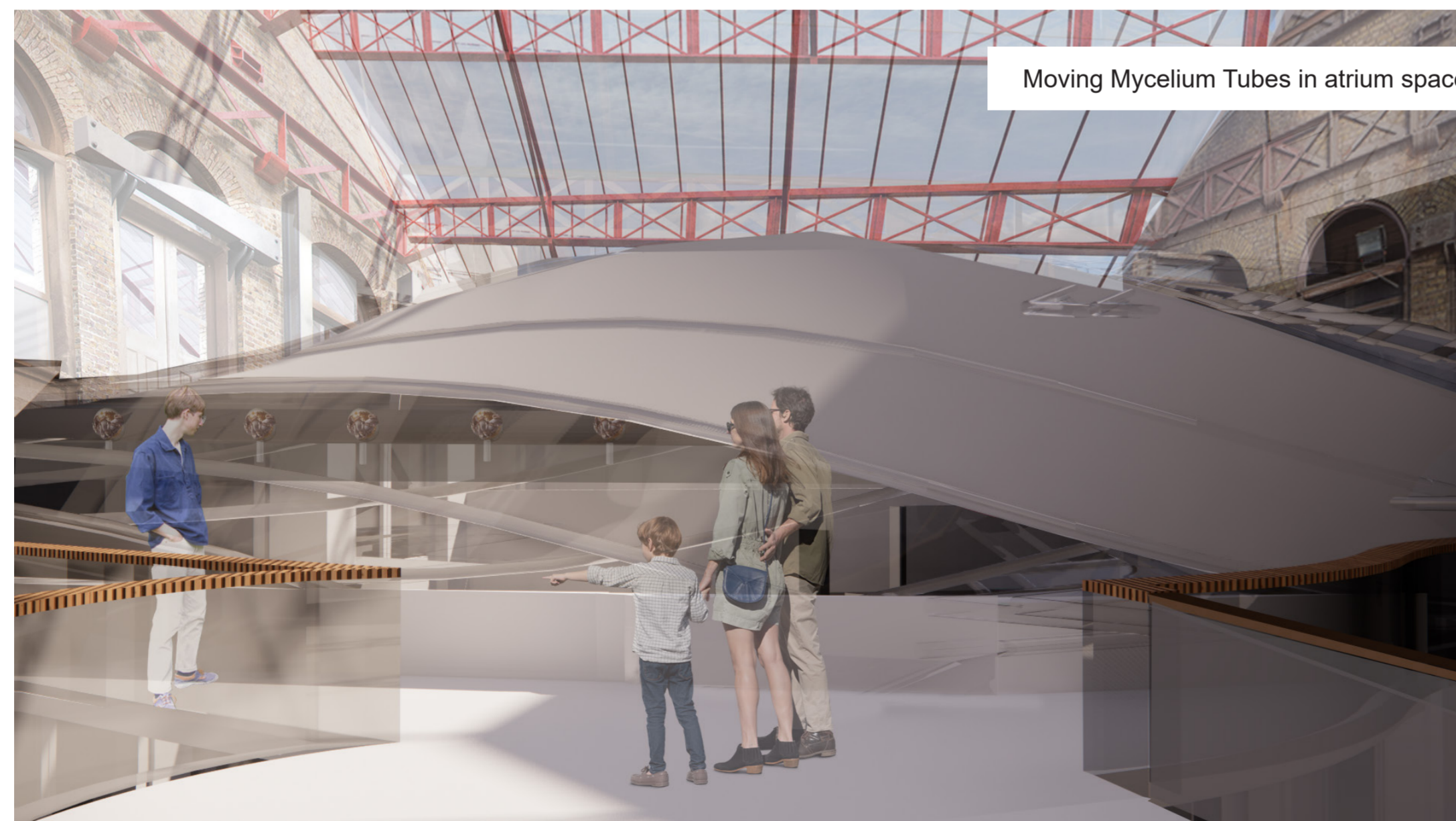
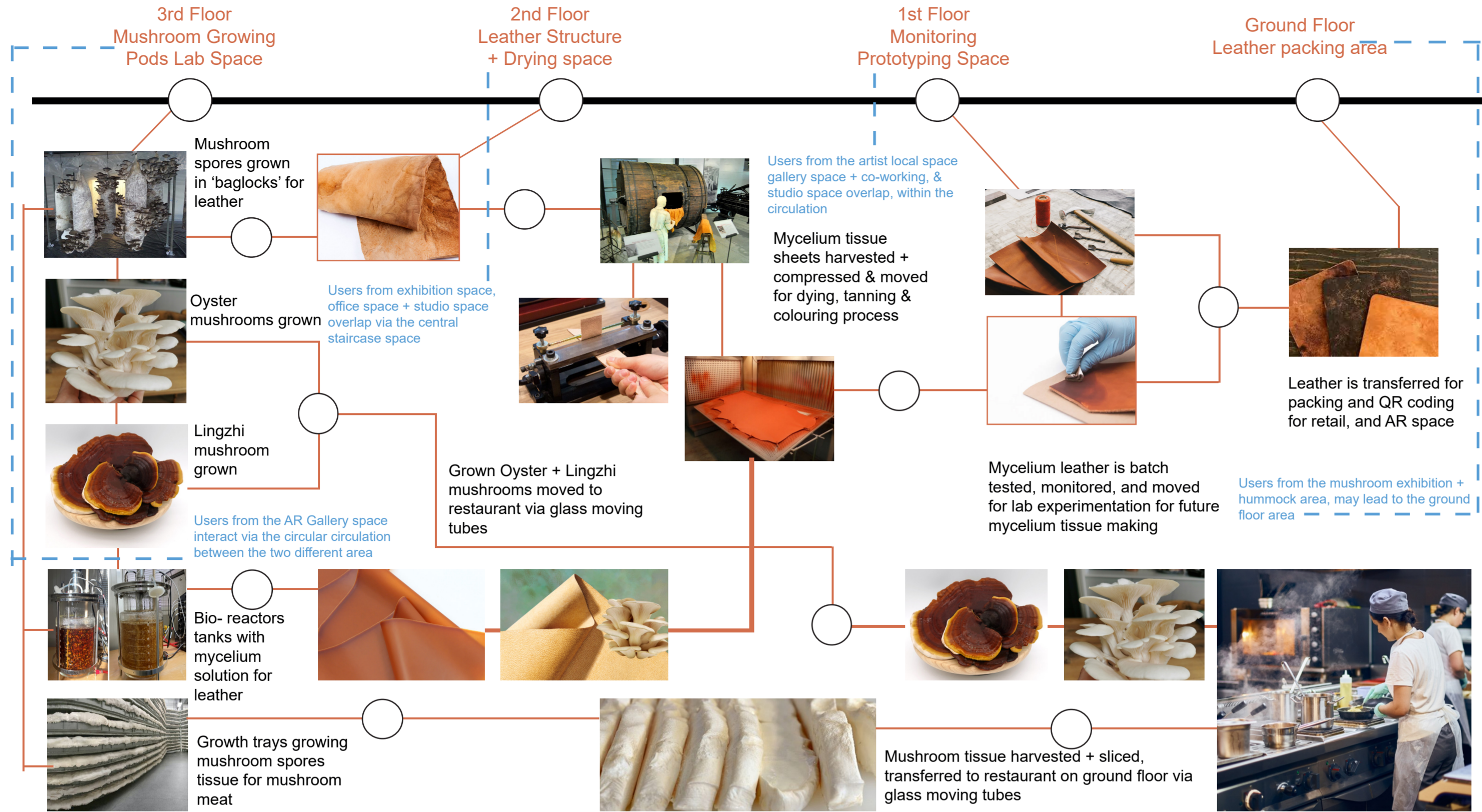
1F.2 | Bartholomew Fair Exhibition In Atrium



Mycelium Leather Production Lab Space

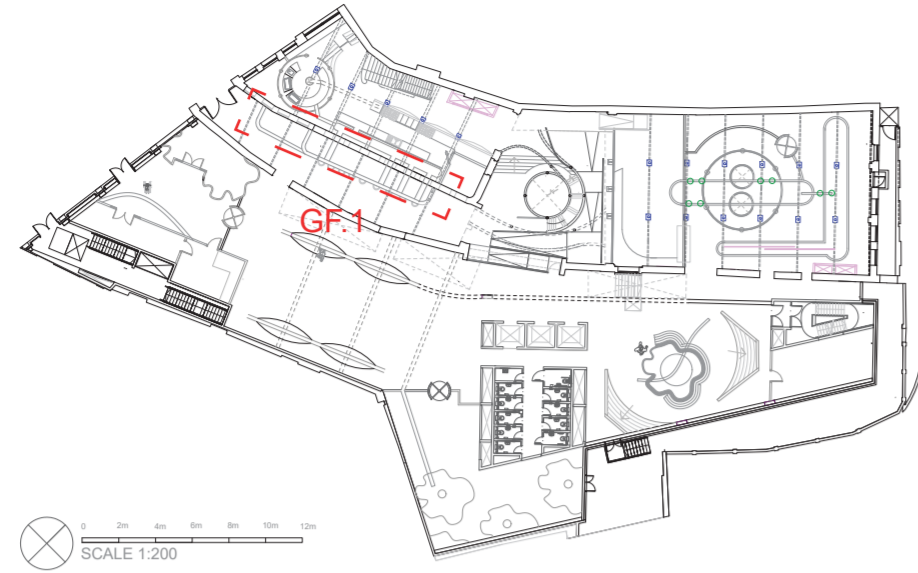
# USERS + PROCESS OF PRODUCTION

## MYCELIUM LEATHER + MUSHROOM MEAT PRODUCTION LINE



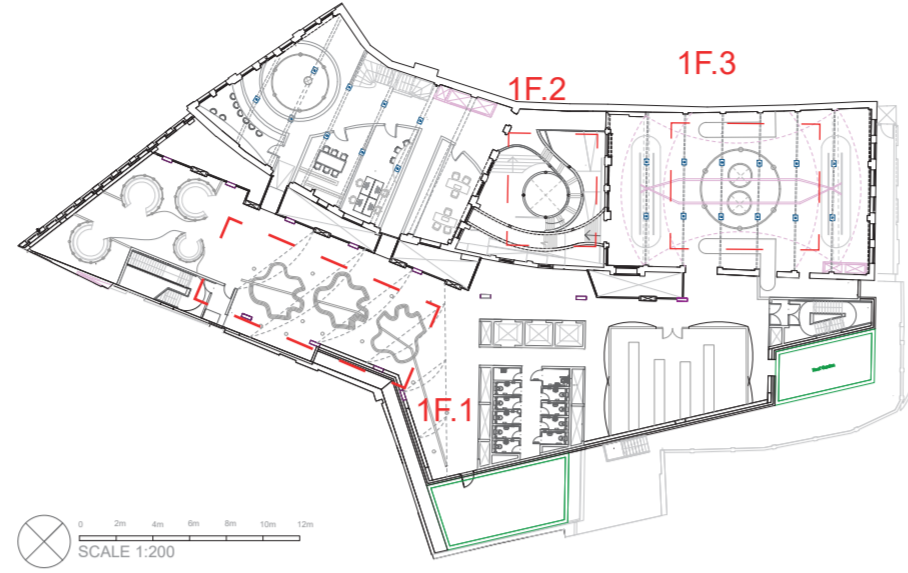
# PROGRAMME + FUNCTIONS

GROUND FLOOR



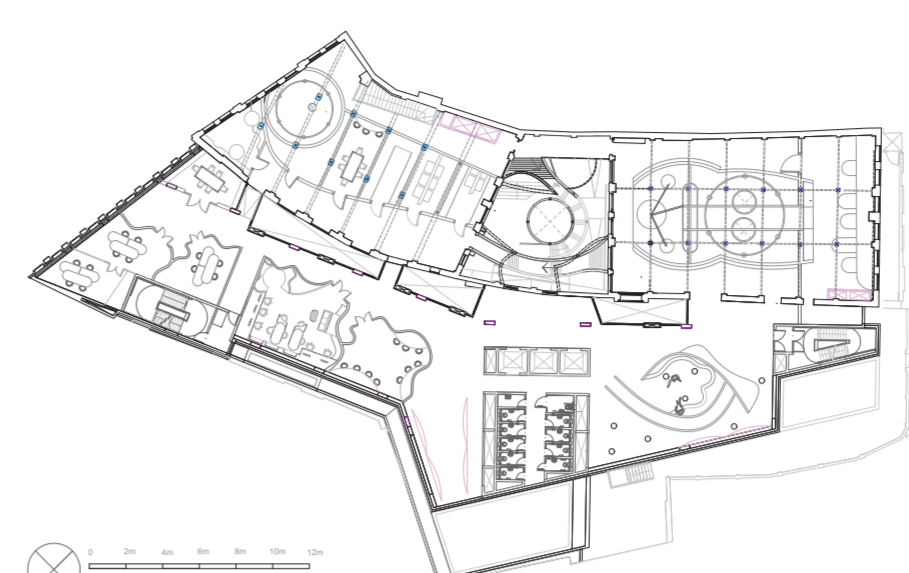
Ground floor has the main entrance spaces, followed by the hummock area, live cooking restaurant and the central atrium exhibition space with the circular staircase for ease of circulation

FIRST FLOOR



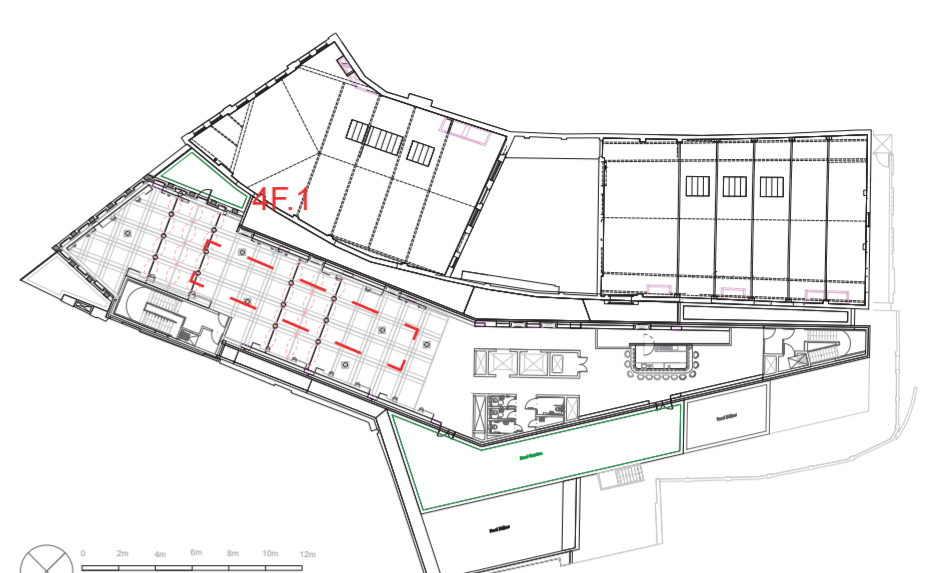
First floor has the co-working spaces, the studio spaces along with the immersive exhibition spaces which lead onto the leather production for monitoring and prototyping area

SECOND FLOOR

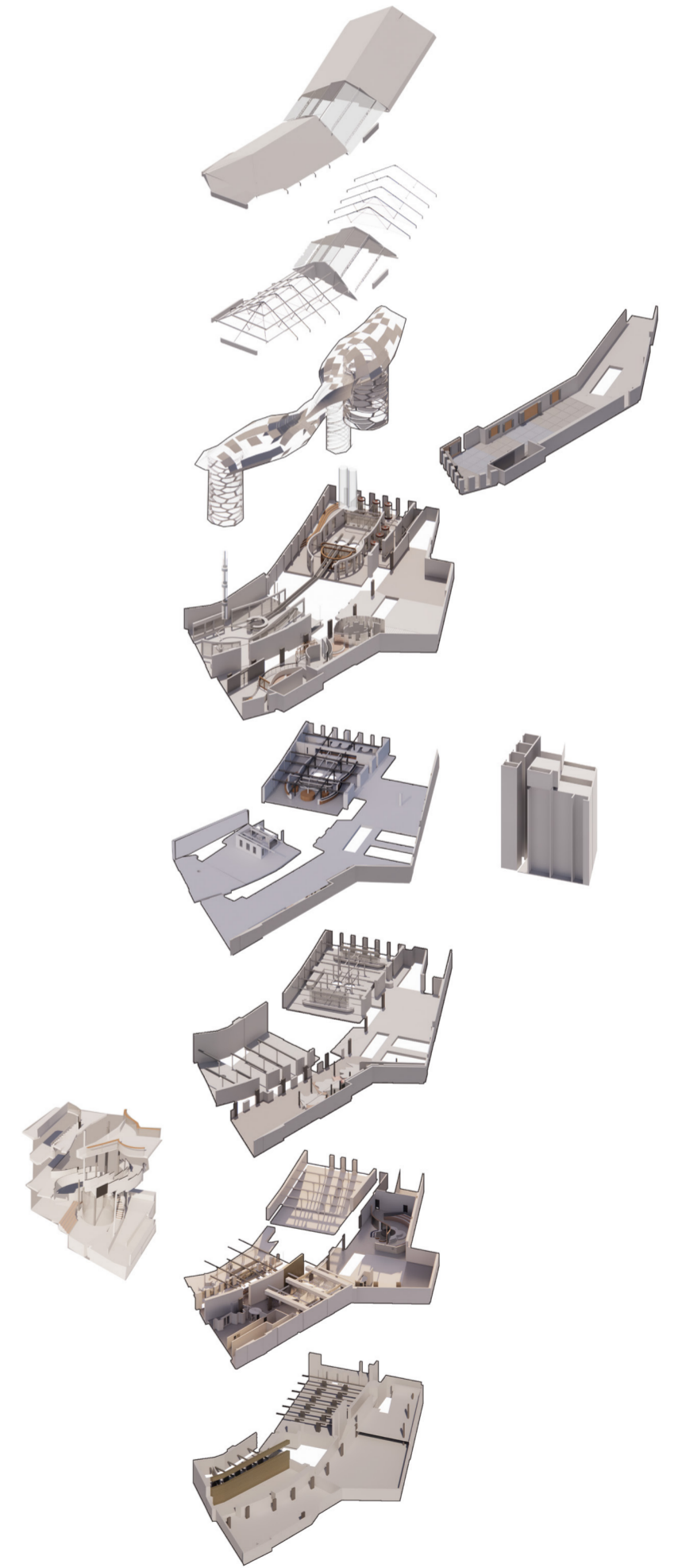
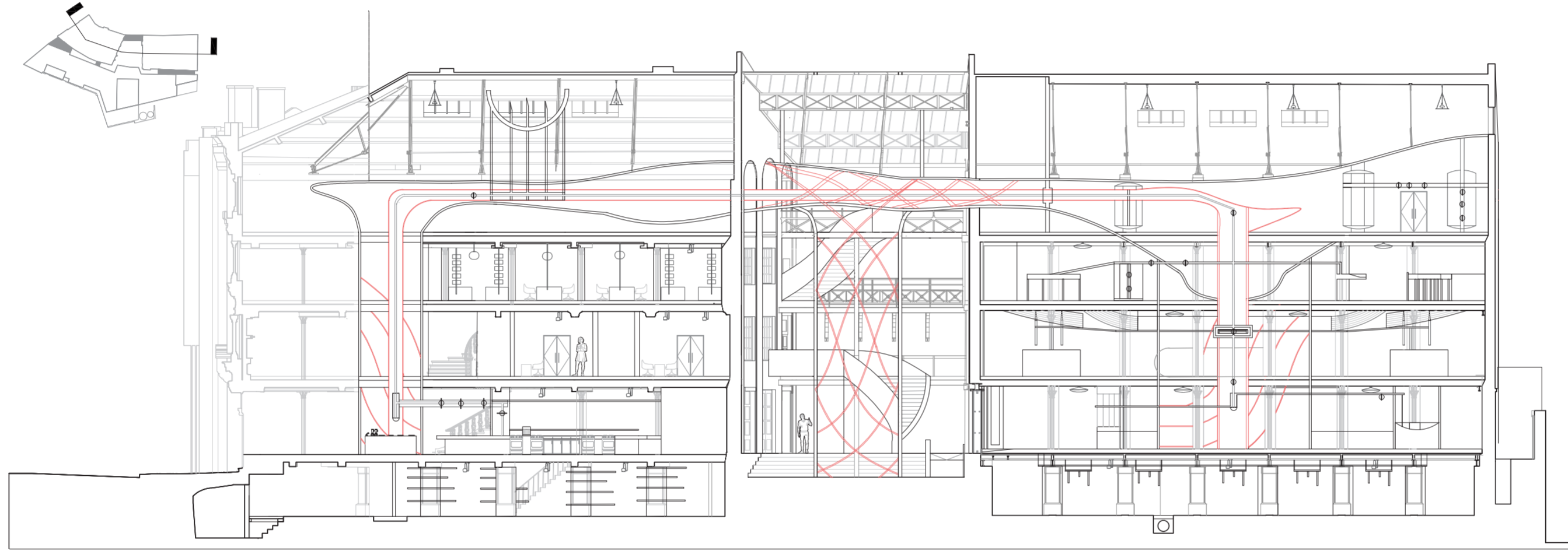


Second floor has the private studio spaces along with the office spaces for the leather seller's company and exhibition spaces

FOURTH FLOOR



Fourth floor is the all immersive exhibition space for the architecture and interior design companies allowing them to display their projects to the public and clients.



GF.1 : LIVE COOKING RESTAURANT + TUNNEL SPACE



1F.1 : LOCAL ARTIST EXHIBITION AR SPACE

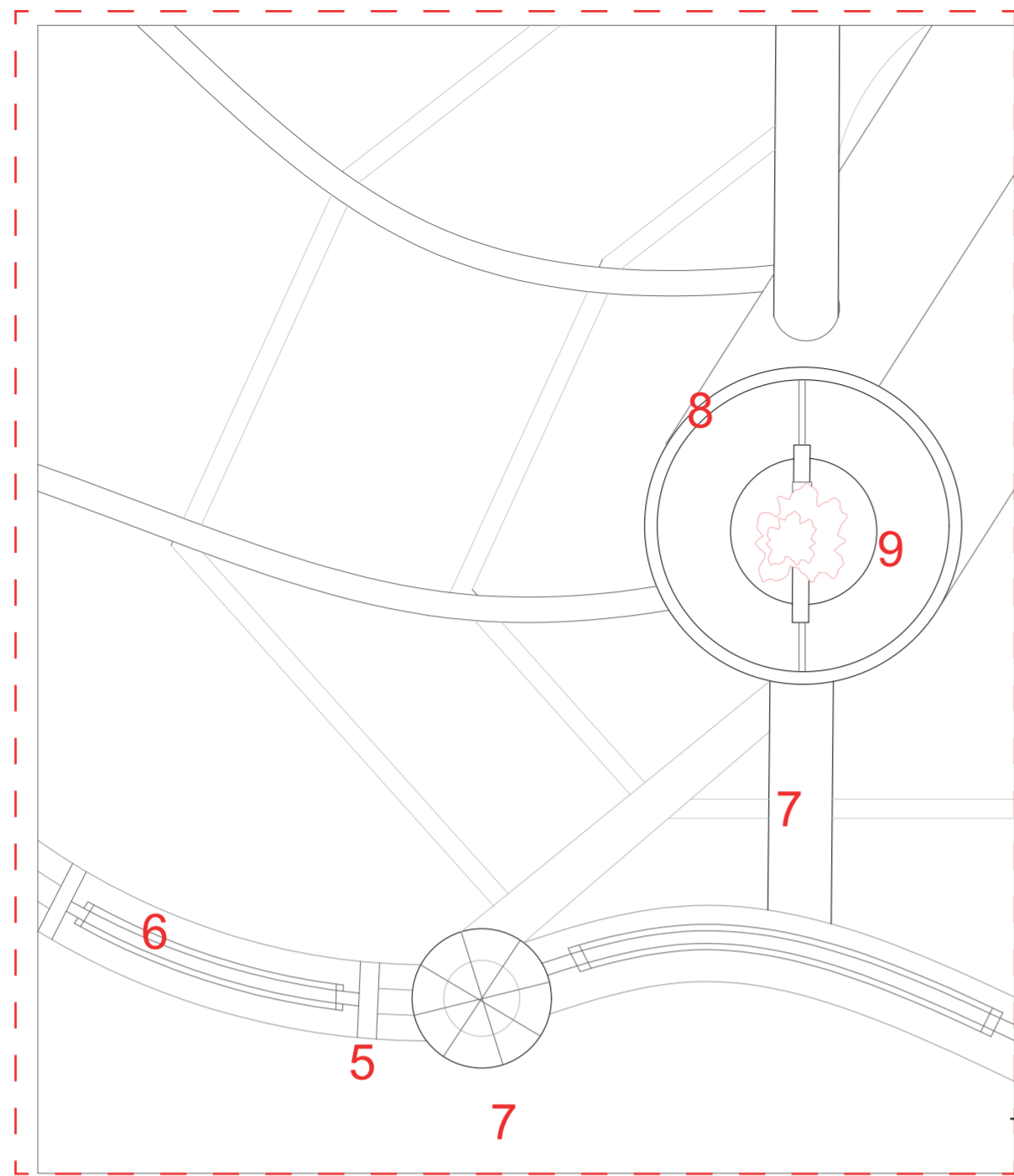


3F.1 : AR GALLERY EXHIBITION SPACE

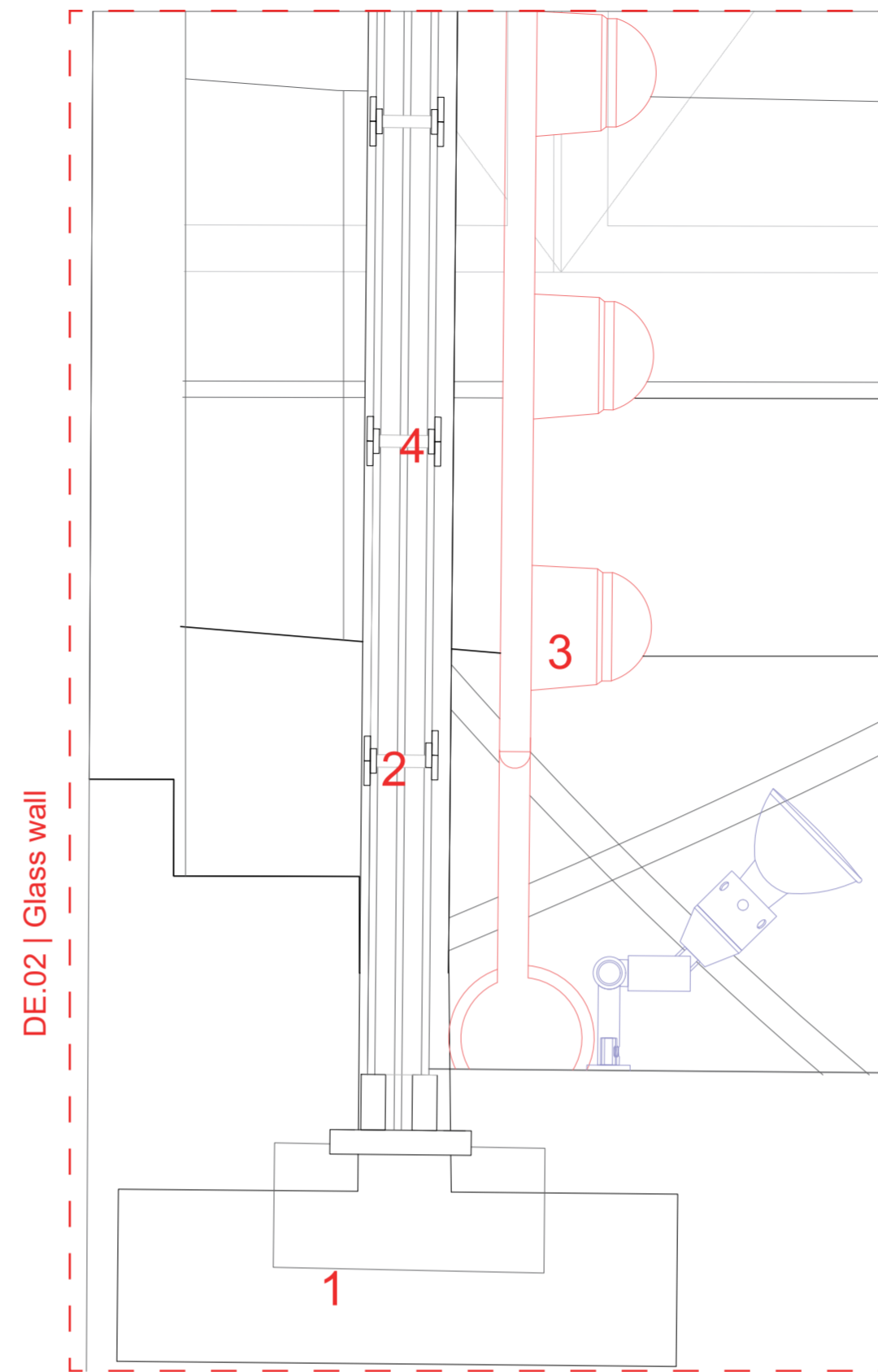
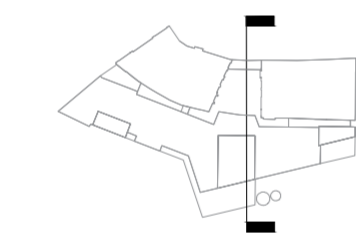


4F.1 : LOCAL COMPANY EXHIBIT SPACE

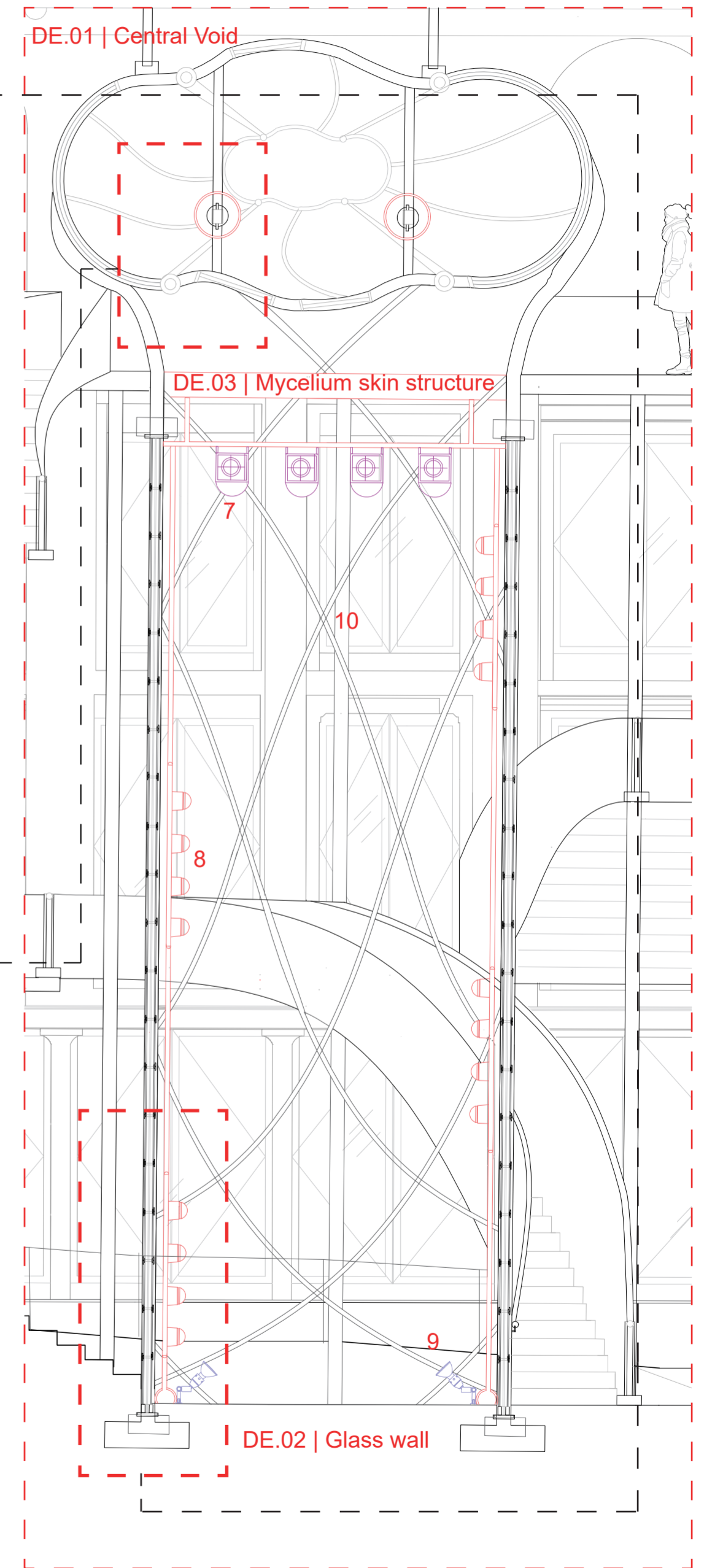




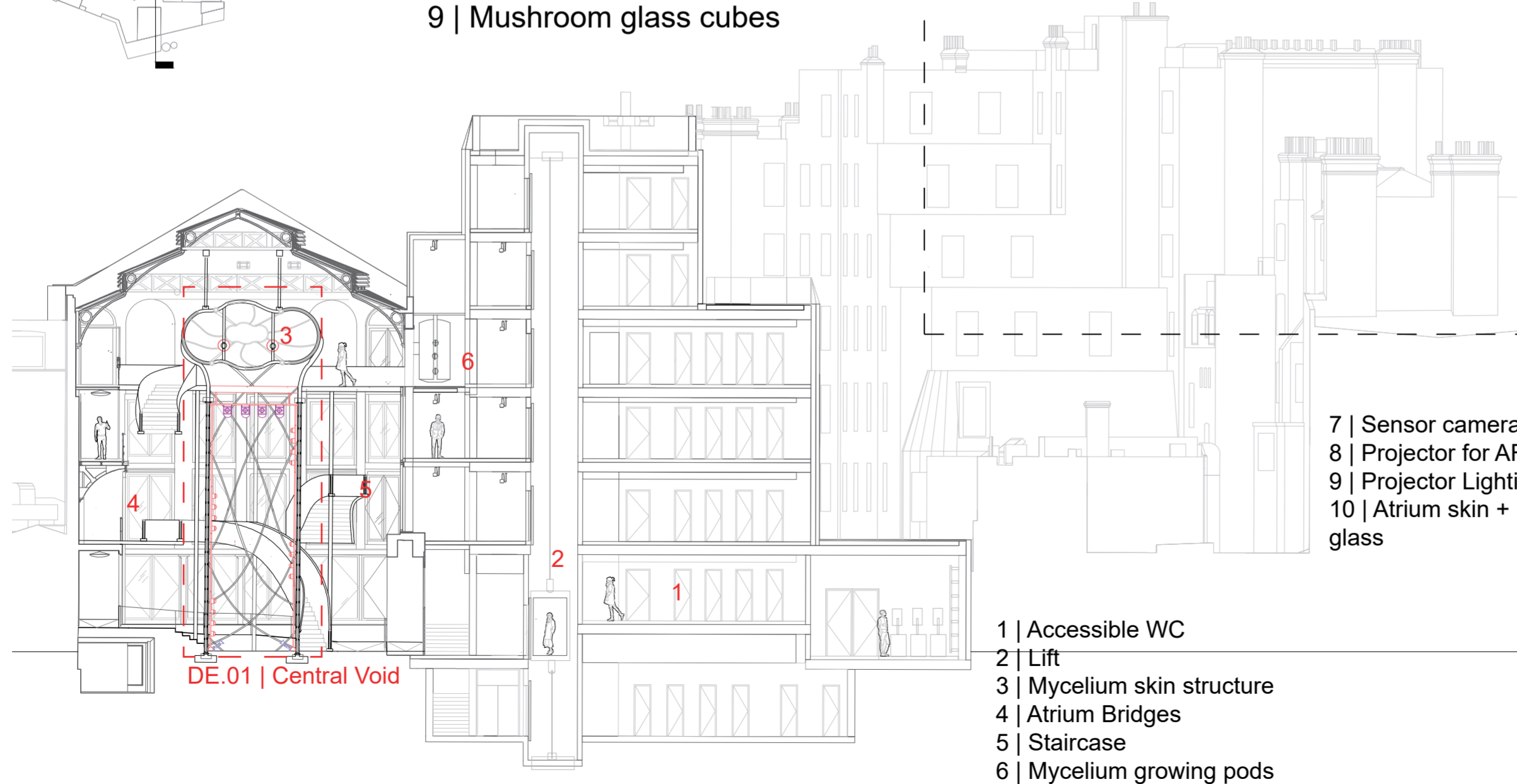
- 5 | Glass + Panel Frame
- 6 | Glass panels
- 7 | Structural beams
- 8 | Moving tubes
- 9 | Mushroom glass cubes



- 1 | Concrete foundation for base
- 2 | Glass panels to fit with the skin structure
- 3 | Moving cameras + sensors
- 4 | Timber brackets for support



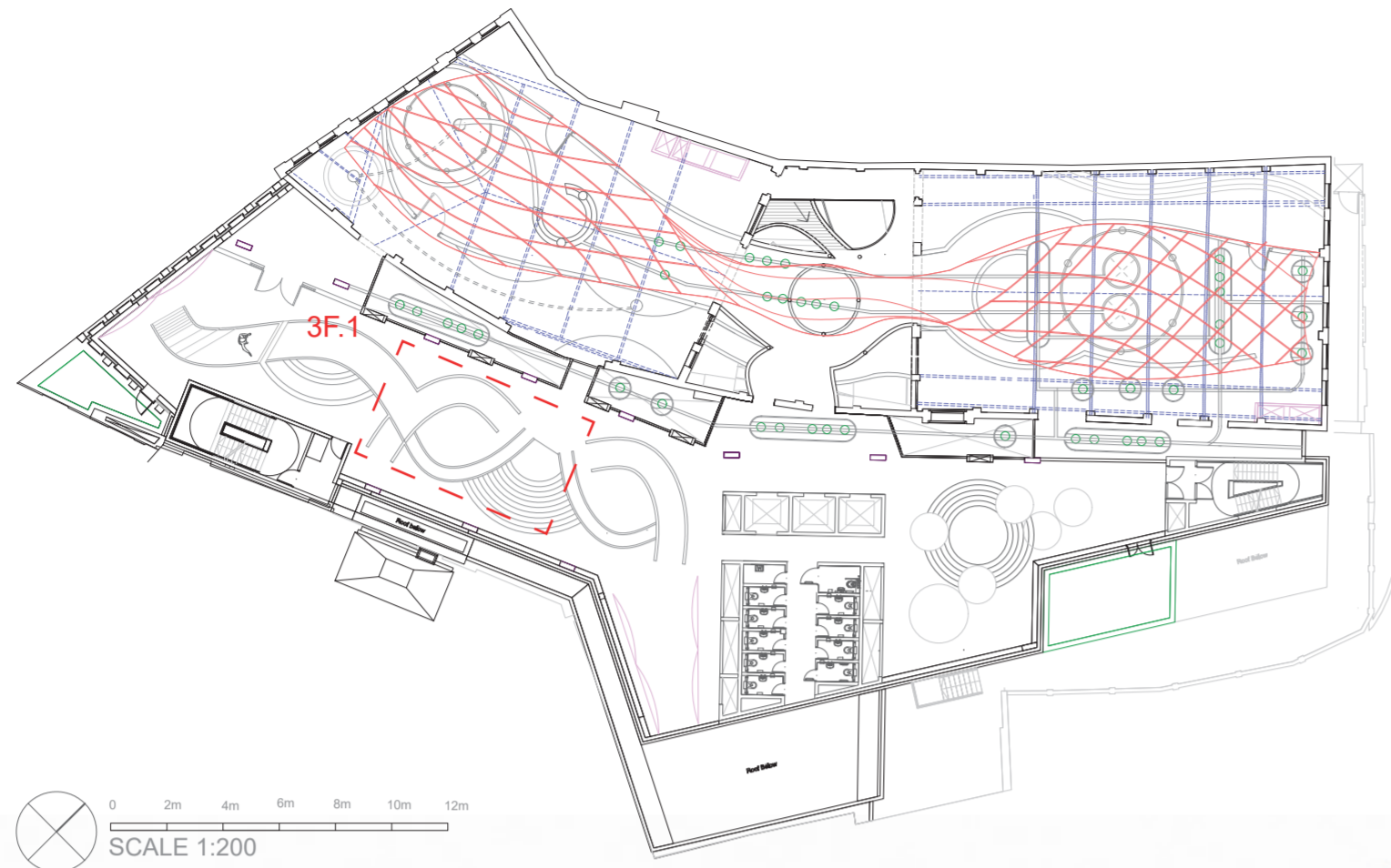
- 7 | Sensor cameras
- 8 | Projector for AR
- 9 | Projector Lighting
- 10 | Atrium skin + glass



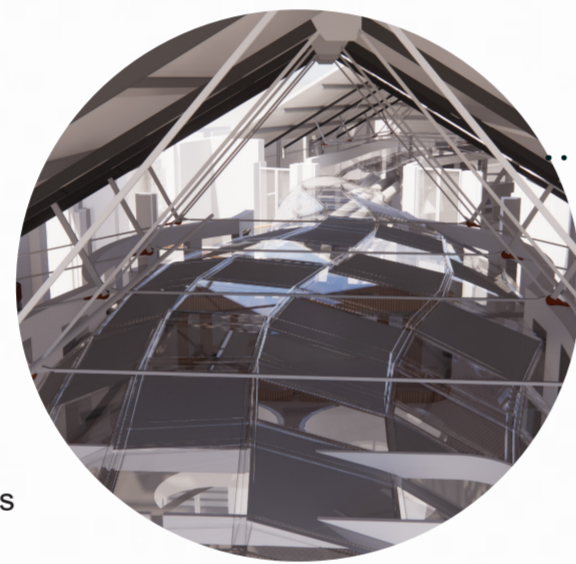
- 1 | Accessible WC
- 2 | Lift
- 3 | Mycelium skin structure
- 4 | Atrium Bridges
- 5 | Staircase
- 6 | Mycelium growing pods

# MYCELIUM SKIN STRUCTURE

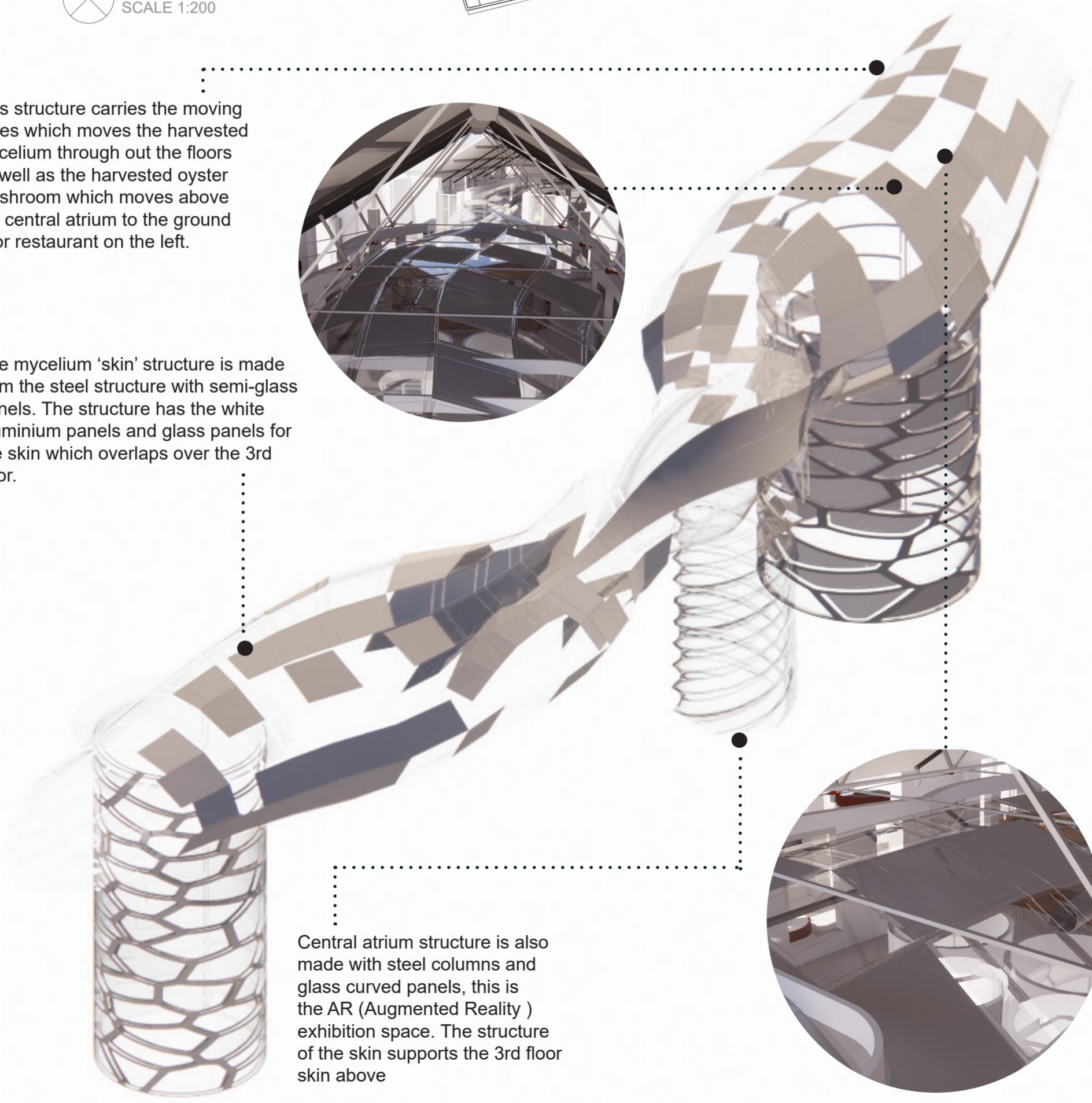
## MYCELIUM 'SKIN' STRUCTURE



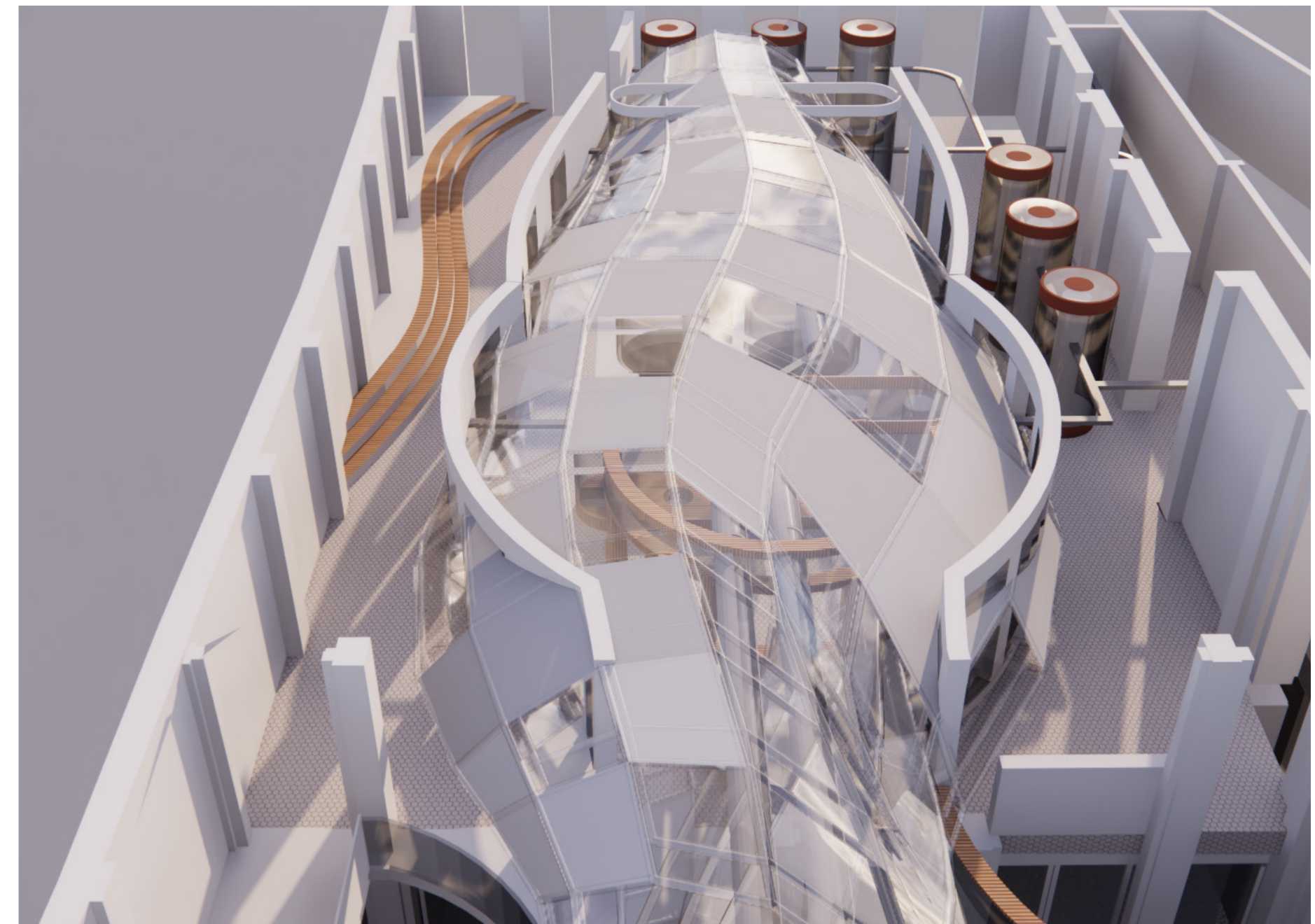
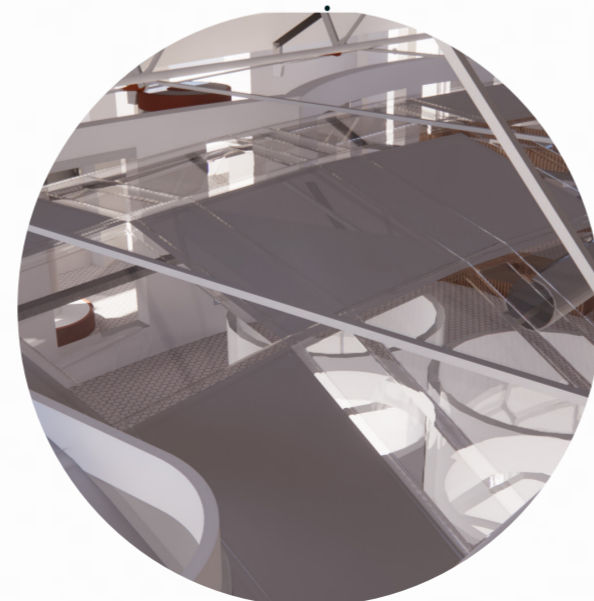
This structure carries the moving tubes which moves the harvested mycelium through out the floors as well as the harvested oyster mushroom which moves above the central atrium to the ground floor restaurant on the left.



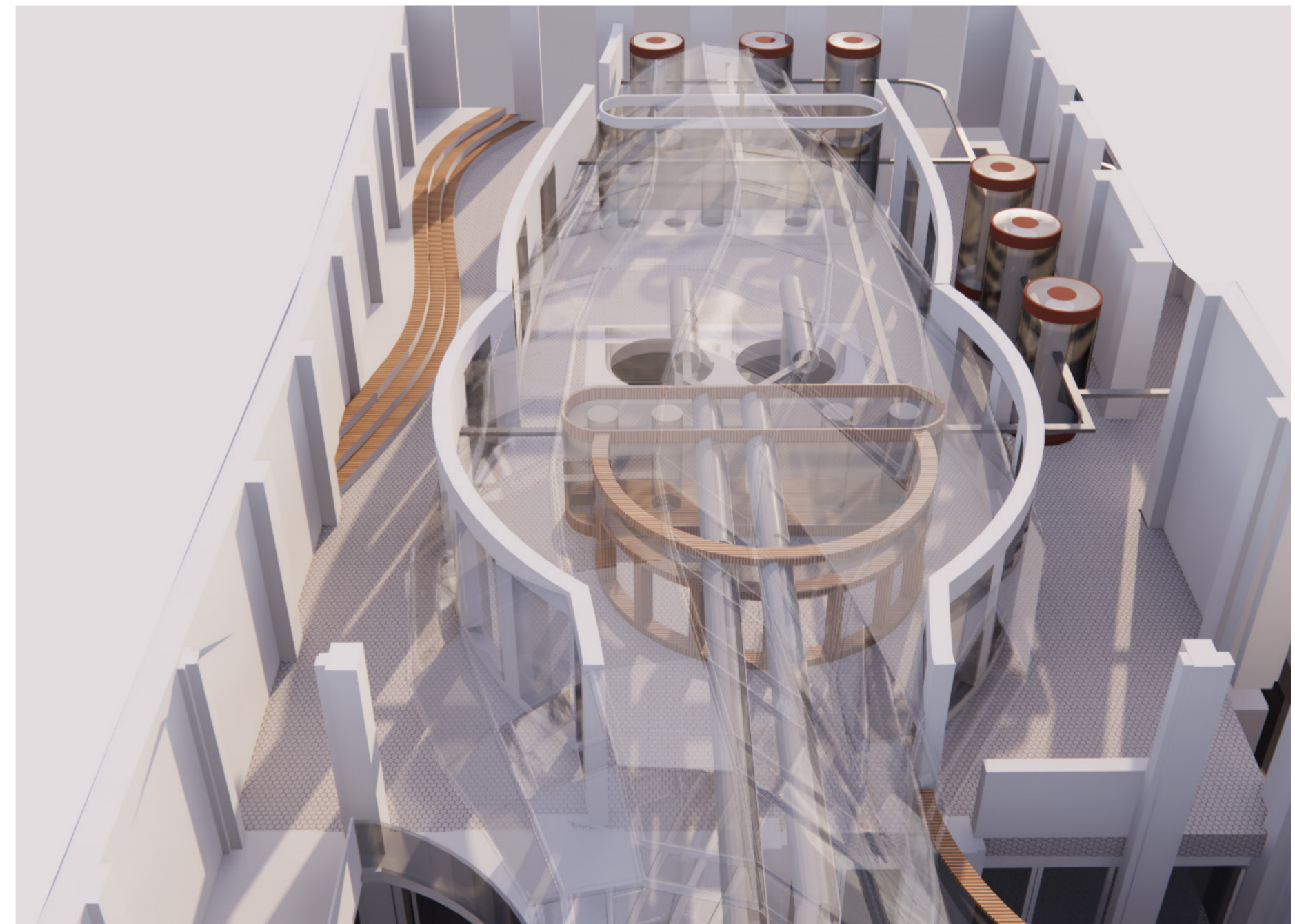
The mycelium 'skin' structure is made from the steel structure with semi-glass panels. The structure has the white aluminium panels and glass panels for the skin which overlaps over the 3rd floor.



Central atrium structure is also made with steel columns and glass curved panels, this is the AR (Augmented Reality) exhibition space. The structure of the skin supports the 3rd floor skin above



3rd floor lab space has the skin structure above the lab which encloses the lab area making it a semi-private space but which can be viewed via the public via the viewing zone. The structure is inspired by the mycelium roots hence has the transparent material with the mesh panels to allow air circulation



3rd floor lab space allows the production of the mushroom mycelium roots which then can be harvested and moved onto the 2nd floor and further on via the moving tubes in the central space