

DESIGN RESEARCH METHODS

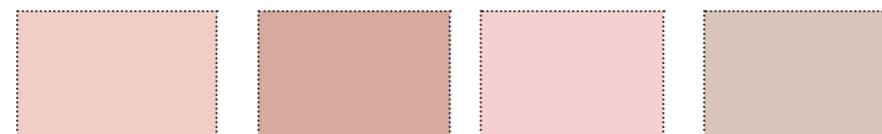
BARBIE HOUSE

By Larisa Anamaria Tanasache



Site location:
Bury Saint Edmunds,
31 Hospital Road
IP333JU

Material Moodboard



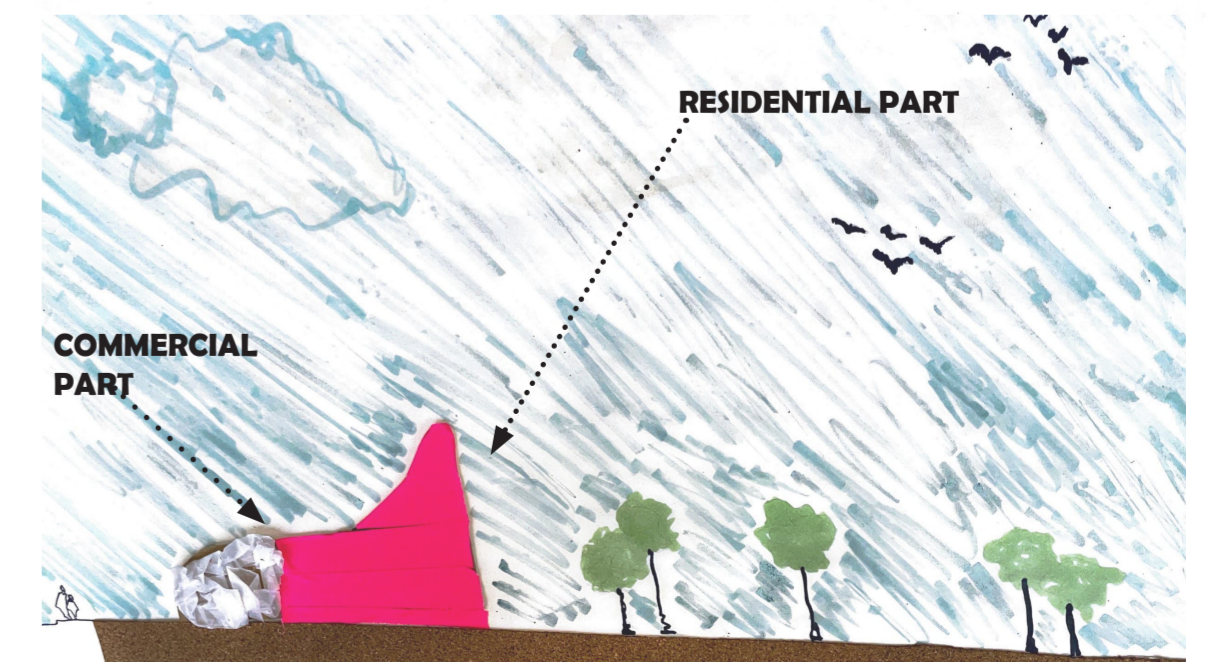
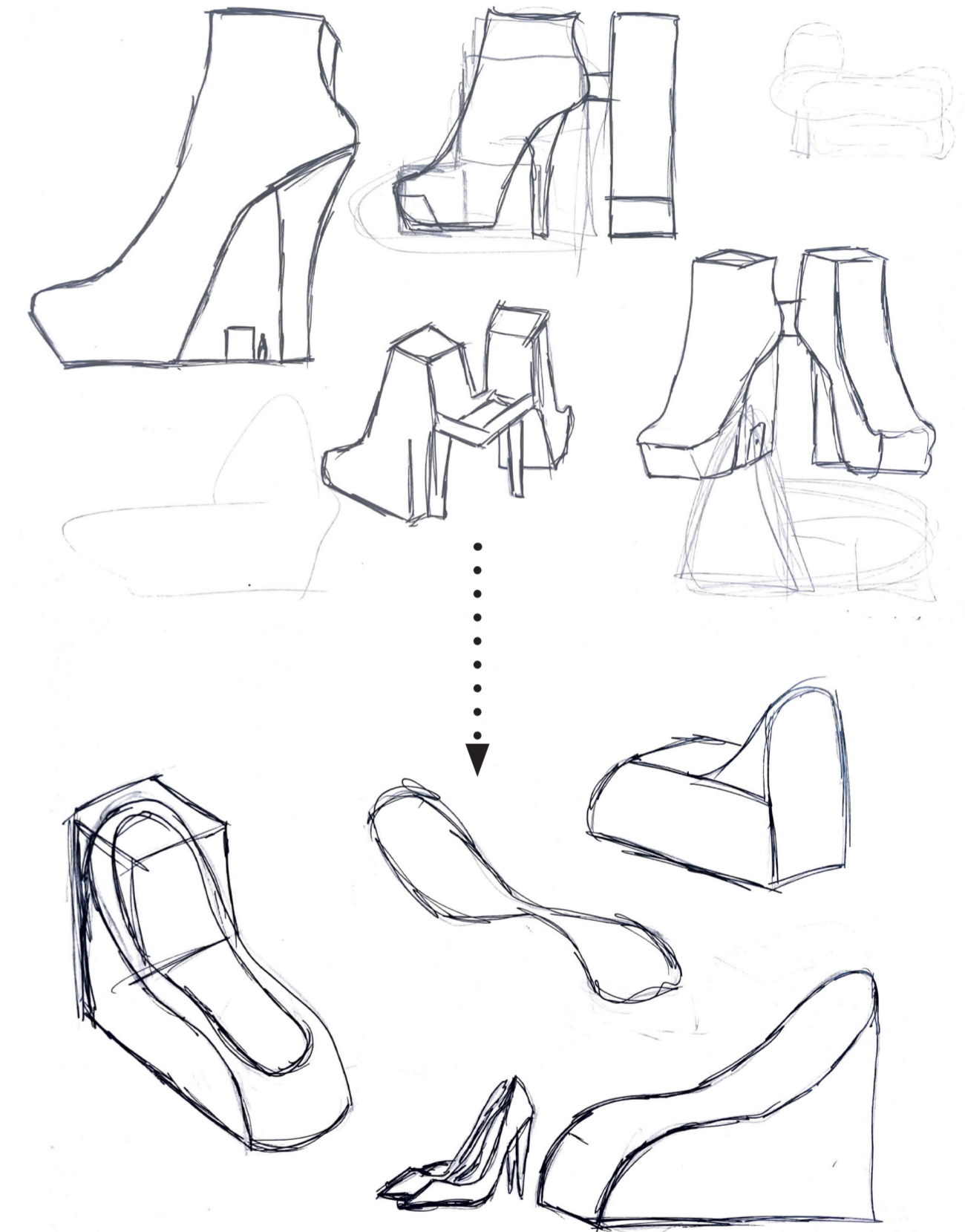
Inspiration Moodboard



BRIEF:

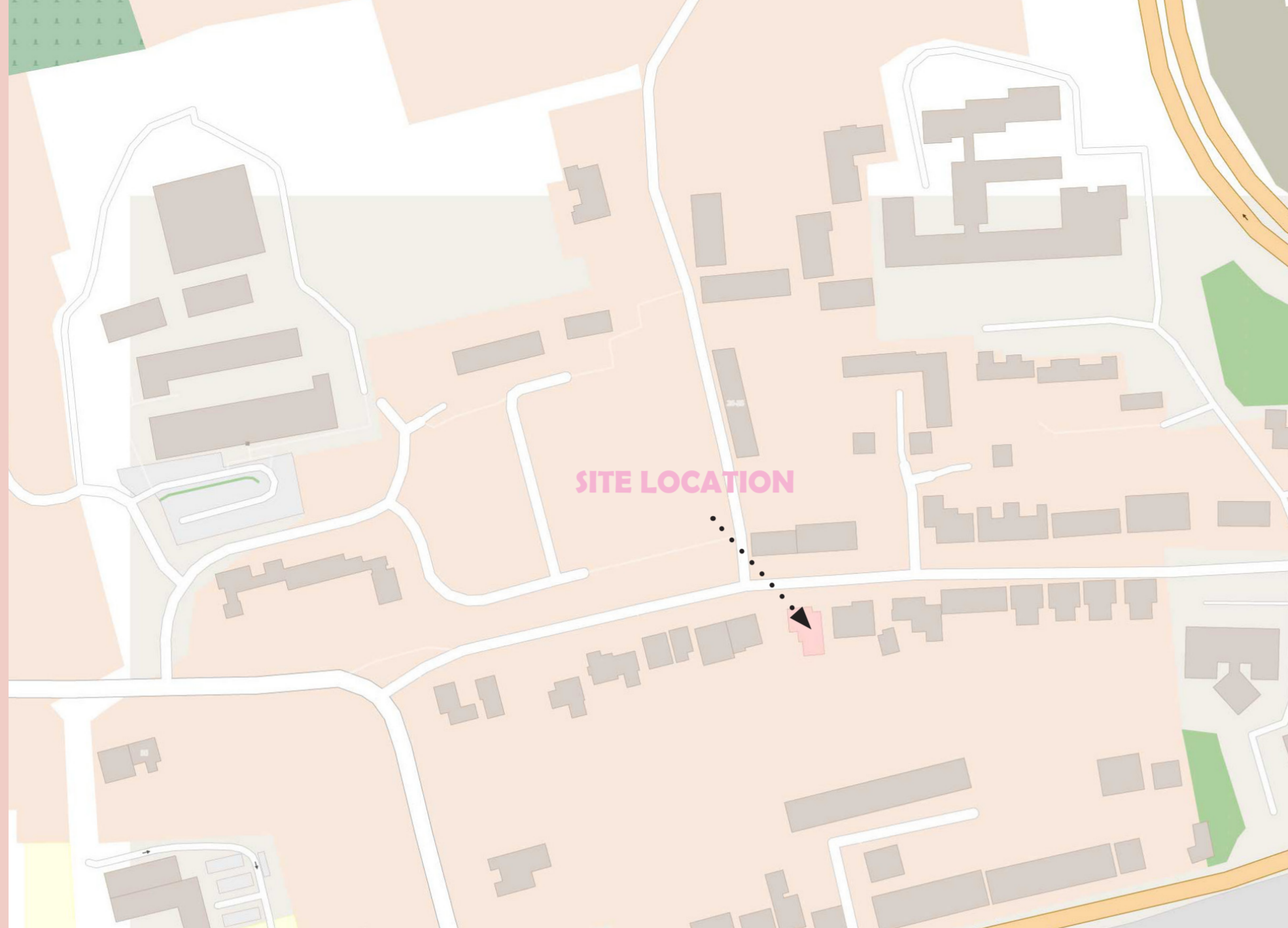
The brief of this project was to redesign a residential space for a client of our choice, while also integrating a second function on the side of the residential elements. My project blends a Barbie themed residential space with an organic-shaped heel boutique that embodies a visionary approach to interior design. The juxtaposition of vibrant Barbie aesthetics with natural cave like elements in the boutique showcases a forward-thinking fusion of styles. This innovative combination challenges traditional design norms, offering a glimpse into future interior trends by embracing diverse and contrasting inspirations. The project's dynamic blend of Barbie-inspired residential charm and organic cave-like boutique allure creates a captivating narrative that pushes the boundaries of traditional interior design, highlighting its potential to shape and inspire the future of interior spaces

INITIAL SKETCHES:



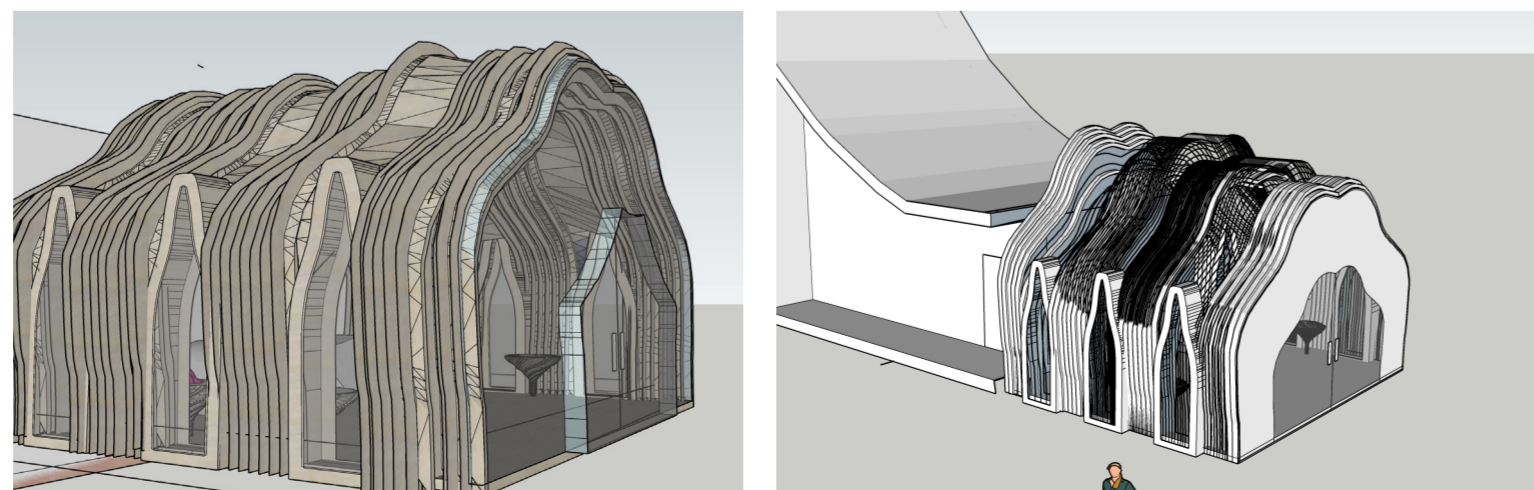
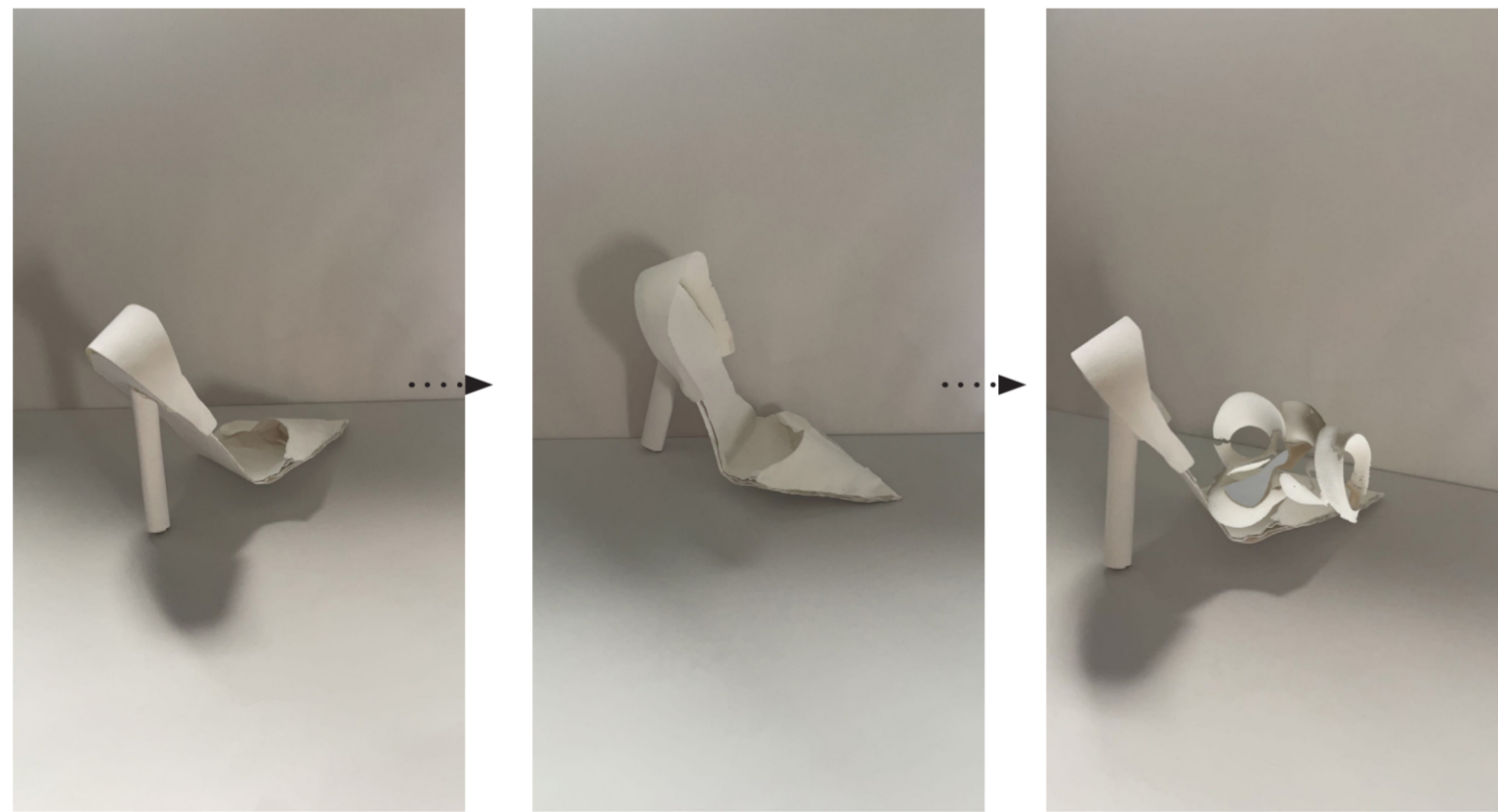
DESIGN RESEARCH METHODS

BARBIE HOUSE



INITIAL CONCEPT:WEAREABLE MODEL

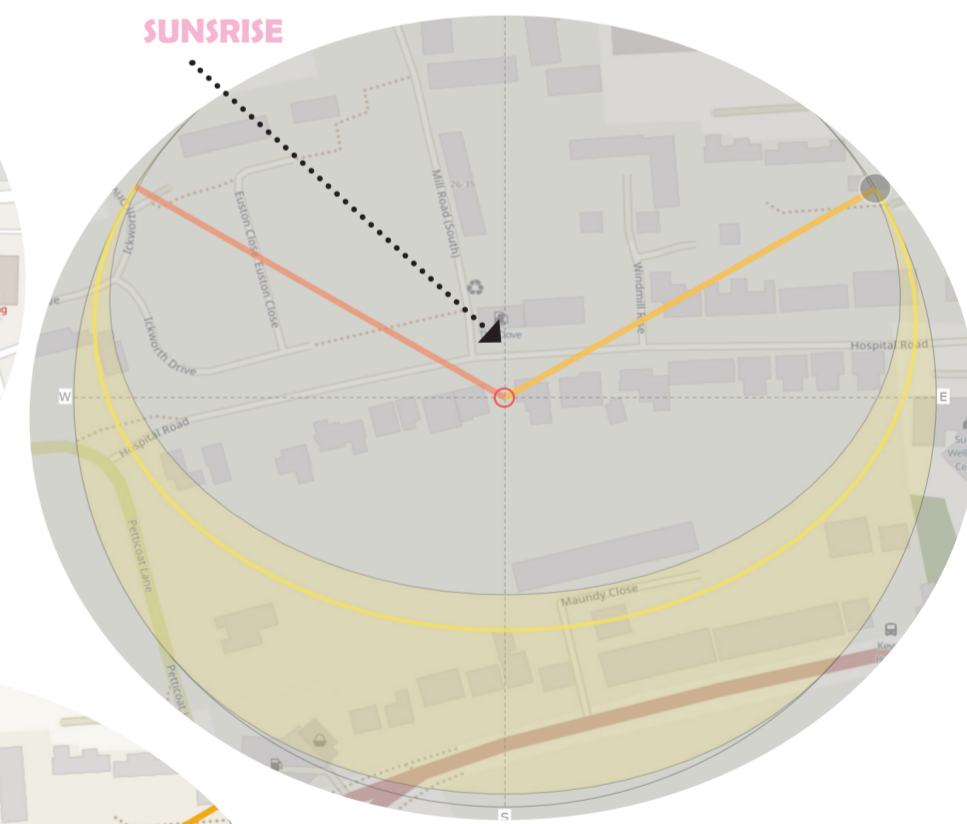
The building is inspired by a heel which adds a unique and captivating element to the design while also reflecting Barbie's love for fashion.



SITE ANALYSIS

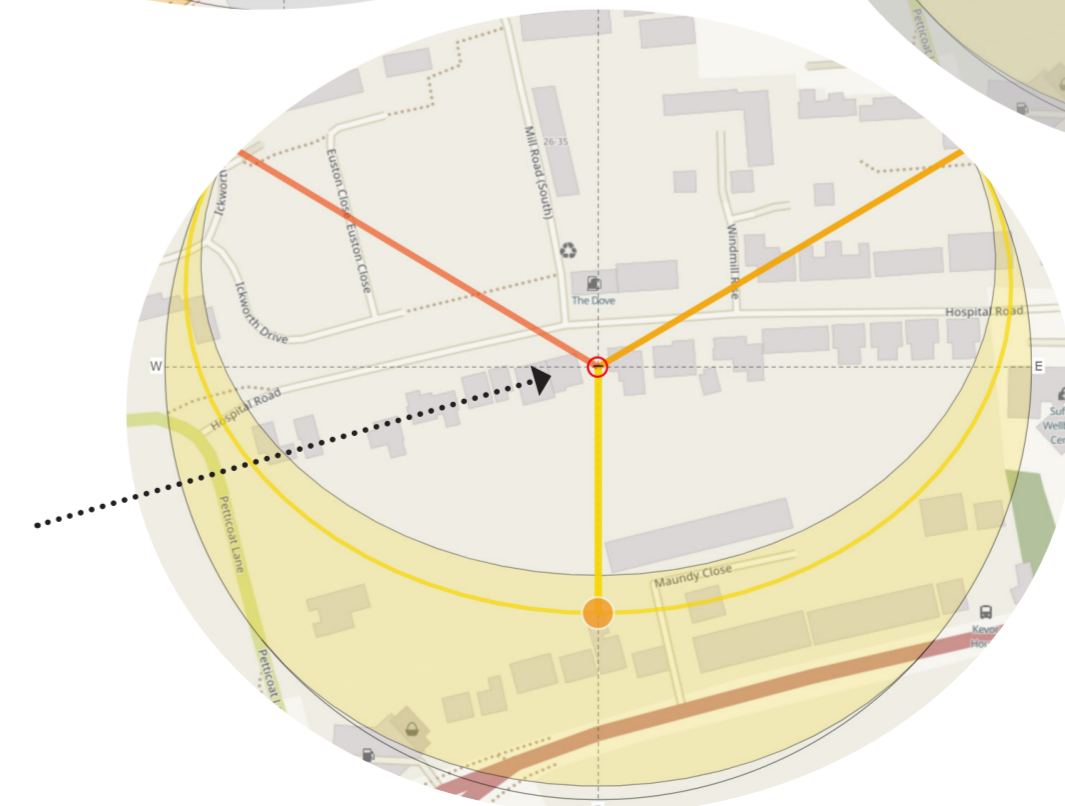


SUNSET



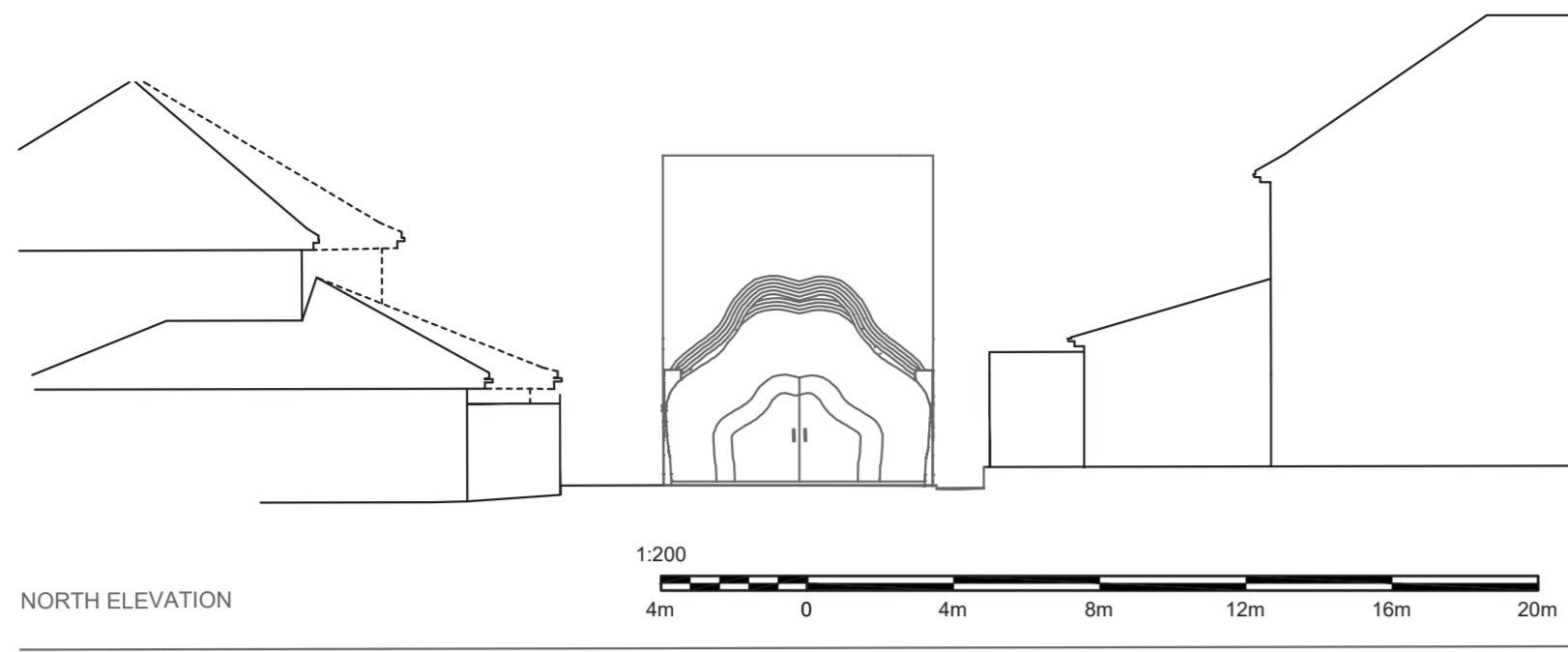
SUNRISE

CULMINATION



DESIGN RESEARCH METHODS

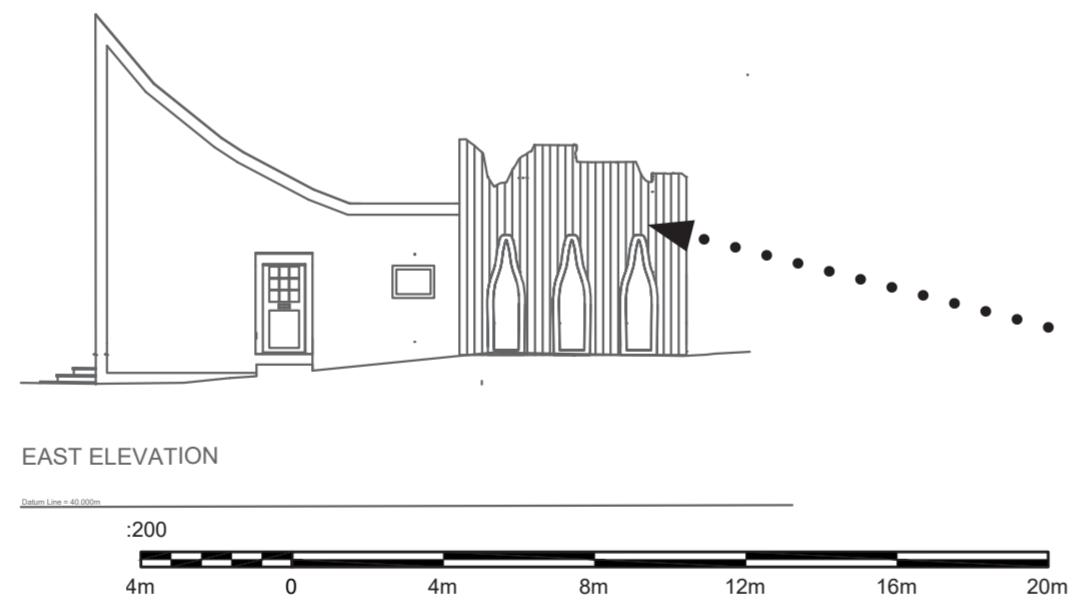
BARBIE HOUSE



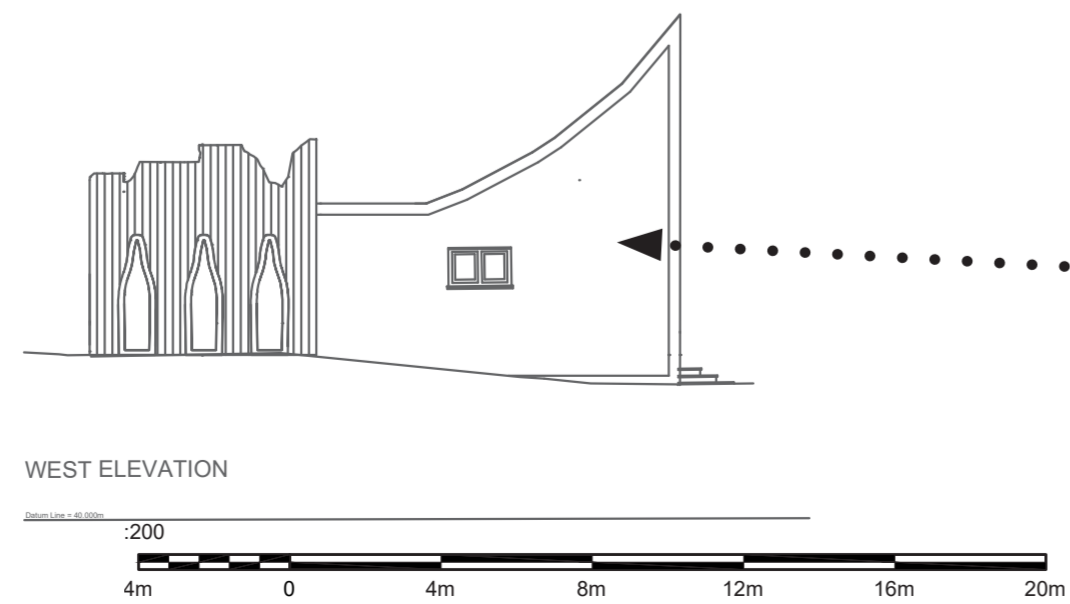
NORTH ELEVATION



SOUTH ELEVATION

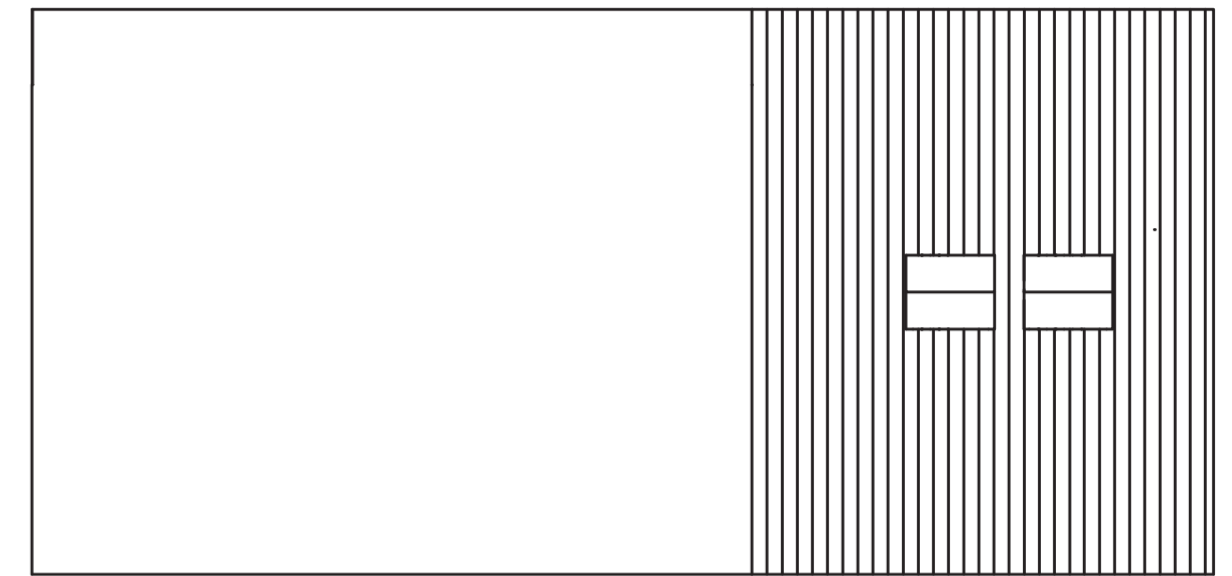


EAST ELEVATION

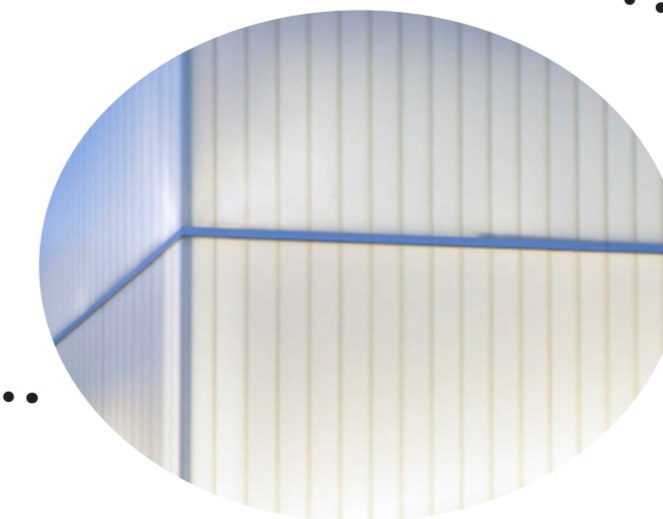
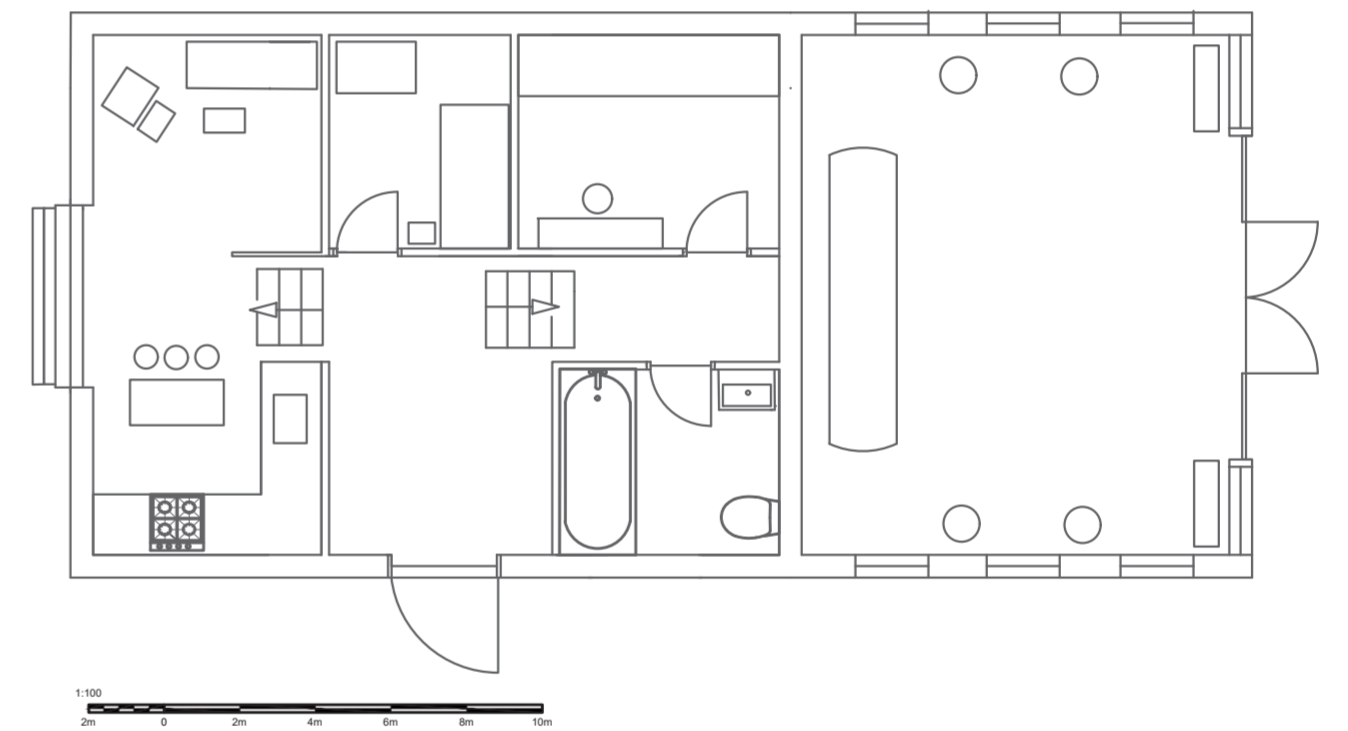


WEST ELEVATION

ROOF PLAN



FLOOR PLAN



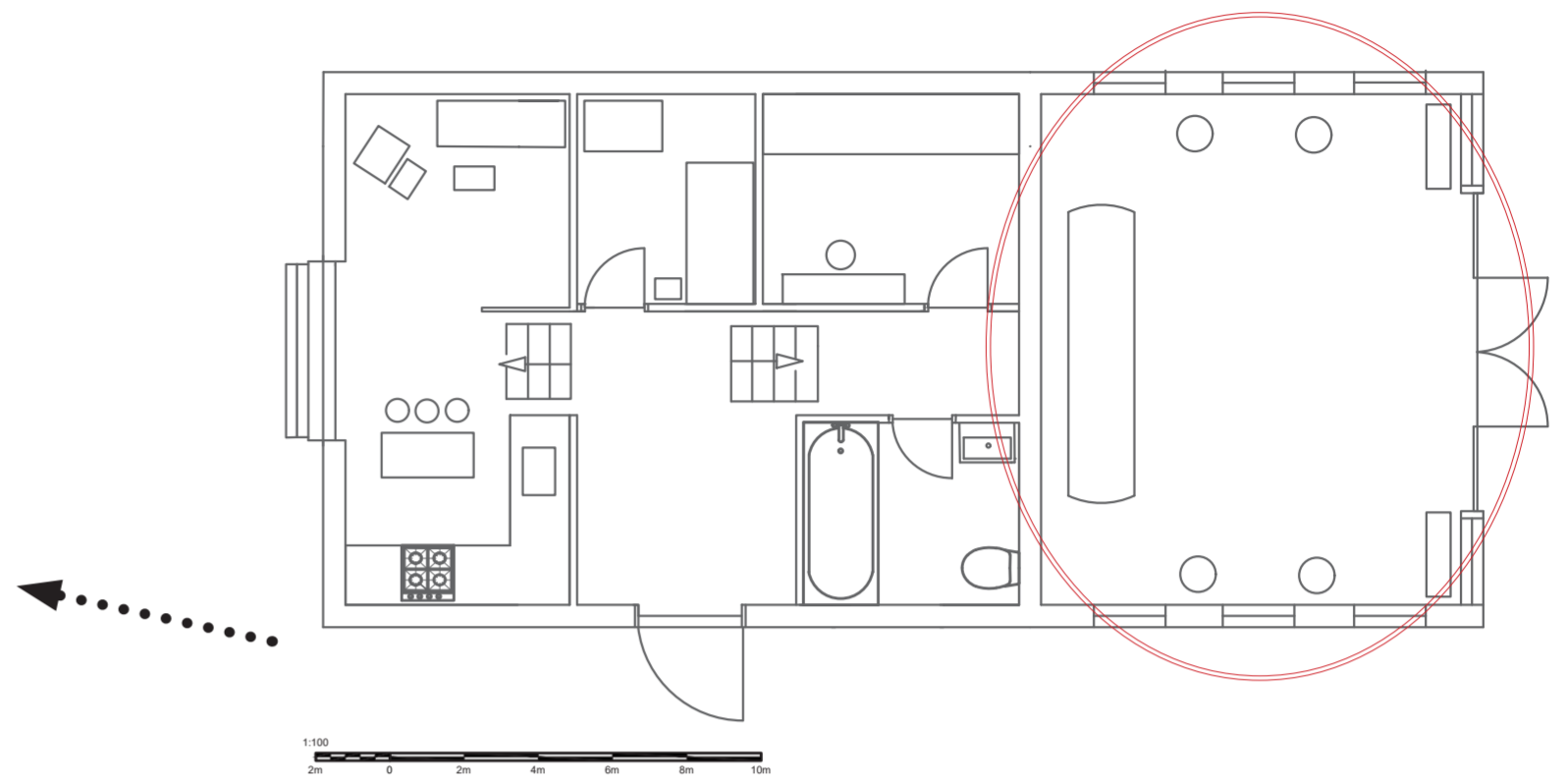
polycarbonate panels



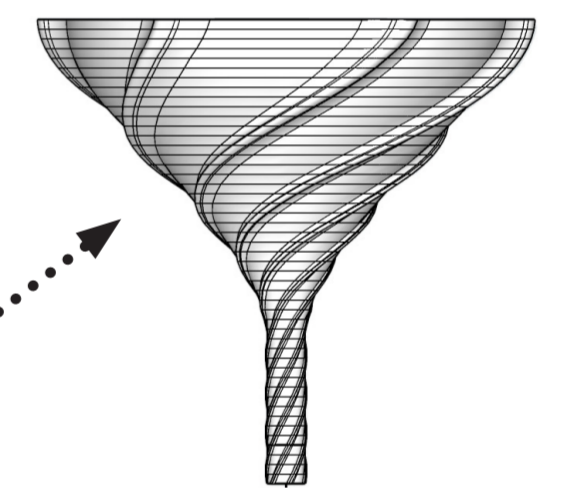
bamboo

DESIGN RESEARCH METHODS

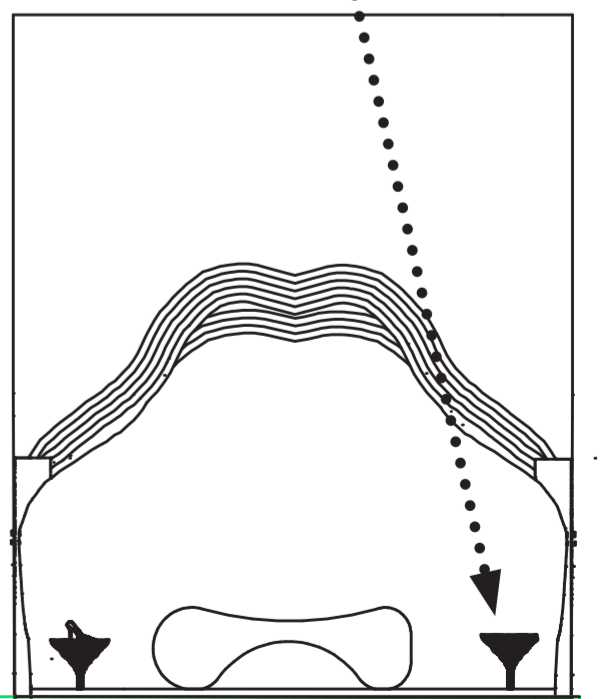
BARBIE HOUSE



High heel holder



SECTION



I decided to use plywood for the high heel holders because it's a strong and durable material but at the same time it's also very flexible, allowing me to create this organic shape illusion.

DESIGN RESEARCH METHODS

BARBIE HOUSE



The residential area is designed with vibrant pink patterns and bright colors, creating a lively atmosphere. On the other hand, the boutique is made out of bamboo and features a more neutral color palette, such as beige, creating a beautiful contrast between the two space.

