

EALING CIVIC CENTRE



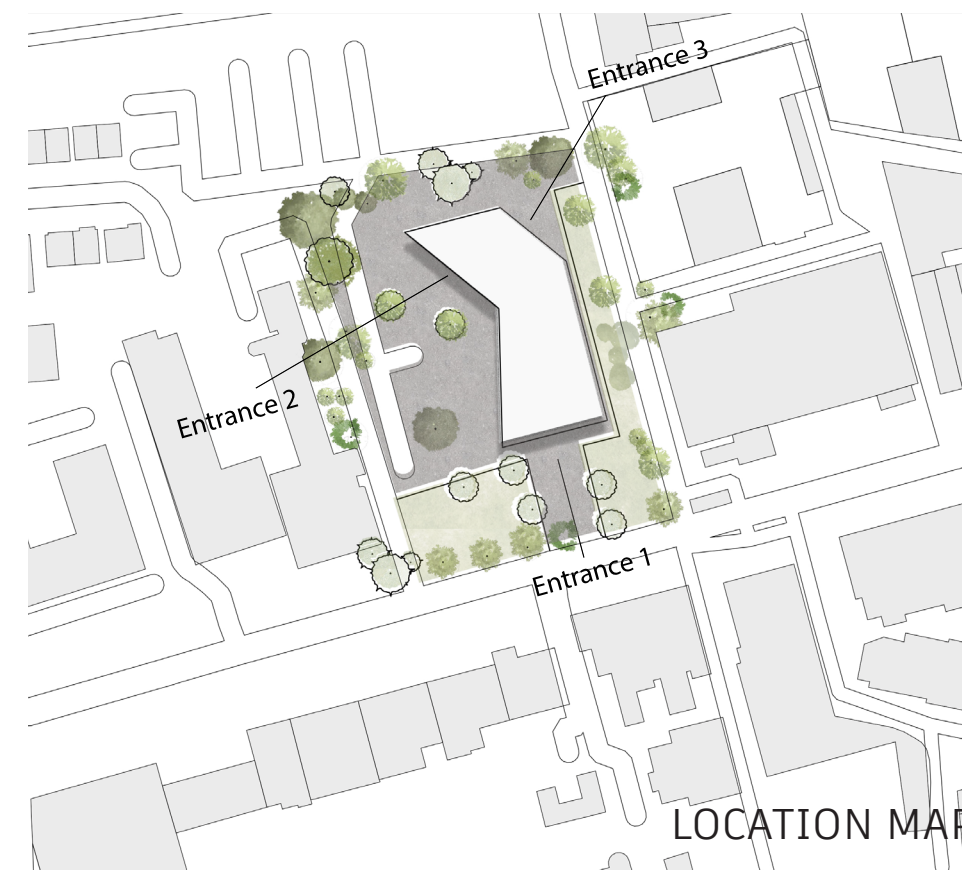
SOUTH FACADE - MAIN ENTRANCE

Ealing is one of London's greenest boroughs and has a strong sense of community, but its facilities don't always reflect its potential. While there are parks, schools, and cultural events, there isn't a centralized hub where residents can connect, learn, and grow. Many families, freelancers, and individuals often find themselves traveling to other areas for recreational, educational, or co-working spaces that meet their needs. This inspired me to design a **community, educational, and recreational centre** that fills this gap.



WEST FACADE - SIDE ENTRANCE

Ealing Civic Centre is a proposal for a **new community hub** located on the site of the existing Ealing Council building. The project responds to the borough's rapid development and growing population by creating a space that combines educational and recreational functions. Designed to support Ealing's diverse community of families, young professionals, and entrepreneurs, the building aims to foster **social connection, lifelong learning, and opportunities for small businesses**.



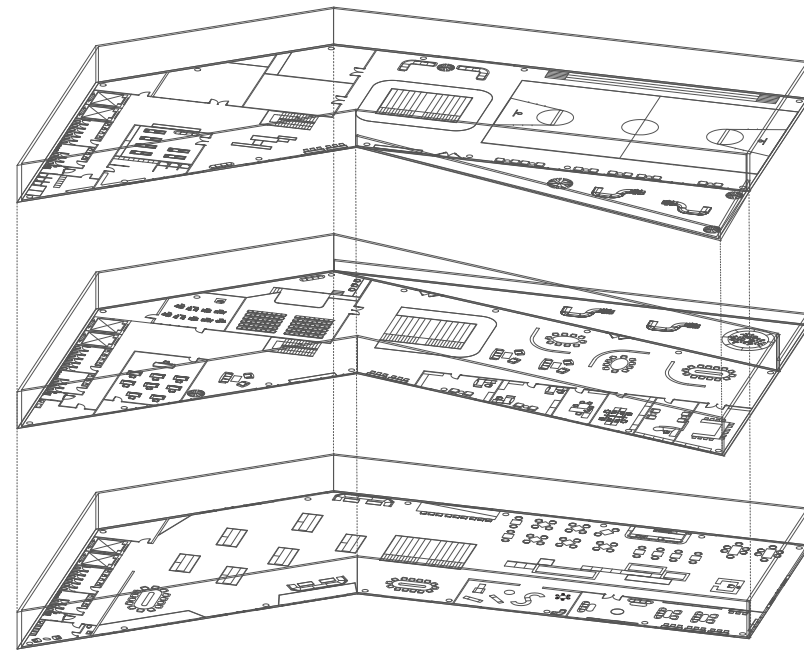
My vision was to create a space where

- Families can spend their days engaging in play, learning, or relaxation.
- Entrepreneurs and freelancers can work in a productive environment close to home.
- Residents can access creative and educational workshops, fostering personal growth.
- Fitness enthusiasts can participate in sports, wellness activities, and recreational pursuits.
- The community as a whole can come together for cultural events, performances, and celebrations.

GROUND FLOOR



The building spans three floors.
-The ground floor is designed as the vibrant core of the building, fostering connection and engagement among Ealing residents. This floor features a cafe and kids' corner, a reading room and workspace, central steps, and pop-up stalls.



SECTION B



READING ROOM



CAFE



KIDS' CORNER



OFFICE

FIRST FLOOR



-The first floor is dedicated to personal and professional development, offering diverse opportunities for learning, innovation, and cultural expression. This floor contains Classrooms, Auditorium with backstage, Co-working offices, and Terrace with greenery.

SECTION A



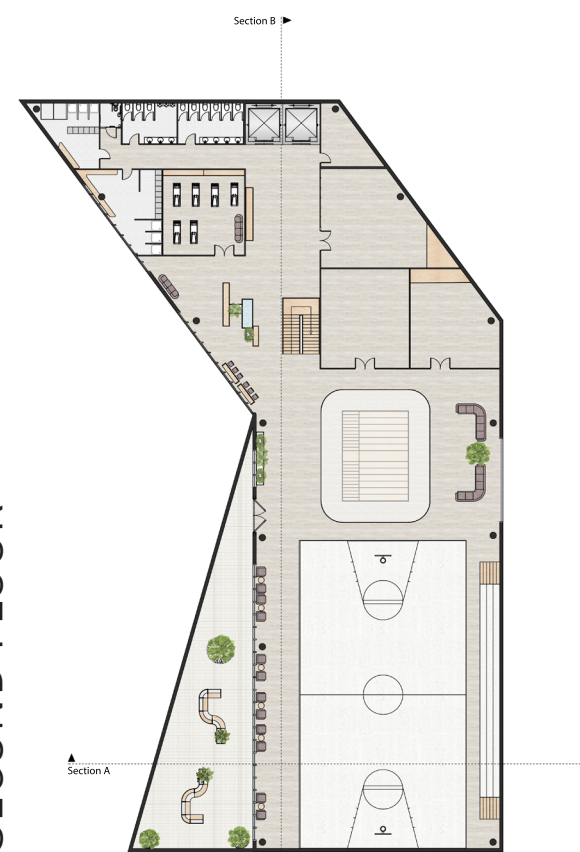
STAIRS & MAIN ATRIUM



MAIN ATRIUM



SECOND FLOOR



-The second floor is a dynamic and energetic space focused on physical health and recreation, offering facilities for a variety of sports and activities. On this floor there is a Multifunctional sports court, Climbing wall, Activity rooms and changing rooms.