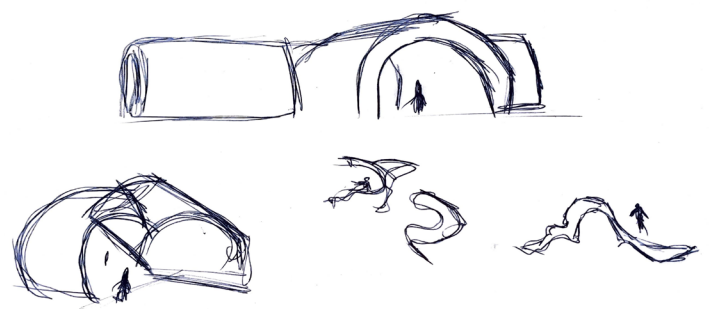
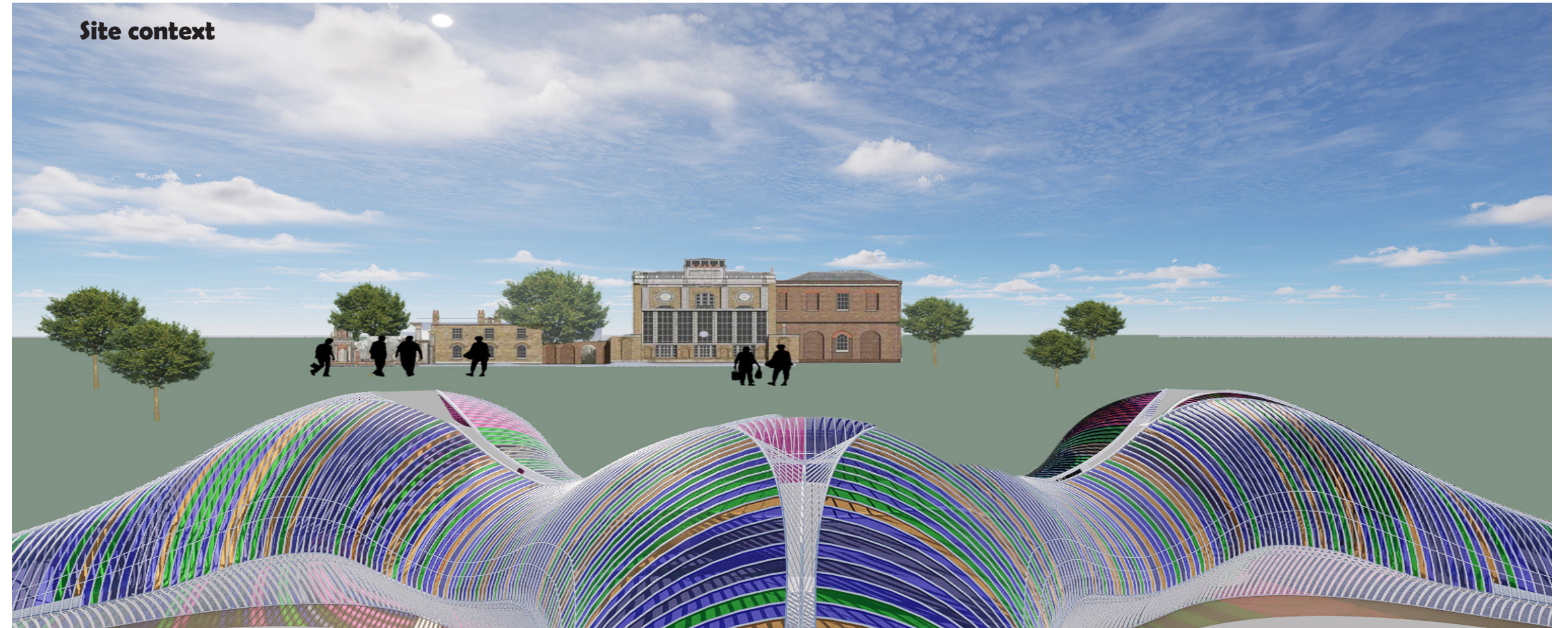
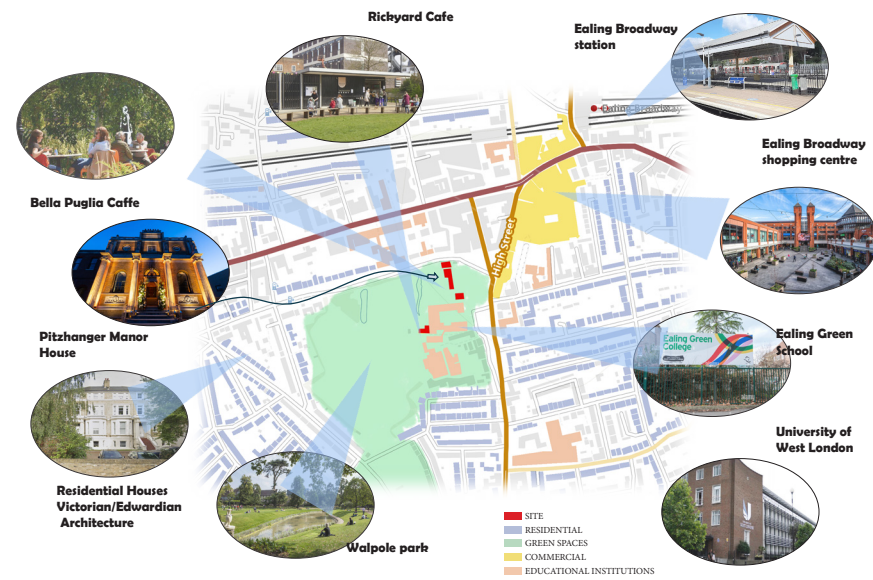




The Pitzhanger Manor Pavilion is designed to blend modern architecture with the site's rich history, inspired by John Soane's playful use of shapes and light. Its flowing glass structure, made with organic curves, interacts with natural light to create a space that feels bright and open during the day and calm and peaceful in the evening.



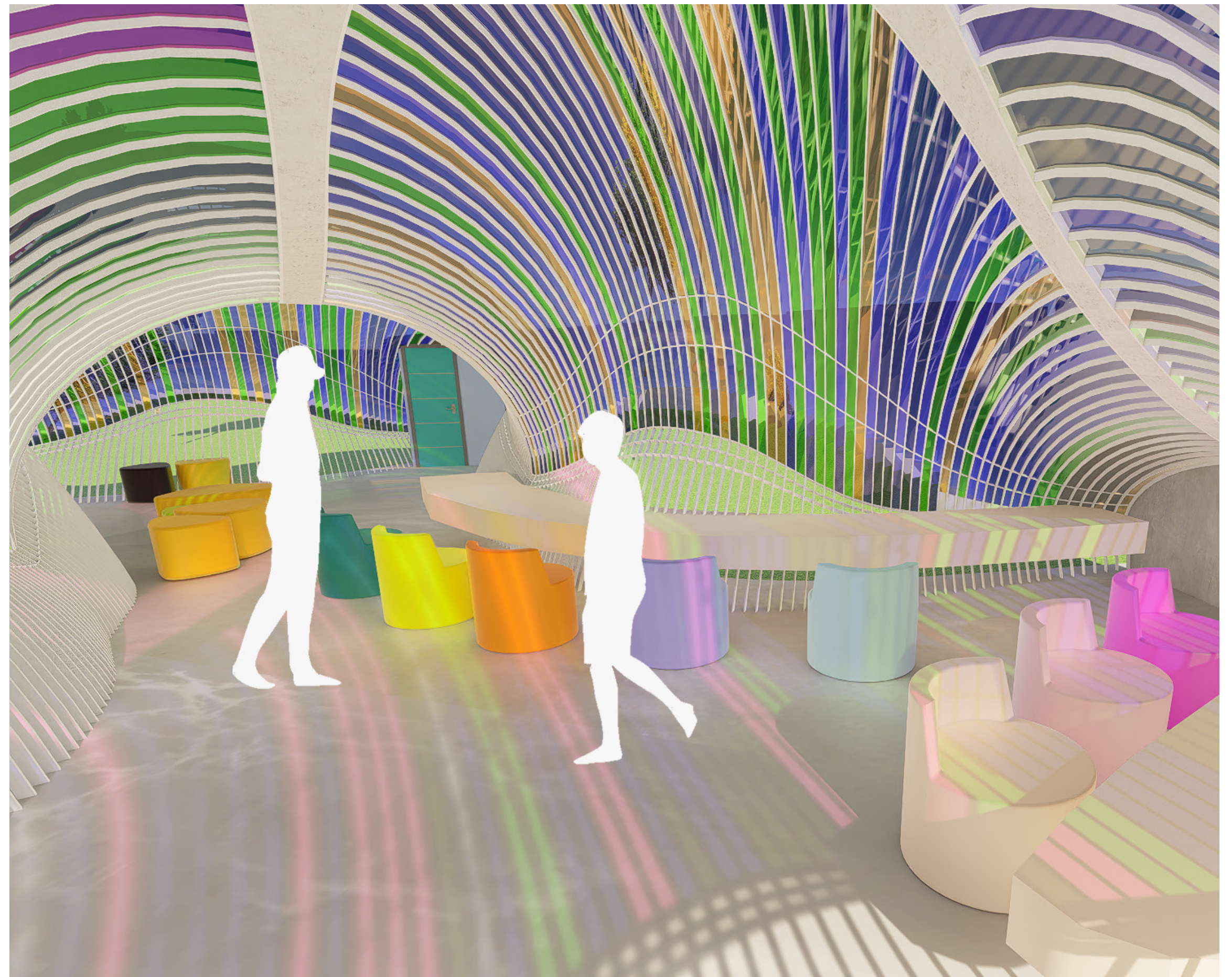
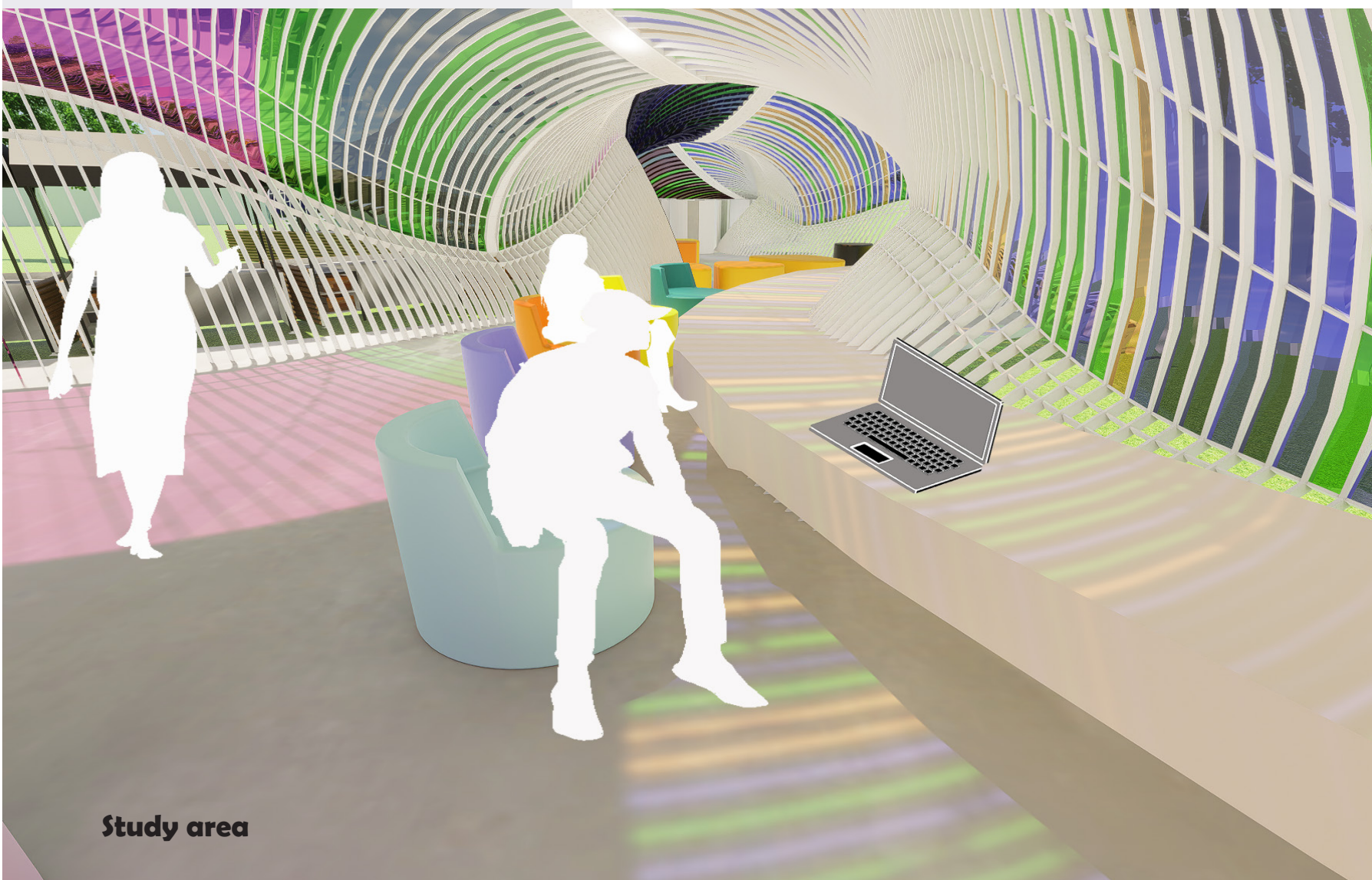
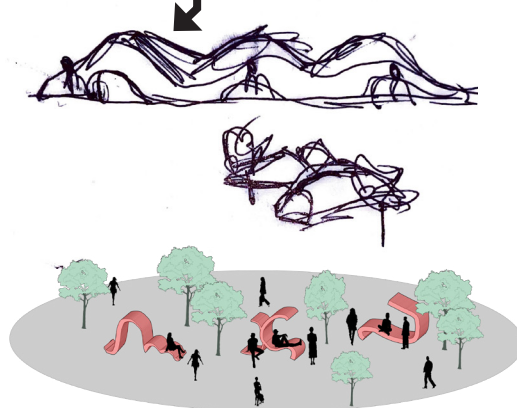
NEIGHBOURHOOD SURROUNDINGS



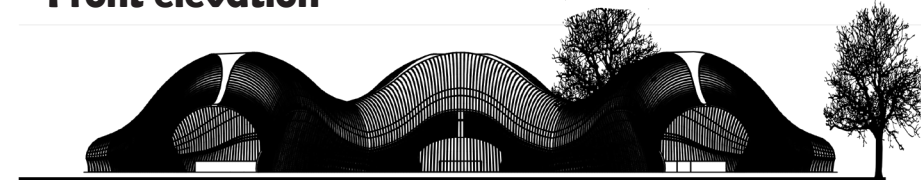
INSPIRATIONAL MOODBOARD



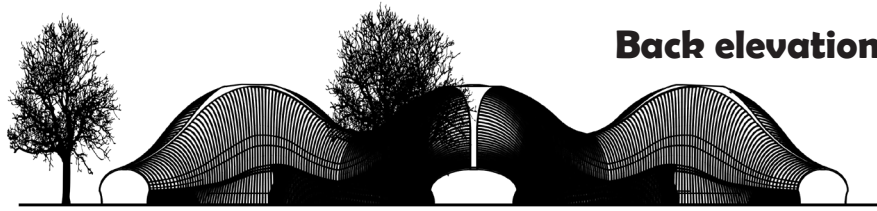
The pavilion is also a space for the community to relax, work, or read. It includes a maze wall where visitors can share their own art and ideas, as well as a weekend market stall that supports local artists and businesses. The design encourages creativity, connection, and a sense of belonging.



Front elevation



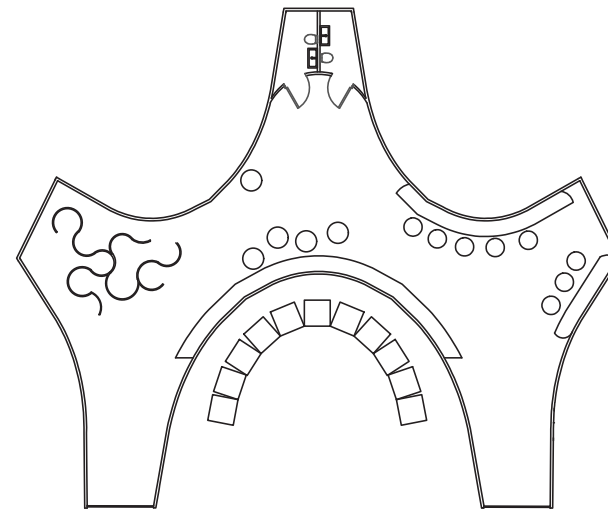
Back elevation



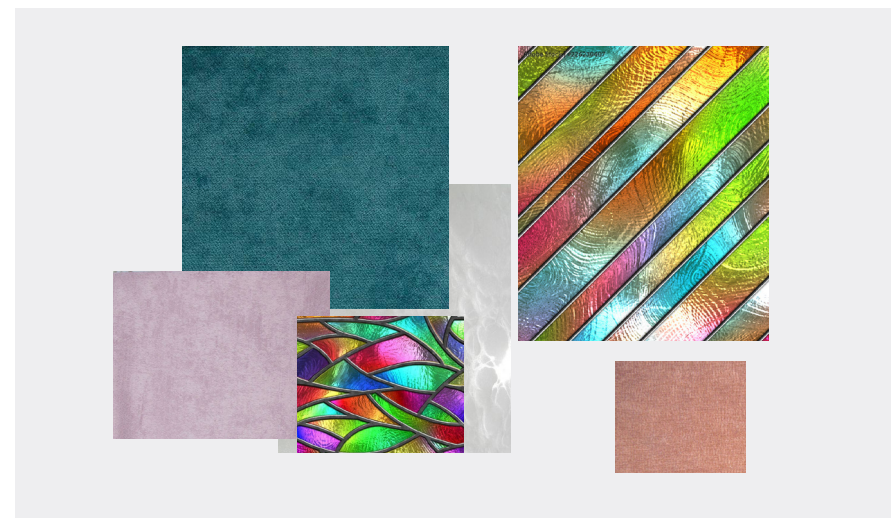
Side elevation



Floor plan

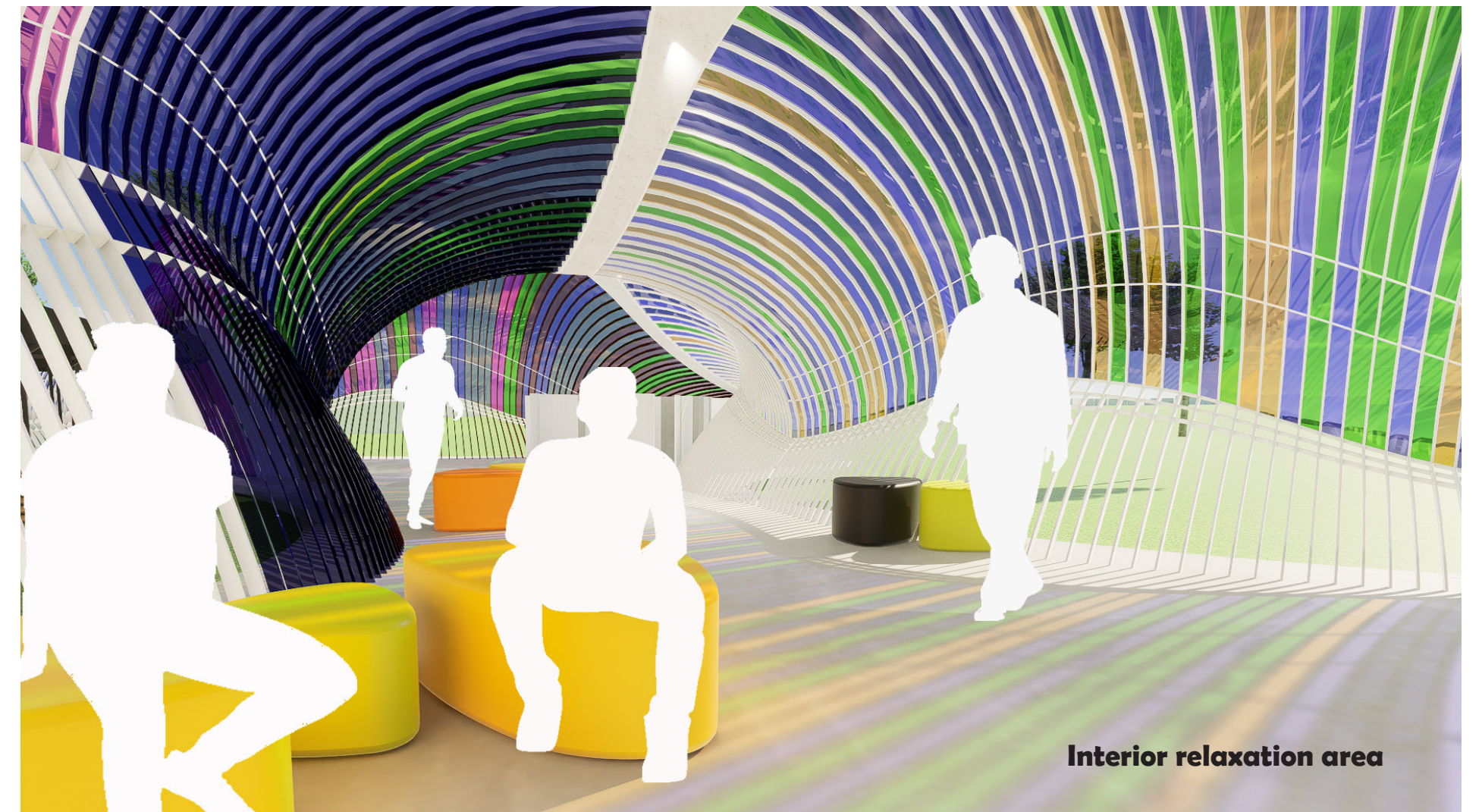


Material Moodboard

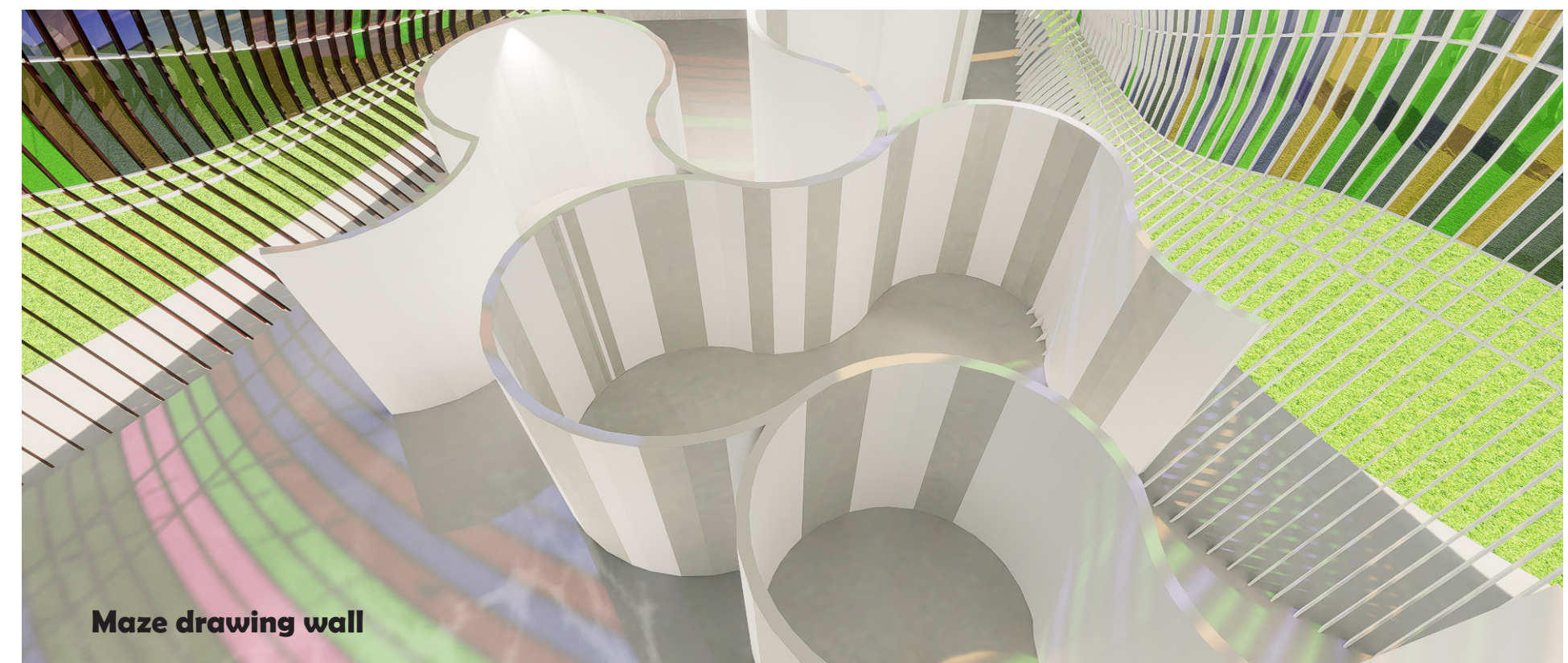


The design uses large glass panels to bring natural light into the space, creating a constantly changing atmosphere throughout the day. In the morning, soft light fills the interior, while by midday, brighter, vibrant reflections are cast across the space. As the day progresses, the light shifts, creating a more relaxed ambiance in the evening. This dynamic use of light and glass connects to John Soane's love for experimentation with light in his own designs, where he often used natural light to transform spaces into a contemporary experience.

Zoning diagram



Interior relaxation area



Maze drawing wall

Market stall

