

STELLA'S VOGUE HABITAT

Where luxury meets Eco-Conscious Design

The brief is to design a residence with a secondary function for a client of our choice. In the heart of my design lies a harmonious duality, a dialogue between two distinct spaces: Stella McCartney's residence and her boutique. The residence is a modern home with straight lines and elemental materials, such as stone, glass, concrete, and bamboo flooring, reflecting permanence and simplicity. The boutique, an organic haven, made of curves, breathes with life, clad in hempcrete, cork, epoxy resin, and glass.

These materials were chosen to reflect sustainability. Stella's vegetarian, fashion-forward, and environmentally conscious ethos defines my choices. Hemp and cork, reflect her commitment to animal-free alternatives. Epoxy resin, a fusion of artistic expression and eco-consciousness, mirrors her innovative spirit. While glass, transparent and transformative, symbolises her vision for a greener world.

This project, a choreography of straight lines and organic curves, honours Stella's legacy. As a designer, I embrace her principles, weaving them into every stitch of my narrative. Amidst global environmental challenges, my design stands as a beacon of hope, by embodying conscious design principals such as sustainable materials like cork, hemp and resine. These conscious design choices serve as an example for future designers, normalizing eco-conscious choices and contributing to a greener, more sustainable future.



CLIENT PROFILE



Name: Stella McCartney
 Lifestyle: Vegetarian
 Profession: Fashion Designer
 Ideologies: Animal right activist, environmentalist.
 Creations: Active wear -(Addidas) Womens wear, unisex's wear, Kids wear, Jackets, shoes, bags and Accessories, beauty and perfumes,
 Principles: Natural resources and Sustainable solutions. Uses vegetarian and animal-free alternatives in her work.
 Style: Luxurious , high end, Elegant and refined.
 Family: Married and mother of four.

CONCEPT



Residence mood board.
 Clean lines and neutral colours Refined modern style, minimalist decor and serene ambiance.



Boutique mood board.
 Organic shapes, earth-toned colours and graceful columns.

The original concept showcases a mansion with a central staircase leading towards the front store, above the store the house rests overlooking the hill. However after learning about the site, it was found that it was much smaller than expected, therefore the concept was adjusted accordingly.



SITE PLAN LOCATION



CONCEPT PLAN AND ELEVATION



SPRING EQUINOX



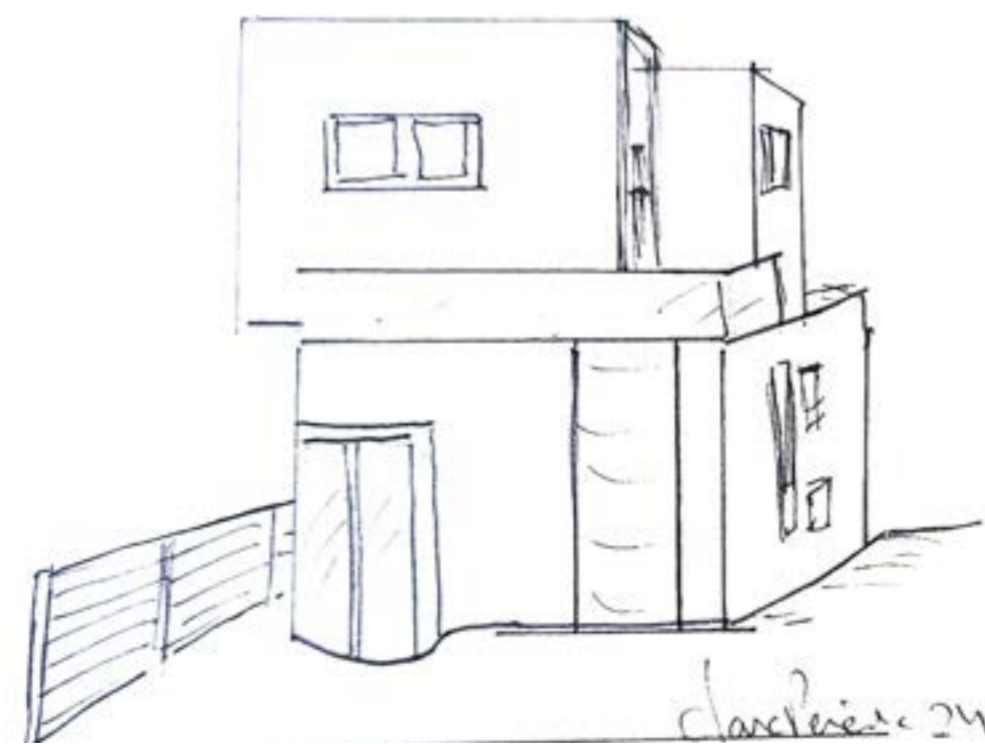
SUMMER SOLSTICE



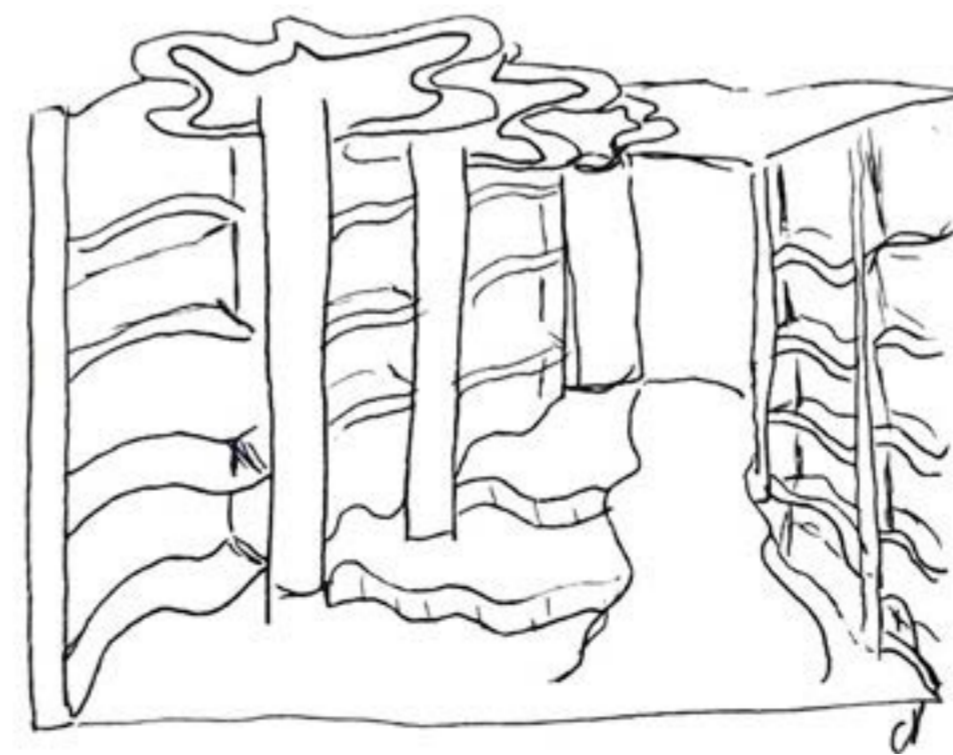
AUTUMN EQUINOX



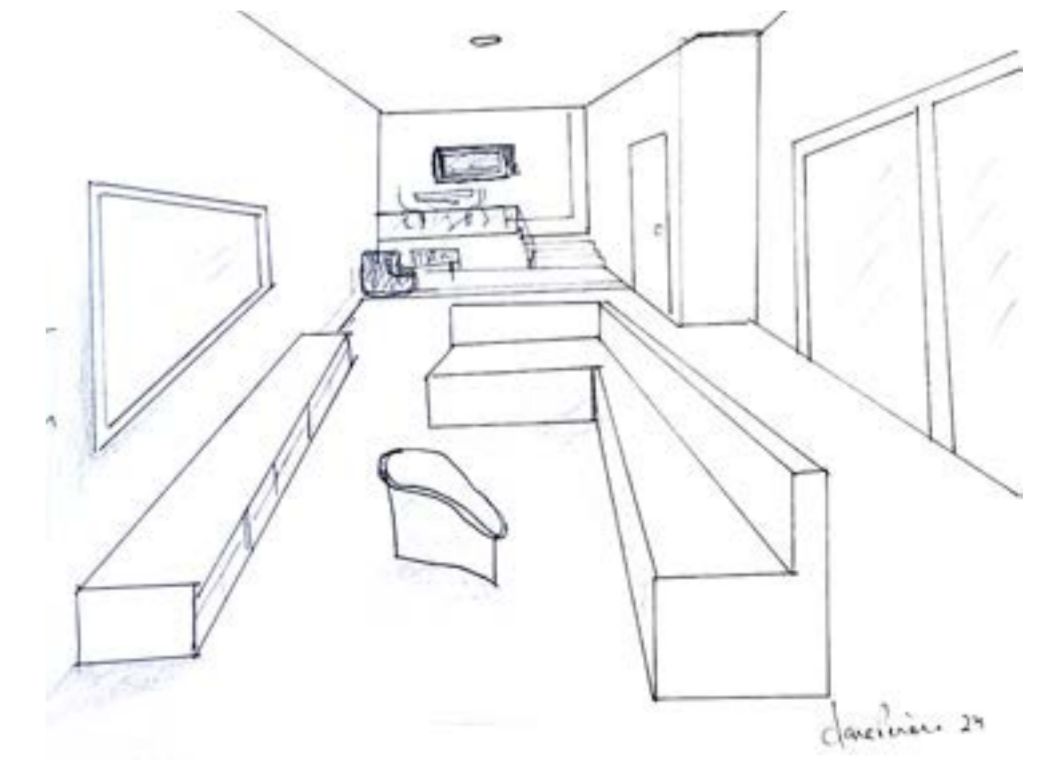
LAYERS
 NATURE
 LIGHT
 are the three words that describe this concept model.



The structure comprises two distinct sections: The commercial area features a circular glass entrance while the interior showcases organic elements. The contemporary home will present clean lines, abundant glass, and spans three stories, one towards the rear and two above, with the topmost level extending over the store's roof.

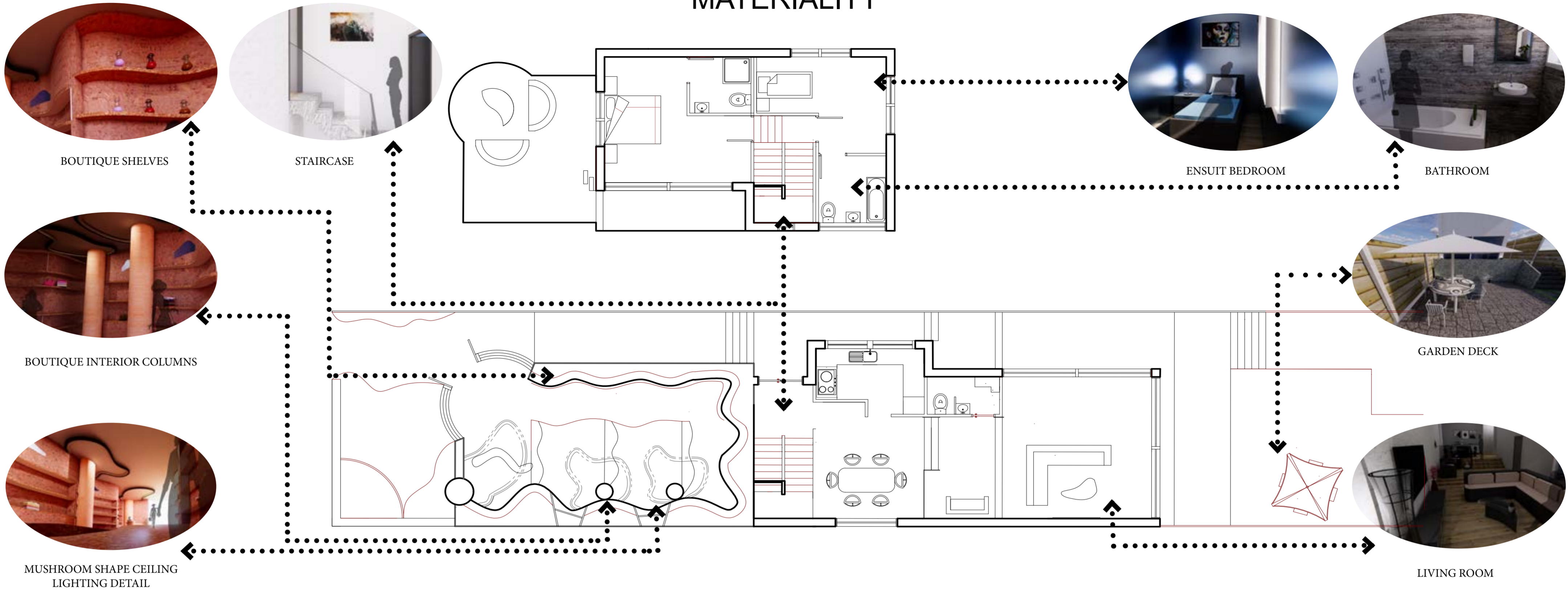


The earth tone store features interior columns that resemble mushrooms, creating a distinctive look. The store is divided into different product areas, with a three stepped different heights and a ramp for wheelchair accessibility.



The residence, will feature clean straight lines, embodying a high-end minimalist style.

MATERIALITY



BOUTIQUE SPACE HEMP, CORK, EPOXY RESINE AND GLASS

The materials chosen are committed to sustainability and preservation of the environment.

The main material for the boutique space's structure will be hemp, a supercrop that respects carbon and is at the forefront of my design because of its low environmental impact and biodegradability.

The boutique will be using cork for the shelving, which is obtained from the renewable bark of cork oak trees and has a special blend of durability and environmental friendliness.

To complement these, the flooring of the room will be finished with epoxy resin that comes from natural sources, which is non-toxic and durable and embodies the commitment to green living.

Glass will be used for the entrance door and this will blend with the glass wall above for the terrace of the residence.



First floor plan



RESIDENTIAL SPACE STONE, GLASS, CONCRETE AND BAMBOO

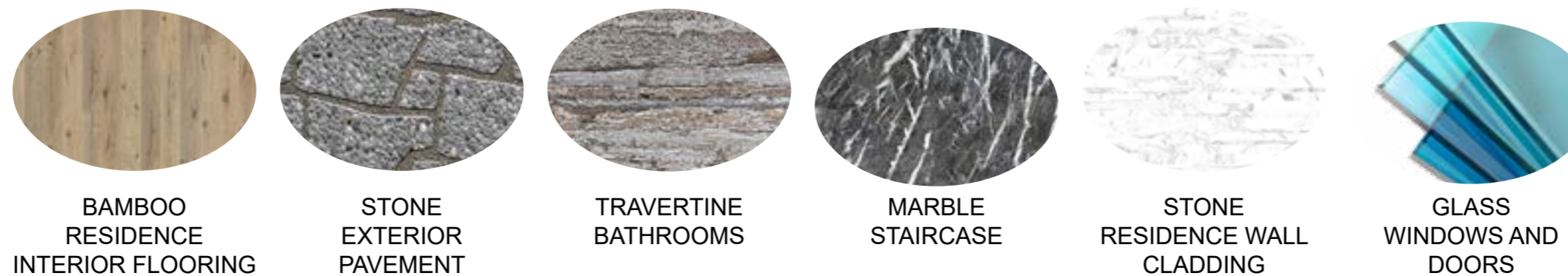
I have opted for stone and glass for the residential section due to its classic beauty and potential to be recycled. The finishing touch is bamboo flooring, which is renowned for its robustness and quick renewal, making our living areas both fashionable and environmentally friendly.

The flooring of the staircase is made of marble, which increases the selection of environmentally friendly materials. Marble, valued for its resilience and natural elegance, requires little processing and can be recycled, making it an environmentally friendly material option. Because of its longevity, it will be a beautiful feature of the staircase for many years to come, minimizing the need for replacement and its negative effects on the environment.

Together, these materials reflect the identity of my client by creating spaces that are not only aesthetically pleasing but also environmentally responsible.



ground floor plan



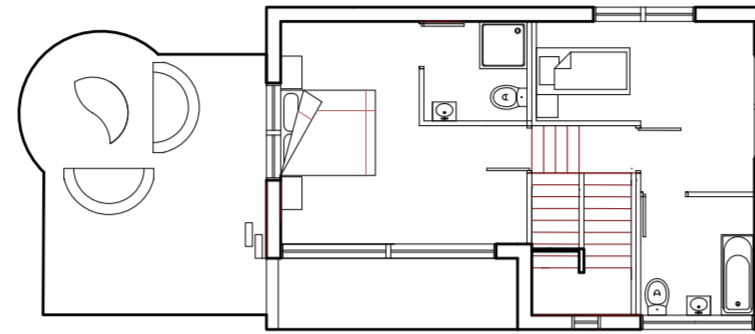
DEVELOPMENT

PROJECT:
31 Hospital Road
Bury St. Edmunds, IP33 3JU

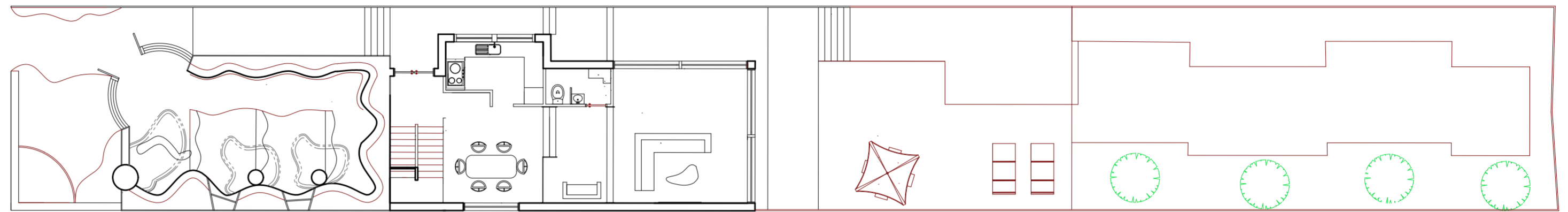
CLIENT:
Stella McCartney



CONTEXT PLAN

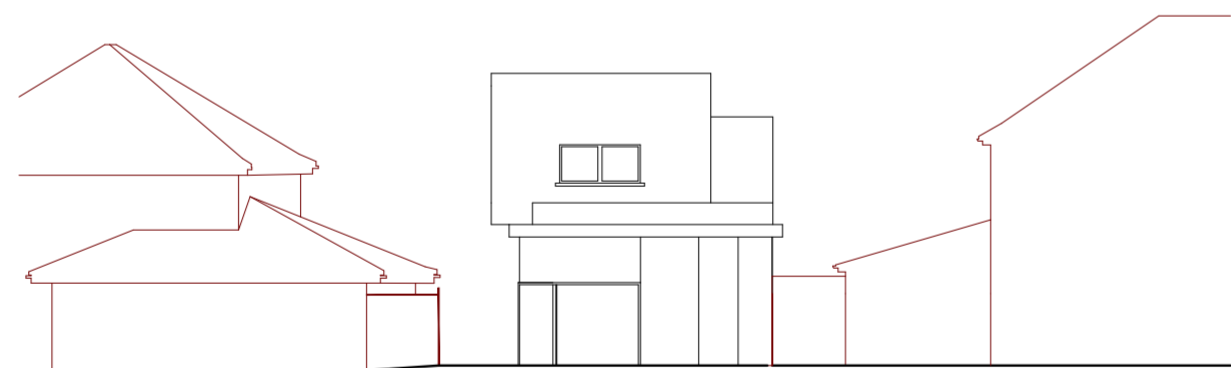


FIRST FLOOR



GROUND FLOOR

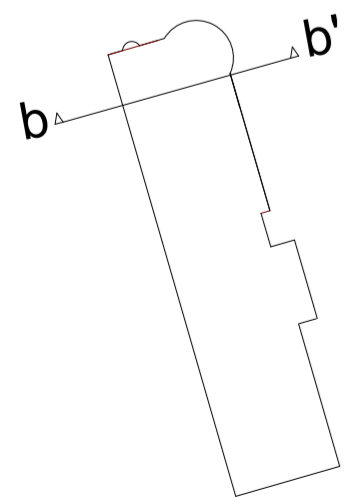
SITE LAYOUT PLAN



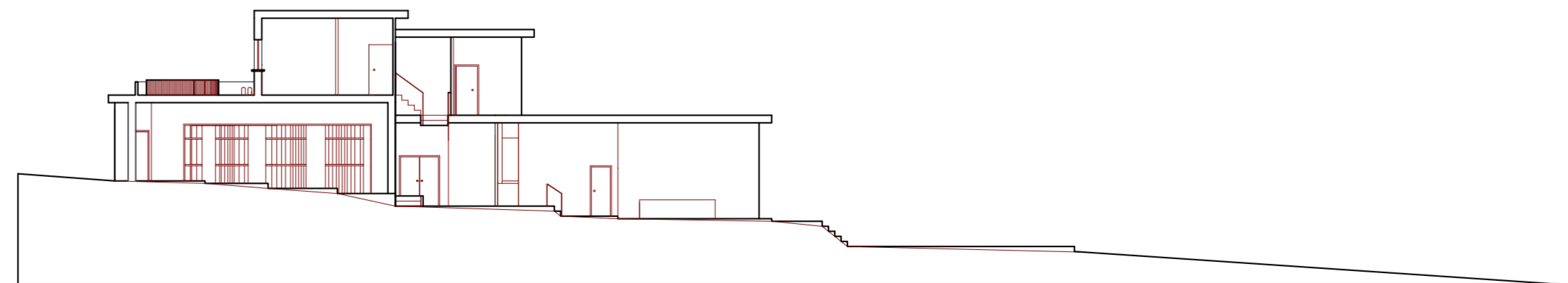
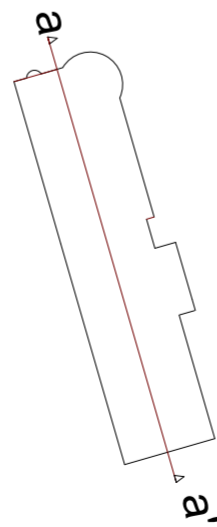
NORTH ELEVATION



WEST ELEVATION



SECTION bb'



SECTION aa'

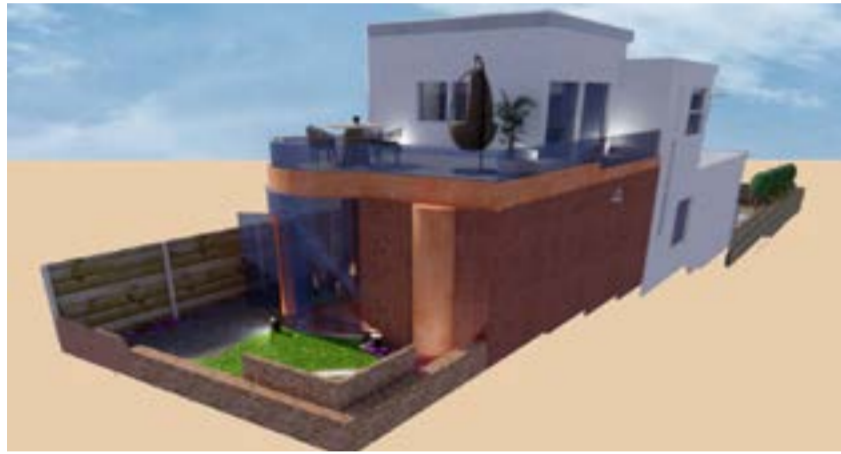
VIEWS AND SECTIONS



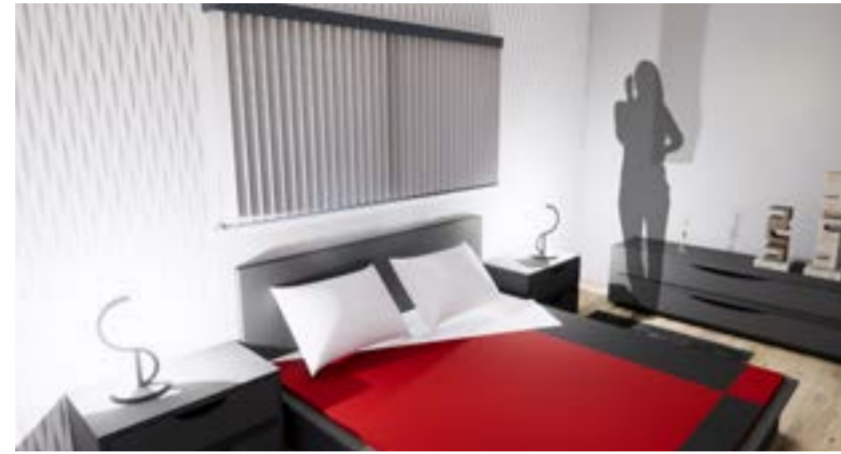
ENTRANCE



DINING ROOM



ISOMETRIC



MASTER BEDROOM WITH ENSUIT



NORTH SECTION



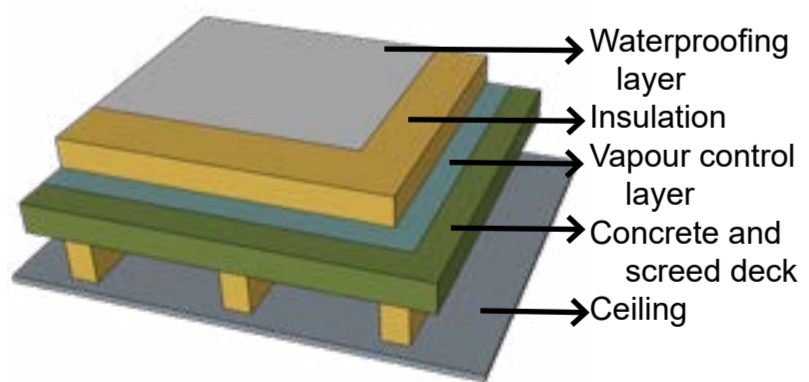
TERRACE



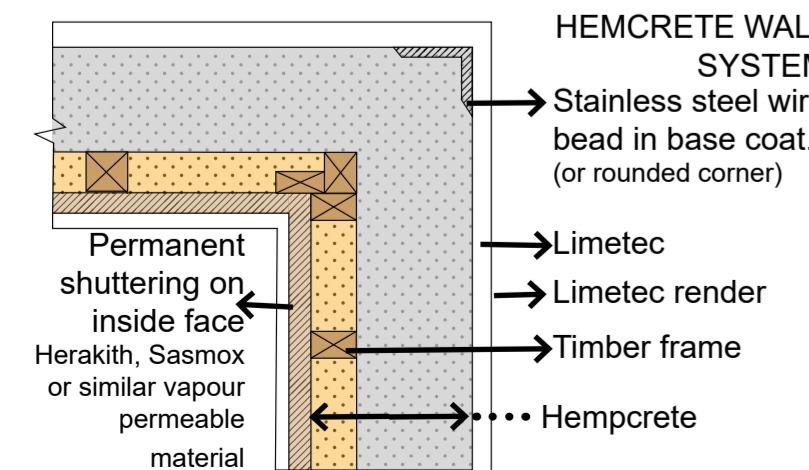
EAST SECTION

DETAILS

FLAT ROOF



- Waterproofing layer
- Insulation
- Vapour control layer
- Concrete and screed deck
- Ceiling



HEMCRETE WALL SYSTEM

- Stainless steel wire bead in base coat. (or rounded corner)
 - Limetec
 - Limetec render
 - Timber frame
 - Hempcrete
- Permanent shuttering on inside face
Herakith, Sasmox or similar vapour permeable material

MODEL



NORTH VIEW



SOUTH VIEW



INTERIOR BOUTIQUE CORK SHELVES